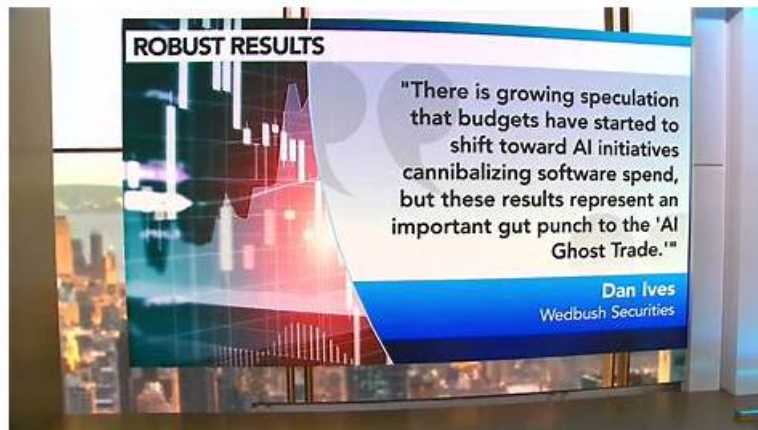


Salesforce-MuleSoft-Developer-I Actual Exam | Salesforce-MuleSoft-Developer-I Exam Overviews



What's more, part of that ExamDumpsVCE Salesforce-MuleSoft-Developer-I dumps now are free: <https://drive.google.com/open?id=1X24YmX9W05h1agEGJPy-HgqML-o3H2iN>

Are you IT person? Do you want to succeed? If you want to succeed, please do to buy Pass4Tes's Salesforce Salesforce-MuleSoft-Developer-I exam training materials. Our training materials have through the test of practice. it can help you to pass the IT exam. With the ExamDumpsVCE's Salesforce Salesforce-MuleSoft-Developer-I exam training materials, you will have better development in the IT industry. You can enjoy the treatment of high-level white-collar, and you can carve out a new territory in the internation. Are you still worried about your exam? ExamDumpsVCE's Salesforce Salesforce-MuleSoft-Developer-I Exam Training materials will satisfy your desire. We are through thick and thin with you and to accept this challenge together.

Salesforce Salesforce-MuleSoft-Developer-I Exam Syllabus Topics:

Topic	Details
Topic 1	<ul style="list-style-type: none"> Processing Records: Processing records includes methods for processing individual records in a collection and explaining how Mule events are processed by the For Each scope. It also involves using the Batch Job with Batch Steps and a Batch Aggregator.
Topic 2	<ul style="list-style-type: none"> Debugging and Troubleshooting Mule Applications: Using breakpoints to inspect a Mule event during runtime, installing missing Maven dependencies, and reading and deciphering Mule log error messages are sub-topics of this topic.
Topic 3	<ul style="list-style-type: none"> Deploying and Managing APIs and Integrations: It includes packaging Mule applications for deployment and deploying them to CloudHub. This topic also involves using CloudHub properties, creating and deploying API proxies, connecting an API implementation to API Manager, and applying policies to secure an API.
Topic 4	<ul style="list-style-type: none"> Designing APIs: Designing APIs involves describing the lifecycle of the modern API and using RAML to define various aspects of an API. It includes identifying when to use query parameters vs URI parameters, and defining API parameters.
Topic 5	<ul style="list-style-type: none"> Routing Events: It focuses on using the Choice router for conditional logic and the Scatter-Gather router to multicast events. This topic also involves validating data by using the Validation module.
Topic 6	<ul style="list-style-type: none"> Structuring Mule Applications: Structuring Mule applications covers parameterizing an application and defining and reusing global configurations. It includes breaking an application into multiple flows using private flows, subflows, and the Flow Reference component.

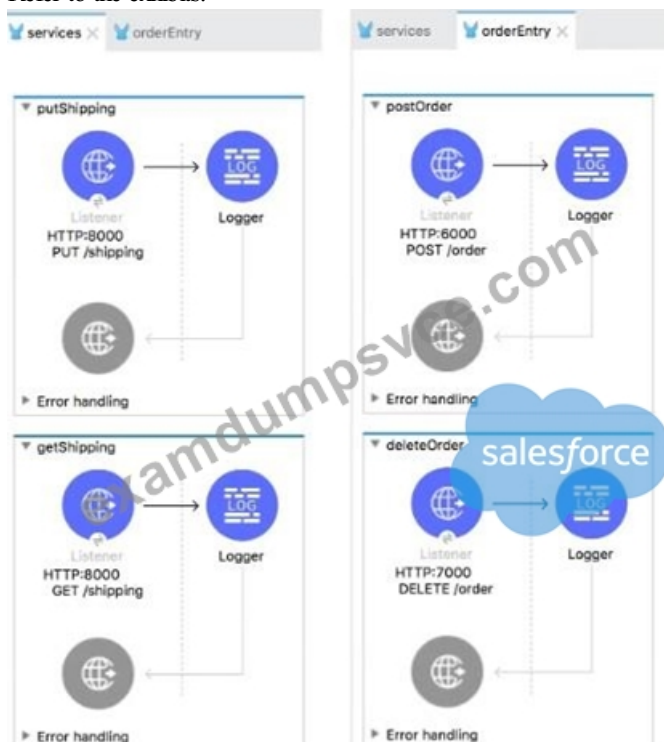
Salesforce-MuleSoft-Developer-I Exam Overviews & New Soft Salesforce-MuleSoft-Developer-I Simulations

Free demos offered by ExamDumpsVCE gives users a chance to try the product before buying. Users can get an idea of the Salesforce-MuleSoft-Developer-I exam dumps, helping them determine if it's a good fit for their needs. The demo provides access to a limited portion of the Salesforce-MuleSoft-Developer-I dumps material to give users a better understanding of the content. Overall, ExamDumpsVCE Salesforce Certified MuleSoft Developer (Mule-Dev-201) (Salesforce-MuleSoft-Developer-I) free demo is a valuable opportunity for users to assess the value of the ExamDumpsVCE's study material before making a purchase. The ExamDumpsVCE provides 1 year of free updates of real questions. This offer allows students to stay up-to-date with changes in the exam's content.

Salesforce Certified MuleSoft Developer (Mule-Dev-201) Sample Questions (Q15-Q20):

NEW QUESTION # 15

Refer to the exhibits.



The two Mule configuration files belong to the same Mule project. Each HTTP Listener is configured with the same host string and the port number, path, and operation values are shown in the display names.

What is the minimum number of global elements that must be defined to support all these HTTP Listeners?

- A. 0
- **B. 1**
- C. 2
- D. 3

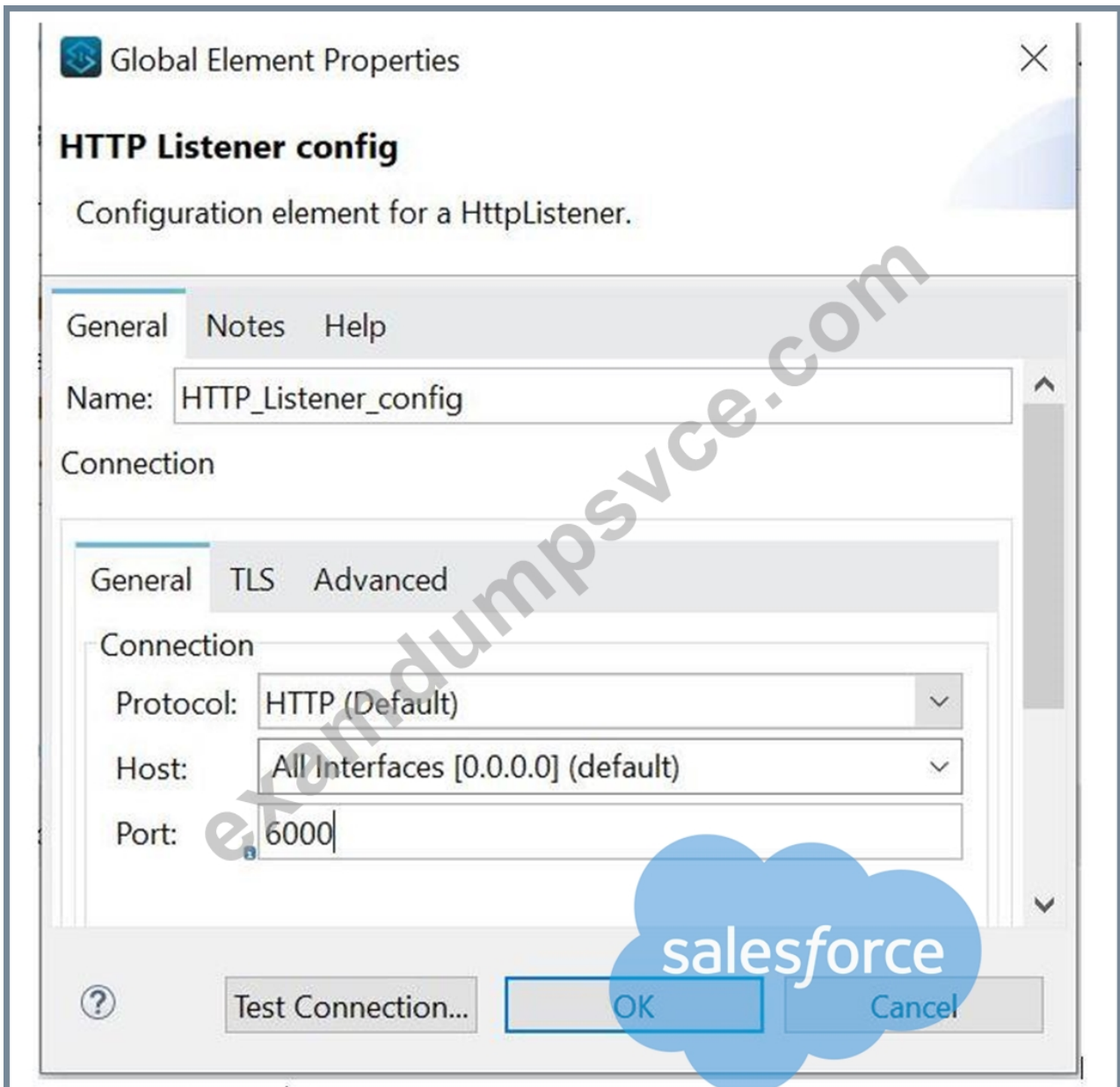
Answer: B

Explanation:

In this case three configurations will be required each for port 8000, 6000 and 7000.

There would be three global elements defined for HTTP connections.

Each HTTP connection will have host and port. One example shown below with host as localhost and port 6000



To use an HTTP listener, you need to declare a configuration with a corresponding connection. This declaration establishes the HTTP server that will listen to requests.

Additionally, you can configure a base path that applies to all listeners using the configuration.

```
<http:listener-config name="HTTP_Listener_config" basePath="/api/v1" />
```

```
<http:listener-connection host="0.0.0.0" port="8081" />
```

```
</http:listener-config>
```

<https://docs.mulesoft.com/http-connector/1.6/http-listener-ref#http-listener-configuration>

NEW QUESTION # 16

Which of the below functionality is provided by zip operator in DataWeave?

- A. Used for sending attachments
- B. All of the above
- C. Merges elements of two lists (arrays) into a single list
- D. Minimize the size of long text using encoding.

Answer: C

Explanation:

Correct answer is Merges elements of two lists (arrays) into a single list MuleSoft Doc Reference : <https://docs.mulesoft.com/mule-runtime/4.3/dw-core-functions-zip>

NEW QUESTION # 17

How are multiple conditions used in a Choice router to route events?

- A. To route the same event to the matched route of EVERY true condition
- B. To find the FIRST true condition, then route the same event to the matched route and ALL FOLLOWING routes
- C. None of these
- D. To find the FIRST true condition, then distribute the event to the ONE matched route.

Answer: D

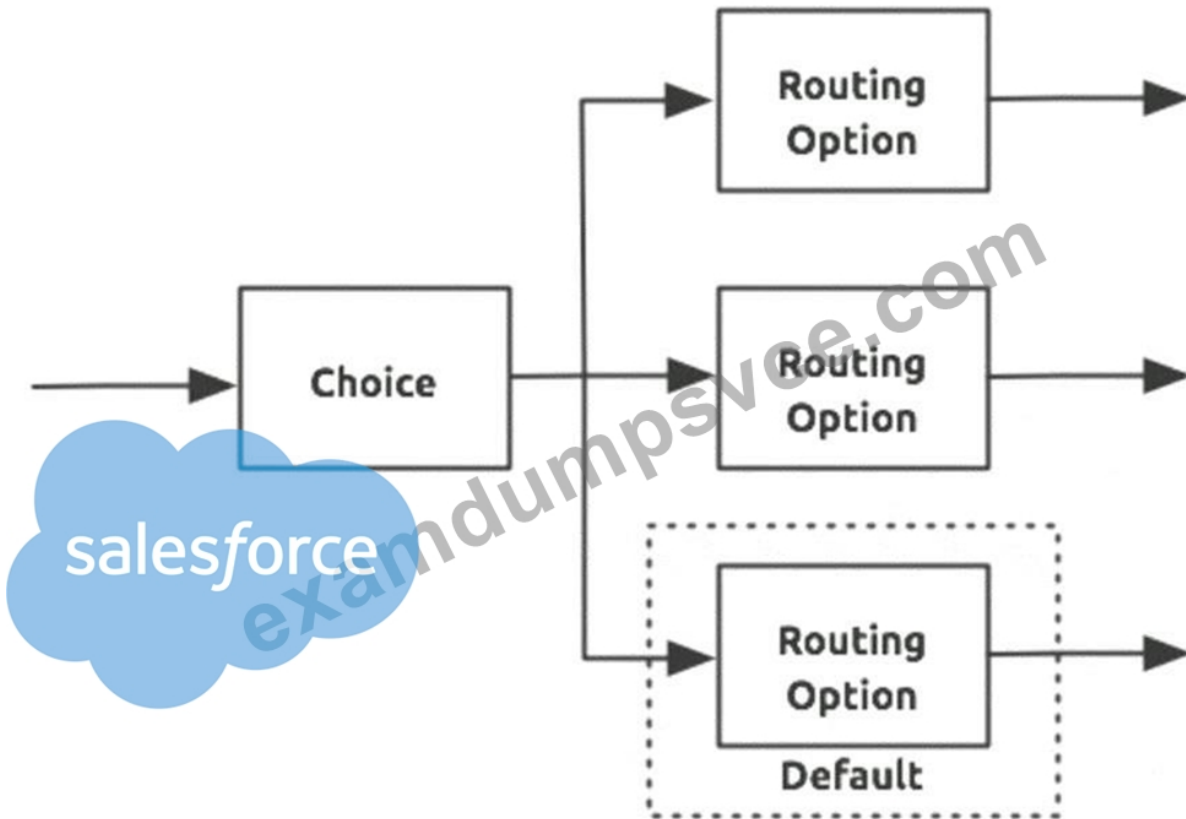
Explanation:

Choice router finds the FIRST true condition, then distribute the event to the ONE matched route.

MuleSoft Doc Ref: <https://docs.mulesoft.com/mule-runtime/4.1/choice-router-concept> The Choice router dynamically routes messages through a flow according to a set of DataWeave expressions that evaluate message content. Each expression is associated with a different routing option. The effect is to add conditional processing to a flow, similar to an if/then/else code block in most programming languages.

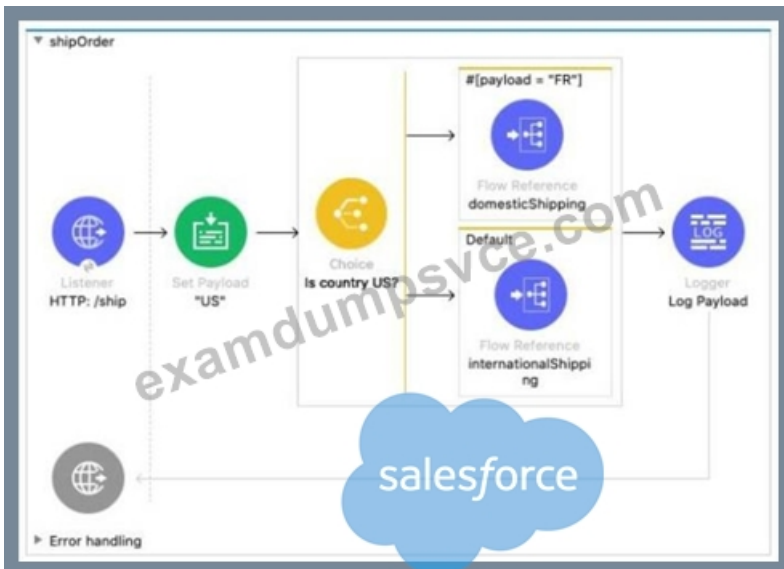
Only one of the routes in the Choice router executes, meaning that the first expression that evaluates to true triggers that route's execution and the others are not checked. If none of the expressions are true, then the default route executes.

Diagram Description automatically generated



NEW QUESTION # 18

Refer to the exhibits.



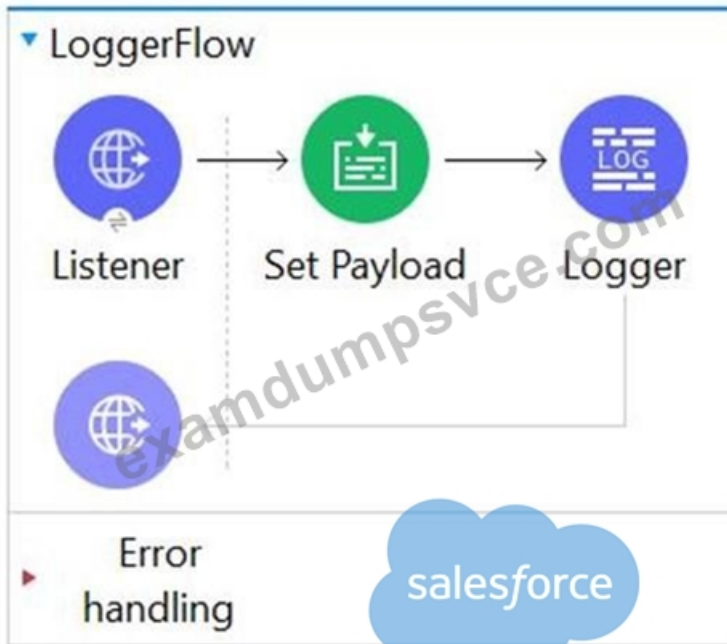
In the Choice router, the When expression for the domesticShipping route is set to "#[payload = 'FR']". What is logged after the Choice router completes?

- A. A DataVeave syntax error
- B. The result of the internationalShipping flow
- C. A string with value "FR"
- D. The result of the domesticShipoing flow

Answer: A

NEW QUESTION # 19

Refer to the payload.



```
<flow name="LoggerFlow" doc:id="d5015e61-b3b5-4833-8c5e-ed176a3f6cb0" >
  <http:listener doc:name="Listener" doc:id="5ae3d668-7075-4236-a08b03186b53" config-ref="HTTP_Listener_config" path="/Log" />
  <set-payload value="#{
    &#10;
    "student": {
    &#10;
      "name": "Anay",
    &#10;
      "age": 6
    &#10;
    }
    &#10;
  }" doc:name="Set Payload" doc:id="7763301e-1fed-48fc-968d-47c1b113c867" />
  <logger level="INFO" doc:name="Logger" doc:id="8e169165-force-d-44fb-b0db-cd5b3d382c6d" message='Result #[ "INFO"++ payload]' />
</flow>
```

The Set payload transformer sets the payload to an object. The logger component's message attribute is configured with the string "Result #["INFO"++ payload]" What is the output of logger when this flow executes?

- A. Result INFO {"student": {"name": "Anay", "age": 6}}
- B. Result INFO payload
- C. 1. 1. "You called the function '++' with these arguments: 2. 1: String ("INFO") 3. 3: Object ({student: {name: "Anay" as String {class: "java.lang.String"}, age: 6 as Numbe...)
- D. Error : You evaluated inline expression # without ++

Answer: C

Explanation:

Correct answer is as below as concatenation operation works only with string and not with the objects. In this case payload is object.

"You called the function '++' with these arguments:

1: String ("INFO")

2: Object ({student: {name: "Anay" as String {class: "java.lang.String"}, age

NEW QUESTION # 20

.....

As the captioned description said, our Salesforce-MuleSoft-Developer-I practice materials are filled with the newest points of knowledge about the exam. With many years of experience in this line, we not only compile real test content into our Salesforce-MuleSoft-Developer-I practice materials, but the newest in to them. Allowing for there is a steady and growing demand for our Salesforce-MuleSoft-Developer-I practice materials with high quality at moderate prices, we never stop the pace of doing better. All newly supplementary updates will be sent to your mailbox one year long. And we shall appreciate it if you choose any version of our Salesforce-MuleSoft-Developer-I practice materials for exam and related tests in the future.

Salesforce-MuleSoft-Developer-I Exam Overviews: <https://www.examdumpsvce.com/Salesforce-MuleSoft-Developer-I-valid-exam-dumps.html>

- Salesforce-MuleSoft-Developer-I Latest Exam Review Salesforce-MuleSoft-Developer-I Latest Exam Review

