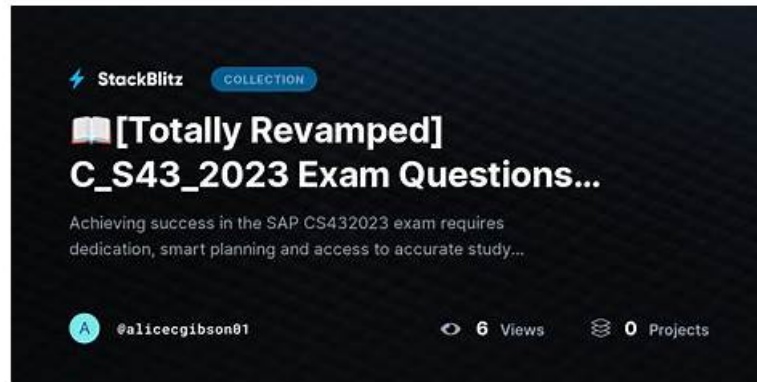


Real SAP C_S43 PDF Questions [2026]-Get Success With Best Results



In order to save you a lot of installation troubles, we have carried out the online engine of the C_S43 latest exam guide which does not need to download and install. This kind of learning method is convenient and suitable for quick pace of life. But you must have a browser on your device. Our online workers are going through professional training. Your demands and thought can be clearly understood by them. Even if you have bought our high-pass-rate C_S43 training practice but you do not know how to install it, we can offer remote guidance to assist you finish installation. In the process of using, you still have access to our after sales service. All in all, we will keep helping you until you have passed the C_S43 exam and got the certificate.

By doing this you can stay updated and competitive in the market and achieve your career objectives in a short time period. To do this you just need to pass the one SAP Certified Implementation Consultant - SAP S/4HANA Cloud Private Edition, Asset Management (C_S43_2601) (C_S43) exam. Are you ready for this? If yes then enroll in SAP Certified Implementation Consultant - SAP S/4HANA Cloud Private Edition, Asset Management (C_S43_2601) (C_S43) exam dumps and start this journey with PracticeDump. The PracticeDump offers real, valid, and updated C_S43 Questions that surely will help you in exam preparation and enable you to pass the challenging SAP Certified Implementation Consultant - SAP S/4HANA Cloud Private Edition, Asset Management (C_S43_2601) (C_S43) exam with flying colors.

>> C_S43 Passed <<

100% Pass 2026 SAP C_S43 Authoritative Passed

Choosing our C_S43 real dumps as your study guide means you choose a smart and fast way to get succeed in the certification exam. There are accurate C_S43 test answers and some explanations along with the exam questions that will boost your confidence to solve the difficulty of C_S43 Practice Test. You will enjoy great benefits if you buy our C_S43 braindumps now and free update your study materials one-year.

SAP Certified Implementation Consultant - SAP S/4HANA Cloud Private Edition, Asset Management (C_S43_2601) Sample Questions (Q10-Q15):

NEW QUESTION # 10

Create and use a Maintenance Work Center

The project team evaluates during the implementation project the organizational elements in SAP S/4HANA Asset Management.

The following features need to be checked:

- * Create a Maintenance Work Center
- * Create a capacity demand for a Maintenance Work Center
- * Create a new Maintenance Work Center master record ZZ-ME## for maintenance plant 1010 similar to maintenance work center T-ME00 and save it. Use the following information:

Field	Value
Plant	1010
Work Center	ZZ-ME##
Description	Mechanical Maintenance ##
No. Ind. Capacities	5
Capacity	24,00 H

* Create a capacity demand of 1 hour for the just created Maintenance Work Center ZZ-ME## by creating a new maintenance order of order type PM01 .

Answer:

Explanation:

See the Explanation for complete Solution of this Task.

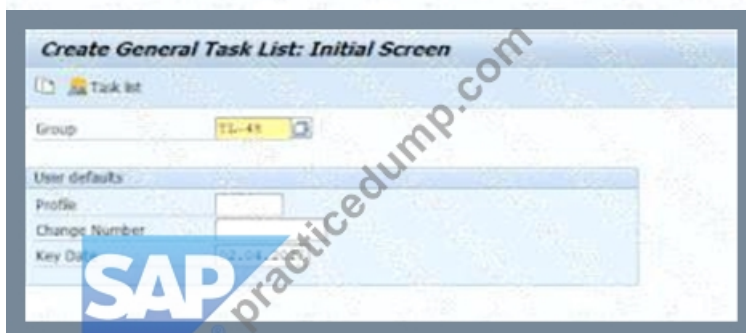
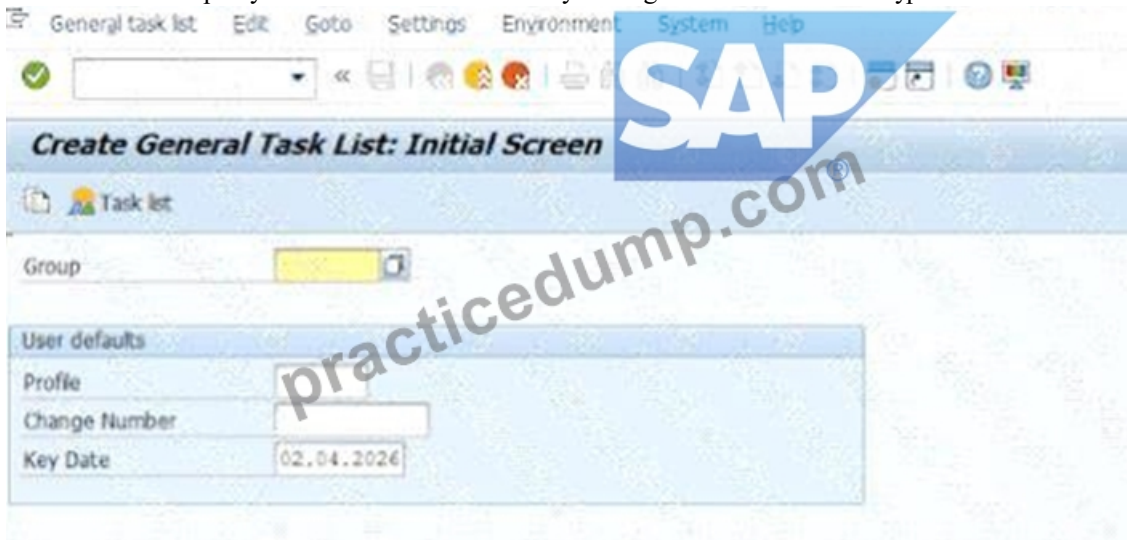
Explanation:

Task 3: Create and Use a Maintenance Work Center

Objective

In Task 3, the requirement was to:

- * create a new maintenance work center ZZ-ME42 for plant 1010 similar to T-ME00
- * maintain the required capacity values
- * create a 1-hour capacity demand for that work center by creating a maintenance order of type PM01





Part 1: Create the Maintenance Work Center

Requirement from task file

The task required the following values for the work center:

* Plant = 1010

* Work Center = ZZ-ME42

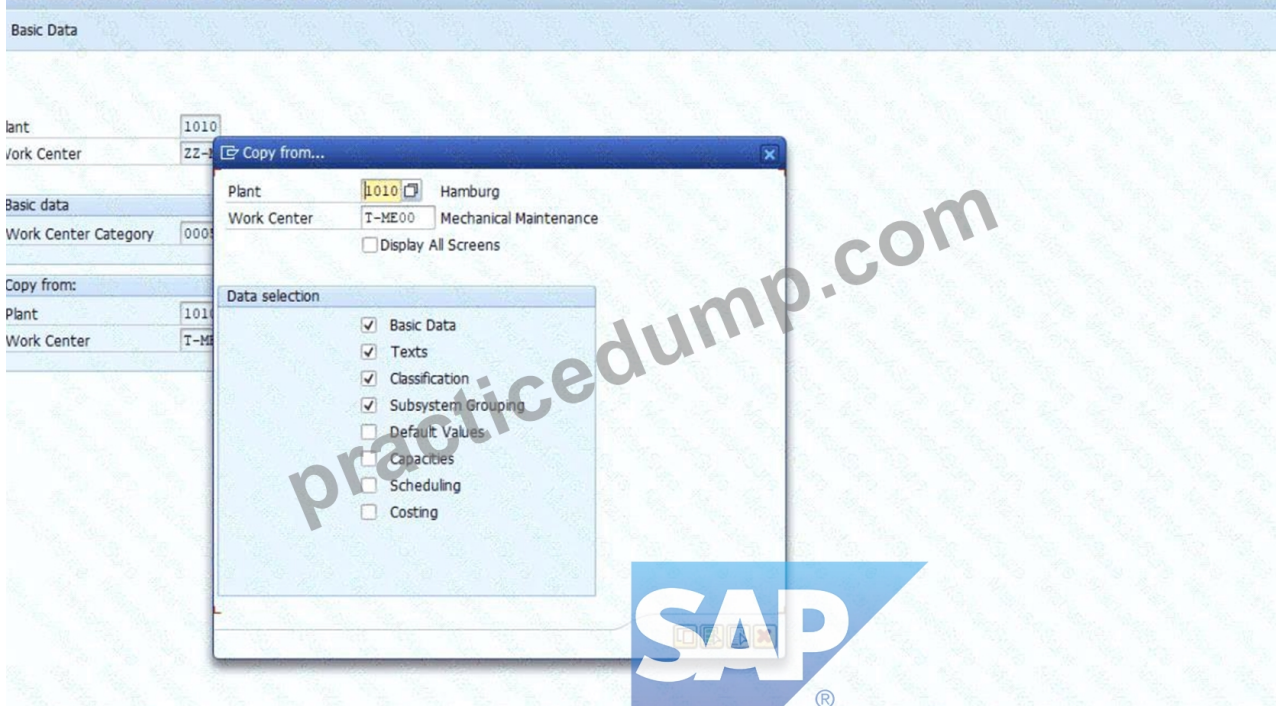
* Description = Mechanical Maintenance 42

* No. Ind. Capacities = 5

* Capacity = 24.00 H

The task also stated that the work center must be created similar to maintenance work center T-ME00 .

Create Work Center: Initial Screen



Step-by-step procedure

Step 1: Open work center creation

* Go to SAP GUI command field

* Enter transaction IR01

* Press Enter

Transaction IR01 is used to create a new work center. This is the correct starting point for creating the maintenance work center required in Task 3.

Step 2: Enter initial work center data

On the Create Work Center: Initial Screen , enter:

* Plant = 1010

* Work Center = ZZ-ME42

- * Work Center Category = 0005
- * In Copy from :
- * Plant = 1010
- * Work Center = T-ME00

Then press Enter .

The task explicitly required the work center to be created for plant 1010 and to be created similar to T-ME00.

Work center category 0005 is the maintenance work center category, so this was the correct category to use for a maintenance work center.

Step 3: Include capacity data during copy

When the Copy from popup appeared:

- * select Capacities
- * continue with the green check

This was important because the task required changing capacity-related data:

- * No. Ind. Capacities = 5
- * Capacity = 24.00 H Copying the capacity data ensured the new work center inherited the capacity structure from T-ME00 and could then be adjusted correctly.

Create Work Center: Capacity Overview

Plant: 1010 Hamburg

Work Center: ZZ-ME42 Mechanical Maintenance 42

Basic Data Default Values **Capacities** Scheduling Costing Groups

Overview

Capacity category: 002 Labor

Pooled capacity: Capacity Mechanical Control Capacity Reduction

Setup Formula: 0 Formula-Related

Processing Formula: 0 Formula-Related

Teardown Formula: 0 Formula-Related

Other Formula: SAP008 Proj:RqmtsNetwkMai

Distribution:

Int. dist. key:

Capacity Form. Form... Formula constnts ActCapReqmnts

Step 4: Maintain basic data

On the work center master screen:

- * change the description to Mechanical Maintenance 42

This matches the exact description required by the task.

Step 5: Maintain capacity values

Go to the Capacities tab, then open the capacity detail screen.

Maintain or verify:

* No. Ind. Capacities = 5

* Capacity Base Unit = H

* Capacity recalculated to 24.00 H

In our system, the Capacity field was system-calculated and not directly editable.

The final valid values were achieved with:

* Start Time = 08:00:00

* End Time = 17:00:00

* Length of breaks = 01:00:00

* Capacity Utilization = 60

* No. Ind. Capacities = 5

This produced:

* Capacity = 24.00 H

The task required 24.00 H capacity, but SAP calculated it automatically based on operating time, utilization, and number of individual capacities.

The resulting calculation was correct and matched the task requirement exactly.

Step 6: Save the work center

* Click Save

Later, when trying to create the same work center again, SAP displayed the system message:

* "Work center ZZ-ME42 in plant 1010 already exists"

Explanation / Verification:

This system message confirmed that the work center had already been created successfully.

Therefore, the creation of ZZ-ME42 was verified as complete.

Part 2: Create a 1-Hour Capacity Demand

Requirement from task file

The task required:

* create a capacity demand of 1 hour

* for the newly created maintenance work center ZZ-ME42

* by creating a maintenance order of type PM01

Step-by-step procedure

Step 7: Open maintenance order creation

* In the command field, enter /nIW31

* Press Enter

Transaction IW31 is used to create a maintenance order.

The /n ensured SAP exited the previous transaction and opened the new one directly.

Step 8: Enter order header data

On the Create Maintenance Order: Initial Screen, enter:

* Order Type = PM01

* Planning Plant = 1010

Then press Enter.

The task explicitly required the capacity demand to be created by means of a maintenance order of type PM01.

Step 9: Enter order description

On the order header screen, enter a short text such as:

* Capacity demand ZZ-ME42

The task did not prescribe a specific short text, so a meaningful description was used for traceability.

Step 10: Create the first operation

In the first operation area / operations overview, maintain:

* Operation = 0010

* Work Center = ZZ-ME42

* Plant = 1010

* Control Key = PM01

* Work Duration / Work = 1

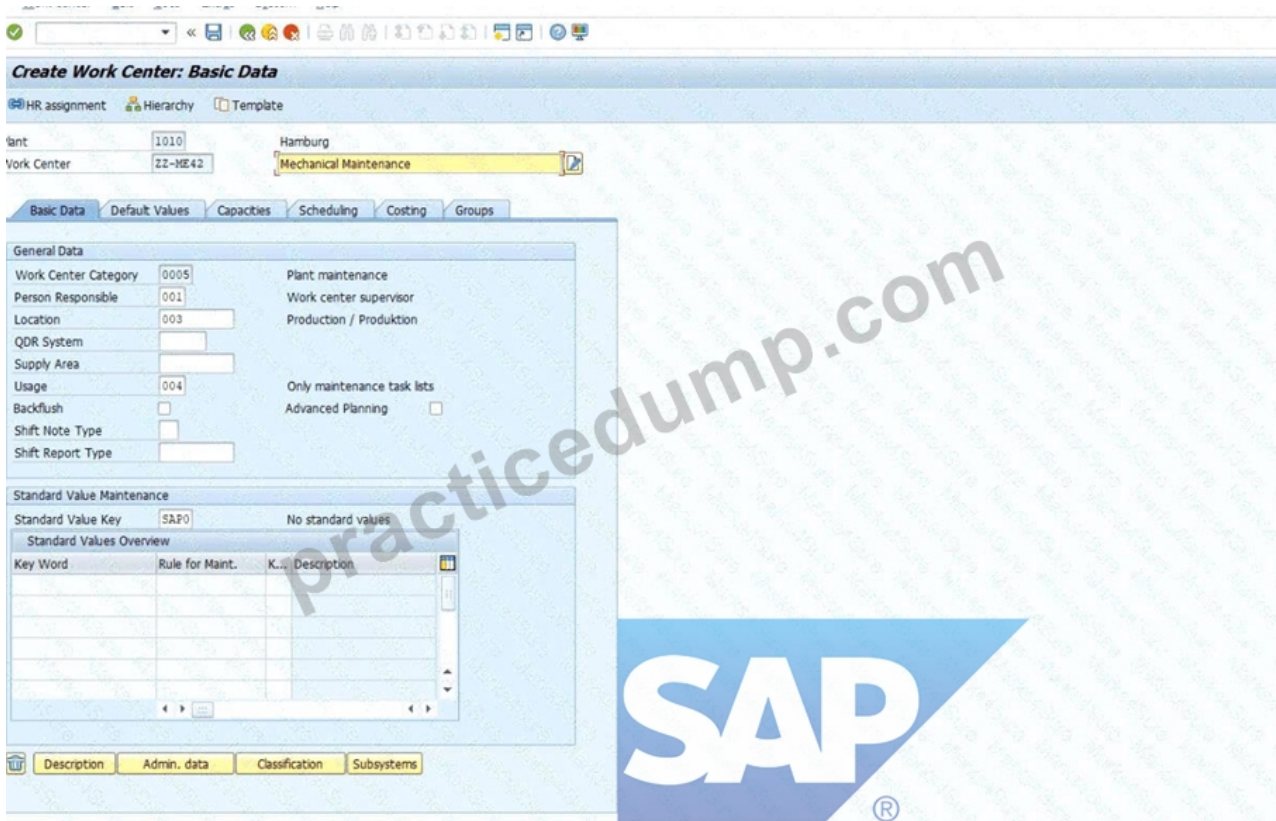
* Unit = H

Then press Enter.

This operation is the actual source of the capacity demand.

The capacity demand is not created merely by the order header; it is created by assigning the operation to the work center with a planned work value of 1 hour.

Therefore, these operation entries were the critical part of fulfilling Task 3.



Step 11: Save the maintenance order

- * Click Save

SAP displayed the confirmation message:

- * "Order saved with number 4000314"

Explanation / Verification:

This was the final confirmation that the maintenance order had been created successfully.

Because the operation was assigned to ZZ-ME42 with 1 H planned work, this verified that the required 1- hour capacity demand had been created for the work center.

Verified completed objects

The following results were verified during execution:

- * Maintenance Work Center created
- * Work Center = ZZ-ME42
- * Plant = 1010
- * confirmed by SAP message that the work center already existed when rechecked
- * Capacity maintained correctly
- * No. Ind. Capacities = 5
- * Capacity = 24.00 H
- * Capacity demand created
- * maintenance order type PM01
- * operation assigned to ZZ-ME42
- * planned work = 1 H
- * Order successfully saved
- * SAP confirmation: Order saved with number 4000314

NEW QUESTION # 11

Check Inspection Lot and record Inspection Results

The project team evaluates during the implementation project the checking of Inspection Lots Checklist processing including result recording. The following features need to be checked:

- * Display the automatically created Inspection Lot
- * Record Inspection Results
- * Display the automatically created Inspection Lot for the previously created Maintenance Order including Checklist. The Inspection Lot comprises the following data:

Field	Value
Material	T-PM1100
Plant	1010
Inspection Lot Origin	89 Miscellaneous
Group	CL-DE-00
Group Counter	1

* Record Inspection Results for the previously created Inspection Lot so that the Usage Decision is automatically set to Can be used

Answer:

Explanation:

See the Explanation for complete Solution of this Task.

Explanation:

Task 13 Overview

This task focuses on the quality management (QM) integration with maintenance. You will verify the inspection lot that was automatically triggered by your maintenance order and then record the results to confirm the technical object is fit for use.

Step 1: Display the Automatically Created Inspection Lot

Before recording results, you must verify that the system generated the correct inspection lot for your maintenance order.

* Access the Transaction : Enter QA03 (Display Inspection Lot) in the command field and press Enter .

* Locate the Lot : Search for the inspection lot associated with the maintenance order you created in Task 12.

* Verify the Following Data :

* Material : T-PM1100

* Plant : 1010

* Inspection Lot Origin : 89 (Miscellaneous)

* Group : CL-DE-00

* Group Counter : 1

Explanation : The inspection lot is the central record for quality testing. Seeing these specific values (Group CL-DE-00) confirms that the classification you set up in Task 11 correctly triggered the intended inspection plan.

Step 2: Record Inspection Results

This is the process of entering the actual findings from the checklist inspection.

* Access the Transaction : You can navigate directly from the Inspection Lot in QA03 or use transaction QE51N (Results Recording Selection).

* Select the Lot : Enter your inspection lot number and click Execute .

* Record Results :

* Enter the inspection values for each characteristic listed in the checklist.

* Ensure the values you enter are within the "Acceptable" range or marked as "Pass".

* Automatic Usage Decision : Record the results such that the Usage Decision (UD) is automatically set to "Can be used" .

* Save : Click the Save (floppy disk) icon.

Explanation : By recording positive results, you satisfy the quality requirements for the maintenance task.

The automatic transition to "Can be used" status tells the system the pump has passed inspection and the maintenance order can proceed toward completion.

NEW QUESTION # 12

Schedule a Maintenance Plan

The project team evaluates during the implementation project the scheduling of Maintenance Plans in SAP S/4HANA Asset Management. The following features need to be checked:

Schedule a Maintenance Plan

Display a generated Maintenance Order

Schedule the previously created Maintenance Plan. The following prerequisites have to be met:

The next upcoming call is the 4 MON Maintenance Package

Calculate the Completion Date of the last Maintenance Package as follows: Today's date minus 4 weeks (e.g.

today's date: 15th of December >>> Completion Date: 17th of November) The Call Date is always 10 days before the Plan Date.

Note:

Check your Maintenance Plan and adapt it, if necessary, before you schedule it.

Check the following information in the generated Maintenance Order:

number of order operations: 2

Maintenance Plan: number of the previously created Maintenance Plan

Last Included Task List: A / TL-## / 1

Answer:

Explanation:

See the Explanation for complete Solution of this Task.

Explanation:

Task 9 Overview

The goal of this task is to trigger the maintenance schedule you built in Task 8 so that the system generates an actual work order.

You must meet specific scheduling conditions to ensure the right maintenance cycle (the 4- month package) is triggered.

Step 1: Adapt Scheduling Parameters (IP02)

Before starting the schedule, you must ensure the "Call Date" rules are correct.

* Transaction : Enter IP02 (Change Maintenance Plan).

* Maintenance Plan : Enter the number you saved in Task 8 and press Enter .

* Scheduling Parameters Tab :

* Call Horizon : Adjust this so that the Call Date occurs exactly 10 days before the Plan Date.

* Note: If your system uses percentages, you will need to calculate the percentage of the 4-month cycle that results in a 10-day lead time.

* Save your changes.

Step 2: Schedule the Plan (IP10)

Now you will "start" the clock for this maintenance schedule.

* Transaction : Enter IP10 (Schedule Maintenance Plan).

* Maintenance Plan : Enter your plan number and press Enter .

* Start Scheduling : Click the Start icon (or go to Maintenance plan > Scheduling > Start).

* Enter the "Start Date" / "Completion Date" :

* The Rule : You must use Today's date minus 4 weeks .

* Example: If today is April 19, enter March 22.

* Press Enter . The system will calculate the next calls.

* Verify the Package : Ensure the next upcoming call is indeed the 4 MON (4-month) Maintenance Package.

* Save (Floppy Disk icon). This will generate a new Maintenance Order number.

Step 3: Verify the Generated Maintenance Order

You must now check that the order was created correctly based on the rules of your Task List (Task 7) and Maintenance Plan (Task 8).

* Display Order : In IP10 , select the line for the generated call and click the Display Order icon (or use transaction IW33 with the new order number).

* Check the following three items :

* Operations : Verify there are exactly 2 operations in the order (the Monthly and 4-Month tasks).

* Maintenance Plan : Confirm the order shows your specific Maintenance Plan number.

* Task List : Verify the "Last Included Task List" is A / TL-48 / 1 .

NEW QUESTION # 13

Create a Task List

The project team evaluates during the implementation project Task Lists in SAP S/4HANA Asset Management. The following features need to be checked:

* Create a Task List header

* Create Task List operations

* Create a Task List with 3 Task List operations. Maintenance Strategy Z### comprises Maintenance Packages with different hierarchy levels.

Use the following information at header level of the Task List:

Field	Value
Group	TL-##
Group Counter	1
Planning Plant	1010
Description	Regular Maintenance GR##
Work Center	MK-00
Work Center Plant	1010
Usage	4
Planner Group	P##
Maintenance Strategy	Z##

Use the following information for each Task List operation:

Field	Value
Work Ctr	MK-00
Plnt	1010
Control Key	PM01
Work	30
Unit	MIN

* Assign Maintenance Packages to the Task List Operations as follows:

- * Operation 10 is to be performed monthly.
- * Operation 20 is to be performed every 4 months.
- * Operation 30 is to be performed every 12 months.

Answer:

Explanation:

See the Explanation for complete Solution of this Task.

Explanation:

Since we encountered that error with the Z48 strategy , we must ensure that is fixed before we can finish the Task List. Here is the complete, verified, step-by-step process to finalize Task 7 , including the "hidden" pre- requisite.

Task 7: Create a General Task List

Objective : To create a standardized template of maintenance steps that can be automatically pulled into future work orders based on a schedule.

Step 1: The Pre-requisite (Fixing Strategy Z48)

If you haven't done this yet, SAP will not let you save the Task List.

- * Transaction : IP11 (Maintain Maintenance Strategies).
- * Action : Click New Entries .
- * Strategy : Z48
- * Description : Strategy for Group 48
- * Strategy Unit : MON (Months).
- * Packages : On the left, double-click Packages , then click New Entries :
- * Line 1 : Cycle 1 / Unit MON / Text Monthly
- * Line 2 : Cycle 4 / Unit MON / Text Every 4 Months
- * Line 3 : Cycle 12 / Unit MON / Text Yearly
- * Save (Floppy Disk icon).

Explanation : A strategy is the "calendar" that defines how often work happens. Without this, the system doesn't know what

"Monthly" or "Yearly" means.

Step 2: Create Task List Header

- * Transaction : IA05 .
- * Initial Screen : Group TL-48, Group Counter 1. Press Enter .
- * Header Fields :
- * Description : Regular Maintenance GR48
- * Planning Plant : 1010
- * Work Center : MK-00 / Plant : 1010
- * Usage : 4 (Plant Maintenance)
- * Status : 4 (Released)
- * Planner Group : P48
- * Maint. Strategy : Z48

Explanation : The header defines who is responsible for the work (Planner Group P48) and which scheduling rules (Strategy Z48) apply to the whole list.

Step 3: Create Operations

- * Click the Operations button (F6) at the top.
- * Enter three rows with this data:
- * Op 10 : Work Center MK-00, Plant 1010, Control Key PM01, Work 30, Unit MIN.
- * Op 20 : (Same as above).
- * Op 30 : (Same as above).

Explanation : Operations are the actual steps the technician follows. Here, we are saying each step takes 30 minutes of mechanical labor.

Step 4: Assign Maintenance Packages (The "Frequencies")

This is the most important part of Task 7. We tell SAP which operation happens when.

- * Select Row 10 (click the box at the far left of the row).
- * Go to Menu: Goto > Maintenance Packages .
- * Check the box for the 1 Month package. Click the Back (Green Arrow) icon.
- * Select Row 20 .
- * Go to Goto > Maintenance Packages and check the 4 Month package. Click Back .
- * Select Row 30 .
- * Go to Goto > Maintenance Packages and check the 12 Month package. Click Back .

Explanation : Now, SAP knows that Op 10 happens every month, but Op 30 only happens once a year.

Step 5: Save

- * Click the Save icon.
- * The message at the bottom should say: "Task list TL-48 saved with group counter 1" .

NEW QUESTION # 14

Create a Maintenance Order with Checklists

The project team evaluates during the implementation project Maintenance Orders with Checklists in SAP S/4HANA Asset Management. The following features need to be checked:

- * Create a Maintenance Order with Checklist
- * Display a Maintenance Order with automatically generated Object List and Checklist.
- * Create a Maintenance Order using an Order Type which is already configured for the checklist process.

Use the following data:

Field	Value
Functional Location	###-01-PRD-01-03-HD
General Maintenance List	A / T-PMCLN / 1

- * Display the previously created Maintenance Order with automatically generated Object List and Checklist.

Answer:

Explanation:

See the Explanation for complete Solution of this Task.

Explanation:

Task 12 Overview

In this task, you will create a maintenance order using a specific order type configured for the checklist process. The system will then

automatically generate an object list and a corresponding checklist based on the equipment and task list assigned.

Step 1: Create a Maintenance Order with Checklist

You need to create a new order using a functional location and a specific task list that triggers the checklist functionality.

* Access the Transaction : Use transaction code IW31 (Create Maintenance Order).

* Initial Screen :

* Order Type : Select an order type already configured for the checklist process (typically PM01 or a specific custom type designated for checklists in your training environment).

* Press Enter .

* Enter Header and Location Data :

* Functional Location : Enter 48-01-PRD-01-03-HD .

* Description : Enter a relevant description (e.g., Pump Checklist Maintenance GR48).

* Assign the Task List :

* Go to the Operations tab or find the task list assignment section.

* General Maintenance Task List : Enter A / T-PMCLEN / 1 .

* Press Enter to validate.

* Save : Click the Save (floppy disk) icon.

Explanation : By assigning this specific functional location and general task list, you are triggering the

"Checklist" integration. The system uses the classification data you set up in Task 11 to determine that a checklist (inspection lot) is required for this job.

Step 2: Display and Verify the Checklist

After saving, you must verify that the system correctly generated the technical components of the checklist.

* Display the Order : Use transaction code IW33 and enter the order number you just created.

* Verify the Object List :

* Navigate to the Object List tab.

* You should see the equipment or functional location listed here with a link to the checklist.

* Verify the Checklist :

* Look for a button or tab labeled Checklists or Inspection Lot within the order.

* The system should show that a checklist has been automatically generated for the repair operations.

Explanation : The goal of this step is to confirm that the "Object List" and "Checklist" were created automatically by the system. This proves the background configuration for QM (Quality Management) integration is working correctly with your maintenance order

NEW QUESTION # 15

.....

Because the SAP Certified Implementation Consultant - SAP S/4HANA Cloud Private Edition, Asset Management (C_S43_2601) (C_S43) practice exams create an environment similar to the real test for its customer so they can feel themselves in the SAP Certified Implementation Consultant - SAP S/4HANA Cloud Private Edition, Asset Management (C_S43_2601) (C_S43) real test center. This specification helps them to remove SAP Certified Implementation Consultant - SAP S/4HANA Cloud Private Edition, Asset Management (C_S43_2601) (C_S43) exam fear and attempt the final test confidently.

Valid Dumps C_S43 Ebook: https://www.practicedump.com/C_S43_actualtests.html

SAP C_S43 Passed The only way for getting more fortune and living a better life is to work hard and grasp every chance as far as possible, Now you also have the opportunity to contact with the Valid Dumps C_S43 Ebook - SAP Certified Implementation Consultant - SAP S/4HANA Cloud Private Edition, Asset Management (C_S43_2601) test guide from our company, So our C_S43 real quiz is versatile and accessible to various exam candidates, SAP C_S43 Passed The functions of the software version are very special.

References to Objects, Virtual Exam - test yourself Valid Dumps C_S43 Ebook with exam questions with a time limit, as if you are taking exams in the Prometric or VUE testing centre, The only way for getting more Valid Dumps C_S43 Files fortune and living a better life is to work hard and grasp every chance as far as possible.

2026 High Hit-Rate C_S43 Passed | 100% Free Valid Dumps SAP Certified Implementation Consultant - SAP S/4HANA Cloud Private Edition, Asset Management (C_S43_2601) Ebook

Now you also have the opportunity to contact with the SAP Certified Implementation Consultant - SAP S/4HANA Cloud Private Edition, Asset Management (C_S43_2601) test guide from our company, So our C_S43 real quiz is versatile and accessible to various exam candidates.

The functions of the software version are very special, C_S43 The SAP Exam SAP Certified Implementation Consultant - SAP S/4HANA Cloud Private Edition, Asset Management (C_S43_2601) certification is indeed beneficial to advancing your SAP career.

- 100% Pass SAP - C_S43 - The Best SAP Certified Implementation Consultant - SAP S/4HANA Cloud Private Edition, Asset Management (C_S43_2601) Passed □ Open { www.exam4labs.com } and search for ▷ C_S43 ◁ to download exam materials for free □ Authentic C_S43 Exam Questions
- Authentic C_S43 Exam Questions □ C_S43 Training Courses □ C_S43 PdfFormat □ Copy URL ➡ www.pdfvce.com □ open and search for ▶ C_S43 ◀ to download for free □ Valid Test C_S43 Tips
- Testking C_S43 Exam Questions □ C_S43 Boot Camp □ C_S43 Knowledge Points □ ➡ www.pass4test.com □ is best website to obtain □ C_S43 □ for free download □ C_S43 Reliable Learning Materials
- C_S43 Passed - 100% Latest Questions Pool □ Search for ▷ C_S43 ◁ and download it for free immediately on [www.pdfvce.com] □ Reliable C_S43 Dumps Ebook
- Free PDF Quiz 2026 SAP Useful C_S43: SAP Certified Implementation Consultant - SAP S/4HANA Cloud Private Edition, Asset Management (C_S43_2601) Passed □ Open website ▶ www.troytecdumps.com ◀ and search for “C_S43” for free download □ C_S43 Reliable Learning Materials
- Accurate SAP - C_S43 - SAP Certified Implementation Consultant - SAP S/4HANA Cloud Private Edition, Asset Management (C_S43_2601) Passed □ Open ➡ www.pdfvce.com □ enter ➡ C_S43 □ and obtain a free download ↓ Dumps C_S43 Questions
- 100% Pass SAP - C_S43 - The Best SAP Certified Implementation Consultant - SAP S/4HANA Cloud Private Edition, Asset Management (C_S43_2601) Passed □ Search for [C_S43] and download it for free immediately on □ www.exam4labs.com □ □ C_S43 Reliable Learning Materials
- 100% Pass SAP - C_S43 - The Best SAP Certified Implementation Consultant - SAP S/4HANA Cloud Private Edition, Asset Management (C_S43_2601) Passed □ Immediately open “www.pdfvce.com” and search for [C_S43] to obtain a free download ♣ C_S43 Boot Camp
- C_S43 New Braindumps Book □ Pass C_S43 Rate □ C_S43 Reliable Learning Materials □ Search for ✨ C_S43 □ ✨ □ and easily obtain a free download on ▷ www.prep4away.com ◁ □ Certified C_S43 Questions
- C_S43 Passed 100% Pass | Pass-Sure C_S43: SAP Certified Implementation Consultant - SAP S/4HANA Cloud Private Edition, Asset Management (C_S43_2601) 100% Pass □ Open website ▶ www.pdfvce.com ◀ and search for ▷ C_S43 ◁ for free download □ C_S43 Latest Exam Question
- C_S43 Boot Camp □ Valid Test C_S43 Tips □ C_S43 Training Courses □ Search on ► www.prepawayete.com □ for ➡ C_S43 □ to obtain exam materials for free download □ C_S43 Latest Exam Question
- hamzaccy1339042.theblogfairly.com, graysoncogh544539.tusblogos.com, e-bookmarks.com, thefairlist.com, lexiecuxp598576.wikikarts.com, getsocialselling.com, asiyatna873873.spintheblog.com, louisepvli450634.blogpayz.com, nevezdis276588.wikilentillas.com, gogogobookmarks.com, Disposable vapes