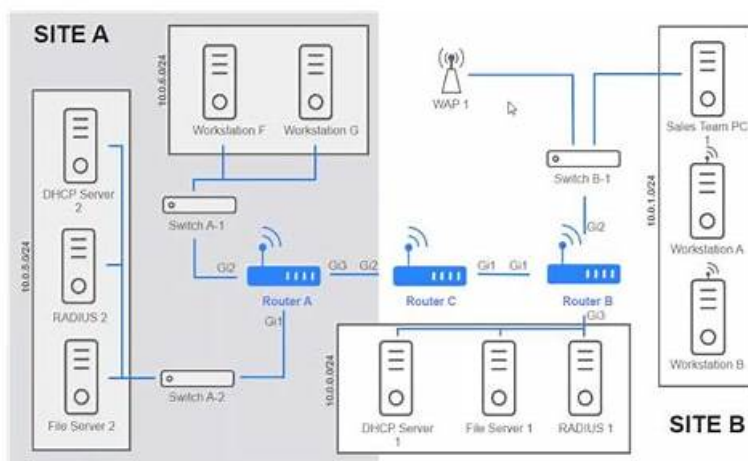


# N10-009 Exam Blueprint - N10-009 Actualtest



BTW, DOWNLOAD part of PrepAwayTest N10-009 dumps from Cloud Storage: [https://drive.google.com/open?id=1H1m10dinarZkLsfUzzm2R\\_qvSwvwgIp](https://drive.google.com/open?id=1H1m10dinarZkLsfUzzm2R_qvSwvwgIp)

PrepAwayTest is a platform that will provide candidates with most effective N10-009 study materials to help them pass their exam. It has been recognized by all of our customers, because it was compiled by many professional experts of our website. Not only did they pass their exam but also got a satisfactory score. These are due to the high quality of our N10-009 study torrent that leads to such a high pass rate.

## CompTIA N10-009 Exam Syllabus Topics:

Topic	Details
Topic 1	<ul style="list-style-type: none"><li>Networking Concepts: For network administrators and IT support professionals, this domain covers</li></ul>
Topic 2	<ul style="list-style-type: none"><li>OSI reference model concepts, Comparison of networking appliances, applications, and functions</li></ul>
Topic 3	<ul style="list-style-type: none"><li>Cloud concepts and connectivity options, and Common networking ports.</li></ul>
Topic 4	<ul style="list-style-type: none"><li>Selection and configuration of wireless devices.</li></ul>
Topic 5	<ul style="list-style-type: none"><li>Network Operations: For IT operations staff and network operations center (NOC) technicians, this part of the exam covers the purpose of organizational processes and procedures and use of network monitoring technologies.</li></ul>
Topic 6	<ul style="list-style-type: none"><li>Network Implementation: For network technicians and junior network engineers, this section covers Characteristics of routing technologies, Configuration of switching technologies and features, and</li></ul>

>> N10-009 Exam Blueprint <<

## N10-009 Actualtest - Valid Exam N10-009 Braindumps

PrepAwayTest proudly says that its product is accurate and trustworthy because it was formulated according to the prescribed content of the CompTIA N10-009 actual test. We offer CompTIA N10-009 Exam Questions free updates for up to 12 months after purchasing. These free updates of actual N10-009 questions will follow the fresh updates in the exam content.

## CompTIA Network+ Certification Exam Sample Questions (Q490-Q495):

### NEW QUESTION # 490

A firewall administrator is mapping a server's internal IP address to an external IP address for public use.

Which of the following is the name of this function?

- A. VIP
- **B. NAT**
- C. BGP
- D. PAT

**Answer: B**

Explanation:

Network Address Translation (NAT) is a process that allows a device, typically a firewall or router, to map private IP addresses to public IP addresses. This enables internal network devices to communicate over the internet using a single or a limited number of public IP addresses.

Static NAT (One-to-One Mapping): Maps a single private IP address to a single public IP address, commonly used for servers that need to be accessible from the internet.

Dynamic NAT (Many-to-Many Mapping): Dynamically assigns a public IP from a pool to internal devices.

PAT (Port Address Translation): A type of NAT where multiple private IPs share a single public IP using different port numbers.

Incorrect Options:

B:VIP (Virtual IP Address): Used in load balancing and high-availability configurations, not for NAT.

C:PAT (Port Address Translation): A specific form of NAT, but the question refers to general NAT, making option A the best choice.

D:BGP (Border Gateway Protocol): A routing protocol used to exchange information between different networks, not related to NAT.

#### NEW QUESTION # 491

Users are unable to access files on their department share located on file\_server 2. The network administrator has been tasked with validating routing between networks hosting workstation A and file server 2.

INSTRUCTIONS

Click on each router to review output, identify any Issues, and configure the appropriate solution. If at any time you would like to bring back the initial state of the simulation, please click the reset All button;

☐

**Answer:**

Explanation:

See the solution configuration below in Explanation.

Explanation:

☐

#### NEW QUESTION # 492

After a recent power outage, users are reporting performance issues accessing the application servers.

Wireless users are also reporting intermittent Internet issues.

INSTRUCTIONS

Click on each tab at the top of the screen. Select a widget to view information, then use the drop-down menus to answer the associated questions. If at any time you would like to bring back the initial state of the simulation, please click the Reset All button.

☐

**Answer:**

Explanation:

See the answer and solution below.

Explanation:

Network Health:

WAN 2 appears to have a lower average latency and loss percentage, which would make it the preferred WAN station for VoIP traffic. VoIP traffic requires low latency and packet loss to ensure good voice quality and reliability. WAN 1 seems to have higher RAM and processor usage, which could also affect the performance of VoIP traffic.

Here's the summary of the key metrics for WAN 1 and WAN 2 from the image provided:

\* WAN 1:

\* Uplink Speed: 10G

\* Total Usage: 26.969GB Up / 1.748GB Down

\* Average Throughput: 353MBps Up / 23.42MBps Down

- \* Loss: 2.51%
- \* Average Latency: 24ms
- \* Jitter: 9.5ms
- \* WAN 2:
- \* Uplink Speed: 1G
- \* Total Usage: 930GB Up / 138GB Down
- \* Average Throughput: 12.21MBps Up / 1.82MBps Down
- \* Loss: 0.01%
- \* Average Latency: 11ms
- \* Jitter: 3.9ms

For VoIP traffic, low latency and jitter are particularly important to ensure voice quality. While WAN 1 has higher bandwidth and throughput, it also has higher latency and jitter compared to WAN 2. However, WAN 2 has much lower loss, lower latency, and lower jitter, which are more favorable for VoIP traffic that is sensitive to delays and variation in packet arrival times.

Given this information, WAN 2 would generally be preferred for VoIP traffic due to its lower latency, lower jitter, and significantly lower loss percentage, despite its lower bandwidth compared to WAN 1. The high bandwidth of WAN 1 may be more suitable for other types of traffic that are less sensitive to latency and jitter, such as bulk data transfers.

Device Monitoring:

the device that is experiencing connectivity issues is the APP Server or Router 1, which has a status of Down.

This means that the server is not responding to network requests or sending any data. You may want to check the physical connection, power supply, and configuration of the APP Server to troubleshoot the problem.

#### NEW QUESTION # 493

A network administrator is planning to implement device monitoring to enhance network visibility. The security that the solution provides authentication and encryption. Which of the following meets these requirements?

- A. NetFlow
- **B. SNMPv3**
- C. SIEM
- D. Syslog

**Answer: B**

Explanation:

SNMPv3 (Simple Network Management Protocol version 3) provides device monitoring with authentication and encryption. This enhances network visibility and security by ensuring that monitoring data is securely transmitted and access to network devices is authenticated.

Authentication: SNMPv3 includes robust mechanisms for authenticating users accessing network devices.

Encryption: It provides encryption to protect the integrity and confidentiality of the data being transmitted.

Network Management: SNMPv3 allows for detailed monitoring and management of network devices, ensuring better control and security.

Network Reference:

CompTIA Network+ N10-007 Official Certification Guide: Covers SNMP versions, their features, and security enhancements in SNMPv3.

Cisco Networking Academy: Provides training on implementing and securing SNMP for network management.

Network+ Certification All-in-One Exam Guide: Explains the benefits and security features of SNMPv3 for network monitoring.

#### NEW QUESTION # 494

A network administrator wants users to be able to authenticate to the corporate network using a port-based authentication framework when accessing both wired and wireless devices. Which of the following is the best security feature to accomplish this task?

- A. MAC filtering
- B. Port security
- C. Access control list
- **D. 802.1X**

**Answer: D**

802.1X is a port-based network access control (PNAC) protocol that provides an authentication mechanism to devices wishing to connect to a LAN or WLAN. It is widely used for secure network access, ensuring that only authenticated devices can access the network, whether they are connecting via wired or wireless means. 802.1X works in conjunction with an authentication server, such as RADIUS, to validate the credentials of devices trying to connect.

Reference: CompTIA Network+ study materials.

• • • • •

**N10-009 Actualtest:** <https://www.prepawaytest.com/CompTIA/N10-009-practice-exam-dumps.html>

- P.S. Free & New N10-009 dumps are available on Google Drive shared by PrepAwayTest: [https://drive.google.com/open?id=1H1m10dinarZkLsfUzzm2R\\_qvSwwgJp](https://drive.google.com/open?id=1H1m10dinarZkLsfUzzm2R_qvSwwgJp)