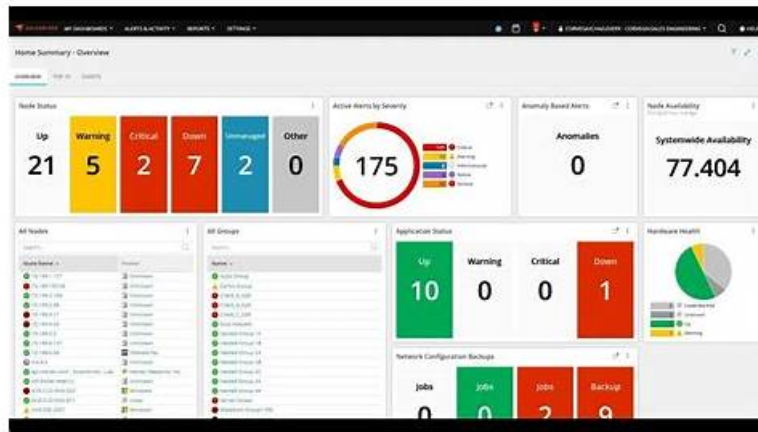


최신버전Observability-Self-Hosted-Fundamentals높은 통과율 시험덤프문제최신덤프는SolarWinds Observability Self-Hosted Fundamentals시험의최고의공 부자료



참고: Itexamdump에서 Google Drive로 공유하는 무료, 최신 Observability-Self-Hosted-Fundamentals 시험 문제집이 있습니다: https://drive.google.com/open?id=1VGLfiaf5cgr0W2FgW_EOqXt7DLS_HPvd

우리 Itexamdump에서는 여러분을 위하여 정확하고 우수한 서비스를 제공하였습니다. 여러분의 고민도 덜어드릴 수 있습니다. 빨리 성공하고 빨리SolarWinds Observability-Self-Hosted-Fundamentals인증시험을 패스하고 싶으시다면 우리 Itexamdump를 장바구니에 넣으시죠 . Itexamdump는 여러분의 아주 좋은 합습가이드가 될것입니다. Itexamdump로 여러분은 같고 싶은 인증서를 빠른시일내에 얻게될것입니다.

SolarWinds Observability-Self-Hosted-Fundamentals 시험요강:

주제	소개
주제 1	<ul style="list-style-type: none"> Alerts: This domain covers creating and managing alerts that notify administrators of important events, threshold breaches, or conditions requiring attention across monitored infrastructure.
주제 2	<ul style="list-style-type: none"> SolarWinds Platform Architecture and Deployment: This domain covers the SolarWinds Platform's structural components, deployment requirements for installation, and network discovery capabilities for identifying and adding devices to the monitoring environment.
주제 3	<ul style="list-style-type: none"> SolarWinds Platform Troubleshooting Tools: This domain covers troubleshooting tools including AppStack and PerfStack for correlating performance data, and Intelligent Mapping for visualizing network topology to identify and resolve issues.
주제 4	<ul style="list-style-type: none"> Node Management: This domain focuses on managing monitored nodes including handling node statuses and working with agents for monitoring and data collection from endpoints.

>> Observability-Self-Hosted-Fundamentals높은 통과율 시험덤프문제 <<

Observability-Self-Hosted-Fundamentals최신 인증시험 덤프데모 & Observability-Self-Hosted-Fundamentals시험합격덤프

Itexamdump에는 베테랑의전문가들로 이루어진 연구팀이 있습니다, 그들은 it지식과 풍부한 경험으로 여러 가지 여러분이SolarWinds인증Observability-Self-Hosted-Fundamentals시험을 패스할 수 있을 자료 등을 만들었습니다, Itexamdump에서는 일년무료 업데이트를 제공하며, Itexamdump의 덤프들은 모두 높은 정확도를 자랑합니다. Itexamdump

선택함으로 여러분이 SolarWinds 인증 Observability-Self-Hosted-Fundamentals 시험에 대한 부담은 사라질 것입니다.

최신 SolarWinds Certified Professional Observability-Self-Hosted-Fundamentals 무료 샘플문제 (Q22-Q27):

질문 # 22

An Intelligent Map has been created of certain administered entities. Entities are to be added before the map is added to an enterprise summary view. When entities are added to the map, it is unable to be saved. What is the cause of the issue?

- A. The user does not have Intelligent Map edit rights.
- B. The user does not have rights to view and / or work with the nodes to be added.
- C. Only map owners can save edits to an original Intelligent Map. A copy is needed.
- D. The owner of the Intelligent Map has set it to read-only.

정답: A

설명:

SolarWinds Intelligent Maps require specific functional permissions within the user's account settings to perform modifications. According to the SolarWinds Platform Administrator Guide, the ability to view a map does not automatically grant the right to edit or save changes to it.

The primary cause for being unable to save edits—such as adding new entities or changing the layout—is that the user does not have Intelligent Map edit rights assigned to their user account. In the SolarWinds Web Console, map permissions are granular. An administrator must go to Settings > All Settings > Manage Accounts, select the user, and ensure the "Map Management" or specific "Allow Map Editing" toggle is set to "Yes". If this permission is absent, the user may still be able to interact with the map in a "live" temporary session (moving nodes around for visualization), but the "Save" button will either be disabled or will result in an error because the platform's security layer prevents permanent changes to the database from unauthorized accounts.

질문 # 23

Which two of the following use cases are utilized for account limitations? (Choose two.)

- A. access to features by departments
- B. access to monitored data by departments
- C. access to monitored data by device types
- D. polling of devices by location

정답: B,C

설명:

Account Limitations are security filters applied at the user or group level to control data visibility within the Web Console. According to the SolarWinds Platform User Account Management guide, these limitations do not affect how data is collected (polling), but rather who can see the resulting data.

The two primary use cases are:

* Access by Department (A): Organizations often use custom properties (like "Department") to tag nodes. By applying an account limitation, you can ensure that the "Finance" team only sees servers tagged for their department, while the "IT" team sees the entire infrastructure.

* Access by Device Type (B): Limitations can be set based on vendor, machine type, or other attributes.

For instance, a Network Operations Center (NOC) team might be limited to seeing only "Cisco" or "Juniper" devices to keep their dashboard focused purely on networking gear.

Option C is incorrect because "access to features" (like the ability to manage alerts or reports) is handled via Account Permissions, not limitations. Option D is incorrect because "polling of devices" is a backend function of the Polling Engines, which is managed via the "Manage Nodes" section rather than user-facing account limitations.

질문 # 24

How is an existing agent's communication mode changed?

- A. modify communication mode in Orion agent settings
- B. configure global agent settings
- C. edit in manage agents page

- D. redeploy agent with desired communication mode

정답: C

설명:

Once a SolarWinds agent is deployed, its communication mode (Active/Passive or Agent-Initiated/Server-Initiated) may need to be adjusted due to network changes or security requirements. According to the SolarWinds Platform Agent Management guide, this is handled through a centralized administrative interface.

The correct method is to edit the agent in the "Manage Agents" page. By navigating to Settings > All Settings > Manage Agents, an administrator can select one or more agents and click "Edit Settings." Within this menu, the "Communication Mode" can be toggled. If the change is possible (i.e., the network allows the new path), the platform sends a command to the agent software on the remote node to switch its listening or polling behavior.

This process is designed to be seamless and does not require a full redeploy (Option D) of the software, which would be time-consuming and disruptive. Modifying "Global Agent Settings" (Option A) would affect all new agents but doesn't specifically target an existing agent's unique configuration. The "Manage Agents" page provides the granular control necessary to modify these communication parameters on a per-node or bulk basis.

질문 # 25

Which two of the following settings are present in modern dashboards and not classic dashboards? (Choose two.)

- A. configure network operations center (NOC) mode
- B. apply account limitations
- C. configure refresh rates
- D. define what is visible in widgets using SWQL

정답: C,D

설명:

Modern Dashboards represent a significant evolution over the legacy "Classic" summary views in the SolarWinds Platform. According to the SolarWinds Platform Administrator Guide, there are several architectural differences designed to improve performance and flexibility.

* Define visible data using SWQL (D): Unlike classic dashboards that rely on a fixed "Data Selection" wizard or pre-built resources, modern dashboards allow administrators to hand-edit SWQL (SolarWinds Query Language) queries directly within the widget configuration. This provides near-infinite flexibility to filter and display data in ways that were previously impossible without custom coding.

* Configure refresh rates (C): Classic dashboards typically rely on the global web console refresh interval (often 5 minutes) or a full page reload. Modern dashboards introduce the ability to set individual refresh intervals for each widget (from 1 second to 24 hours), or configure a "Modern Widget Refresh" default for the entire dashboard. This ensures that critical real-time data is updated more frequently than static inventory data on the same page.

While "NOC mode" (Option B) and "Account Limitations" (Option A) are compatible with the broader SolarWinds environment, they are standard platform features that have existed in classic views for years and are not "unique" new settings specific only to the modern dashboarding engine.

질문 # 26

Which two of the following group settings can be added as member settings? (Choose two.)

- A. intelligent maps
- B. groups
- C. alerts
- D. user accounts

정답: C,D

설명:

In the SolarWinds Platform, groups are more than just static lists; they are logical containers that allow for the inheritance and management of settings across multiple entities. According to the SolarWinds Platform Administrator Guide, when configuring a group, you can define specific "Member Settings" that apply to the objects contained within that group.

The two primary settings that can be integrated as member settings within the group configuration are alerts (A) and user accounts (D).

* Alerts: This allows administrators to associate specific alerting logic directly with group membership.

For example, you can configure group-specific alert thresholds or suppressions that apply only to the members of that group, ensuring that critical infrastructure groups have more sensitive alerting profiles than development or test groups.

* User Accounts: This refers to the ability to link specific user or group account permissions to the group itself. This is often used in multi-tenant or departmentalized environments where a user account is granted a "Group Limitation." By adding user account settings as a member setting, you can define which users have the rights to view, manage, or edit the specific entities within that group. While you can nest "groups" (Option B) within each other, they are considered members themselves rather than a "member setting". Similarly, "Intelligent Maps" (Option C) are visualization objects that can contain groups, but they are not a configurable setting applied to the members of a group within the standard group management wizard.

질문 # 27

.....

근 몇년간 IT산업이 전례없이 신속히 발전하여 IT업계에 종사하는 분들이 여느때보다 많습니다. 경쟁이 이와같이 치열한 환경속에서 누구도 대체할수 없는 자기만의 자리를 찾으려면 IT인증자격증취득은 무조건 해야 하는것이 아닌가 싶습니다. SolarWinds인증 Observability-Self-Hosted-Fundamentals시험은 IT인증시험중 가장 인기있는 시험입니다. Itexamdump에서는 여러분이SolarWinds인증 Observability-Self-Hosted-Fundamentals시험을 한방에 패스하도록 실제시험문제에 대비한SolarWinds인증 Observability-Self-Hosted-Fundamentals덤프를 발췌하여 저렴한 가격에 제공해드립니다. 시험패스 못할시 덤프비용은 환불처리 해드리기에 고객님의 아무런 페를 끼치지 않을것입니다.

Observability-Self-Hosted-Fundamentals최신 인증 시험 덤프데모 : <https://www.itexamdump.com/Observability-Self-Hosted-Fundamentals.html>

- Observability-Self-Hosted-Fundamentals높은 통과율 시험덤프문제 인증시험패스하여 자격증 취득하기 □ 무료 다운로드를 위해“ Observability-Self-Hosted-Fundamentals ”를 검색하려면 「 www.itdumpskr.com 」 을(를) 입력하십시오Observability-Self-Hosted-Fundamentals시험문제집
- Observability-Self-Hosted-Fundamentals완벽한 시험자료 □ Observability-Self-Hosted-Fundamentals최신 업데이트 공부자료 □ Observability-Self-Hosted-Fundamentals최신 업데이트버전 인증덤프 □ □ www.itdumpskr.com □에서 검색만 하면⇒ Observability-Self-Hosted-Fundamentals □를 무료로 다운로드할 수 있습니다Observability-Self-Hosted-Fundamentals시험문제집
- Observability-Self-Hosted-Fundamentals높은 통과율 공부문제 □ Observability-Self-Hosted-Fundamentals시험대비 공부자료 □ Observability-Self-Hosted-Fundamentals시험문제집 □ 무료 다운로드를 위해 지금⇒ www.pass4test.net □에서 「 Observability-Self-Hosted-Fundamentals 」 검색Observability-Self-Hosted-Fundamentals 인기자격증 시험덤프공부
- Observability-Self-Hosted-Fundamentals높은 통과율 시험덤프문제 최신 시험덤프공부자료 □ [www.itdumpskr.com]에서 ⇒ Observability-Self-Hosted-Fundamentals □를 검색하고 무료 다운로드 받기 Observability-Self-Hosted-Fundamentals높은 통과율 공부문제
- 시험패스에 유효한 Observability-Self-Hosted-Fundamentals높은 통과율 시험덤프문제 덤프공부자료 □ □ www.koreadumps.com □웹사이트에서 (Observability-Self-Hosted-Fundamentals) 를 열고 검색하여 무료 다운로드 Observability-Self-Hosted-Fundamentals합격보장 가능 시험대비자료
- Observability-Self-Hosted-Fundamentals높은 통과율 시험덤프문제 최신 인기 인증 시험덤프문제 □ 무료로 쉽게 다운로드하려면> www.itdumpskr.com <에서 □ Observability-Self-Hosted-Fundamentals □를 검색하세요 Observability-Self-Hosted-Fundamentals최신 업데이트버전 인증덤프
- Observability-Self-Hosted-Fundamentals시험대비 최신버전 덤프샘플 □ Observability-Self-Hosted-Fundamentals인증 시험 인기 덤프문제 □ Observability-Self-Hosted-Fundamentals시험문제 □ 무료 다운로드를 위해 지금“ www.itdumpskr.com ”에서> Observability-Self-Hosted-Fundamentals □검색Observability-Self-Hosted-Fundamentals합격보장 가능 시험
- Observability-Self-Hosted-Fundamentals높은 통과율 공부문제 □ Observability-Self-Hosted-Fundamentals인기덤프 공부 □ Observability-Self-Hosted-Fundamentals퍼펙트 최신 덤프모음집 □ 무료로 쉽게 다운로드하려면⇒ www.itdumpskr.com <에서 □ Observability-Self-Hosted-Fundamentals □를 검색하세요 Observability-Self-Hosted-Fundamentals시험문제집
- 시험패스에 유효한 Observability-Self-Hosted-Fundamentals높은 통과율 시험덤프문제 덤프공부자료 □ 무료로 쉽게 다운로드하려면□ www.pass4test.net □에서⇒ Observability-Self-Hosted-Fundamentals □를 검색하세요 Observability-Self-Hosted-Fundamentals시험대비 공부자료
- Observability-Self-Hosted-Fundamentals높은 통과율 시험덤프문제 최신 시험덤프공부자료 □ 무료로 쉽게 다운로드하려면★ www.itdumpskr.com □★□에서✓ Observability-Self-Hosted-Fundamentals □✓□를 검색하세요 Observability-Self-Hosted-Fundamentals인증 시험 인기 덤프문제
- Observability-Self-Hosted-Fundamentals최신 업데이트버전 인증덤프 □ Observability-Self-Hosted-Fundamentals합격보장 가능 인증덤프 □ Observability-Self-Hosted-Fundamentals합격보장 가능 시험대비자료 ✓□ □ kr.fast2test.com □을(를) 열고□ Observability-Self-Hosted-Fundamentals □를 입력하고 무료 다운로드를 받으십시오 Observability-Self-Hosted-Fundamentals높은 통과율 공부문제

- laylagips450272.wikiexcerpt.com, georgiazbdn782203.ourcodeblog.com, tasneemxowk598143.bloggerswise.com, binksites.com, kallumtkql875245.anchor-blog.com, www.stes.tyc.edu.tw, tripsbookmarks.com, www.stes.tyc.edu.tw, oisinhvz980311.lotrlegendswiki.com, siambookmark.com, Disposable vapes

그 외, Itexamdump Observability-Self-Hosted-Fundamentals 시험 문제집 일부가 지금은 무료입니다:
https://drive.google.com/open?id=1VGLfiaf5cgr0W2FgW_EOqXf7DLS_HPvd