

Valid Dumps 300-510 Ppt, 100% 300-510 Accuracy

Leads4Pass

<https://www.leads4pass.com/300-510.html>
2024 Latest leads4pass 300-510 PDF and VCE dumps Download

QUESTION 1

What is the difference between a source tree and a shared tree in a multicast environment?

- A. To route traffic from source to receiver a source tree uses a link-state routing protocol and a shared tree uses a distance-vector routing protocol.
- B. A source tree has its root at the source, and a shared tree has its root at a designated rendezvous point.
- C. To stream multicast from source to receiver, a source tree uses PIM-SM and a shared tree uses PIM-DM.
- D. Source trees are the default type for bidirectional PIM, and PIM-DM uses shared trees by default.

Correct Answer: B

Reference: https://www.cisco.com/c/en/us/td/docs/ios-xml/ios/ipmulti_pim/configuration/xr-16-5/imc-pim-xr-16-5-book/imc-tech-overview.html

QUESTION 2

For which reason do you deploy BGP confederations within a BGP transit backbone?

- A. to support a larger number of eBGP peer sessions
- B. to increase the number of routes that can be redistributed between the running IGP and BGP
- C. to reduce the number of eBGP routes that must be shared between autonomous systems
- D. to reduce the number of iBGP peering sessions

Correct Answer: D

QUESTION 3

An engineer is troubleshooting a connectivity issue across the MPLS network and is verifying the forwarding behavior of packets.

Which table does the engineer look at to verify the forwarding behavior of an IP packet as it enters the MPLS network at the ingress LSR?

- A. LFIB
- B. LIB
- C. RiB
- D. FiB

Correct Answer: A

<https://community.cisco.com/t5/image/serverpage/image-id/44142/C3B9032F415B1395?v=v2>

300-510 VCE Dumps | 300-510 Study Guide | 300-510 Exam Questions

2 / 11

P.S. Free 2026 Cisco 300-510 dumps are available on Google Drive shared by TestSimulate: https://drive.google.com/open?id=18b6IC-F_VRGJh5tKIqTDk7TOTZkZY0dF

All these three Cisco 300-510 exam questions formats contain the real and updated 300-510 exam questions. These Implementing Cisco Service Provider Advanced Routing Solutions (300-510) exam questions are being presented in practice test software and PDF dumps file formats. The 300-510 desktop practice test software is easy to use and install on your desktop computers. Whereas the other Cisco 300-510 web-based practice test software is concerned, this is a simple browser-based application that works with all operating systems. Both practice tests are customizable, simulate actual exam scenarios, and help you overcome mistakes.

TestSimulate's Cisco 300-510 exam training materials' simulation is particularly high. You can encounter the same questions in the real real exam. This only shows that the ability of our IT elite team is really high. Now many ambitious IT staff to make their own configuration files compatible with the market demand, to realize their ideals through these hot IT exam certification. Achieved excellent results in the Cisco 300-510 Exam. With the Cisco 300-510 exam training of TestSimulate, the door of the dream will open for you.

>> Valid Dumps 300-510 Ppt <<

100% 300-510 Accuracy - 300-510 Latest Practice Questions

These Cisco 300-510 questions will give you an accurate foresight of the Cisco 300-510 examination format. This Cisco 300-510 is

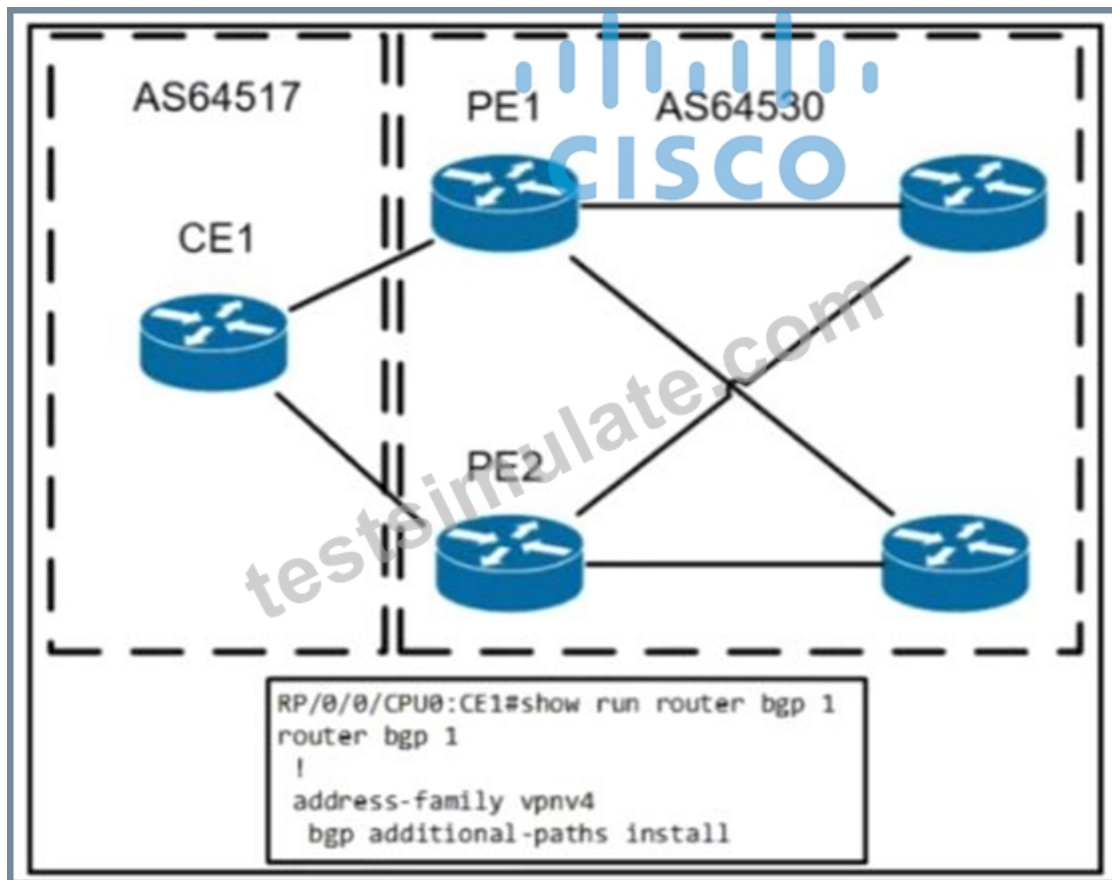
easily downloadable and even printable, this way you can also pursue paper study if that is your preferred method. The portability of this material makes it handier since you can access it on any smart device such as smart phones, laptops, tablets, etc. These Cisco 300-510 features make this prep method the most comfortable one.

Candidates for the Cisco 300-510 Exam should have a strong foundation in networking technologies and protocols, as well as experience working in a service provider environment. They should be familiar with advanced routing technologies such as BGP, OSPF, IS-IS, and MPLS, and have experience designing and implementing complex routing solutions. Candidates should also be familiar with network security, network management, and network troubleshooting techniques, as these skills are critical for success in a service provider environment.

Cisco Implementing Cisco Service Provider Advanced Routing Solutions Sample Questions (Q60-Q65):

NEW QUESTION # 60

Refer to the exhibit.



A network operators configuring BGP PIC on CE1 on already established neighborships with PE1 and PE2 inside the fully converged MPLS network Which element needs to be implemented to make this feature function effectively?

- A. BGP import export policies must be applied on all devices for the routes needing BGP for PIC
- **B. Bidirectional Forwarding Detection must be applied to the upstream facing BGP interfaces.**
- C. community of 1 10 must be used to denote the PIC feature set to the routing protocol
- D. The operator must ensure that all prefixes have the same next-hop from PE1 and PE2 for BGP PICA reserved BGP

Answer: B

NEW QUESTION # 61

Refer to the exhibit. Which tree does multicast traffic follow?

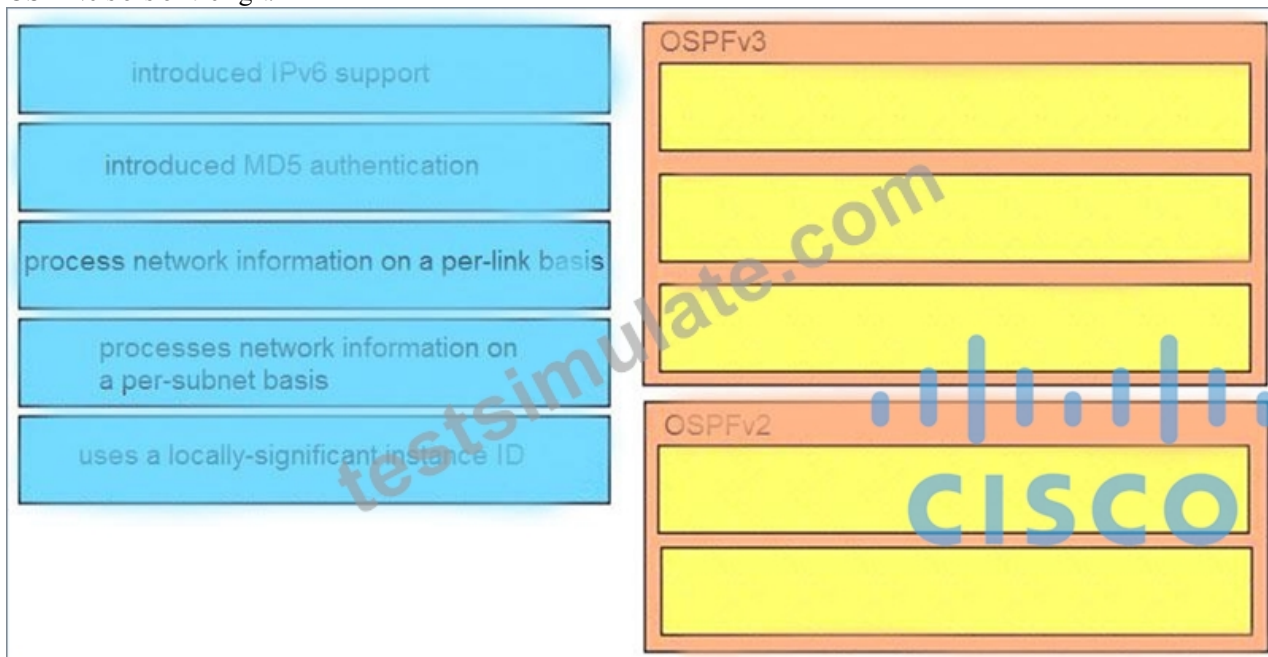


- A. shared tree
- B. MDT default
- C. MDT voice
- D. source tree

Answer: B

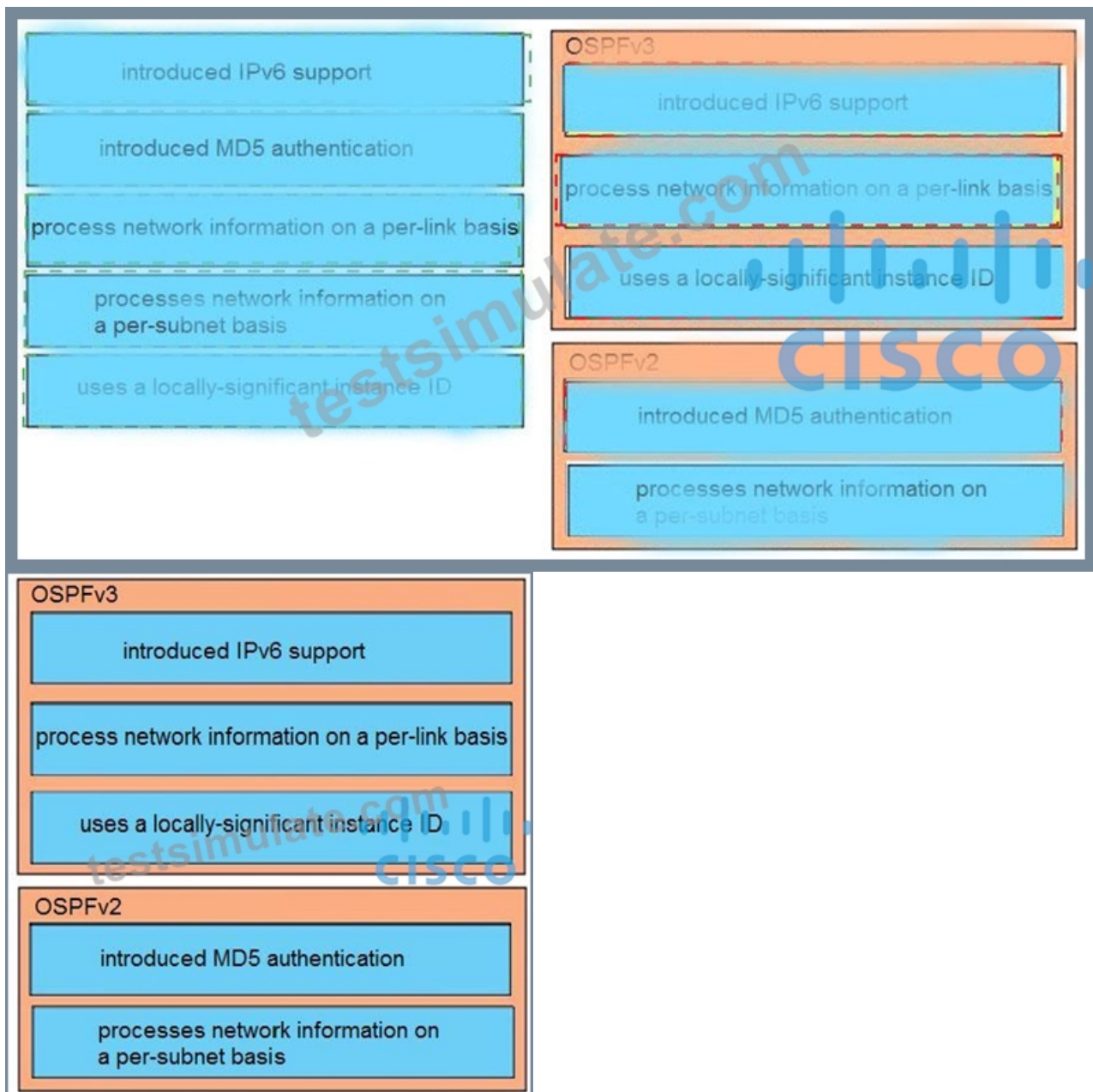
NEW QUESTION # 62

Compare different features between OSPFv2 and OSPFv3. Drag and drop the descriptions of OSPF from the left onto the correct OSPF versions on the right.



Answer:

Explanation:



NEW QUESTION # 63

After an engineer configures BGP in R1, it starts receiving this message

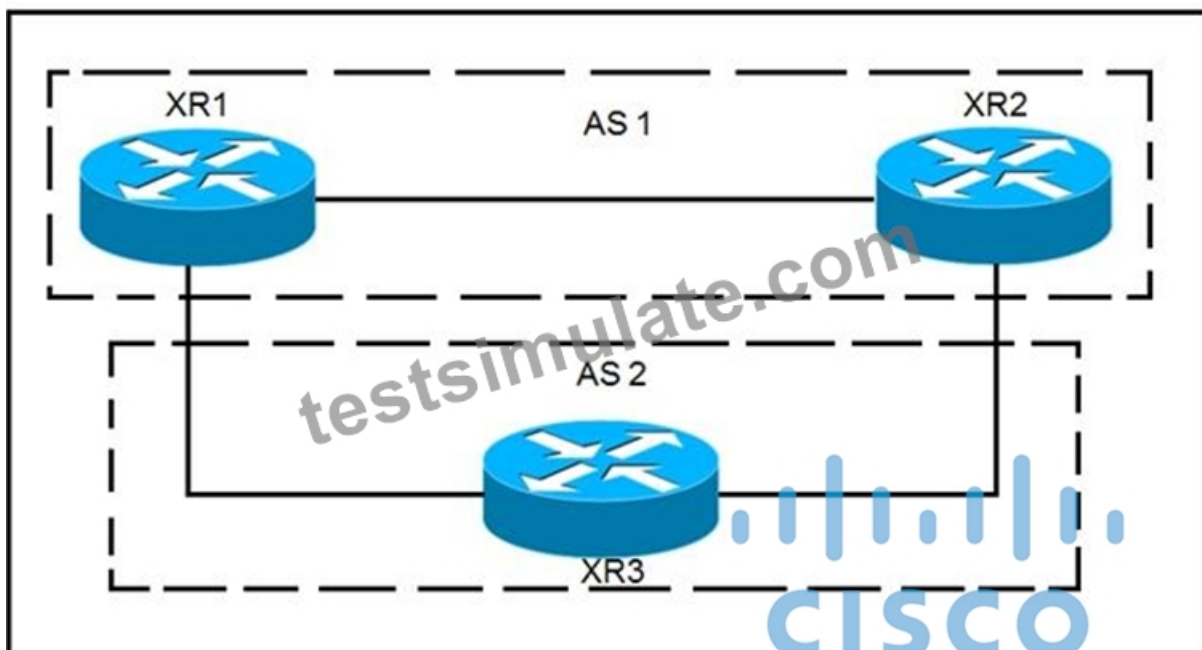
*Jun 29 13:30:50.122: %BGP-5-ADJCHANGE: neighbor 192.168.10.1 Down User reset Jun 29 13:30:52.341: %BGP-3-NOTIFICATION: sent to neighbor 192.168.10.1 2/6 (unacceptable hold time) 0 bytes Which action makes the peering come back up again?

- A. Set up a hold-down timer higher.
- B. Make a soft reset to the peer.
- C. Set up a minimum hold-down timer higher.
- D. Set up a hello timer higher.

Answer: C

NEW QUESTION # 64

Refer to the exhibit.



XR1 and XR2 are sending the prefix 10.11.11.0/24 to XR3. A configured policy on XR1 is incorrectly prepending AS path 11 11 12 12 onto this prefix. A network operator wants to add a policy onto XR3 that will not allow the falsely prepending prefix from being installed. Which policy configuration applied to the XR3 neighbor configuration for XR1 can accomplish this requirement without impact to other or future received routes?

a. `route-policy NO_PREPEND`
 `if as-path passes-through '11' then`
 `pass`
 `else`
 `drop`
 `endif`
 `end-policy`

b. `route-policy NO_PREPEND`
 `if as-path prepends`
 `drop`
 `else`
 `pass`
 `endif`
 `end-policy`


```

1. route-policy NO_PREPEND
   if as-path passes-through '1' then
       pass
   else
       drop
   endif
end-policy

2. route-policy NO_PREPEND
   if as-path passes-through '11' then
       drop
   else
       pass
   endif
end-policy

```

- A. Option B
- **B. Option D**
- C. Option C
- D. Option A

Answer: B

Explanation:

Reference:

b_routing_cr41crs/b_routing_cr41crs_chapter_01000.html#wp3850885229

NEW QUESTION # 65

.....

Our 300-510 training materials impressed all our customers by the help as well as our after-sales services. We offer the most considerate after-sales services for you 24/7 with the help of patient staff and employees. They are all patient and enthusiastic to offer help on 300-510 Study Guide. If you have some questions about our 300-510 exam braindumps, ask for our after-sales agent, they will solve the problems for you as soon as possible.

100% 300-510 Accuracy: <https://www.testsimulate.com/300-510-study-materials.html>

- Unique, Full Length Exams - New Cisco 300-510 Practice Exam ☐ Search for > 300-510 < on 「 www.pdf dumps.com 」 immediately to obtain a free download ☐ Valid 300-510 Exam Dumps
- 300-510 Learning Engine ☐ Detailed 300-510 Study Dumps ☐ Exam 300-510 Cram Review ☐ Immediately open ☐ www.pdfvce.com ☐ and search for > 300-510 < to obtain a free download ☐ 300-510 Learning Engine
- Top Valid Dumps 300-510 Ppt - Leading Provider in Qualification Exams - Effective 100% 300-510 Accuracy ☐ Go to website 「 www.dumpsmaterials.com 」 open and search for ☐ 300-510 ☐ to download for free ☐ 300-510 Test Guide Online
- Training 300-510 Solutions ☐ 300-510 Valid Exam Online ☐ Books 300-510 PDF ☐ Easily obtain ➡ 300-510 ☐ ☐ for free download through 「 www.pdfvce.com 」 ☐ Pass4sure 300-510 Pass Guide
- Exam 300-510 Cram Review ☐ 300-510 Reliable Test Online ☐ 300-510 Valid Exam Online ☐ Open 「 www.practicevce.com 」 enter ⇒ 300-510 ⇐ and obtain a free download ☐ Exam 300-510 Cram Review
- 300-510 Exam Preparation: Implementing Cisco Service Provider Advanced Routing Solutions - 300-510 Practice Labs ☐ Download 「 300-510 」 for free by simply entering 《 www.pdfvce.com 》 website ☐ 300-510 Latest Dumps Free
- 100% Pass 2026 Cisco 300-510 Latest Valid Dumps Ppt ☐ Download 「 300-510 」 for free by simply entering ➡ www.torrentvce.com ☐ website ☐ 300-510 Reliable Test Online
- 300-510 Reliable Exam Tips ☐ 300-510 Certification Book Torrent ☐ 300-510 Valid Exam Online ☐ The page for free download of ☐ 300-510 ☐ on ➤ www.pdfvce.com ☐ will open immediately ☐ 300-510 Test Guide Online

- Pass4sure 300-510 Pass Guide □ Pass4sure 300-510 Pass Guide □ Valid 300-510 Exam Dumps □ Search for ➤ 300-510 □ and easily obtain a free download on ► www.exam4labs.com ◀ □ 300-510 Test Guide Online
- Cisco - Newest 300-510 - Valid Dumps Implementing Cisco Service Provider Advanced Routing Solutions Ppt □ Search for ➡ 300-510 □ and easily obtain a free download on 《 www.pdfvce.com 》 □ Reliable 300-510 Test Answers
- 2026 The Best Accurate Valid Dumps 300-510 Ppt Help You Pass 300-510 Easily □□ Open □ www.troytecdumps.com □ enter ➡➡ 300-510 □ and obtain a free download □ Exam 300-510 Cram Review
- www.stes.tyc.edu.tw, prepelite.in, myelearning.uk, www.stes.tyc.edu.tw, www.stes.tyc.edu.tw, www.stes.tyc.edu.tw, www.stes.tyc.edu.tw, myportal.utt.edu.tt, myportal.utt.edu.tt, myportal.utt.edu.tt, myportal.utt.edu.tt, myportal.utt.edu.tt, myportal.utt.edu.tt, myportal.utt.edu.tt, myportal.utt.edu.tt, myportal.utt.edu.tt, myportal.utt.edu.tt, myportal.utt.edu.tt, myportal.utt.edu.tt, myportal.utt.edu.tt, myportal.utt.edu.tt, myportal.utt.edu.tt, www.stes.tyc.edu.tw, Disposable vapes

P.S. Free & New 300-510 dumps are available on Google Drive shared by TestSimulate: https://drive.google.com/open?id=18b6IC-F_VRGJh5tKIqTDk7TOTZkZY0dF