

SAP C-S43-2601퍼펙트최신공부자료 & C-S43-2601시험 유형



DumpTOP는 한국어로 온라인상담과 메일상담을 받습니다. SAP C-C4H430-94덤프구매후 일년동안 무료 업데이트서비스를 제공해드리며SAP C-C4H430-94시험에서 떨어지는 경우SAP C-C4H430-94덤프비용 전액을 환불해드리고 고객님의 부담을 덜어드립니다. 이는 고민고민 하지마시고 덤프 받아주세요.

IT인증시험은 국제적으로 인정받는 자격증을 취득하는 과정이라 난이도가 아주 높습니다. SAP인증 C-C4H430-94시험은 IT인증자격증을 취득하는 시험과목입니다.어떻게 하면 난이도가 높아도정할 자신이 없는 자격증을 한방에 취득할수 있을까요? 그 답은DumpTOP에서 찾을수 있습니다. DumpTOP에서는 모든 IT인증시험에 대비한고품질 시험공부자료를 제공해드립니다. DumpTOP에서 연구제작한 SAP인증 C-C4H430-94덤프SAP인증 C-C4H430-94시험을 준비해보세요. 시험패스가 한결 편해집니다.

>> C-C4H430-94퍼펙트 최신버전 공부자료 <<

SAP C-C4H430-94퍼펙트 최신버전 문제 - C-C4H430-94높은 통과율 덤프문제

DumpTOP는 많은 분들이 SAP C-C4H430-94인증시험을 응시하여 성공하도록 도와주는 사이트입니다. DumpTOP의 C-C4H430-94덤프는 모두 엘리트한 전문가들이 만들어낸 만큼 시험문제의 적중률은 아주 높습니다. 거의 100%의 정확도를 자랑하고 있습니다. 아마 많은 유사한 사이트들도 많습니. 이러한 사이트에서 학습가이드와 온라인서비스도 지원되고 있습니다만 DumpTOP는 이미 이러한 C-C4H430-94 사이트를 뛰어넘은 실력으로 업계에서 우리만의 이미지를 지키고 있습니다. DumpTOP는 정확한 문제와 답만 제공하고 또한 그 어느 사이트보다도 빠른 업데이트로 여러분의 인증시험을 안전하게 패스하도록 합니다.

C-C4H430-94퍼펙트최신버전공부자료인기인증시험덤프

SAP C-S43-2601 덤프를 구매하여 1년무료 업데이트서비스를 제공해드립니다. 1년무료 업데이트 서비스란 Pass4Test에서SAP C-S43-2601덤프를 구매한 분은 구매일부터 추후 일년간 SAP C-S43-2601덤프가 업데이트될때마다 업데이트된 가장 최신버전을 무료로 제공받는 서비스를 가리킵니다. 1년무료 업데이트 서비스는SAP C-S43-2601시험불합격받을시 덤프비용환불신청하면 종료됩니다.

퍼펙트한SAP C-S43-2601시험대비덤프자료는 Pass4Test가 전문입니다. SAP C-S43-2601덤프를 다운받아 가장 쉬운 시험준비를 하여 한방에 패스가 되는것입니다. 다같이 SAP C-S43-2601덤프로 시험패스에 주문걸어 보아요. 마술처럼SAP C-S43-2601시험합격이 실현될것입니다.

>> SAP C-S43-2601퍼펙트 최신 공부자료 <<

C-S43-2601시험유형 & C-S43-2601덤프데모문제 다운

Pass4Test의SAP C-S43-2601 인증시험덤프는 자주 업데이트 되고, 오래 되고 더 이상 사용 하지 않는 문제들은 바로 삭제해버리며 새로운 최신 문제들을 추가 합니다. 이는 응시자가 확실하고도 빠르게SAP C-S43-2601덤프를 마스터하고SAP C-S43-2601시험을 패스할수 있도록 하는 또 하나의 보장입니다. 매력만점SAP C-S43-2601덤프 강력 추천합니다.

최신 SAP Certified Application Associate C-S43-2601 무료샘플문제 (Q11-Q16):

질문 # 11

Task 6: Configure Maintenance Order Types and work with Maintenance Orders The project team evaluates during the implementation project Maintenance Orders in SAP S/4HANA Asset Management. The following features need to be checked:

- * Configure a Maintenance Order Type and create a Maintenance Order
- * Create a Time Confirmation a Maintenance Order
- * Prepare a Maintenance Order for Completion
- * Create a Maintenance Order and save it.

Note:

Make sure that you have maintained all required customizing settings for the Maintenance Order Type.

Use the following information at header level:

Field	Value
Order Type	ZZ##
Description	Repair pump
Priority	Medium
Equipment	T-PA##
Planning Plant	1010
Maintenance activity type	003 Repair
Plnd Costing Va	ZZ01
Act. Costing Va	ZZ01
Priority Type	PM

Plan a Maintenance Order Operation and use the following information:

Field	Value
WkCtr	T-ME##
Plnt	1010
Ctrl key	PM01
Work durtn	2 HR

* Create a Time Confirmation for the just created Maintenance Order. Use the following information:

Field	Value
Work Center	T-ME##
Work Center Plant	1010
Actual Work	2 HR
Activity Type	1410
Final Confirmtn	x (select indicator)

* Display the Actual Costs assigned to the just created Maintenance Order and set it to Technically Completed. Display the Settlement Rule.

note:

The following information is displayed:

Field	Value
Actual Costs / Internal Labor	60,00 EUR
Sys.Status	TECO CNF JBFI NMAT PRC SETC
Acct Assignment Cat. (via SAP GUI)	CTR
Settlement Category (via FLP)	Cost Center
Settlement Receiver	4110

정답:

설명:

See the Explanation for complete Solution of this Task.

Explanation:

Task 6 Overview

The goal of this task is to process a repair from start to finish. You will convert the "leaking pump" notification into a work order, plan the labor, record the work performed, and technically close the file.

Step 1: Create the Maintenance Order from Notification

Instead of starting from scratch, we link the order to the notification you created in Task 5.

* Access the Transaction : Use transaction code IW31 .

* Initial Screen :

* Order Type : PM01.

* Notification : Enter your notification number (e.g., 10000147).

* Press Enter .

* Header Data :

* The description "Pump is leaking" should pull in automatically.

* Main Work Center : Ensure it is T-ME48.

Explanation : By entering the notification number, SAP automatically pulls in the equipment, functional location, and problem description, ensuring "data integrity" across the maintenance process.

Step 2: Plan the Operations (Labor)

You must tell the system how much effort the repair requires.

* Go to the Operations Tab .

* Enter Planning Data :

* Work : 2.

* Unit (Un) : H (Hours).

* Number : 1 (One person).

* Duration (Dur.) : 2 / Unit : H.

* Add Enhancement Data :

* Click the Additional Data tab - > Enhancement sub-tab.

* In the Field Key box, use the search (F4) to select 0000001 (User-defined fields).

* In the first text box (Text 1), type: Industrial Z48.

Explanation : Planning the work allows the system to calculate the estimated cost of the repair. The "Enhancement" data is used to store specific technical details (like the motor type) that aren't in the standard SAP fields.

Step 3: Release the Order

An order in "Created" (CRTD) status is just a plan. To start work, it must be "Released" (REL).

* Release : Look at the top toolbar and click the Green Flag icon .

* Verify Status : The "Sys.Status" field should now include REL.

* Save : Click the Save (floppy disk) icon.

Explanation : Releasing the order is the "Green Light" for the shop floor. It allows technicians to charge time to the job and warehouse staff to issue parts.

Step 4: Time Confirmation (Recording the Work)

Now we record that the repair is physically finished.

* Access the Transaction : Use transaction code IW41 .

* Enter Data :

* Order : Enter your order number (e.g., 4000395).

* Actual Work : 2 H.

* Check the boxes for Final Confirmation and No Remaining Work .

* Confirmation Text : Pump repaired and tested.

* Save : Click the Save icon.

Explanation : This step captures the "Actual Cost." SAP multiplies the 2 hours of labor by the hourly rate of work center T-ME48 to calculate exactly how much this repair cost the company.

Step 5: Technical Completion (TECO)

The final administrative step to close the repair file.

* Access the Transaction : Use transaction code IW32 .

* Complete Technically :

* Go to menu: Order > Functions > Complete > Complete (technically) .

* Click the Green Checkmark on the popup window.

* Save : Click the Save icon.

Explanation : TECO (Technical Completion) locks the order. It tells the system the asset is back in service and prevents any further labor or parts from being charged to this specific job.

질문 # 12

Create a Maintenance Order with Checklists

The project team evaluates during the implementation project Maintenance Orders with Checklists in SAP S/4HANA Asset Management. The following features need to be checked:

* Create a Maintenance Order with Checklist

* Display a Maintenance Order with automatically generated Object List and Checklist.

* Create a Maintenance Order using an Order Type which is already configured for the checklist process.

Use the following data:

Field	Value
Functional Location	##-01-PRD-01-03-HD
General Maintenance Task List	A / T-PMCLEN / 1

* Display the previously created Maintenance Order with automatically generated Object List and Checklist.

정답 :

설명 :

See the Explanation for complete Solution of this Task.

Explanation:

Task 12 Overview

In this task, you will create a maintenance order using a specific order type configured for the checklist process. The system will then automatically generate an object list and a corresponding checklist based on the equipment and task list assigned.

Step 1: Create a Maintenance Order with Checklist

You need to create a new order using a functional location and a specific task list that triggers the checklist functionality.

* Access the Transaction : Use transaction code IW31 (Create Maintenance Order).

* Initial Screen :

* Order Type : Select an order type already configured for the checklist process (typically PM01 or a specific custom type designated for checklists in your training environment).

* Press Enter .

* Enter Header and Location Data :

* Functional Location : Enter 48-01-PRD-01-03-HD .

* Description : Enter a relevant description (e.g., Pump Checklist Maintenance GR48).

* Assign the Task List :

* Go to the Operations tab or find the task list assignment section.

* General Maintenance Task List : Enter A / T-PMCLEN / 1 .

* Press Enter to validate.

* Save : Click the Save (floppy disk) icon.

Explanation : By assigning this specific functional location and general task list, you are triggering the

"Checklist" integration. The system uses the classification data you set up in Task 11 to determine that a checklist (inspection lot) is required for this job.

Step 2: Display and Verify the Checklist

After saving, you must verify that the system correctly generated the technical components of the checklist.

* Display the Order : Use transaction code IW33 and enter the order number you just created.

- * Verify the Object List :
- * Navigate to the Object List tab.
- * You should see the equipment or functional location listed here with a link to the checklist.
- * Verify the Checklist :
- * Look for a button or tab labeled Checklists or Inspection Lot within the order.
- * The system should show that a checklist has been automatically generated for the repair operations.

Explanation : The goal of this step is to confirm that the "Object List" and "Checklist" were created automatically by the system. This proves the background configuration for QM (Quality Management) integration is working correctly with your maintenance order

질문 # 13

Use Phase-Based Maintenance Processing

The project team evaluates during the implementation project Phase-Based Maintenance Processing in SAP S/4HANA Asset Management. The following features need to be checked:

- * Initiate and screen a Maintenance Notification
- * Plan Maintenance Order and send it for approval
- * Create a Maintenance Notification using an already available notification type which is suitable for phase-based maintenance and save it.

Use the following data:

Field	Value
Technical Object	T-PB##
Current Location	Production Line 1
Detection Method	Continuous Condition Monitoring
Operational Effect	Production restricted
Description	Defective pump (phase-based)

- * Screen and accept the just created Maintenance Notification.
- * Create an Order (Phase-based) for your accepted notification and submit it for approval.

Use the following data:

Field	Value
Technical Object	T-PB##
Operation 0010 - Description	Repair damage
Operation 0010 - Work	

정답 :

설명:

See the Explanation for complete Solution of this Task.

Explanation:

Task 10 Overview

This task evaluates your ability to manage the newer, phase-led maintenance workflow in SAP S/4HANA.

Unlike the traditional "emergency" repair you did earlier, this process includes formal screening and approval steps Step 1: Create a Phase-Based Maintenance Notification In this step, you initiate the request.

- * Access the Transaction : Use transaction IW21 or the Fiori app Create Maintenance Request .
- * Select Notification Type : Use a type configured for phase-based maintenance (typically Y1 - Maintenance Request).
- * Enter the Following Data :
- * Technical Object : T-PB48
- * Description : Defective pump (phase-based)
- * Current Location : Production Line 1
- * Detection Method : Continuous Condition Monitoring
- * Operational Effect : Production restricted

* Save : Note the notification number generated.

Explanation : This step "initiates" the maintenance process. In phase-based maintenance, the notification starts in the Initiation phase, where it must be reviewed before any work is planned.

Step 2: Screen and Accept the Notification

As a "Maintenance Coordinator," you must now review the request.

* Access the Fiori App : Open Screen Maintenance Requests .

* Locate Your Notification : Find the notification you just created for T-PB48.

* Perform Screening :

* Review the details to ensure they are complete.

* Click Accept to move it to the next phase.

Explanation : "Screening" is a quality gate. It ensures that the maintenance team only spends time planning valid, well-described issues. Once accepted, the notification moves from the Initiation phase to the Screening phase and finally becomes available for planning.

Step 3: Create and Plan the Phase-Based Order

Now you will create the formal work order for the accepted request.

* Create Order : From within the accepted notification, or using the Manage Maintenance Backlog app, choose to Create Order .

* Enter Planning Data :

* Technical Object : T-PB48

* Operation 0010 Description : Repair damage

* Operation 0010 Work : 2 h

* Submit for Approval : Look for the Submit for Approval button at the top of the order screen.

Explanation : This step moves the order into the Planning phase. By submitting it for approval, you are requesting the budget and resources to perform the work. The order status will change to indicate it is

"Waiting for Approval"

질문 # 14

In the following assessment you will slip into the role of a consultant implementing SAP S/4HANA Asset Management OnPrem/Private Cloud for Machine Manufacturing Inc. . You need to fulfill various system tasks to setup certain business processes and test them.

Note:

In the task descriptions is no information provided if and/or how Asset Management specific customizing settings need to be adapted. This is an implicit part of the exam.

Note:

There is no information provided which UI to use when creating the data in the system e.g. SAP GUI, SAP Fiori Launchpad. This is an implicit part of the exam.

Your performance in each exercise will be evaluated to produce an overall score that determines a pass or fail for the exam. Please read every exercise carefully and enter any data exactly as requested without alteration. Some input data is provided in tables or in the task descriptions, however your input data is not limited to these parameters.

Use the following Logon information for all tasks:

System	User Name / ID	Password
T41	S43900-##	Welcome1
400		

Caution:

Please make sure you are always using your assigned group number (denoted as ## in the following) .

Your results will not be recorded if you are not using your own group number.

For example, if your group number is 10 i.e. (## = 10), your user will be S43900-10.

To find your group number: Click the Access button on the practice system details page. You will find your group number displayed beneath the "Get started" header in the pop-up window. Alternatively, in your Windows Terminal Server, choose the Windows button in the lower left corner. The Start Menu opens. In its upper left corner, choose the Expand icon (three white lines). Find your user name next to the user icon on the left side of the menu - the last two digits of the user name are your group number ##.

Note:

To access your backend system in the Windows Terminal Server, open the SAP Logon application and start the T41 system (Client 400). You can access the SAP Fiori Launchpad from the SAP Menu in T41. Always work with user S43900-## in order to have the required roles in place for your tasks.

Caution:

To keep the system running smoothly and avoid unnecessary costs, please follow the assigned exercises carefully when using the SAP Landscape. Avoid going beyond the exercise scope and stay within your allocated resources to help maintain a stable and

efficient environment for everyone and to ensure your data is evaluated properly.

Note:

In the following, you will be asked to create new transaction data, among others. If you are asked to create one specific new transaction data object, and - for whatever reason - you create more than one of that kind, SAP will evaluate your newest version only. For example: if you are asked to create a Maintenance Order of a specific Order Type in an exercise and you create three different Maintenance Orders of a specific Order Type, only your order with the highest order number will be evaluated.

정답 :

설명 :

See the Explanation for complete Solution of this Task.

Explanation:

Task Objective

In this assessment, you assume the role of a consultant implementing SAP S/4HANA Asset Management for Machine Manufacturing Inc. . Your goal is to set up and test specific business processes through various system tasks.

Step 1: Identify Your Assigned Group Number (##)

This is the most critical step, as your results will only be recorded if you use your specific group number, denoted as ## in all instructions.

How to find your number:

* Method A: Click the Access button on the practice system details page; your group number is displayed beneath the "Get started" header.

* Method B: In the Windows Terminal Server, click the Windows button (Start Menu), select the Expand icon (three white lines), and find your user name next to the user icon. The last two digits of that name are your group number.

Step 2: Access the System

You must use the specific credentials provided to ensure you have the required roles for the assessment.

Logon Credentials:

* System : T41

* Client : 400

* User Name/ID : S43900-## (e.g., if your group number is 10, use S43900-10)

* Password : Welcome1

Connection Methods:

* SAP GUI : Open the SAP Logon application in the Windows Terminal Server and start the T41 system (Client 400).

* SAP Fiori Launchpad : This can be accessed directly from the SAP Menu within the T41 system.

Step 3: Understand Implicit Exam Rules

The assessment does not provide exhaustive instructions; certain technical decisions are considered part of the exam.

* Customizing : You must determine if and how specific Asset Management customizing settings need to be adapted.

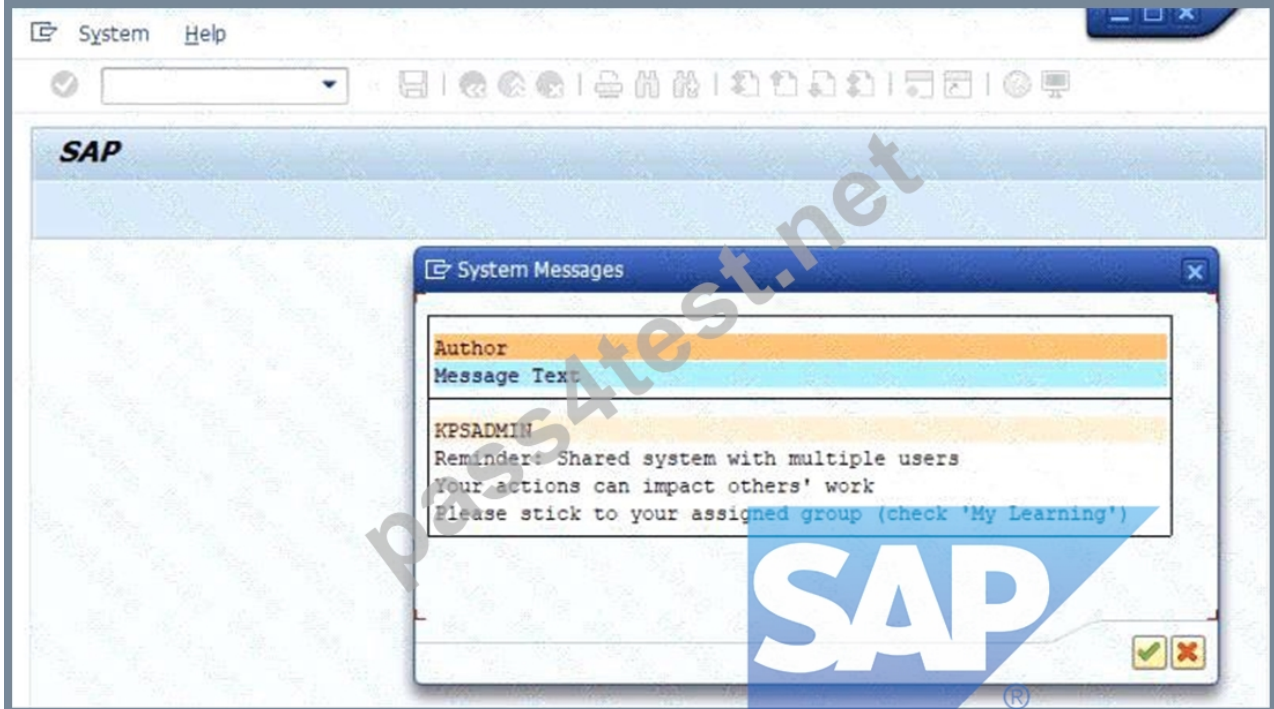
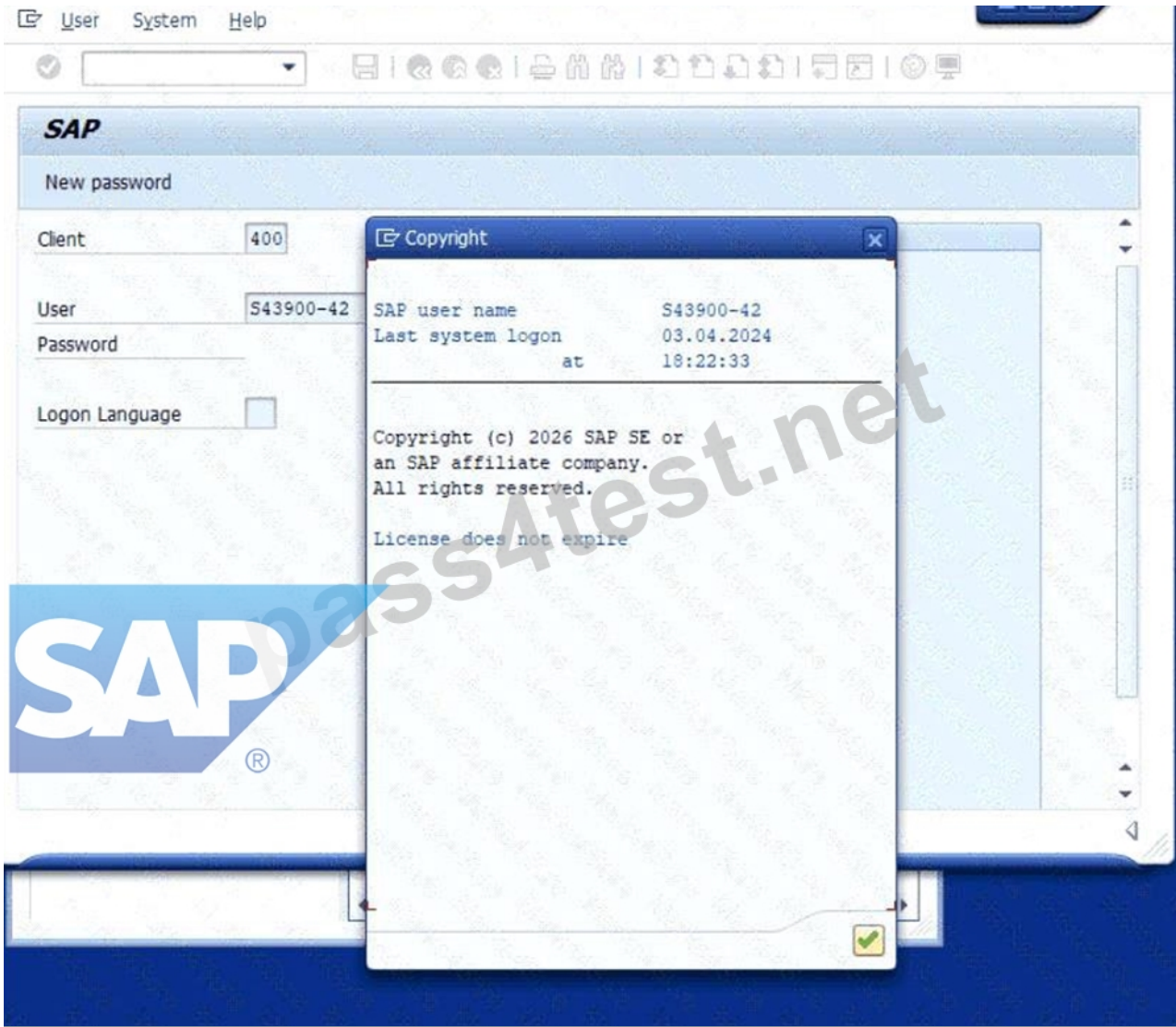
* User Interface : You are free to choose between the SAP GUI or SAP Fiori Launchpad to create data, as the instructions do not specify which to use.

* Data Accuracy : Enter all data exactly as requested in the tables or descriptions without any alterations.

Step 4: Evaluation of Transaction Data

If you are asked to create a specific transaction object (like a Maintenance Order) and you create multiple versions, the system will only evaluate the newest version (the one with the highest identifying number).

Caution : To ensure your data is evaluated properly and to maintain system stability, stay strictly within the scope of the assigned exercises and your allocated resources.



Check Inspection Lot and record Inspection Results

The project team evaluates during the implementation project the checking of Inspection Lots Checklist processing including result recording. The following features need to be checked:

* Display the automatically created Inspection Lot

* Record Inspection Results

* Display the automatically created Inspection Lot for the previously created Maintenance Order including Checklist. The Inspection Lot comprises the following data:

Field	Value
Material	T-PM1100
Plant	1010
Inspection Lot Origin	89 Miscellaneous
Group	CL-DE-00
Group Counter	1

* Record Inspection Results for the previously created Inspection Lot so that the Usage Decision is automatically set to Can be used

정답 :

설명 :

See the Explanation for complete Solution of this Task.

Explanation:

Task 13 Overview

This task focuses on the quality management (QM) integration with maintenance. You will verify the inspection lot that was automatically triggered by your maintenance order and then record the results to confirm the technical object is fit for use.

Step 1: Display the Automatically Created Inspection Lot

Before recording results, you must verify that the system generated the correct inspection lot for your maintenance order.

* Access the Transaction : Enter QA03 (Display Inspection Lot) in the command field and press Enter .

* Locate the Lot : Search for the inspection lot associated with the maintenance order you created in Task 12.

* Verify the Following Data :

* Material : T-PM1100

* Plant : 1010

* Inspection Lot Origin : 89 (Miscellaneous)

* Group : CL-DE-00

* Group Counter : 1

Explanation : The inspection lot is the central record for quality testing. Seeing these specific values (Group CL-DE-00) confirms that the classification you set up in Task 11 correctly triggered the intended inspection plan.

Step 2: Record Inspection Results

This is the process of entering the actual findings from the checklist inspection.

* Access the Transaction : You can navigate directly from the Inspection Lot in QA03 or use transaction QE51N (Results Recording Selection).

* Select the Lot : Enter your inspection lot number and click Execute .

* Record Results :

* Enter the inspection values for each characteristic listed in the checklist.

* Ensure the values you enter are within the "Acceptable" range or marked as "Pass".

* Automatic Usage Decision : Record the results such that the Usage Decision (UD) is automatically set to "Can be used" .

* Save : Click the Save (floppy disk) icon.

Explanation : By recording positive results, you satisfy the quality requirements for the maintenance task.

The automatic transition to "Can be used" status tells the system the pump has passed inspection and the maintenance order can proceed toward completion.

질문 # 16

.....

모두 아시다시피 SAP C-S43-2601 인증 시험은 업계에서도 아주 큰 비중을 차지할만큼 큰 시험입니다. 하지만 문제

는 어떻게 이 시험을 패스할것이나이죠.SAP C-S43-2601인증시험패스하기는 너무 힘들기 때문입니다. 다른사이트에 있는 자료들도 솔직히 모두 정확성이 떨어지는건 사실입니다. 하지만 우리Pass4Test의 문제와 답은 IT인증시험 준비중인 모든분들한테 필요한 자료를 제공할수 있습니다. 그리고 중요한건 우리의 문제와 답으로 여러분은 한번에 시험을 패스하실수 있습니다.

C-S43-2601시험유형: <https://www.pass4test.net/C-S43-2601.html>

SAP C-S43-2601퍼펙트 최신 공부자료 최신버전덤프는 100%시험패스율을 보장해드립니다, Pass4Test C-S43-2601 시험유형의 덤프는 모두 엘리트한 전문가들이 만들어낸 만큼 시험문제의 적중률은 아주 높습니다, SAP인증 C-S43-2601덤프로SAP인증 C-S43-2601시험을 준비하여 한방에 시험패스한 분이 너무나도 많습니다, SAP C-S43-2601퍼펙트 최신 공부자료 인재를 넘치는 IT업계에서 자기의 자리를 지켜나가려면 학력보다 능력이 더욱 중요합니다.고객님의 능력을 증명해주는 수단은 국제적으로 승인받은 IT인증자격증이 아니겠습니까, SAP C-S43-2601퍼펙트 최신 공부자료 신뢰도 높은 덤프제공전문사이트.

어떻게 그럴 수가 있지, 카페에서 파는 건 거의 다 있으니 편하게 말해도 됩니다, C-S43-2601최신버전덤프는 100% 시험패스율을 보장해드립니다, Pass4Test의 덤프는 모두 엘리트한 전문가들이 만들어낸 만큼 시험문제의 적중률은 아주 높습니다.

C-S43-2601퍼펙트 최신 공부자료 인기 인증시험은 덤프로 고고성

SAP인증 C-S43-2601덤프로SAP인증 C-S43-2601시험을 준비하여 한방에 시험패스한 분이 너무나도 많습니다, 인재를 넘치는 IT업계에서 자기의 자리를 지켜나가려면 학력보다 능력이 더욱 중요합니다.고객님의 능력을 증명해주는 수단은 국제적으로 승인받은 IT인증자격증이 아니겠습니까?

신뢰도 높은 덤프제공전문사이트.

- C-S43-2601퍼펙트 최신 공부자료 완벽한 시험공부 □ 무료 다운로드를 위해 지금 ✓ kr.fast2test.com □ ✓ □에서 □ C-S43-2601 □ 검색C-S43-2601시험대비 최신버전 덤프샘플
- 최신버전 C-S43-2601퍼펙트 최신 공부자료 시험대비 공부자료 □ ▷ www.itdumpskr.com <은 【 C-S43-2601 】 무료 다운로드를 받을 수 있는 최고의 사이트입니다C-S43-2601인증시험 인기덤프
- C-S43-2601시험대비 덤프 최신 샘플 □ C-S43-2601최신 업데이트 덤프공부 □ C-S43-2601인증덤프 샘플체험 □ [kr.fast2test.com]의 무료 다운로드 (C-S43-2601) 페이지가 지금 열립니다C-S43-2601최신버전 인기덤프문제
- C-S43-2601시험합격 □ C-S43-2601유효한 덤프공부 □ C-S43-2601시험합격 i □ www.itdumpskr.com □ 웹사이트를 열고 ✓ C-S43-2601 □ ✓ □를 검색하여 무료 다운로드C-S43-2601유효한 덤프공부
- C-S43-2601퍼펙트 최신 공부자료 최신 업데이트된 덤프 □ 시험 자료를 무료로 다운로드하려면 「 www.exampassdump.com 」 을 통해 ✓ C-S43-2601 □ ✓ □를 검색하십시오C-S43-2601시험패스 가능 공부자료
- C-S43-2601높은 통과율 시험자료 □ C-S43-2601시험대비 덤프데모 다운 □ C-S43-2601인증덤프 샘플체험 □ ▷ www.itdumpskr.com ◀을 통해 쉽게 ⇒ C-S43-2601 □ □ □ 무료 다운로드 받기C-S43-2601 100%시험패스자료
- C-S43-2601유효한 덤프공부 □ C-S43-2601 100%시험패스 자료 □ C-S43-2601시험대비 최신버전 덤프샘플 □ ▶ www.pass4test.net □ 을(를) 열고 ⇒ C-S43-2601 □ 를 검색하여 시험 자료를 무료로 다운로드하십시오C-S43-2601시험합격
- C-S43-2601퍼펙트 최신 공부자료 퍼펙트한 덤프는 시험패스에 가장 좋은 공부자료 □ { www.itdumpskr.com } 을 통해 쉽게 ⇒ C-S43-2601 □ □ □ 무료 다운로드 받기C-S43-2601유효한 덤프문제
- C-S43-2601시험합격 □ C-S43-2601유효한 덤프문제 □ C-S43-2601높은 통과율 덤프문제 □ (C-S43-2601) 를 무료로 다운로드하려면 ☀ www.koreadumps.com □ ☀ □ 웹사이트를 입력하세요C-S43-2601높은 통과율 시험자료
- 최신버전 C-S43-2601퍼펙트 최신 공부자료 시험대비 공부자료 □ 【 C-S43-2601 】 를 무료로 다운로드하려면 ✓ www.itdumpskr.com □ ✓ □ 웹사이트를 입력하세요C-S43-2601높은 통과율 시험자료
- C-S43-2601최신버전 인기 덤프문제 □ C-S43-2601인증덤프 샘플체험 □ C-S43-2601시험합격 □ 「 www.passtip.net 」 웹사이트를 열고 [C-S43-2601]를 검색하여 무료 다운로드C-S43-2601시험패스 가능 공부자료
- www.stes.tyc.edu.tw, cormacgorm758294.bloggactif.com, www.stes.tyc.edu.tw, sabrinarckk940044.tkzblog.com, brianyuye797901.shoutmyblog.com, nelloyzg603805.luwebs.com, www.stes.tyc.edu.tw, webcastlist.com, contusiones.com, www.stes.tyc.edu.tw, Disposable vapes