

AZ-801 Valid Test Questions | Study AZ-801 Tool



P.S. Free & New AZ-801 dumps are available on Google Drive shared by Dumpkiller: https://drive.google.com/open?id=1x_kduP0CXjG1tVM0LGXkfwWGkc-aAjYD

Are you staying up for the AZ-801 exam day and night? Do you have no free time to contact with your friends and families because of preparing for the exam? Are you tired of preparing for different kinds of exams? If your answer is yes, please buy our AZ-801 Exam Questions, which is equipped with a high quality. We can make sure that our AZ-801 study materials have the ability to help you solve your problem, and you will not be troubled by these questions above.

Microsoft AZ-801, also known as Configuring Windows Server Hybrid Advanced Services Exam, is a certification exam that assesses the abilities of IT professionals in configuring, managing, and securing Windows Server and hybrid environments. AZ-801 Exam is designed for individuals who have advanced knowledge and skills in managing Windows Server infrastructure and integrating on-premises environments with Microsoft Azure services.

Microsoft AZ-801 (Configuring Windows Server Hybrid Advanced Services) Certification Exam is a professional-level certification that is designed for IT professionals who have experience with Windows Server administration, hybrid and cloud solutions, identity management, and virtualization technologies. Configuring Windows Server Hybrid Advanced Services certification exam is part of the Microsoft Certified Azure Administrator Associate certification path and validates the candidate's expertise in configuring advanced services in a hybrid environment.

>> AZ-801 Valid Test Questions <<

Buy Microsoft AZ-801 Latest Dumps Today and Save Money with Free Updates

IT exam become more important than ever in today's highly competitive world, these things mean a different future. Microsoft AZ-801 exam will be a milestone in your career, and may dig into new opportunities, but how do you pass Microsoft AZ-801 Exam? Do not worry, help is at hand, with Dumpkiller you no longer need to be afraid. Dumpkiller Microsoft AZ-801 exam questions and answers is the pioneer in exam preparation.

The Microsoft AZ-801 Exam consists of various topics, such as configuring and managing hybrid identities, implementing and managing virtual networking, managing hybrid workloads, and securing hybrid environments. Candidates who pass the exam will be able to demonstrate their ability to design, implement, and manage complex Windows Server Hybrid solutions.

Microsoft Configuring Windows Server Hybrid Advanced Services Sample Questions (Q255-Q260):

NEW QUESTION # 255

You need to implement a security policy solution to authorize the applications. The solution must meet the security requirements. Which service should you use to enforce the security policy, and what should you use to manage the policy settings? To answer, select the appropriate options in the answer area.

NOTE: Each correct selection is worth one point.

Enforce the security policy:

Microsoft Defender Application Control
Microsoft Defender Application Guard
Microsoft Defender Credential Guard
Microsoft Defender for Endpoint

Manage the policy settings:

Configuration profiles in Microsoft Intune
Compliance policies in Microsoft Intune
Group Policy Objects (GPOs)

Answer:

Explanation:

Enforce the security policy:

Microsoft Defender Application Control
Microsoft Defender Application Guard
Microsoft Defender Credential Guard
Microsoft Defender for Endpoint

Manage the policy settings:

Configuration profiles in Microsoft Intune
Compliance policies in Microsoft Intune
Group Policy Objects (GPOs)

Explanation

Graphical user interface, text, application, chat or text message Description automatically generated

Enforce the security policy:

- Microsoft Defender Application Control
- Microsoft Defender Application Guard
- Microsoft Defender Credential Guard
- Microsoft Defender for Endpoint

Manage the policy settings:

- Configuration profiles in Microsoft Intune
- Compliance policies in Microsoft Intune
- Group Policy Objects (GPOs)

Reference:

<https://docs.microsoft.com/en-us/windows/security/threat-protection/windows-defender-application-control/wdac>

NEW QUESTION # 256

You have an Azure subscription that contains the virtual machines shown in the following table.

Name	Security type	Operating system
VM1	Standard	Windows Server 2025 Datacenter: Azure Edition
VM2	Standard	Windows Server 2025 Datacenter
VM3	Trusted launch	Windows Server 2025 Datacenter
VM4	Confidential	Windows Server 2025 Datacenter: Azure Edition

You plan to use Azure Site Recovery to replicate supported virtual machines to a secondary Azure region.

Which virtual machines can be replicated by using Azure Site Recovery?

- A. VM1 and VM2 only
- B. VM1 and VM4 only
- C. VM1, VM2, VM3, and VM4
- D. VM1, VM2, and VM4 only
- E. VM1 only

Answer: C

NEW QUESTION # 257

You have the servers shown in the following table.

Name	Operating system	Configuration	Install option
Server1	Windows Server 2012 R2	File server	Server Core
Server2	Windows Server 2022	File server	Server Core
Server3	Windows Server 2016	Domain controller	Server with Desktop Experience

You plan to migrate file shares from Server1 to Server2.

Storage Migration Service:

- Server1
- Server2
- Server3

Storage Migration Service extension:

- Server1
- Server2
- Server3

Answer:

Explanation:



Explanation

Server 2

Server 1

NEW QUESTION # 258

You have a failover cluster named FC1 that contains two nodes named Server1 and Server2. FC1 is configured to use a file share witness.

You plan to configure FC1 to use a cloud witness.

You need to configure Azure Storage accounts for the cloud witness.

Which storage account type and authorization method should you configure? To answer, select the appropriate options in the answer area.

NOTE: Each correct selection is worth one point.

Storage account type:	<div><div>Premium block blobs</div><div>Premium file shares</div><div>Premium page blobs</div><div>Standard</div></div>
Authentication method:	<div><div>Access key</div><div>Shared access signature (SAS)</div><div>System-assigned managed identity in Azure Active Directory (Azure AD)</div><div>User-assigned managed identity in Azure Active Directory (Azure AD)</div></div>

Answer:

Explanation:

Storage account type:

<div><div>Premium block blobs</div><div>Premium file shares</div><div>Premium page blobs</div><div>Standard</div></div>

Authentication method:

<div><div>Access key</div><div>Shared access signature (SAS)</div><div>System-assigned managed identity in Azure Active Directory (Azure AD)</div><div>User-assigned managed identity in Azure Active Directory (Azure AD)</div></div>
--

Reference:

<https://docs.microsoft.com/en-us/windows-server/failover-clustering/deploy-cloud-witness>

NEW QUESTION # 259

You are planning the migration of APP3 and APP4 to support the Azure migration plan.

What should you do on Cluster1 and in Azure before you perform the migration? To answer, select the appropriate options in the answer area.

NOTE: Each correct selection is worth one point.

On Cluster1:	<div>▼</div> <div>Configure Azure Network Adapter.</div> <div>Create a Point-to-Site (P2S) VPN connection to Vnet1.</div> <div>Import the Azure Migrate appliance.</div> <div>Install the Azure File Sync agent.</div> <div>Install the Windows Server Migration Tools.</div>
In Azure:	<div>▼</div> <div>Create a premium block blobs Azure Storage account.</div> <div>Create a private endpoint.</div> <div>Create a VPN gateway.</div> <div>Create an Azure Migrate project.</div>

Answer:

Explanation:

On Cluster1:	<div>▼</div> <div>Configure Azure Network Adapter.</div> <div>Create a Point-to-Site (P2S) VPN connection to Vnet1.</div> <div>Import the Azure Migrate appliance.</div> <div>Install the Azure File Sync agent.</div> <div>Install the Windows Server Migration Tools.</div>
In Azure:	<div>▼</div> <div>Create a premium block blobs Azure Storage account.</div> <div>Create a private endpoint.</div> <div>Create a VPN gateway.</div> <div>Create an Azure Migrate project.</div>

Reference:

<https://docs.microsoft.com/en-us/azure/migrate/tutorial-discover-hyper-v>

Topic 2, Contoso, Ltd

Overview

This is a case study. Case studies are not timed separately. You can use as much exam time as you would like to complete each case. However, there may be additional case studies and sections on this exam. You must manage your time to ensure that you are able to complete all questions included on this exam in the time provided.

To answer the questions included in a case study, you will need to reference information that is provided in the case study. Case studies might contain exhibits and other resources that provide more information about the scenario that is described in the case study. Each question is independent of the other questions in this case study.

At the end of this case study, a review screen will appear. This screen allows you to review your answers and to make changes before you move to the next section of the exam. After you begin a new section, you cannot return to this section.

To start the case study

To display the first question in this case study, click the Next button. Use the buttons in the left pane to explore the content of the case study before you answer the questions. Clicking these buttons displays information such as business requirements, existing environment, and problem statements. If the case study has an All Information tab, note that the information displayed is identical to the information displayed on the subsequent tabs. When you are ready to answer a question, click the Question button to return to the question.

Overview

Contoso, Ltd. is a manufacturing company that has a main office in Seattle and branch offices in Los Angeles and Montreal.

Existing Environment

Active Directory Environment

Contoso has an on-premises Active Directory Domain Services (AD DS) domain named contoso.com that syncs with an Azure Active Directory (Azure AD) tenant. The AD DS domain contains the domain controllers shown in the following table.

Name	Operating system	Operation master role
DC1	Windows Server 2012 R2	RID master, schema master
DC2	Windows Server 2016	PDC emulator, infrastructure master
DC3	Windows Server 2016	Domain naming master

Contoso recently purchased an Azure subscription.

The functional level of the forest is Windows Server 2012 R2. The functional level of the domain is Windows Server 2012. The forest has the Active Directory Recycle Bin enabled.

The contoso.com domain contains the users shown in the following table.

Name	Organizational unit (OU)/Container	Member of
User1	OU1	Group2, Group4
User2	Users	Group2
User3	OU1	Group3, Group4
Admin1	OU1	Domain Admins

The contoso.com domain has the Group Policy Objects (GPOs) shown in the following table.

Name	Minimum password length	Linked to
Default Domain Policy	8	contoso.com
GPO1	10	OU1

The contoso.com domain has the Password Settings Objects (PSOs) shown in the following table.

Name	Precedence	Minimum password length	Directly applies to
PSO1	10	9	Group2
PSO2	20	11	Group4

Server Infrastructure

The contoso.com domain contains servers that run Windows Server 2022 as shown in the following table.

Name	Description
Server1	Contains a share named Share1
Server2	None
Server3	None
Server4	Has Remote Desktop enabled

By using Windows Firewall with Advanced Security, the servers have isolation connection security rules configured as shown in the following table.

Name	Endpoint 1	Endpoint2	Authentication mode
Server1	Any	Any	Request inbound and outbound
Server2	Any	Any	Require inbound and request outbound
Server3	Any	Any	Require inbound and outbound
DC1	Any	Any	Request inbound and outbound
DC2	Any	Any	Request inbound and outbound
DC3	Any	Any	Request inbound and outbound

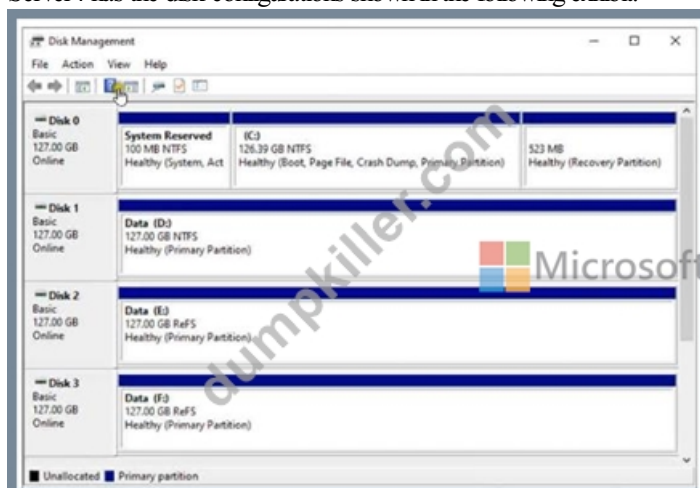
Server4 has no connection security rules.

Server4 Configurations

Server4 has the effective Group Policy settings for user rights as shown in the following table.

Policy	Security Setting
Access this computer from the network	Group1, Administrators, Backup Operators, Everyone, Users
Deny access to this computer from the network	Group4
Allow log on through Remote Desktop Services	Group2, Administrators, Remote Desktop Users
Deny log on through Remote Desktop Services	Group3

Server4 has the disk configurations shown in the following exhibit.



Virtualization Infrastructure

The contoso.com domain has the Hyper-V failover clusters shown in the following table.

Name	Number of nodes	Number of virtual machines
Cluster1	6	18
Cluster2	4	12
Cluster3	2	6

Technical Requirements

Contoso identifies the following technical requirements:

Promote a new server named DC4 that runs Windows Server 2022 to a domain controller.

Replicate the virtual machines from Cluster2 to an Azure Recovery Services vault.

Centrally manage performance alerts in Azure for all the domain controllers.

Ensure that User1 can recover objects from the Active Directory Recycle Bin.

Migrate Share1 to Server2, including all the share and folder permissions.

Back up Server4 and all data to an Azure Recovery Services vault.

Use Hyper-V Replica to protect the virtual machines in Cluster3.

Implement BitLocker Drive Encryption (BitLocker) on Server4.

Whenever possible, use the principle of least privilege.

NEW QUESTION # 260

.....

Study AZ-801 Tool: https://www.dumpkiller.com/AZ-801_braindumps.html

- Microsoft AZ-801 Valid Test Questions - Latest Updated Study AZ-801 Tool and Authorized Configuring Windows Server Hybrid Advanced Services Valid Exam Testking ☼ www.pass4test.com ☼ is best website to obtain ► AZ-801 ◄ for free download ☐ AZ-801 Reliable Exam Braindumps
- 100% Pass Microsoft - The Best AZ-801 - Configuring Windows Server Hybrid Advanced Services Valid Test Questions ☐ Download ► AZ-801 ◄ for free by simply entering 【 www.pdfvce.com 】 website ☐ AZ-801 Top Dumps
- Exam Dumps AZ-801 Zip ☐ Valid AZ-801 Test Vce ☐ AZ-801 Exam Topics Pdf ☐ Easily obtain free download of ► AZ-801 ◄ by searching on ☐ www.easy4engine.com ☐ ☐ AZ-801 Top Dumps
- Valid AZ-801 Test Vce ☐ Instant AZ-801 Discount ☐ AZ-801 Valid Exam Format ☐ Search for ► AZ-801 ☐ and obtain a free download on ⇒ www.pdfvce.com ⇐ ☐ Exam AZ-801 Cram
- Quick Tips to Pass your Exam with Microsoft AZ-801 Questions ☐ Search for { AZ-801 } on ► www.troytecdumps.com ☐☐☐ immediately to obtain a free download ☐ New AZ-801 Test Sims
- Latest AZ-801 Test Pdf ☐ Exam AZ-801 Cram ☐ AZ-801 New Braindumps Pdf ☐ Open 「 www.pdfvce.com 」 and search for ► AZ-801 ☐ to download exam materials for free ☐ Reliable AZ-801 Exam Price
- Latest AZ-801 Test Pdf ☐ AZ-801 Real Brain Dumps ☐ Instant AZ-801 Discount ☐ Open website 【 www.prepawayete.com 】 and search for 【 AZ-801 】 for free download ☐ Exam AZ-801 Vce
- 100% Pass 2026 Pass-Sure AZ-801: Configuring Windows Server Hybrid Advanced Services Valid Test Questions ☐ Copy URL 《 www.pdfvce.com 》 open and search for { AZ-801 } to download for free ☐ AZ-801 New Braindumps Pdf
- Microsoft AZ-801 Valid Test Questions - Latest Updated Study AZ-801 Tool and Authorized Configuring Windows Server Hybrid Advanced Services Valid Exam Testking ☐ 「 www.practicevce.com 」 is best website to obtain 【 AZ-801 】 for free download ☐ Exam Dumps AZ-801 Zip
- Quick Tips to Pass your Exam with Microsoft AZ-801 Questions ☐ Enter ☐ www.pdfvce.com ☐ and search for ☐ AZ-801 ☐ to download for free ☐ AZ-801 Valid Exam Format
- Microsoft AZ-801 PDF Dumps - Pass Your Exam In First Attempt [Updated-2026] ☐ Simply search for ☐ AZ-801 ☐ for free download on (www.torrentvce.com) ☐ Latest Test AZ-801 Simulations
- www.stes.tyc.edu.tw, www.stes.tyc.edu.tw, www.stes.tyc.edu.tw, www.stes.tyc.edu.tw, motionentrance.edu.np, www.stes.tyc.edu.tw, edu.globalfinix.in, www.stes.tyc.edu.tw, mbtc.yipeily.cn, kumu.io, Disposable vapes

2025 Latest Dumpkiller AZ-801 PDF Dumps and AZ-801 Exam Engine Free Share: https://drive.google.com/open?id=1x_kduP0CXjG1tVM0LGXkfwWGkc-aAjYD