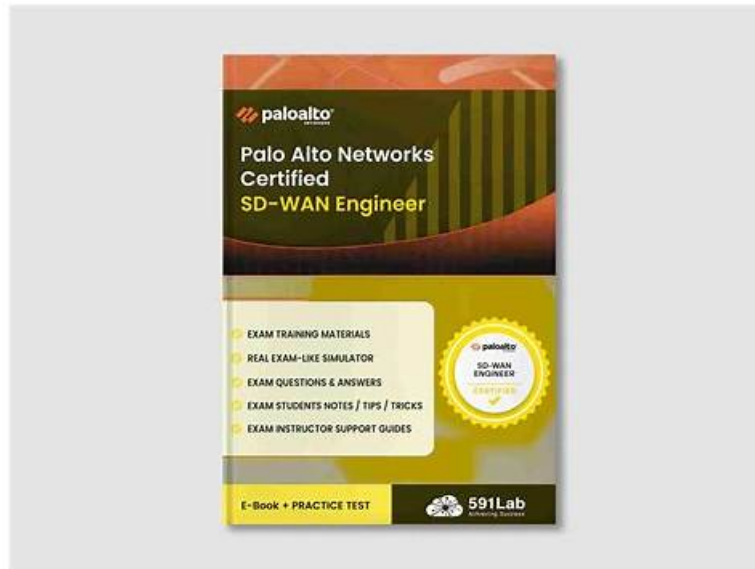


SD-WAN-Engineer exam study material & SD-WAN-Engineer exam training pdf & SD-WAN-Engineer latest practice questions



Dumpexams is a wonderful study platform that can transform your effective diligence in to your best rewards. By years of diligent work, our experts have collected the frequent-tested knowledge into our SD-WAN-Engineer exam materials for your reference. So our practice materials are triumph of their endeavor. By resorting to our SD-WAN-Engineer Exam Materials, we can absolutely reap more than you have imagined before. We have clear data collected from customers who chose our SD-WAN-Engineer practice materials, and the passing rate is 98-100 percent.

Palo Alto Networks SD-WAN-Engineer Exam Syllabus Topics:

Topic	Details
Topic 1	<ul style="list-style-type: none">• Troubleshooting: This domain focuses on resolving connectivity, routing, forwarding, application performance, and policy issues using co-pilot data analysis and analytics for network optimization and reporting.
Topic 2	<ul style="list-style-type: none">• Planning and Design: This domain covers SD-WAN planning fundamentals including device selection, bandwidth and licensing planning, network assessment, data center and branch configurations, security requirements, high availability, and policy design for path, security, QoS, performance, and NAT.
Topic 3	<ul style="list-style-type: none">• Deployment and Configuration: This domain focuses on Prisma SD-WAN deployment procedures, site-specific settings, configuration templates for different locations, routing protocol tuning, and VRF implementation for network segmentation.
Topic 4	<ul style="list-style-type: none">• Operations and Monitoring: This domain addresses monitoring device statistics, controller events, alerts, WAN Clarity reports, real-time network visibility tools, and SASE-related event management.
Topic 5	<ul style="list-style-type: none">• Unified SASE: This domain covers Prisma SD-WAN integration with Prisma Access, ADEM configuration, IoT connectivity via Device-ID, Cloud Identity Engine integration, and User• Group-based policy implementation.

>> SD-WAN-Engineer Actual Test <<

SD-WAN-Engineer Latest Exam Vce, Actual SD-WAN-Engineer Tests

Preparing for the Palo Alto Networks SD-WAN Engineer (SD-WAN-Engineer) certification test can be a difficult task for candidates. They often face several challenges during their preparation for the Palo Alto Networks SD-WAN Engineer (SD-WAN-Engineer) exam, including fear, lack of updated SD-WAN-Engineer Exam Dumps, and time constraints. Fortunately, there is a solution to these challenges. Dumpexams is a reliable website that provides genuine and updated SD-WAN-Engineer Practice Test.

Palo Alto Networks SD-WAN Engineer Sample Questions (Q39-Q44):

NEW QUESTION # 39

When using the CloudBlade to integrate Prisma SD-WAN with Prisma Access, how does the system ensure that the IPSec tunnels between the branch ION and the Prisma Access Security Processing Node (SPN) are kept alive during periods of no user traffic?

- A. Prisma Access initiates the connection to the branch every 60 seconds.
- **B. The IPSec tunnel uses standard DPD (Dead Peer Detection) and the ION sends keepalives.**
- C. The CloudBlade automatically configures the ION to send Synthetic Probes (ICMP/HTTP) across the tunnel.
- D. The administrator must configure a continuous ping script on a branch PC.

Answer: B

Explanation:

Comprehensive and Detailed Explanation

The stability of VPN tunnels in the Prisma SD-WAN + Prisma Access integration relies on standard IPSec mechanisms.

Dead Peer Detection (DPD): The CloudBlade configuration automatically enables DPD on the IPSec tunnels it provisions.

Mechanism: DPD is a standard keepalive mechanism where the ION device sends periodic "R-U-THERE" messages to the Prisma Access gateway (and vice versa). If no acknowledgment is received after a specific count/timer, the ION marks the tunnel as down and attempts to re-key or switch to a backup path.

Synthetic Probes (B): While Synthetic Probes (part of ADEM or Path Quality monitoring) can be configured to measure latency/loss, the fundamental mechanism that keeps the IPSec security association (SA) active and detects link failure is DPD, not an application-layer probe.

NEW QUESTION # 40

A network administrator notices that a branch ION device is experiencing high CPU utilization due to a suspected TCP SYN Flood attack originating from a compromised host on the local LAN.

Which specific security feature should be configured and applied to the "LAN" zone to mitigate this Denial of Service (DoS) attack?

- A. Zone-Based Firewall (ZBFW) Rule with a "Deny" action
- **B. Zone Protection Profile**
- C. Access Control List (ACL) on the WAN interface
- D. Application Quality Profile (AQP)

Answer: B

Explanation:

Comprehensive and Detailed Explanation

To defend against volumetric attacks such as TCP SYN Floods, UDP Floods, or ICMP Floods, Prisma SD-WAN (like PAN-OS) utilizes Zone Protection Profiles.

Function: A Zone Protection Profile is a specific security object designed to screen traffic for protocol anomalies and flood behaviors before it is processed by the complex firewall policy engine. It sets thresholds (e.g., "Max 1000 SYNs/sec"). If the traffic rate exceeds this threshold, the system triggers an action (Alarm, Drop, or SYN Cookies) to protect the device's resources.

Application: Unlike a standard ZBFW Rule (A) which filters based on Source/Destination/App-ID (which might still allow the initial handshake packets that cause the flood), a Zone Protection Profile is applied to the Zone object itself (in this case, the LAN Zone). This ensures that the flood is mitigated at the ingress stage, preventing the ION's session table and CPU from being exhausted by the attack.

NEW QUESTION # 41

An administrator needs to generate a monthly report showing the "Top Applications" by bandwidth usage across all branch sites to justify a bandwidth upgrade.

Which specific component of the Prisma SD-WAN interface is designed to create, schedule, and email these PDF summaries?

- A. Media Analytics
- B. Flow Browser
- **C. Reports**
- D. Activity Charts

Answer: C

Explanation:

Comprehensive and Detailed Explanation

Prisma SD-WAN separates real-time visibility from historical summarization.

Reports (C): The Reports section is the dedicated engine for generating historical summaries. Administrators can create custom report templates (e.g., "Monthly Executive Summary") that include specific widgets like "Top Applications by Volume," "Site Availability," or "Circuit Utilization." Crucially, this feature allows for Scheduling, where the system automatically generates the PDF report at a set interval (e.g., first day of the month) and emails it to a distribution list.

Activity Charts (A) / Media Analytics (B): These provide interactive, visual graphs for ad-hoc analysis but are not designed for generating downloadable, scheduled PDF summaries for management.

Flow Browser (D): This is for deep-dive troubleshooting of individual sessions, not for high-level aggregate reporting.

NEW QUESTION # 42

In a data center (DC) with two ION devices, all of the remote branch Prisma SD-WAN VPNs are active only on DC ION-1. Why are no VPNs active on DC ION-2?

- A. The ION device is behind a NAT.
- B. The static route to core as a next hop is missing.
- **C. The BGP core peer is down.**
- D. The DC and branches are in a different domain.

Answer: C

Explanation:

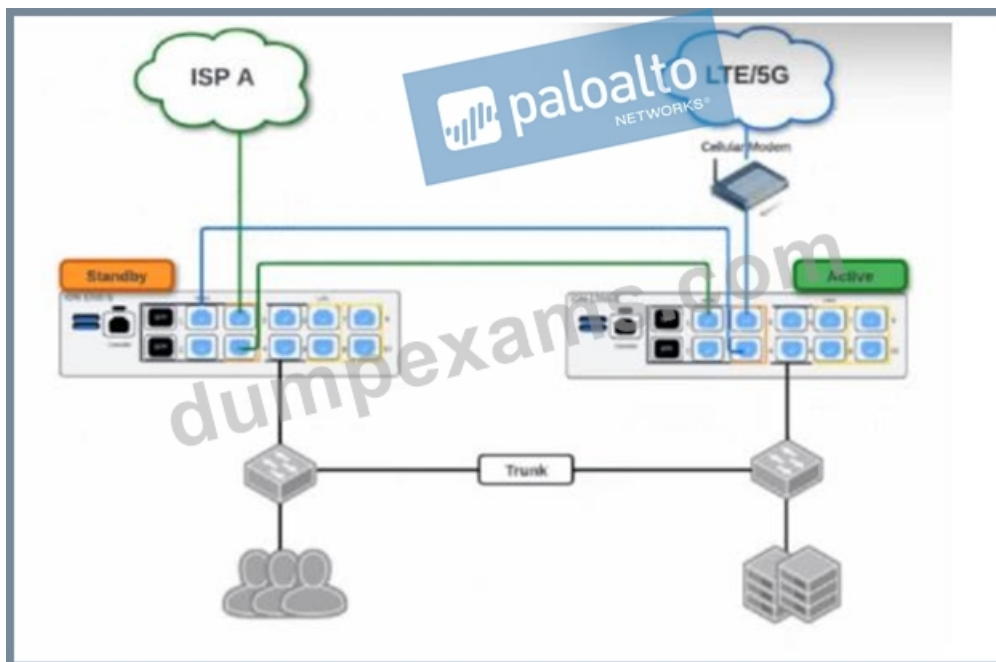
Comprehensive and Detailed Explanation

In a Prisma SD-WAN Data Center deployment, the operational state of the Secure Fabric VPNs (overlay tunnels) is directly tied to the health of the BGP Core Peer configuration.⁴ Core Peer Dependency: DC ION devices typically peer with the data center core switch (Core Router) via BGP to learn the subnets (prefixes) for the applications hosted in the DC. The Prisma SD-WAN controller monitors this BGP peering status.⁵ Controller Logic: If the BGP Core Peer on a DC ION goes down (or is not established), the controller automatically marks the VPN tunnels terminating at that specific ION as "Inactive".⁶ This is a fail-safe mechanism designed to prevent remote branches from sending traffic to a DC ION that has lost connectivity to the internal data center network (and thus the applications).

Scenario Analysis: In this scenario, DC ION-1 has active VPNs, meaning its BGP Core Peer is UP and it is successfully advertising reachability. DC ION-2 has no active VPNs, which strongly indicates that its BGP Core Peer is down.⁸ Because the controller sees the peer is down, it suppresses the tunnel establishment or marks existing tunnels as inactive to ensure traffic is only directed to the healthy node (ION-1).

NEW QUESTION # 43

Based on the HA topology image below, which two statements describe the end-state when power is removed from the ION 1200-S labeled "Active", assuming that the ION labeled "Standby" becomes the active ION? (Choose two.)



- A. The VRRP Virtual IP address assigned to any SVIs will be moved to the newly active ION.
- B. The connection to ISP A will be usable, but the connection to LTE/5G will not.
- C. The newly active ION will send a gratuitous ARP to the LAN for the IP address of any SVIs.
- D. Both the connection to ISP A and the connection to LTE/5G will be usable.

Answer: C,D

Explanation:

Comprehensive and Detailed Explanation at least 150 to 250 words each from Palo Alto Networks SD-WAN Engineer documents: Prisma SD-WAN High Availability (HA) for branch ION devices, particularly the Gen-2 ION 1200-S, is designed to provide "100% WAN Capacity" preservation during a hardware or power failure. This is achieved through the use of Bypass Pairs (Fail-to-Wire). In the provided topology, the ISP A and LTE/5G circuits are cross-connected using the bypass ports (typically ports 3 and 4 on the ION 1200-S).

When the "Active" ION device loses power, the internal physical relays in its bypass ports transition to a closed state, effectively creating a physical bridge between the ports. In this scenario, the LTE/5G signal—which enters the Active ION's port 4—is mechanically bridged to port 3, allowing it to pass through to port 4 of the Standby ION. Simultaneously, ISP A is already connected to the Standby ION. Consequently, once the Standby device completes its transition to the "Active" state, it has physical access to both WAN circuits, validating Statement A.

Regarding the LAN transition, Prisma SD-WAN does not use standard VRRP for ION-to-ION HA; instead, it uses a proprietary Control Plane HA mechanism. When the failover occurs, the newly active ION takes over the IP addresses of all configured Switch Virtual Interfaces (SVIs) and LAN interfaces. To ensure the downstream Layer 2 infrastructure (like the LAN switches shown in the diagram) updates its MAC address tables to point to the new physical hardware for those IPs, the newly active ION immediately broadcasts a Gratuitous ARP (GARP). This ensures that LAN traffic is correctly steered to the new device without a significant timeout, validating Statement C.

NEW QUESTION # 44

.....

Our Palo Alto Networks SD-WAN-Engineer exam dumps PDF can help you prepare casually and pass exam easily. If you make the best use of your time and obtain a useful certification you may get a senior position ahead of others. Chance favors the prepared mind. Dumpexams provide the best Palo Alto Networks SD-WAN-Engineer Exam Dumps Pdf materials in this field which is helpful for you.

SD-WAN-Engineer Latest Exam Vce: <https://www.dumpexams.com/SD-WAN-Engineer-real-answers.html>

- Reliable SD-WAN-Engineer Exam Prep ☐ SD-WAN-Engineer Test Preparation ☐ Reliable SD-WAN-Engineer Exam Prep * Simply search for ☐ SD-WAN-Engineer ☐ for free download on ➡ www.pass4test.com ☐ ☐ ☐ SD-WAN-Engineer Free Updates
- SD-WAN-Engineer Exam Simulator ☐ SD-WAN-Engineer Test Preparation ☐ SD-WAN-Engineer Exams Torrent

- ➡ Search for ➤ SD-WAN-Engineer on ➤ www.pdfvce.com ◀ immediately to obtain a free download SD-WAN-Engineer Free Updates
- SD-WAN-Engineer Reliable Exam Camp SD-WAN-Engineer Exam Question Reliable SD-WAN-Engineer Dumps Sheet Search on ⇒ www.examcollectionpass.com ⇐ for « SD-WAN-Engineer » to obtain exam materials for free download SD-WAN-Engineer Test Preparation
- Exclusive SD-WAN-Engineer Exam Questions And SD-WAN-Engineer Dumps For The 2026 Exam Search for ➡ SD-WAN-Engineer on “ www.pdfvce.com ” immediately to obtain a free download Exam SD-WAN-Engineer Review
- 100% Pass 2026 SD-WAN-Engineer Actual Test - Realistic Palo Alto Networks SD-WAN Engineer Latest Exam Vce Open ➤ www.practicevce.com ◀ and search for [SD-WAN-Engineer] to download exam materials for free Exam SD-WAN-Engineer Review
- 100% Pass Palo Alto Networks - Authoritative SD-WAN-Engineer - Palo Alto Networks SD-WAN Engineer Actual Test Immediately open SD-WAN-Engineer on www.pdfvce.com and search for ➡ SD-WAN-Engineer to obtain a free download SD-WAN-Engineer Reliable Exam Camp
- 100% Pass Palo Alto Networks - Authoritative SD-WAN-Engineer - Palo Alto Networks SD-WAN Engineer Actual Test Easily obtain free download of SD-WAN-Engineer by searching on ➤ www.exam4labs.com ◀ SD-WAN-Engineer Test Preparation
- Trustworthy SD-WAN-Engineer Dumps SD-WAN-Engineer Test Preparation SD-WAN-Engineer Reliable Test Cost Easily obtain { SD-WAN-Engineer } for free download through (www.pdfvce.com) SD-WAN-Engineer Exam Simulator
- SD-WAN-Engineer Actual Test | 100% Free SD-WAN-Engineer Latest Exam Vce Download [SD-WAN-Engineer] for free by simply entering ➡ www.prepawaypdf.com website SD-WAN-Engineer Reliable Test Cost
- Quiz 2026 Palo Alto Networks Professional SD-WAN-Engineer Actual Test Easily obtain free download of SD-WAN-Engineer by searching on ➡ www.pdfvce.com SD-WAN-Engineer Reliable Exam Preparation
- SD-WAN-Engineer Exam Simulator Trustworthy SD-WAN-Engineer Dumps SD-WAN-Engineer Latest Braindumps Sheet Search for ➡ SD-WAN-Engineer and obtain a free download on ➤ www.prepawaypdf.com ◀ Valid SD-WAN-Engineer Test Forum
- www.stes.tyc.edu.tw, myportal.utt.edu.tt, myportal.utt.edu.tt, myportal.utt.edu.tt, myportal.utt.edu.tt, myportal.utt.edu.tt, myportal.utt.edu.tt, myportal.utt.edu.tt, www.slideshare.net, www.stes.tyc.edu.tw, bbs.t-firefly.com, www.kala.co.ke, marciealfredo.blogspot.com, myportal.utt.edu.tt, myportal.utt.edu.tt, myportal.utt.edu.tt, myportal.utt.edu.tt, myportal.utt.edu.tt, myportal.utt.edu.tt, myportal.utt.edu.tt, www.notebook.ai, cocoasr18.blogspot.com, Disposable vapes