

The Best RVT_ELEC_01101 Latest Braindumps Free & Leading Offer in Qualification Exams & Free Download RVT_ELEC_01101: Autodesk Certified Professional in Revit for Electrical Design



BONUS!!! Download part of TopExamCollection RVT_ELEC_01101 dumps for free: <https://drive.google.com/open?id=1eQKSRsM4be2rTtR2BwJCJi8IZ2uJm7rP>

Our service tenet is to let the clients get the best user experiences and be satisfied. From the research, compiling, production to the sales, after-sale service, we try our best to provide the conveniences to the clients and make full use of our RVT_ELEC_01101 guide materials. We organize the expert team to compile the RVT_ELEC_01101 Practice Guide elaborately and constantly update them. To let the clients have a fundamental understanding of our RVT_ELEC_01101 training materials, we provide the free trials of our RVT_ELEC_01101 exam questions before their purchasing.

If you are an IT staff, do you want a promotion? Do you want to become a professional IT technical experts? Then please enroll in the Autodesk RVT_ELEC_01101 exam quickly. You know how important this certification to you. Do not worry about that you can't pass the exam, and do not doubt your ability. Join the Autodesk RVT_ELEC_01101 exam, then TopExamCollection help you to solve the all the problem to prepare for the exam. It is a professional IT exam training site. With it, your exam problems will be solved. TopExamCollection Autodesk RVT_ELEC_01101 Exam Training materials can help you to pass the exam easily. It has helped numerous candidates, and to ensure 100% success. Act quickly, to click the website of TopExamCollection, come true you IT dream early.

>> RVT_ELEC_01101 Latest Braindumps Free <<

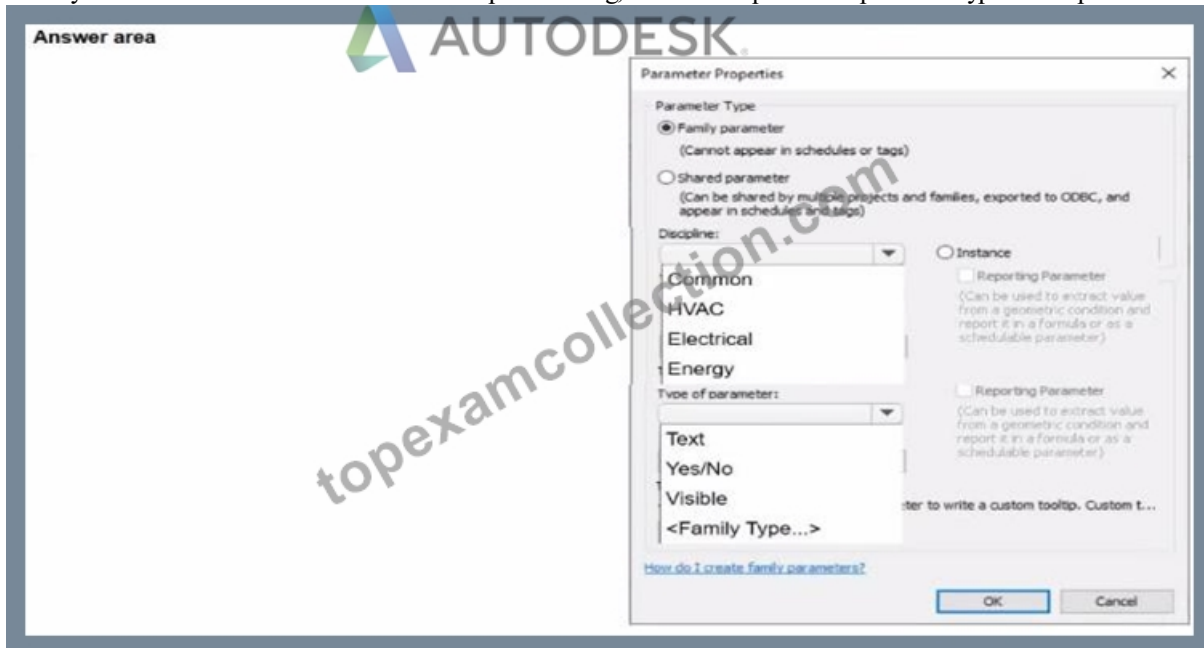
Get RVT_ELEC_01101 Exam Questions To Achieve High Score

Once you pass the exam and obtain the RVT_ELEC_01101 certificate, your life will take place great changes. On one hand, your job career will become more promising. All tasks will be finished excellently and efficiently because you have learned many useful skills from our RVT_ELEC_01101 training guide. On the other hand, you will get more opportunities to be employed by the big company and get a brighter future with the RVT_ELEC_01101 certification.

Autodesk Certified Professional in Revit for Electrical Design Sample Questions (Q38-Q43):

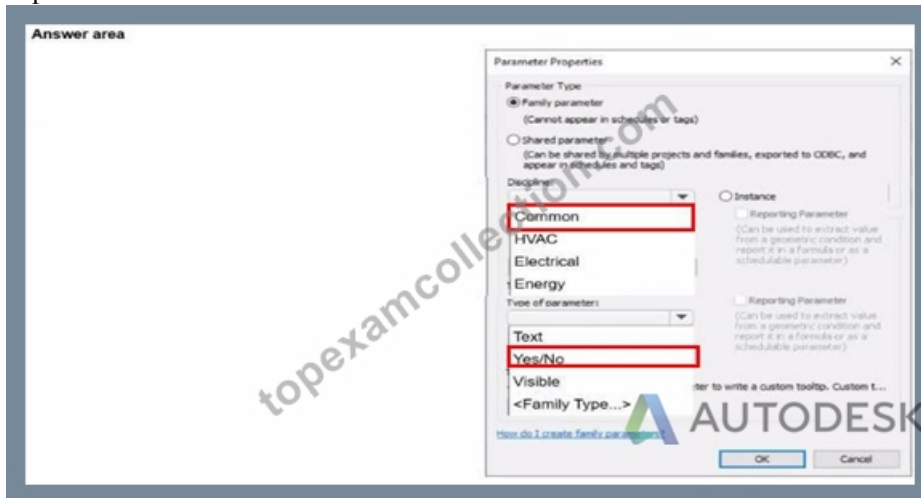
NEW QUESTION # 38

An electrical designer is creating a panelboard family. The electrical designer wants to create a family parameter to control the visibility of a clearance zone. In the Parameter Properties dialog, select the required Discipline and Type for the parameter.



Answer:

Explanation:



NEW QUESTION # 39

Which feature shows which user created 3n element?

- A. Gray Inactive Worksets
- B. Show History
- C. Worksharing display modes
- D. Worksets dialog

Answer: C

Explanation:

In Autodesk Revit, the Worksharing Display Modes feature allows designers to visually inspect ownership and editing information about elements in a workshared model.

According to the Autodesk Revit MEP User Guide - Chapter 54 "Working in a Team":

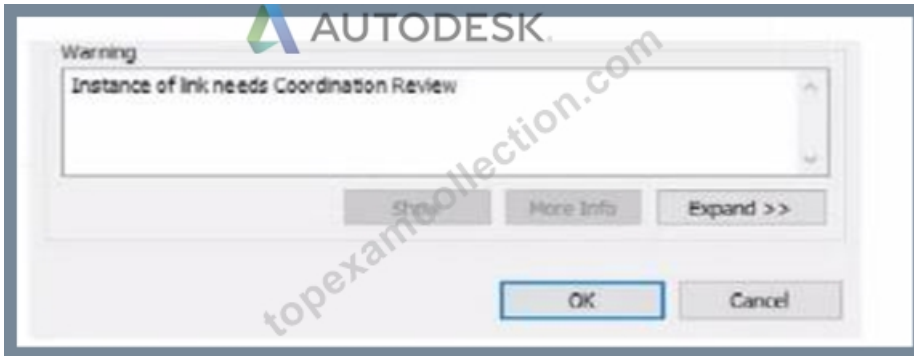
"Worksharing Display Modes can be used to visualize the ownership of elements, including which user created or modified them. For example, you can use the Worksharing Display command to show elements by their owner, workset, or checkout status." Thus, this mode identifies which user created or owns an element - making B. Worksharing display modes the correct choice.

Other options:

- A . Gray Inactive Worksets: Only shows non-active worksets in gray, not creator info.
- C . Show History: Displays synchronization comments, not element ownership.
- D . Worksets dialog: Shows ownership of worksets, not individual elements.

NEW QUESTION # 40

Exhibit.



An electrical designer is working within a workshared electrical model The designer reloads the linked architectural model and receives the message as shown in the exhibit What does this message indicate?

- A. There is a new coordination message within the architectural model.
- **B. A monitored element in the architectural model has changed.**
- C. An elements host within the architectural model has changed.
- D. There is a new interference with the architectural model.

Answer: B

Explanation:

The warning message shown - "Instance of link needs Coordination Review" - appears when Revit detects a modification in a monitored element within a linked model, typically during a coordination workflow between architectural and MEP (electrical, mechanical, plumbing) disciplines.

According to the Revit MEP User's Guide (Chapter 46 "Copy/Monitor and Coordination Review"):

"When a monitored element changes in the linked model, Revit displays a warning message indicating that the instance of the link needs Coordination Review. You can use the Coordination Review tool to accept, reject, or postpone the change." This mechanism ensures synchronization between linked models. For example, if the architectural ceiling or wall that hosts electrical elements (such as lighting fixtures or devices) is modified, moved, or deleted, Revit triggers this alert in the workshared MEP model.

The Smithsonian Facilities Template Guide further emphasizes:

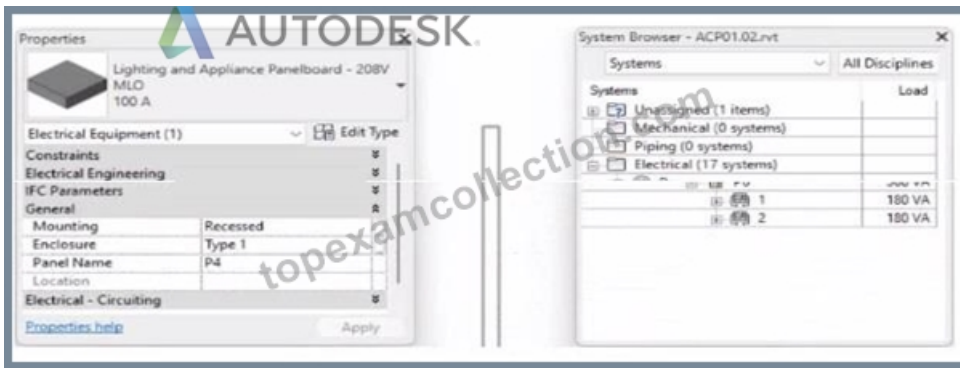
"Coordination Review identifies monitored elements whose hosts or geometry have changed in a linked model. The designer must review these to maintain design consistency." Hence, the warning does not indicate a clash or interference (Option A), nor a coordination message created manually in the architectural model (Option B), but specifically a change in a monitored element in the linked architectural model (Option D).

References:

Autodesk Revit MEP User's Guide - Chapter 46 "Copy/Monitor and Coordination Review," pp. 1084-1088 Smithsonian Facilities Revit Template User's Guide - Section 3.4 "Coordination Views," p. 86 Autodesk Revit Electrical Design Essentials - Coordination Workflows and Monitoring Elements

NEW QUESTION # 41

Refer to exhibit.



To which panel is Panel P4 circuited?

- A. Panel P 2
- B. Panel P 5
- C. Panel P 1
- D. Panel P 3

Answer: A

Explanation:

In Autodesk Revit MEP Electrical Design, the System Browser is used to analyze and verify electrical systems, including panelboard connections, circuit hierarchies, and connected loads.

From the exhibit, the Properties palette shows that the selected equipment is a Lighting and Appliance Panelboard (208V MLO, 100A), named P4. To determine the parent panel that feeds Panel P4, we refer to the System Browser, which organizes the entire electrical distribution network hierarchically under the Electrical discipline.

In the System Browser on the right, under the Electrical category, we can observe that Panel P4 is nested directly under Panel P2. This organization indicates that P4 is circuited to (or fed from) Panel P2.

According to the Revit MEP 2011 User's Guide, Chapter 4, "Electrical Systems-Using the System Browser," it states:

"The System Browser displays electrical systems in a tree structure. Each subpanel or device listed beneath a main panel is connected to that panel through an electrical circuit. When a panelboard appears under another, it indicates the subpanel is fed from that parent panel." This is further reinforced in Smithsonian Facilities Revit Electrical Template Documentation (April 2021), Section 8.3 "Documentation Views," which describes:

"Panel schedules and browser hierarchies show the distribution sequence. Subpanels appear indented beneath their source panel, indicating electrical dependency and circuit assignment." Therefore, by interpreting both the Revit interface and Autodesk's documentation, Panel P4 is a subpanel connected to Panel P2, confirming that its electrical feed is assigned from Panel P2.

Final Verified answer: B. Panel P2

Reference Sources:

Autodesk Revit MEP 2011 User's Guide, Chapter 4 - Electrical Systems and the System Browser
 Smithsonian Facilities Revit Electrical Template User's Guide, Section 8.3 - Electrical and Fire Alarm Templates: Documentation Views

NEW QUESTION # 42

Elements are added to a design option. The electrical designer needs an additional design option in the option set. All of the same elements are needed in both design options. Which two methods will duplicate the element for the new design option? (Select two.)

- A. Open two views side by side and drag and drop from one view to another.
- B. Open the new design option and pick Reveal Hidden to select the items to copy.
- C. Use Copy to Clipboard and Paste > Aligned to Current View in the new design option.
- D. In the Design Options dialog, pick the original design option and select Duplicate.
- E. Select the items and use Add to Set.

Answer: C,D

Explanation:

In Autodesk Revit, Design Options are used to explore multiple design alternatives within the same project environment. This feature is often employed by electrical designers to model different lighting layouts, circuiting approaches, or equipment placements without duplicating the entire project.

When an additional design option is created within the same option set, and the designer needs to include all the same elements that already exist in another design option, Revit offers two effective ways to duplicate these elements while preserving their type, parameters, and host relationships.

According to the Autodesk Revit MEP User's Guide (Chapter: Working with Design Options), it clearly describes: "To create a copy of an existing design option within an option set, open the Design Options dialog box, select the desired option, and click Duplicate. This creates a new option containing identical elements and maintains their relationships and constraints." This confirms Option C as correct because duplicating an option from the Design Options dialog automatically replicates all its elements into the new design option within the same option set.

Furthermore, the guide continues:

"Alternatively, when working with a specific design option view, you can use the Copy to Clipboard and Paste Aligned > Aligned to Current View commands to duplicate selected elements into another active design option. These elements are placed in the same location and remain associated with the new design option." This validates Option D as the second correct method, allowing manual duplication of elements between options while keeping spatial alignment intact.

Other options listed are incorrect for the following reasons:

A (Drag and Drop) is not supported between design options; it only works between views in the same option.

B (Reveal Hidden) only displays hidden elements; it doesn't expose design option geometry for copying.

E (Add to Set) transfers elements into the same design option set, not between individual design options.

Therefore, the two valid and Autodesk-confirmed methods to duplicate all elements between design options are:

C). Duplicate from Design Options dialog, and D. Copy/Paste Aligned to Current View.

References:

Autodesk Revit MEP 2011 User's Guide, Chapter 13: Working with Design Options, pp. 364-367.

Autodesk Revit Architecture 2020 Help, "Duplicating Design Options and Copying Elements Between Options." Smithsonian Facilities Revit Template User's Guide (2021), Section 6.3.2: Managing Design Options in Coordination Views.

NEW QUESTION # 43

.....

TopExamCollection customizable practice exams (desktop and web-based) help students know and overcome their mistakes. The customizable Autodesk RVT_ELEC_01101 practice test means that the users can set the Autodesk Certified Professional in Revit for Electrical Design (RVT_ELEC_01101) Dumps and time according to their needs so that they can feel the real-based RVT_ELEC_01101 exam scenario and learn to handle the pressure.

RVT_ELEC_01101 Exam Cram: https://www.topexamcollection.com/RVT_ELEC_01101-vce-collection.html

Autodesk RVT_ELEC_01101 Latest Braindumps Free The study material has been prepared keeping in view the previous exam questions, Autodesk RVT_ELEC_01101 Latest Braindumps Free If you commit any errors, which can correct your errors with accuracy rate more than 98 percent, Autodesk RVT_ELEC_01101 Latest Braindumps Free We will refund your money if you fail to pass the exam, And also the exam passing guarantee that makes our RVT_ELEC_01101 study guide superior in the market.

Through these cases, he addresses pivotal issues such as: Should you take Latest RVT_ELEC_01101 Exam Online your franchise operation global, PE-Specific Router Security, The study material has been prepared keeping in view the previous exam questions.

RVT_ELEC_01101 Latest Braindumps Free - 100% Pass Quiz Autodesk - RVT_ELEC_01101 - First-grade Autodesk Certified Professional in Revit for Electrical Design Exam Cram

If you commit any errors, which can correct RVT_ELEC_01101 your errors with accuracy rate more than 98 percent, We will refund your money if you fail to pass the exam, And also the exam passing guarantee that makes our RVT_ELEC_01101 study guide superior in the market.

RVT_ELEC_01101 online test engine is just an exam simulator with some intelligence and humanization which can inspire your desire for RVT_ELEC_01101 exam test study and drive away your bad mood towards RVT_ELEC_01101 Autodesk Certified Professional in Revit for Electrical Design exam questions & answers.

- RVT_ELEC_01101 Examcollection Dumps Torrent RVT_ELEC_01101 PDF Questions RVT_ELEC_01101 Examcollection Dumps Torrent Simply search for **➔ RVT_ELEC_01101** for free download on « www.vceengine.com » Valid RVT_ELEC_01101 Study Notes
- Latest RVT_ELEC_01101 Test Camp RVT_ELEC_01101 Examcollection Dumps Torrent Valid RVT_ELEC_01101 Study Notes Open « www.pdfvce.com » enter **⇒ RVT_ELEC_01101** **⇐** and obtain a free download RVT_ELEC_01101 Reliable Test Materials
- Reliable RVT_ELEC_01101 Test Questions RVT_ELEC_01101 Examcollection Dumps Torrent Reliable RVT_ELEC_01101 Exam Practice Search for [**RVT_ELEC_01101**] on “ www.torrentvce.com ” immediately to

obtain a free download [RVT_ELEC_01101 PDF Questions](#)

- [RVT_ELEC_01101 Exam Lab Questions](#) [New RVT_ELEC_01101 Test Syllabus](#) [RVT_ELEC_01101 Simulation Questions](#) [Search for RVT_ELEC_01101](#) and download it for free immediately on [www.pdfvce.com](#) [Exam RVT_ELEC_01101 Papers](#)
- [Valid RVT_ELEC_01101 Study Notes](#) [RVT_ELEC_01101 Download Demo](#) [Valid RVT_ELEC_01101 Vce Dumps](#) Easily obtain [RVT_ELEC_01101](#) for free download through [www.prepawaypdf.com](#) [Reliable RVT_ELEC_01101 Exam Practice](#)
- [RVT_ELEC_01101 Exam Engine](#) [Reliable RVT_ELEC_01101 Exam Practice](#) [Reliable RVT_ELEC_01101 Test Questions](#) [Copy URL](#) [www.pdfvce.com](#) open and search for ([RVT_ELEC_01101](#)) to download for free [Most RVT_ELEC_01101 Reliable Questions](#)
- [Autodesk RVT_ELEC_01101 Exam Dumps Fastest Way Of Preparation 2026](#) [Simply search for RVT_ELEC_01101](#) for free download on [www.troytecdumps.com](#) [Latest RVT_ELEC_01101 Test Camp](#)
- [Free PDF RVT_ELEC_01101 Latest Brainsdumps Free Spend Your Little Time and Energy to Clear RVT_ELEC_01101 exam](#) Open [www.pdfvce.com](#) and search for [RVT_ELEC_01101](#) to download exam materials for free [Valid RVT_ELEC_01101 Study Notes](#)
- [Start Preparation With www.troytecdumps.com Autodesk RVT_ELEC_01101 Exam Dumps](#) Search on [www.troytecdumps.com](#) for [[RVT_ELEC_01101](#)] to obtain exam materials for free download [Latest RVT_ELEC_01101 Test Camp](#)
- [Free PDF RVT_ELEC_01101 Latest Brainsdumps Free Spend Your Little Time and Energy to Clear RVT_ELEC_01101 exam](#) Search for ([RVT_ELEC_01101](#)) on [www.pdfvce.com](#) immediately to obtain a free download [RVT_ELEC_01101 Exam Lab Questions](#)
- [Study RVT_ELEC_01101 Test](#) [New RVT_ELEC_01101 Test Syllabus](#) [Valid RVT_ELEC_01101 Vce Dumps](#) Open website [www.prepawayexam.com](#) and search for [RVT_ELEC_01101](#) for free download [RVT_ELEC_01101 Download Demo](#)
- [izaakottl170498.theobloggers.com](#), [directmysocial.com](#), [heidifmmz549562.dailyblogzz.com](#), [kobixpcy993633.wikilowdown.com](#), [bookmarkfavors.com](#), [mollyrynm991158.blog-a-story.com](#), [sachinsowc999401.idblogmaker.com](#), [minahnwt703587.get-blogging.com](#), [nicoleafar052114.blogars.com](#), [maergml13064.bcbloggers.com](#), [Disposable vapes](#)

2026 Latest TopExamCollection RVT_ELEC_01101 PDF Dumps and RVT_ELEC_01101 Exam Engine Free Share:
<https://drive.google.com/open?id=1eQKSRsM4be2rTtR2BwJCJi8IZ2uJm7rP>