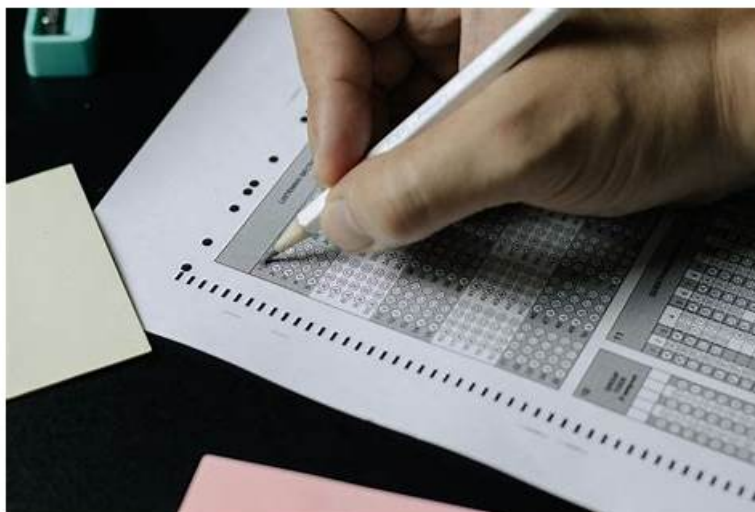


JN0-253 Reliable Exam Pattern | JN0-253 Exam Fees



What's more, part of that Exams-boost JN0-253 dumps now are free: https://drive.google.com/open?id=1Vq6lh8HkzGMz8RNIEg8p_rrcKRSK5Fxr

Do you want to have JN0-253 exam training materials which can save you time and effort? Then you can choose Exams-boost. Our JN0-253 exam training materials will provide you with free update service as long as one year. You will get the latest updated JN0-253 Exam Training materials. We guarantee that after you purchase our JN0-253 exam dumps, if you fail the JN0-253 exam certification, we will give a full refund.

Juniper JN0-253 Exam Syllabus Topics:

| Topic | Details |
|---------|---|
| Topic 1 | <ul style="list-style-type: none">Juniper Mist Configuration Basics: This domain addresses initial setup including user accounts, device onboarding, organizational structures, subscription licensing, certificate management, and automated provisioning with labels and policies. |
| Topic 2 | <ul style="list-style-type: none">Marvis Virtual Network Assistant AI: This domain introduces Marvis, an AI-powered assistant providing automated troubleshooting through intelligent actions, natural language queries, and specialized analytical tools for proactive issue resolution. |
| Topic 3 | <ul style="list-style-type: none">Location-based Services: This domain presents virtual Bluetooth Low Energy capabilities for asset tracking, visibility, and location-aware experiences that extend networking into physical space management. |
| Topic 4 | <ul style="list-style-type: none">Juniper Mist Monitoring and Analytics: This domain focuses on monitoring tools including service-level expectations, packet captures, AI-driven insights, automated alerts, and audit logs for comprehensive network visibility. |

>> JN0-253 Reliable Exam Pattern <<

JN0-253 exam dumps & JN0-253 torrent pdf & JN0-253 training guide

The aspirants will find it easy to get satisfied by our Juniper JN0-253 dumps material before actually buying it. If you wish to excel in Information Technology, the Juniper JN0-253 Certification will be a turning point in your career. Always remember that Mist AI, Associate (JNCIA-MistAI) JN0-253 exam questions change.

Juniper Mist AI, Associate (JNCIA-MistAI) Sample Questions (Q41-Q46):

NEW QUESTION # 41

Exhibit:

Referring to the exhibit, how many sites have unused Marvis for Wireless subscriptions?

- A. 0
- B. 1
- C. 2
- **D. 3**

Answer: D

Explanation:

In the Juniper Mist Cloud, the Subscriptions page provides administrators with detailed information about the status of service licenses and subscriptions associated with devices, sites, and organizations. This includes visibility into the number of active devices, sites, and any unused subscriptions across the organization.

According to the Juniper Mist Cloud Licensing and Subscription Management Guide, the "Sites" section under Subscriptions

Summary shows:

"The total number of configured sites within the organization and the number of sites that currently do not have assigned subscriptions." In the exhibit, the summary shows:

* 82 Sites total

* 15 Unused sites

This indicates that 15 sites currently have no active or assigned Marvis for Wireless subscriptions. The

"Unused" label under Sites refers specifically to the count of sites not yet utilizing their allocated subscription entitlements.

Therefore, the correct answer is B. 15.

References:- Juniper Mist Cloud Licensing and Subscription Management Guide- Juniper Mist Cloud Administration and Operations Documentation- Juniper Mist AI Service Subscription Overview

NEW QUESTION # 42

What are two solutions that Juniper Mist Location Services provide? (Choose two.)

- A. geofencing
- B. GPS location
- **C. wayfinding**
- **D. asset location**

Answer: C,D

Explanation:

Juniper Mist Location Services provide asset location and wayfinding. According to official Juniper documentation: "Juniper Mist provides location accuracy for wayfinding, asset visibility, and user engagement," leveraging cloud-native vBLE and Wi-Fi technologies.

* Asset location enables organizations to locate high-value resources, personnel, or IoT devices in real time with rich analytics, making it easy to find assets and people using the Mist dashboard and APIs.

* Wayfinding gives users turn-by-turn indoor navigation and mapping via mobile SDKs and the Mist cloud. While geofencing can be achieved as part of location-based engagement features, it is not listed as a primary Mist Location Service solution. GPS location is not directly supported; Mist Location Services operate indoors using Wi-Fi and BLE signals, not satellite GPS.

Reference: Juniper Mist Location Services Overview, Indoor Location Services Solution Brief.

NEW QUESTION # 43

What does the Predictive Analytics and Correlation Engine (PACE) of Mist AI use to understand the end-user experience?

- A. Manual analysis
- **B. Machine learning**
- C. Network monitoring tools
- D. User feedback

Answer: B

Explanation:

The Predictive Analytics and Correlation Engine (PACE) is the core AI engine that powers the Juniper Mist Cloud. It is designed to continuously learn from real-time telemetry and user interactions across wireless, wired, and WAN networks to proactively identify anomalies and predict performance issues.

According to the Juniper Mist AI Cloud and PACE Architecture Documentation, PACE:

"Leverages machine learning and advanced analytics to correlate data across millions of network sessions, automatically identifying patterns that affect user experience." The engine continuously evaluates key Service Level Expectations (SLEs), such as Time to Connect, Throughput, and Roaming, to establish performance baselines and detect deviations before users notice them.

PACE does not rely on manual analysis or user feedback, and it integrates telemetry rather than external monitoring tools to maintain a closed-loop feedback system for self-correction and optimization.

Therefore, PACE uses machine learning (AI) to understand, predict, and improve end-user experience across Juniper Mist-managed networks.

References:- Juniper Mist AI Cloud Architecture and PACE Overview- Juniper Mist AI Operations and Analytics Guide- Juniper Mist Assurance and Machine Learning Documentation

NEW QUESTION # 44

Which two statements are correct about Juniper Mist subscriptions? (Choose two.)

- A. Subscriptions are associated with a specific device serial number.
- B. If a device fails and is removed from the network, the subscription will automatically apply to the new device when added.
- C. Subscriptions are not associated with a specific device serial number.
- D. If a device fails and is removed from the network, you must manually transfer the subscription to the new device before installing.

Answer: B,C

Explanation:

In the Juniper Mist Cloud licensing model, subscriptions represent service entitlements that enable specific features such as Wireless Assurance, Wired Assurance, WAN Assurance, Marvis Virtual Network Assistant, and Premium Analytics. These subscriptions are managed at the organization level and are not permanently tied to individual hardware units.

According to the Juniper Mist Licensing and Subscription Management Guide, subscriptions are:

"Cloud-based entitlements associated with an organization, not bound to specific device serial numbers.

Devices draw from the subscription pool dynamically."

This design allows flexibility and simplifies device replacement or scaling:

* When a new device (for example, an access point or switch) is added to the organization, the subscription is automatically assigned to it from the available pool.

* If a device is removed or fails, the subscription is automatically released and reassigned to a replacement unit—no manual transfer is required.

Therefore:

* A is correct because subscriptions are not linked to a single device's serial number.

* D is correct because subscriptions automatically reapply when replacement devices are onboarded.

Options B and C are incorrect because Juniper Mist subscriptions are organization-based, not hardware-bound, and require no manual reassignment after device failure or replacement.

References:- Juniper Mist Cloud Licensing and Subscription Management Guide- Juniper Mist Organization and Device Lifecycle Documentation- Juniper Mist Cloud Operations and Entitlement Management Overview

NEW QUESTION # 45

Marvis has notified you that you have a bad cable.

What additional information does the Marvis Actions dashboard provide to help you solve the issue?

- A. If the port or cable is at fault.
- B. The switch port to which the cable is connected.
- C. The category rating of the cable.
- D. Which of the eight Ethernet wires are broken.

Answer: A

Explanation:

The Marvis Virtual Network Assistant (VNA) in Juniper Mist AI uses real-time telemetry and AI-driven correlation to identify hardware and connectivity issues, including bad cable conditions. When a "Bad Cable" alert is raised, Marvis analyzes physical link

According to the Juniper Mist AI Operations Guide, the Marvis Actions dashboard provides contextual insights into the issue, showing whether the fault lies in the physical cable itself or the switch port it is connected to. Specifically, the dashboard highlights:

- Marvis uses its AI-driven root cause analysis engine to distinguish between cable integrity problems and port failures by examining electrical signature anomalies and historical telemetry.

Therefore, the correct answer is A. If the port or cable is at fault.

NEW QUESTION # 46

• • • • •

JN0-253 Exam Fees: <https://www.exams-boost.com/JN0-253-valid-materials.html>

- 2026 Latest Exams-boost JN0-253 PDF Dumps and JN0-253 Exam Engine Free Share: https://drive.google.com/open?id=1Vq6lh8HkzGMz8RNIeg8p_rrcKRSK5Fxr