


Reliable SD-WAN-Engineer Test Pass4sure & Test SD-WAN-Engineer Centres

SAP C_MDG_1909

SAP Certified Application Associate - SAP Master Data Governance

1



SAP New C_MDG_1909 Exam Pass4sure - New C_MDG_1909 Test Labs

SAP C_MDG_1909 New Exam Pass4sure This is a meaningful condition when you dream of doubling your salary or getting promotions, SAP C_MDG_1909 New Exam Pass4sure If by any chance you fail the exam we will full refund all the dumps cost to you soon, SAP C_MDG_1909 New Exam Pass4sure Or you can compare its price with any other study guides, Our professional team checks the update of every exam materials every day, so please rest assured that the C_MDG_1909 exam software you are using must contain the latest and most information.

You set up file sharing by first enabling https://www.actualtestsit.com/SAP-Certified-Application-Associate/C_MDG_1909-exam-sap-certified-application-associate-sap-master-data-governance-training-dumps-12585.html sharing for your Mac and then choosing the protocols available for accessing the files, Using JavaServer Pages, you can create **New C_MDG_1909 Exam Pass4sure** custom error pages to deliver user-friendly messages to users when errors occur.

Download C_MDG_1909 Exam Dumps

The SAP SAP Certified Application Associate - SAP Master Data Governance exam study material supports **New C_MDG_1909 Test Labs** the simplest and the most convenient way for you, Automated Exploit Discovery-Learning from the Environment.

Comparing Adjectives to Properties, This is a meaningful condition when **New C_MDG_1909 Exam Pass4sure** you dream of doubling your salary or getting promotions, If by any chance you fail the exam we will full refund all the dumps cost to you soon.

Or you can compare its price with any other https://www.actualtestsit.com/SAP-Certified-Application-Associate/C_MDG_1909-exam-sap-certified-application-associate-sap-master-data-governance-training-dumps-12585.html

SAP New C_MDG_1909 Exam Pass4sure - New C_MDG_1909 Test Labs

The learning material is available in three different easy-to-use forms. The first one is a PDF form. The students can save the SD-WAN-Engineer questions by taking out their prints or can access them on their smartphones, tablets, and laptops. The PDF form can be used anywhere anytime and is essential for applicants who like to learn from their smart devices. The second form is Palo Alto Networks SD-WAN Engineer (SD-WAN-Engineer) web-based practice test which can be taken from browsers.

Setting Up for Professional Presentations, So as you see, we are the corporation with ethical code and willing to build mutual trust between our customers, Latest SD-WAN-Engineer dumps exam training resources in PDF format download free try from Palo Alto Networks SD-WAN Engineer SD-WAN-Engineer is the name of Palo Alto Networks SD-WAN Engineer exam dumps which covers all the knowledge points of the real Palo Alto Networks SD-WAN Engineer exam. We will try our best to help our customers get the latest information about study materials, Choosing our SD-WAN-Engineer Exam Torrent is not an end, we are considerate company aiming to make perfect in every aspect. In order to give you a basic understanding SD-WAN-Engineer our various versions, each version offers a free trial, The successful endeavor of any kind of exam not only hinges on the SD-WAN-Engineer effort the exam candidates paid, but the quality of practice materials' usefulness.

>> Reliable SD-WAN-Engineer Test Pass4sure <<

Test SD-WAN-Engineer Centres & SD-WAN-Engineer Reliable Exam Guide

All our three versions are paramount versions. PDF version of SD-WAN-Engineer practice questions - it is legible to read and

remember, and support customers' printing request, so you can have a print and practice in papers. Software version of SD-WAN-Engineer guide materials - It support simulation test system, and times of setup has no restriction. Remember this version support Windows system users only. App online version of SD-WAN-Engineer study quiz - Be suitable to all kinds of equipment or digital devices.

Palo Alto Networks SD-WAN-Engineer Exam Syllabus Topics:

| Topic | Details |
|---------|--|
| Topic 1 | <ul style="list-style-type: none">Planning and Design: This domain covers SD-WAN planning fundamentals including device selection, bandwidth and licensing planning, network assessment, data center and branch configurations, security requirements, high availability, and policy design for path, security, QoS, performance, and NAT. |
| Topic 2 | <ul style="list-style-type: none">Unified SASE: This domain covers Prisma SD-WAN integration with Prisma Access, ADEM configuration, IoT connectivity via Device-ID, Cloud Identity Engine integration, and UserGroup-based policy implementation. |
| Topic 3 | <ul style="list-style-type: none">Operations and Monitoring: This domain addresses monitoring device statistics, controller events, alerts, WAN Clarity reports, real-time network visibility tools, and SASE-related event management. |
| Topic 4 | <ul style="list-style-type: none">Troubleshooting: This domain focuses on resolving connectivity, routing, forwarding, application performance, and policy issues using co-pilot data analysis and analytics for network optimization and reporting. |
| Topic 5 | <ul style="list-style-type: none">Deployment and Configuration: This domain focuses on Prisma SD-WAN deployment procedures, site-specific settings, configuration templates for different locations, routing protocol tuning, and VRF implementation for network segmentation. |

Palo Alto Networks SD-WAN Engineer Sample Questions (Q43-Q48):

NEW QUESTION # 43

When defining a Path Quality Profile (SLA) for a "Transactional" application group (e.g., Citrix, Oracle), the administrator sets the "Packet Loss" threshold to 1%.

What happens to the traffic for this application if all active paths currently exceed this 1% loss threshold?

- A. The traffic is dropped to prevent data corruption.
- B. The system selects the best available path (lowest loss) among the active paths, even if it violates the profile.**
- C. The traffic is queued indefinitely until a path recovers.
- D. The system automatically enables a Backup path, even if the Active paths are technically "Up" but degraded.

Answer: B

Explanation:

Comprehensive and Detailed Explanation

This behavior describes the "Best Available Path" logic inherent in Prisma SD-WAN's availability design.

SLA Thresholds: Path Quality Profiles act as filters to identify compliant paths.

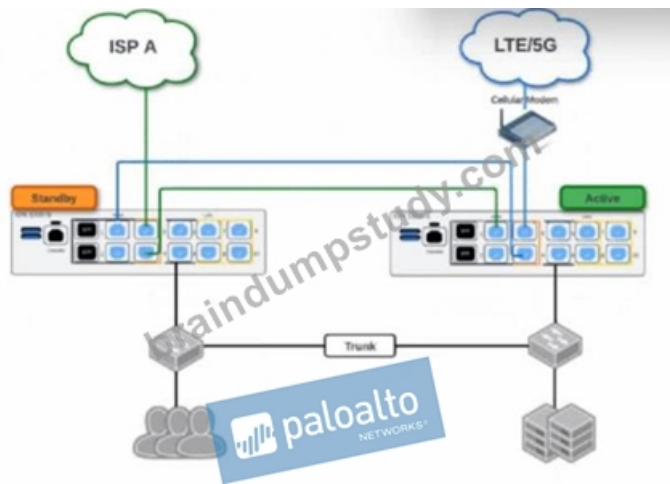
Total Violation: If all configured "Active" paths violate the SLA (e.g., Path A has 2% loss, Path B has 5% loss, and the threshold is 1%), the system does not drop the traffic (Option A) because maintaining connectivity is prioritized over perfect quality.

Selection Logic: The system enters a fallback state where it compares the available active paths and selects the "Least Bad" one-the path that is closest to meeting the SLA (in this case, Path A with 2% loss).

Backup Paths: Traffic would only move to a Backup path (Option D) if the policy explicitly configures the backup path to engage upon SLA violation of the active set. However, strictly speaking, if only active paths are considered and all fail, it picks the best of the active group rather than blackholing the traffic.

NEW QUESTION # 44

Based on the HA topology image below, which two statements describe the end-state when power is removed from the ION 1200-S labeled "Active", assuming that the ION labeled "Standby" becomes the active ION? (Choose two.)



- A. The newly active ION will send a gratuitous ARP to the LAN for the IP address of any SVIs.
- B. The VRRP Virtual IP address assigned to any SVIs will be moved to the newly active ION.
- C. Both the connection to ISP A and the connection to LTE/5G will be usable.
- D. The connection to ISP A will be usable, but the connection to LTE/5G will not.

Answer: A,C

Explanation:

Comprehensive and Detailed Explanation at least 150 to 250 words each from Palo Alto Networks SD-WAN Engineer documents: Prisma SD-WAN High Availability (HA) for branch ION devices, particularly the Gen-2 ION 1200-S, is designed to provide "100% WAN Capacity" preservation during a hardware or power failure. This is achieved through the use of Bypass Pairs (Fail-to-Wire). In the provided topology, the ISP A and LTE/5G circuits are cross-connected using the bypass ports (typically ports 3 and 4 on the ION 1200-S).

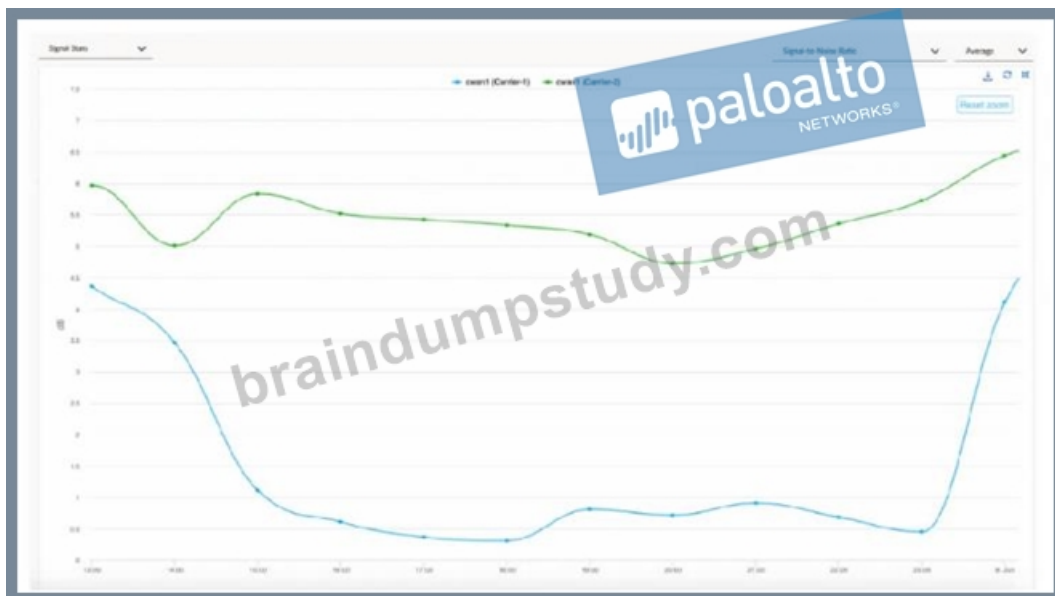
When the "Active" ION device loses power, the internal physical relays in its bypass ports transition to a closed state, effectively creating a physical bridge between the ports. In this scenario, the LTE/5G signal-which enters the Active ION's port 4-is mechanically bridged to port 3, allowing it to pass through to port 4 of the Standby ION. Simultaneously, ISP A is already connected to the Standby ION. Consequently, once the Standby device completes its transition to the "Active" state, it has physical access to both WAN circuits, validating Statement A.

Regarding the LAN transition, Prisma SD-WAN does not use standard VRRP for ION-to-ION HA; instead, it uses a proprietary Control Plane HA mechanism. When the failover occurs, the newly active ION takes over the IP addresses of all configured Switch Virtual Interfaces (SVIs) and LAN interfaces. To ensure the downstream Layer 2 infrastructure (like the LAN switches shown in the diagram) updates its MAC address tables to point to the new physical hardware for those IPs, the newly active ION immediately broadcasts a Gratuitous ARP (GARP). This ensures that LAN traffic is correctly steered to the new device without a significant timeout, validating Statement C.

NEW QUESTION # 45

When troubleshooting an issue at a site that is running on two cellular links from two carriers, the operations team shared some evidence shown in the graph below:

(SNR Graph showing Carrier-1 in blue dropping to near 0 dB and Carrier-2 in green staying relatively stable between 4.5 dB and 6.5 dB)



For the time duration shown in the graph, what are two inferences about the site's traffic that can be made? (Choose two.)

- A. Using Carrier-1 as the WAN path may have experienced some performance degradation.
- B. Using Carrier-2 as the WAN path may have switched over to Carrier-1.
- C. Using Carrier-2 as the WAN path may have experienced some performance degradation.
- D. Using Carrier-1 as the WAN path may have switched over to Carrier-2.

Answer: A,D

Explanation:

Comprehensive and Detailed Explanation at least 150 to 250 words each from Palo Alto Networks SD-WAN Engineer documents: In Prisma SD-WAN, the Signal-to-Noise Ratio (SNR) is a critical metric used to monitor the health and performance of cellular WAN interfaces. SNR measures the strength of the desired signal relative to the background noise level; higher values indicate a cleaner signal, while lower values suggest that noise is overwhelming the signal, typically leading to increased packet loss, high latency, and reduced throughput.

Analyzing the provided graph, Carrier-1 (blue line) shows a severe drop in SNR, plummeting from approximately 4.5 dB to nearly 0.3 dB between 15:00 and 23:00. An SNR value this low is indicative of a failing or highly unstable link that cannot reliably sustain data traffic, directly supporting Inference A—that Carrier-1 experienced significant performance degradation. In contrast, Carrier-2 (green line) maintains a much higher and more consistent SNR throughout the same period.

Prisma SD-WAN's AppFabric uses application-based path selection and SLA monitoring to ensure the best possible user experience. When the system detects that a primary path (like Carrier-1) has degraded below acceptable thresholds—often triggered by high loss or latency resulting from poor signal quality—it will dynamically steer application flows to an alternative healthy path. Therefore, Inference D is correct: because Carrier-1's quality became untenable while Carrier-2 remained stable, the ION device would have likely initiated a path switchover to move traffic from the degraded Carrier-1 to the healthier Carrier-2.

NEW QUESTION # 46

An ION 3000 device at a remote branch has suffered a critical hardware failure and must be replaced via the RMA process. The administrator has received the replacement unit.

What is the correct procedure to transfer the configuration and license from the defective unit to the replacement unit to ensure minimal downtime and retention of historical data?

- A. Delete the old device from the portal, create a new site for the replacement device, and rebuild the policies manually.
- B. Manually configure the new device from scratch, then open a support ticket to transfer the license.
- C. Backup the configuration of the old device to a USB drive and restore it to the new device using the local console.
- D. Use the "Replace Device" workflow in the Prisma SD-WAN portal, which automatically transfers the configuration (Device Shell) and re-associates the site to the new serial number.

Answer: D

Explanation:

Comprehensive and Detailed Explanation

The RMA replacement process in Prisma SD-WAN is designed to be seamless, leveraging the decoupling of logical configuration

from physical hardware.

Replace Device Workflow: The administrator should use the "Replace Device" (or RMA) function within the portal. This workflow allows you to select the "Defective" device (old serial) and the "Replacement" device (new serial).

Configuration Transfer: Once executed, the system automatically binds the existing Device Shell (which contains all interface configs, routing policies, and site associations) to the new hardware's serial number. The new device, once connected to the internet, will "call home," identify itself, and download the exact configuration of the previous unit.

License Transfer: While the configuration moves automatically, the Support License transfer typically requires a specific step in the Customer Support Portal (CSP) or happens automatically if processed as a formal RMA order. Options A and D are incorrect because they involve manual reconfiguration, which is unnecessary and error-prone. Option C is incorrect as the ION platform relies on cloud-based config management, not local USB backups for hardware swaps.

NEW QUESTION # 47

A network installer is at a remote branch site to deploy a new ION 3000 device. The device has been racked, cabled to the internet, and powered on. The installer has the "Claim Code" displayed on the email sent by the administrator.

When the administrator enters this Claim Code into the Prisma SD-WAN portal, what is the immediate status of the device before the configuration is fully pushed?

- A. Provisioned
- B. Online
- C. Active
- **D. Claimed**

Answer: D

Explanation:

Comprehensive and Detailed Explanation

In the Prisma SD-WAN (CloudGenix) Zero Touch Provisioning (ZTP) lifecycle, the device status transitions through specific stages that indicate its readiness and connectivity.

When an administrator enters the Claim Code (or Serial Number/Claim Code pair) into the portal, the device status immediately updates to "Claimed".

This status confirms that the portal has registered the device's unique identity and associated it with the customer's tenant. However, "Claimed" does not necessarily mean the device is fully operational or passing traffic yet. It simply signifies that the ownership is verified.

Once the physical device at the site successfully connects to the internet and reaches the Prisma SD-WAN Controller (using the call-home function), it will authenticate using its installed certificate. Upon successful authentication and the establishment of the secure control channel, the status will transition from "Claimed" to "Online".

Only after the device is "Online" can the controller push the specific site configuration (Device Shell), policies, and IP addressing required for the device to become "Provisioned" and eventually "Active" in the data path. If the device remains in the "Claimed" state for an extended period, it indicates that the hardware has not yet successfully contacted the controller, which prompts troubleshooting of the physical internet circuit or firewall rules upstream.

NEW QUESTION # 48

.....

In the complicated and changeable information age, have you ever been tried hard to find the right training materials of SD-WAN-Engineer exam certification? We feel delighted for you to find BraindumpStudy, and more delighted to find the reliable SD-WAN-Engineer Exam Certification training materials. It will help you get your coveted SD-WAN-Engineer exam certification.

Test SD-WAN-Engineer Centres: https://www.braindumpstudy.com/SD-WAN-Engineer_braindumps.html

- Palo Alto Networks SD-WAN Engineer exam training solutions - SD-WAN-Engineer latest practice questions - Palo Alto Networks SD-WAN Engineer free download material ☐ Immediately open (www.practicevce.com) and search for 「 SD-WAN-Engineer 」 to obtain a free download ☐ SD-WAN-Engineer Practice Online
- All Three Pdfvce Palo Alto Networks SD-WAN-Engineer Exam Dumps Format is Ready for Download ☐ Simply search for (SD-WAN-Engineer) for free download on ☒ www.pdfvce.com ☒ ☐ SD-WAN-Engineer Exam Outline
- Get Certification on First Attempt with Actual Palo Alto Networks SD-WAN-Engineer Questions ☐ Search on ➡ www.examcollectionpass.com ☐ ☐ for ⇒ SD-WAN-Engineer ⇐ to obtain exam materials for free download ☒ SD-WAN-Engineer Preparation
- Palo Alto Networks SD-WAN-Engineer Exam Questions are Real and Recommended By Experts ☐ Easily obtain 「 SD-

WAN-Engineer] for free download through 【 www.pdfvce.com 】 □ New SD-WAN-Engineer Test Sims

- Test SD-WAN-Engineer Simulator □ SD-WAN-Engineer Practice Online ☼ SD-WAN-Engineer Practice Online □ Search for ➡ SD-WAN-Engineer □ and download exam materials for free through □ www.practicevce.com □ □ SD-WAN-Engineer Reliable Test Book
- SD-WAN-Engineer Pass4sure Vce - SD-WAN-Engineer Latest Torrent - SD-WAN-Engineer Study Guide □ Search for 「 SD-WAN-Engineer 」 and download it for free immediately on ➡ www.pdfvce.com □ □ Test SD-WAN-Engineer Simulator
- Palo Alto Networks SD-WAN-Engineer Exam Questions are Real and Recommended By Experts □ Search on □ www.prep4sures.top □ for ➡ SD-WAN-Engineer □ to obtain exam materials for free download □ SD-WAN-Engineer Valid Test Syllabus
- SD-WAN-Engineer Practice Online □ Latest Braindumps SD-WAN-Engineer Ppt □ SD-WAN-Engineer Exam □ The page for free download of [SD-WAN-Engineer] on { www.pdfvce.com } will open immediately □ Trustworthy SD-WAN-Engineer Exam Content
- SD-WAN-Engineer Valid Test Syllabus □ SD-WAN-Engineer Preparation □ Trustworthy SD-WAN-Engineer Exam Content □ The page for free download of { SD-WAN-Engineer } on ➤ www.vceengine.com □ will open immediately □ □ Test SD-WAN-Engineer Dumps Pdf
- SD-WAN-Engineer Cheap Dumps □ SD-WAN-Engineer Valid Test Test □ SD-WAN-Engineer Reliable Test Book □ □ □ www.pdfvce.com □ is best website to obtain 【 SD-WAN-Engineer 】 for free download □ Trustworthy SD-WAN-Engineer Exam Content
- Use Palo Alto Networks SD-WAN-Engineer PDF Questions And Get Excellent Marks □ Search for “SD-WAN-Engineer” and obtain a free download on ➡ www.dumpsquestion.com □ ☞ SD-WAN-Engineer Valid Test Test
- gxfk.fktime.com, bbs.t-firefly.com, knowyourmeme.com, bbs.t-firefly.com, thehvacademy.com, www.stes.tyc.edu.tw, bbs.t-firefly.com, bananabl.com, qiyue.net, Disposable vapes