

# Quiz Microsoft - AZ-500 - Microsoft Azure Security Technologies Perfect Exam Registration



P.S. Free & New AZ-500 dumps are available on Google Drive shared by ActualTestsQuiz <https://drive.google.com/open?id=1eAOLtt8kIVKNsoQts7Yw0f4gbIsN8rXz>

The PDF version of our AZ-500 guide quiz is prepared for you to print it and read it everywhere. It is convenient for you to see the answers to the questions and remember them. After you buy the PDF version of our AZ-500 study material, you will get an E-mail form us in 5 to 10 minutes after payment. Once any new question is found, we will send you a link to download a new version of the AZ-500 training engine. So don't worry if you are left behind the trend.

The AZ-500 exam is intended for security engineers, security administrators, and other IT professionals who are responsible for implementing security controls, maintaining compliance requirements, and managing security incidents in Azure. AZ-500 exam is also suitable for individuals who want to enhance their career prospects in the field of cloud security. Microsoft Azure Security Technologies certification is best suited for those who are already familiar with Azure, and have experience working with cloud-based solutions.

Earning the Microsoft AZ-500 Certification demonstrates your expertise in securing Azure cloud services and can help you advance your career in the cloud security field. Microsoft Azure Security Technologies certification is also a prerequisite for other advanced Azure certifications, such as the Microsoft Certified: Azure Security Engineer Associate.

>> Exam AZ-500 Registration <<

## 2026 Exam AZ-500 Registration 100% Pass | Pass-Sure AZ-500: Microsoft Azure Security Technologies 100% Pass

The Microsoft AZ-500 PDF format is printable which enables you to do paper study. It contains pool of actual and updated Microsoft Azure Security Technologies (AZ-500) exam questions. You can carry this portable file of Microsoft AZ-500 Real Questions to any place via smartphones, laptops, and tablets. This simple and convenient format of ActualTestsQuiz's Microsoft Azure Security Technologies (AZ-500) practice material is being updated regularly.

### What skills outline should the learners explore?

The Microsoft AZ-500 Exam covers four major topics, which are as follows:

#### Managing identity and access

- Managing Azure Active Directory identities: this requires one's competency in customizing security for service principals; managing Azure AD directory groups; managing Azure AD users; customizing password writeback; customizing authentication tools, such as Pass Through Authentication (PTA) and password hash, OAuth, and passwordless; transferring

Azure subscriptions between Azure AD tenants.

- Managing access control: the test takers should be able to customize resource and subscription permissions; configure custom RBAC roles; customize resource group permissions; define the appropriate role; implement least privilege principle; interpret permissions; verify access.
- Configuring secure access with the help of Azure AD: the examinees need to demonstrate their ability to verify privileged access to Azure AD Privileged Identity Management; customize Access Reviews; initiate and customize PIM; execute Conditional Access policies such as Multi-Factor Authentication (MFA); customize Azure AD identity protection.
- Managing application access: this includes creating App Registration; customizing App Registration permission scopes; managing API access to Azure subscriptions and resources; managing App Registration permission consent.

## Microsoft Azure Security Technologies Sample Questions (Q285-Q290):

### NEW QUESTION # 285

You have a hybrid configuration of Azure Active Directory (Azure AD).

All users have computers that run Windows 10 and are hybrid Azure AD joined.

You have an Azure SQL database that is configured to support Azure AD authentication.

Database developers must connect to the SQL database by using Microsoft SQL Server Management Studio (SSMS) and authenticate by using their on-premises Active Directory account.

You need to tell the developers which authentication method to use to connect to the SQL database from SSMS. The solution must minimize authentication prompts.

Which authentication method should you instruct the developers to use?

- A. Active Directory - Password
- B. Active Directory - Universal with MFA support
- C. SQL Login
- D. Active Directory - Integrated

**Answer: D**

Explanation:

Explanation

Azure AD can be the initial Azure AD managed domain. Azure AD can also be an on-premises Active Directory Domain Services that is federated with the Azure AD.

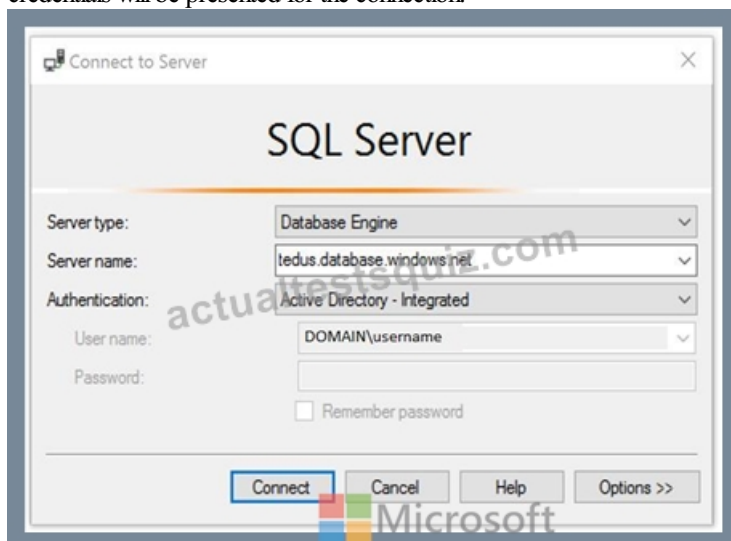
Using an Azure AD identity to connect using SSMS or SSDT

The following procedures show you how to connect to a SQL database with an Azure AD identity using SQL Server Management Studio or SQL Server Database Tools.

Active Directory integrated authentication

Use this method if you are logged in to Windows using your Azure Active Directory credentials from a federated domain.

1. Start Management Studio or Data Tools and in the Connect to Server (or Connect to Database Engine) dialog box, in the Authentication box, select Active Directory - Integrated. No password is needed or can be entered because your existing credentials will be presented for the connection.



2. Select the Options button, and on the Connection Properties page, in the Connect to database box, type the name of the user database you want to connect to. (The AD domain name or tenant ID" option is only supported for Universal with MFA connection options, otherwise it is greyed out.) References:

### NEW QUESTION # 286

You have two Azure virtual machines in the East US2 region as shown in the following table.

Name	Operating system	Type	Tier
VM1	Windows Server 2008 R2	A3	Basic
VM2	Ubuntu 16.04-DAILY-LTS	L4s	Standard

You deploy and configure an Azure Key vault.

You need to ensure that you can enable Azure Disk Encryption on VM1 and VM2.

What should you modify on each virtual machine? To answer, select the appropriate options in the answer area.

NOTE: Each correct selection is worth one point.

VM1:

The operating system version  
The tier  
The type

VM2:

The operating system version  
The tier  
The type

**Answer:**

Explanation:

VM1:

The operating system version  
The tier  
The type

VM2:

The operating system version  
The tier  
The type

Reference:

<https://docs.microsoft.com/en-us/azure/virtual-machines/windows/generation-2#generation-1-vs-generation-2-capabilities>

### NEW QUESTION # 287

You have an Azure subscription that is linked to an Azure AD tenant and contains the virtual machines shown in the following table.

Name	Connected to	Private IP address	Public IP address
VM1	VNET1/Subnet1	10.1.1.5	20.224.219.170
VM2	VNET1/Subnet2	10.1.2.5	20.224.219.230
VM3	VNET2/Subnet1	10.11.1.5	40.122.155.212

The subnets of the virtual networks have the service endpoints shown in the following table.

Subnet	Service endpoint
VNET1/Subnet1	Microsoft.Storage
VNET1/Subnet2	Microsoft.KeyVault
VNET2/Subnet1	Microsoft.Storage, Microsoft.KeyVault

You create the resources shown in the following table.

Name	Type
storage1	Azure Storage account
Vault1	Azure Key Vault

For each of the following statements, select Yes if the statement is true. Otherwise, select No. NOTE: Each correct selection is worth one point.

**Answer Area**

Statements	Yes	No
Connections from VM1 to storage1 always use IP address 10.1.1.5.	<input type="radio"/>	<input type="radio"/>
Connections from VM2 to Vault1 always use IP address 20.224.219.230.	<input type="radio"/>	<input type="radio"/>
Authentication from VM3 to the tenant uses either IP address 10.11.1.5 or 40.122.155.212.	<input type="radio"/>	<input type="radio"/>

**Answer:**

**Explanation:**

**Answer Area**

Statements	Yes	No
Connections from VM1 to storage1 always use IP address 10.1.1.5.	<input checked="" type="radio"/>	<input type="radio"/>
Connections from VM2 to Vault1 always use IP address 20.224.219.230.	<input type="radio"/>	<input checked="" type="radio"/>
Authentication from VM3 to the tenant uses either IP address 10.11.1.5 or 40.122.155.212.	<input type="radio"/>	<input checked="" type="radio"/>

### NEW QUESTION # 288

You have an Azure subscription named Subscription1 that contains the resources shown in the following table.

Name	Type	Description
EventHub1	Azure Event Hubs	Not applicable
Adf1	Azure Data Factory	Not applicable
NVA1	Network virtual appliance (NVA)	The NVA sends security event messages in the Common Event Format (CEF).

You have an Azure subscription named Subscription2 that contains the following resources:

- \* An Azure Sentinel workspace
- \* An Azure Event Grid instance

You need to ingest the CEF messages from the NVAs to Azure Sentinel.



What should you configure for each subscription? To answer, select the appropriate options in the answer area.  
NOTE: Each correct selection is worth one point.

Subscription1:

An Azure Log Analytics agent on a Linux virtual machine
A Data Factory pipeline
An Event Hubs namespace
An Azure Service Bus queue

Subscription2:

A new Azure Log Analytics workspace
A new Azure Sentinel data connector
A new Azure Sentinel playbook
A new Event Grid resource provider

**Answer:**

Explanation:

Subscription1:

An Azure Log Analytics agent on a Linux virtual machine
A Data Factory pipeline
An Event Hubs namespace
An Azure Service Bus queue

Subscription2:

A new Azure Log Analytics workspace
A new Azure Sentinel data connector
A new Azure Sentinel playbook
A new Event Grid resource provider

Explanation:

Graphical user interface, text, application, email Description automatically generated

Subscription1:

An Azure Log Analytics agent on a Linux virtual machine
A Data Factory pipeline
An Event Hubs namespace
An Azure Service Bus queue

Subscription2:

A new Azure Log Analytics workspace
A new Azure Sentinel data connector
A new Azure Sentinel playbook
A new Event Grid resource provider

## NEW QUESTION # 289

You have an Azure Active Directory (Azure AD) tenant that contains the users shown in the following table.

Name	Member of	Multi-factor authentication (MFA) status
User1	Group1, Group2	Enabled
User2	Group1	Disabled
User3	Group1	Disabled

You create and enforce an Azure AD Identity Protection sign-in risk policy that has the following settings:

Assignments: Include Group1, exclude Group2

Conditions: Sign-in risk level: Medium and above

Access Allow access, Require multi-factor authentication

You need to identify what occurs when the users sign in to Azure AD.

What should you identify for each user? To answer, select the appropriate options in the answer area.

NOTE: Each correct selection is worth one point.

When User1 signs in from an anonymous IP address, the user will:

	▼
Be blocked	
Be prompted for MFA	
Sign in by using a username and password only	

When User2 signs in from an unfamiliar location, the user will:

	▼
Be blocked	
Be prompted for MFA	
Sign in by using a username and password only	

When User3 signs in from an infected device, the user will:

	▼
Be blocked	
Be prompted for MFA	
Sign in by using a username and password only	

**Answer:**

**Explanation:**

When User1 signs in from an anonymous IP address, the user will:	<table border="1"><tr><td></td><td>▼</td></tr><tr><td colspan="2">Be blocked</td></tr><tr><td colspan="2">Be prompted for MFA</td></tr><tr><td colspan="2">Sign in by using a username and password only</td></tr></table>		▼	Be blocked		Be prompted for MFA		Sign in by using a username and password only	
	▼								
Be blocked									
Be prompted for MFA									
Sign in by using a username and password only									
When User2 signs in from an unfamiliar location, the user will:	<table border="1"><tr><td></td><td>▼</td></tr><tr><td colspan="2">Be blocked</td></tr><tr><td colspan="2">Be prompted for MFA</td></tr><tr><td colspan="2">Sign in by using a username and password only</td></tr></table>		▼	Be blocked		Be prompted for MFA		Sign in by using a username and password only	
	▼								
Be blocked									
Be prompted for MFA									
Sign in by using a username and password only									
When User3 signs in from an infected device, the user will:	<table border="1"><tr><td></td><td>▼</td></tr><tr><td colspan="2">Be blocked</td></tr><tr><td colspan="2">Be prompted for MFA</td></tr><tr><td colspan="2">Sign in by using a username and password only</td></tr></table>		▼	Be blocked		Be prompted for MFA		Sign in by using a username and password only	
	▼								
Be blocked									
Be prompted for MFA									
Sign in by using a username and password only									

Reference:

<http://www.rebeladmin.com/2018/09/step-step-guide-configure-risk-based-azure-conditional-access-policies/>

<https://docs.microsoft.com/en-us/azure/active-directory/identity-protection/concept-identity-protection-policies>

<https://docs.microsoft.com/en-us/azure/active-directory/identity-protection/concept-identity-protection-risks>

## NEW QUESTION # 290

.....

**Valid Dumps AZ-500 Sheet:** <https://www.actualtestsquiz.com/AZ-500-test-torrent.html>

- AZ-500 Reliable Study Notes ☐ AZ-500 Download Fee ☐ AZ-500 Practice Test Engine ☐ Search for ► AZ-500 ◀ on { [www.practicevce.com](http://www.practicevce.com) } immediately to obtain a free download ☐ AZ-500 Exam PDF
- Training AZ-500 Material ☐ AZ-500 Exam Tests ☐ Training AZ-500 Material ☐ Search for ► AZ-500 ☐ and easily obtain a free download on ⇒ [www.pdfvce.com](http://www.pdfvce.com) ⇐ ☐ Reliable AZ-500 Braindumps Sheet
- 2026 Excellent AZ-500 – 100% Free Exam Registration | Valid Dumps AZ-500 Sheet ☐ Search for ► AZ-500 ◀ and download it for free on ⇒ [www.dumpsmaterials.com](http://www.dumpsmaterials.com) ☐ website ☐ AZ-500 Exam Tests
- AZ-500 Exam Dumps Free ☐ Key AZ-500 Concepts ☐ AZ-500 Real Dumps ☐ Search for ( AZ-500 ) and easily

obtain a free download on ➡ [www.pdfvce.com](http://www.pdfvce.com) ☐☐☐ ☐AZ-500 Download Fee

- AZ-500 Exam Tutorial (M) AZ-500 Reliable Study Notes ☐ Valid AZ-500 Test Topics ☐ Easily obtain ➤ AZ-500 ☐ for free download through ➡ [www.vce4dumps.com](http://www.vce4dumps.com) ☐ ☐Reliable AZ-500 Braindumps Sheet
- Reliable AZ-500 Braindumps Sheet ☐ Valid AZ-500 Test Topics ☐ AZ-500 Best Study Material ☐ Search for ➡➡ AZ-500 ☐ and download it for free on ⇒ [www.pdfvce.com](http://www.pdfvce.com) ⇐ website ☐AZ-500 Practice Test Engine
- Hot Exam AZ-500 Registration - 100% Pass-Rate Valid Dumps AZ-500 Sheet - Useful AZ-500 Exam Training ☐ ➡ [www.testkingpass.com](http://www.testkingpass.com) ☐ is best website to obtain ➡➡ AZ-500 ☐ for free download ☐AZ-500 Download Fee
- Key AZ-500 Concepts ☐ AZ-500 Exam Dumps Free ☐ AZ-500 Certified ☐ Search for ➡➡ AZ-500 ☐ and download it for free immediately on ▷ [www.pdfvce.com](http://www.pdfvce.com) ◁ ☐Downloadable AZ-500 PDF
- AZ-500 Certification Training: Microsoft Azure Security Technologies - AZ-500 Study Guide - AZ-500 Exam Bootcamp ☐ ☐ Easily obtain free download of 《 AZ-500 》 by searching on 《 [www.torrentvce.com](http://www.torrentvce.com) 》 ☐Training AZ-500 Material
- Valid AZ-500 Test Topics ☐ Key AZ-500 Concepts ☐ AZ-500 Test Collection Pdf ☐ 《 [www.pdfvce.com](http://www.pdfvce.com) 》 is best website to obtain “AZ-500 ” for free download ☕ AZ-500 Exam Tests
- Microsoft AZ-500 exam pdf dumps ☐ Search for ➤ AZ-500 ☐ and download exam materials for free through “ [www.vceengine.com](http://www.vceengine.com) ” ☐AZ-500 Certified
- [academy.widas.de](http://academy.widas.de), [www.stes.tyc.edu.tw](http://www.stes.tyc.edu.tw), [www.stes.tyc.edu.tw](http://www.stes.tyc.edu.tw), [www.stes.tyc.edu.tw](http://www.stes.tyc.edu.tw), [www.stes.tyc.edu.tw](http://www.stes.tyc.edu.tw), [myportal.utt.edu.tt](http://myportal.utt.edu.tt), [myportal.utt.edu.tt](http://myportal.utt.edu.tt), [myportal.utt.edu.tt](http://myportal.utt.edu.tt), [myportal.utt.edu.tt](http://myportal.utt.edu.tt), [myportal.utt.edu.tt](http://myportal.utt.edu.tt), [myportal.utt.edu.tt](http://myportal.utt.edu.tt), [myportal.utt.edu.tt](http://myportal.utt.edu.tt), [myportal.utt.edu.tt](http://myportal.utt.edu.tt), [myportal.utt.edu.tt](http://myportal.utt.edu.tt), [www.stes.tyc.edu.tw](http://www.stes.tyc.edu.tw), [tumainiinstitute.ac.ke](http://tumainiinstitute.ac.ke), [www.stes.tyc.edu.tw](http://www.stes.tyc.edu.tw), [myportal.utt.edu.tt](http://myportal.utt.edu.tt), [myportal.utt.edu.tt](http://myportal.utt.edu.tt), [myportal.utt.edu.tt](http://myportal.utt.edu.tt), [myportal.utt.edu.tt](http://myportal.utt.edu.tt), [myportal.utt.edu.tt](http://myportal.utt.edu.tt), [myportal.utt.edu.tt](http://myportal.utt.edu.tt), [myportal.utt.edu.tt](http://myportal.utt.edu.tt), [myportal.utt.edu.tt](http://myportal.utt.edu.tt), Disposable vapes

DOWNLOAD the newest ActualTestsQuiz AZ-500 PDF dumps from Cloud Storage for free: <https://drive.google.com/open?id=1eAOLtt8kIVKNsoQts7Yw0f4gbIsN8rXz>