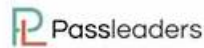
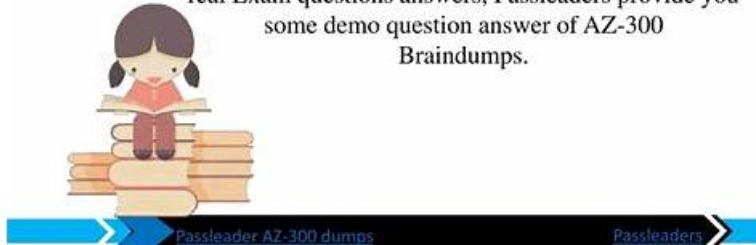


300-420 Valid Braindumps Ppt & Test 300-420 Cram Review



You Don't need to take any stress for the preparation of AZ-300 Exam Questions because we will provide you real Exam questions answers, Passleaders provide you some demo question answer of AZ-300 Braindumps.



2026 Latest Prep4away 300-420 PDF Dumps and 300-420 Exam Engine Free Share: <https://drive.google.com/open?id=1bIOo1PYRqLkXweb62b2EeLzNSzBzNbOn>

You still can pass the exam with our help. The key point is that you are serious on our Cisco 300-420 exam questions and not just kidding. Our 300-420 practice engine can offer you the most professional guidance, which is helpful for your gaining the certificate. And our Designing Cisco Enterprise Networks 300-420 learning guide contains the most useful content and keypoints which will come up in the real exam.

Cisco 300-420 certification exam is ideal for network architects, network engineers, and IT professionals who want to advance their careers by acquiring advanced skills in network design. 300-420 exam is part of the Cisco Certified Network Professional (CCNP) Enterprise certification track and is a requirement for obtaining the Cisco Certified Design Professional (CCDP) certification.

Cisco 300-420 is an advanced level certification exam for designing Cisco enterprise networks. 300-420 Exam is designed to test the expertise of network architects and engineers who are responsible for designing and implementing complex enterprise network solutions. Designing Cisco Enterprise Networks certification is highly valued in the industry and is considered a benchmark for networking professionals.

>> 300-420 Valid Braindumps Ppt <<

Test 300-420 Cram Review & 300-420 Reliable Test Forum

If you want to pass an exam just one time, then choose. Our 300-420 exam dumps will provide you such chance like this. 300-420 exam braindumps are verified by experienced experts in the field, and they are quite familiar with the questions and answers of the exam center, therefore the quality of the 300-420 Exam Dumps are guaranteed. Besides we offer free update for 365 days after purchasing.

Network Services

The questions from this subject area cover 20% of the entire content and evaluate the candidates' ability to perform the following operations:

- Design the techniques for network management, such as prioritize network management traffic, in-band versus out-of-band, and segmented management networks;
- Design SSM, MSDP, and PIM bi-directional multicast services.
- Design the policies for end-to-end QoS, including queuing, shaping, policing, marking & classification;
- Explain the concepts of multicast routing (rendezvous points, source trees, shared trees, and RPF);
- Choose the relevant QoS strategies to meet the requirements of customers;

Cisco Designing Cisco Enterprise Networks Sample Questions (Q32-Q37):

NEW QUESTION # 32

Drag and drop the characteristics from the left onto the correct telemetry mode on the right.

The collector initiates a session to the device

supports TCP, UDP, and gRPC

The device initiates a session to the collector

supports gRPC only

Dial-In

Dial-Out

Answer:

Explanation:

The collector initiates a session to the device

supports TCP, UDP, and gRPC

The device initiates a session to the collector

supports gRPC only

Dial-In

The collector initiates a session to the device

supports gRPC only

Dial-Out

The device initiates a session to the collector

supports TCP, UDP, and gRPC

Explanation:

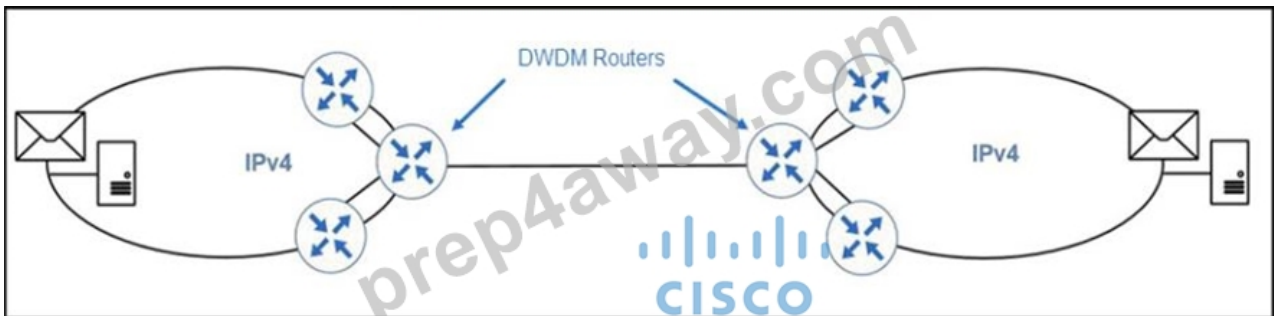
In a dial-in mode, the destination initiates a session to the router and subscribes to data to be streamed. Dialin mode is supported over gRPC in only 64-bit platforms In a dial-out mode, the router initiates a session to the destinations based on the subscription. All 64-bit IOS XR platforms (except for NCS 6000 series routers) support gRPC and TCP protocols. All 32-bit IOS XR platforms support only TCP.

Reference:

https://www.cisco.com/c/en/us/td/docs/iosxr/asr9000/telemetry/b-telemetry-cg-asr9000-61x/b-telemetry-cgasr9000-61x_chapter_010.html#id_36445

NEW QUESTION # 33

Refer to the exhibit.

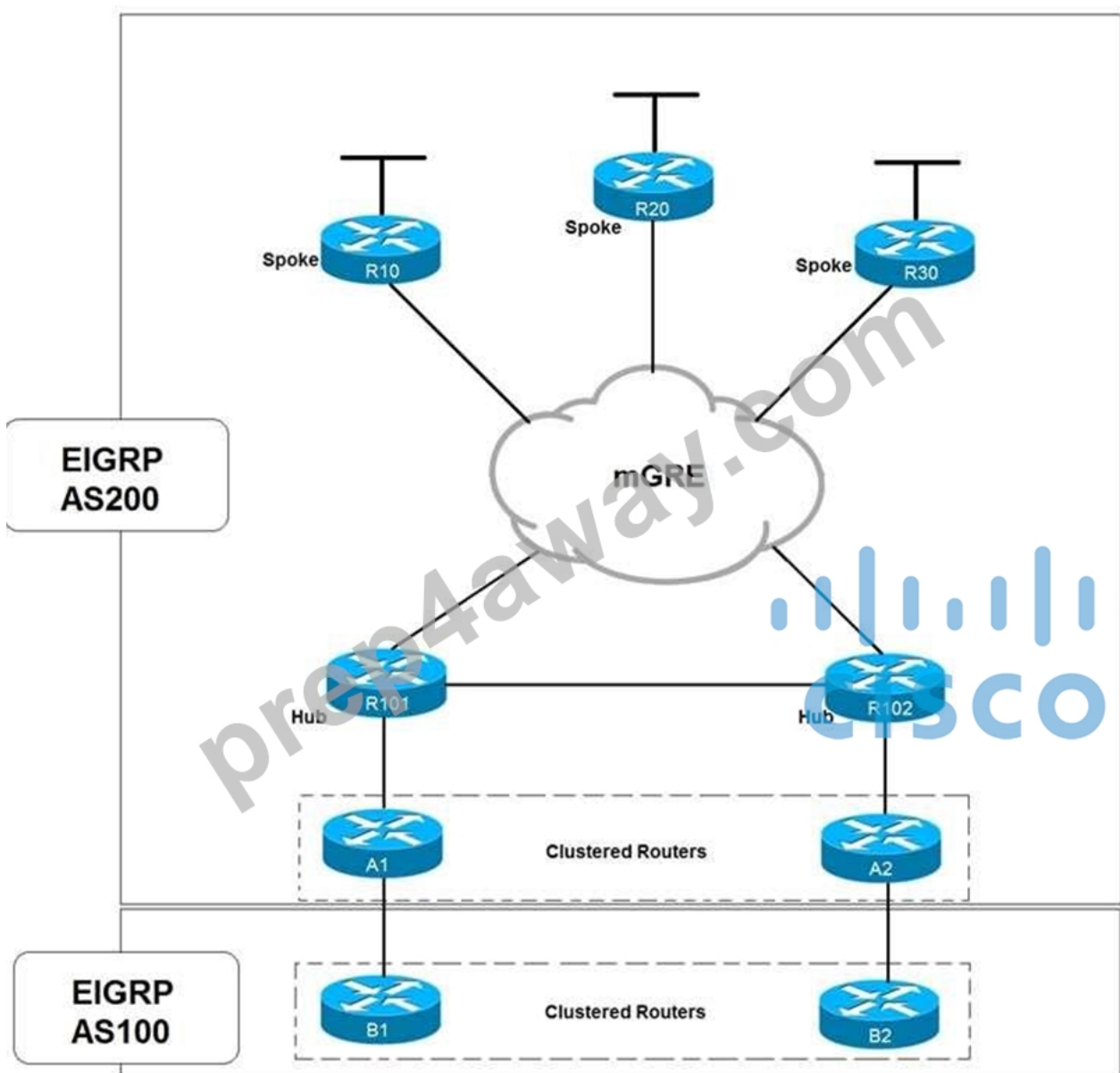


Refer to the exhibit. An engineer is planning an IPv4 to IPv6 migration solution for a customer. The routers in the network can support IPv4 and IPv6, except for the DWDM routers. The DWDM routers provide a Layer 2 link in which the routers peer directly with each other across a DWDM circuit. The circuit also provides connectivity between the mail servers. Which IPv6 migration technique must the engineer deploy?

- A. ISATAP
- B. dual-stack
- C. 6to4
- D. 6rd

Answer: D

NEW QUESTION # 34



Refer to the exhibit. Which solution decreases the EIGRP convergence time?

- A. Increase the hold time value
- B. Increase the dead timer value
- C. Enable subsecond timers
- D. Enable stub routing on the spokes

Answer: D

NEW QUESTION # 35

An engineer is working for a large cable TV provider that requires multiple sources streaming video on different channels using multicast with no rendezvous point. Which multicast protocol meets these requirements?

- A. BIDIR-PIM
- B. PIM-SM
- C. any-source multicast
- D. PIM-SSM

Answer: D

NEW QUESTION # 36

