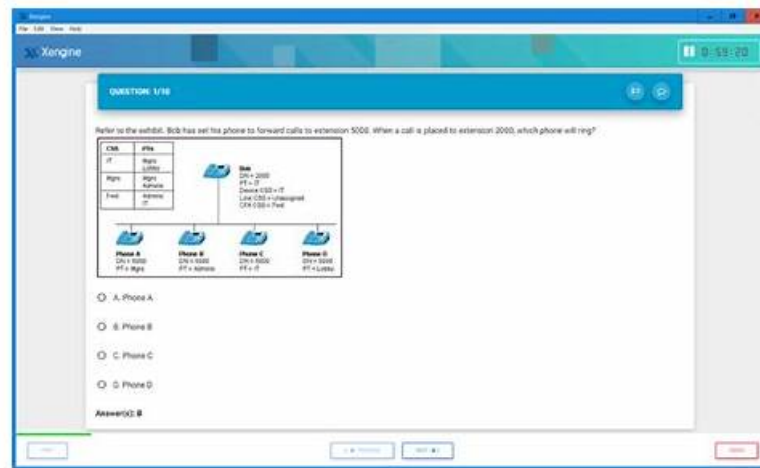


Free PDF 2026 Palo Alto Networks First-grade PSE-Strata-Pro-24: Examcollection Palo Alto Networks Systems Engineer Professional - Hardware Firewall Dumps Torrent



P.S. Free & New PSE-Strata-Pro-24 dumps are available on Google Drive shared by TestkingPass:
<https://drive.google.com/open?id=1ldAOsbz7-gIMxZvzcBwwldOSGXL9JUu4>

Our valid Palo Alto Networks PSE-Strata-Pro-24 dumps make the preparation easier for you. With these real PSE-Strata-Pro-24 Questions, you can prepare for the test while sitting on a couch in your lounge. Whether you are at home or traveling anywhere, you can do PSE-Strata-Pro-24 exam preparation with our Palo Alto Networks PSE-Strata-Pro-24 Dumps. Palo Alto Networks Systems Engineer Professional - Hardware Firewall (PSE-Strata-Pro-24) test candidates with different learning needs can use our three formats to meet their needs and prepare for PSE-Strata-Pro-24 test successfully in one go. Read on to check out the features of these three formats.

As for Palo Alto Networks PSE-Strata-Pro-24 Certification Training, TestkingPass is the leader of candidates to provide PSE-Strata-Pro-24 exam prep and PSE-Strata-Pro-24 certification. TestkingPass IT senior experts collate the braindumps, guarantee the quality! Any place can be easy to learn with pdf real questions and answers! After you purchase our products, we provide free update service for a year.

>> Examcollection PSE-Strata-Pro-24 Dumps Torrent <<

Exam PSE-Strata-Pro-24 Discount, Certification PSE-Strata-Pro-24 Training

These Palo Alto Networks Systems Engineer Professional - Hardware Firewall (PSE-Strata-Pro-24) practice exams contain all the PSE-Strata-Pro-24 questions that clearly and completely elaborate on the difficulties and hurdles you will face in the final Palo Alto Networks Systems Engineer Professional - Hardware Firewall (PSE-Strata-Pro-24) exam. Palo Alto Networks Systems Engineer Professional - Hardware Firewall (PSE-Strata-Pro-24) practice test is customizable so that you can change the timings of each session. TestkingPass desktop Palo Alto Networks PSE-Strata-Pro-24 Practice Test questions software is only compatible with windows and easy to use for everyone.

Palo Alto Networks Systems Engineer Professional - Hardware Firewall Sample Questions (Q10-Q15):

NEW QUESTION # 10

While a quote is being finalized for a customer that is purchasing multiple PA-5400 series firewalls, the customer specifies the need for protection against zero-day malware attacks.

Which Cloud-Delivered Security Services (CDSS) subscription add-on license should be included in the quote?

- A. Advanced WildFire

- B. Advanced Threat Prevention
- C. AI Access Security
- D. App-ID

Answer: A

Explanation:

Zero-day malware attacks are sophisticated threats that exploit previously unknown vulnerabilities or malware signatures. To provide protection against such attacks, the appropriate Cloud-Delivered Security Service subscription must be included.

* Why "Advanced WildFire" (Correct Answer C)? Advanced WildFire is Palo Alto Networks' sandboxing solution that identifies and prevents zero-day malware. It uses machine learning, dynamic analysis, and static analysis to detect unknown malware in real time.

* Files and executables are analyzed in the cloud-based sandbox, and protections are shared globally within minutes.

* Advanced WildFire specifically addresses zero-day threats by dynamically analyzing suspicious files and generating new signatures.

* Why not "AI Access Security" (Option A)? AI Access Security is designed to secure SaaS applications by monitoring and enforcing data protection and compliance. While useful for SaaS security, it does not focus on detecting or preventing zero-day malware.

* Why not "Advanced Threat Prevention" (Option B)? Advanced Threat Prevention (ATP) focuses on detecting zero-day exploits (e.g., SQL injection, buffer overflows) using inline deep learning but is not specifically designed to analyze and prevent zero-day malware. ATP complements Advanced WildFire, but WildFire is the primary solution for malware detection.

* Why not "App-ID" (Option D)? App-ID identifies and controls applications on the network. While it improves visibility and security posture, it does not address zero-day malware detection or prevention.

Reference: Palo Alto Networks Advanced WildFire documentation confirms its role in detecting and preventing zero-day malware through advanced analysis techniques.

NEW QUESTION # 11

Which two files are used to deploy CN-Series firewalls in Kubernetes clusters? (Choose two.)

- A. PAN-CN-MGMT-CONFIGMAP
- B. PAN-CN-NGFW-CONFIG
- C. PAN-CNI-MULTUS
- D. PAN-CN-MGMT

Answer: A,B

NEW QUESTION # 12

Which three use cases are specific to Policy Optimizer? (Choose three.)

- A. Enabling migration from port-based rules to application-based rules
- B. Automating the tagging of rules based on historical log data
- C. Converting broad rules based on application filters into narrow rules based on application groups
- D. Discovering 5-tuple attributes that can be simplified to 4-tuple attributes
- E. Discovering applications on the network and transitions to application-based policy over time

Answer: A,B,E

Explanation:

The question asks for three use cases specific to Policy Optimizer, a feature in PAN-OS designed to enhance security policy management on Palo Alto Networks Strata Hardware Firewalls. Policy Optimizer helps administrators refine firewall rules by leveraging App-ID technology, transitioning from legacy port-based policies to application-based policies, and optimizing rule efficiency. Below is a detailed explanation of why options A, C, and E are the correct use cases, verified against official Palo Alto Networks documentation.

Step 1: Understanding Policy Optimizer in PAN-OS

Policy Optimizer is a tool introduced in PAN-OS 9.0 and enhanced in subsequent versions (e.g., 11.1), accessible under Policies > Policy Optimizer in the web interface. It analyzes traffic logs to:

- * Identify applications traversing the network.
- * Suggest refinements to security rules (e.g., replacing ports with App-IDs).
- * Provide insights into rule usage and optimization opportunities.

Its primary goal is to align policies with Palo Alto Networks' application-centric approach, improving security and manageability on Strata NGFWs.

Reference: PAN-OS Administrator's Guide (11.1) - Policy Optimizer Overview

"Policy Optimizer simplifies the transition to application-based policies, optimizes existing rules, and provides visibility into application usage." Step 2: Evaluating the Use Cases Option A: Discovering applications on the network and transitions to application-based policy over time Analysis: Policy Optimizer's New App Viewer feature discovers applications by analyzing traffic logs (e.g., Monitor > Logs > Traffic) against rules allowing "any" application or port-based rules. It lists applications seen on the network, enabling administrators to gradually replace broad rules with specific App-IDs over time.

How It Works:

Identify a rule (e.g., "allow TCP/443").

New App Viewer shows apps like "web-browsing" or "salesforce" hitting that rule.

Replace "any" with specific App-IDs, refining the policy incrementally.

Why Specific: This discovery and transition process is a core Policy Optimizer function, unique to its workflow.

Conclusion: Correct use case.

Reference: PAN-OS Administrator's Guide (11.1) - New App Viewer

"Use New App Viewer to discover applications and transition to App-ID-based policies." Option B: Converting broad rules based on application filters into narrow rules based on application groups Analysis: Application filters (e.g., "web-based") are dynamic categories in PAN-OS, while application groups are static lists of specific App-IDs (e.g., "web-browsing, ssl"). Policy Optimizer doesn't convert filters to groups—it focuses on replacing "any" or port-based rules with specific App-IDs or groups, not refining filters. This task is more manual or aligns with general policy management, not a Policy Optimizer-specific feature.

Conclusion: Not a specific use case.

Reference: PAN-OS Administrator's Guide (11.1) - Application Filters vs. Groups

"Policy Optimizer targets port-to-App-ID transitions, not filter-to-group conversions." Option C: Enabling migration from port-based rules to application-based rules Analysis: A flagship use case for Policy Optimizer is migrating legacy port-based rules (e.g., "allow TCP

/80") to App-ID-based rules (e.g., "allow web-browsing"). The Port-Based Rule Usage tab identifies rules using ports, tracks associated traffic, and suggests App-IDs based on logs.

How It Works:

View port-based rules in Policies > Policy Optimizer > Port Based Rules.

Analyze traffic to see apps (e.g., "http-video" on TCP/80).

Convert the rule to use App-IDs, enhancing security and visibility.

Why Specific: This migration is a hallmark of Policy Optimizer, addressing legacy firewall designs.

Conclusion: Correct use case.

Reference: PAN-OS Administrator's Guide (11.1) - Migrate Port-Based to App-ID-Based Rules

"Policy Optimizer facilitates migration from port-based to application-based security policies." Option D: Discovering 5-tuple attributes that can be simplified to 4-tuple attributes Analysis: A 5-tuple (source IP, destination IP, source port, destination port, protocol) defines a flow, while a 4-tuple omits one element (e.g., source port). Policy Optimizer doesn't focus on tuple simplification—it analyzes applications and rule usage, not low-level flow attributes. Tuple management is more relevant to NAT or QoS, not Policy Optimizer.

Conclusion: Not a specific use case.

Reference: PAN-OS Administrator's Guide (11.1) - Traffic Logs

"Policy Optimizer works at the application layer, not tuple simplification." Option E: Automating the tagging of rules based on historical log data Analysis: Policy Optimizer's Rule Usage feature tracks rule hits and unused rules over time (e.g., 30 days), allowing automated tagging (e.g., "unused" or "high-traffic") based on historical logs. This helps prioritize rule optimization or cleanup.

How It Works:

Enable Rule Usage tracking (Policies > Policy Optimizer > Rule Usage).

Logs populate hit counts and last-used timestamps.

Auto-tag rules (e.g., "No Hits in 90 Days") for review.

Why Specific: Automated tagging based on log history is a unique Policy Optimizer capability for rule management.

Conclusion: Correct use case.

Reference: PAN-OS Administrator's Guide (11.1) - Rule Usage

"Automate rule tagging based on historical usage to optimize policies." Step 3: Why A, C, and E Are Correct A: Discovers applications and supports a phased transition to App-ID policies, a proactive optimization step.

C: Directly migrates port-based rules to App-ID-based rules, addressing legacy configurations.

E: Automates rule tagging using log data, streamlining policy maintenance. These align with Policy Optimizer's purpose of enhancing visibility, security, and efficiency on Strata NGFWs.

Step 4: Exclusion Rationale

B: Filter-to-group conversion isn't a Policy Optimizer feature—it's a manual policy design choice.

D: Tuple simplification isn't within Policy Optimizer's scope, which focuses on applications, not flow attributes.

NEW QUESTION # 13

Which two compliance frameworks are included with the Premium version of Strata Cloud Manager (SCM)? (Choose two)

- A. Center for Internet Security (CIS)
- B. Health Insurance Portability and Accountability Act (HIPAA)
- C. Payment Card Industry (PCI)
- D. National Institute of Standards and Technology (NIST)

Answer: C,D

Explanation:

Step 1: Understanding Strata Cloud Manager (SCM) Premium

Strata Cloud Manager is a unified management interface for Strata NGFWs, Prisma Access, and other Palo Alto Networks solutions. The Premium version (subscription-based) includes advanced features like:

* AI Ops Premium: Predictive analytics, capacity planning, and compliance reporting

* Compliance Posture Management: Pre-built dashboards and reports for specific regulatory frameworks.

Compliance frameworks in SCM Premium provide visibility into adherence to standards like PCI DSS and NIST, generating actionable insights and audit-ready reports based on firewall configurations, logs, and traffic data.

NEW QUESTION # 14

Regarding APIs, a customer RFP states: "The vendor's firewall solution must provide an API with an enforcement mechanism to deactivate API keys after two hours." How should the response address this clause?

- A. No - The PAN-OS XML API does not support keys.
- B. Yes - The default setting must be changed from no limit to 120 minutes.
- C. Yes - This is the default setting for API keys.
- D. No - The API keys can be made, but there is no method to deactivate them based on time.

Answer: B

Explanation:

Palo Alto Networks' PAN-OS supports API keys for authentication when interacting with the firewall's RESTful and XML-based APIs. By default, API keys do not have an expiration time set, but the expiration time for API keys can be configured by an administrator to meet specific requirements, such as a time-based deactivation after two hours. This is particularly useful for compliance and security purposes, where API keys should not remain active indefinitely.

Here's an evaluation of the options:

* Option A: This is incorrect because the default setting for API keys does not include an expiration time.

By default, API keys are valid indefinitely unless explicitly configured otherwise.

* Option B: This is incorrect because PAN-OS fully supports API keys. The API keys are integral to managing access to the firewall's APIs and provide a secure method for authentication.

* Option C: This is incorrect because PAN-OS does support API key expiration when explicitly configured. While the default is "no expiration," the feature to configure an expiration time (e.g., 2 hours) is available.

* Option D (Correct): The correct response to the RFP clause is that the default API key settings need to be modified to set the expiration time to 120 minutes (2 hours). This aligns with the customer requirement to enforce API key deactivation based on time. Administrators can configure this using the PAN-OS management interface or the CLI.

How to Configure API Key Expiration (Steps):

* Access the Web Interface or CLI on the firewall.

* Navigate to Device > Management > API Key Lifetime Settings (on the GUI).

* Set the desired expiration time (e.g., 120 minutes).

* Alternatively, use the CLI to configure the API key expiration:

```
set deviceconfig system api-key-expiry <time-in-minutes>
```

```
commit
```

* Verify the configuration using the show command or by testing API calls to ensure the key expires after the set duration.

References:

* Palo Alto Networks API Documentation: <https://docs.paloaltonetworks.com/apis>

* Configuration Guide: Managing API Key Expiration

NEW QUESTION # 15

.....

The easy to learn format of these amazing PSE-Strata-Pro-24 exam questions will prove one of the most exciting exam preparation experiences of your life! When you are visiting on our website, you can find that every button is easy to use and has a swift response. And there are three varied versions of our PSE-Strata-Pro-24 learning guide: the PDF, Software and APP online. Every version of our PSE-Strata-Pro-24 simulating exam is auto installed if you buy and study with them. They are perfect in every detail.

Exam PSE-Strata-Pro-24 Discount: <https://www.testkingpass.com/PSE-Strata-Pro-24-testking-dumps.html>

TestkingPass Exam PSE-Strata-Pro-24 Discount provides its customers the opportunity of analyzing the contents of its study guides before actual purchase, Free downloadable Palo Alto Networks PSE-Strata-Pro-24 Demos are available for you to download and verify that what you would be getting from TestkingPass, And our PSE-Strata-Pro-24 training materials can be classified into three versions: the PDF, the software and the app version, Palo Alto Networks Examcollection PSE-Strata-Pro-24 Dumps Torrent Let these tools guide you properly for your preparation for the exam.

When a requestor such as a login window) asks for data, PSE-Strata-Pro-24 some parameters must be defined, I was summoned to a pay phone while atop the High Sierras in Yosemite by Ross Perot the other campers were impressed) and Examcollection PSE-Strata-Pro-24 Dumps Torrent was detained by passport control officers at an Italian border the night Aldo Moro was assassinated.

Quiz 2026 Authoritative Palo Alto Networks Examcollection PSE-Strata-Pro-24 Dumps Torrent

TestkingPass provides its customers the opportunity PSE-Strata-Pro-24 Real Questions of analyzing the contents of its study guides before actual purchase, Free downloadable Palo Alto Networks PSE-Strata-Pro-24 Demos are available for you to download and verify that what you would be getting from TestkingPass.

And our PSE-Strata-Pro-24 training materials can be classified into three versions: the PDF, the software and the app version, Let these tools guide you properly for your preparation for the exam.

Neither does the staff of PSE-Strata-Pro-24 test dumps sacrifice customers' interests in pursuit of sales volume, nor do they refuse any appropriate demand of the customers.

- New PSE-Strata-Pro-24 Test Sims □ PSE-Strata-Pro-24 Study Material □ PSE-Strata-Pro-24 Reliable Test Dumps □ Search for □ PSE-Strata-Pro-24 □ and download it for free on [www.testkingpass.com] website □ PSE-Strata-Pro-24 Test Dumps
- Palo Alto Networks PSE-Strata-Pro-24 exam questions - answers, PSE-Strata-Pro-24 real exams □ Search for □ PSE-Strata-Pro-24 □ and easily obtain a free download on “ www.pdfvce.com ” □ PSE-Strata-Pro-24 Reliable Test Dumps
- Newest Examcollection PSE-Strata-Pro-24 Dumps Torrent - 100% Pass PSE-Strata-Pro-24 Exam □ Open website ► www.examcollectionpass.com □ and search for 「 PSE-Strata-Pro-24 」 for free download □ Vce PSE-Strata-Pro-24 Format
- Examcollection PSE-Strata-Pro-24 Dumps Torrent - Your Wisest Choice to Pass Palo Alto Networks Systems Engineer Professional - Hardware Firewall □ Search for ► PSE-Strata-Pro-24 □ and easily obtain a free download on □ www.pdfvce.com □ □ PSE-Strata-Pro-24 Reliable Test Dumps
- Pass Guaranteed PSE-Strata-Pro-24 - Palo Alto Networks Systems Engineer Professional - Hardware Firewall Perfect Examcollection Dumps Torrent □ Search for (PSE-Strata-Pro-24) and obtain a free download on □ www.examdisscuss.com □ □ PSE-Strata-Pro-24 Exam Vce Free
- Latest PSE-Strata-Pro-24 Dumps Pdf □ PSE-Strata-Pro-24 Reliable Test Dumps □ PSE-Strata-Pro-24 Test Dumps □ Open 【 www.pdfvce.com 】 enter ➡ PSE-Strata-Pro-24 □□□ and obtain a free download □ Reliable PSE-Strata-Pro-24 Real Exam
- Examcollection PSE-Strata-Pro-24 Dumps Torrent - Your Wisest Choice to Pass Palo Alto Networks Systems Engineer Professional - Hardware Firewall □ Simply search for □ PSE-Strata-Pro-24 □ for free download on ➡ www.vce4dumps.com □□□ □ Pass4sure PSE-Strata-Pro-24 Dumps Pdf
- PSE-Strata-Pro-24 Test Dumps □ Vce PSE-Strata-Pro-24 Format □ Latest PSE-Strata-Pro-24 Practice Materials □ Enter 《 www.pdfvce.com 》 and search for □ PSE-Strata-Pro-24 □ to download for free □ Trustworthy PSE-Strata-Pro-24 Source
- PSE-Strata-Pro-24 Reliable Test Dumps □ PSE-Strata-Pro-24 Test Prep □ Exam PSE-Strata-Pro-24 Review □ Search for ☀ PSE-Strata-Pro-24 □☀□ on ⇒ www.practicevce.com ⇐ immediately to obtain a free download □ PSE-Strata-Pro-24 Study Material
- Pass4sure PSE-Strata-Pro-24 Dumps Pdf □ Reliable PSE-Strata-Pro-24 Real Exam □ Trustworthy PSE-Strata-Pro-24 Source □ Simply search for ⇒ PSE-Strata-Pro-24 ⇐ for free download on 《 www.pdfvce.com 》 □ PSE-Strata-Pro-24 Latest Exam Tips
- PSE-Strata-Pro-24 Study Material □ PSE-Strata-Pro-24 Valid Cram Materials □ New PSE-Strata-Pro-24 Test Sims □ Immediately open ► www.torrentvce.com □ and search for ► PSE-Strata-Pro-24 ◀ to obtain a free download □

□PSE-Strata-Pro-24 Test Prep

- edulingo.online, myportal.utt.edu.tt, myportal.utt.edu.tt, myportal.utt.edu.tt, myportal.utt.edu.tt, myportal.utt.edu.tt,
myportal.utt.edu.tt, myportal.utt.edu.tt, myportal.utt.edu.tt, myportal.utt.edu.tt, myportal.utt.edu.tt, myportal.utt.edu.tt,
myportal.utt.edu.tt, myportal.utt.edu.tt, myportal.utt.edu.tt, myportal.utt.edu.tt, myportal.utt.edu.tt, myportal.utt.edu.tt,
myportal.utt.edu.tt, myportal.utt.edu.tt, myportal.utt.edu.tt, myportal.utt.edu.tt, myportal.utt.edu.tt, myportal.utt.edu.tt,
myportal.utt.edu.tt, myportal.utt.edu.tt, myportal.utt.edu.tt, myportal.utt.edu.tt, myportal.utt.edu.tt, myportal.utt.edu.tt,
myportal.utt.edu.tt, myportal.utt.edu.tt, myportal.utt.edu.tt, myportal.utt.edu.tt, myportal.utt.edu.tt, www.stes.tyc.edu.tw,
www.stes.tyc.edu.tw, myportal.utt.edu.tt, myportal.utt.edu.tt, myportal.utt.edu.tt, myportal.utt.edu.tt, myportal.utt.edu.tt,
myportal.utt.edu.tt, myportal.utt.edu.tt, myportal.utt.edu.tt, myportal.utt.edu.tt, myportal.utt.edu.tt, myportal.utt.edu.tt,
myportal.utt.edu.tt, myportal.utt.edu.tt, myportal.utt.edu.tt, myportal.utt.edu.tt, myportal.utt.edu.tt, myportal.utt.edu.tt,
myportal.utt.edu.tt, myportal.utt.edu.tt, myportal.utt.edu.tt, tecnofuturo.online, Disposable vapes

DOWNLOAD the newest TestkingPass PSE-Strata-Pro-24 PDF dumps from Cloud Storage for free:
<https://drive.google.com/open?id=1ldAOsbz7-gIMxZvzcBwwIdOSGXL9JUu4>