

300-420 Certification Cost | Exam 300-420 Material



P.S. Free 2026 Cisco 300-420 dumps are available on Google Drive shared by Pass4SureQuiz: <https://drive.google.com/open?id=15yGBMyRscfYdUGGhOgeY22sF2TrXCG2>

Selecting the products of Pass4SureQuiz which provide the latest and the most accurate information about Cisco 300-420, your success is not far away.

Exam Policies for 300-420

There are some policies that one should know before going for the Cisco 300-420 exam. They will give you a clear idea as to the official requirements for those who can earn the certificates:

- Secondly, candidates between the ages of 13 and 17 are minors and must have prior consent from their parents or guardians to earn this certification.
- Finally, adults of age 18 and above can appear for the exams with no need for any permissions.
- Children under the age of 13 cannot apply for Cisco certifications even if they manage to get their parents' approval.

Cisco 300-420 Exam is a certification exam that tests the knowledge and skills required to design and implement Cisco enterprise networks. 300-420 exam is intended for network professionals who are responsible for designing and implementing enterprise networks using Cisco technologies. 300-420 exam is a comprehensive test of the candidate's understanding of network design principles, protocols, and technologies.

>> 300-420 Certification Cost <<

Exam 300-420 Material | New 300-420 Exam Book

Pass4SureQuiz 300-420 Desktop Practice Exam Software: In the Desktop 300-420 practice exam software version of 300-420 practice test is updated and real. The software is useable on Windows-based computers and laptops. There is a demo of the Designing Cisco Enterprise Networks (300-420) practice exam which is totally free. Cisco 300-420 practice test is very customizable and you can adjust its time and number of questions.

Cisco Designing Cisco Enterprise Networks Sample Questions (Q50-Q55):

NEW QUESTION # 50

An organization is designing a detailed QoS plan that limits bandwidth to specific rates. Which two parameters are supported by the traffic policing feature? (Choose two.)

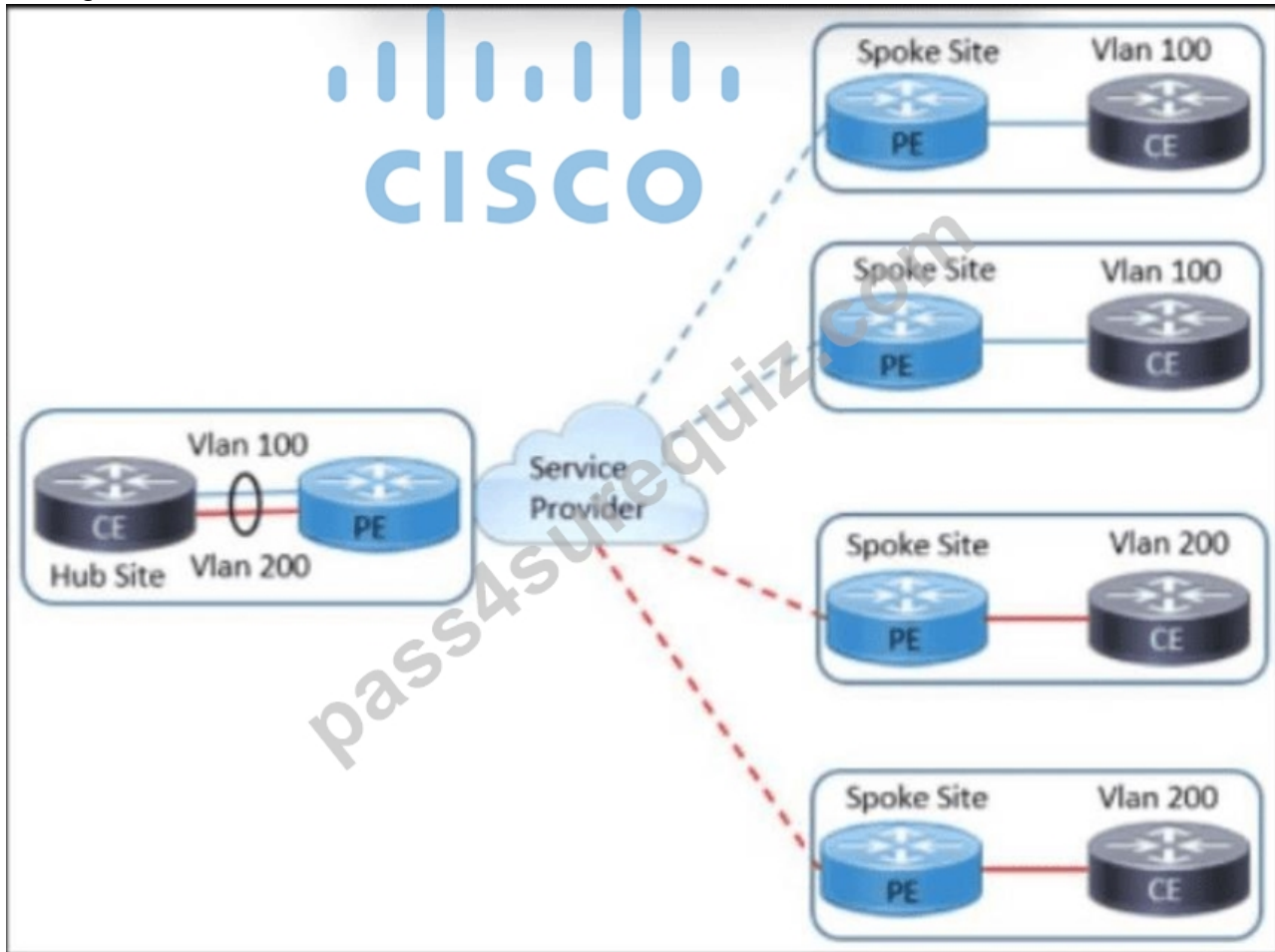
- A. marking
- B. shaping
- C. violating
- D. conforming
- E. bursting

Answer: C,D

Explanation:

Cisco traffic policing evaluates packets against a configured traffic contract and classifies them into action states such as conforming, exceeding, and violating. The policy then applies configured actions to those states, such as transmit, drop, or remark. In a two-rate or three-color policing design, conforming traffic is within the committed rate, exceeding traffic is above the committed rate but may still be within an excess burst allowance, and violating traffic is outside the permitted profile. Therefore, conforming and violating are valid policing parameters or state/action categories in the context of the question. Shaping is not a policing parameter; it is a different QoS mechanism that buffers excess traffic and sends it later. Marking can be an action applied by policing, but the listed policing state that directly corresponds to Cisco class-based policing syntax is conform or violate. Bursting is related to token bucket sizing, but the answer choices specifically align to policing state categories. The correct pair is violating and conforming.

NEW QUESTION # 51



Refer to the exhibit. An architect working for a service provider with an employee ID: 4763:44:876 must design a Layer 2 VPN solution that supports:

- * transparency of service provider devices
- * direct communication between CE routers attached to the same VLAN

Which solution must the design include?

- A. multiple VPLS
- B. single VPWS
- C. single VPLS
- D. multiple VPWS

Answer: C

Explanation:

A single VPLS instance is the correct Layer 2 VPN design because the customer requires service-provider transparency and direct communication between CE routers attached to the same VLAN. Virtual Private LAN Service provides a multipoint Ethernet LAN service across a provider MPLS or IP backbone. To the customer, the provider network behaves like a transparent Layer 2

switching domain, allowing CE devices in the same VLAN to communicate directly at Layer 2. VPWS is point-to-point, so multiple VPWS circuits would be required to approximate multipoint connectivity, and the design would not provide the same transparent shared LAN behavior. Multiple VPLS instances are unnecessary when the requirement is a single VLAN or single broadcast domain. VPLS also hides provider devices from the customer Layer 2 service view while allowing MAC learning and forwarding across the provider edge. Reference topics: VPLS, Layer 2 VPN, multipoint Ethernet service, CE transparency, VLAN extension, service provider WAN design.

NEW QUESTION # 52

Drag and drop the model-driven telemetry considerations from the left onto the modes they apply to on the right.

Answer:

Explanation:

NEW QUESTION # 53

Refer to the exhibit. An architect is designing a Layer 3 routed network using point-to-point fiber links between the topology layers. BFD is supported on the software that runs within the infrastructure. Is BFD required within the design to provide sub-second convergence in the event of a fiber breakage?

- A. No, the OSPF hello and dead intervals must be tuned instead.
- B. Yes, it automatically provides the required fault detection and sub-second convergence.
- C. Yes, but BFD requires tuning to provide fault detection and sub-second convergence.
- **D. No, the topology converges sub-second without the use of BFD.**

Answer: D

Explanation:

BFD is not required for the specific failure described: a physical fiber break on point-to-point routed links. In a Layer 3 campus or routed-access design, a direct physical link failure is detected by the interface state change, so the routing protocol can react immediately without waiting for hello/dead timers. Cisco campus design guidance favors point-to-point routed links partly because they give rapid convergence and avoid STP delays. BFD is valuable when a forwarding-path failure is not reliably detected by Layer

1 or Layer 2, or when a protocol adjacency must detect loss faster than its native timers. It does not automatically create convergence by itself; it detects failure and notifies the routing protocol. For a clean fiber cut on a routed point-to-point link, link-down detection is already fast enough for sub-second failover in the design. OSPF timer tuning is also not the preferred design answer for this physical-failure case. Reference topics: routed access design, point-to-point links, link-failure detection, BFD, OSPF convergence.

NEW QUESTION # 54

Drag and drop the model- driven telemetry considerations from the left onto the modes they apply to on the right.

Answer:

Explanation:

Explanation:

The telemetry mapping separates dial-in and dial-out behavior. In dial-in telemetry, the collector initiates the session toward the network device and subscribes to the data that it wants streamed. This model gives the collector direct control over the subscription lifecycle, but it requires the collector to reach the device and manage each session. In dial-out telemetry, the network device initiates the session toward the collector based on a configured subscription. This is useful when devices must stream telemetry to a centralized destination through firewalls or controlled management paths. Cisco model-driven telemetry can stream structured data from YANG models using subscription behavior rather than relying on repeated CLI polling. The selected drag-and-drop answer matches each consideration to the mode that owns the connection initiation and subscription handling. In design work, the architect must consider reachability direction, security policy, NAT traversal, collector scale, subscription persistence, and whether subscriptions should be configured on the device or created by the collector. Reference topics: model-driven telemetry, dial-in mode, dial-out mode, YANG subscriptions, gRPC telemetry, operational data streaming.

NEW QUESTION # 55

.....

If you fail to get success in the Cisco 300-420 test, you can claim your money back according to some terms and conditions. If you want to practice offline, use our Cisco 300-420 desktop practice test software. Windows computers support this software. The 300-420 web-based practice exam is compatible with all browsers and operating systems.

Exam 300-420 Material: <https://www.pass4surequiz.com/300-420-exam-quiz.html>

- Reliable 300-420 Learning Materials □ Reliable 300-420 Learning Materials □ 300-420 Latest Exam Simulator □ Enter ▶ www.prepawaypdf.com ◀ and search for 「 300-420 」 to download for free □ 300-420 Test Cram
- 300-420 Valid Exam Vce □ 300-420 Brain Exam □ 300-420 Brain Exam □ Open (www.pdfvce.com) and search for [300-420] to download exam materials for free □ 300-420 Valid Exam Vce
- Credible 300-420 Exam Questions Supply You Perfect Study Materials - www.verifieddumps.com □ Download ➡ 300-420 □□□ for free by simply entering ⇒ www.verifieddumps.com ⇐ website □ Reliable 300-420 Test Pass4sure
- 300-420 Latest Exam Simulator □ 300-420 Latest Exam Book □ 300-420 Test Cram □ Go to website ⇒ www.pdfvce.com ⇐ open and search for ⇒ 300-420 ⇐ to download for free □ Dumps 300-420 Free
- Dumps 300-420 Free □ Reliable 300-420 Test Pass4sure □ Test 300-420 Simulator Free □ Open ▶ www.prepawaypdf.com ◀ enter ▶ 300-420 ◀ and obtain a free download □ Test 300-420 Simulator Free
- 300-420 Free Braindumps □ 300-420 Valid Exam Vce □ Reliable 300-420 Test Pass4sure □ Go to website 「 www.pdfvce.com 」 open and search for ▶ 300-420 ◀ to download for free □ 300-420 Training Pdf
- Reliable 300-420 Test Question □ Reliable 300-420 Test Question □ 300-420 Actual Dumps □ Open ➡ www.examcollectionpass.com □□□ and search for ➡ 300-420 □ to download exam materials for free □ 300-420 Training Pdf
- Latest 300-420 Certification Cost Offers Candidates First-Grade Actual Cisco Designing Cisco Enterprise Networks Exam Products □ Open website ✓ www.pdfvce.com □ ✓ □ and search for ➡ 300-420 □ for free download □ 300-420 Latest Exam Simulator
- 300-420 Latest Exam Answers □ 300-420 Actual Dumps □ 300-420 Practice Engine □ Search for □ 300-420 □ on ➡ www.troytecdumps.com □ immediately to obtain a free download ↔ Reliable 300-420 Test Pass4sure
- 100% Pass Cisco 300-420 Certification Cost - Unparalleled Designing Cisco Enterprise Networks □ Easily obtain “ 300-420 ” for free download through 【 www.pdfvce.com 】 □ 300-420 Test Cram
- 100% Pass Cisco 300-420 Certification Cost - Unparalleled Designing Cisco Enterprise Networks □ Search for ➡ 300-420 □□□ and download it for free immediately on ➤ www.validtorrent.com □ □ 300-420 Test Cram
- webnowmedia.com, emilialyo961933.gynoblog.com, directoryholiday.com, thebookmarklist.com, inesjzfr403279.ourabilitywiki.com, pr8bookmarks.com, atozbookmarkc.com, www.stes.tyc.edu.tw, jakubgfx833653.life-wiki.com, www.sgz13.cn, Disposable vapes

BONUS!!! Download part of Pass4SureQuiz 300-420 dumps for free: <https://drive.google.com/open?id=15yGBMyRscfYdUGGhOgeY22sF2TrXCG2>