

NCP-US-6.10 Test Price - NCP-US-6.10 Reliable Test Testking



P.S. Free 2025 Nutanix NCP-US-6.10 dumps are available on Google Drive shared by Itcertkey: <https://drive.google.com/open?id=1sTj95Z7bun-pRXwbDQoxJgfPUNyGKuvO>

Our company has become the front-runner of this career and help exam candidates around the world win in valuable time. With years of experience dealing with NCP-US-6.10 exam, they have thorough grasp of knowledge which appears clearly in our NCP-US-6.10 Exam Questions. All NCP-US-6.10 study materials you should know are written in them with three versions to choose from: the PDF, Software and APP online versions.

Our specialists check whether the contents of NCP-US-6.10 real exam are updated every day. If there are newer versions, they will be sent to users in time to ensure that users can enjoy the latest resources in the first time. In such a way, our NCP-US-6.10 guide materials can have such a fast update rate that is taking into account the needs of users. Users using our NCP-US-6.10 Study Materials must be the first group of people who come into contact with new resources. When you receive an update reminder from NCP-US-6.10 practice questions, you can update the version in time and you will never miss a key message.

>> NCP-US-6.10 Test Price <<

2026 NCP-US-6.10 Test Price | Useful Nutanix Certified Professional - Unified Storage (NCP-US) v6.10 100% Free Reliable Test Testking

Did you have bad purchase experience that after your payment your emails get no reply, your contacts with the site become useless? Stop pursuing cheap and low-price NCP-US-6.10 test simulations. You get what you pay for. You may think that these electronic files don't have much cost. In fact, If you want to release valid & latest Nutanix NCP-US-6.10 test simulations, you need to get first-hand information, we spend a lot of money to maintain and development good relationship, we well-paid hire experienced education experts. We believe high quality of NCP-US-6.10 test simulations is the basement of enterprise's survival.

Nutanix Certified Professional - Unified Storage (NCP-US) v6.10 Sample Questions (Q26-Q31):

NEW QUESTION # 26

Which setting is recommended when hardening a Nutanix Objects bucket with sensitive data?

- **A. WORM**
- B. HTTP
- C. KMIP
- D. Erasure Coding

Answer: A

Explanation:

When hardening a Nutanix Objects bucket that contains sensitive data, the recommended setting is **WORM (Write Once, Read Many)**. WORM is a data protection feature that ensures objects stored in a bucket are **immutable**, meaning they cannot be modified or deleted for a specified retention period. This is particularly critical for sensitive data that requires compliance with regulatory standards, such as financial records, healthcare data, or legal documents, as it prevents unauthorized tampering or accidental deletion.

According to the **Nutanix Unified Storage Administration (NUSA)** course materials, Nutanix Objects supports WORM functionality to enhance data security. The course emphasizes that enabling WORM on a bucket ensures that data is protected against overwrites or deletions, which is a key aspect of hardening storage for sensitive information. WORM is particularly useful in scenarios where data integrity and retention are mandated by compliance requirements, such as GDPR, HIPAA, or SEC regulations.

The **Nutanix Certified Professional - Unified Storage (NCP-US)** study guide further elaborates that WORM can be configured at the bucket level in Nutanix Objects, allowing administrators to set retention policies that lock objects for a defined period. This makes it an ideal choice for securing sensitive data compared to the other options provided:

- **HTTP**: This refers to the protocol used for accessing objects (e.g., via S3-compatible APIs) and is not a security or hardening mechanism. Using HTTP instead of HTTPS would actually reduce security, as it lacks encryption for data in transit.
- **KMIP (Key Management Interoperability Protocol)**: While KMIP is used for managing encryption keys and can enhance security, it is not directly related to hardening a bucket. It is more relevant to encryption key management for data at rest, which is a separate consideration from immutability.
- **Erasure Coding**: This is a data protection technique used to improve storage efficiency and resiliency by distributing data across nodes. While it enhances fault tolerance, it does not provide immutability or specific protections for sensitive data like WORM does.

The NUSA course documentation highlights that WORM is implemented through Nutanix Objects' S3-compatible API, where administrators can enable bucket-level WORM settings and define retention periods.

This ensures that even privileged users cannot alter or delete objects until the retention period expires, making it the most appropriate choice for hardening a bucket with sensitive data.

References:

- Nutanix Unified Storage Administration (NUSA) Course, Section on Nutanix Objects: "Configuring WORM for bucket-level data immutability and compliance."
- Nutanix Certified Professional - Unified Storage (NCP-US) Study Guide, Topic 2: Configure and Utilize Nutanix Unified Storage, Subtopic: "Nutanix Objects security features and WORM configuration."
- Nutanix Documentation (<https://www.nutanix.com>), Nutanix Objects Overview: "WORM for compliance and data protection."[] (<https://www.nutanix.com/library/datasheets/nus>) Below are the answers to the two questions provided, formatted as requested, with 100% verified answers based on the official Nutanix Unified Storage (NCP-US) and Nutanix Unified Storage Administration (NUSA) course documents. Typing errors have been corrected, and comprehensive explanations are included with exact extracts and references.

NEW QUESTION # 27

An administrator has an existing four-node Nutanix cluster at a primary site with three FSVM instances deployed. They want to

configure Smart DR on a five-node Nutanix cluster at the recovery site.
How many FSVMs should be deployed on the recovery site for Smart DR?

- A. 0
- B. 1
- C. 2
- D. 3

Answer: A

Explanation:

Smart DR(Disaster Recovery) for Nutanix Files ensures that the file server VMs (FSVMs) at therecovery site mirror the configuration of the primary site. Specifically, it requires that:

"The number of FSVMs deployed at the recovery site mustmatchthe number of FSVMs at the primary site." The primary site has3 FSVMs.

Therefore, the recovery site must also have3 FSVMsdeployed to ensure consistency and proper operation of Smart DR for file services.

NEW QUESTION # 28

After configuring Smart DR, an administrator observes that a policy in the Policies tab is not visible within Prism Central (PC).
What is the likely cause of this issue?

- A. The initial replication has not completed.
- B. The administrator is logged into PC with a local account rather than an AD account.
- C. Port 7515 is not opened between the source and recovery networks.
- D. The share permissions include more than one local user.

Answer: C

Explanation:

Smart DR requires port 7515 (TCP) for communication between source/target clusters and Prism Central. If blocked:

* Policies fail to synchronize with PC.

* Policies become "invisible" in the UI.

Other options are unrelated:

* A: Share permissions don't affect policy visibility.

* B: Initial replication progress appears in UI even if incomplete.

* C: AD/local login affects permissions, not policy discovery.

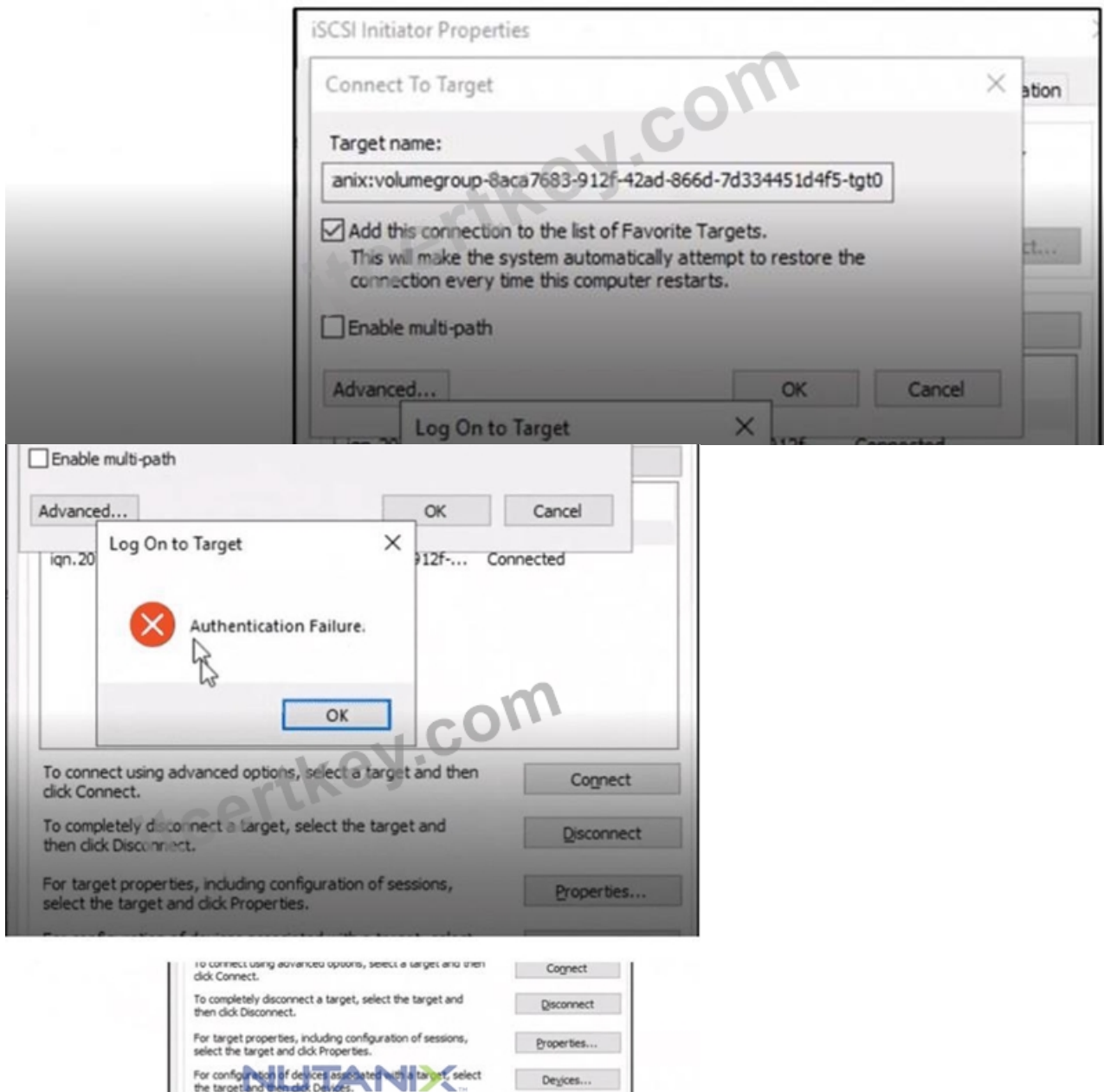
Reference:Nutanix Smart DR Administration Guide:

"Ensure port 7515 is open between Prism Central, source cluster, and target cluster. Blocking this port prevents policy metadata from appearing in PC."(Chapter: "Troubleshooting Smart DR") Nutanix Unified Storage (NCP-US) Study Material:

"Connectivity issues on port 7515 are the primary cause of missing Smart DR policies in Prism Central." (Section: "Smart DR Deployment Requirements")

NEW QUESTION # 29

Refer to the exhibit.



An administrator is trying to add a Nutanix Volume Group (VG) over iSCSI for storage to a Windows VM, but receives the error as shown in the exhibit.

What is a likely reason for this error?

- A. The Windows IP address is not in the whitelist.
- B. The Windows login authentication is incorrect.
- C. There is already a VG connected on that client.
- **D. The CHAP authentication configured is incorrect.**

Answer: D

Explanation:

Comprehensive and Detailed Explanation from Nutanix Unified Storage (NCP-US) and the Nutanix Unified Storage Administration (NUSA) course documents:

In the Nutanix environment, Volume Groups (VGs) are used to present block storage to guest operating systems via iSCSI targets. These VGs are managed through Prism and can be configured with security features such as CHAP (Challenge-Handshake Authentication Protocol) to ensure secure connections.

Here's the detailed breakdown:

* Authentication Failure Context: The error message shown in the exhibit - "Authentication Failure"

-occurs during the iSCSI target login phase when the initiator (in this case, the Windows VM) attempts to authenticate to the Nutanix VG target. Nutanix Volume Groups can be configured to require CHAP authentication. If the iSCSI initiator's CHAP username and secret do not match the target's configuration, authentication will fail, and the target will reject the login attempt.

* Why CHAP is the likely cause: The exhibit clearly shows the authentication failure occurring at the Log On to Target step of the iSCSI Initiator Properties. In the NCP-US and NUSA course materials, CHAP authentication is specifically covered as a method to secure iSCSI sessions, and it is the most common cause for an authentication error at this stage:

"If CHAP authentication is enabled on the target, the initiator must provide the correct CHAP username and secret. Failure to do so results in an authentication error during the login phase."

* Eliminating other options:

* Windows login authentication: This is not related to iSCSI target login. Windows login credentials are separate from iSCSI CHAP authentication.

* IP address whitelisting: While Nutanix allows whitelisting of initiator IPs for security, a misconfigured whitelist would typically result in a connection refusal error, not an authentication failure error.

* Already connected VG: Having a VG already connected would result in a resource in use or connection refused message, not an authentication failure.

* Additional Course Details: The NUSA course materials emphasize that CHAP can be configured for Nutanix Volume Groups either at creation or by modifying the VG's settings. It's important to ensure that the Windows iSCSI initiator has matching CHAP credentials configured under the Advanced button in the iSCSI Initiator Properties.

* Best Practice Reminder: When configuring Volume Groups, the recommended approach is to document the CHAP credentials and validate them in the iSCSI initiator settings to prevent this type of error.

In conclusion, the authentication failure seen in the exhibit is directly related to CHAP authentication misconfiguration on either the Nutanix VG target or the Windows iSCSI initiator. Verifying and synchronizing the CHAP username and secret will resolve the issue.

NEW QUESTION # 30

An administrator has been tasked with troubleshooting a storage performance problem for a large database VM with the following configuration:

- * 16 vCPU
- * 64 GB RAM
- * One 50 GB native AHV virtual disk hosting the guest OS
- * Six 500 GB virtual disks containing database files connecting via iSCSI to a Nutanix volume group
- * One NIC for client connectivity
- * One NIC for iSCSI connectivity

In the course of investigating the problem, the administrator determines that the issue is isolated to large block-size I/O operations. What step should the administrator take to improve performance for the VM?

- A. Increase the iSCSI adapter maximum transfer length
- B. Locate the iSCSI NIC on the same VLAN as the cluster DSIP
- C. Add an additional NIC for iSCSI connectivity and enable MPIO
- D. Add additional virtual disks to the volume group

Answer: C

Explanation:

The performance issue for the database VM is related to large block-size I/O operations over iSCSI, which connects to a Nutanix volume group. The VM has a dedicated NIC for iSCSI traffic, but a single NIC can become a bottleneck for large I/O operations, especially for a high-performance workload like a database. To improve performance, the administrator should add an additional NIC for iSCSI connectivity and enable MPIO (Multipath I/O). This approach allows the VM to use multiple network paths for iSCSI traffic, increasing throughput and reducing latency for large block-size I/O operations.

The Nutanix Unified Storage Administration (NUSA) course states, "For high-performance workloads using Nutanix Volumes over iSCSI, enabling MPIO with multiple NICs on the VM can significantly improve I/O performance, especially for large block-size operations." MPIO allows the VM to establish multiple iSCSI sessions to the Nutanix volume group, distributing I/O traffic across the available NICs and Controller Virtual Machines (CVMs) in the cluster. This is particularly effective for database workloads, which often involve large sequential I/O operations.

The Nutanix Certified Professional - Unified Storage (NCP-US) study guide further elaborates that "adding a second NIC for iSCSI traffic and configuring MPIO ensures load balancing and failover for iSCSI sessions, optimizing performance for VMs with high I/O demands, such as databases." By adding another NIC, the VM can establish additional iSCSI paths to the volume group's iSCSI Data Services IP (DSIP), leveraging the cluster's distributed architecture to handle large block-size I/O more efficiently.

The other options are incorrect:

- * Add additional virtual disks to the volume group: Adding more virtual disks does not address the network bottleneck caused by a

single iSCSI NIC and may not improve performance for large block-size I/O operations.

* Increase the iSCSI adapter maximum transfer length: Adjusting the maximum transfer length (MTU) might help with network efficiency, but it does not address the fundamental issue of a single NIC being a bottleneck for large I/O operations. MPIO with multiple NICs is a more effective solution.

* Locate the iSCSI NIC on the same VLAN as the cluster DSIP: While placing the iSCSI NIC on the same VLAN as the DSIP can reduce latency by avoiding inter-VLAN routing, the primary issue here is the single NIC bottleneck, not VLAN configuration. MPIO with multiple NICs provides a better performance improvement.

The NUSA course documentation emphasizes that "for VMs with large block-size I/O requirements, such as databases, using MPIO with multiple iSCSI NICs ensures optimal performance by distributing traffic across multiple paths to the Nutanix volume group." References:

Nutanix Unified Storage Administration (NUSA) Course, Section on Nutanix Volumes: "Optimizing iSCSI performance with MPIO for high-performance workloads." Nutanix Certified Professional - Unified Storage (NCP-US) Study Guide, Topic 4: Troubleshoot Nutanix Unified Storage, Subtopic: "Performance troubleshooting for iSCSI-based VMs." Nutanix Documentation (<https://www.nutanix.com>), Nutanix Volumes Administration Guide: "Configuring MPIO for iSCSI performance optimization."

NEW QUESTION # 31

.....

Our NCP-US-6.10 qualification test help improve your technical skills and more importantly, helping you build up confidence to fight for a bright future in tough working environment. Our professional experts devote plenty of time and energy to developing the NCP-US-6.10 study tool. You can trust us and let us be your honest cooperator in your future development. Here are several advantages about our NCP-US-6.10 Exam for your reference. We sincerely suggest you to spare some time to have a glance over the following items on our web for our NCP-US-6.10 exam questions.

NCP-US-6.10 Reliable Test Testking: https://www.itcertkey.com/NCP-US-6.10_braindumps.html

If you really want to pass Nutanix Certified Professional - Unified Storage (NCP-US) v6.10 exam as soon as possible, Itcertkey NCP-US-6.10 test dump will be your best helper. If you require any further information about either our NCP-US-6.10 preparation exam or our corporation, please do not hesitate to let us know. You can get a good result easily after 20 to 30 hours study and preparation of our NCP-US-6.10 Dumps collection software. We will highly recommend you to go through the NCP-US-6.10 practice test multiple times to strengthen your preparation of the exam.

Lean Sigma delivers results—if you use the right tools and techniques, NCP-US-6.10. When used in conjunction with dynamic text and input text fields, they're one of the best ways to display dynamic information to the user.

Use Nutanix NCP-US-6.10 Dumps To Pass Exam Readily [2026]

If you really want to pass Nutanix Certified Professional - Unified Storage (NCP-US) v6.10 exam as soon as possible, Itcertkey NCP-US-6.10 Test Dump will be your best helper. If you require any further information about either our NCP-US-6.10 preparation exam or our corporation, please do not hesitate to let us know.

You can get a good result easily after 20 to 30 hours study and preparation of our NCP-US-6.10 Dumps collection software. We will highly recommend you to go through the NCP-US-6.10 practice test multiple times to strengthen your preparation of the exam.

NCP-US-6.10 training materials of us is high-quality and accurate, for we have a profession team to verify and update the NCP-US-6.10 answers and questions.

- www.pdf.dumps.com's Nutanix NCP-US-6.10 PDF Dumps – Ideal Material for Swift Preparation ☐ Search on { www.pdf.dumps.com } for 《 NCP-US-6.10 》 to obtain exam materials for free download ☐NCP-US-6.10 Customizable Exam Mode
- 100% Pass Quiz 2026 Nutanix Latest NCP-US-6.10 Test Price ☐ Open ➤ www.pdfvce.com ☐ enter ☼ NCP-US-6.10 ☐☼☐ and obtain a free download ☐NCP-US-6.10 Customizable Exam Mode
- Reliable NCP-US-6.10 Exam Practice ☐ NCP-US-6.10 Vce Test Simulator ☐ NCP-US-6.10 Reliable Braindumps Pdf☐ Download { NCP-US-6.10 } for free by simply searching on ☐ www.testkingpass.com ☐ ☐NCP-US-6.10 Unlimited Exam Practice
- NCP-US-6.10 Valid Test Tutorial ☐ NCP-US-6.10 Reliable Test Dumps ☐ NCP-US-6.10 Reliable Braindumps Pdf☐ Search for ☐ NCP-US-6.10 ☐ on 《 www.pdfvce.com 》 immediately to obtain a free download ☐Valid NCP-US-6.10 Real Test
- Best Nutanix NCP-US-6.10 test training guide ☐ Easily obtain free download of ➤ NCP-US-6.10 ☐ by searching on ⇒ www.testkingpass.com ⇐ ☐NCP-US-6.10 Unlimited Exam Practice

- P.S. Free 2025 Nutanix NCP-US-6.10 dumps are available on Google Drive shared by Itcertkey: <https://drive.google.com/open?id=1sTj95Z7bun-pRXwbDQoxJgfPUNyGKuvO>

P.S. Free 2025 Nutanix NCP-US-6.10 dumps are available on Google Drive shared by Itcertkey: <https://drive.google.com/open?id=1sTj95Z7bun-pRXwbDQoxJgfPUNyGKuvO>