

100% Pass Quiz Accurate Microsoft - AZ-204 - Developing Solutions for Microsoft Azure Reliable Test Simulator



P.S. Free & New AZ-204 dumps are available on Google Drive shared by Dumpexams: https://drive.google.com/open?id=1BH_tXxF4MtoEN3v5rCgn3bF9BZe1W_R_

Almost everyone is trying to get Developing Solutions for Microsoft Azure (AZ-204) certification to update their CV or get the desired job. Nowadays, everyone is interested in taking the Developing Solutions for Microsoft Azure (AZ-204) exam because it has multiple benefits for the future. Every candidate faces just one problem, and that is not getting updated Developing Solutions for Microsoft Azure (AZ-204) practice questions.

Step 4: Take Practice Tests

Practice tests are a reliable preparation tool that should be the top priority of the candidates before attempting the exam. They enable the students to assess their level of knowledge and preparation for any test. This resource helps the learners get the benefits of improving their skills and knowledge in quick thinking and time management.

>> **AZ-204 Reliable Test Simulator** <<

AZ-204 Actual Torrent: Developing Solutions for Microsoft Azure - AZ-204 Pass-King Materials & AZ-204 Actual Exam

Experts at Dumpexams have also prepared Microsoft AZ-204 practice exam software for your self-assessment. This is especially handy for preparation and revision. You will be provided with an examination environment and you will be presented with actual AZ-204 Exam Questions. This sort of preparation method enhances your knowledge which is crucial to excelling in the actual Microsoft AZ-204 certification exam.

Microsoft AZ-204 (Developing Solutions for Microsoft Azure) Certification Exam is a high-level technical certification designed for developers who want to demonstrate their expertise in developing applications and solutions using Microsoft Azure. Developing Solutions for Microsoft Azure certification is designed for individuals who are familiar with Azure services and are looking to advance their skills in developing cloud-based applications.

Microsoft AZ-204 and Target Audience

The target candidates for the AZ-204 certification exam are Azure Developers. These professionals take part in various segments of Cloud development. This covers the stages from requirement definition to design, development, deployment, and maintenance. These Azure specialists collaborate with the clients, Cloud solution architects, Cloud DBAs, Cloud administrators, and other stakeholders to implement solutions.

Microsoft Developing Solutions for Microsoft Azure Sample Questions (Q395-Q400):

NEW QUESTION # 395

You need to add code at line AM10 of the application manifest to ensure that the requirement for manually reviewing content can be met.

How should you complete the code? To answer, select the appropriate options in the answer area.

NOTE: Each correct selection is worth one point.

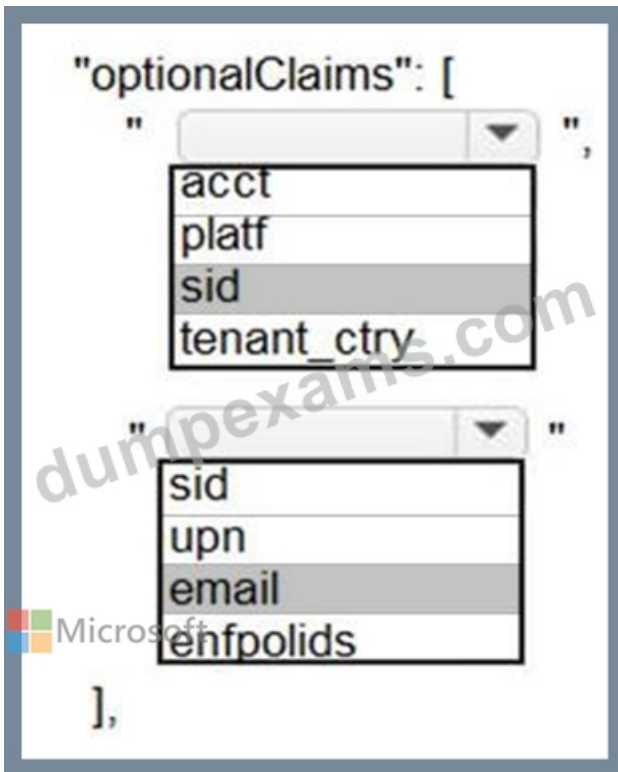
Microsoft
"optionalClaims": [
" [] ",
acct
platf
sid
tenant_ctry
"
" [] "
sid
upn
email
enfpolids
],

Answer:

Explanation:

Microsoft
"optionalClaims": [
" [] ",
acct
platf
sid
tenant_ctry
"
" [] "
sid
upn
email
enfpolids
],

Explanation



Box 1: sid

Sid: Session ID, used for per-session user sign-out. Personal and Azure AD accounts.

Scenario: Manual review

To review content, the user must authenticate to the website portion of the ContentAnalysisService using their Azure AD credentials.

The website is built using React and all pages and API endpoints require authentication.

In order to review content a user must be part of a ContentReviewer role.

Box 2: email

Scenario: All completed reviews must include the reviewer's email address for auditing purposes.

NEW QUESTION # 396

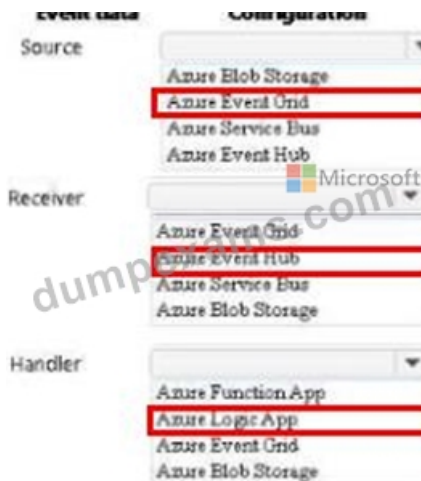
You need to implement event routing for retail store location data.

Which configuration should you use?



Answer:

Explanation:



NEW QUESTION # 397

You must ensure that the external party cannot access the data in the SSN column of the Person table.

Will each protection method meet the requirement? To answer, drag the appropriate responses to the correct protection methods. Each response may be used once, more than once, or not at all. You may need to drag the split bar between panes or scroll to view content.

NOTE: Each correct selection is worth one point.

Responses	Protection method	Response
<input type="checkbox"/> Yes	Enable AlwaysOn encryption.	<input type="checkbox"/>
<input type="checkbox"/> No	Set the column encryption setting to disabled.	<input type="checkbox"/>
	Assign users to the Public fixed database role.	<input type="checkbox"/>
	Store column encryption keys in the system catalog view in the database.	<input type="checkbox"/>

Answer:

Explanation:

Responses	Protection method	Response
<input checked="" type="checkbox"/> Yes	Enable AlwaysOn encryption.	<input checked="" type="checkbox"/> Yes
<input checked="" type="checkbox"/> No	Set the column encryption setting to disabled.	<input checked="" type="checkbox"/> No
	Assign users to the Public fixed database role.	<input type="checkbox"/> Yes
	Store column encryption keys in the system catalog view in the database.	<input checked="" type="checkbox"/> No

Explanation

Responses	Protection method	Response
<input type="checkbox"/> Yes	Enable AlwaysOn encryption.	<input type="checkbox"/> Yes
<input type="checkbox"/> No	Set the column encryption setting to disabled.	<input type="checkbox"/> No
	Assign users to the Public fixed database role.	<input type="checkbox"/> Yes
	Store column encryption keys in the system catalog view in the database.	<input type="checkbox"/> No

Box 1: Yes

You can configure Always Encrypted for individual database columns containing your sensitive data. When setting up encryption for a column, you specify the information about the encryption algorithm and cryptographic keys used to protect the data in the column.

Box 2: No

Box 3: Yes

In SQL Database, the VIEW permissions are not granted by default to the public fixed database role. This enables certain existing

legacy tools (using older versions of DacFx) to work properly. Consequently, to work with encrypted columns (even if not decrypting them) a database administrator must explicitly grant the two VIEW permissions.

Box 4: No

All cryptographic keys are stored in an Azure Key Vault.

References:

<https://docs.microsoft.com/en-us/sql/relational-databases/security/encryption/always-encrypted-database-engine>

NEW QUESTION # 398

Hotspot Question

You plan to deploy a web app to App Service on Linux. You create an App Service plan. You create and push a custom Docker image that contains the web app to Azure Container Registry.

You need to access the console logs generated from inside the container in real-time.

How should you complete the Azure CLI command? To answer, select the appropriate options in the answer area.

NOTE: Each correct selection is worth one point.

Answer Area

```
az webapp log  --name ContosoWeb --resource-group ContosoDevRG
```

filesystem

```
az  log  --name ContosoWeb --resource-group ContosoDevRG
```

Answer:

Explanation:

Answer Area

```
az webapp log  --name ContosoWeb --resource-group ContosoDevRG
```

filesystem

```
az  log  --name ContosoWeb --resource-group ContosoDevRG
```

Explanation:

Box 1: config

To Configure logging for a web app use the command:

az webapp log config

Box 2: --docker-container-logging

Syntax include:

az webapp log config [--docker-container-logging {filesystem, off}]

Box 3: webapp

To download a web app's log history as a zip file use the command:

az webapp log download

Box 4: download

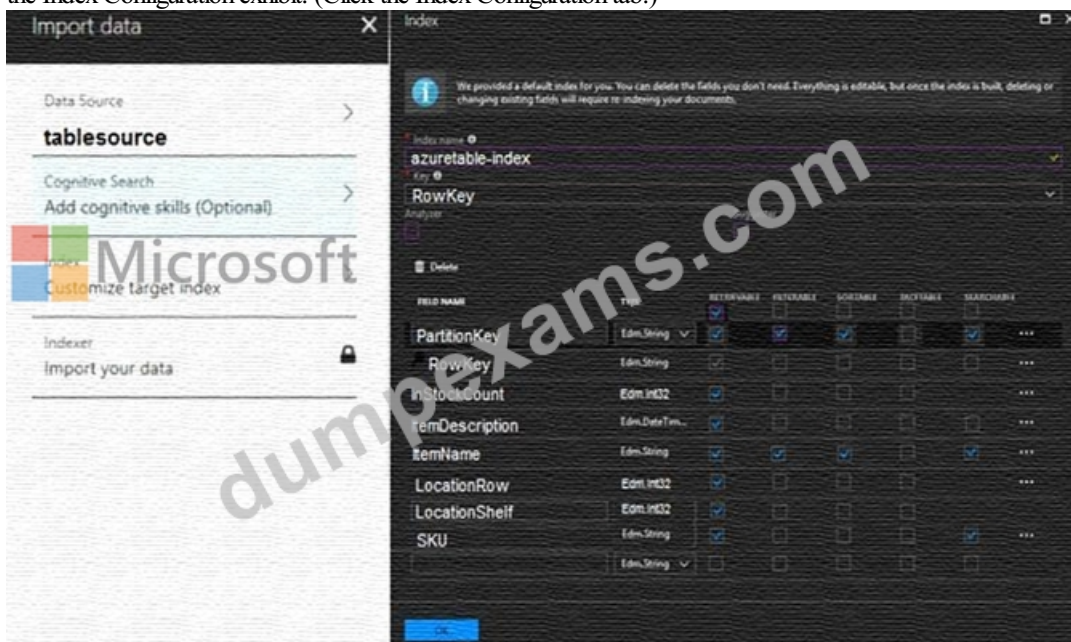
References:

<https://docs.microsoft.com/en-us/cli/azure/webapp/log>

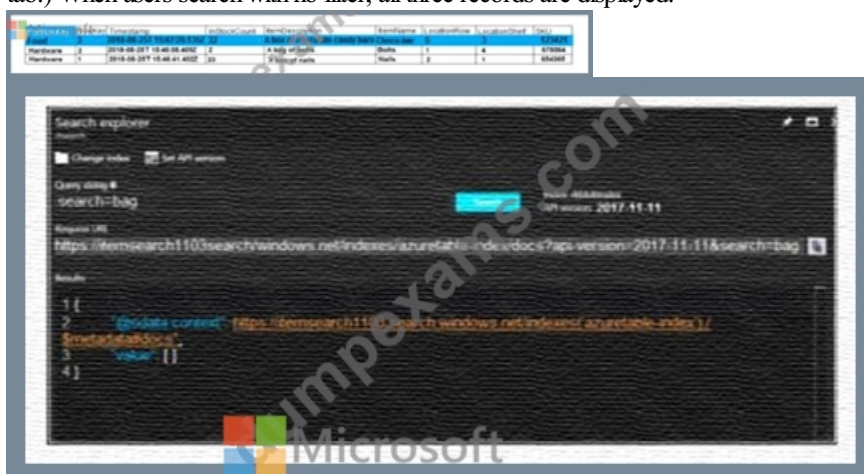
NEW QUESTION # 399

You are validating the configuration of an Azure Search indexer.

The service has been configured with an indexer that uses the Import Data option. The index is configured using options as shown in the Index Configuration exhibit. (Click the Index Configuration tab.)



You use an Azure table as the data source for the import operation. The table contains three records with item inventory data that matches the fields in the Storage data exhibit. These records were imported when the index was created. (Click the Storage Data tab.) When users search with no filter, all three records are displayed.



When users search for items by description, Search explorer returns no records. The Search Explorer exhibit shows the query and results for a test. In the test, a user is trying to search for all items in the table that have a description that contains the word bag. (Click the Search Explorer tab.) You need to resolve the issue.

For each of the following statements, select Yes if the statement is true. Otherwise, select No.

NOTE: Each correct selection is worth one point.

Microsoft		Yes	No
You can resolve the issue by recreating the search index with the same settings for all fields except ItemDescription. Select the SEARCHABLE option for this field	<input type="radio"/>	<input type="radio"/>	
You can resolve the issue by selecting the index, editing the ItemDescription field, and selecting the SEARCHABLE option for the field.	<input type="radio"/>	<input type="radio"/>	
You can resolve the issue by running the indexer.	<input type="radio"/>	<input type="radio"/>	
You can resolve the issue by changing the query string in Search explorer to <code>bag of</code> to return the correct results	<input type="radio"/>	<input type="radio"/>	

Answer:

Explanation:

Microsoft		Yes	No
You can resolve the issue by recreating the search index with the same settings for all fields except ItemDescription. Select the SEARCHABLE option for this field	<input checked="" type="radio"/>	<input type="radio"/>	
You can resolve the issue by selecting the index, editing the ItemDescription field, and selecting the SEARCHABLE option for the field.	<input type="radio"/>	<input checked="" type="radio"/>	
You can resolve the issue by running the indexer.	<input checked="" type="radio"/>	<input type="radio"/>	
You can resolve the issue by changing the query string in Search explorer to <code>bag of</code> to return the correct results	<input type="radio"/>	<input checked="" type="radio"/>	

Explanation

Microsoft		Yes	No
You can resolve the issue by recreating the search index with the same settings for all fields except ItemDescription. Select the SEARCHABLE option for this field	<input type="radio"/>	<input type="radio"/>	
You can resolve the issue by selecting the index, editing the ItemDescription field, and selecting the SEARCHABLE option for the field.	<input type="radio"/>	<input checked="" type="radio"/>	
You can resolve the issue by running the indexer.	<input checked="" type="radio"/>	<input type="radio"/>	
You can resolve the issue by changing the query string in Search explorer to <code>bag of</code> to return the correct results	<input type="radio"/>	<input checked="" type="radio"/>	

Box 1: Yes

The ItemDescription field in not searchable.

Box 2: No

The ItemDescription field in not searchable, but we would need to recreate the index.

Box 3: Yes

An indexer in Azure Search is a crawler that extracts searchable data and metadata from an external Azure data source and populates an index based on field-to-field mappings between the index and your data source.

This approach is sometimes referred to as a 'pull model' because the service pulls data in without you having to write any code that adds data to an index.

Box 4: No

References:

<https://docs.microsoft.com/en-us/azure/search/search-what-is-an-index>

<https://docs.microsoft.com/en-us/azure/search/search-indexer-overview>

NEW QUESTION # 400

.....

AZ-204 Free Brain Dumps: <https://www.dumpexams.com/AZ-204-real-answers.html>

- New AZ-204 Test Preparation AZ-204 Practice Test AZ-204 Valid Test Online Download AZ-204 for free by simply searching on \Rightarrow www.vce4dumps.com \Leftarrow Vce AZ-204 Torrent

