

CompTIA 220-1101 Reliable Exam Pattern | Study 220-1101 Demo



P.S. Free & New 220-1101 dumps are available on Google Drive shared by ITExamDownload: <https://drive.google.com/open?id=12kKLarqO4rkgyGSnRWoH0ClvV0ZuX6>

The client can try out and download our 220-1101 training materials freely before their purchase so as to have an understanding of our product and then decide whether to buy them or not. The website pages of our product provide the details of our 220-1101 learning questions. You can see the demos which are part of the all titles selected from the test bank and the forms of the questions and answers and know the form of our software on the website pages of our 220-1101 study materials.

The CompTIA 220-1101 exam includes a wide range of topics, including hardware, software, networking, and troubleshooting. It covers the basics of computer systems, including installation, configuration, and maintenance. 220-1101 exam also covers the fundamentals of networking, including protocols, IP addressing, and network devices. Additionally, it covers the basics of security, including malware, phishing, and social engineering.

To prepare for the exam, candidates can take advantage of various resources such as study guides, practice exams, and online courses. They can also gain hands-on experience through internships, apprenticeships, or working in an IT environment. 220-1101 Exam is available in multiple languages, including English, German, Japanese, Portuguese, and Spanish.

>> **CompTIA 220-1101 Reliable Exam Pattern** <<

Study CompTIA 220-1101 Demo - 220-1101 Sure Pass

If you're still learning from the traditional old ways and silently waiting for the test to come, you should be awake and ready to take the exam in a different way. Study our 220-1101 training materials to write "test data" is the most suitable for your choice, after recent years show that the effect of our 220-1101 Guide Torrent has become a secret weapon of the examinee through qualification examination, a lot of the users of our 220-1101 guide torrent can get unexpected results in the examination. Now, I will briefly introduce some details about our 220-1101 guide torrent for your reference.

CompTIA A+ Certification Exam: Core 1 (220-1101) covers a wide range of topics, including hardware, networking, mobile devices, virtualization and cloud computing, and troubleshooting. 220-1101 exam is designed to test the candidate's knowledge and skills in installing, configuring, and maintaining computer hardware and software. 220-1101 Exam also covers the basic principles of

networking, including TCP/IP, DNS, DHCP, and wireless networking. Additionally, the exam covers the latest trends in technology, such as virtualization and cloud computing.

CompTIA A+ Certification Exam: Core 1 Sample Questions (Q19-Q24):

NEW QUESTION # 19

A technician is troubleshooting a recently installed printer that is leaving multiple lines and streaks on print jobs. Which of the following should the technician replace first?

- **A. Toner**
- B. Rollers
- C. Drum
- D. Fuser

Answer: A

Explanation:

Streaks and multiple lines on print jobs are commonly caused by an issue with the toner cartridge, such as a damaged or improperly installed cartridge. The technician should replace the toner first as it is the most likely and simplest component to check.

* Why Not A (Rollers): Rollers primarily handle paper feeding and are less likely to cause streaking.

* Why Not B (Drum): While the drum can cause similar issues, the toner cartridge is easier to replace and should be checked first.

* Why Not D (Fuser): The fuser bonds toner to the paper, but it typically causes smudging rather than streaking.

CompTIA A+ Exam Reference: Core 2 (220-1102), Section 4.6, printer troubleshooting.

NEW QUESTION # 20

A technician is troubleshooting poor printing quality on an inkjet printer. The pages have white lines running through the text and graphics. Which of the following is the most likely cause?

- A. Poor quality paper
- B. Faulty ink cartridges
- C. Worn out rollers
- **D. Clogged printhead**

Answer: D

Explanation:

White lines running through text and graphics in printouts from an inkjet printer are commonly caused by clogged printheads. When the printhead nozzles are clogged, they cannot deliver ink properly to the paper, resulting in white lines where ink should have been deposited. Worn-out rollers, faulty ink cartridges, and poor-quality paper can cause other printing issues but are less likely to cause white lines in the printed output.

References:

* CompTIA A+ Core 1 Exam Objectives Section 3.7: Given a scenario, install and replace printer consumables.

NEW QUESTION # 21

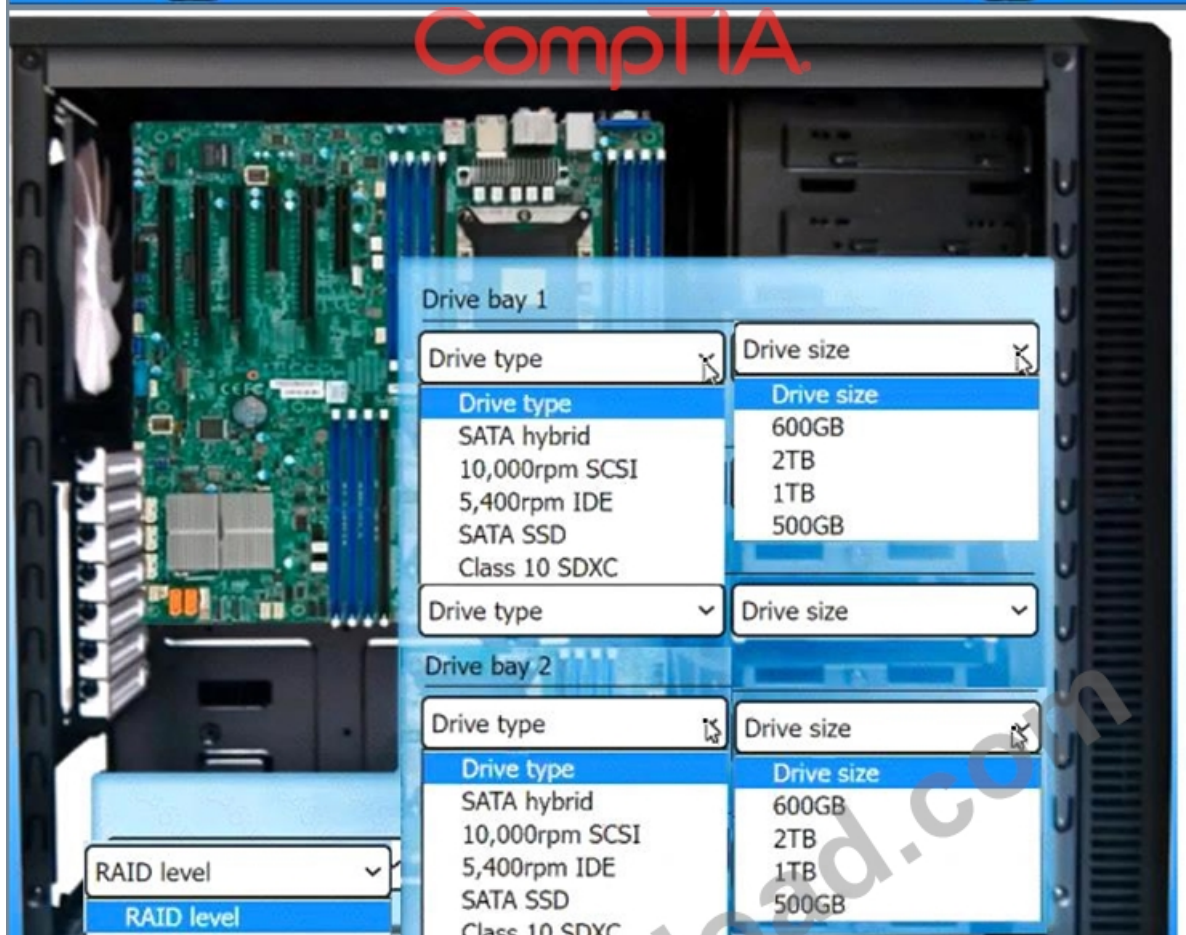
A technician is setting up a video-editing workstation and the operating system is already installed on an internal M.2 drive.

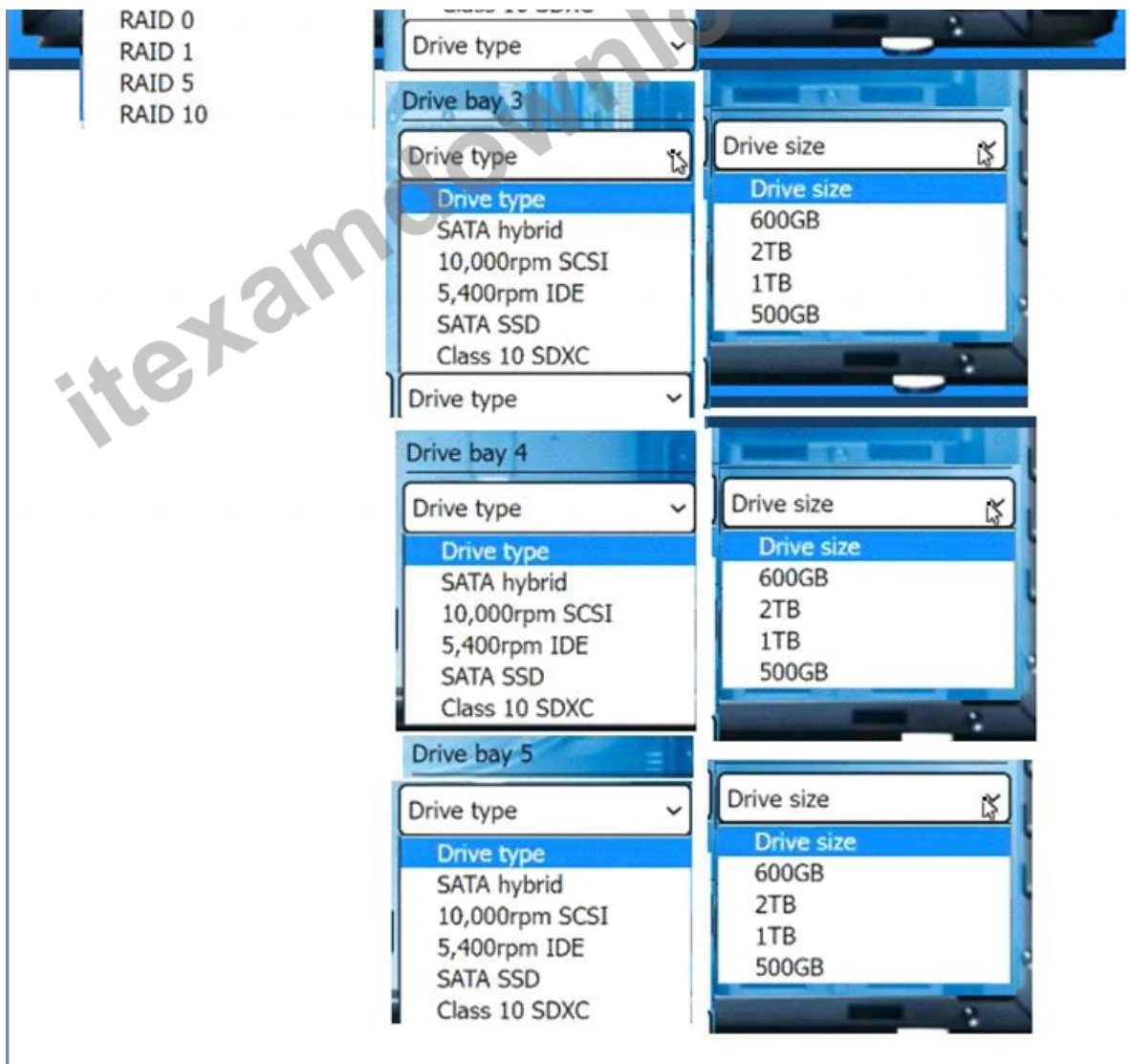
The new workstation must meet the following requirements:

- . Be able to edit files at the fastest speed
- . Allow for disk failure without any downtime
- Have 2TB of usable space
- . Ensure the most robust fault tolerance

INSTRUCTIONS

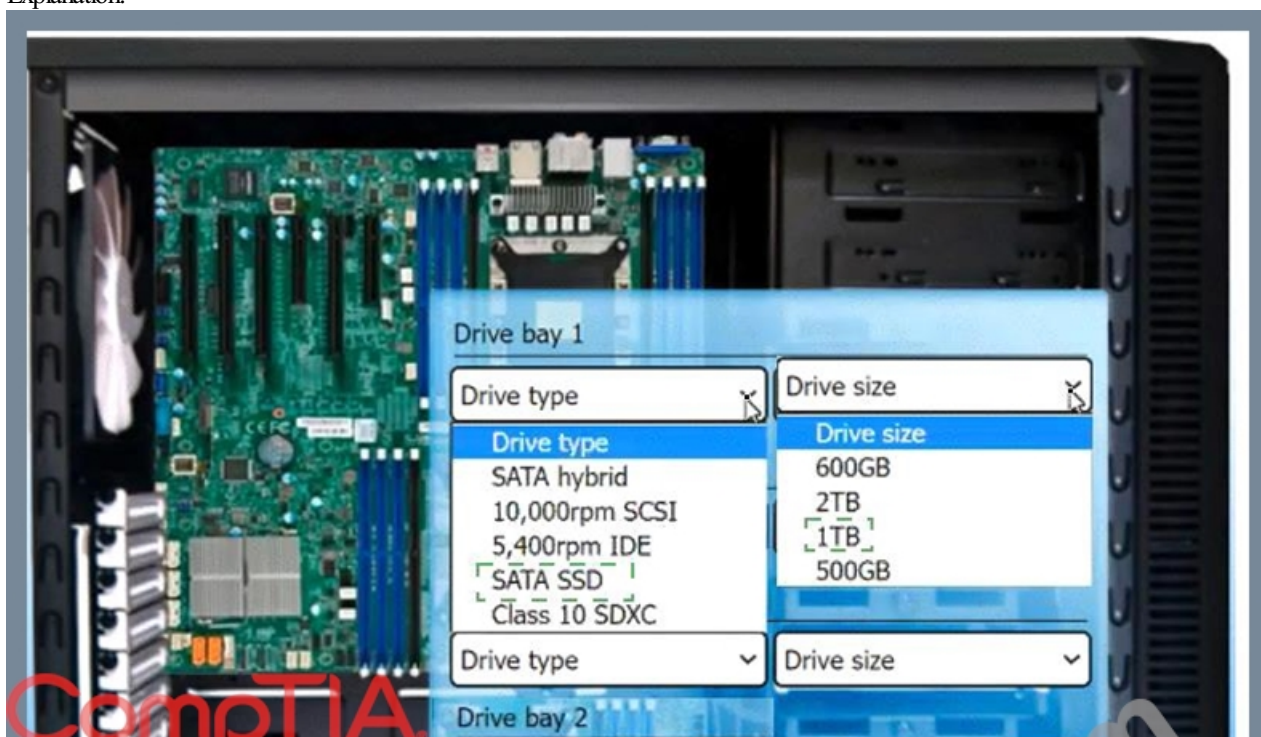
Use the drop-down menus to select the appropriate RAID level, drive types, and drive sizes based on the requirements above. For each drive type that is selected, a corresponding drive size must also be selected.

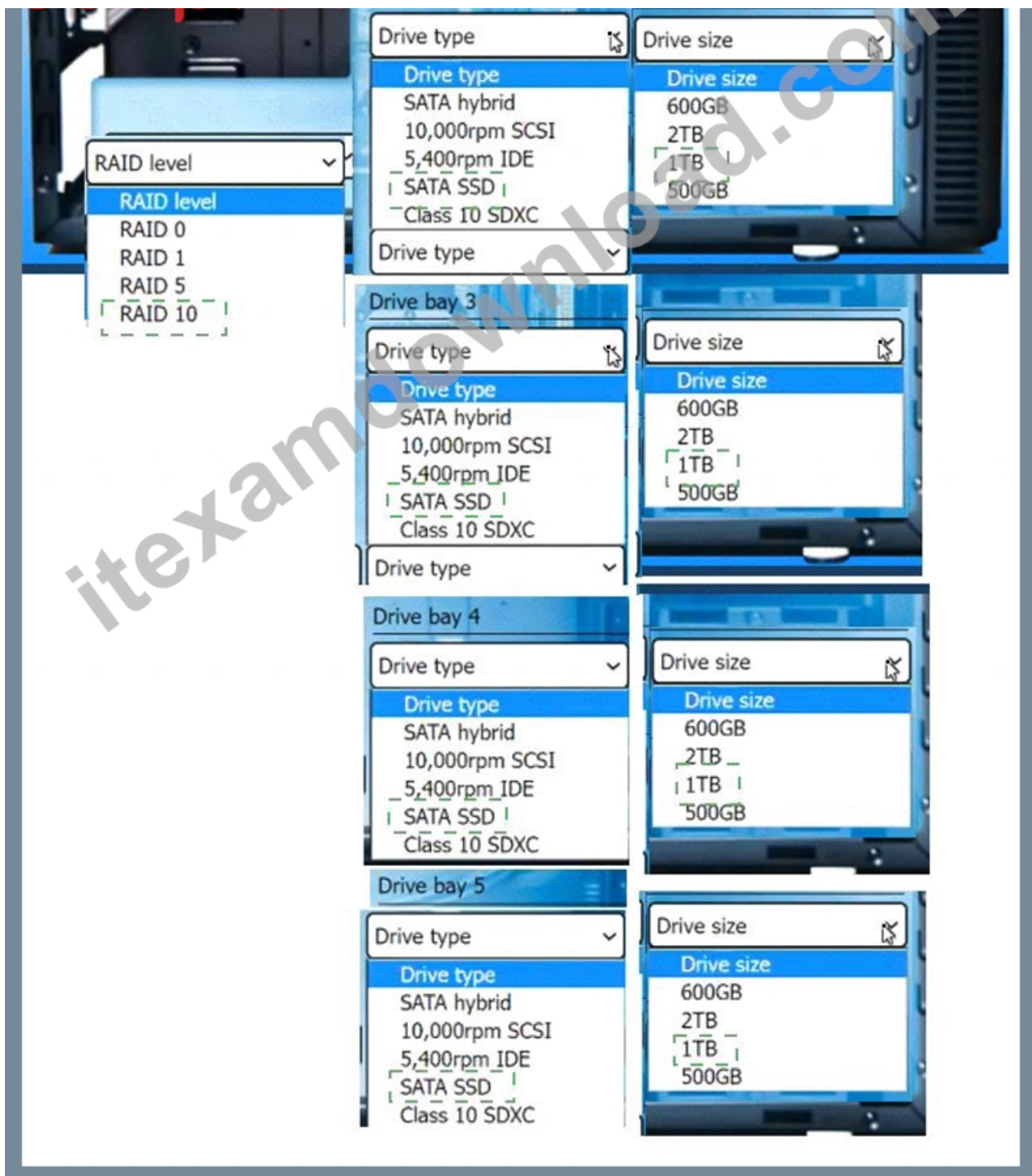




Answer:

Explanation:





Explanation

Based on the requirements, the best option for the video-editing workstation is to use RAID 10 with four SATA SSDs of 1TB each. This configuration will meet the following requirements:

Be able to edit files at the fastest speed: RAID 10 combines the advantages of RAID 0 and RAID 1, which are striping and mirroring, respectively. Striping can increase the data transfer rate by using multiple disks in parallel, while mirroring can provide redundancy and reliability by duplicating the data on another set of disks. SATA SSDs are also faster than HDDs or SSHDs, as they use flash memory instead of spinning disks, and they can offer lower latency, higher IOPS, and less noise and heat.

Allow for disk failure without any downtime: RAID 10 can withstand up to two disk failures, as long as they are not in the same mirrored pair. If one disk fails, the data can be read from or written to the other disk in the same pair, without affecting the performance or availability of the array. The failed disk can be replaced and rebuilt without interrupting the operation of the workstation.

Have 2TB of usable space: RAID 10 uses half of the total disk capacity for mirroring, so the usable space is equal to the size of two disks. By using four SATA SSDs of 1TB each, the total disk capacity is 4TB, and the usable space is 2TB, which meets the requirement.

Ensure the most robust fault tolerance: RAID 10 offers the highest level of fault tolerance among the standard RAID levels, as it can survive multiple disk failures and provide fast recovery. RAID 10 also has a low overhead, as it does not use parity or checksums,

which can slow down the write performance or increase the complexity of the array.
Therefore, the technician should select the following options from the drop-down menus:

RAID level: RAID 10
Drive type 1: SATA SSD
Drive size 1: 1TB
Drive type 2: SATA SSD
Drive size 2: 1TB
Drive type 3: SATA SSD
Drive size 3: 1TB
Drive type 4: SATA SSD
Drive size 4: 1TB
Drive type 5: SATA SSD
Drive size 5: 1TB

NEW QUESTION # 22

A technician replaces a laptop hard drive with an M.2 SSD. When the technician reboots the laptop, the laptop does not detect the SSD. Which of the following should the technician configure for the system?

- A. TPM
- B. HSM
- C. UEFI settings
- D. Boot options

Answer: C

Explanation:

UEFI stands for Unified Extensible Firmware Interface, and it is a type of firmware that controls the boot process of a computer. UEFI settings allow the technician to configure various aspects of the boot process, such as the boot order, the boot mode, and the security options. If the technician replaces a laptop hard drive with an M.2 SSD, they may need to adjust the UEFI settings to enable the system to detect and boot from the new drive.

NEW QUESTION # 23

A customer reports that a text-only document prints with unrecognizable characters. The print preview correctly displays the document. Which of the following is the most likely cause of the issue?

- A. Bad toner cartridge
- B. Incorrect driver
- C. Outdated firmware
- D. Corrupted document file

Answer: B

NEW QUESTION # 24

.....

Study 220-1101 Demo: <https://www.itexamdownload.com/220-1101-valid-questions.html>

- www.prepawaypdf.com CompTIA 220-1101 PDF Questions and Practice Test Software □ Search for ➡ 220-1101 □ and download it for free immediately on ▷ www.prepawaypdf.com ◁ □ 220-1101 Best Practice
- Pdfvce CompTIA 220-1101 PDF Questions and Practice Test Software □ Open “ www.pdfvce.com ” and search for [220-1101] to download exam materials for free □ 220-1101 Answers Real Questions
- Maximize Your Chances of Getting CompTIA 220-1101 Exam Questions □ The page for free download of [220-1101] on 《 www.practicevce.com 》 will open immediately □ Popular 220-1101 Exams
- 220-1101 exams cram PDF, CompTIA 220-1101 dumps PDF files □ Go to website ➡ www.pdfvce.com □ open and search for ⇒ 220-1101 ⇐ to download for free □ 220-1101 Latest Test Question
- Valid 220-1101 Exam Materials □ 220-1101 Latest Test Question □ Valid 220-1101 Exam Materials □ Open website “ www.examcollectionpass.com ” and search for ▷ 220-1101 ◁ for free download □ 220-1101 Pdf Exam Dump

- Maximize Your Chances of Getting CompTIA 220-1101 Exam Questions ☐ Search for ✓ 220-1101 ☐ ✓ ☐ and obtain a free download on (www.pdfvce.com) ☐ Valid 220-1101 Exam Materials
- 220-1101 Best Practice ☐ Popular 220-1101 Exams ☐ 220-1101 Reliable Test Book ☐ The page for free download of ⇒ 220-1101 ⇐ on ➡ www.prep4sures.top ☐ will open immediately ☐ 220-1101 Best Practice
- CompTIA 220-1101 Reliable Exam Pattern: CompTIA A+ Certification Exam: Core 1 - Pdfvce 10 Years of Excellence ☐ Download ⇒ 220-1101 ⇐ for free by simply entering 「 www.pdfvce.com 」 website ☐ Latest 220-1101 Test Notes
- CompTIA 220-1101 Exam Questions 2026 - Instant Access, just revised ☐ Immediately open ➡ www.prep4sures.top ☐ ☐ and search for > 220-1101 < to obtain a free download ☐ Braindumps 220-1101 Pdf
- 220-1101 Reliable Exam Blueprint ☐ Popular 220-1101 Exams ☐ 220-1101 Reliable Exam Blueprint ☐ Open [www.pdfvce.com] enter ✓ 220-1101 ☐ ✓ ☐ and obtain a free download ☐ 220-1101 Sample Test Online
- 220-1101 Best Practice ☐ 220-1101 Guaranteed Success ☐ 220-1101 Best Practice ☐ Download ➡ 220-1101 ☐ for free by simply searching on ➡ www.exam4labs.com ☐ ☐ ☐ Exam 220-1101 Study Solutions
- www.connectantigua.com, www.stes.tyc.edu.tw, study.stcs.edu.np, www.stes.tyc.edu.tw, backloggd.com, www.stes.tyc.edu.tw, www.stes.tyc.edu.tw, www.stes.tyc.edu.tw, myportal.utt.edu.tt, myportal.utt.edu.tt, myportal.utt.edu.tt, myportal.utt.edu.tt, myportal.utt.edu.tt, myportal.utt.edu.tt, myportal.utt.edu.tt, myportal.utt.edu.tt, www.stes.tyc.edu.tw, Disposable vapes

BTW, DOWNLOAD part of ITExamDownload 220-1101 dumps from Cloud Storage: <https://drive.google.com/open?id=12kKLarqO4rkgyGSnRWoH0ChcV0ZuX6>