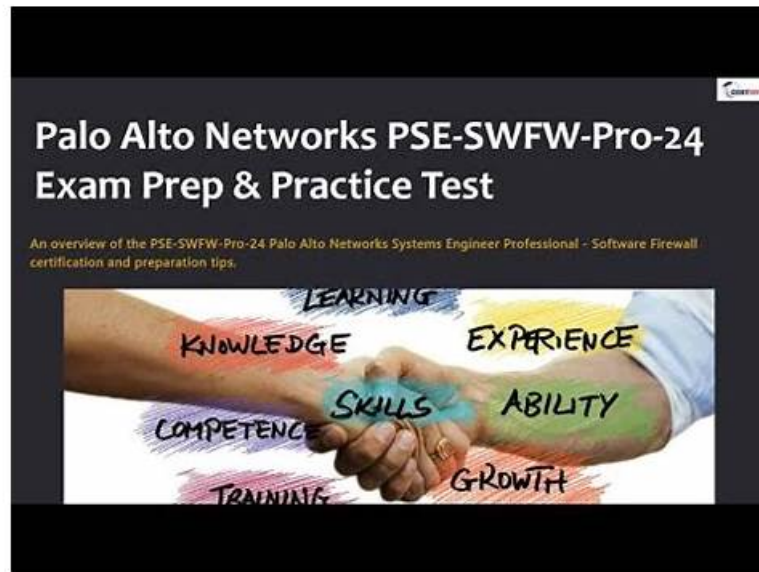


2026 Palo Alto Networks Valid Test PSE-SFW-Pro-24 Engine



P.S. Free & New PSE-SFW-Pro-24 dumps are available on Google Drive shared by VCEdumps:
https://drive.google.com/open?id=1kscP0tV_s75rSIjDuEMB-hVCyl5T0JE

Windows computers support the desktop practice test software. VCEdumps has a complete support team to fix issues of Palo Alto Networks PSE-SFW-Pro-24 practice test software users. VCEdumps practice tests (desktop and web-based) produce score report at the end of each attempt. So, that users get awareness of their Palo Alto Networks Systems Engineer Professional - Software Firewall (PSE-SFW-Pro-24) preparation status and remove their mistakes.

As job seekers looking for the turning point of their lives, it is widely known that the workers of recruitment is like choosing apples--viewing resumes is liking picking up apples, employers can decide whether candidates are qualified by the PSE-SFW-Pro-24 appearances, or in other words, candidates' educational background and relating PSE-SFW-Pro-24 professional skills. Knowledge about a person and is indispensable in recruitment. That is to say, for those who are without good educational background, only by paying efforts to get an acknowledged PSE-SFW-Pro-24 Certification, can they become popular employees. So for you, the PSE-SFW-Pro-24 latest braindumps complied by our company can offer you the best help.

>> Test PSE-SFW-Pro-24 Engine <<

Palo Alto Networks PSE-SFW-Pro-24 PDF Questions - Most Effective Exam Preparation Method

To give you an idea about the top features of VCEdumps Palo Alto Networks Systems Engineer Professional - Software Firewall (PSE-SFW-Pro-24) exam questions, a free demo of VCEdumps Palo Alto Networks Systems Engineer Professional - Software Firewall (PSE-SFW-Pro-24) exam dumps is being offered free of cost. Just download VCEdumps Palo Alto Networks Systems Engineer Professional - Software Firewall (PSE-SFW-Pro-24) exam questions demo and checks out the top features of VCEdumps Palo Alto Networks Systems Engineer Professional - Software Firewall (PSE-SFW-Pro-24) exam dumps. If you feel that VCEdumps Palo Alto Networks PSE-SFW-Pro-24 exam questions work for you then buy the full and final VCEdumps Palo Alto Networks Systems Engineer Professional - Software Firewall (PSE-SFW-Pro-24) exam dumps at an affordable price and start Palo Alto Networks Systems Engineer Professional - Software Firewall (PSE-SFW-Pro-24) exam preparation.

Palo Alto Networks Systems Engineer Professional - Software Firewall Sample Questions (Q53-Q58):

NEW QUESTION # 53

Which three statements describe the functionality of Panorama plugins? (Choose three.)

- A. Limited to one plugin installation on Panorama
- B. May be installed on Panorama from the Palo Alto Networks customer support portal
- C. Expands capabilities of hardware and software NGFWs
- D. Complies with third-party product/platform integration and configuration with NGFWs
- E. Supports other Palo Alto Networks products and configurations with NGFWs

Answer: B,C,E

Explanation:

Panorama plugins extend its functionality.

* Why B, C, and E are correct:

* B. Supports other Palo Alto Networks products and configurations with NGFWs: Plugins enable Panorama to manage and integrate with other Palo Alto Networks products (e.g., VM-Series, Prisma Access) and specific configurations.

* C. May be installed on Panorama from the Palo Alto Networks customer support portal:

Plugins are downloaded from the support portal and installed on Panorama.

* E. Expands capabilities of hardware and software NGFWs: Plugins add new features and functionalities to the managed firewalls through Panorama.

* Why A and D are incorrect:

* A. Limited to one plugin installation on Panorama: Panorama supports the installation of multiple plugins to extend its functionality in various ways.

* D. Complies with third-party product/platform integration and configuration with NGFWs:

While some plugins might facilitate integration with third-party tools, the primary focus of Panorama plugins is on Palo Alto Networks products and features. Direct third-party product integration is not a core function of plugins.

Palo Alto Networks References: The Panorama Administrator's Guide contains information about plugin management, installation, and their purpose in extending Panorama's capabilities.

NEW QUESTION # 54

What are three components of Cloud NGFW for AWS? (Choose three.)

- A. Cloud NGFW Resource
- B. Local or Global Rulestacks
- C. Cloud NGFW Tenant
- D. Amazon S3 bucket
- E. Cloud NGFW Inspector

Answer: A,B,E

Explanation:

Cloud NGFW for AWS is a Next-Generation Firewall as a Service. Its key components work together to provide comprehensive network security.

A . Cloud NGFW Resource: This represents the actual deployed firewall instance within your AWS environment. It's the core processing engine that inspects and secures network traffic. The Cloud NGFW resource is deployed in a VPC and associated with subnets, enabling traffic inspection between VPCs, subnets, and to/from the internet.

B . Local or Global Rulestacks: These define the security policies that govern traffic inspection. Rulestacks contain rules that match traffic based on various criteria (e.g., source/destination IP, port, application) and specify the action to take (e.g., allow, deny, inspect). Local Rulestacks are specific to a single Cloud NGFW resource, while Global Rulestacks can be shared across multiple Cloud NGFW resources for consistent policy enforcement.

C . Cloud NGFW Inspector: The Cloud NGFW Inspector is the core component performing the deep packet inspection and applying security policies. It resides within the Cloud NGFW Resource and analyzes network traffic based on the configured rulestacks. It provides advanced threat prevention capabilities, including intrusion prevention (IPS), malware detection, and URL filtering.

D . Amazon S3 bucket: While S3 buckets can be used for logging and storing configuration backups in some firewall deployments, they are not a core component of the Cloud NGFW architecture itself. Cloud NGFW uses its own logging and management infrastructure.

E . Cloud NGFW Tenant: The term "Tenant" is usually associated with multi-tenant architectures where resources are shared among multiple customers. While Palo Alto Networks provides a managed service for Cloud NGFW, the deployment within your AWS account is dedicated and not considered a tenant in the traditional multi-tenant sense. The management of the firewall is done through Panorama or Cloud Management.

Reference:

While direct, concise documentation specifically listing these three components in this exact format is difficult to pinpoint in a single

document, the Palo Alto Networks documentation consistently describes these elements as integral. The concepts are spread across multiple documents and are best understood in context of the overall Cloud NGFW architecture:

Cloud NGFW for AWS Administration Guide: This is the primary resource for understanding Cloud NGFW. It details deployment, configuration, and management, covering the roles of the Cloud NGFW resource, rulestacks, and the underlying inspection engine. You can find this documentation on the Palo Alto Networks support portal by searching for "Cloud NGFW for AWS Administration Guide".

NEW QUESTION # 55

Which three tools are available to customers to facilitate the simplified and/or best-practice configuration of Palo Alto Networks Next-Generation Firewalls (NGFWs)? (Choose three.)

- A. Policy Optimizer to help identify and recommend Layer 7 policy changes
- B. Day 1 Configuration through the customer support portal (CSP)
- C. Best Practice Assessment (BPA) in Strata Cloud Manager (SCM)
- D. Expedition to enable the creation of custom threat signatures
- E. Telemetry to ensure that Palo Alto Networks has full visibility into the firewall configuration

Answer: A,B,C

Explanation:

Comprehensive and Detailed In-Depth Step-by-Step Explanation: Palo Alto Networks provides tools to simplify configuration and ensure best practices for Next-Generation Firewalls (NGFWs) like VM-Series, CN-Series, and Cloud NGFW. The Palo Alto Networks Systems Engineer Professional - Software Firewall documentation outlines these tools, focusing on ease of use, optimization, and security.

* Policy Optimizer to help identify and recommend Layer 7 policy changes (Option A): Policy Optimizer, available in PAN-OS or Panorama, analyzes existing security policies and recommends improvements, particularly for Layer 7 (application-layer) policies. It identifies unused rules, overlaps, and optimization opportunities for NGFWs, ensuring simplified and secure configurations. The documentation highlights Policy Optimizer as a key tool for streamlining NGFW configurations.

* Day 1 Configuration through the customer support portal (CSP) (Option D): The Customer Support Portal (CSP) offers a Day 1 Configuration Wizard for new NGFW deployments, guiding customers through initial setup, licensing, and best-practice configurations for VM-Series, CN-Series, or Cloud NGFW. This tool simplifies the onboarding process, reducing configuration errors and ensuring alignment with Palo Alto Networks' recommendations, as described in the documentation.

* Best Practice Assessment (BPA) in Strata Cloud Manager (SCM) (Option E): BPA, available in SCM, assesses NGFW configurations (e.g., VM-Series, CN-Series) against Palo Alto Networks' best practices, identifying misconfigurations, security gaps, and optimization opportunities. The documentation emphasizes BPA as a critical tool for ensuring simplified, secure, and compliant configurations in cloud and virtualized environments.

Options B (Telemetry to ensure that Palo Alto Networks has full visibility into the firewall configuration) and C (Expedition to enable the creation of custom threat signatures) are incorrect.

Telemetry provides data for Palo Alto Networks' analytics but does not facilitate simplified or best-practice configurations for customers. Expedition is a migration tool, not designed for creating custom threat signatures; it focuses on policy migration and does not align with the intent of simplifying NGFW configurations.

References: Palo Alto Networks Systems Engineer Professional - Software Firewall, Section: NGFW Configuration Tools, Policy Optimizer Documentation, Day 1 Configuration Guide, Strata Cloud Manager BPA Documentation.

NEW QUESTION # 56

What are three benefits of Palo Alto Networks VM-Series firewalls as they relate to direct integration with third-party network virtualization solution providers? (Choose three.)

- A. Integration with Cisco ACI allows insertion of a virtual firewall and enforcement of dynamic policies between endpoint groups without the need for manual policy adjustments.
- B. Integration with VMware NSX provides comprehensive visibility and security of all virtualized data center traffic including intra-host ESXi virtual machine (VM) communications.
- C. Integration with Nutanix AHV allows the firewall to be dynamically informed of changes in the environment and ensures policy is applied to virtual machines (VMs) as they join the network.
- D. Integration with a third-party network virtualization solution allows management and deployment of the entire virtual network and hosts directly from Panorama.
- E. Integration with network virtualization solution providers allows manual deployment and management of firewall rules through multiple interfaces and front ends specific to each technology.

Answer: A,B,C

Explanation:

The question focuses on the benefits of VM-Series firewalls concerning direct integration with third-party network virtualization solutions.

A . Integration with Cisco ACI allows insertion of a virtual firewall and enforcement of dynamic policies between endpoint groups without the need for manual policy adjustments. This is a key benefit. The integration between Palo Alto Networks VM-Series and Cisco ACI automates the insertion of the firewall into the traffic path and enables dynamic policy enforcement based on ACI endpoint groups (EPGs). This eliminates manual policy adjustments and simplifies operations.

C . Integration with Nutanix AHV allows the firewall to be dynamically informed of changes in the environment and ensures policy is applied to virtual machines (VMs) as they join the network. This is also a core advantage. The integration with Nutanix AHV allows the VM-Series firewall to be aware of VM lifecycle events (creation, deletion, migration). This dynamic awareness ensures that security policies are automatically applied to VMs as they are provisioned or moved within the Nutanix environment.

D . Integration with VMware NSX provides comprehensive visibility and security of all virtualized data center traffic including intra-host ESXi virtual machine (VM) communications. This is a significant benefit. The integration between VM-Series and VMware NSX provides granular visibility and security for all virtualized traffic, including east-west (VM-to-VM) traffic within the same ESXi host. This level of microsegmentation is crucial for securing modern data centers.

Why other options are incorrect:

B . Integration with a third-party network virtualization solution allows management and deployment of the entire virtual network and hosts directly from Panorama. While Panorama provides centralized management for VM-Series firewalls, it does not manage the underlying virtual network infrastructure or hosts of third-party providers like VMware NSX or Cisco ACI. These platforms have their own management planes. Panorama manages the security policies and firewalls, not the entire virtualized infrastructure.

E . Integration with network virtualization solution providers allows manual deployment and management of firewall rules through multiple interfaces and front ends specific to each technology. This is the opposite of what integration aims to achieve. The purpose of integration is to automate and simplify management, not to require manual configuration through multiple interfaces. Direct integration aims to reduce manual intervention and streamline operations.

Palo Alto Networks Reference:

To verify these points, you can refer to the following types of documentation on the Palo Alto Networks support site (live.paloaltonetworks.com):

VM-Series Deployment Guides: These guides often have sections dedicated to integrations with specific virtualization platforms like VMware NSX, Cisco ACI, and Nutanix AHV.

Solution Briefs and White Papers: Palo Alto Networks publishes documents outlining the benefits and technical details of these integrations.

Technology Partner Pages: On the Palo Alto Networks website, there are often pages dedicated to technology partners like VMware, Cisco, and Nutanix, which describe the joint solutions and integrations.

NEW QUESTION # 57

A customer has deployed several cloud applications in Amazon Web Services (AWS) by using the native cloud service provider (CSP) firewall, and has discovered that the native firewall provides limited visibility and protection. The customer seeks a solution that provides application visibility and advanced threat prevention, while still allowing for the use of the native AWS management interface to manage the firewall.

- A. AWS VPC VM-Series firewalls
- **B. Cloud NGFW for AWS**
- C. AWS Software credits
- D. Palo Alto Networks CDSS bundle for AWS firewalls

Answer: B

Explanation:

Comprehensive and Detailed In-Depth Step-by-Step Explanation: The customer's AWS environment currently uses the native AWS cloud service provider (CSP) firewall (e.g., AWS Network Firewall or Security Groups), which offers limited application visibility and advanced threat prevention compared to next-generation firewalls (NGFWs). The customer requires a solution that enhances security with application-layer visibility, advanced threat prevention, and integration with the native AWS management interface. The Palo Alto Networks Systems Engineer Professional - Software Firewall documentation provides guidance on selecting the appropriate solution for AWS cloud security.

* Cloud NGFW for AWS (Option B): Cloud NGFW for AWS is a cloud-native firewall service designed specifically for AWS environments, providing advanced application visibility (via App-ID), threat prevention (via WildFire, Threat Prevention, and URL Filtering), and scalable security for cloud applications. It integrates natively with the AWS Management Console, allowing customers to manage the firewall using familiar AWS tools (e.g., VPC, Route 53, CloudWatch) without requiring additional management

platforms like Panorama. The documentation emphasizes Cloud NGFW's ability to leverage AWS-native services for deployment, scalability, and management, meeting the customer's need for enhanced visibility, advanced threat protection, and native AWS integration. This solution addresses the limitations of the native AWS firewall by offering Layer 7 inspection and comprehensive security features while maintaining simplicity through AWS's management interface.

Options A (Palo Alto Networks CDSS bundle for AWS firewalls), C (AWS VPC VM-Series firewalls), and D (AWS Software credits) are incorrect. The Palo Alto Networks CDSS bundle (Option A) refers to Cloud-Delivered Security Services (e.g., Threat Prevention, WildFire), but it is not a standalone firewall solution; it enhances existing firewalls (e.g., Cloud NGFW or VM-Series) and does not integrate natively with the AWS Management Console as a primary firewall. "AWS VPC VM-Series firewalls" (Option C) is not a standard term; VM-Series firewalls are deployed in AWS VPCs, but they require separate management (e.g., via Panorama) and do not natively integrate with the AWS Management Console for full management, introducing complexity the customer wants to avoid. AWS Software credits (Option D) are a licensing model, not a firewall solution, and do not address the customer's need for visibility, protection, or native management, making it irrelevant for this use case.

References: Palo Alto Networks Systems Engineer Professional - Software Firewall, Section: Cloud NGFW for AWS Deployment, AWS Integration Guide, Application Visibility and Threat Prevention Documentation, Native Cloud Management Documentation.

NEW QUESTION # 58

.....

Before the clients purchase our PSE-SFW-24 study practice guide, they can have a free trial freely. The clients can log in our company's website and visit the pages of our products. The pages of our products lists many important information about our PSE-SFW-24 exam materials and they include the price, version and updated time of our products, the exam name and code, the total amount of the questions and answers, the merits of our PSE-SFW-24 useful test guide and the discounts. You can have a comprehensive understanding of our PSE-SFW-24 useful test guide after you see this information.

PSE-SFW-24 Trustworthy Pdf: <https://www.vcedumps.com/PSE-SFW-24-examcollection.html>

Palo Alto Networks Test PSE-SFW-24 Engine So you can be at ease about our products, we will give you the most satisfied study material, Palo Alto Networks PSE-SFW-24 Trustworthy Pdf - PSE-SFW-24 Trustworthy Pdf Palo Alto Networks PSE-SFW-24 Trustworthy Pdf VCEdumps PSE-SFW-24 Trustworthy Pdf brings you cutting edge Palo Alto Networks PSE-SFW-24 Trustworthy Pdf PSE-SFW-24 Trustworthy Pdf training materials you can always rely on, Once the update of PSE-SFW-24 exam dump releases, we will inform you the first time.

Over time, the policies and reward structure of everyone who PSE-SFW-24 Test King plays a part in the system will need to change, adapting to a new set of metrics designed around holistic patient care.

They use plants and bioengineered additives to create plant based PSE-SFW-24 food that looks and tastes like meat, So you can be at ease about our products, we will give you the most satisfied study material.

Pass Guaranteed 2026 PSE-SFW-24: Marvelous Test Palo Alto Networks Systems Engineer Professional - Software Firewall Engine

Palo Alto Networks - PSE-Software Firewall Professional Palo Alto Networks VCEdumps brings you cutting edge Palo Alto Networks PSE-Software Firewall Professional training materials you can always rely on, Once the update of PSE-SFW-24 exam dump releases, we will inform you the first time.

Using our products, you can get everything you want, PSE-SFW-24 Test King including your most important pass rate, After you use, you will know that it is really good.

- Free PDF Palo Alto Networks - PSE-SFW-24 - High Hit-Rate Test Palo Alto Networks Systems Engineer Professional - Software Firewall Engine ☐ Simply search for 《 PSE-SFW-24 》 for free download on [www.vceengine.com] ☐ PSE-SFW-24 Latest Exam Question
- Pass Guaranteed 2026 PSE-SFW-24: Unparalleled Test Palo Alto Networks Systems Engineer Professional - Software Firewall Engine ☐ Search for 《 PSE-SFW-24 》 on ➡ www.pdfvce.com ☐ ☐ immediately to obtain a free download ☐ Exam PSE-SFW-24 Cram Questions
- New Test PSE-SFW-24 Engine | Latest Palo Alto Networks PSE-SFW-24: Palo Alto Networks Systems Engineer Professional - Software Firewall 100% Pass ☐ Search for “PSE-SFW-24 ” on 🔍 www.torrentvce.com ☐ ☐ immediately to obtain a free download ☐ PSE-SFW-24 New Braindumps Free
- PSE-SFW-24 Latest Exam Pdf ☐ Reliable PSE-SFW-24 Exam Pattern ☐ PSE-SFW-24 Valid Test Voucher ☐ Search for 「 PSE-SFW-24 」 and obtain a free download on ▶ www.pdfvce.com ◀ ☐ PSE-SFW-24 Reliable Exam Materials

- BTW, DOWNLOAD part of VCEDumps PSE-SFWW-Pro-24 dumps from Cloud Storage: https://drive.google.com/open?id=1kscP0tV_s75rSIjtDuEMB-hVCyl5T0JE

BTW, DOWNLOAD part of VCEDumps PSE-SFWW-Pro-24 dumps from Cloud Storage: https://drive.google.com/open?id=1kscP0tV_s75rSIjtDuEMB-hVCyl5T0JE