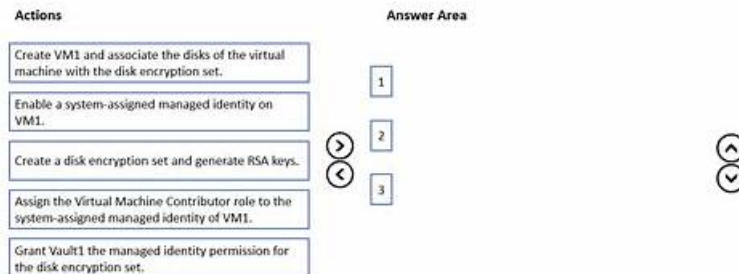


Hot Microsoft AZ-801 Latest Braindumps Free Are Leading Materials & Fast Download AZ-801 Preparation Store



BONUS!!! Download part of DumpStillValid AZ-801 dumps for free: <https://drive.google.com/open?id=1ftT4RFEw1KzjNviTNuXitIsIk-WmlwT>

The DumpStillValid AZ-801 PDF questions file, desktop practice test software, and web-based practice test software, all these three AZ-801 practice test questions formats are ready for instant download. Just download any Microsoft AZ-801 Exam Questions format and start this journey with confidence.

Microsoft AZ-801 (Configuring Windows Server Hybrid Advanced Services) is a certification exam that is designed to assess the knowledge and skills of IT professionals who wish to configure and manage advanced Windows Server Hybrid solutions. Configuring Windows Server Hybrid Advanced Services certification exam is intended for individuals who have a thorough understanding of Azure services, Windows Server administration, and networking technologies.

>> AZ-801 Latest Braindumps Free <<

AZ-801 Latest Braindumps Free | Pass Guaranteed | Refund Guaranteed

If you are going to purchasing the AZ-801 exam bootcamp online, you may pay more attention to the pass rate. With the pass rate more than 98%, our AZ-801 exam materials have gained popularity in the international market. And we have received many good feedbacks from our customers. In addition, we offer you free demo to have a try before buying AZ-801 Exam Braindumps, so that you can have a deeper understanding of what you are going to buy. You can also enjoy free update for one year, and the update version for AZ-801 will be sent to your email automatically.

Microsoft Configuring Windows Server Hybrid Advanced Services Sample Questions (Q207-Q212):

NEW QUESTION # 207

Your network contains an Active Directory Domain Services (AD DS) domain.

You need to implement a solution that meets the following requirements:

- * Ensures that the members of the Domain Admins group are allowed to sign in only to domain controllers
 - * Ensures that the lifetime of Kerberos Ticket Granting Ticket (TGT) for the members of the Domain Admins group is limited to one hour
- Which three actions should you perform in sequence? To answer, move the appropriate actions from the list of actions to the answer area and arrange them in the correct order.

Actions	Answer Area
Create a Dynamic Access Control central access policy.	
Configure the Kerberos Policy settings for the Default Domain Policy Group Policy Object (GPO).	
Create a Dynamic Access Control claim type.	
Create an authentication policy.	
Assign the authentication policy silo to user and computer accounts.	
Create an authentication policy silo.	

Answer:

Explanation:

Actions	Answer Area
Create a Dynamic Access Control central access policy.	
Configure the Kerberos Policy settings for the Default Domain Policy Group Policy Object (GPO).	
Create a Dynamic Access Control claim type.	
Create an authentication policy.	Create an authentication policy.
Assign the authentication policy silo to user and computer accounts.	Create an authentication policy silo.
Create an authentication policy silo.	Assign the authentication policy silo to user and computer accounts.

Explanation:

Create an authentication policy.
Create an authentication policy silo.
Assign the authentication policy silo to user and computer accounts.

Reference:

<https://docs.microsoft.com/en-us/windows-server/identity/ad-ds/manage/how-to-configure-protected-accounts>

NEW QUESTION # 208

You are planning the www.fabrikam.com website migration to support the Azure migration plan.

How should you configure WebApp1? To answer, select the appropriate options in the answer area.

NOTE: Each correct selection is worth one point.

To enable WebApp1 to handle requests for the website:

<input type="checkbox"/>	Add a custom domain name.
<input type="checkbox"/>	Create a deployment slot.
<input type="checkbox"/>	Create a private endpoint.

To point client connections to WebApp1:

<input type="checkbox"/>	Add HTTP redirect rules on WEB1 and WEB2.
<input type="checkbox"/>	Implement Azure Front Door.
<input type="checkbox"/>	Implement Azure Traffic Manager.
<input type="checkbox"/>	Modify a DNS record.

Answer:

Explanation:

To enable WebApp1 to handle requests for the website:

- Add a custom domain name.
- Create a deployment slot.
- Create a private endpoint.

To point client connections to WebApp1:

- Add HTTP redirect rules on WEB1 and WEB2.
- Implement Azure Front Door.
- Implement Azure Traffic Manager.
- Modify a DNS record.

Explanation:

Box 1: Add a custom domain name

To migrate www.fabrikam.com website to an Azure App Service web app, you need to add Fabrikam.com as a custom domain in Azure. This will make the domain name available to use in the web app.

Box 2: Modify a DNS record

You need to change the DNS record for www.fabrikam.com to point to the Azure web app.

HTTP redirect rules won't work because WEB1 and WEB2 will be decommissioned.

Reference:

<https://docs.microsoft.com/en-us/azure/app-service/app-service-web-tutorial-custom-domain?tabs=a%2Cazurecli>

NEW QUESTION # 209

You are planning the implementation of Cluster2 to support the on-premises migration plan.

You need to ensure that the disks on Cluster2 meet the security requirements.

In which order should you perform the actions? To answer, move all actions from the list of actions to the answer area and arrange them in the correct order.

Actions

- Add a disk resource to the cluster.
- Enable BitLocker on the volume.
- Update the BitLockerProtectorInfo property of the volume.
- Create a Cluster Shared Volume (CSV).
- Put the disk in maintenance mode.

Answer Area

Answer:

Explanation:

Actions	Answer Area
Add a disk resource to the cluster.	Add a disk resource to the cluster.
Enable BitLocker on the volume.	Create a Cluster Shared Volume (CSV).
Update the BitLockerProtectorInfo property of the volume.	Put the disk in maintenance mode.
Create a Cluster Shared Volume (CSV).	Enable BitLocker on the volume.
Put the disk in maintenance mode.	Update the BitLockerProtectorInfo property of the volume.

Explanation

Graphical user interface, text, application, table Description automatically generated

Add a disk resource to the cluster.

Create a Cluster Shared Volume (CSV).

Put the disk in maintenance mode.

Enable BitLocker on the volume.

Update the BitLockerProtectorInfo property of the volume.

Reference:

<https://docs.microsoft.com/en-us/windows-server/failover-clustering/bitlocker-on-csv-in-ws-2022>

Topic 2, Contoso, Ltd

Case study

This is a case study. Case studies are not timed separately. You can use as much exam time as you would like to complete each case. However, there may be additional case studies and sections on this exam. You must manage your time to ensure that you are able to complete all questions included on this exam in the time provided.

To answer the questions included in a case study, you will need to reference information that is provided in the case study. Case studies might contain exhibits and other resources that provide more information about the scenario that is described in the case study. Each question is independent of the other questions in this case study.

At the end of this case study, a review screen will appear. This screen allows you to review your answers and to make changes before you move to the next section of the exam. After you begin a new section, you cannot return to this section.

To start the case study

To display the first question in this case study, click the button. Use the buttons in the left pane to explore the content of the case study before you answer the questions. Clicking these buttons displays information such as business requirements, existing environment, and problem statements. If the case study has an All Information tab, note that the information displayed is identical to the information displayed on the subsequent tabs. When you are ready to answer a question, click the button to return to the question.

Overview

Contoso, Ltd. is a manufacturing company that has a main office in Seattle and branch offices in Los Angeles and Montreal.

Existing Environment

Active Directory Environment

Contoso has an on-premises Active Directory Domain Services (AD DS) domain named contoso.com that syncs with an Azure Active Directory (Azure AD) tenant. The AD DS domain contains the domain controllers shown in the following table.

Name	Operating system	Operation master role
DC1	Windows Server 2012 R2	RID master, schema master
DC2	Windows Server 2016	PDC emulator, infrastructure master
DC3	Windows Server 2016	Domain naming master

Contoso recently purchased an Azure subscription.

The functional level of the forest is Windows Server 2012 R2. The functional level of the domain is Windows Server 2012. The forest has the Active Directory Recycle Bin enabled.

The contoso.com domain contains the users shown in the following table.

Name	Organization unit (OU)/Container	Member of
User1	OU1	Group2, Group4
User2	Users	Group2
User3	OU1	Group3, Group4
Admin1	OU1	Domain Admins

The contoso.com domain has the Group Policy Objects (GPOs) shown in the following table.

Name	Minimum password length	Linked to
Default Domain Policy	8	contoso.com
GPO1	10	OU1

The contoso.com domain has the Password Settings Objects (PSOs) shown in the following table.

Name	Minimum password length	Linked to
Default Domain Policy	8	contoso.com
GPO1	10	OU1

Server Infrastructure

The contoso.com domain contains servers that run Windows Server 2022 as shown in the following table.

Name	Description
Server1	Contains a share named Share1
Server2	None
Server3	None
Server4	Has Remote Desktop enabled

By using Windows Firewall with Advanced Security, the servers have isolation connection security rules configured as shown in the following table.

Name	Endpoint 1	Endpoint 2	Authentication mode
Server1	Any	Any	Request inbound and outbound
Server2	Any	Any	Require inbound and request outbound
Server3	Any	Any	Require inbound and outbound
DC1	Any	Any	Request inbound and outbound
DC2	Any	Any	Request inbound and outbound
DC3	Any	Any	Request inbound and outbound

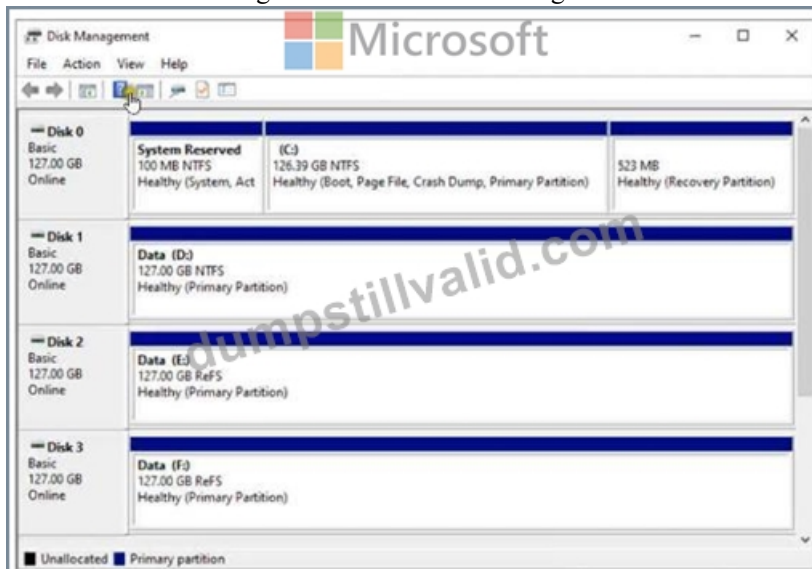
Server4 has no connection security rules.

Server4 Configurations

Server4 has the effective Group Policy settings for user rights as shown in the following table.

Policy	Security Setting
Access this computer from the network	(Group), Administrators, Backup Operators, Everyone, Users
Deny access to this computer from the network	(Group)
Allow log on through Remote Desktop Services	Group2, Administrators, Remote Desktop Users
Deny log on through Remote Desktop Services	Group3

Server4 has the disk configurations shown in the following exhibit.



Virtualization Infrastructure

The contoso.com domain has the Hyper-V failover clusters shown in the following table.

Name	Number of nodes	Number of virtual machines
Cluster1	6	18
Cluster2	4	12
Cluster3	2	6

Technical Requirements

Contoso identifies the following technical requirements:

- * Promote a new server named DC4 that runs to Windows Server 2022 to a domain controller.
- * Replicate the virtual machines from Cluster2 to an Azure Recovery Services vault.
- * Centrally manage performance alerts in Azure for all the domain controllers.
- * Ensure that User1 can recover objects from the Active Directory Recycle Bin.
- * Migrate Share1 to Server2, including all the share and folder permissions.
- * Back up Server4 and all data to an Azure Recovery Services vault.
- * Use Hyper-V Replica to protect the virtual machines in Cluster3.
- * Implement BitLocker Drive Encryption (BitLocker) on Server4.
- * Whenever possible, use the principle of least privilege.

NEW QUESTION # 210

Your network contains an Active Directory Domain Services (AD DS) domain. The domain contains the servers shown in the following table.

Name	Operating system	Server role
Server1	Windows Server 2019	DHCP Server
Server2	Windows Server 2022	DHCP Server
Server3	Windows Server 2019	File Server

Server3 contains a share named Share1.

On Server1, DHCP has the following configurations:

Conflict detection attempts: 3

An IPv4 scope named Scope1 that has the following settings:

1.Address Pool: 172.16.10.100 - 172.16.10.130

2.Address Leases:

- 172.16.10.100 computer1.contoso.com

- 172.16.10.101 computer2.contoso.com

Reservations: 172.16.10.101 computer2.contoso.com

Policies: Policy1

You perform the following actions:

* On Server1, you run

```
Export-DhcpServer -File \\Server3\Share1\File1.xml
```

* On Server2, you run

```
Import-DhcpServer -File \\Server3\Share1\File1.xml
```

```
-BackupPath \\Server3\Share1.
```

For each of the following statements, select Yes if the statement is true. Otherwise, select No.

NOTE: Each correct selection is worth one point.

Statements	Yes	No
On Server2, Conflict detection attempts is set to 3.	<input type="radio"/>	<input type="radio"/>
On Server2, there is a reservation for computer2.contoso.com.	<input type="radio"/>	<input type="radio"/>
On Server2, Policy1 is applied to Scope1.	<input type="radio"/>	<input type="radio"/>

Answer:

Explanation:

Statements	Yes	No
On Server2, Conflict detection attempts is set to 3.	<input checked="" type="radio"/>	<input type="radio"/>
On Server2, there is a reservation for computer2.contoso.com.	<input type="radio"/>	<input checked="" type="radio"/>
On Server2, Policy1 is applied to Scope1.	<input checked="" type="radio"/>	<input type="radio"/>

Explanation

Text Description automatically generated

Statements	Yes	No
On Server2, Conflict detection attempts is set to 3.	<input type="radio"/>	<input type="radio"/>
On Server2, there is a reservation for computer2.contoso.com.	<input type="radio"/>	<input type="radio"/>
On Server2, Policy1 is applied to Scope1.	<input type="radio"/>	<input type="radio"/>

Reference:

<https://docs.microsoft.com/en-us/powershell/module/dhcpserver/export-dhcpserver?view=windowsserver2022-p>

<https://docs.microsoft.com/en-us/powershell/module/dhcpserver/import-dhcpserver?view=windowsserver2022-p>

NEW QUESTION # 211

You have five Azure virtual machines. You have a dedicated Azure Storage account to collect performance data. You need to send

the collected data directly to the Azure Storage account. What should you install on the virtual machines?

- A. the Telegraf agent
- B. the Azure Monitor agent
- C. the Dependency agent
- D. the Azure Connected Machine agent
- E. the Azure Diagnostics extension

Answer: E

NEW QUESTION # 212

.....

For candidates who are going to pay for AZ-801 test materials online, they may care more about the money safety. We apply the international recognition third party for payment, and if you pay for AZ-801 exam materials, we can ensure the safety of your money and account. Besides, the third party will also protect your interests. The pass rate for AZ-801 testing materials is 98.75%, and we can guarantee you that you can pass the exam just one time. We are pass guarantee and money back guarantee if you fail to pass the exam, and the refund will be returned to your payment account.

AZ-801 Preparation Store: <https://www.dumpstillvalid.com/AZ-801-prep4sure-review.html>

- AZ-801 Free Dump Download Braindumps AZ-801 Torrent Latest AZ-801 Exam Guide Search on 《 www.troytecdumps.com 》 for AZ-801 to obtain exam materials for free download Braindumps AZ-801 Torrent
- Question AZ-801 Explanations Exam AZ-801 Experience Question AZ-801 Explanations Download (AZ-801) for free by simply entering www.pdfvce.com website AZ-801 New Cram Materials
- Valid AZ-801 test answers - Microsoft AZ-801 pass test - AZ-801 lead2pass review Download AZ-801 for free by simply entering www.examdiscuss.com website Reliable AZ-801 Test Voucher
- Reliable AZ-801 Test Book AZ-801 New Cram Materials AZ-801 Test Question Download AZ-801 for free by simply searching on www.pdfvce.com AZ-801 Valid Exam Simulator
- Latest AZ-801 Exam Guide AZ-801 New Cram Materials AZ-801 PDF VCE Simply search for AZ-801 for free download on [www.pass4test.com] AZ-801 Latest Test Sample
- Highly-Praised AZ-801 Qualification Test Helps You Pass the Configuring Windows Server Hybrid Advanced Services Exam - Pdfvce Enter www.pdfvce.com and search for AZ-801 to download for free AZ-801 PDF VCE
- Quiz 2026 High Pass-Rate Microsoft AZ-801: Configuring Windows Server Hybrid Advanced Services Latest Braindumps Free Search for AZ-801 on www.practicevce.com immediately to obtain a free download AZ-801 Test Passing Score
- AZ-801 Test Question Reliable AZ-801 Exam Question Exam AZ-801 Experience Search for AZ-801 and download it for free on { www.pdfvce.com } website Exam AZ-801 Experience
- Microsoft AZ-801 Dumps Are Out Download And Prepare {yyyyMM} Search for AZ-801 and download exam materials for free through [www.testkingpass.com] AZ-801 Test Question
- AZ-801 Free Dump Download Question AZ-801 Explanations Latest AZ-801 Exam Guide The page for free download of “ AZ-801 ” on www.pdfvce.com will open immediately AZ-801 Latest Test Guide
- Pass Guaranteed 2026 Microsoft Professional AZ-801: Configuring Windows Server Hybrid Advanced Services Latest Braindumps Free www.testkingpass.com is best website to obtain AZ-801 for free download Reliable AZ-801 Test Voucher
- laylaqpuv528227.wiki-jp.com, www.stes.tyc.edu.tw, bookmarkfox.com, directory-webs.com, martinatohw132330.blogspotapp.com, ticketsbookmarks.com, bookmarklogin.com, petreligacademy.com, socialbaskets.com, myportal.utt.edu.tt, myportal.utt.edu.tt, myportal.utt.edu.tt, myportal.utt.edu.tt, myportal.utt.edu.tt, myportal.utt.edu.tt, myportal.utt.edu.tt, myportal.utt.edu.tt, myportal.utt.edu.tt, myportal.utt.edu.tt, Disposable vapes

What's more, part of that DumpStillValid AZ-801 dumps now are free: <https://drive.google.com/open?id=1ft4RFEw1KzjNviTNuXitIsIk-WmlwT>