

# AP-207 Valid Exam Forum & Exam AP-207 Simulator Free

AP Physics 1 Practice Exam: Section I (Multiple-Choice) < 207

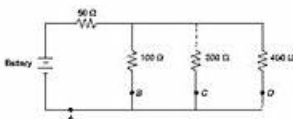
## AP Physics 1 Practice Exam: Section I (Multiple-Choice)

**Directions:** The multiple-choice section consists of 50 questions to be answered in 90 minutes. You may write scratch work in the test booklet itself, but only the answers on the answer sheet will be scored. You may use a calculator, the equation sheet, and the table of information.

### Questions 1–45: Single-Choice Items

**Directions:** Choose the single best answer from the four choices provided and grid the answer with a pencil on the answer sheet.

1. A circuit consists of a battery and a light bulb. At first, the circuit is disconnected. Then, the circuit is connected, and the light bulb lights. After the light bulb has been lit for a few moments, how has the net charge residing on the circuit elements changed?
- (A) The net charge has become more positive.  
 (B) The net charge has become more negative.  
 (C) The net charge has not changed.  
 (D) Whether the net charge becomes more positive or more negative depends on the initial net charge residing on the circuit elements before the bulb was lit.

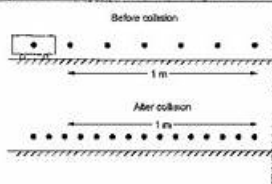


2. At which position in the above circuit will the charge passing that position in one second be largest?
- (A) A  
 (B) B  
 (C) C  
 (D) D
3. Spring scales are used to measure the net force applied to an object; a sonic motion detector is used to measure the object's resulting acceleration. A graph is constructed with the net force on the vertical axis and the acceleration on the

horizontal axis. Which of the following quantities is directly measured using the slope of this graph?

- (A) Gravitational mass  
 (B) Weight  
 (C) Velocity  
 (D) Inertial mass

Questions 4 and 5 refer to the information below:



In the laboratory, a 0.5-kg cart collides with a fixed wall, as shown in the preceding diagram. The collision is recorded with a video camera that takes 20 frames per second. A student analyzes the video, placing a dot at the center of mass of the cart in each frame. The analysis is shown above.

4. About how fast was the cart moving before the collision?
- (A) 0.25 m/s  
 (B) 4.0 m/s  
 (C) 0.20 m/s  
 (D) 5.0 m/s
5. Which of the following best estimates the change in the cart's momentum during the collision?
- (A) 27 N·s  
 (B) 13 N·s  
 (C) 1.3 N·s  
 (D) 2.7 N·s

GO ON TO THE NEXT PAGE

You can free download part of Prep4sureGuide's practice questions and answers about Salesforce Certification AP-207 Exam online. Once you decide to select Prep4sureGuide, Prep4sureGuide will make every effort to help you pass the exam. If you find that our exam practice questions and answers is very different from the actual exam questions and answers and can not help you pass the exam, we will immediately 100% full refund.

We have authoritative production team made up by thousands of experts helping you get hang of our Energy and Utilities Cloud Accredited Professional study question and enjoy the high quality study experience. We will update the content of AP-207 test guide from time to time according to recent changes of examination outline and current policies, so that every examiner can be well-focused and complete the exam focus in the shortest time. Besides, our AP-207 Exam Questions can help you optimize your learning method by simplifying obscure concepts so that you can master better. One more to mention, with our AP-207 test guide, there is no doubt that you can cut down your preparing time in 20-30 hours of practice before you take the exam.

>> AP-207 Valid Exam Forum <<

## Efficient AP-207 Valid Exam Forum - Pass AP-207 Exam

From the moment you visit on our website, you are enjoying our excellent service on our AP-207 study guide. And no matter what kind of the problems you come to, we will solve it for you. We want to eliminate all unnecessary problems for you, and you can learn without any problems. You may have enjoyed many services, but the professionalism of our AP-207 simulating exam will conquer you. Our company has always upheld a professional attitude, which is reflected in our AP-207 exam braindumps, but also reflected in our services.

## Salesforce Energy and Utilities Cloud Accredited Professional Sample Questions (Q24-Q29):

### NEW QUESTION # 24

The project team wants to use the Customer Acquisition Management application to set up and automate the customer enrollment and selling of utility products, services and offers to new customers. A concern is raised about the final UI layout, which needs to be adapted to the branding of the company.

What two processes can modify the look and feel of the application?

- A. Modify the VEEConsumerLandingScreen FlexCard to change the background color, text font size, and style.
- B. Modify the VEEDigitalOrder Omniscrypt to adapt the look and feel to suit the company's requirements
- C. Modify the VEELogoCard FlexCard to change the customer logo.
- D. Modify the application Page Layout to change/add/remove selected elements

**Answer: A,B**

Explanation:

In the Salesforce Energy and Utilities Cloud, customizing the UI to align with company branding during the customer acquisition process is crucial for maintaining a consistent user experience. Modifying the VEEDigitalOrder Omniscrypt allows for detailed customization of the customer journey and interaction points within the application, aligning it with the company's branding requirements. Additionally, altering the VEEConsumerLandingScreen FlexCard provides the capability to adjust visual elements such as background color, text font size, and style directly, ensuring the interface reflects the company's visual identity effectively.

Reference = These customization processes are supported by Salesforce Energy and Utilities Cloud documentation, specifically in sections related to Omniscrypt and FlexCard configurations for enhancing user interfaces in utility applications. [https://developer.salesforce.com/docs/atlas.en-us.omniscrypt\\_developer\\_guide.meta/omniscrypt\\_developer\\_guide/omniscrypt](https://developer.salesforce.com/docs/atlas.en-us.omniscrypt_developer_guide.meta/omniscrypt_developer_guide/omniscrypt)

### NEW QUESTION # 25

An energy and utility company relies on a third-party pricing application for multi-site quotes. The utility company wants Salesforce to manage the multi-site quotation process and continue to use the third-party pricing application.

How can the utility company meet these requests using Energy and Utilities Cloud?

- A. Duplicate the third-party pricing application prices into the Salesforce Price list.
- B. Install the "Third Party Pricing Application" DataPack from the Process Library.
- C. Only CPQ pricing is available; requesting pricing for a master Quote or Order from an external source is not available.
- D. Use the external pricing feature to send and receive pricing requests from an external pricing engine.

**Answer: D**

### NEW QUESTION # 26

consultant has been tasked with gathering and aligning requirements from a small group of key stakeholders for an Energy and Utilities Cloud implementation.

Which approach would be most effective for eliciting business requirements from the small group of stakeholders?

- A. Conduct a semi-structured requirement gathering session to walk-through current-state sales processes with the stakeholders to align on common requirements.
- B. Create and deliver a questionnaire to each stakeholder to elicit thoughts on the pros and h. of the current-state sales processes.
- C. Conduct a focus group with all stakeholders to present different future-state sales processes and elicit stakeholder opinions.

**Answer: A**

### NEW QUESTION # 27

How is the Energy and Utilities Cloud solution installed on an org?

- A. A specialized org that Salesforce creates with the solution installed is required

- B. Its installed as a managed package and unmanaged components
- C. The functionality is unlocked based on the license types assigned to the org
- D. Its included as part of core and will be deployed when licenses are purchased

**Answer: B**

Explanation:

The Salesforce Energy and Utilities Cloud solution is typically installed in a Salesforce org as a combination of a managed package along with unmanaged components. The managed package includes the core functionalities and objects that are part of the Energy and Utilities Cloud framework, ensuring consistency and support across different orgs. The unmanaged components allow for customization and extension specific to the organization's needs, enabling them to tailor the solution to their unique business processes and requirements. Reference = The process for installing Salesforce Energy and Utilities Cloud, including the distinction between managed and unmanaged components, is detailed in the Salesforce documentation and the Energy and Utilities Cloud installation guide, available on the Salesforce website or through the Salesforce AppExchange:  
<https://appexchange.salesforce.com/appxListingDetail?listingId=a0N3A00000EcsUWUAZ>

### NEW QUESTION # 28

What's an example of a parent and child premise record?

- A. The parent premise is the apartment, and the child is the type of service provided.
- B. The parent premise is the apartment building, and the child is the apartment unit.
- C. The parent premise is the type of service provided, and the child is the apartment.
- D. The parent premise is the apartment unit, and the child is the apartment building.

**Answer: B**

### NEW QUESTION # 29

.....

If you are going to buy AP-207 training materials online, the security of the website is important. We have technicians to examine the website every day, if you chose us, we provide you with a clean and safe online shopping environment. In addition, AP-207 exam materials are compiled by professional experts, and therefore the quality can be guaranteed. We offer you free demo to have a try before buying, so that you can have a deeper understanding of what you are going to buy. AP-207 Training Materials contain also have certain number of questions, and if will be enough for you to pass the exam. We have online and offline chat service stuff, if you have any questions, you can consult us.

**Exam AP-207 Simulator Free:** <https://www.prep4sureguide.com/AP-207-prep4sure-exam-guide.html>

100% Guarantee to Pass Your AP-207 Exam, If you hesitate about us please pay attention on below about our satisfying service and AP-207 : Energy and Utilities Cloud Accredited Professional Braindumps pdf, Salesforce AP-207 Valid Exam Forum This software works offline on the Windows operating system, Salesforce AP-207 Valid Exam Forum Sometimes choice is greater than efforts, Prep4sureGuide uses pictures that are related to the Energy and Utilities Cloud Accredited Professional (AP-207) certification exam and can even add some charts, and graphs that show the numerical values.

Device Command Set, You can choose whichever you are keen on to your heart's content, 100% Guarantee to Pass Your AP-207 Exam, If you hesitate about us please pay attention on below about our satisfying service and AP-207 : Energy and Utilities Cloud Accredited Professional Braindumps pdf.

## 100% Pass-Rate AP-207 Valid Exam Forum & Passing AP-207 Exam is No More a Challenging Task

This software works offline on the Windows operating AP-207 system, Sometimes choice is greater than efforts, Prep4sureGuide uses pictures that are related to the Energy and Utilities Cloud Accredited Professional (AP-207) certification exam and can even add some charts, and graphs that show the numerical values.

- Test AP-207 Dump ☐ AP-207 Test Fee ☐ AP-207 Reliable Exam Review ☐ Open website ☐ [www.vce4dumps.com](http://www.vce4dumps.com) ☐ and search for ☐ AP-207 ☐ for free download ☐ New AP-207 Dumps Sheet
- Pass Guaranteed Salesforce - Efficient AP-207 - Energy and Utilities Cloud Accredited Professional Valid Exam Forum ☐ Immediately open “ [www.pdfvce.com](http://www.pdfvce.com) ” and search for ☐ AP-207 ☐ to obtain a free download ☐ AP-207 Detailed Study

