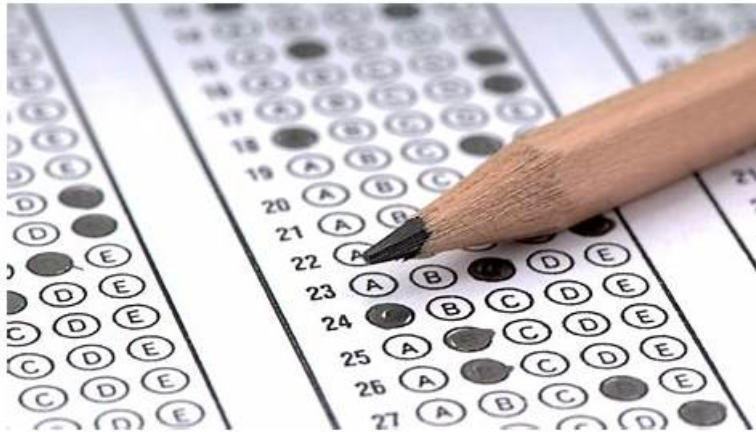


CWSP-208 Latest Exam Online | New CWSP-208 Exam Cram



P.S. Free 2026 CWNP CWSP-208 dumps are available on Google Drive shared by ActualTestsQuiz
<https://drive.google.com/open?id=1Ne5CRy1i9eo0x3zW6FHjjnrPqLHNPUX>

You will become accustomed to and familiar with the free demo for CWNP CWSP-208 Exam Questions. Exam self-evaluation techniques in our CWSP-208 desktop-based software include randomized questions and timed tests. These tools assist you in assessing your ability and identifying areas for improvement to pass the CWNP Certified Wireless Security Professional (CWSP) exam.

CWNP CWSP-208 Exam Syllabus Topics:

Topic	Details
Topic 1	<ul style="list-style-type: none">• Vulnerabilities, Threats, and Attacks: This section of the exam evaluates a Network Infrastructure Engineer in identifying and mitigating vulnerabilities and threats within WLAN systems. Candidates are expected to use reliable information sources like CVE databases to assess risks, apply remediations, and implement quarantine protocols. The domain also focuses on detecting and responding to attacks such as eavesdropping and phishing. It includes penetration testing, log analysis, and using monitoring tools like SIEM systems or WIPS• WIDS. Additionally, it covers risk analysis procedures, including asset management, risk ratings, and loss calculations to support the development of informed risk management plans.
Topic 2	<ul style="list-style-type: none">• Security Lifecycle Management: This section of the exam assesses the performance of a Network Infrastructure Engineer in overseeing the full security lifecycle—from identifying new technologies to ongoing monitoring and auditing. It examines the ability to assess risks associated with new WLAN implementations, apply suitable protections, and perform compliance checks using tools like SIEM. Candidates must also demonstrate effective change management, maintenance strategies, and the use of audit tools to detect vulnerabilities and generate insightful security reports. The evaluation includes tasks such as conducting user interviews, reviewing access controls, performing scans, and reporting findings in alignment with organizational objectives.
Topic 3	<ul style="list-style-type: none">• WLAN Security Design and Architecture: This part of the exam focuses on the abilities of a Wireless Security Analyst in selecting and deploying appropriate WLAN security solutions in line with established policies. It includes implementing authentication mechanisms like WPA2, WPA3, 802.1X• EAP, and guest access strategies, as well as choosing the right encryption methods, such as AES or VPNs. The section further assesses knowledge of wireless monitoring systems, understanding of AKM processes, and the ability to set up wired security systems like VLANs, firewalls, and ACLs to support wireless infrastructures. Candidates are also tested on their ability to manage secure client onboarding, configure NAC, and implement roaming technologies such as 802.11r. The domain finishes by evaluating practices for protecting public networks, avoiding common configuration errors, and mitigating risks tied to weak security protocols.

Topic 4	<ul style="list-style-type: none"> • Security Policy: This section of the exam measures the skills of a Wireless Security Analyst and covers how WLAN security requirements are defined and aligned with organizational needs. It emphasizes evaluating regulatory and technical policies, involving stakeholders, and reviewing infrastructure and client devices. It also assesses how well high-level security policies are written, approved, and maintained throughout their lifecycle, including training initiatives to ensure ongoing stakeholder awareness and compliance.
---------	---

>> CWSP-208 Latest Exam Online <<

ActualTestsQuiz CWNP CWSP-208 Gives you the Necessary Knowledge to Pass

If you want to find the best CWSP-208 study materials, the first thing you need to do is to find a bank of questions that suits you. Our CWSP-208 learning material is prepared by experts in strict accordance with the exam outline of the CWSP-208 certification exam, whose main purpose is to help students to pass the exam with the least amount of time and effort. We can claim that if you study with our CWSP-208 Practice Engine for 20 to 30 hours, then you will be sure to pass the exam.

CWNP Certified Wireless Security Professional (CWSP) Sample Questions (Q50-Q55):

NEW QUESTION # 50

In order to acquire credentials of a valid user on a public hot-spot network, what attacks may be conducted? Choose the single completely correct answer.

- A. RF DoS and/or physical theft
- **B. Social engineering and/or eavesdropping**
- C. Code injection and/or XSS
- D. MAC denial of service and/or physical theft
- E. Authentication cracking and/or RF DoS

Answer: B

Explanation:

Comprehensive Detailed Explanation:

On public Wi-Fi hotspots (typically unsecured), attackers often perform:

Eavesdropping: By passively listening to unencrypted traffic, an attacker can capture credentials or sensitive data.

Social engineering: Users may be tricked into entering their credentials on a spoofed login page or disclosing them directly through phishing or manipulation.

These are the most effective and common methods for credential theft in open network environments.

Incorrect:

B & C. Physical theft is not network-based and not relevant to hotspot-based credential acquisition.

D). Authentication cracking is not applicable to open networks with captive portals.

E). Code injection/XSS may happen in web apps but are not directly methods for acquiring hotspot credentials.

References:

CWSP-208 Study Guide, Chapter 5 (Threats and Attacks)

CWNP Security Essentials: Eavesdropping and Social Engineering in WLANs

NEW QUESTION # 51

Given: In XYZ's small business, two autonomous 802.11ac APs and 12 client devices are in use with WPA2- Personal. What statement about the WLAN security of this company is true?

- A. Intruders may obtain the passphrase with an offline dictionary attack and gain network access, but will be unable to decrypt the data traffic of other users.
- B. An unauthorized WLAN user with a protocol analyzer can decode data frames of authorized users if he captures the BSSID, client MAC address, and a user's 4-Way Handshake.
- C. Because WPA2-Personal uses Open System authentication followed by a 4-Way Handshake, hijacking attacks are easily performed.

- D. A successful attack against all unicast traffic on the network would require a weak passphrase dictionary attack and the capture of the latest 4-Way Handshake for each client.
- E. An unauthorized wireless client device cannot associate, but can eavesdrop on some data because WPA2-Personal does not encrypt multicast or broadcast traffic.

Answer: D

Explanation:

In WPA2-Personal, each client derives its Pairwise Transient Key (PTK) based on a shared Pairwise Master Key (PMK) and values exchanged during the 4-Way Handshake. Therefore, even if the passphrase is cracked, an attacker must still capture the 4-Way Handshake for each target client in order to decrypt their unicast traffic.

Incorrect:

- A). Incorrect because cracking the passphrase allows decrypting data traffic after capturing the 4-Way Handshake.
- C). WPA2 encrypts multicast and broadcast traffic using the GTK, which unauthorized clients cannot derive.
- D). Capturing BSSID and MAC isn't enough without knowing the passphrase and the full 4-Way Handshake.
- E). Hijacking is harder in WPA2-Personal due to the dynamic PTK derived per session.

References:

CWSP-208 Study Guide, Chapter 3 (WPA2-PSK Key Management)

CWNP Learning: WLAN Encryption and PTK Derivation

NEW QUESTION # 52

Given: You view a protocol analyzer capture decode with the following protocol frames listed in the following order (excluding the ACK frames):

- 1) 802.11 Probe Request and 802.11 Probe Response
- 2) 802.11 Auth and another 802.11 Auth
- 2) 802.11 Assoc Req and 802.11 Assoc Rsp
- 4) EAPOL-Start
- 5) EAP Request and EAP Response
- 6) EAP Request and EAP Response
- 7) EAP Request and EAP Response
- 8) EAP Request and EAP Response
- 9) EAP Request and EAP Response
- 10) EAP Success
- 19) EAPOL-Key (4 frames in a row)

What are you seeing in the capture file? (Choose 4)

- A. 802.11 Open System authentication
- B. Active Scanning
- C. WPA2-Personal authentication
- D. 4-Way Handshake
- E. Wi-Fi Protected Setup with PIN
- F. WPA2-Enterprise authentication
- G. 802.1X with Dynamic WEP

Answer: A,B,D,F

Explanation:

A). WPA2-Enterprise authentication: The multiple EAP Request/Response exchanges followed by an EAP Success and a 4-Way Handshake (EAPOL-Key frames) indicate 802.1X authentication, characteristic of WPA2-Enterprise.

C). 802.11 Open System authentication: Two Auth frames (request and response) without encryption negotiation signify Open System Authentication - a default in RSN setups.

F). Active Scanning: Begins with Probe Request and Probe Response - part of an active scan process.

G). 4-Way Handshake: Identified by four sequential EAPOL-Key frames, completing the authentication process in WPA2.

References:

CWSP-208 Study Guide, Chapter 6 - Frame Analysis of Enterprise Authentication CWNP CWSP-208 Objectives: "EAP Authentication Flow" and "4-Way Handshake Analysis"

NEW QUESTION # 53

For a WIPS system to identify the location of a rogue WLAN device using location patterning (RF fingerprinting), what must be

done as part of the WIPS installation?

- A. A location chipset (GPS) must be installed with it.
- B. At least six antennas must be installed in each sensor.
- C. All WIPS sensors must be installed as dual-purpose (AP/sensor) devices.
- **D. The RF environment must be sampled during an RF calibration process.**

Answer: D

Explanation:

For a WIPS system to perform location patterning (also called RF fingerprinting), it must first perform an RF calibration or RF site survey. This process involves sampling signal strengths from known locations to develop a model of how signals propagate in the environment. This "fingerprint" is then used to triangulate or estimate the positions of rogue devices.

NEW QUESTION # 54

When using the 802.1X/EAP framework for authentication in 802.11 WLANs, why is the 802.1X Controlled Port still blocked after the 802.1X/EAP framework has completed successfully?

- A. The 802.1X Controlled Port is always blocked, but the Uncontrolled Port opens after the EAP authentication process completes.
- B. The 802.1X Controlled Port remains blocked until an IP address is requested and accepted by the Supplicant.
- **C. The 4-Way Handshake must be performed before the 802.1X Controlled Port changes to the unblocked state.**
- D. The 802.1X Controlled Port is blocked until Vendor Specific Attributes (VSAs) are exchanged inside a RADIUS packet between the Authenticator and Authentication Server.

Answer: C

Explanation:

The 802.1X Controlled Port remains blocked after EAP authentication is complete. It is only unblocked once the 4-Way Handshake completes successfully. This handshake:

Confirms that both client and AP have the same PMK.

Derives the PTK and installs keys.

Once encryption keys are in place, the Controlled Port is opened for data.

Incorrect:

A). The Controlled Port is what opens after successful authentication and key establishment.

B). IP addressing (via DHCP) happens after the Controlled Port is open.

D). Vendor-Specific Attributes may play a role in policy assignment but do not govern port control timing.

References:

CWSP-208 Study Guide, Chapter 4 (802.1X and Controlled Port Behavior)

IEEE 802.1X and 802.11 Standards

NEW QUESTION # 55

.....

Thousands of people will crowd into our website to choose the CWSP-208 study materials. So people are different from the past. Learning has become popular among different age groups. Our CWSP-208 guide questions truly offer you the most useful knowledge. You can totally trust us. We are trying our best to meet your demands. Why not give our CWSP-208 Practice Engine a chance? Our products will live up to your expectations.

New CWSP-208 Exam Cram <https://www.actualtestquiz.com/CWSP-208-test-torrent.html>

- CWSP-208 Learning Materials ☐ Learning CWSP-208 Mode ☐ CWSP-208 Reliable Exam Book ☐ Search for ► CWSP-208 ◀ on ► www.troytecdumps.com ☐ immediately to obtain a free download ☐ CWSP-208 Test Book
- CWSP-208 Exam Guide ☐ Simulations CWSP-208 Pdf ☐ CWSP-208 Passed ☐ Search for ☐ CWSP-208 ☐ and download it for free immediately on ☼ www.pdfvce.com ☐ ☼ ☐ CWSP-208 Valid Test Tutorial
- Quiz Authoritative CWSP-208 - Certified Wireless Security Professional (CWSP) Latest Exam Online ☐ Go to website ☼ www.prepawayexam.com ☐ ☼ ☐ open and search for ► CWSP-208 ◀ to download for free ☐ Learning CWSP-208 Mode
- CWSP-208 Learning Materials ☐ CWSP-208 Reliable Exam Book ☐ CWSP-208 Reliable Exam Book ☐ Open

- CWSP-208 Test Book ☐ Reliable CWSP-208 Test Labs ☐ CWSP-208 Passed ☐ Open ☐ www.prep4away.com ☐ enter “CWSP-208” and obtain a free download ☐ Reliable CWSP-208 Test Pass4sure
- CWSP-208 Training Materials - CWSP-208 Dumps PDF - CWSP-208 Exam Cram ☐ Download ☐ **【 CWSP-208 】** for free by simply entering ☒ www.pdfvce.com ☐ ☒ website ☐ CWSP-208 Test Book
- Actual CWSP-208 Test Material Makes You More Efficient - www.validtorrent.com ☐ Search for ☒ CWSP-208 ☐ ☒ and obtain a free download on ☐ www.validtorrent.com ☐ CWSP-208 Detailed Study Dumps
- Excellent CWSP-208 Latest Exam Online Covers the Entire Syllabus of CWSP-208 ☐ The page for free download of { CWSP-208 } on ☐ www.pdfvce.com ☐ will open immediately ☐ Learning CWSP-208 Mode
- Learning CWSP-208 Mode ☐ Valid CWSP-208 Test Notes ☐ Valid CWSP-208 Test Notes ☐ The page for free download of ☐ **【 CWSP-208 】** on ☒ www.troytecdumps.com ☐ ☒ will open immediately ☐ CWSP-208 Detailed Study Dumps
- Learning CWSP-208 Mode ☐ CWSP-208 Exam Guide ☐ Exam CWSP-208 Study Solutions ☐ Easily obtain free download of ☐ CWSP-208 ☐ by searching on ☒ www.pdfvce.com ☐ ☐ CWSP-208 Learning Materials
- CWSP-208 Test Torrent ☐ Simulations CWSP-208 Pdf ☐ Simulations CWSP-208 Pdf ☐ Download ☐ **【 CWSP-208 】** for free by simply searching on { www.vce4dumps.com } ☐ CWSP-208 Learning Materials
- www.stes.tyc.edu.tw, myportal.utt.edu.tw, myportal.utt.edu.tw, myportal.utt.edu.tw, myportal.utt.edu.tw, myportal.utt.edu.tw, myportal.utt.edu.tw, myportal.utt.edu.tw, myportal.utt.edu.tw, myportal.utt.edu.tw, club.creadom.co, edutech-masters.com, skillslibrary.in, www.stes.tyc.edu.tw, 35.233.194.39, www.myvrgame.cn, myportal.utt.edu.tw, myportal.utt.edu.tw, myportal.utt.edu.tw, myportal.utt.edu.tw, myportal.utt.edu.tw, myportal.utt.edu.tw, myportal.utt.edu.tw, myportal.utt.edu.tw, www.stes.tyc.edu.tw, Disposable vapes

P.S. Free 2026 CWNP CWSP-208 dumps are available on Google Drive shared by ActualTestsQuiz
<https://drive.google.com/open?id=1Ne5CRy1i9eo0x3zW6FHijynrPqLHNPUX>