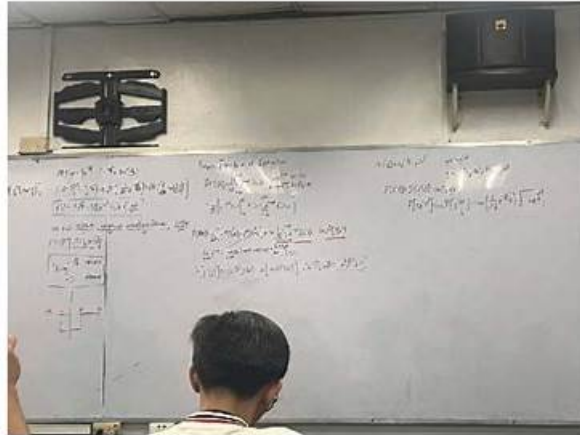


C_BW4H_2505 Reliable Exam Topics | Exam C_BW4H_2505 Certification Cost



P.S. Free & New C_BW4H_2505 dumps are available on Google Drive shared by PassTestking: <https://drive.google.com/open?id=1aeQlpTX0lYm3KZfDSO-em5dJy7H-zLuz>

Our PDF format is great for those who prefer to print out the questions. SAP C_BW4H_2505 dumps come in a downloadable PDF format that you can print out and prepare at your own pace. The PDF works on all smart devices, which means you can go through SAP C_BW4H_2505 Dumps at your convenience. The ability to print out the C_BW4H_2505 PDF dumps enables users who find it easier and more comfortable than working on a computer.

If you prefer to Practice C_BW4H_2505 Exam dumps on paper, you can try the exam dumps of us. C_BW4H_2505 PDF version is printable, and you can take some notes on it and can practice them anytime. Besides through using C_BW4H_2505 e questions and answers of us, you can pass the exam and get a certificate successfully. We offer you pass guarantee and money back guarantee if you fail to pass the exam. Once you have made your decision, just add them into your cart and pay for it, we will send the downloading link in ten minutes.

>> C_BW4H_2505 Reliable Exam Topics <<

Exam C_BW4H_2505 Certification Cost & C_BW4H_2505 Valid Exam Simulator

We have dedicated staff to update all the content of C_BW4H_2505 exam questions every day. So you don't need to worry about that you buy the materials so early that you can't learn the last updated content. And even if you failed to pass the exam for the first time, as long as you decide to continue to use C_BW4H_2505 torrent prep, we will also provide you with the benefits of free

updates within one year and a half discount more than one year. C_BW4H_2505 Test Guide use a very easy-to-understand language. So even if you are a newcomer, you don't need to worry that you can't understand the contents. Industry experts hired by C_BW4H_2505 exam questions also explain all of the difficult professional vocabulary through examples, forms, etc. You can completely study alone without the help of others.

SAP Certified Associate - Data Engineer - SAP BW/4HANA Sample Questions (Q24-Q29):

NEW QUESTION # 24

What should you consider when you set the High Cardinality flag for a characteristic? Note: There are 2 correct answers to this question.

- A. You cannot use navigation attributes for this characteristic.
- B. You cannot load more than 2 billion master data records for this characteristic.
- C. You cannot use this characteristic as an external characteristic in hierarchies.
- D. You cannot use this characteristic as a navigation attribute for another characteristic.

Answer: A,D

Explanation:

In SAP BW/4HANA, the High Cardinality flag is used to optimize the handling of characteristics with a very large number of distinct values (e.g., transaction IDs, timestamps). However, enabling this flag imposes certain restrictions on how the characteristic can be used. Below is an explanation of the correct answers and why they are valid.

* A. You cannot use this characteristic as a navigation attribute for another characteristic.

* When the High Cardinality flag is set, the characteristic cannot serve as a navigation attribute for another characteristic. Navigation attributes are used to provide additional descriptive information for a characteristic, but high-cardinality characteristics are not suitable for this purpose due to their large size and potential performance impact.

* SAP BW/4HANA enforces this restriction to ensure optimal performance and avoid excessive memory consumption during query execution.

B). You cannot use navigation attributes for this characteristic.

Similarly, a characteristic with the High Cardinality flag cannot have navigation attributes assigned to it.

Navigation attributes add complexity and increase the volume of data processed during reporting, which is incompatible with the optimization goals of high-cardinality characteristics.

Reference: SAP BW/4HANA restricts the use of navigation attributes for high-cardinality characteristics to maintain efficient query performance.

Incorrect Options: C. You cannot load more than 2 billion master data records for this characteristic.

This statement is incorrect. The High Cardinality flag is specifically designed to handle characteristics with very large numbers of distinct values, including scenarios where the number of master data records exceeds 2 billion.

Reference: SAP BW/4HANA supports high-cardinality characteristics to manage massive datasets efficiently, leveraging SAP HANA's in-memory capabilities.

D). You cannot use this characteristic as an external characteristic in hierarchies.

While high-cardinality characteristics are not typically used in hierarchies due to their size and complexity, there is no explicit restriction preventing them from being used as external characteristics in hierarchies.

Reference: SAP BW/4HANA allows high-cardinality characteristics to be included in hierarchies, but their usage should be carefully evaluated to avoid performance issues.

Conclusion: The correct answers are A. You cannot use this characteristic as a navigation attribute for another characteristic and B.

You cannot use navigation attributes for this characteristic, as these restrictions are imposed to optimize performance and memory usage for high-cardinality characteristics in SAP BW/4HANA.

NEW QUESTION # 25

Why do you set the Read Access Type to "SAP HANA View" in an SAP BW/4HANA InfoObject?

- A. To generate an SAP HANA calculation view data category Dimension
- B. To report master data attributes which are defined in calculation views
- C. To enable parallel loading of master data texts
- D. To use the InfoObject as an association within an Open ODS view

Answer: A

Explanation:

When the Read Access Type is set to "SAP HANA View" for an InfoObject in SAP BW/4HANA:

* SAP HANA Calculation View Generation:

* This setting enables the generation of an SAP HANA calculation view of the data category Dimension for the InfoObject.

* The view allows seamless integration and use of the InfoObject in other HANA-native modeling scenarios.

* Purpose:

* To enhance data access and leverage SAP HANA's performance for analytics and modeling.

References:

SAP BW/4HANA InfoObject Configuration Documentation

SAP HANA Modeling Guide

NEW QUESTION # 26

Which data deletion options are offered for a Standard DataStore Object (advanced)? Note: There are 3 correct answers to this question.

- A. Selective deletion of data
- B. Request-based data deletion
- C. Selective deletion including data of subsequent targets
- D. Deletion of data from all tables
- E. Deletion of all data from active table only

Answer: A,D,E

NEW QUESTION # 27

Which tasks require access to the BW bridge cockpit? Note: There are 2 correct answers to this question.

- A. Create source systems
- B. Create transport requests
- C. Create communication systems
- D. Set up Software components

Answer: C,D

Explanation:

* BW Bridge Cockpit: The BW Bridge Cockpit is a central interface for managing the integration between SAP BW/4HANA and SAP Datasphere (formerly SAP Data Warehouse Cloud). It provides tools for setting up software components, communication systems, and other configurations required for seamless data exchange.

* Tasks in BW Bridge Cockpit:

* Software Components: These are logical units that encapsulate metadata and data models for transfer between SAP BW/4HANA and SAP Datasphere. Setting them up requires access to the BW Bridge Cockpit.

* Communication Systems: These define the connection details (e.g., host, credentials) for external systems like SAP Datasphere. Creating or configuring these systems is done in the BW Bridge Cockpit.

* Transport Requests: These are managed within the SAP BW/4HANA system itself, not in the BW Bridge Cockpit.

* Source Systems: These are configured in the SAP BW/4HANA system using transaction codes like RSA1, not in the BW Bridge Cockpit.

* A. Create transport requests: This task is performed in the SAP BW/4HANA system using standard transport management tools (e.g., SE09, SE10). It does not require access to the BW Bridge Cockpit.

Incorrect.

* B. Set up Software components: Software components are essential for transferring metadata and data models between SAP BW/4HANA and SAP Datasphere. Setting them up requires access to the BW Bridge Cockpit. Correct.

* C. Create source systems: Source systems are configured in the SAP BW/4HANA system using transaction RSA1 or similar tools. This task does not involve the BW Bridge Cockpit. Incorrect.

* D. Create communication systems: Communication systems define the connection details for external systems like SAP Datasphere. Configuring these systems is a key task in the BW Bridge Cockpit.

Correct.

* B: Setting up software components is a core function of the BW Bridge Cockpit, enabling seamless integration between SAP BW/4HANA and SAP Datasphere.

* D: Creating communication systems is another critical task in the BW Bridge Cockpit, as it ensures proper connectivity with external systems.

References: SAP BW/4HANA Integration Documentation: The official documentation outlines the role of the BW Bridge Cockpit in

managing software components and communication systems.

SAP Note on BW Bridge Cockpit: Notes such as 3089751 provide detailed guidance on tasks performed in the BW Bridge Cockpit.

SAP Best Practices for Hybrid Integration: These guidelines highlight the importance of software components and communication systems in hybrid landscapes.

By leveraging the BW Bridge Cockpit, administrators can efficiently manage the integration between SAP BW/4HANA and SAP Datasphere.

NEW QUESTION # 28

What does a Composite Provider allow you to do in SAP BW/4HANA? Note: There are 3 correct answers to this question.

- A. Join two ABAP CDS views.
- B. Create new calculated fields.
- C. Combine InfoProviders using Joins Unions.
- D. Define new restricted key figures.
- E. Integrate SAP HANA calculation views.

Answer: B,C,D

Explanation:

A Composite Provider in SAP BW/4HANA is a powerful modeling object that allows you to combine multiple InfoProviders (such as DataStore Objects, InfoCubes, and others) into a single logical entity for reporting and analytics purposes. It provides flexibility in integrating data from various sources within the SAP BW

/4HANA environment. Below is a detailed explanation of why the correct answers are B, C, and E:

* Incorrect: While ABAP CDS (Core Data Services) views are a part of the SAP HANA ecosystem, Composite Providers in SAP BW/4HANA do not directly support joining ABAP CDS views. Instead, Composite Providers focus on combining InfoProviders like ADSOs (Advanced DataStore Objects), InfoCubes, or other Composite Providers. If you need to integrate ABAP CDS views, you would typically use SAP HANA calculation views or expose them via external tools.

Option A: Join two ABAP CDS views

* Correct: One of the key capabilities of a Composite Provider is the ability to create calculated fields.

These fields allow you to define new metrics or attributes based on existing fields from the underlying InfoProviders. For example, you can calculate a profit margin by dividing revenue by cost. This functionality enhances the analytical capabilities of the Composite Provider.

Option B: Create new calculated fields

* Correct: Composite Providers also allow you to define restricted key figures. Restricted key figures are used to filter data based on specific criteria, such as restricting sales figures to a particular region or product category. This feature is essential for creating focused and meaningful reports.

Option C: Define new restricted key figures

* Incorrect: While SAP HANA calculation views are widely used for modeling in the SAP HANA environment, Composite Providers in SAP BW/4HANA do not natively integrate these views. Instead, SAP BW/4HANA focuses on its own modeling objects like ADSOs and InfoCubes. However, you can use Open ODS views to integrate SAP HANA calculation views into the BW/4HANA environment.

Option D: Integrate SAP HANA calculation views

* Correct: Composite Providers are specifically designed to combine multiple InfoProviders using joins and unions. Joins allow you to merge data based on common keys, while unions enable you to append data from different sources. This flexibility makes Composite Providers a central tool for integrating data across various InfoProviders in SAP BW/4HANA.

Option E: Combine InfoProviders using Joins Unions

* SAP BW/4HANA Modeling Guide: The official documentation highlights the role of Composite Providers in combining InfoProviders and enabling advanced calculations and restrictions.

* SAP Help Portal: The portal provides detailed information on the differences between Composite Providers and other modeling objects, emphasizing their integration capabilities.

* SAP Data Fabric Architecture: In the context of SAP Data Fabric, Composite Providers align with the goal of providing unified access to data across diverse sources, ensuring seamless integration and analysis.

References to SAP Data Engineer - Data Fabric Concepts By understanding the functionalities and limitations of Composite Providers, you can effectively leverage them in SAP BW/4HANA to meet complex business requirements.

NEW QUESTION # 29

.....

BTW, DOWNLOAD part of PassTestking C_BW4H_2505 dumps from Cloud Storage: <https://drive.google.com/open?id=1aeQlpTX0lYm3KZfDSO-em5dJy7H-zLnz>