

OGA-032 Exam Outline & OGA-032 Valid Dumps Sheet

Passitcertify updated study material for OGA-032 Exam Questions: Secret to Success

Passitcertify offers study material for OGA-032 Exam Dumps in two formats,

- PDF: In PDF you will find actual exam questions for The Open Group OGA-032 exam. All the material is designed by experts and ensure your success. You will get exam related question to uproot them, which otherwise you will face. The PDF for Open Group ArchiMate OGA-032 exam can easily be downloaded and read. The study material for OGA-032 exam is conveniently portable.
- Practice Exam Software: Our Practice Exams' platform offers you a practical examination scenario for The Open Group OGA-032 Exam. It's an integrated platform which allows you to select questions, time slot and provides you an opportunity to gauge your own understanding about ArchiMate Accrediation.

<https://www.passitcertify.com/the-open-group/oga-032-questions.html>

Passitcertify

In addition to our The Open Group OGA-032 exam questions, we also offer a The Open Group Practice Test engine. This engine contains real OGA-032 practice questions designed to help you get familiar with the actual OGA-032 Exam Pattern. Our ArchiMate 3 Part 2 Exam exam practice test engine will help you gauge your progress, identify areas of weakness, and master the material.

The Open Group OGA-032 (ArchiMate 3 Part 2) Certification Exam is a globally recognized certification program that is designed for enterprise architects, IT professionals, and business analysts who are involved in enterprise architecture development, implementation, and governance. ArchiMate 3 Part 2 Exam certification exam is aimed at validating the knowledge and skills required to use the ArchiMate 3 language for enterprise architecture modeling and analysis. ArchiMate 3 Part 2 Exam certification exam is the second part of the ArchiMate 3 certification program and focuses on advanced level knowledge and skills.

>> OGA-032 Exam Outline <<

OGA-032 Exam Outline Exam | OGA-032 Valid Dumps Sheet – 100% free

In order to prevent your life from regret and remorse, you should seize every opportunity which can change lives passibly. Did you do it? ITdumpsfree's The Open Group OGA-032 exam training materials can help you to achieve your success. We can help you pass the The Open Group OGA-032 Exam smoothly. In order not to let success pass you by, do it quickly.

The Open Group ArchiMate 3 Part 2 Exam Sample Questions (Q17-Q22):

NEW QUESTION # 17

Please read this scenario prior to answering the question

A global retail company operates an Order Fulfillment process supported by three core applications: Order Management System (OMS), Warehouse Management System (WMS), and Shipping Coordinator.

The OMS captures orders and stores them in an Order Database. The WMS manages inventory using an Inventory Database. The Shipping Coordinator schedules shipments and generates tracking notifications.

These applications run on virtual machines hosted on a hypervisor cluster. Each VM connects to redundant LAN switches and stores data on centralized SAN storage.

Refer to the scenario.

You are required to model how applications and technology support the Order Fulfillment process, including application behavior, data access, and hosting infrastructure.

Which of the following answers provides the most complete model?

- A. Model Order Fulfillment as a Capability realized directly by Technology Services.
- B. Model databases as Technology Devices without showing application access.
- C. Model Order Fulfillment as a Business Process served by Application Services, realized by Application Functions

executed by Application Components, accessing Data Objects, deployed on Virtual Nodes connected via Communication Networks to Storage Devices.

- D. Model only the three applications as Application Components associated with a Node representing the cloud.

Answer: C

NEW QUESTION # 18

Please read this scenario prior to answering the question

The IT Operations (IT Ops) department at ArchiSurance has five core responsibilities, each encompassing a dedicated business process: (1) Batch Operations (Batch Ops), (2) Online Operations (Online Ops), (3) Security Operations (Security Ops), (4) User Support and (5) Continuous Improvement. Service level agreements (SLAs) are in place for Batch Ops and Online Ops, and each Ops process generates monitoring data that is utilized by the Continuous Improvement process.

The System Ops category consists of Batch Ops, Online Ops, and Security Ops, each having an incident management sub-process. These sub-processes are triggered by Batch, Online, and Security Incidents, respectively. In the initial stages of the incident management sub-processes, an Incident Alert is shared with the System Ops processes by posting it to the Alert Buffer.

Batch Ops relies on a schedule that outlines all batch jobs and their dependencies. This schedule serves two sub-processes: Batch Planning, which updates the schedule for use by the Execution Management sub-process.

The Batch Ops process relies on a suite of interconnected applications to facilitate its operations.

Among these applications, the Batch Scheduler plays a vital role by allowing users to manage a comprehensive database of jobs, job schedules, and dependencies. It effectively launches batch jobs according to the information stored in the database.

Working in conjunction with the Batch Scheduler, the Batch Monitor application utilizes the job schedules as a reference point to monitor job execution. It identifies any exceptional conditions that may arise during the execution process. To ensure effective handling of these exceptions, the Batch Monitor communicates the information to both the Batch Scheduler and the Incident Handler applications through the previously mentioned Alert Buffer.

The Incident Handler application operates based on a defined set of business rules. It uses these rules to determine the relevant systems and individuals that need to be notified in the event of each incident. Subsequently, the Incident Handler application generates appropriate notifications according to these determinations.

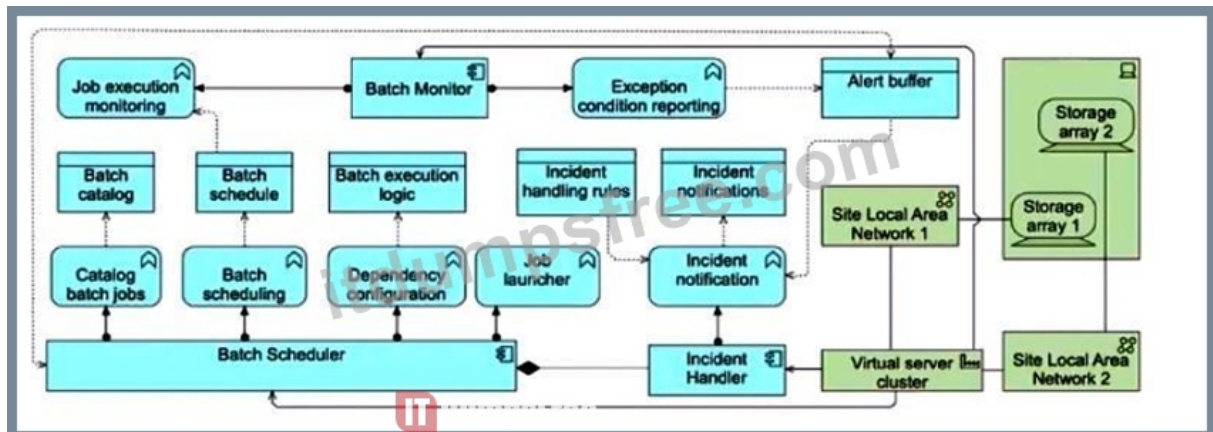
Recognizing the criticality of the Batch Scheduler, Batch Monitor, and Incident Handler applications, ArchiSurance has implemented redundant hosting arrangements across multiple geographically distributed data centers. In each data center, these three applications are supported by fully redundant virtual server clusters. Each cluster is connected to two site local area networks, both of which are further linked to separate storage array hardware devices.

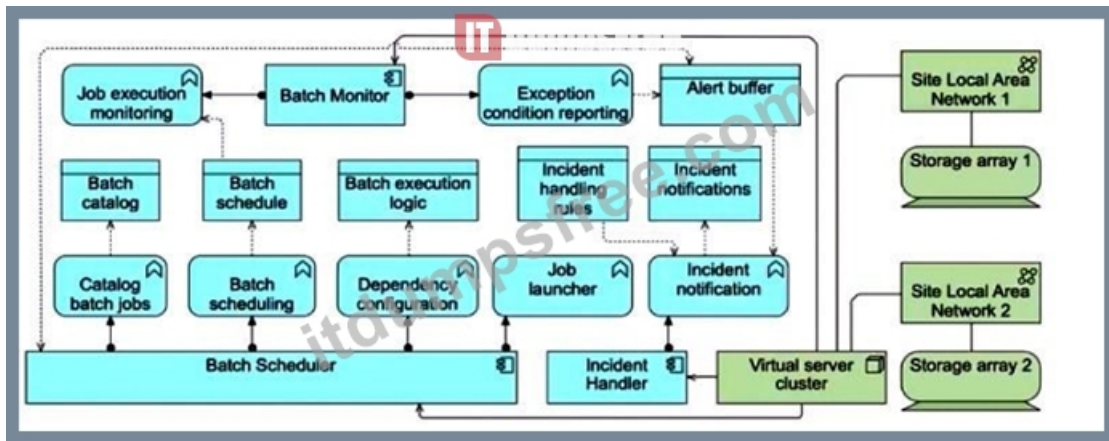
Refer to the scenario

As part of an IT service management initiative, you have been assigned the task to show how applications and technology support the Batch Ops process. This should show the relationships between the applications, their functions, the data they access, and the technology that hosts the applications and data, along with the networks that connect the servers. It is only necessary to model a single data center.

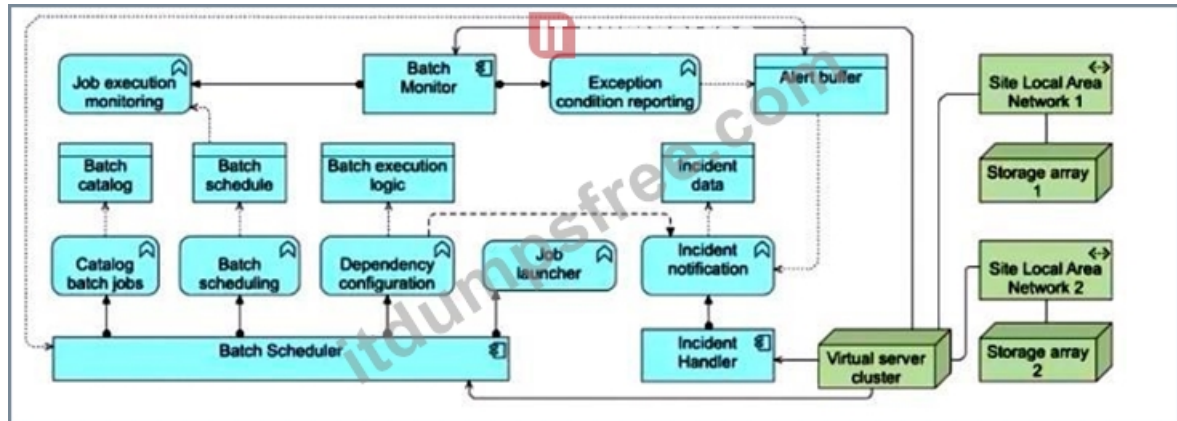
Which of the following answers provides the most complete and accurate model?

- A.



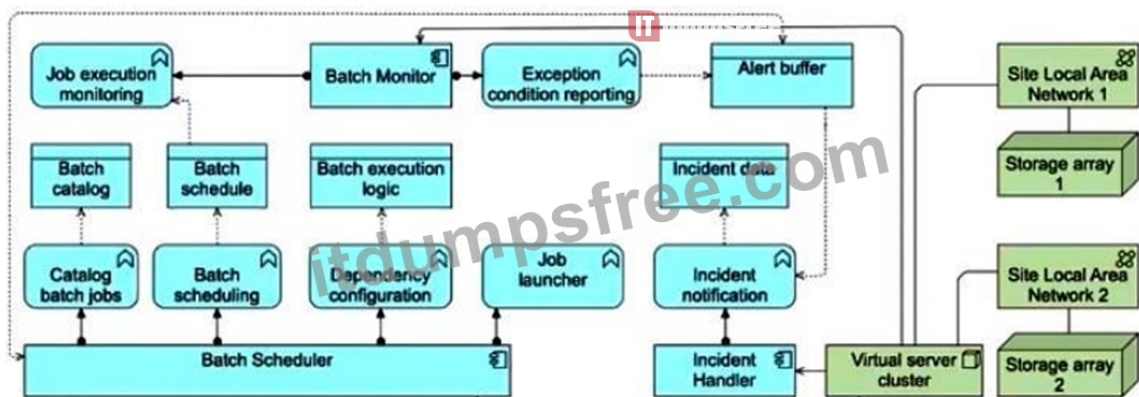


• B.



• C.

• D.



Answer: B

Explanation:

This diagram is the only one that:

- Shows all three application components - the Batch Scheduler, Batch Monitor and Incident Handler - as nodes offering services, each with their own behavior (the rectangular functions) and the data objects they read/write (batch catalog, batch schedule, batch execution logic, incident handling rules, incident notifications).
- Captures the end-to-end flow from job scheduling, through monitoring and exception reporting, into the alert buffer and on to incident handling.
- Models the technology correctly:
 - A single Virtual server cluster node hosting all three apps.
 - Two Site Local Area Network technology-network elements, each linking that cluster to its redundant Storage array nodes.
 - Limits the view to one data center, as requested.

NEW QUESTION # 19

Please read this scenario prior to answering the question

The ArchiSurance enterprise document management solution includes a sophisticated ecosystem of applications and technologies.

Designed with a strong emphasis on high availability, it plays a vital role in providing support for a diverse range of document types and managing a substantial volume of document-based transactions on a daily basis. Recognizing its importance to the business, the document management solution is redundantly hosted at two geographically separate data center sites, both configured identically for seamless operations.

The system software at the core of the document management solution is comprised of three key modules. The Document Engine serves as a repository, facilitating document storage, retrieval, and various other operations. The Workflow Engine acts as a host for document management applications, while the Application Engine powers the most advanced and sophisticated applications within the system.

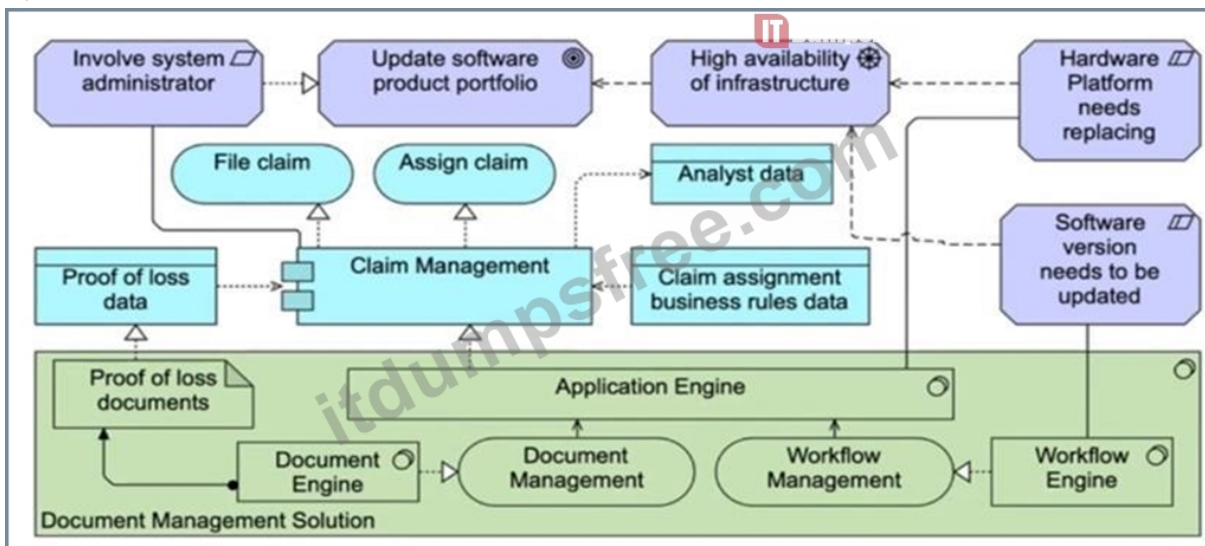
Two key factors have driven the Architecture Board's approval of a project aimed at updating this critical solution. Firstly, the supplier of the Workflow Engine has given notice of the end of support for the current software version, necessitating an upgrade. Secondly, the system administrator responsible for the Application Engine has flagged the need for hardware replacement on the server where the software is currently running. Given that the Claim Management application shares infrastructure with the Application Engine, the involvement of the system administrator responsible for this application is crucial in the project planning and execution.

Refer to the Scenario

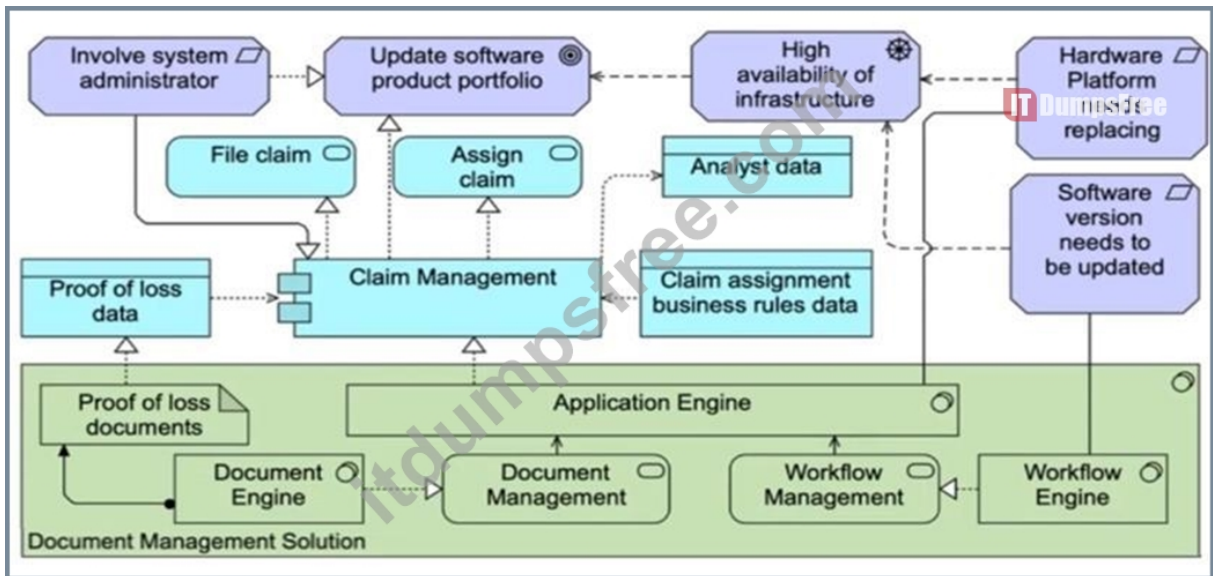
You are the Enterprise Architect within this organization. You have been assigned the task of modeling the applications and technology for this solution, as well as outlining the motivations driving the need for its update.

Based on the scenario, which answer provides the most complete and accurate description?

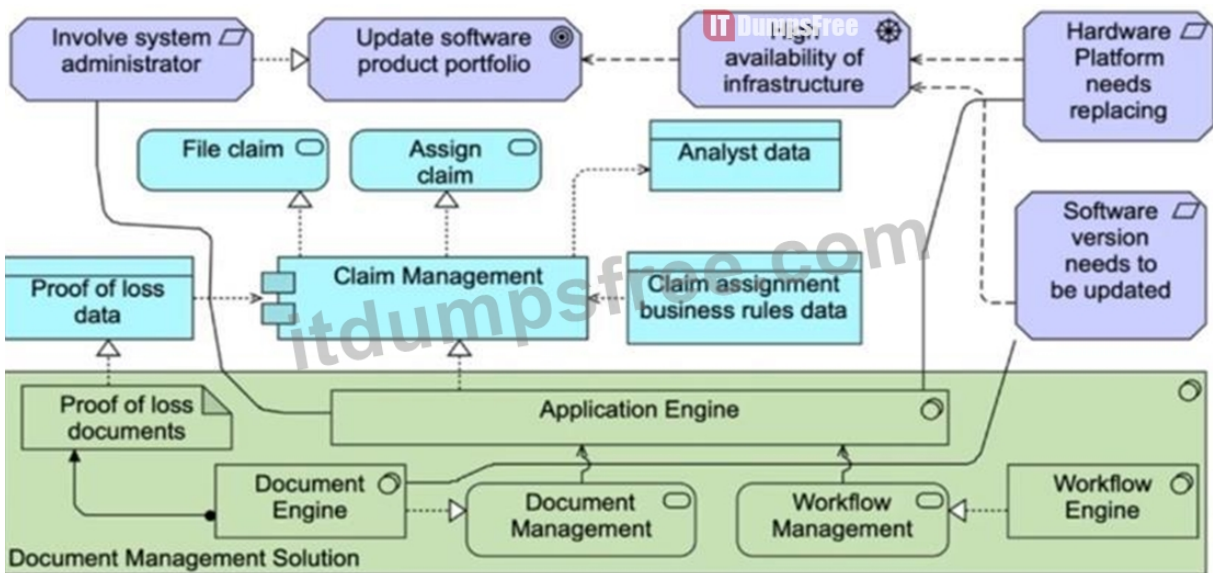
- A.



- B.
- C.



• D.



Answer: A

Explanation:

Chosen option provides the most complete and accurate representation according to the scenario:

It clearly models the motivations (e.g., "Involve system administrator," "Update software product portfolio," "High availability of infrastructure," "Hardware platform needs replacing," "Software version needs to be updated") and their relationships, capturing both the software and hardware motivations driving the project.

The business layer is represented with processes/services ("File claim," "Assign claim"), and the supporting data objects are linked appropriately (e.g., "Proof of loss data," "Analyst data," "Claim assignment business rules data").

The application layer accurately shows the main components ("Claim Management," "Application Engine," "Document Engine," "Document Management," "Workflow Management," "Workflow Engine") and their interactions, which reflects the described architecture of the document management solution.

The technology layer is represented by the green background (Document Management Solution), which contains the application components as described, showing how infrastructure supports application services.

Relationships between all layers (motivation, business, application, and technology) are clearly modeled, allowing for end-to-end traceability from motivation to implementation.

NEW QUESTION # 20

Please read this scenario prior to answering the question

ArchiSurance has decided to leverage its financial expertise by offering defined contribution retirement plans.

Each trading day, ArchiSurance submits consolidated mutual fund trading transactions to a stock exchange on behalf of its retirement

plan participants.

The daily mutual fund trading cycle consists of four key processes: Transaction capture, pricing, trading and reconciliation.

Transaction capture consists of two sub-processes: manual exchange and loans and distributions (L&D). For transaction capture, retirement plan participants use an online account management application to enter manual fund exchange transactions. For L&D, plan participants use a separate application to enter requests. The L&D application determines whether the request can be fulfilled based on the mutual fund balances held in each plan balances and a set of business rules. Each day's captured manual exchange transactions accumulate in a transaction database.

ArchiSurance contracts with a third-party information service to receive a file of mutual fund prices at the close of each trading day. The pricing application uses this file to convert captured transaction into trades, and then validates each trade against the mutual fund balances held in each plan. The pricing application generates a trade file with the minimum number of trades necessary. The trading application sends this file to an external trading service.

When the trading application

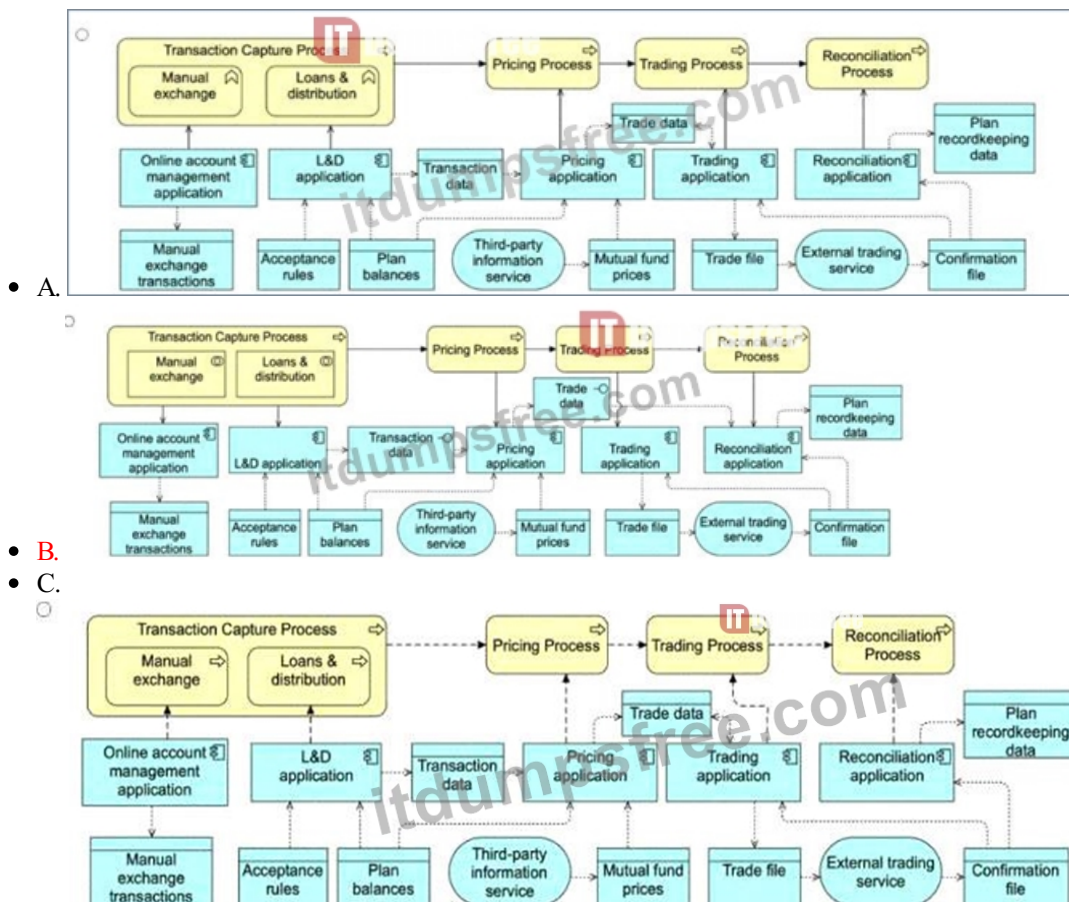
receives a confirmation file back from the trading service, it causes the reconciliation application to update the plan recordkeeping database.

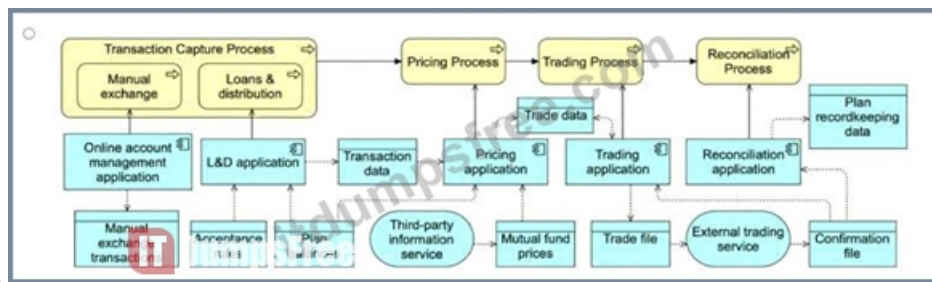
The account management and L&D applications are hosted on separate application server clusters. Each cluster is a physically separate host that runs application server software on a set of virtualized hosts. All of these applications use a database server infrastructure that is hosted on another separate cluster of virtualized servers also on a dedicated physical host. The pricing, consolidation, trading and reconciliation applications, however, are batch applications that run on the ArchiSurance mainframe computer. All application hosts are connected via a converged data center network (DCN), which also connects them to a storage area network (SAN) as well as a wide area network (WAN) that is used to communicate with the external trading service. The SAN includes two physically separate storage arrays, one of which holds data for all databases, and another that holds data for all files.

Refer to the Scenario

The systems analysts would like to better understand the business processes and applications for daily fund trading. You have been asked to describe the business processes and sub-processes, the applications that they use, the data objects accessed by those applications, and the external application services that access some of those data objects.

Which of the following is the best answer? Note that you are not required to model the business actors/roles.





• D.

Answer: B

Explanation:

In this scenario, the goal is to model the business processes, their sub-processes, the applications supporting these processes, and the data objects these applications access. Additionally, external services that access some of these data objects need to be shown. This includes capturing the key processes and their dependencies, as well as understanding how the applications interact with data and external services.

Key ArchiMate® 3.2 Concepts Applied:

* **Business Processes and Sub-Processes:**

* **Transaction Capture Process:** Consists of two sub-processes:

* **Manual Exchange**

* **Loans & Distribution (L&D)** This process is responsible for capturing transactions from users through different applications (Online Account Management, L&D Application).

* **Pricing Process:** This process uses the Mutual Fund Prices from a third-party service and the Plan Balance to validate and price trades.

* **Trading Process:** This process generates a Trade File and interacts with an external Trading Service.

* **Reconciliation Process:** This final process updates the Plan Recordkeeping Data after confirming trades from the External Trading Service.

* **Applications and Data:**

* **Online Account Management Application and L&D Application:** These capture user inputs for transactions and maintain Transaction Data and Plan Balances.

* **Pricing Application:** Uses Mutual Fund Prices and Transaction Data to generate Trade Data.

* **Trading Application:** Submits Trade Data and receives a Confirmation File from the external Trading Service.

* **Reconciliation Application:** Uses the Confirmation File to update Plan Recordkeeping Data.

* **External Application Services:**

* **Third-Party Information Service:** Provides Mutual Fund Prices.

* **External Trading Service:** Processes trades and returns a Confirmation File.

* **Data Objects:**

* **Transaction Data:** Captured by the transaction capture processes.

* **Mutual Fund Prices:** Received from the third-party service.

* **Trade Data:** Generated by the pricing and trading applications.

* **Plan Recordkeeping Data:** Updated by the reconciliation process after trade confirmation.

Why Option B is Correct:

* **Option B** provides the most complete and accurate representation of the scenario. It captures the business processes (Transaction Capture, Pricing, Trading, Reconciliation) and their sub-processes, while showing the appropriate connections to the applications that support these processes.

* It clearly depicts the data objects (Transaction Data, Plan Balances, Trade File, Mutual Fund Prices, Plan Recordkeeping Data) and their flows between the processes and applications.

* The model also includes the external services (Third-Party Information Service and External Trading Service), showing how these interact with the internal applications and data objects.

* It accurately represents the flow of Trade Data from the Pricing Application to the Trading Application, and the use of Mutual Fund Prices by the Pricing Process.

Why Other Options Are Incorrect:

* **Option A** and **Option D** miss some critical connections between the applications and the external services. They also lack clarity in how the data flows between the processes and applications.

* **Option C** does not adequately represent the interaction between the applications and the external services (e.g., Third-Party Information Service), which is a key requirement in this scenario.

Conclusion:

Option B provides the best and most accurate description of the business processes, applications, data objects, and external services involved in ArchiSurance's daily fund trading operations, following ArchiMate® 3.2 standards for modeling business processes and applications.

NEW QUESTION # 21

Please read this scenario prior to answering the question

A financial institution runs a Loan Approval process supported by a Loan Processing application and a Risk Assessment application. The Loan Processing application evaluates loan data using Business Rules stored in a Rules Repository. Risk Assessment retrieves credit scores from an external API.

Both applications run on virtual application servers connected to internal and external networks.

Refer to the scenario.

Which answer is most complete?

- A. Model Loan Approval as a Business Process served by Application Services realized by Application Functions accessing Data Objects (Loan Request, Risk Report, Business Rules), deployed on Virtual Nodes connected via Communication Networks.
- B. Use association relationships only to show credit bureau integration.
- C. Model everything only in the Technology Layer.
- D. Model only application components.

Answer: A

NEW QUESTION # 22

.....

The The Open Group OGA-032 certification exam is one of the hottest certifications in the market. This The Open Group OGA-032 exam offers a great opportunity to learn new in-demand skills and upgrade your knowledge level. By doing this successful OGA-032 ArchiMate 3 Part 2 Exam exam candidates can gain several personal and professional benefits.

OGA-032 Valid Dumps Sheet: <https://www.itdumpsfree.com/OGA-032-exam-passed.html>

- OGA-032 Exam Outline Exam Pass For Sure | The Open Group OGA-032: ArchiMate 3 Part 2 Exam Simply search for ➡ OGA-032 for free download on { www.troytecdumps.com } Exam Sample OGA-032 Online
- Trustworthy OGA-032 Exam Content OGA-032 Valid Exam Forum OGA-032 Exam Braindumps Download OGA-032 for free by simply entering [www.pdfvce.com] website Latest OGA-032 Exam Book
- OGA-032 Materials OGA-032 New Real Test OGA-032 Reliable Dumps Ebook Open ➡ www.torrentvce.com enter ✓ OGA-032 ✓ and obtain a free download New OGA-032 Exam Price
- OGA-032 New Real Test Trustworthy OGA-032 Exam Content OGA-032 Exam Braindumps Enter 【 www.pdfvce.com 】 and search for ➡ OGA-032 to download for free Latest OGA-032 Exam Book
- OGA-032 New Real Test OGA-032 Valid Exam Forum Latest OGA-032 Exam Book Immediately open ➡ www.dumpsmaterials.com and search for ✓ OGA-032 ✓ to obtain a free download OGA-032 New Dumps Ppt
- New OGA-032 Exam Price OGA-032 Examcollection Questions Answers Latest OGA-032 Exam Book Easily obtain ➤ OGA-032 for free download through www.pdfvce.com Cost Effective OGA-032 Dumps
- Latest OGA-032 Exam Book OGA-032 Latest Exam Labs Cost Effective OGA-032 Dumps Go to website ➡ www.pdfdumps.com open and search for { OGA-032 } to download for free OGA-032 Reliable Dumps Ebook
- OGA-032 Reliable Dumps Ebook OGA-032 Valid Exam Forum OGA-032 Valid Exam Vce The page for free download of 【 OGA-032 】 on ▶ www.pdfvce.com ◀ will open immediately Reliable OGA-032 Braindumps Pdf
- OGA-032 Exam Outline Pass Certify| High-quality OGA-032 Valid Dumps Sheet: ArchiMate 3 Part 2 Exam Copy URL ✓ www.troytecdumps.com ✓ open and search for ➡ OGA-032 to download for free OGA-032 Valid Exam Forum
- Quiz Pass-Sure The Open Group - OGA-032 Exam Outline Easily obtain free download of ✨ OGA-032 ✨ by searching on 《 www.pdfvce.com 》 Exam Sample OGA-032 Online
- OGA-032 New Dumps Ppt OGA-032 Reliable Dumps Ebook OGA-032 Valid Exam Vce Search for { OGA-032 } and download it for free immediately on 「 www.examcollectionpass.com 」 OGA-032 Test Collection Pdf
- www.stes.tyc.edu.tw, flynrebbq639665.tnpwiki.com, lancellvx309327.life-wiki.com, bizlinkdirectory.com, socialrator.com, networkbookmarks.com, cormacyutx348910.blog2news.com, simbadirectory.com, deborahiwsc177156.59bloggers.com, monicamopw674541.bcbloggers.com, Disposable vapes