

Valid CompTIA 220-1101 Study Guide & 220-1101 Latest Exam Tips

CompTIA A+ 220-1101 Core 1 Study Guide With 100% Correct Answers | Verified

Local Area Network (LAN) CORRECT ANSWERS A network that covers a relatively small area such as a building or group of buildings
(1.1 & 2.7)

Personal Area Network (PAN) CORRECT ANSWERS - Provides communication for devices owned by a single user that work over a short distance
- Bluetooth, IR, NFC, etc.
(1.1 & 2.7)

LCD (Liquid Crystal Display) CORRECT ANSWERS Lightweight & Inexpensive - Poor black levels due to Separate Backlight
(1.2)

TN (twisted nematic) CORRECT ANSWERS Fast response Times - Low cost - Low Power Use - Limited Viewing Angles
(1.2)

IPS (In Plane Switching) CORRECT ANSWERS Better Colors - Better Viewing Angles - More Expensive
(1.2)

OLED (organic light-emitting diode) CORRECT ANSWERS Thinner & Brighter - No Need for Backlight
(1.2)

MDM (mobile device management) CORRECT ANSWERS - Manage company & user devices
- Centralized management system
- Ensures device security
(1.4)

MAM (mobile application management) CORRECT ANSWERS - Set policies & restrictions on apps
- Control Company software (Update, Remove, Etc.)
(1.4)

PRL (Preferred Roaming List) CORRECT ANSWERS - Allows phone to connect to the right tower
(1.4)

BTW, DOWNLOAD part of Fast2test 220-1101 dumps from Cloud Storage: <https://drive.google.com/open?id=1hZl5Zj-Q6S7l8Bl2TTSE43mQJUXRvMN8>

The 220-1101 dumps of Fast2test include valid CompTIA A+ Certification Exam: Core 1 (220-1101) questions PDF and customizable 220-1101 practice tests. Our 24/7 customer support provides assistance to help 220-1101 Dumps users solve their technical hitches during their test preparation. The 220-1101 exam questions of Fast2test come with up to 365 days of free updates and a free demo.

CompTIA 220-1101 Exam is ideal for individuals who are looking to start a career in the IT industry. 220-1101 exam is also suitable for professionals who have experience in the field and want to enhance their skills and knowledge. Additionally, this certification is beneficial for individuals who are looking to advance their careers in IT support, help desk, and technical support roles.

>> Valid CompTIA 220-1101 Study Guide <<

TOP Valid 220-1101 Study Guide: CompTIA A+ Certification Exam: Core 1 - The Best CompTIA 220-1101 Latest Exam Tips

Customers first are our mission, and we will try our best to help all of you to get your 220-1101 certification. We offer you the best

valid and latest CompTIA 220-1101 study practice, thus you will save your time and study with clear direction. Besides, we provide you with best safety shopping experience. The Paypal system will guard your personal information and keep it secret. In addition, the high pass rate will ensure you pass your 220-1101 Certification with high score.

CompTIA A+ Certification Exam: Core 1 Sample Questions (Q675-Q680):

NEW QUESTION # 675

A technician needs to configure a multifunction printer that will be used to scan highly confidential data, which must be securely distributed to a select group of executives. Which of the following options is the most secure way to accomplish this task?

- A. Set up the device to email the documents to a group address.
- **B. Configure scanning to an SMB share with executive access.**
- C. Make copies of the documents and have an office administrator manually distribute them.
- D. Implement badge access on the printer.

Answer: B

Explanation:

Configuring scanning to a Secure Message Block (SMB) share specifically designated for executive access ensures that the scanned confidential documents are stored securely on a network drive with restricted access.

SMB is a network file sharing protocol that allows applications on a computer to read and write to files and request services from server programs in a computer network. By setting up an SMB share with executive access, the data is centralized, making it easier to manage permissions and security settings. This method also utilizes the existing network infrastructure, allowing for scalability and integration with other security measures like encryption and authentication protocols.

References:

* CompTIA A+ Certification Exam Core 1 and Core 2 Objectives Documents

NEW QUESTION # 676

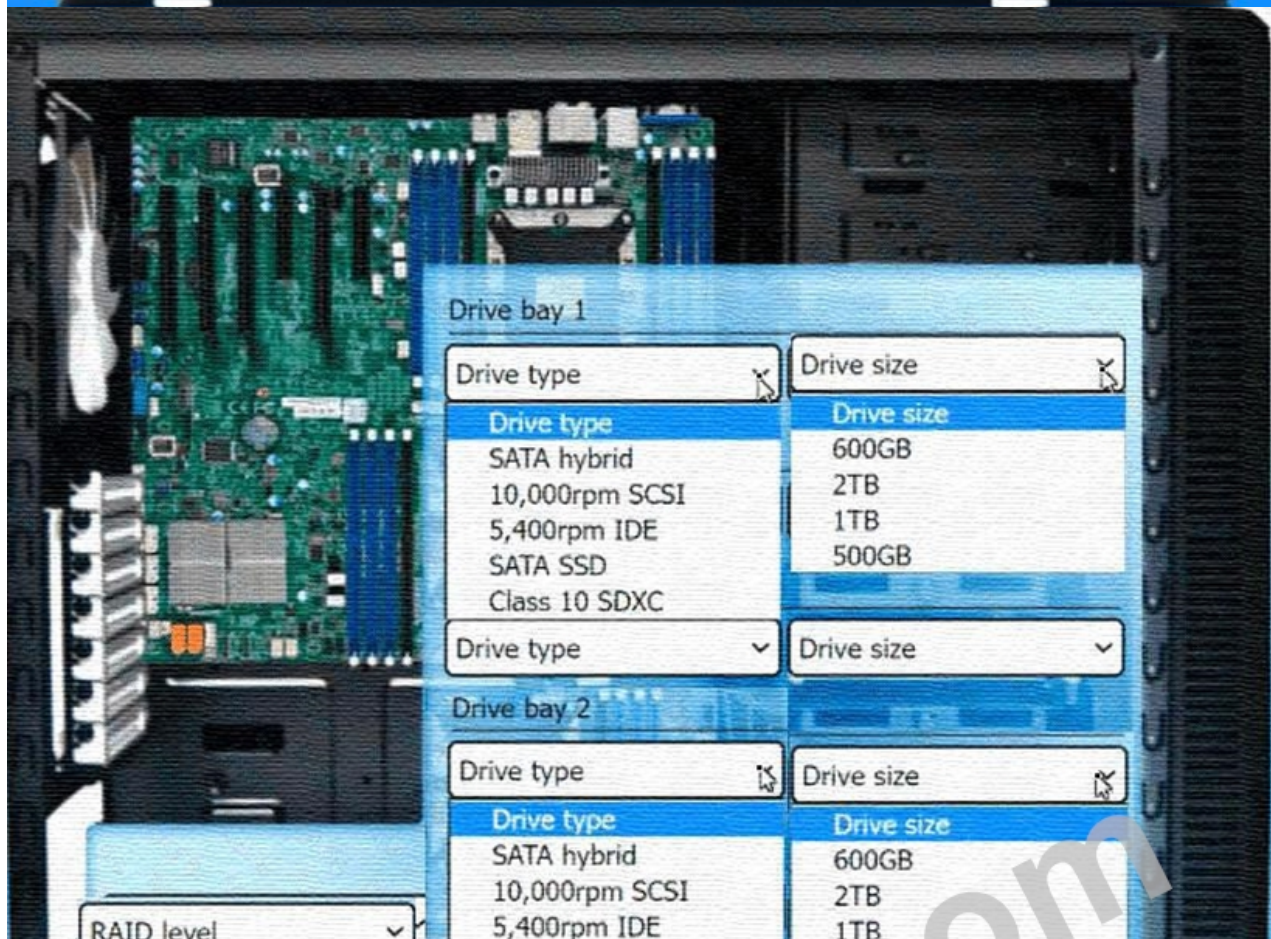
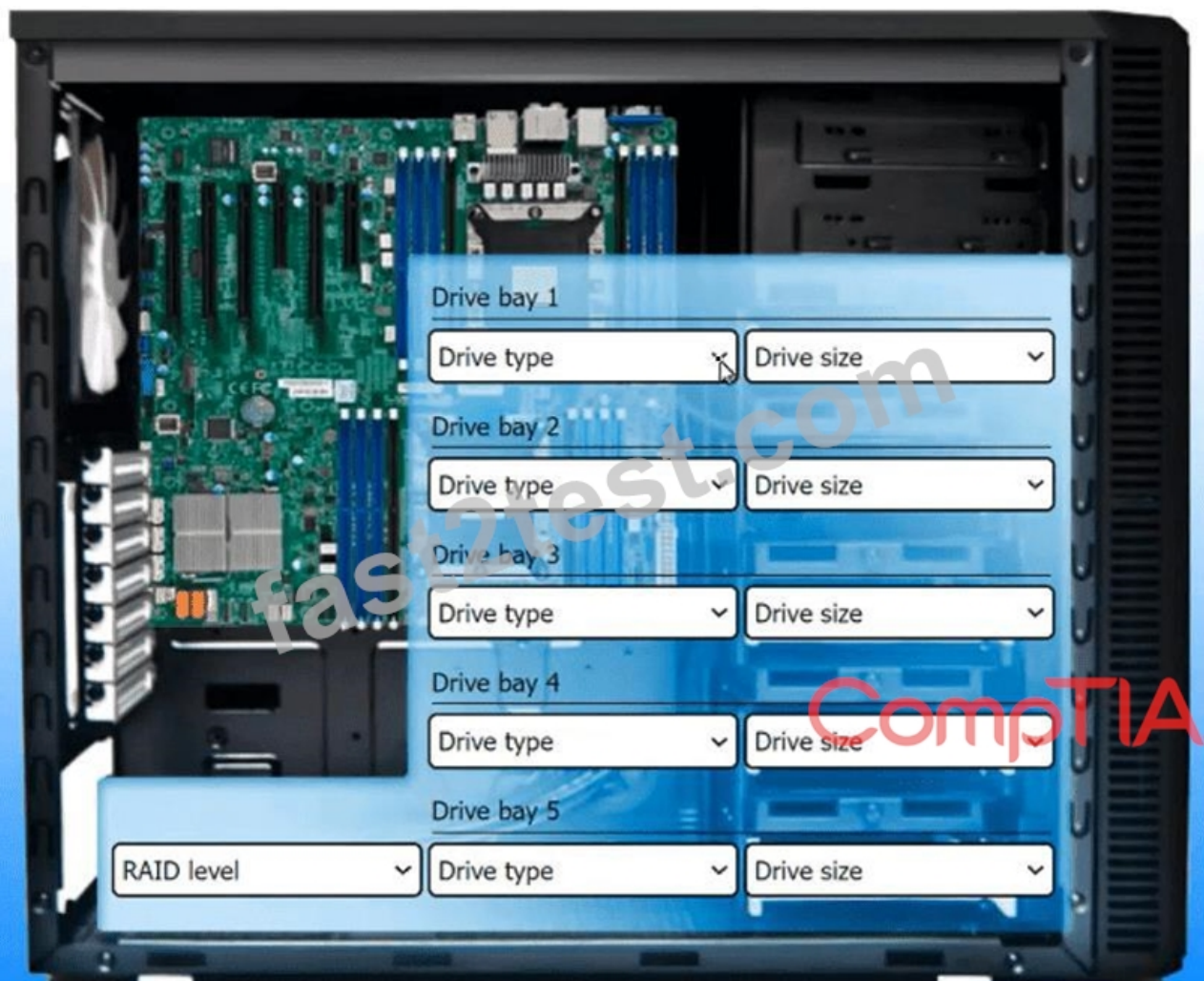
A technician is setting up a video-editing workstation and the operating system is already installed on an internal M.2 drive.

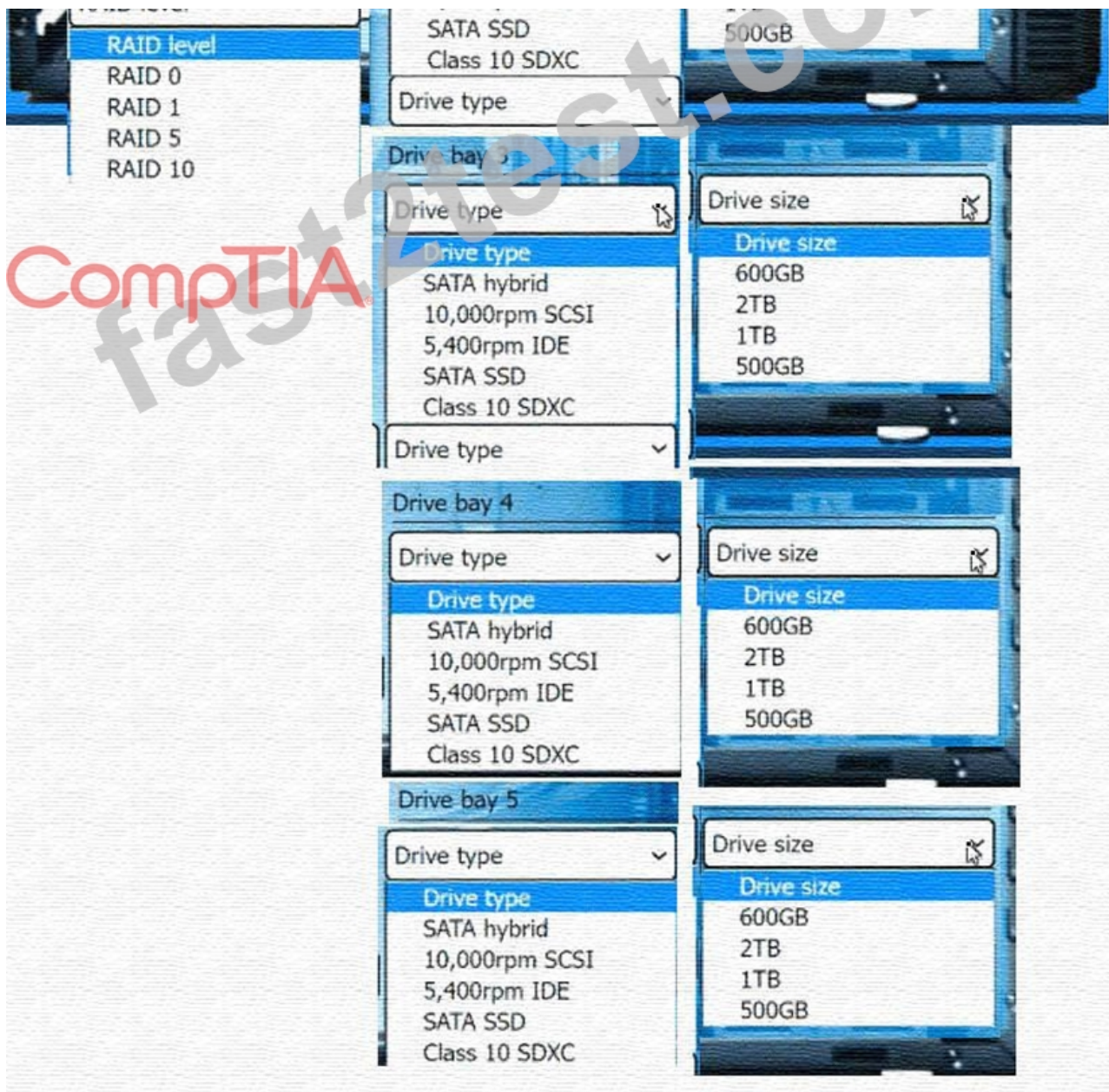
The new workstation must meet the following requirements:

- . Be able to edit files at the fastest speed
- . Allow for disk failure without any downtime
- Have 2TB of usable space
- . Ensure the most robust fault tolerance

INSTRUCTIONS

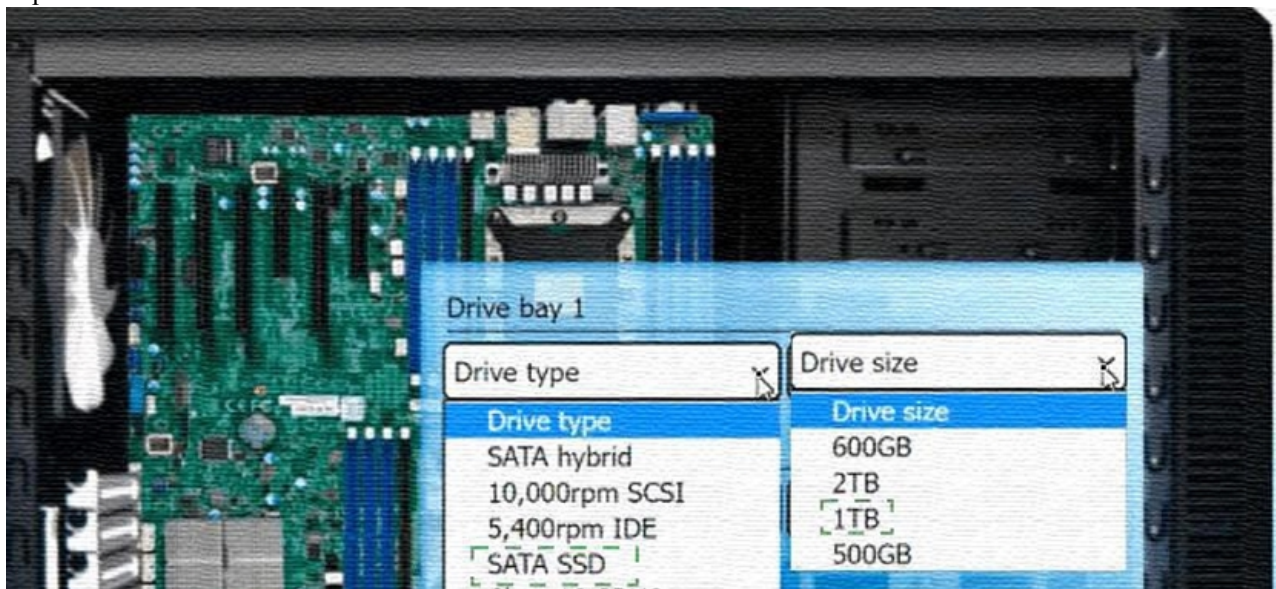
Use the drop-down menus to select the appropriate RAID level, drive types, and drive sizes based on the requirements above. For each drive type that is selected, a corresponding drive size must also be selected.

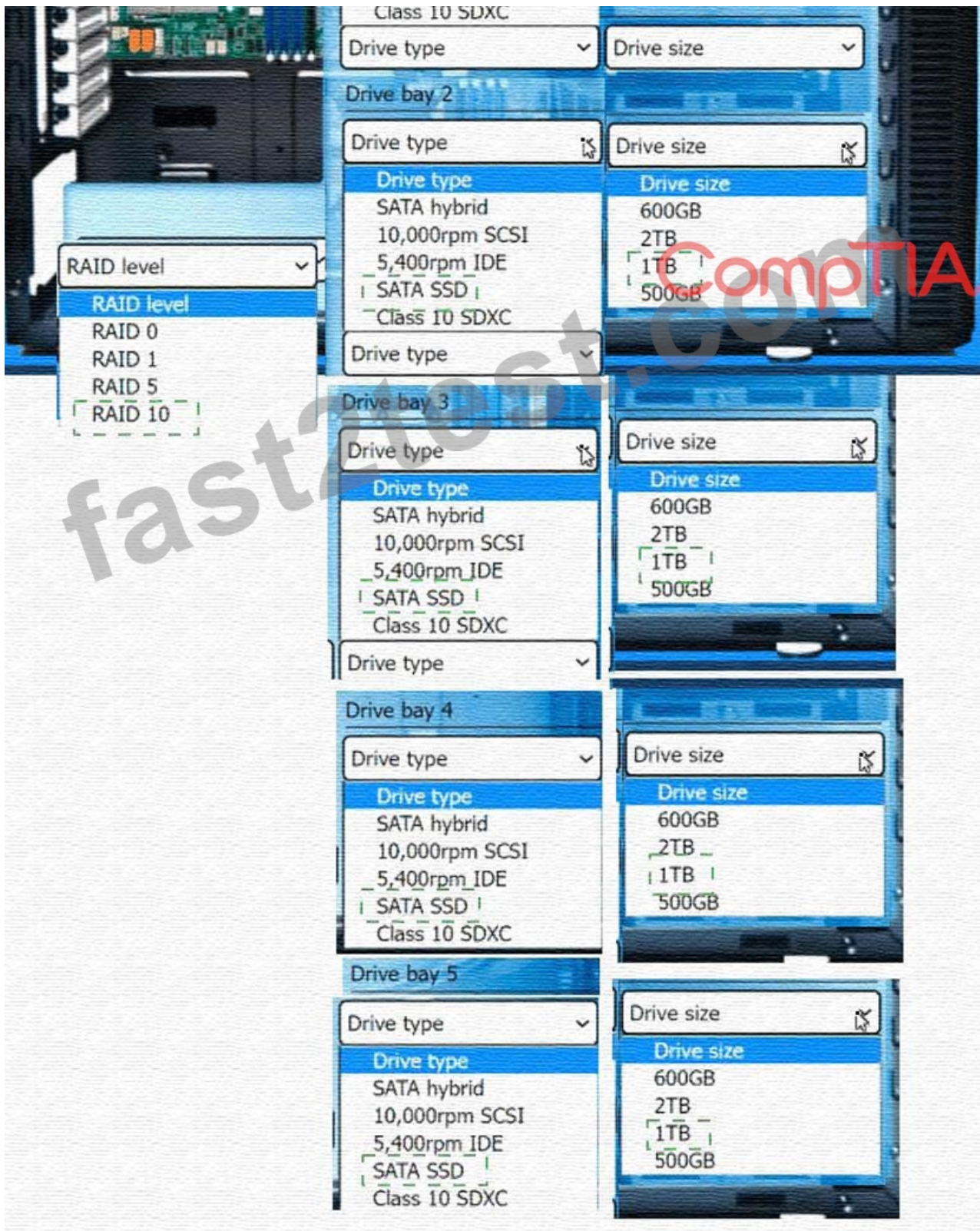




Answer:

Explanation:





Explanation:

Based on the requirements, the best option for the video-editing workstation is to use RAID 10 with four SATA SSDs of 1TB each. This configuration will meet the following requirements:

Be able to edit files at the fastest speed: RAID 10 combines the advantages of RAID 0 and RAID 1, which are striping and mirroring, respectively. Striping can increase the data transfer rate by using multiple disks in parallel, while mirroring can provide redundancy and reliability by duplicating the data on another set of disks. SATA SSDs are also faster than HDDs or SSHDs, as they use flash memory instead of spinning disks, and they can offer lower latency, higher IOPS, and less noise and heat.

Allow for disk failure without any downtime: RAID 10 can withstand up to two disk failures, as long as they are not in the same mirrored pair. If one disk fails, the data can be read from or written to the other disk in the same pair, without affecting the performance or availability of the array. The failed disk can be replaced and rebuilt without interrupting the operation of the workstation.

Have 2TB of usable space: RAID 10 uses half of the total disk capacity for mirroring, so the usable space is equal to the size of two disks. By using four SATA SSDs of 1TB each, the total disk capacity is 4TB, and the usable space is 2TB, which meets the requirement.

Ensure the most robust fault tolerance: RAID 10 offers the highest level of fault tolerance among the standard RAID levels, as it can survive multiple disk failures and provide fast recovery. RAID 10 also has a low overhead, as it does not use parity or checksums, which can slow down the write performance or increase the complexity of the array.

Therefore, the technician should select the following options from the drop-down menus:

RAID level: RAID 10

Drive type 1: SATA SSD

Drive size 1: 1TB

Drive type 2: SATA SSD

Drive size 2: 1TB

Drive type 3: SATA SSD

Drive size 3: 1TB

Drive type 4: SATA SSD

Drive size 4: 1TB

Drive type 5: SATA SSD

Drive size 5: 1TB

NEW QUESTION # 677

A technician is receiving reports that the entire office sporadically loses network connectivity throughout the day. The technician determines the root cause to be EMI. Which of the following cable mediums would be the MOST cost effective without sacrificing system performance?

- A. Multimode fiber
- B. Coaxial
- C. Shielded Cat 6
- D. Plenum Cat 5e

Answer: C

NEW QUESTION # 678

Which of the following would be BEST reason to use a virtual machine as a sandbox?

- A. To run multiple machines on the same hardware
- B. To test new software in a safe environment
- C. To have dedicated hardware for a single system
- D. To increase the efficient use of computing resources

Answer: B

NEW QUESTION # 679

A technician needs to configure a firewall to enable network printing. Which of the following network ports should be opened? (Select two)

- A. 631 (IPP)
- B. 25 (SMTP)
- C. LPT1
- D. 515 (LDP)
- E. 22 (Telnet)
- F. 21 (FTP)

Answer: A,D

Explanation:

To enable network printing, the firewall needs to open the ports that are used by the network printers and the print servers. Two common ports for network printing are 515 (LDP) and 631 (IPP). LDP stands for Line Printer Daemon Protocol, which is a TCP-

based protocol for sending print jobs to a remote printer. IPP stands for Internet Printing Protocol, which is a HTTP-based protocol for managing and monitoring print jobs over the Internet. According to the CompTIA Core1 objectives, one of the network ports that is related to printing is

NEW QUESTION # 680

People who get 220-1101 certification show dedication and willingness to work hard, also can get more opportunities in job hunting. It seems that 220-1101 certification becomes one important certification for many IT candidates. While a good study material will do great help in 220-1101 Exam Preparation. Fast2test 220-1101 will solve your problem and bring light for you. 220-1101 exam questions and answers are the best valid with high hit rate, which is the best learning guide for your CompTIA 220-1101 preparation.

- [illegible]