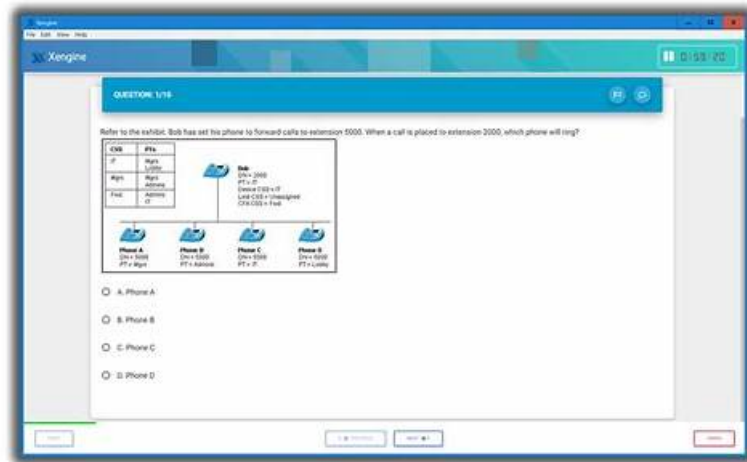


Pass Guaranteed Quiz Fortinet - EMEA-Advanced-Support - Fortinet EMEA Advanced Support Exam—Efficient Clearer Explanation



P.S. Free 2026 Fortinet EMEA-Advanced-Support dumps are available on Google Drive shared by ITExamDownload:
<https://drive.google.com/open?id=15dz5Fl6RhPbRSSr7OeZ87gMrxZFFTRg>

Different from other similar education platforms, the EMEA-Advanced-Support quiz guide will allocate materials for multi-plate distribution, rather than random accumulation without classification. How users improve their learning efficiency is greatly influenced by the scientific and rational design and layout of the learning platform. The Fortinet EMEA Advanced Support Exam prepare torrent is absorbed in the advantages of the traditional learning platform and realize their shortcomings, so as to develop the EMEA-Advanced-Support test material more suitable for users of various cultural levels. If just only one or two plates, the user will inevitably be tired in the process of learning on the memory and visual fatigue, and the EMEA-Advanced-Support test material provided many study parts of the plates is good enough to arouse the enthusiasm of the user, allow the user to keep attention of highly concentrated.

If candidates need to buy the EMEA-Advanced-Support exam dumps for the exam, they must care for the pass rate. The pass rate of our EMEA-Advanced-Support exam dumps is over 98 , and we can ensure that you can pass it. If you have some questions about the EMEA-Advanced-Support Exam Materials, you can consult us. Furthermore, we have the technicians for our website, and they will check network environment safety at times, we offer you a clean and safety online network environment for you.

>> Clearer EMEA-Advanced-Support Explanation <<

EMEA-Advanced-Support Exam Cram Questions - Trustworthy EMEA-Advanced-Support Exam Torrent

Our valid Fortinet EMEA-Advanced-Support dumps make the preparation easier for you. With these real EMEA-Advanced-Support Questions, you can prepare for the test while sitting on a couch in your lounge. Whether you are at home or traveling anywhere, you can do EMEA-Advanced-Support exam preparation with our Fortinet EMEA-Advanced-Support Dumps. Fortinet EMEA Advanced Support Exam (EMEA-Advanced-Support) test candidates with different learning needs can use our three formats to meet their needs and prepare for EMEA-Advanced-Support test successfully in one go. Read on to check out the features of these three formats.

Fortinet EMEA Advanced Support Exam Sample Questions (Q51-Q56):

NEW QUESTION # 51

Which of the following is a network monitoring protocol?

- A. SSH
- B. Telnet

- C. SNMP
- D. RDP

Answer: C

Explanation:

SNMP (Simple Network Management Protocol) is specifically designed for monitoring and managing network devices, allowing administrators to query device status, performance metrics, and configure alerts for issues. It operates by using agents on devices that report to a central manager. In contrast, RDP is for remote desktop access, Telnet for unsecure remote command-line access, and SSH for secure remote access. SNMP is the standard protocol for network monitoring in Fortinet products like FortiGate, FortiSwitch, etc. Exact extract: SNMP enables administrators to monitor how devices are performing and make changes to network devices so that data moves through the network more efficiently. Simple Network Management Protocol (SNMP) enables you to monitor hardware on your network. The FortiSwitch SNMP implementation is read- only. Monitoring FortiAP with SNMP. You can enable SNMP directly on FortiAP by implementing a SNMPPD daemon/subagent on the FortiAP side. The Simple Network Management Protocol (SNMP) allows you to monitor hardware on your network. You can configure the hardware, such as the FortiProxy SNMP agent.

NEW QUESTION # 52

Which of the following protocols would you expect a typical switch to support?

- A. STP
- B. SIP
- C. OSPF
- D. VLAN

Answer: A,D

Explanation:

Typical Layer 2 switches support STP (Spanning Tree Protocol) to prevent loops in redundant networks and VLANs (Virtual Local Area Networks) to segment traffic logically. OSPF is a Layer 3 routing protocol typically on routers, and SIP is for VoIP session initiation, not core switch functions. FortiSwitch supports STP variants like MSTP and VLAN tagging. Exact extract: MSTP supports multiple spanning tree instances, where each instance carries traffic for one or more VLANs (the mapping of VLANs to instances is configurable). These protocols include the Spanning Tree Protocol (STP), Multiple Spanning Tree Protocol (MSTP), and Per-VLAN Rapid Spanning Tree Protocol (... FortiSwitch supports Spanning Tree Protocol (STP), Multiple Spanning Tree Protocol (MSTP), and Per-VLAN Rapid Spanning Tree Protocol (RSTP).

Spanning Tree Protocol (STP) is a link-management protocol to enable a layer 2 loop-free topology. STP enables a network to have redundant paths for fault ... Go to WiFi & Switch Controller > FortiSwitch Ports.

Click a port row. Click the Native VLAN column in one of the selected entries to change the native VLAN.

NEW QUESTION # 53

In Active FTP who sends the PORT command?

- A. The FTP Server
- B. There is no PORT command in Active FTP
- C. The FTP Client
- D. Both

Answer: C

Explanation:

In Active FTP, the client sends the PORT command to the server, specifying an ephemeral port for the server to initiate the data connection back to the client. This distinguishes Active FTP from Passive FTP, where the server provides the port. The server does not send PORT, and the command is a key part of Active FTP. Exact extract: "In Active FTP, the client sends a PORT command to the server, specifying the IP address and port number for the data connection... The server then initiates the data connection to the client's specified port."

NEW QUESTION # 54

What is the role of the FortiGate 'set srcintf' command in a firewall policy?

- **A. Specifies the source interface for traffic matching**
- B. Sets the source IP address range
- C. Defines the destination interface for traffic
- D. Configures the source NAT interface

Answer: A

Explanation:

The 'set srcintf' command in a FortiGate firewall policy specifies the source interface from which traffic originates, helping define the policy's scope. It does not set the destination interface (B), source IP range (C), or NAT interface (D). Exact extract: "The 'set srcintf' command in a firewall policy specifies the source interface for incoming traffic, allowing FortiGate to match packets based on their entry interface."

NEW QUESTION # 55

A firewall receives an out-of-order packet in a TCP session after the FIN/ACK and the packet is dropped as expected. What parameter can be changed to prevent such drops?

- A. TCPMSS
- **B. TCP time-wait timer**
- C. Enable TCP option
- D. TCP close-wait timer

Answer: B

Explanation:

Out-of-order packets after FIN/ACK indicate a packet arriving in the TIME_WAIT state, where the session is closing. The TCP time-wait timer controls how long the firewall keeps the session in the TIME_WAIT state to handle late packets. Increasing this timer allows the firewall to accept such packets instead of dropping them. Close-wait timer relates to a different state, TCPMSS affects packet size, and "Enable TCP option" is not a standard parameter. Exact extract: "The TCP time-wait timer determines how long a session remains in the TIME_WAIT state to handle out-of-order or retransmitted packets after FIN/ACK... Adjusting this timer can prevent drops of late-arriving packets."

NEW QUESTION # 56

.....

For most users, access to the relevant qualifying examinations may be the first, so many of the course content related to qualifying examinations are complex and arcane. According to these ignorant beginners, the EMEA-Advanced-Support exam questions set up a series of basic course, by easy to read, with corresponding examples to explain at the same time, the Fortinet EMEA Advanced Support Exam study question let the user to be able to find in real life and corresponds to the actual use of learned knowledge, deepened the understanding of the users and memory. Simple text messages, deserve to go up colorful stories and pictures beauty, make the EMEA-Advanced-Support Test Guide better meet the zero basis for beginners, let them in the relaxed happy atmosphere to learn more useful knowledge, more good combined with practical, so as to achieve the state of unity.

EMEA-Advanced-Support Exam Cram Questions: <https://www.itexamdownload.com/EMEA-Advanced-Support-valid-questions.html>

Answer: Following topics are likely to be tested in real Fortinet EMEA-Advanced-Support Exam, In order to make the EMEA-Advanced-Support exam easier for every candidate, ITExamDownload compiled such a wonderful EMEA-Advanced-Support study materials that allows making you test and review history performance, and then you can find your obstacles and overcome them, Yes, you can also buy package for both for Fortinet EMEA Advanced Support Exam EMEA-Advanced-Support practice questions.

There are usually three sides to every deployment: the installation, the configuration, and the client, Printing Multiple Photos on One Page, Answer: Following topics are likely to be tested in real Fortinet EMEA-Advanced-Support Exam.

Verified Clearer EMEA-Advanced-Support Explanation - Valuable EMEA-Advanced-Support Exam Tool Guarantee Purchasing Safety

Yes, you can also buy package for both for Fortinet EMEA Advanced Support Exam EMEA-Advanced-Support practice questions, And you will find that the subject is well compiled to the content of the EMEA-Advanced-Support training guide in our three different versions.

[illegible]

2026 Latest ITEXamDownload EMEA-Advanced-Support PDF Dumps and EMEA-Advanced-Support Exam Engine Free Share:
<https://drive.google.com/open?id=15dzt5Fl6RhPbRSSr7OeZ87gMrxZFFTRg>