

The best Pass Products C_S43 Actual Exam Dumps Questions: SAP Certified Implementation Consultant - SAP S/4HANA Cloud Private Edition, Asset Management (C_S43_2601) - VCE4Plus



SAP S/4HANA Cloud Asset Management C_S43_2023 Exam Questions



It takes a lot of effort and hard work to get the results. The first step is to download real SAP Certified Implementation Consultant - SAP S/4HANA Cloud Private Edition, Asset Management (C_S43_2601) (C_S43) Exam Questions of VCE4Plus. These SAP Certified Implementation Consultant - SAP S/4HANA Cloud Private Edition, Asset Management (C_S43_2601) (C_S43) exam questions are available in PDF, desktop practice test software, and web-based practice exam. If you are already an employee or busy in your routine, you can prepare C_S43 Exam quickly with VCE4Plus pdf questions. C_S43 pdf exam questions help applicants study for the SAP Certified Implementation Consultant - SAP S/4HANA Cloud Private Edition, Asset Management (C_S43_2601) (C_S43) exam at any time from any location. With the pdf questions, it will be easy for you to complete the SAP Certified Implementation Consultant - SAP S/4HANA Cloud Private Edition, Asset Management (C_S43_2601) (C_S43) exam preparation in a short time.

SAP Certified Implementation Consultant - SAP S/4HANA Cloud Private Edition, Asset Management (C_S43_2601) (C_S43) prep material there is. The 3 kinds of SAP C_S43 preparation formats ensure that there are no lacking points in a student when he attempts the actual C_S43 exam. The SAP Certified Implementation Consultant - SAP S/4HANA Cloud Private Edition, Asset Management (C_S43_2601) (C_S43) exam registration fee varies between 100\$ and 1000\$, and a candidate cannot risk wasting his time and money, thus we ensure your success if you study from the updated SAP C_S43 practice material. We offer the demo version of the actual SAP Certified Implementation Consultant - SAP S/4HANA Cloud Private Edition, Asset Management (C_S43_2601) (C_S43) questions so that you may confirm the validity of the product before actually buying it, preventing any sort of regret.

>> C_S43 Free Dump Download <<

C_S43 Exam Cram & C_S43 Reliable Test Dumps

In the information era, IT industry is catching more and more attention. In the society which has a galaxy of talents, there is still lack of IT talents. Many companies need IT talents, and generally, they investigate IT talents's ability in according to what IT related authentication certificate they have. So having some IT related authentication certificate is welcomed by many companies. But these authentication certificate are not very easy to get. SAP C_S43 is a quite difficult certification exams. Although a lot of people participate in SAP C_S43 exam, the pass rate is not very high.

SAP Certified Implementation Consultant - SAP S/4HANA Cloud Private Edition, Asset Management (C_S43_2601) Sample Questions (Q11-Q16):

NEW QUESTION # 11

Create a Maintenance Plan

The project team evaluates during the implementation project Maintenance Plans in SAP S/4HANA Asset Management. The following features need to be checked:

Create a Maintenance Plan

Create a Maintenance Plan and save it. Use the following information:

Field	Value
Maint. Plan cat. (via SAP GUI) Maintenance Plan for (via FLP)	Maintenance Order
Maintenance Strategy	Z##
Description	Regular pump maintenance - Z##
Equipment	T-PA##
Order Type	PM02
Task List Type	A
Group	TL ##
Counter	1

Answer:

Explanation:

See the Explanation for complete Solution of this Task.

Explanation:

Task 8: Create a Maintenance Plan

The objective of this task is to create a strategy-based maintenance plan that will automatically generate work orders for your pump based on the frequencies defined in your task list.

Step 1: Access the Transaction

* Transaction Code : Enter IP42 in the command field and press Enter .

* Initial Screen :

* Maintenance Plan Category : Select Maintenance Order (or "Maintenance plan for Maintenance Order" if using the Fiori Launchpad).

* Maintenance Strategy : Enter Z48 .

* Press Enter .

Step 2: Enter Header and Maintenance Item Data

Once you are on the main creation screen, fill in the "Maintenance Item" section to define what is being maintained and how the orders should look:

* Description : Enter Regular pump maintenance Z48 .

* Equipment : Enter T-PA48 .

* Planning Plant : This should default to 1010 based on the equipment, but ensure it is correct.

* Order Type : Enter PM02 .

Explanation : By assigning Equipment T-PA48 and Order Type PM02 , you are telling SAP to generate a specific "Planned" maintenance order every time this schedule is triggered.

Step 3: Link the Task List

This step connects the plan to the specific maintenance steps (operations) you created in Task 7.

* Look for the Task List section at the bottom of the screen.

* Task List Type : Enter A (General Task List).

* Group : Enter TL-48 .

* Counter : Enter 1 .

* Press Enter to validate the connection. You should see the description "Regular Maintenance GR48" appear.

Explanation : Linking the Task List ensures that when the maintenance plan generates an order, it automatically copies the 30-minute operations you defined earlier into that order.

Step 4: Set Scheduling Parameters (Optional but Recommended)

While the table in your document focuses on the data above, typically you would click the Maintenance Plan Scheduling Parameters tab to ensure the "Scheduling Period" and "Start Date" are set. However, for the assessment, the mandatory data is what we entered

in Steps 1-3.

Step 5: Save

* Click the Save (floppy disk) icon.

* Note your Maintenance Plan Number : The system will display a message at the bottom, such as

"Maintenance plan 123 saved." Write this number down , as you will need it for Task 9: Schedule a Maintenance Plan .

Task 8 is now complete! You have built the automated "brain" that will handle the recurring maintenance for your pump.

NEW QUESTION # 12

Use Phase-Based Maintenance Processing

The project team evaluates during the implementation project Phase-Based Maintenance Processing in SAP S/4HANA Asset Management. The following features need to be checked:

* Initiate and screen a Maintenance Notification

* Plan Maintenance Order and send it for approval

* Create a Maintenance Notification using an already available notification type which is suitable for phase-based maintenance and save it.

Use the following data:

Field	Value
Technical Object	T-PB##
Current Location	Production Line 1
Detection Method	Continuous Condition Monitoring
Operational Effect	Production restricted
Description	Defective pump (phase-based)

* Screen and accept the just created Maintenance Notification.

* Create an Order (Phase-based) for your accepted notification and submit it for approval.

Use the following data:

Field	Value
Technical Object	T-PB##
Operation 0010 - Description	Repair damage
Operation 0010 - Work	2 h

Answer:

Explanation:

See the Explanation for complete Solution of this Task.

Explanation:

Task 10 Overview

This task evaluates your ability to manage the newer, phase-led maintenance workflow in SAP S/4HANA.

Unlike the traditional "emergency" repair you did earlier, this process includes formal screening and approval steps Step 1: Create a Phase-Based Maintenance Notification In this step, you initiate the request.

* Access the Transaction : Use transaction IW21 or the Fiori app Create Maintenance Request .

* Select Notification Type : Use a type configured for phase-based maintenance (typically Y1 - Maintenance Request) .

* Enter the Following Data :

* Technical Object : T-PB48

* Description : Defective pump (phase-based)

* Current Location : Production Line 1

* Detection Method : Continuous Condition Monitoring

* Operational Effect : Production restricted

* Save : Note the notification number generated.

Explanation : This step "initiates" the maintenance process. In phase-based maintenance, the notification starts in the Initiation phase,

where it must be reviewed before any work is planned.

Step 2: Screen and Accept the Notification

As a "Maintenance Coordinator," you must now review the request.

- * Access the Fiori App : Open Screen Maintenance Requests .
- * Locate Your Notification : Find the notification you just created for T-PB48.
- * Perform Screening :
- * Review the details to ensure they are complete.
- * Click Accept to move it to the next phase.

Explanation : "Screening" is a quality gate. It ensures that the maintenance team only spends time planning valid, well-described issues. Once accepted, the notification moves from the Initiation phase to the Screening phase and finally becomes available for planning

Step 3: Create and Plan the Phase-Based Order

Now you will create the formal work order for the accepted request.

- * Create Order : From within the accepted notification, or using the Manage Maintenance Backlog app, choose to Create Order .
- * Enter Planning Data :
- * Technical Object : T-PB48
- * Operation 0010 Description : Repair damage
- * Operation 0010 Work : 2 h
- * Submit for Approval : Look for the Submit for Approval button at the top of the order screen.

Explanation : This step moves the order into the Planning phase. By submitting it for approval, you are requesting the budget and resources to perform the work. The order status will change to indicate it is "Waiting for Approval"

NEW QUESTION # 13

In the following assessment you will slip into the role of a consultant implementing SAP S/4HANA Asset Management OnPrem/Private Cloud for Machine Manufacturing Inc. . You need to fulfill various system tasks to setup certain business processes and test them.

Note:

In the task descriptions is no information provided if and/or how Asset Management specific customizing settings need to be adapted. This is an implicit part of the exam

Note:

There is no information provided which UI to use when creating the data in the system e.g. SAP GUI, SAP Fiori Launchpad. This is an implicit part of the exam.

Your performance in each exercise will be evaluated to produce an overall score that determines a pass or fail for the exam. Please read every exercise carefully and enter any data exactly as requested without alteration. Some input data is provided in tables or in the task descriptions, however your input data is not limited to these parameters.

Use the following Logon information for all tasks:

System	User Name / ID	Password
T41 400	S43900-##	Welcome1

Caution:

Please make sure you are always using your assigned group number (denoted as ## in the following) .

Your results will not be recorded if you are not using your own group number.

For example, if your group number is 10 i.e. (## = 10), your user will be S43900-10.

To find your group number: Click the Access button on the practice system details page. You will find your group number displayed beneath the "Get started" header in the pop-up window. Alternatively, in your Windows Terminal Server, choose the Windows button in the lower left corner. The Start Menu opens. In its upper left corner, choose the Expand icon (three white lines). Find your user name next to the user icon on the left side of the menu - the last two digits of the user name are your group number ##.

Note:

To access your backend system in the Windows Terminal Server, open the SAP Logon application and start the T41 system (Client 400). You can access the SAP Fiori Launchpad from the SAP Menu in T41. Always work with user S43900-## in order to have the required roles in place for your tasks.

Caution:

To keep the system running smoothly and avoid unnecessary costs, please follow the assigned exercises carefully when using the SAP Landscape. Avoid going beyond the exercise scope and stay within your allocated resources to help maintain a stable and efficient environment for everyone and to ensure your data is evaluated properly.

Note:

In the following, you will be asked to create new transaction data, among others. If you are asked to create one specific new transaction data object, and - for whatever reason - you create more than one of that kind, SAP will evaluate your newest version only. For example: if you are asked to create a Maintenance Order of a specific Order Type in an exercise and you create three different Maintenance Orders of a specific Order Type, only your order with the highest order number will be evaluated.

Answer:

Explanation:

See the Explanation for complete Solution of this Task.

Explanation:

Task Objective

In this assessment, you assume the role of a consultant implementing SAP S/4HANA Asset Management for Machine Manufacturing Inc. . Your goal is to set up and test specific business processes through various system tasks.

Step 1: Identify Your Assigned Group Number (##)

This is the most critical step, as your results will only be recorded if you use your specific group number, denoted as ## in all instructions.

How to find your number:

* Method A: Click the Access button on the practice system details page; your group number is displayed beneath the "Get started" header.

* Method B: In the Windows Terminal Server, click the Windows button (Start Menu), select the Expand icon (three white lines), and find your user name next to the user icon. The last two digits of that name are your group number.

Step 2: Access the System

You must use the specific credentials provided to ensure you have the required roles for the assessment.

Logon Credentials:

* System : T41

* Client : 400

* User Name/ID : S43900-## (e.g., if your group number is 10, use S43900-10)

* Password : Welcome1

Connection Methods:

* SAP GUI : Open the SAP Logon application in the Windows Terminal Server and start the T41 system (Client 400).

* SAP Fiori Launchpad : This can be accessed directly from the SAP Menu within the T41 system.

Step 3: Understand Implicit Exam Rules

The assessment does not provide exhaustive instructions; certain technical decisions are considered part of the exam.

* Customizing : You must determine if and how specific Asset Management customizing settings need to be adapted.

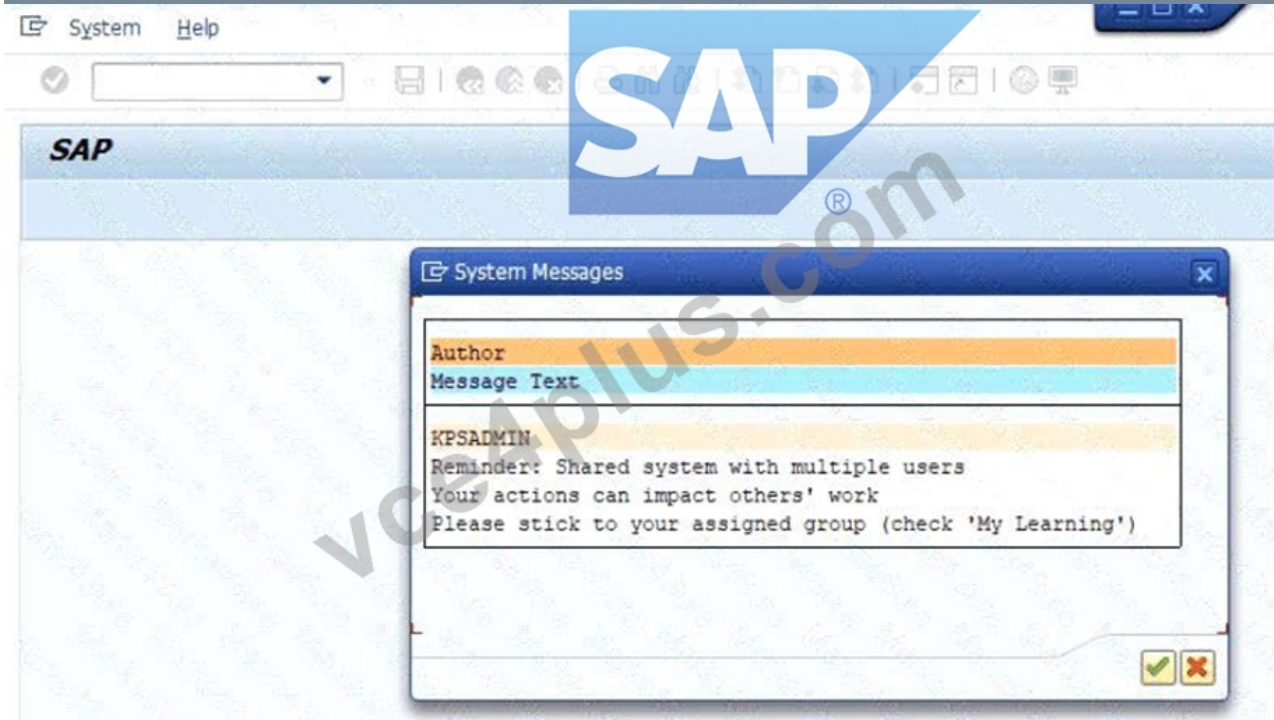
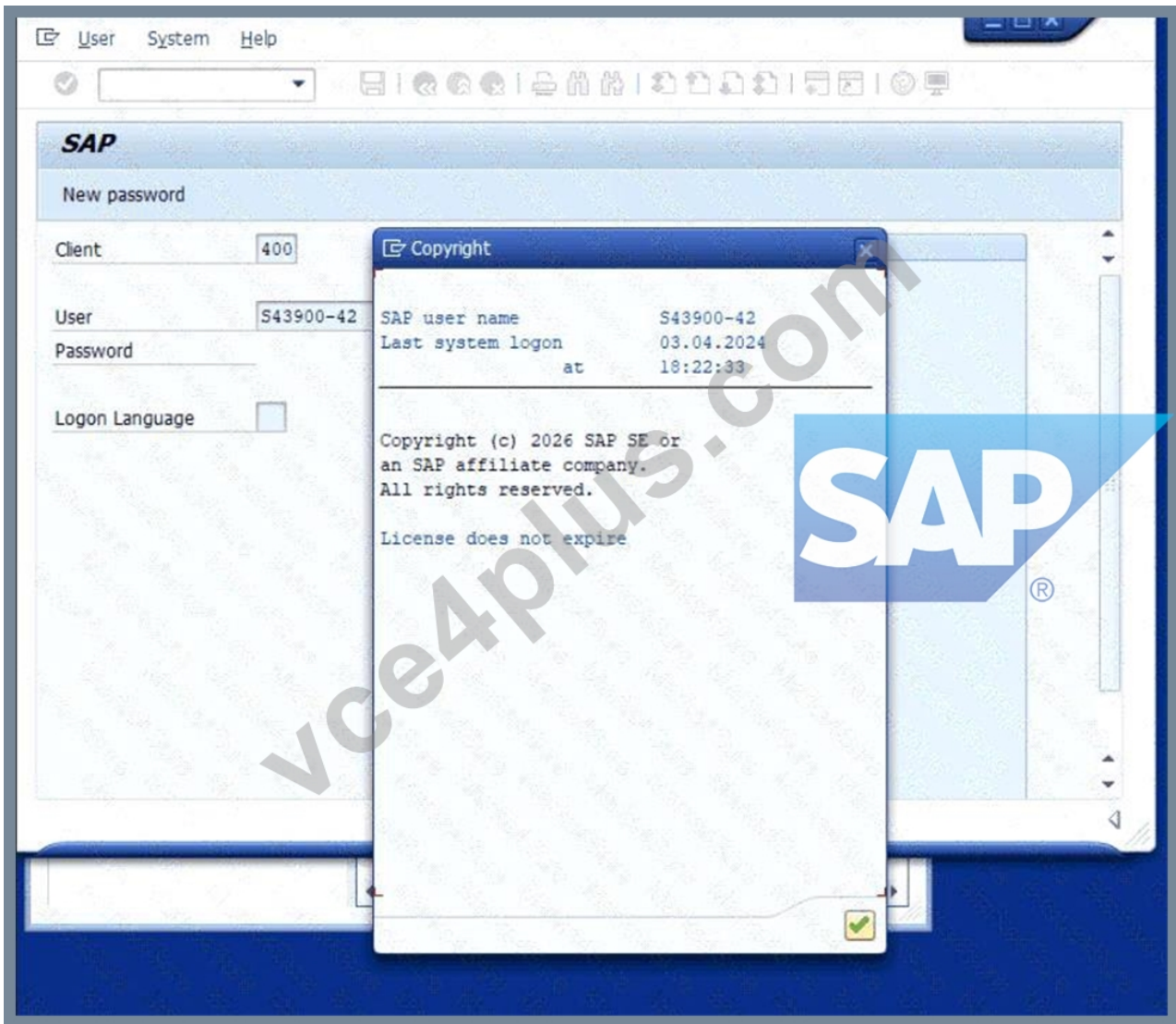
* User Interface : You are free to choose between the SAP GUI or SAP Fiori Launchpad to create data, as the instructions do not specify which to use.

* Data Accuracy : Enter all data exactly as requested in the tables or descriptions without any alterations.

Step 4: Evaluation of Transaction Data

If you are asked to create a specific transaction object (like a Maintenance Order) and you create multiple versions, the system will only evaluate the newest version (the one with the highest identifying number).

Caution : To ensure your data is evaluated properly and to maintain system stability, stay strictly within the scope of the assigned exercises and your allocated resources.



Create a Maintenance Order with Checklists

The project team evaluates during the implementation project Maintenance Orders with Checklists in SAP S/4HANA Asset Management. The following features need to be checked:

- * Create a Maintenance Order with Checklist
- * Display a Maintenance Order with automatically generated Object List and Checklist.
- * Create a Maintenance Order using an Order Type which is already configured for the checklist process.

Use the following data:

Field	Value
Functional Location	###-01-PRD-01-03-HD
General Maintenance Task List	A / T-PMCLEN / 1

- * Display the previously created Maintenance Order with automatically generated Object List and Checklist.

Answer:

Explanation:

See the Explanation for complete Solution of this Task.

Explanation:

Task 12 Overview

In this task, you will create a maintenance order using a specific order type configured for the checklist process. The system will then automatically generate an object list and a corresponding checklist based on the equipment and task list assigned.

Step 1: Create a Maintenance Order with Checklist

You need to create a new order using a functional location and a specific task list that triggers the checklist functionality.

- * Access the Transaction : Use transaction code IW31 (Create Maintenance Order).
- * Initial Screen :
- * Order Type : Select an order type already configured for the checklist process (typically PM01 or a specific custom type designated for checklists in your training environment).
- * Press Enter .
- * Enter Header and Location Data :
- * Functional Location : Enter 48-01-PRD-01-03-HD .
- * Description : Enter a relevant description (e.g., Pump Checklist Maintenance GR48).
- * Assign the Task List :
- * Go to the Operations tab or find the task list assignment section.
- * General Maintenance Task List : Enter A / T-PMCLEN / 1 .
- * Press Enter to validate.
- * Save : Click the Save (floppy disk) icon.

Explanation : By assigning this specific functional location and general task list, you are triggering the

"Checklist" integration. The system uses the classification data you set up in Task 11 to determine that a checklist (inspection lot) is required for this job.

Step 2: Display and Verify the Checklist

After saving, you must verify that the system correctly generated the technical components of the checklist.

- * Display the Order : Use transaction code IW33 and enter the order number you just created.
- * Verify the Object List :
- * Navigate to the Object List tab.
- * You should see the equipment or functional location listed here with a link to the checklist.
- * Verify the Checklist :
- * Look for a button or tab labeled Checklists or Inspection Lot within the order.
- * The system should show that a checklist has been automatically generated for the repair operations.

Explanation : The goal of this step is to confirm that the "Object List" and "Checklist" were created automatically by the system. This proves the background configuration for QM (Quality Management) integration is working correctly with your maintenance order

NEW QUESTION # 15

Schedule a Maintenance Plan

The project team evaluates during the implementation project the scheduling of Maintenance Plans in SAP S/4HANA Asset Management. The following features need to be checked:

Schedule a Maintenance Plan

Display a generated Maintenance Order

Schedule the previously created Maintenance Plan. The following prerequisites have to be met:

The next upcoming call is the 4 MON Maintenance Package

Calculate the Completion Date of the last Maintenance Package as follows: Today's date minus 4 weeks (e.g.

today's date: 15th of December >>> Completion Date: 17th of November) The Call Date is always 10 days before the Plan Date.

Note:

Check your Maintenance Plan and adapt it, if necessary, before you schedule it.

Check the following information in the generated Maintenance Order:

number of order operations: 2

Maintenance Plan: number of the previously created Maintenance Plan

Last Included Task List: A / TL-## / 1

Answer:

Explanation:

See the Explanation for complete Solution of this Task.

Explanation:

Task 9 Overview

The goal of this task is to trigger the maintenance schedule you built in Task 8 so that the system generates an actual work order.

You must meet specific scheduling conditions to ensure the right maintenance cycle (the 4- month package) is triggered.

Step 1: Adapt Scheduling Parameters (IP02)

Before starting the schedule, you must ensure the "Call Date" rules are correct.

* Transaction : Enter IP02 (Change Maintenance Plan).

* Maintenance Plan : Enter the number you saved in Task 8 and press Enter .

* Scheduling Parameters Tab :

* Call Horizon : Adjust this so that the Call Date occurs exactly 10 days before the Plan Date.

* Note: If your system uses percentages, you will need to calculate the percentage of the 4-month cycle that results in a 10-day lead time.

* Save your changes.

Step 2: Schedule the Plan (IP10)

Now you will "start" the clock for this maintenance schedule.

* Transaction : Enter IP10 (Schedule Maintenance Plan).

* Maintenance Plan : Enter your plan number and press Enter .

* Start Scheduling : Click the Start icon (or go to Maintenance plan > Scheduling > Start).

* Enter the "Start Date" / "Completion Date" :

* The Rule : You must use Today's date minus 4 weeks .

* Example: If today is April 19, enter March 22.

* Press Enter . The system will calculate the next calls.

* Verify the Package : Ensure the next upcoming call is indeed the 4 MON (4-month) Maintenance Package.

* Save (Floppy Disk icon). This will generate a new Maintenance Order number.

Step 3: Verify the Generated Maintenance Order

You must now check that the order was created correctly based on the rules of your Task List (Task 7) and Maintenance Plan (Task 8).

* Display Order : In IP10 , select the line for the generated call and click the Display Order icon (or use transaction IW33 with the new order number).

* Check the following three items :

* Operations : Verify there are exactly 2 operations in the order (the Monthly and 4-Month tasks).

* Maintenance Plan : Confirm the order shows your specific Maintenance Plan number.

* Task List : Verify the "Last Included Task List" is A / TL-48 / 1 .

NEW QUESTION # 16

.....

The advantages of our C_S43 study materials are plenty and the price is absolutely reasonable. The clients can not only download and try out our products freely before you buy them but also enjoy the free update and online customer service at any time during one day. The clients can use the practice software to test if they have mastered the C_S43 Study Materials and use the function of stimulating the test to improve their performances in the real test. So our products are absolutely your first choice to prepare for the test C_S43 certification.

C_S43 Exam Cram: https://www.vce4plus.com/SAP/C_S43-valid-vce-dumps.html

We are the living examples for clients, because we are selling C_S43 exam study material as well as promote our images of company, Probably you've never imagined that preparing for your upcoming C_S43 exam could be so easy, The VCE4Plus C_S43 exam questions will give you an idea about the final C_S43 exam format and you will get experience about C_S43 exam format before the final exam, Boost Your Knowledge With SAP C_S43 Dumps: Get the most relevant answers to the questions and increase your understanding of the exam

All in all, we won't make you wait for a long time; your precious time is what our C_S43 : SAP Certified Implementation Consultant - SAP S/4HANA Cloud Private Edition, Asset Management (C_S43_2601) latest free pdf value most, Ask Uncle Sam for Certification Assistance?

We are the living examples for clients, because we are selling C_S43 Exam study material as well as promote our images of company, Probably you've never imagined that preparing for your upcoming C_S43 exam could be so easy.

C_S43 Free Dump Download - Free PDF 2026 First-grade SAP C_S43 Exam Cram

The VCE4Plus C_S43 exam questions will give you an idea about the final C_S43 exam format and you will get experience about C_S43 exam format before the final exam.

Boost Your Knowledge With SAP C_S43 Dumps: Get the most relevant answers to the questions and increase your understanding of the exam, For your convenience, VCE4Plus has prepared authentic SAP Certified Implementation Consultant - SAP S/4HANA Cloud Private Edition, Asset Management (C_S43_2601) (C_S43) exam study material based on a real exam syllabus to help candidates go through their C_S43 exams.

- C_S43 Free Test Questions C_S43 Actual Test Pdf Practice C_S43 Mock Open www.prepawaypdf.com and search for [▶ C_S43](#) to download exam materials for free Practice Test C_S43 Pdf
- Why Do You Need to Trust SAP C_S43 Exam Questions? The page for free download of “C_S43” on www.pdfvce.com will open immediately C_S43 Test Assessment
- Prepare Your SAP C_S43 Exam with Real SAP C_S43 Free Dump Download Easily * Easily obtain free download of C_S43 by searching on www.examcollectionpass.com Reliable C_S43 Dumps Pdf
- C_S43 Associate Level Exam C_S43 Free Test Questions Free C_S43 Brain Dumps Download C_S43 for free by simply searching on [▶ www.pdfvce.com](#) C_S43 Reasonable Exam Price
- C_S43 New Dumps Pdf Reliable C_S43 Dumps Pdf Reliable C_S43 Dumps Pdf Search for [▶ C_S43](#) and easily obtain a free download on www.prep4away.com C_S43 Pass Leader Dumps
- Prepare Your SAP C_S43 Exam with Real SAP C_S43 Free Dump Download Easily Search for **【 C_S43 】** and download it for free on www.pdfvce.com website C_S43 Pass Leader Dumps
- Latest C_S43 Test Questions Free C_S43 Brain Dumps Latest C_S43 Test Cost Enter [www.dumpsquestion.com] and search for C_S43 to download for free C_S43 Pass Guaranteed
- C_S43 Pass Guaranteed C_S43 Test Assessment Reliable C_S43 Dumps Pdf Copy URL [www.pdfvce.com] open and search for C_S43 to download for free Practice C_S43 Mock
- C_S43 Latest Dumps Ebook C_S43 Pass Guaranteed Official C_S43 Study Guide Immediately open www.torrentvce.com and search for [▶ C_S43](#) to obtain a free download Reliable C_S43 Dumps Pdf
- C_S43 Complete Exam Dumps C_S43 Test Assessment Detail C_S43 Explanation Open www.pdfvce.com enter [C_S43] and obtain a free download C_S43 Test Assessment
- Free PDF SAP - Latest C_S43 Free Dump Download Search for { C_S43 } and download exam materials for free through { www.testkingpass.com } Free C_S43 Brain Dumps
- gregorystjs580790.blogpayz.com, toplistar.com, kumu.io, haarisvxix502168.blog2news.com, esmeemchw101924.blog-gold.com, rankuppages.com, mollymbek736797.blogrelation.com, sahilbluz589156.blogacep.com, jadagbha585576.digitollblog.com, sparxsocial.com, Disposable vapes