

2026 Authoritative HPE6-A78–100% Free Trustworthy Practice | Valid Aruba Certified Network Security Associate Exam Test Camp

 **TRUE GOOGLE AUTHORITY**

GET REAL WEBSITE OUTREACH LINKS FOR QUALITY RANKING

2026 EDITION

RELIABLE & RESULTS-DRIVEN

Since launching this thread in 2023, we've **stood strong through 2+ years of Google updates**. Thousands of users across all niches are already seeing results. This edition comes with **high stability, E-E-A-T & ranking improvements** for any niche



THE BOSS OF RANKING

NOW JUST \$26.9
(PREVIOUSLY \$30-\$35) **LIMITED OFFER ONLY**

IS YOUR WEBSITE SUFFERING FROM A TERRIBLE ILLNESS CALLED **"LACK OF BACKLINK DIVERSITY"**, IT'S TERMINAL FOR THE LESS FORTUNATES THAT DON'T TREAT IT IN TIME.



Link building is the cornerstone of modern SEO and we understand its importance. If your website or your clients' sites are stuck on Google's back pages, it's time for a change.

You'll have all the link juice power at your Finger tips

Access Real Backlinks through our Extensive Niche-Specific sites for Great Ranking Improvements.

These sites have consistently delivered exceptional results for our clients, all at a fraction of the cost of traditional guest posting or building private blog networks.

To succeed in SEO You need



on-page optimization 

Quality 



Quality content

Relevance and power.

The objective is not to 'MAKE YOUR LINKS APPEAR REAL': the objective is that your LINKS ARE REAL.

Rather than relying on a single exceptional link, you need multiple laser-targeted, aged, and unique links. We've spent years cultivating relationships to secure these high-quality links.

Think about it: Google recognizes the value of having numerous authoritative websites discuss your niche. These are commonly known as niche edits, and they've consistently proven to be a secure and rapid way to boost website rankings.

The value of these links are Boundless. While other sellers charge exorbitant prices, we're currently offering them at an Reasonable rate.

THE BOSS

DON'T MISS THIS OPPORTUNITY TO HARNESS THE POWER OF HUNDREDS OF LINKS FROM GENUINE WEBSITES AT A QUARTER OF THE USUAL PRICE. ACT QUICKLY. AS THIS OFFER WON'T LAST LONG!

Why do you need real authority links?

Google recognizes the importance of authoritative links to boost search engine rankings.

LINKS FROM REAL SITES WITH QUALITY TRAFFIC

and No History of expiring or redesigning hold genuine authority in Google's eyes.

With our links you can expect to see improvements in your search engine rankings in as little as 5-7 days,

"REAL LINKS PROVIDE FASTER RESULTS AND LASTING AUTHORITY."

REAL AUTHORITY ISN'T GIVEN; IT'S EARNED THROUGH CREDIBILITY AND QUALITY.



What are the metrics for the Sites?

 **DA & DR:** All the way to 60+
 **RD:** From 100 all the way to 2000+
(majestic fresh index)
 **TF :** From 5 all the way to 40+

Take this opportunity
to gain **REAL AUTHORITY** for your website!







THE BOSS

How does this work? What do you actually get?

- ✓ Powerful link within aged post/page from a real website.
- ✓ Not a homepage link, not PBNs.
- ✓ Provide anchor text and URL.
- ✓ Links placed contextually in a relevant article.
- ✓ After ordering, receive a report with links and re-index submission.
- ✓ Replacement or expired link replaced at no cost.
- ✓ Links placed in niche-relevant posts.
- ✓ Content created by actual editors/owners, not SEO-driven
- ✓ No article submissions allowed; content is natural.



Our Packages

 BASIC	 STANDARD	 PREMIUM
5 LINKS -Aged Guest Post from a niche specific -Real Link Placements on powerful websites -If you are interested give me your own words of 40 - 50 words 5 to 6 working days \$249 \$134	10 LINKS -Aged Guest Post from a niche specific -Real Link Placements on powerful websites -If you are interested give me your own words of 40 - 50 words 6 to 7 working days \$499 \$269	20 LINKS -Aged Guest Post from a niche specific -Real Link Placements on powerful websites -If you are interested give me your own words of 40 - 50 words 7 to 8 working days \$999 \$539
BUY NOW 	BUY NOW 	BUY NOW 

USE COUPON CODE



BOSS46

TO GET
DISCOUNTED PRICE



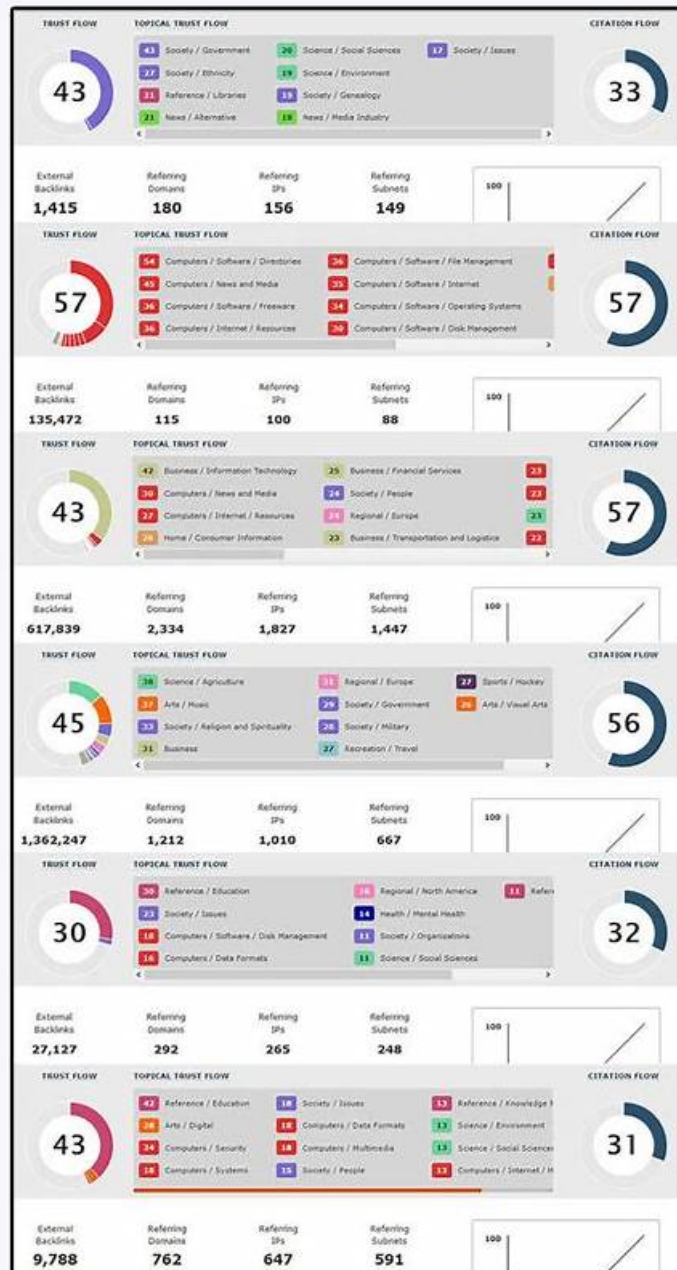
FAO



FAQ

- 1. DO YOU ACCEPT FOREIGN KEYWORDS AND WEBSITES?**
YES, WE ACCEPT FOREIGN KEYWORDS AND WEBSITES.
- 2. IS THERE A SAMPLE LIST AVAILABLE TO CHECK AVERAGE METRICS?**
YES, WE PROVIDE A SAMPLE LIST SO YOU CAN ASSESS THE AVERAGE METRICS.
- 3. WHAT IS THE TURNAROUND TIME (TAT) FOR THESE LINKS?**
THE TURNAROUND TIME IS 8 TO 10 DAYS.
- 4. WHAT IS THE REFUND POLICY IF A LINK IS REMOVED?**
WE OFFER A 100% REFUND IF THE PLACED LINK IS REMOVED OR REPLACEMENT WILL BE PROVIDED.
- 5. DO YOU ACCEPT PHARMA/GAMBLING/ADULT NICHES?**
YES, WE DO ACCEPT PHARMA, GAMBLING, ADULT, ETC. WE

Sample Sites



Disclaimer: The only metric we base this service in is Majestic Referring Domains from the Fresh Index, if you want any other metric then message us first, additional fees may apply.

"For the latest and best offerings, refer to the last page of the thread."

2026 Latest PracticeVCE HPE6-A78 PDF Dumps and HPE6-A78 Exam Engine Free Share: https://drive.google.com/open?id=1xuA2q4g3uxIG_YeC0UqtpjaJ9maSxWs0

Facts proved that if you do not have the certification, you will be washed out by the society. So it is very necessary for you to try your best to get the HPE6-A78 certification in a short time. If you are determined to get the certification, our HPE6-A78 question torrent is willing to give you a hand; because the study materials from our company will be the best study tool for you to get the certification. Now I am going to introduce our HPE6-A78 Exam Question to you in detail, please read our introduction carefully, we can make sure that you will benefit a lot from it. If you are interest in it, you can buy it right now.

HPE6-A78 exam consists of 60 multiple-choice questions that the candidate has to complete in 90 minutes. HPE6-A78 exam questions are designed to evaluate the candidate's knowledge of network security concepts, technologies, and best practices. HPE6-A78 Exam also includes simulation questions that assess the candidate's ability to configure and troubleshoot network security solutions using Aruba technologies.

>> **Trustworthy HPE6-A78 Practice** <<

100% Pass Quiz 2026 Latest HP Trustworthy HPE6-A78 Practice

Why we can produce the best HPE6-A78 exam prep and can get so much praise in the international market. On the one hand, the software version can simulate the real HPE6-A78 examination for you and you can download our study materials on more than one computer with the software version of our study materials. On the other hand, you can finish practicing all the contents in our HPE6-A78 practice materials within 20 to 30 hours. So what are you waiting for? Just rush to buy our HPE6-A78 exam questions!

HP Aruba Certified Network Security Associate Exam Sample Questions (Q108-Q113):

NEW QUESTION # 108

What is an example of phishing?

- A. An attacker lures clients to connect to a software-based AP that is using a legitimate SSID.
- **B. An attacker sends emails posing as a service team member to get users to disclose their passwords.**
- C. An attacker checks a user's password by using trying millions of potential passwords.
- D. An attacker sends TCP messages to many different ports to discover which ports are open.

Answer: B

Explanation:

Phishing is a type of social engineering attack where an attacker impersonates a trusted entity to deceive people into providing sensitive information, such as passwords or credit card numbers. An example of phishing is when an attacker sends emails posing as a service team member or a legitimate organization with the intention of getting users to disclose their passwords or other confidential information. These emails often contain links to fake websites that look remarkably similar to legitimate ones, tricking users into entering their details.

:

Cybersecurity guidelines on identifying and preventing phishing attacks.

NEW QUESTION # 109

What is one way a nonepot can be used to launch a man-in-the-middle (MITM) attack to wireless clients?

- A. it uses ARP poisoning to disconnect wireless clients from the legitimate wireless network and force clients to connect to the hacker's wireless network instead.
- B. it runs an NMap scan on the wireless client to And the clients MAC and IP address. The hacker then connects to another network and spoofs those addresses.
- C. it uses a combination of software and hardware to jam the RF band and prevent the client from connecting to any wireless

networks

- D. it examines wireless clients' probes and broadcasts the SSIDs in the probes, so that wireless clients will connect to it automatically.

Answer: D

Explanation:

A honeypot can be used to launch a Man-in-the-Middle (MITM) attack on wireless clients by examining wireless clients' probe requests and then broadcasting the SSIDs in those probes. Clients with those SSIDs in their preferred network list may then automatically connect to the honeypot, believing it to be a legitimate network. Once the client is connected to the attacker's honeypot, the attacker can intercept, monitor, or manipulate the client's traffic, effectively executing a MITM attack.

NEW QUESTION # 110

How does the ArubaOS firewall determine which rules to apply to a specific client's traffic?

- A. The firewall applies the rules in policies associated with the client's wlan
- B. The firewall applies every rule that includes the client's IP address as the source or destination.
- C. The firewall applies the rules in policies associated with the client's user role.
- D. The firewall applies every rule that includes the client's IP address as the source.

Answer: C

Explanation:

The ArubaOS firewall determines which rules to apply to a specific client's traffic based on the rules in policies associated with the client's user role. User roles are a fundamental part of ArubaOS and the firewall policies they encompass. These roles contain policies that dictate permissions and restrictions for network traffic. When a client authenticates, it is assigned a role, and the firewall enforces the rules defined within that role for the client's traffic.

:

ArubaOS firewall and user role configuration guides that explain the role-based access control and firewall policy enforcement. Industry best practices for network access control that advocate for role-based enforcement mechanisms.

NEW QUESTION # 111

You have deployed a new Aruba Mobility Controller (MC) and campus APs (CAPs). One of the WLANs enforces 802.1X authentication to Aruba ClearPass Policy Manager (CPPM). When you test connecting the client to the WLAN, the test fails. You check Aruba ClearPass Access Tracker and cannot find a record of the authentication attempt. You ping from the MC to CPPM, and the ping is successful.

What is a good next step for troubleshooting?

- A. Check connectivity between CPPM and a backend directory server
- B. Reset the user credentials
- C. Check CPPM Event viewer.
- D. Renew CPPM's RADIUS/EAP certificate

Answer: C

Explanation:

When dealing with a failed 802.1X authentication attempt to a WLAN enforced by Aruba ClearPass Policy Manager (CPPM) where no record of the attempt is seen in ClearPass Access Tracker, a good next troubleshooting step is to check the CPPM Event Viewer. Since you are able to successfully ping from the Mobility Controller to CPPM, this indicates that there is network connectivity between these two devices. The lack of a record in Access Tracker suggests that the issue may not be with the RADIUS/EAP certificate or user credentials, but possibly with the ClearPass service itself or its reception of authentication requests. The Event Viewer can provide detailed logs that might reveal internal errors or misconfigurations within CPPM that could prevent it from processing authentication attempts properly.

NEW QUESTION # 112

What is a consideration for implementing wireless containment in response to unauthorized devices discovered by ArubaOS Wireless Intrusion Detection (WIP)?

- A. Because wireless containment has a lower risk of targeting legitimate neighbors than wired containment, it is recommended in most use cases.
- B. Wireless containment only works against unauthorized wireless devices that connect to your corporate LAN, so it does not offer protection against Interfering APs.
- C. It is best practice to implement automatic containment of unauthorized devices to eliminate the need to locate and remove them.
- D. Your company should consider legal implications before you enable automatic containment or implement manual containment.

Answer: D

Explanation:

When implementing wireless containment as a response to unauthorized devices, a company should consider the legal implications. Wireless containment might affect devices that are not part of the company's network and could be considered as a form of interference. This could have legal consequences, and therefore, such actions should be carefully reviewed and ideally should be performed in a targeted and controlled manner, reducing the risk of legal issues.

NEW QUESTION # 113

• • • • •

PracticeVCE customizable practice exams (desktop and web-based) help students know and overcome their mistakes. The customizable HP HPE6-A78 practice test means that the users can set the Questions and time according to their needs so that they can feel the real-based exam scenario and learn to handle the pressure. The updated pattern of HP HPE6-A78 Practice Test ensures that customers don't face any real issues while preparing for the test.

Valid HPE6-A78 Test Camp: <https://www.practicevce.com/HP/HPE6-A78-practice-exam-dumps.html>

- [illegible]

myportal.utt.edu.tt, myportal.utt.edu.tt, myportal.utt.edu.tt, myportal.utt.edu.tt, myportal.utt.edu.tt, myportal.utt.edu.tt,
myportal.utt.edu.tt, www.stes.tyc.edu.tw, www.stes.tyc.edu.tw, www.stes.tyc.edu.tw, Disposable vapes

BTW, DOWNLOAD part of PracticeVCE HPE6-A78 dumps from Cloud Storage: https://drive.google.com/open?id=1xuA2q4g3uxIG_YeC0UqtpjaJ9mSxWs0