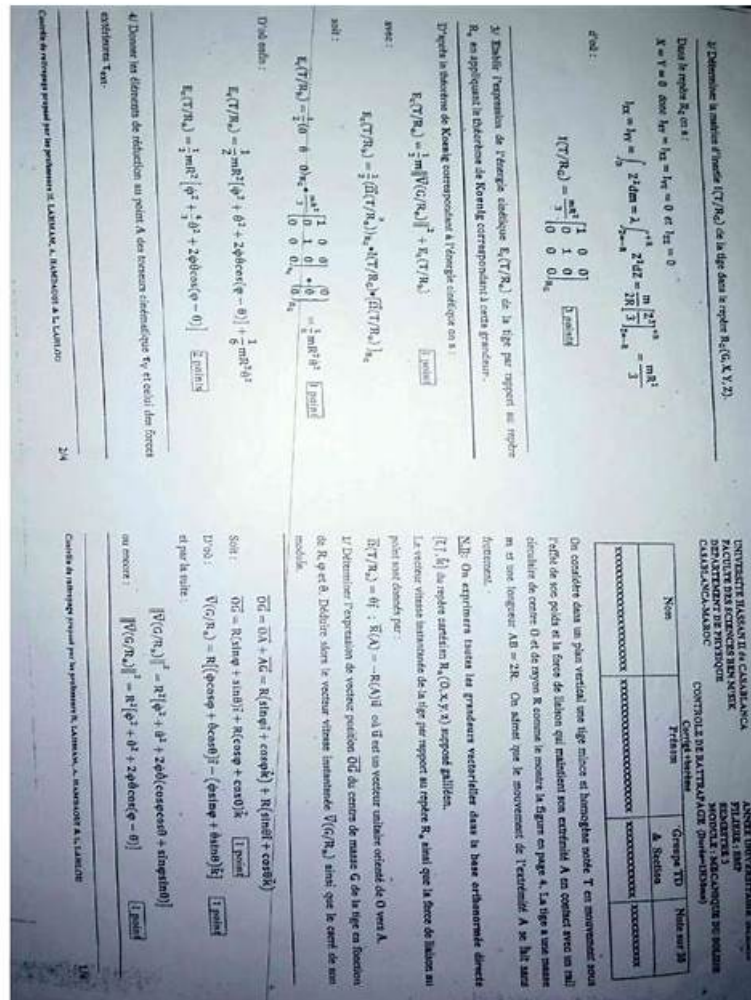


# Valid NetSec-Pro Exam Papers | NetSec-Pro Exams Torrent



DOWNLOAD the newest ActualVCE NetSec-Pro PDF dumps from Cloud Storage for free: <https://drive.google.com/open?id=1H3oG862F8O6CGbF8PCU0tsmgW9bDMqse>

We promise to provide a high-quality simulation system with advanced NetSec-Pro study materials. With the simulation function, our NetSec-Pro training guide is easier to understand and have more vivid explanations to help you learn more knowledge. You can set time to test your study efficiency, so that you can accomplish your test within the given time when you are in the Real NetSec-Pro Exam. You will be confident if you have more experience on the NetSec-Pro exam questions!

## Palo Alto Networks NetSec-Pro Exam Syllabus Topics:

Topic	Details
Topic 1	<ul style="list-style-type: none"> <li><b>Network Security Fundamentals:</b> This section of the exam measures skills of network security engineers and covers key concepts such as application layer inspection for Strata and SASE products, differentiating between slow and fast path packet inspection, and the use of decryption methods including SSL Forward Proxy, SSL Inbound Inspection, SSH Proxy, and scenarios where no decryption is applied. It also includes applying network hardening techniques like Content-ID, Zero Trust principles, User-ID (including Cloud Identity Engine), Device-ID, and network zoning to enhance security on Strata and SASE platforms.</li> </ul>

Topic 2	<ul style="list-style-type: none"> <li>• Infrastructure Management and CDSS: This section tests the abilities of security operations specialists and infrastructure managers in maintaining and configuring Cloud-Delivered Security Services (CDSS) including security policies, profiles, and updates. It includes managing IoT security with device IDs and monitoring, as well as Enterprise Data Loss Prevention and SaaS Security focusing on data encryption, access control, and logging. It also covers maintenance and configuration of Strata Cloud Manager and Panorama for network security environments including supported products, device addition, reporting, and configuration management.</li> </ul>
Topic 3	<ul style="list-style-type: none"> <li>• Platform Solutions, Services, and Tools: This section measures the expertise of security engineers and platform administrators in Palo Alto Networks NGFW and Prisma SASE products. It involves creating security and NAT policies, configuring Cloud-Delivered Security Services (CDSS) such as security profiles, User-ID and App-ID, decryption, and monitoring. It also covers the application of CDSS for IoT security, Enterprise Data Loss Prevention, SaaS Security, SD-WAN, GlobalProtect, Advanced WildFire, Threat Prevention, URL Filtering, and DNS security. Furthermore, it includes aligning AIOps with best practices through administration, dashboards, and Best Practice Assessments.</li> </ul>

>> Valid NetSec-Pro Exam Papers <<

## Valid NetSec-Pro Exam Papers Exam Pass Once Try | Palo Alto Networks NetSec-Pro: Palo Alto Networks Network Security Professional

The passing rate of our study material is very high, and it is about 99%. We provide free download and tryout of the NetSec-Pro question torrent, and we will update the NetSec-Pro exam torrent frequently to guarantee that you can get enough test bank and follow the trend in the theory and the practice. We provide 3 versions for you to choose thus you can choose the most convenient method to learn. Our NetSec-Pro Latest Questions are compiled by the experienced professionals elaborately. So it will be very convenient for you to buy our product and it will do a lot of good to you.

### Palo Alto Networks Network Security Professional Sample Questions (Q23-Q28):

#### NEW QUESTION # 23

Which two features can a network administrator use to troubleshoot the issue of a Prisma Access mobile user who is unable to access SaaS applications? (Choose two.)

- A. Capacity Analyzer
- B. GlobalProtect logs
- C. SaaS Application Risk Portal
- D. Autonomous Digital Experience Manager (ADEM) console

**Answer: B,D**

Explanation:

GlobalProtect logs

These logs provide detailed insights into the user's connectivity, tunnel status, and authentication events.

"GlobalProtect logs include detailed information about connection establishment, tunnel negotiation, and any errors that can prevent mobile users from accessing applications." (Source: GlobalProtect Troubleshooting) Autonomous Digital Experience Management (ADEM) ADEM helps visualize end-to-end performance and identifies network issues affecting SaaS app access for mobile users.

"ADEM provides real-time and historical visibility into user experience, enabling quick identification and resolution of connectivity or performance issues for SaaS applications." (Source: ADEM for Prisma Access)

#### NEW QUESTION # 24

Which action is only taken during slow path in the NGFW policy?

- A. Session lookup
- B. SSL/TLS decryption
- C. Layer 2-Layer 4 firewall processing

- D. Security policy lookup

**Answer: B**

Explanation:

In Palo Alto Networks' Single-Pass Parallel Processing (SP3) architecture, SSL/TLS decryption occurs only during the slow path when the firewall first encounters a new session.

"SSL/TLS decryption, which requires CPU-intensive cryptographic operations, is performed during the slow path when establishing new sessions. Once decrypted, traffic is processed in the fast path for subsequent packets." (Source: Packet Flow and SP3 Architecture) After the initial decryption in the slow path, decrypted traffic is handled by fast path for efficiency.

#### NEW QUESTION # 25

Which action allows an engineer to collectively update VM-Series firewalls with Strata Cloud Manager (SCM)?

- A. Creating a device grouping rule
- B. Setting a target OS version
- C. Scheduling software update
- D. Creating an update grouping rule

**Answer: A**

Explanation:

Device grouping rules in SCM allow administrators to organize firewalls into logical groups and collectively manage updates or configuration pushes across those groups.

"SCM allows you to create device group rules, enabling streamlined management and collective updates of multiple NGFW instances." (Source: SCM Device Grouping) This approach ensures consistency in software versions and configuration baselines across large deployments.

#### NEW QUESTION # 26

What must be configured to successfully onboard a Prisma Access remote network using Strata Cloud Manager (SCM)?

- A. IPsec termination node
- B. GlobalProtect agent
- C. Cloud Identity Engine
- D. Autonomous Digital Experience Manager (ADEM)

**Answer: A**

Explanation:

To connect a remote network to Prisma Access via Strata Cloud Manager (SCM), the remote network requires an IPsec termination node. This acts as the VPN endpoint, ensuring secure connectivity between branch locations and Prisma Access.

"To onboard a remote network, configure the IPsec termination node on the customer's premises. This VPN endpoint establishes the secure tunnel to Prisma Access for traffic backhauling." (Source: Onboard Remote Networks) Key takeaway:

The IPsec termination node is fundamental for secure, encrypted connectivity.

#### NEW QUESTION # 27

Which GlobalProtect configuration is recommended for granular security enforcement of remote user device posture?

- A. Configuring a rule that blocks the ability of users to disable GlobalProtect while accessing internal applications
- B. Implementing multi-factor authentication (MFA) for all users attempting to access internal applications
- C. Configuring host information profile (HIP) checks for all mobile users
- D. Applying log at session end to all GlobalProtect Security policies

**Answer: C**

Explanation:

Host Information Profile (HIP) checks are used in GlobalProtect to collect and evaluate endpoint posture (OS, patch level, AV status) to enforce granular security policies for remote users.

"The HIP feature collects information about the host and can be used in security policies to enforce posture-based access control. This ensures only compliant endpoints can access sensitive resources." (Source: GlobalProtect HIP Checks) This enables fine-grained, context-aware access decisions beyond user identity alone.

• • • • •

- [illegible]