

Pass Guaranteed 2026 Fortinet Marvelous Certificate NSE5_FSW_AD-7.6 Exam



BTW, DOWNLOAD part of PassSureExam NSE5_FSW_AD-7.6 dumps from Cloud Storage: https://drive.google.com/open?id=1Hi4zW_b_67MUxCnNTuOmpJ7QHJ0fadqU

With high pass rate of 99% to 100% of our NSE5_FSW_AD-7.6 training guide, obviously such positive pass rate will establish your confidence as well as strengthen your will to pass your exam. No other vendors can challenge our data in this market. At the same time, by studying with our NSE5_FSW_AD-7.6 practice materials, you avoid wasting your precious time on randomly looking for the key point information, and being upset about the accuracy when you compare with the information with the exam content. Our NSE5_FSW_AD-7.6 Training Materials provide a smooth road for you to success.

It is a common sense that in terms of a kind of Fortinet NSE 5 - FortiSwitch 7.6 Administrator test torrent, the pass rate would be the best advertisement, since only the pass rate can be the most powerful evidence to show whether the NSE5_FSW_AD-7.6 guide torrent is effective and useful or not. We are so proud to tell you that according to the statistics from the feedback of all of our customers, the pass rate among our customers who prepared for the exam under the guidance of our Fortinet NSE 5 - FortiSwitch 7.6 Administrator test torrent has reached as high as 98% to 100%, which definitely marks the highest pass rate in the field. Therefore, the NSE5_FSW_AD-7.6 Guide Torrent compiled by our company is definitely will be the most sensible choice for you.

>> Certificate NSE5_FSW_AD-7.6 Exam <<

Features of Fortinet NSE5_FSW_AD-7.6 Desktop and Web-based Practice Exams

Candidates who don't find actual NSE5_FSW_AD-7.6 Questions remain unsuccessful in the Fortinet NSE 5 - FortiSwitch 7.6 Administrator (NSE5_FSW_AD-7.6) test and lose their resources. That's why PassSureExam is offering real Fortinet NSE5_FSW_AD-7.6 Questions that are real and can save you from wasting time and money. Hundreds of applicants have studied successfully from our NSE5_FSW_AD-7.6 latest questions in one go.

Fortinet NSE5_FSW_AD-7.6 Exam Syllabus Topics:

Topic	Details
Topic 1	<ul style="list-style-type: none"> Layer 2 control and security: This section focuses on Layer 2 security features such as port security, filtering, antispoofing, ACLs, security profiles, and VLAN security mechanisms to protect switched networks.
Topic 2	<ul style="list-style-type: none"> Deployment and management: This domain includes provisioning and deploying FortiSwitch in supported topologies, including multi-tenancy environments. It emphasizes proper setup, scalability, and centralized management.
Topic 3	<ul style="list-style-type: none"> FortiSwitch concepts: This domain covers core FortiSwitch features including VLAN configuration, QoS, LLDP-MED, stacking, switching and routing, STP for loop prevention, and port and transceiver configuration. It focuses on essential switching operations and network integration.
Topic 4	<ul style="list-style-type: none"> Monitoring and troubleshooting: This domain covers packet capture methods, FortiLink troubleshooting, and diagnostic tools used to monitor traffic and resolve network issues.

Fortinet NSE 5 - FortiSwitch 7.6 Administrator Sample Questions (Q97-Q102):

NEW QUESTION # 97

Refer to the exhibit.

```

Debug output
Debug output

# diagnose switch-controller switch-info dhcp-snooping database
S224EPTF18001427
Vdom: root
S224EPTF18001427:
snoop-enabled-vlans           : 10
verifysrcmac-enabled-vlans   :
option82-enabled-vlans       : 10
option82-trust-enabled-intfs  :
trusted ports                 : port2  FlInK1 MLAG0
untrusted ports               : port1 port3 port4 port5 port6 port7 port8 port9
port10 port11
                             port12 port13 port14 port15 port16 port17 port18
port19 port20 port21
                             port22 port25 port26 port27 port28
Max Client Database Entries   : 2000
  Client Database             : 1
  Client6 Database            : 0
Max Server Database Entries   : 256
  Server Database             : 1
  Server6 Database            : 0
Limit Database                : 1 / 256
DHCP Global Configuration:
=====
DHCP Broadcast Mode          : All
DHCP Allowed Server List    : Disable

```

After reviewing the CLI command output, which two conclusions can you make about the Dynamic Host Configuration Protocol (DHCP) snooping configuration? (Choose two answers)

- A. All ports are untrusted, except port2.
- B. DHCP snooping is disabled globally.
- C. Option 82 is enabled on VLAN 10.
- D. DHCP broadcasts are not restricted.

Answer: C,D

Explanation:

According to the FortiSwitchOS 7.6 Administration Guide and the FortiSwitch 7.6 Study Guide, DHCP snooping is a security feature that acts as a firewall between untrusted hosts and trusted DHCP servers. It validates DHCP messages from untrusted sources and filters out invalid messages.

The provided debug output reveals specific configuration details that support the correct answers:

* Option 82 Support (Option C): The output line `option82-enabled-vlans : 10` explicitly indicates that DHCP Option 82 is active for that specific VLAN. When Option 82 is enabled on a VLAN, the FortiSwitch (acting as a relay agent or snooping device) inserts

information about the physical port and VLAN into the DHCP request packet before it is forwarded to the server. This allows the server to apply location-based IP address allocation policies.

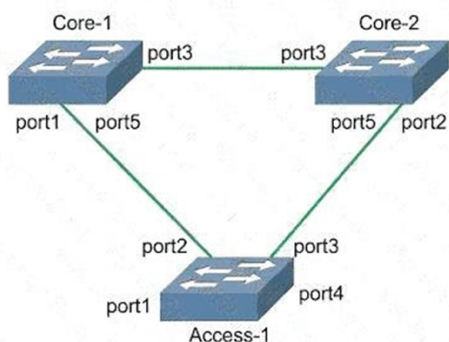
* Broadcast Traffic Handling (Option D): In the "DHCP Global Configuration" section, the DHCP Broadcast Mode is set to All. In FortiSwitchOS 7.6, the default behavior for DHCP snooping is to forward DHCP broadcast traffic to all ports in the VLAN unless explicitly restricted. Setting the mode to "All" means the switch does not limit the propagation of DHCP broadcast packets solely to trusted interfaces; instead, they are flooded to both trusted and untrusted ports within the broadcast domain. To restrict broadcasts, the mode would need to be changed to "Trusted-Only".

Regarding the incorrect options: Option A is false because the output shows snoop-enabled-vlans : 10, confirming it is active. Option B is incorrect because the trusted ports list includes port2, F1lnK1, and MLAG0, meaning multiple interfaces are trusted, not just port2.

NEW QUESTION # 98

Refer to the exhibits.

Network Topology



Diagnose output

```
Core-2 # diagnose stp instance list
MST Instance Information, primary-Channel:
Instance ID      0 (CST)
Config Priority   32768
Bridge MAC       02090f000702
Bridge MAC       02090f000702, MDS Digest ac36177f50283cd4b83821d8ab26de62
Root MAC         02090f000701, Priority 4096, Path Cost 0, Remaining Hops 19
Regional Root MAC 02090f000701, Priority 4096, Path Cost 20000, Root Port port3
Regional Root MAC 02090f000701, Priority 4096, Path Cost 20000, Root Port port3
Active Times Forward Time 1s, Max Age 20, Remaining Hops 19
TCN Events Triggered 4 (0d 0h 27m 23s ago), Received 13 (0d 0h 27m 21s ago)
```

Port	Speed	Cost	Priority	Role	State	HelloTime	Flags
port1	500/s	0	32768	boader	Stated	10	NS
port2	800/s	0	32768	boader	Stated	20	U,DSS
port3	800/s	0	32768	Primary	Stated	10	NS
port4	800/s	0	32768	Primary	Stated	10	NS
port5	400/s	0	4096	Primary	Stated	10	NS
port6	200/s	0	4096	Primary	Stated	10	NS
port7	10000/s	20000	20000	Priority	Stated	10	NS
port8	40000/s	20000	20000	Primary	Stated	10	NS,N
port10	500/s	0	4096	Primary	Stated	20	NS,FS
port11	800/s	0	32768	Primary	Stated	20	NS,F
port12	800/s	0	32768	Primary	Stated	20	NS,F
port13	800/s	0	32768	Primary	Stated	10	NS,F
port14	800/s	0	32768	Primary	Stated	20	NS,F
port15	800/s	0	32768	Primary	Stated	10	NS,F
port16	800/s	0	32768	Primary	Stated	10	NS,F
port17	800/s	0	32768	Primary	Stated	10	NS,F
port18	10000/s	20000	20000	Rootive	Stated	10	NS,PS
port19	800/s	0	32768	Primary	Stated	20	NS,F
port20	800/s	0	32768	Primary	Stated	20	NS,F
port21	800/s	0	32768	Primary	Stated	20	NS,F
port22	800/s	0	32768	Rootive	Stated	10	NS,F
port23	800/s	0	32768	Rootive	Stated	10	NS,DSS
port24	800/s	0	32768	Primary	Stated	20	NS,F
internal		32768	0	Internal	State	1d	
internal		32768	0	Internal	State	1d	

Flags: NS = Flag-debutat, RI = Uhiee by networks, E = Mbit status
VE = debustated, F = Maatile Forward flags

Three FortiSwitch devices in standalone mode are interconnected. The CLI command diagnose stp instance list is executed on Core-2. Based on the output shown in the exhibit, what can you conclude about Core-2? (Choose one answer)

- A. Core-2 is blocking all ports in the Spanning Tree Protocol (STP) topology.
- B. Core-2 is the designated bridge for all VLANs.
- C. Core-2 provides an alternate path to the root bridge.
- D. Core-2 has received Bridge Protocol Data Unit (BPDU) from the root bridge.

Answer: D

Explanation:

According to the FortiSwitchOS 7.6 Administration Guide and the FortiSwitch 7.6 Study Guide, the output of the diagnose stp instance list command provides critical information about the Spanning Tree Protocol (STP) state of a switch within a given instance. In the provided exhibit, the output for Instance ID 0 (CST) on Core-2 shows several key indicators of its role and connectivity within the STP topology.

First, the output explicitly identifies a Root bridge with MAC address 02090f000701 and a priority of 4096.

Core-2 itself has a MAC address of 02090f000702 and a priority of 32768. Because Core-2 knows the MAC address and priority of the Root bridge, it must have received this information via Bridge Protocol Data Units (BPDUs). Furthermore, the port table shows that port3 on Core-2 has been assigned the role of ROOT and is in the FORWARDING state. In STP/RSTP, a Root Port is the port on a non-root switch that has the lowest path cost to the root bridge. To elect a Root Port and maintain its state, the switch must continuously receive BPDUs from the root bridge (or a bridge closer to the root) on that port.

Option B is incorrect because Core-2 has a Root Port, which is only present on non-root bridges. Option C is incorrect because ports 1, 2, 4, 5, and the internal port are all in the FORWARDING state. Option D is incorrect as the output does not show any ports in an ALTERNATE role; all active ports are either ROOT or DESIGNATED. Therefore, the most accurate conclusion is that

Core-2 has successfully received BPDUs to identify the root and determine its own port roles.

NEW QUESTION # 99

Which two statements about VLAN assignments on FortiSwitch ports are true? (Choose two.)

- A. Configure a native VLAN on the FortiLink
- B. Only assign one native VLAN on a port
- C. Assign untagged VLANs using FortiGate CLI
- D. Assign an IP address and subnet mask to FortiSwitch VLANs

Answer: B,C

Explanation:

VLAN assignments on FortiSwitch ports must follow certain rules and guidelines to ensure network integrity and proper traffic segregation:

* Only Assign One Native VLAN on a Port (C):

* Native VLAN Configuration: Each switch port can have only one native VLAN. The native VLAN carries untagged traffic for that port. If the port receives untagged frames, they are assumed to belong to the native VLAN.

* Importance of Singular Native VLAN: This is crucial for preventing VLAN hopping attacks and ensures clear and secure VLAN demarcation on each port.

* Assign Untagged VLANs Using FortiGate CLI (D):

* CLI Configuration: Untagged VLANs, often equivalent to the native VLAN, can be assigned through the FortiGate CLI when managing a FortiSwitch via FortiLink. This allows for central management and configuration of VLANs across connected switches.

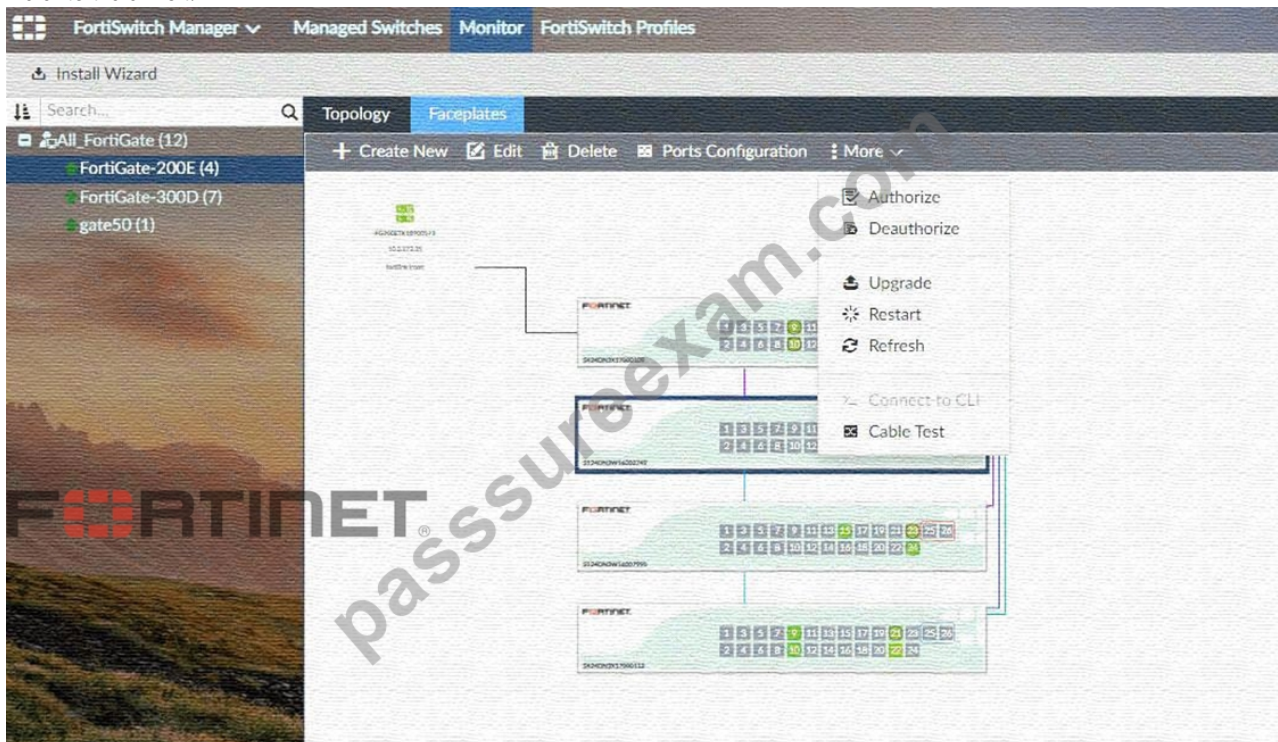
* Operational Efficiency: Using the CLI ensures that VLAN settings are applied uniformly, reducing the likelihood of misconfigurations that might occur when managing VLANs individually on each switch.

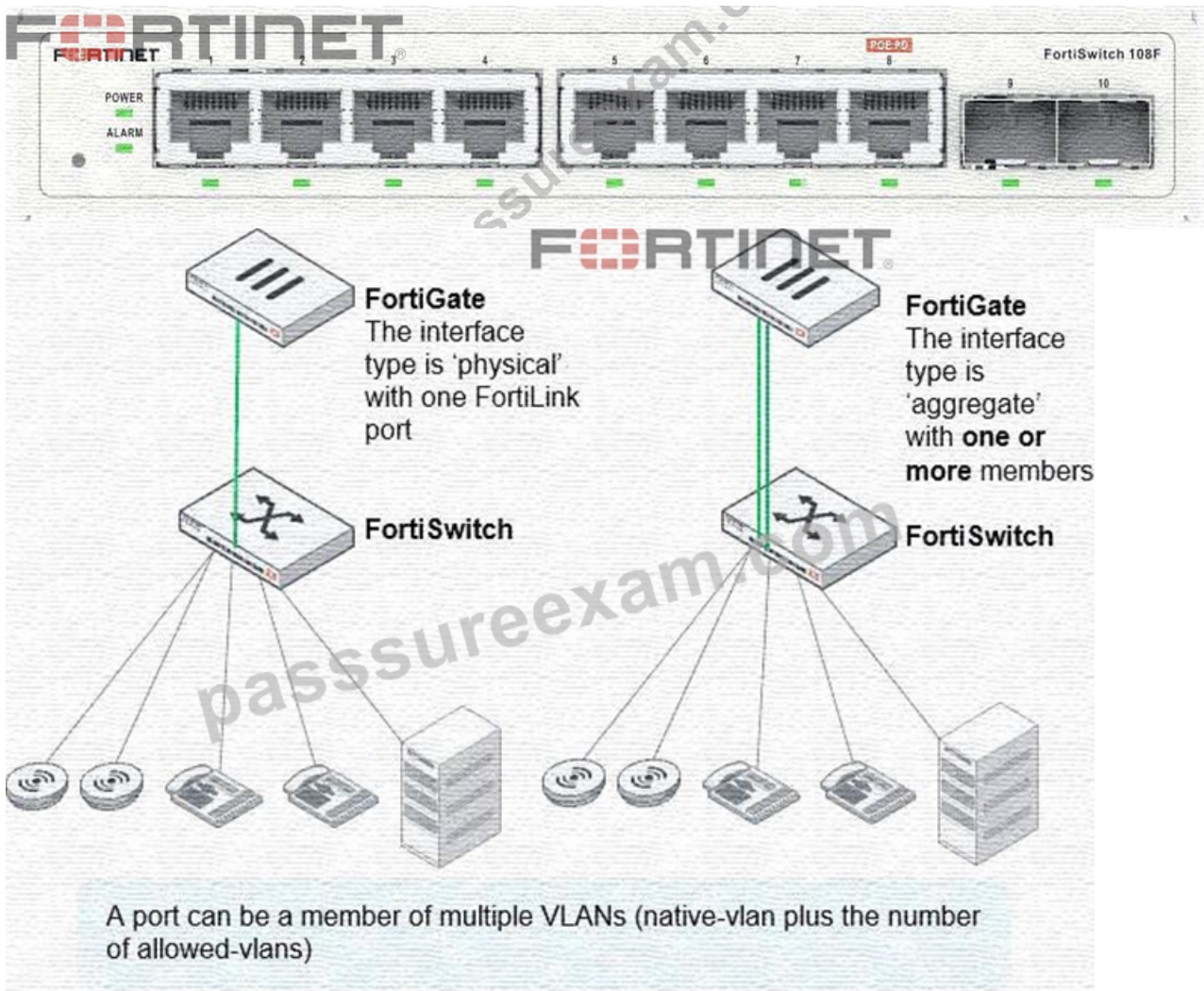
References: For detailed instructions and best practices on VLAN configuration on FortiSwitch, refer to the FortiSwitch administration guide available on: Fortinet Product Documentation

NEW QUESTION # 100

(Full question statement start from here)

Refer to the exhibit.





Which information does FortiGate use to generate the port details in the FortiSwitch Faceplates view?
(Choose one answer)

- A. The FortiSwitch model
- B. The FortiLink discovery frames sent by FortiSwitch
- **C. The LLDP advertisements received from the FortiSwitch**
- D. The Cisco Discovery Protocol (CDP) advertisements from FortiSwitch

Answer: C

Explanation:

In a FortiLink-managed switching architecture, the FortiGate firewall acts as the centralized controller for downstream FortiSwitch devices. The FortiSwitch Faceplates view in the FortiGate GUI provides a physical-style representation of switch ports, including port numbers, operational status, link state, speed, duplex, and connected neighbor information. According to FortiOS 7.6 and FortiSwitchOS 7.6 documentation from Fortinet, this port-level intelligence is derived from Link Layer Discovery Protocol (LLDP) advertisements received from the FortiSwitch.

LLDP is an IEEE 802.1AB standard protocol used for vendor-neutral Layer 2 neighbor discovery.

FortiSwitch periodically sends LLDP frames that include detailed port descriptors such as chassis ID, port ID, port description, system name, system capabilities, and VLAN-related attributes. When FortiGate receives these LLDP advertisements over the FortiLink interface, it correlates the information with the managed FortiSwitch inventory and renders accurate port details in the Faceplates view.

Other options are incorrect for the following reasons. The FortiSwitch model alone is insufficient to populate per-port operational details. Cisco Discovery Protocol (CDP) is a Cisco-proprietary protocol and is not used by FortiGate for Faceplates visualization. FortiLink discovery frames are used to establish and maintain the FortiLink management relationship, but they do not carry the granular per-port metadata required for the Faceplates display.

Therefore, the Faceplates view relies specifically on LLDP advertisements received from the FortiSwitch, making option C the correct and fully verified answer based on FortiOS 7.6 and FortiSwitchOS 7.6 behavior.

NEW QUESTION # 101

Which statement about the configuration of VLANs on a managed FortiSwitch port is true?

- A. Untagged VLANs must be part of the allowed VLANs: ingress and egress.
- **B. The native VLAN is implicitly part of the allowed VLAN on the port.**
- C. Allowed VLANs expand the collision domain to the port.
- D. FortiSwitch VLAN interfaces are created only when FortiSwitch is managed by Forti-Gate.

Answer: B

Explanation:

The native VLAN is implicitly part of the allowed VLAN on the port (C): On a managed FortiSwitch port, the native VLAN, which is the VLAN assigned to untagged traffic, is implicitly included in the list of allowed VLANs. This means it does not need to be explicitly specified when configuring VLAN settings on the port.

This configuration simplifies VLAN management and ensures that untagged traffic is handled correctly without additional configuration steps.

NEW QUESTION # 102

.....

Our NSE5_FSW_AD-7.6 learning guide allows you to study anytime, anywhere. If you are concerned that your study time cannot be guaranteed, then our NSE5_FSW_AD-7.6 learning guide is your best choice because it allows you to learn from time to time and make full use of all the time available for learning. Our online version of NSE5_FSW_AD-7.6 learning guide does not restrict the use of the device. You can use the computer or you can use the mobile phone. You can choose the device you feel convenient at any time. What is more, you can pass the NSE5_FSW_AD-7.6 exam without difficulty.

NSE5_FSW_AD-7.6 Reliable Test Materials: https://www.passsureexam.com/NSE5_FSW_AD-7.6-pass4sure-exam-dumps.html

- NSE5_FSW_AD-7.6 Latest Exam Pass4sure NSE5_FSW_AD-7.6 Real Questions NSE5_FSW_AD-7.6 PDF VCE Search for 「NSE5_FSW_AD-7.6」 on www.pdf dumps.com immediately to obtain a free download NSE5_FSW_AD-7.6 Authorized Exam Dumps
- Dump NSE5_FSW_AD-7.6 Collection Frequent NSE5_FSW_AD-7.6 Update NSE5_FSW_AD-7.6 PDF VCE Search for 《NSE5_FSW_AD-7.6》 and easily obtain a free download on www.pdfvce.com New NSE5_FSW_AD-7.6 Test Simulator
- Pass Guaranteed Quiz NSE5_FSW_AD-7.6 - Valid Certificate Fortinet NSE 5 - FortiSwitch 7.6 Administrator Exam Open www.validtorrent.com enter **【NSE5_FSW_AD-7.6】** and obtain a free download NSE5_FSW_AD-7.6 Reliable Exam Vce
- New Certificate NSE5_FSW_AD-7.6 Exam | Valid NSE5_FSW_AD-7.6: Fortinet NSE 5 - FortiSwitch 7.6 Administrator 100% Pass Search for 「NSE5_FSW_AD-7.6」 and obtain a free download on 《www.pdfvce.com》 New NSE5_FSW_AD-7.6 Exam Guide
- NSE5_FSW_AD-7.6 Real Questions Reliable NSE5_FSW_AD-7.6 Exam Online NSE5_FSW_AD-7.6 Authorized Exam Dumps Immediately open www.prepawayete.com and search for NSE5_FSW_AD-7.6 to obtain a free download Dump NSE5_FSW_AD-7.6 Collection
- Salient Features of Desktop Fortinet NSE5_FSW_AD-7.6 Practice Tests Software Search for [NSE5_FSW_AD-7.6] and obtain a free download on { www.pdfvce.com } Test NSE5_FSW_AD-7.6 Price
- Salient Features of Desktop Fortinet NSE5_FSW_AD-7.6 Practice Tests Software Easily obtain NSE5_FSW_AD-7.6 for free download through www.prepawaypdf.com NSE5_FSW_AD-7.6 Interactive Course
- Reliable NSE5_FSW_AD-7.6 Exam Online NSE5_FSW_AD-7.6 Valid Test Discount Valid Exam NSE5_FSW_AD-7.6 Registration Enter www.pdfvce.com and search for 《NSE5_FSW_AD-7.6》 to download for free NSE5_FSW_AD-7.6 Real Questions
- Valid Exam NSE5_FSW_AD-7.6 Registration Valid Exam NSE5_FSW_AD-7.6 Registration Dump NSE5_FSW_AD-7.6 Collection The page for free download of NSE5_FSW_AD-7.6 on 《www.practicevce.com》 will open immediately NSE5_FSW_AD-7.6 PDF VCE
- Fantastic Certificate NSE5_FSW_AD-7.6 Exam - Leader in Qualification Exams - Pass-Sure NSE5_FSW_AD-7.6: Fortinet NSE 5 - FortiSwitch 7.6 Administrator www.pdfvce.com is best website to obtain 「NSE5_FSW_AD-7.6」 for free download Dump NSE5_FSW_AD-7.6 Collection
- NSE5_FSW_AD-7.6 Interactive Course Reliable NSE5_FSW_AD-7.6 Exam Online New NSE5_FSW_AD-7.6 Test Tips Easily obtain NSE5_FSW_AD-7.6 for free download through www.vceengine.com Dump NSE5_FSW_AD-7.6 Collection

- bookmarksden.com, yxzbookmarks.com, ilovebookmarking.com, miriamrummy544526.bimnwiki.com, hassanektd685507.birderswiki.com, albiexege491887.blogpayz.com, ticketsbookmarks.com, socialmediastore.net, gerardyhsj842775.wiki-jp.com, reallivesocial.com, Disposable vapes

P.S. Free & New NSE5_FSW_AD-7.6 dumps are available on Google Drive shared by PassSureExam:
https://drive.google.com/open?id=1Hi4zW_b_67MUxCnNTuOmpJ7QHJ0fadqU