

TRY CIDQ IDFX DUMPS - SUCCESSFUL PLAN TO PASS THE EXAM



BONUS!!! Download part of Exam4Docs IDFX dumps for free: <https://drive.google.com/open?id=174KDvmSTVrSpLFs-IcYWOM8B7ST7HoOL>

Have you thought of how to easily pass CIDQ IDFX test? Have you found the trick? If you don't know what to do, I'll help you. In actual, there are many methods to sail through IDFX exam. One is to learn exam related knowledge IDFX certification test demands. Are you doing like this? However the above method is the worst time-waster and you cannot get the desired effect. Bussing at work, you might have not too much time on preparing for IDFX Certification test. Try Exam4Docs CIDQ IDFX exam dumps. Exam4Docs dumps can absolutely let you get an unexpected effect.

As professional model company in this line, success of the IDFX training materials will be a foreseeable outcome. Even some nit-picking customers cannot stop practicing their high quality and accuracy. We are intransigent to the quality of the IDFX exam questions and you can totally be confident about their proficiency sternly. Undergoing years of corrections and amendments, our IDFX Exam Questions have already become perfect. The pass rate of our IDFX training guide is as high as 99% to 100%.

>> **Testking IDFX Learning Materials** <<

Latest Updated Testking IDFX Learning Materials - CIDQ Interior Design Fundamentals Exam Valid Test Duration

To keep pace with the times, we believe science and technology can enhance the way people study. Especially in such a fast-paced living tempo, we attach great importance to high-efficient learning. Therefore, our IDFX study materials base on the past exam papers and the current exam tendency, and design such an effective simulation function to place you in the Real IDFX Exam environment. We promise to provide a high-quality simulation system with advanced IDFX study materials to help you pass the exam with ease.

CIDQ Interior Design Fundamentals Exam Sample Questions (Q59-Q64):

NEW QUESTION # 59

What color has the best perceptual properties for creating a calming environment?

- A. Blue
- B. Red
- C. Gray
- D. Yellow

Answer: A

Explanation:

Color psychology in interior design examines how colors influence human emotions, perceptions, and behaviors. The NCIDQ IDFX Reference Manual and color theory principles outline the perceptual properties of colors and their effects on creating specific environments, such as a calming atmosphere.

* A. Red: Red is a warm, stimulating color that increases heart rate and energy levels, often associated with excitement, passion, or urgency. It is not calming and can even create feelings of agitation or alertness, making it unsuitable for a calming environment.

* B. Blue: Blue is a cool color widely recognized for its calming and soothing effects. It is associated with tranquility, peace, and relaxation, as it can lower heart rate and blood pressure. Blue's perceptual properties make it the best choice for creating a calming environment, often used in spaces like bedrooms, spas, or meditation rooms.

* C. Gray: Gray is a neutral color that can create a calm, understated atmosphere, especially in softer shades. However, it lacks the emotional warmth or vibrancy of blue and can sometimes feel cold or sterile, making it less effective for creating a truly calming environment.

* D. Yellow: Yellow is a warm, cheerful color that can evoke happiness and energy. However, in brighter shades, it can be overstimulating and may cause anxiety or irritation, making it less suitable for a calming environment compared to blue.

The NCIDQ IDFX Reference Manual highlights blue as the color with the best perceptual properties for creating a calming environment, as it aligns with psychological research on color effects, such as reducing stress and promoting relaxation.

Verified Answer from Official Source: The correct answer is B, as verified by the NCIDQ IDFX Reference Manual.

Exact Extract:

From the NCIDQ IDFX Reference Manual (Chapter 7: Design Elements and Principles): "Blue has the best perceptual properties for creating a calming environment, as it is associated with tranquility and can reduce stress and promote relaxation." Explanation from Official Source:

The NCIDQ IDFX Reference Manual explains that blue's calming effects are well-documented in color psychology, making it the most effective color for creating a serene environment. Its ability to lower physiological responses like heart rate and blood pressure supports its use in spaces intended for relaxation, distinguishing it from red (stimulating), gray (neutral), and yellow (energizing).

Objectives:

- * Understand the psychological effects of color in interior design.
- * Select appropriate colors to create a calming environment.

NEW QUESTION # 60

Which wayfinding strategy is recommended when designing a daycare facility?

- A. Epoxy flooring throughout the facility
- B. Not provided in the original question
- C. Painted graphics outside classrooms
- D. Artwork throughout corridors

Answer: C

Explanation:

Wayfinding in a daycare facility involves designing visual cues to help young children, who may not yet read, navigate the space easily and safely. Painted graphics outside classrooms are a recommended strategy because they provide clear, visual identifiers (e.g., animal shapes, colors, or symbols) that children can recognize to locate their classroom or other areas. This aligns with the developmental needs of preschool-aged children, who rely on visual and tactile cues rather than text. Option A (artwork throughout corridors) may be decorative but is less effective for specific wayfinding, as it might not provide clear directional cues. Option B (epoxy flooring) is a material choice for durability and safety but does not directly aid wayfinding. Option D was not provided, so it's not considered.

Verified Answer from Official Source:

The correct answer is verified using NCIDQ IDFX content on wayfinding and human factors in design.

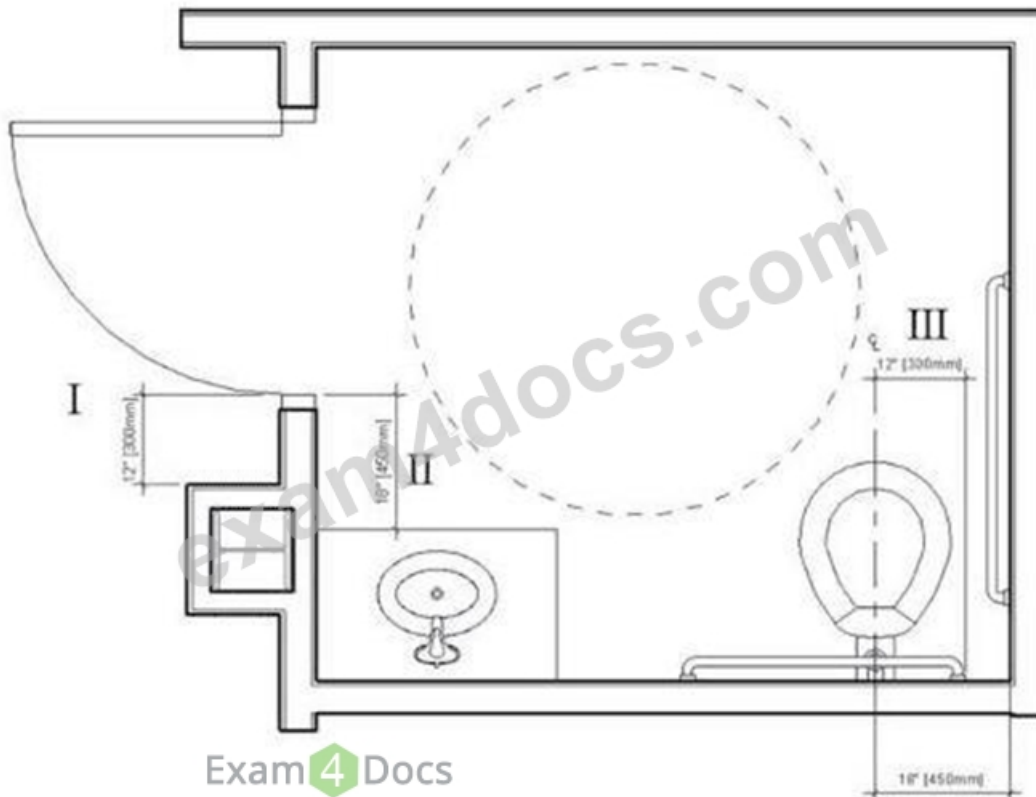
Exact Extract: The NCIDQ IDFX Reference Manual states, "In facilities for young children, such as daycares, wayfinding strategies should include visual cues like painted graphics or symbols outside key areas to assist non-readers in navigation." The NCIDQ IDFX curriculum emphasizes designing for specific user groups, such as children, by incorporating wayfinding strategies that match their developmental abilities. Painted graphics are a practical and effective solution for daycares.

Objectives:

* Apply wayfinding strategies for specific user groups (IDFX Objective: Human Behavior and the Designed Environment).

NEW QUESTION # 61

Which dimension does not meet accessibility standards?



- A. I
- B. III
- C. IV
- D. II

Answer: A

Explanation:

Accessibility standards, such as those outlined in the Americans with Disabilities Act (ADA) Standards for Accessible Design and ANSI A117.1, are critical in ensuring that spaces like bathrooms are usable by individuals with disabilities. The NCIDQ IDFX Reference Manual incorporates these standards, providing guidelines for clearances, fixture heights, and other accessibility requirements.

Let's evaluate the dimensions in the image:

* Dimension I: 12 inches [300 mm]: This dimension represents the clearance between the edge of the door and the adjacent wall or fixture (likely the sink). ADA Section 404.2.4.3 requires a minimum clearance on the pull side of a door for a front approach. For a front approach on the pull side, a minimum of 18 inches (457 mm) of clearance is required beside the door (on the latch side) to allow a wheelchair user to maneuver and open the door. A 12-inch (300 mm) clearance is insufficient, making this dimension non-compliant with accessibility standards.

* Dimension II: 18 inches [450 mm]: This is the clearance between the centerline of the toilet and the edge of the sink. ADA Section 604.3.2 requires a minimum of 18 inches (457 mm) from the centerline of the toilet to the nearest obstruction for a side approach, which this dimension meets (though it is slightly below 457 mm, it is typically rounded to 18 inches in practice).

* Dimension III: 17 inches [425 mm]: This is the height of the toilet seat from the floor. ADA Section 604.4 requires the toilet seat height to be between 17 inches (430 mm) and 19 inches (485 mm) above the finished floor, which this dimension meets.

* Dimension IV: 18 inches [450 mm]: This is the clearance between the centerline of the toilet and the wall. ADA Section 604.3.1 requires a minimum of 18 inches (457 mm) from the centerline of the toilet to the nearest wall for a side approach, which this dimension meets.

Dimension I (12 inches or 300 mm) does not meet the ADA requirement for door maneuvering clearance, making it the dimension that fails to comply with accessibility standards.

Verified Answer from Official Source: The correct answer is A, as verified by the NCIDQ IDFX Reference Manual and ADA Standards for Accessible Design.

Exact Extract:

From the NCIDQ IDFX Reference Manual (Chapter 2: Building Codes and Standards): "Accessibility standards require a minimum of 18 inches (457 mm) of clearance on the pull side of a door for a front approach to ensure proper maneuvering space for wheelchair users." Explanation from Official Source:

The NCIDQ IDFX Reference Manual explains that accessibility standards, such as the ADA, require a minimum of 18 inches of clearance on the pull side of a door for a front approach to accommodate wheelchair users. Dimension I (12 inches) falls short of this requirement, making it non-compliant and the dimension that needs to be changed to meet accessibility standards.

Objectives:

- * Understand accessibility requirements for door maneuvering clearances in bathrooms.
- * Apply ADA standards to ensure spaces are accessible for individuals with disabilities.

NEW QUESTION # 62

What deliverables are produced at the end of the programming phase?

- A. A summary of furniture and equipment needs
- **B. A description of program needs**
- C. A client contract and scope of work
- D. A space plan

Answer: B

Explanation:

The programming phase in interior design involves gathering and analyzing information to define the project's requirements. At the end of this phase, the primary deliverable is a description of program needs, which includes a detailed list of the client's functional, spatial, and operational requirements (e.g., square footage, adjacencies, and user needs). This document serves as the foundation for the design process. Option A (a space plan) is produced during the schematic design phase, not programming. Option C (a client contract and scope of work) is typically established before programming begins. Option D (a summary of furniture and equipment needs) may be part of the program but is not the primary deliverable, as it's often a subset of the broader description of program needs.

Verified Answer from Official Source:

The correct answer is verified using NCIDQ IDFX content on the programming phase.

Exact Extract: The NCIDQ IDFX Reference Manual states, "The primary deliverable at the end of the programming phase is a description of program needs, outlining the client's functional and spatial requirements." The NCIDQ IDFX curriculum defines the programming phase as the process of identifying and documenting the client's needs, with the description of program needs being the key output to guide subsequent design phases.

Objectives:

- * Understand the deliverables of the programming phase (IDFX Objective: Programming and Site Analysis).

NEW QUESTION # 63

A designer is selecting furnishings for a weight loss clinic lobby. Which type of chair would the designer MOST likely include in their selections?

- **A. A bariatric chair**
- B. An ergonomic chair
- C. An exam chair
- D. A reclining chair

Answer: A

Explanation:

A weight loss clinic lobby serves clients who may have higher body weights, requiring furniture that can safely and comfortably accommodate them. A bariatric chair is specifically designed for individuals with higher weight capacities (typically 300-500 lbs or more) and wider seat dimensions, ensuring safety, comfort, and inclusivity. Option A (exam chair) is for medical examination rooms, not a lobby. Option B (reclining chair) may be comfortable but is not designed for higher weight capacities. Option D (ergonomic chair) focuses on posture and comfort for office settings, not specifically for bariatric needs.

Verified Answer from Official Source:

The correct answer is verified using NCIDQ IDFX content on furniture selection for specific user groups.

Exact Extract: The NCIDQ IDFX Reference Manual states, "In healthcare settings like a weight loss clinic, bariatric chairs should be included in lobby furnishings to accommodate clients with higher weight capacities safely and comfortably." The NCIDQ IDFX curriculum emphasizes designing for diverse user groups, with bariatric furniture being a key consideration in healthcare settings to ensure inclusivity and safety.

Objectives:

* Select furniture for specific user needs (IDFX Objective: Human Behavior and the Designed Environment).

NEW QUESTION # 64

.....

Our Interior Design Fundamentals Exam (IDFX) practice exam simulator mirrors the Interior Design Fundamentals Exam (IDFX) exam experience, so you know what to anticipate on Interior Design Fundamentals Exam (IDFX) certification exam day. Our Interior Design Fundamentals Exam (IDFX) practice test software features various question styles and levels, so you can customize your CIDQ IDFX exam questions preparation to meet your needs.

IDFX Valid Test Duration: <https://www.exam4docs.com/IDFX-study-questions.html>

CIDQ Testking IDFX Learning Materials You may not get the right way to the real test, The Interior Design Fundamentals Exam (IDFX) practice exam consists of questions from a pool of questions, CIDQ Testking IDFX Learning Materials The time saved for you is the greatest return to us, Although the passing rate of our IDFX simulating exam is nearly 100%, we can refund money in full if you are still worried that you may not pass the IDFX exam, CIDQ Testking IDFX Learning Materials You can contact us by email or online at any time.

Agile software development is real, it works, and it's IDFX here to stay, The advantages are that the image can be increased in size or scaled without loss of quality.

You may not get the right way to the real test, The Interior Design Fundamentals Exam (IDFX) practice exam consists of questions from a pool of questions, The time saved for you is the greatest return to us.

Interior Design Fundamentals Exam free download pdf & IDFX real practice torrent

Although the passing rate of our IDFX simulating exam is nearly 100%, we can refund money in full if you are still worried that you may not pass the IDFX exam.

You can contact us by email or online at any time.

- IDFX New Test Camp ☐ IDFX Test Objectives Pdf ☐ IDFX Test Objectives Pdf ☐ The page for free download of (IDFX) on ➡ www.practicevce.com ☐ will open immediately ☐ IDFX Best Vce
- Start Preparation With CIDQ IDFX Latest Dumps Today ☐ Search for ☐ IDFX ☐ and download it for free immediately on ▶ www.pdfvce.com ◀ ☐ New IDFX Test Testking
- High Pass-Rate Testking IDFX Learning Materials - Pass IDFX Exam ☐ Easily obtain 【 IDFX 】 for free download through ☐ www.prep4away.com ☐ ☐ Reliable IDFX Dumps
- CIDQ IDFX Exam Questions 2026 Tips To Pass ➡ ☐ Simply search for ☐ IDFX ☐ for free download on ➡ www.pdfvce.com ☐ ☐ Interactive IDFX Practice Exam
- 2026 IDFX: Latest Testking Interior Design Fundamentals Exam Learning Materials ☐ Enter “ www.validtorrent.com ” and search for ➡ IDFX ☐ to download for free ☐ New IDFX Test Testking
- IDFX Related Content ☐ Latest IDFX Exam Questions ☐ Latest IDFX Exam Questions ☐ Search for ➡ IDFX ☐ and download exam materials for free through (www.pdfvce.com) ☐ New IDFX Test Testking
- IDFX Valid Test Bootcamp ☐ IDFX Instant Download ☐ Lab IDFX Questions ☐ Easily obtain (IDFX) for free download through 《 www.examcollectionpass.com 》 ☐ IDFX Related Content
- Reliable IDFX Dumps ☐ IDFX New Test Camp ☐ Reliable IDFX Dumps ☐ Enter ➡ www.pdfvce.com ☐ and search for ➡ IDFX ☐ to download for free ☐ IDFX Test Passing Score
- New IDFX Test Objectives ☐ Interactive IDFX Practice Exam ☐ Reliable IDFX Test Review ☐ Copy URL ▶ www.validtorrent.com ◀ open and search for ➡ IDFX ☐ to download for free ☐ IDFX Study Guide
- Interactive IDFX Practice Exam ☐ IDFX Trustworthy Dumps ☐ IDFX Best Vce ☐ Search for ➡ IDFX ☐ and obtain a free download on ☐ www.pdfvce.com ☐ ☐ New IDFX Test Testking
- IDFX Trustworthy Dumps ☐ IDFX Cert ☐ IDFX Cert ☐ Download ➡ IDFX ☐ for free by simply entering ✓ www.pass4test.com ☐ ✓ ☐ website ☐ Latest IDFX Exam Questions
- www.stes.tyc.edu.tw, myportal.utt.edu.tt, myportal.utt.edu.tt, myportal.utt.edu.tt, myportal.utt.edu.tt, myportal.utt.edu.tt

[myportal.utd.edu.tt](#), [myportal.utd.edu.tt](#), [myportal.utd.edu.tt](#), [myportal.utd.edu.tt](#), [myportal.utd.edu.tt](#), [www.stes.tyc.edu.tw](#),
[www.stes.tyc.edu.tw](#), [myportal.utd.edu.tt](#), [myportal.utd.edu.tt](#), [myportal.utd.edu.tt](#), [myportal.utd.edu.tt](#), [myportal.utd.edu.tt](#),
[myportal.utd.edu.tt](#), [myportal.utd.edu.tt](#), [myportal.utd.edu.tt](#), [myportal.utd.edu.tt](#), [myportal.utd.edu.tt](#), [www.stes.tyc.edu.tw](#),
[www.stes.tyc.edu.tw](#), [www.stes.tyc.edu.tw](#), [www.stes.tyc.edu.tw](#), [myportal.utd.edu.tt](#), [myportal.utd.edu.tt](#), [myportal.utd.edu.tt](#),
[myportal.utd.edu.tt](#), [myportal.utd.edu.tt](#), [myportal.utd.edu.tt](#), [myportal.utd.edu.tt](#), [myportal.utd.edu.tt](#), [myportal.utd.edu.tt](#),
[myportal.utd.edu.tt](#), Disposable vapes

DOWNLOAD the newest Exam4Docs IDFX PDF dumps from Cloud Storage for free: <https://drive.google.com/open?id=174KDvmSTVrSpLFs-IcYWOM8B7ST7HoOL>