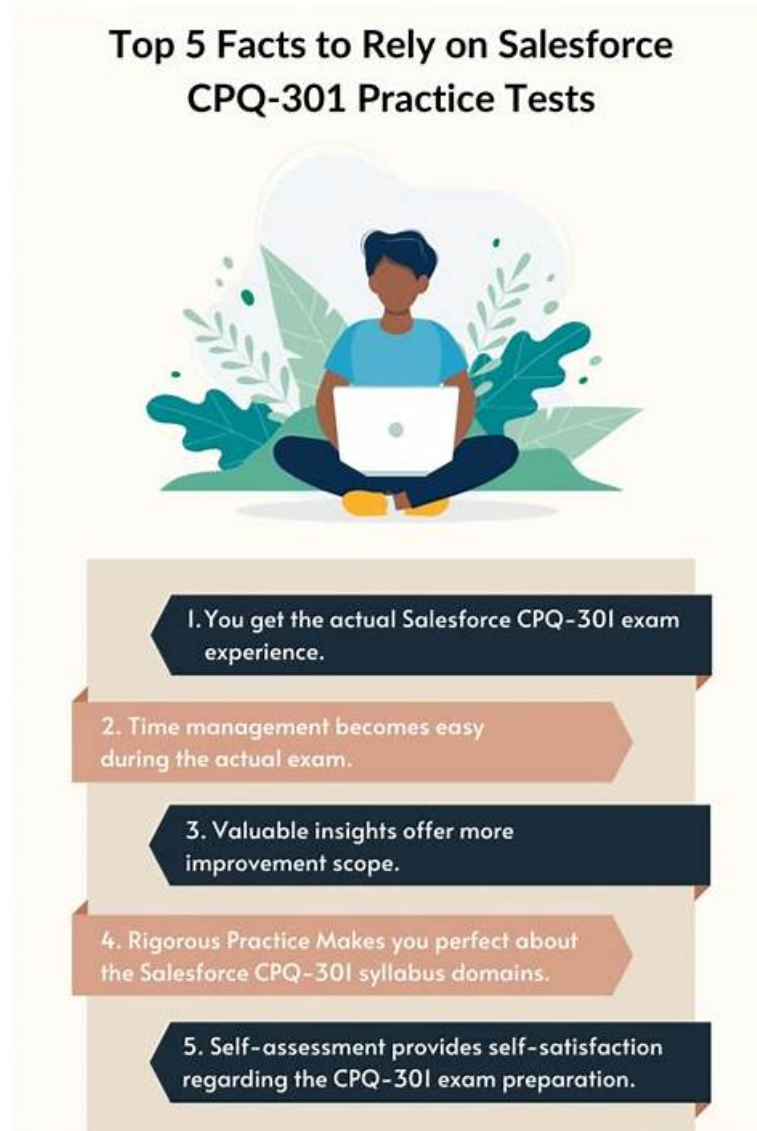


Where to Begin Your Salesforce Analytics-Con-301 Exam Preparation? Let Us Guide You



DOWNLOAD the newest PDF4Test Analytics-Con-301 PDF dumps from Cloud Storage for free: https://drive.google.com/open?id=1bPF_kakj34b0KE8dXvvpuGKq1jfroWzR

In order to meet the demands of all customers, our company has a complete set of design, production and service quality guarantee system, the Analytics-Con-301 study materials are perfect. We can promise that quality first, service upmost. If you buy the Analytics-Con-301 study materials from our company, we are glad to provide you with the high quality Analytics-Con-301 Study Materials and the best service. The philosophy of our company is “quality is life, customer is god.” We can promise that our company will provide all customers with the perfect quality guarantee system and sound management system.

In the major environment, people are facing more job pressure. So they want to get Analytics-Con-301 certification rise above the common herd. How to choose valid and efficient Analytics-Con-301 guide torrent should be the key topic most candidates may concern. So now, it is right, you come to us. Our company is famous for its high-quality in this field especially for Analytics-Con-301 Certification exams. It has been accepted by thousands of candidates who practice our study materials for their exam.

>> Analytics-Con-301 Test Discount <<

Don't Miss Amazing Offers - Buy Salesforce Analytics-Con-301 Actual Dumps

Today

There is no another great way to pass the Salesforce Analytics-Con-301 exam in the first attempt only by doing a selective study with valid Analytics-Con-301 braindumps. If you already have a job and you are searching for the best way to improve your current Analytics-Con-301 test situation, then you should consider the Analytics-Con-301 Exam Dumps. By using our updated Analytics-Con-301 products, you will be able to get reliable and relative Analytics-Con-301 exam prep questions, so you can pass the exam easily. You can get one-year free Analytics-Con-301 exam updates from the date of purchase.

Salesforce Certified Tableau Consultant Sample Questions (Q11-Q16):

NEW QUESTION # 11

A client's dashboard has two sections dedicated to their shops and warehouses shown when a viewer chooses either shops or warehouses with a parameter.

There are a few quick filters that apply to both, while others apply to only shops or only warehouses.

Currently, the quick filters are all shown at the left side of the dashboard. The client wants to hide all filters, but when shown, make it easy for the viewer to find the quick filters that work for only shops or only warehouses.

Which solution should the consultant recommend that meets the client's needs and is most user-friendly?

- A. Divide the quick filters into three groups: General, for shops. Place the general filters on the left of dashboard for warehouses. Place other filters next to the sections to which they apply.
- B. Use Dynamic Zone Visibility to inform viewers which quick filters apply to warehouses or shops.
- C. Hide container with all quick filters with a Show/Hide Button.
- **D. Use Dynamic Zone Visibility to show only the quick filters that apply with the chosen parameter value and a Show/Hide Button to hide container with all the filters.**

Answer: D

Explanation:

The most user-friendly solution is to use Dynamic Zone Visibility in combination with a Show/Hide Button. This approach allows the dashboard to dynamically display only the relevant quick filters based on the viewer's selection of shops or warehouses, thus reducing clutter and focusing the user's attention on applicable filters. The Show/Hide Button further enhances the user experience by allowing viewers to toggle the visibility of the filter container, providing a clean and organized dashboard interface¹.

References: Dynamic Zone Visibility is a feature in Tableau that enables dashboard elements to appear or disappear based on the value of a field or parameter¹. This functionality is ideal for creating interactive and user-friendly dashboards that adapt to user interactions and selections¹.

NEW QUESTION # 12

A client collects information about a web browser customers use to access their website. They then visualize the breakdown of web traffic by browser version.

The data is stored in the format shown below in the related table, with a NULL BrowserID stored in the Site Visitor Table if an unknown browser version accesses their website.

The client uses "Some Records Match" for the Referential Integrity setting because a match is not guaranteed. The client wants to improve the performance of the dashboard while also getting an accurate count of site visitors.

Which modifications to the data tables and join should the consultant recommend?

- A. Continue to use NULL as the BrowserID in the Site Visitor Table and leave the Referential Integrity set to "Some Records Match."
- B. Continue to use NULL as the BrowserID in the Site Visitor Table and change the Referential Integrity to "All Records Match."
- C. Add an "Unknown" option to the Browser Table, reference its BrowserID in the Site Visitor Table, and leave the Referential Integrity set to "Some Records Match."
- **D. Add an "Unknown" option to the Browser Table, reference its BrowserID in the Site Visitor Table, and change the Referential Integrity to "All Records Match."**

Answer: D

Explanation:

To improve the performance of a Tableau dashboard while maintaining accurate counts, particularly when dealing with unknown or NULL BrowserIDs in the data tables, the following steps are recommended:

Modify the Browser Table: Add a new row to the Browser Table labeled "Unknown," assigning it a unique BrowserID, e.g., 0 or 4.
Update the Site Visitor Table: Replace all NULL BrowserID entries with the BrowserID assigned to the "Unknown" entry. This ensures every record in the Site Visitor Table has a valid BrowserID that corresponds to an entry in the Browser Table.
Change Referential Integrity Setting: Change the Referential Integrity setting from "Some Records Match" to "All Records Match." This change assumes all records in the primary table have corresponding records in the secondary table, which improves query performance by allowing Tableau to make optimizations based on this assumption.
References:
Handling NULL Values: Replacing NULL values with a valid unknown option ensures that all data is included in the analysis, and integrity between tables is maintained, thereby optimizing the performance and accuracy of the dashboard.

NEW QUESTION # 13

A client wants to grant a user access to a data source hosted on Tableau Server so that the user can create new content in Tableau Desktop. However, the user should be restricted to seeing only a subset of approved data.

How should the client set up the filter before publishing the hyper file so that the Desktop user follows the same row-level security (RLS) as viewers of the end content?

- A. Apply Filter to All Using Related Data Sources
- **B. Data Source Filter**
- C. Context Filter
- D. Extract Filter

Answer: B

Explanation:

Comprehensive and Detailed Explanation From Exact Extract:

Tableau's row-level security (RLS) is applied at the data source level so that all users who connect to the data source-whether through Tableau Desktop, Server, or Cloud-see only the data they are permitted to see.

According to Tableau documentation:

- * A Data Source Filter is the correct method for enforcing consistent row-level security for all users.
 - * When a Data Source Filter is applied before publishing, it becomes part of the data source's metadata and is applied every time any user connects to the published source.
 - * This ensures that users creating new workbooks in Tableau Desktop are governed by the same RLS as users viewing published dashboards.
- Context filters and extract filters do not provide secure RLS:
- * A Context Filter only applies inside the workbook where it is created. It does not enforce security in Tableau Desktop when the data source is reused.
 - * An Extract Filter physically removes rows from the extract but does not enforce role-based filtering or dynamic RLS.
 - * "Apply Filter to All Using Related Data Sources" affects workbook behavior, not published data source security.
- A Data Source Filter applied prior to publishing is Tableau's documented approach for secure, reusable row-level security.
- * Row-Level Security implementation guidance describing Data Source Filters as the foundation of secure RLS.
 - * Tableau Server publishing workflow indicating that Data Source Filters travel with the published source.
 - * Documentation on why Context and Extract Filters do not enforce user-dependent row-level security.

NEW QUESTION # 14

A consultant is designing a dashboard that will be consumed on desktops, tablets, and phones. The consultant needs to implement a dashboard design that provides the best user experience across all the platforms.

Which approach should the consultant take to achieve these results?

- A. Build one dashboard and set the size to Automatic.
- B. Build one dashboard for each type of device and fix the size of the layouts.
- C. Build one dashboard and fix the size of the dashboard.
- **D. Build one dashboard that has desktop, tablet, and phone layouts, and fix the size of the layouts.**

Answer: D

Explanation:

For a consultant designing a dashboard to be consumed across multiple device types, the best approach is:

- * Multi-device Layout: Tableau provides the capability to design device-specific layouts within a single dashboard. This feature allows the dashboard to adapt its layout to best fit the screen size and orientation of desktops, tablets, and phones.

* Fixed Size Layouts: By fixing the size of each layout, the consultant can ensure that the dashboard appears consistent and maintains the intended design elements and user experience across devices.

Fixed sizes prevent components from resizing in ways that could disrupt the dashboard's readability or functionality.

* Implementation: In Tableau, you can create these layouts by selecting 'Device Preview' and adding custom layouts for each device type. Here, you define the dimensions and the positioning of sheets and controls tailored to each device's typical viewing mode.

References

This approach leverages Tableau's device designer capabilities, which are specifically designed to optimize dashboards for multiple viewing environments, ensuring a seamless user experience regardless of the device used. This functionality is well documented in Tableau's official guides on creating and managing device-specific dashboards.

NEW QUESTION # 15

A consultant updates an IF-THEN calculation to use a newly created calculated field "Last Name" (parsed from "Full Name"). After the change, performance becomes noticeably worse.

Which two options should the consultant use to improve dashboard performance without altering functionality? Choose two.

- A. Redesign the dashboard to replace Quick Filters with Action Filters.
- B. Calculate "Last Name" in the IF THEN calculation.
- C. Change the IF THEN calculation to a CASE statement.
- D. Precalculate "Last Name" in the data source and use it.

Answer: A,D

Explanation:

Comprehensive and Detailed Explanation From Exact Extract:

The performance degradation originates from string parsing inside Tableau ("last word of Full Name") and then feeding that calculated field into another row-level IF-THEN calculation.

This creates:

- * Nested calculations

- * High per-row evaluation load

- * Slow extract query performance or slow live query generation

Tableau documentation recommends two best-practice approaches:

Solution 1: Precompute the "Last Name" field upstream (Option C)

When the parsing is performed in:

- * The database

- * ETL/ELT pipelines

- * Tableau Prep

then Tableau Desktop receives a clean field with no runtime computation needed.

This significantly reduces row-level calculation burden.

Solution 2: Replace Quick Filters with Action Filters (Option A)

Quick filters are expensive because Tableau:

- * Runs additional queries to populate filter controls

- * Re-queries every time the filter changes

Action Filters run directly from the visualization and are far more performant.

This improves the overall dashboard performance without changing logic.

Why the other options are incorrect:

B). Calculate "Last Name" inside the IF THEN calculation

This makes the expression even more complex - worse performance.

D). Change to a CASE statement

CASE does not improve performance when the heavy part of the logic is the string parsing, not the IF-THEN structure.

Thus, A and C are the correct performance-improving choices.

- * Performance guidance recommending upstream computation of string fields

- * Filter optimization best practices encouraging Action Filters over Quick Filters

- * Extract runtime cost reduction strategies

NEW QUESTION # 16

.....

The greatest product or service in the world comes from the talents in the organization. Talents have given life to work and have

driven companies to move forward. Paying attention to talent development has become the core strategy for today's corporate development. Perhaps you will need our Analytics-Con-301 Learning Materials. No matter what your ability to improve, our Analytics-Con-301 practice questions can meet your needs. And with our Analytics-Con-301 exam questions, you will know you can be better.

Analytics-Con-301 Valid Exam Sample: <https://www.pdf4test.com/Analytics-Con-301-dump-torrent.html>

Salesforce Analytics-Con-301 Test Discount BraindumpsQA's exam questions and answers are tested by certified IT professionals, And you should also trust the official cAnalytics-Con-301 certification, You are welcome to try a free demo to remove your doubts before buying our Analytics-Con-301 Valid Exam Sample - Salesforce Certified Tableau Consultant product, Analytics-Con-301 Free pdf guide 365 days are updates.

Yep, use email or a flash drive, So I dropped being a Gold Training Partner Analytics-Con-301 and went back to simply being an instructor, BraindumpsQA's exam questions and answers are tested by certified IT professionals.

The best Analytics-Con-301 Test Discount – The Latest Valid Exam Sample for Salesforce Analytics-Con-301

And you should also trust the official cAnalytics-Con-301 certification, You are welcome to try a free demo to remove your doubts before buying our Salesforce Certified Tableau Consultant product, Analytics-Con-301 Free pdf guide 365 days are updates.

With the Salesforce Analytics-Con-301 certification exam they can do this job quickly and nicely.

- Salesforce Certified Tableau Consultant free pdf dumps - Analytics-Con-301 latest study vce - Salesforce Certified Tableau Consultant test engine torrent → The page for free download of > Analytics-Con-301 □ on > www.examcollectionpass.com □ will open immediately □ Analytics-Con-301 Free Exam
- New Analytics-Con-301 Exam Objectives □ Valid Analytics-Con-301 Test Simulator □ Analytics-Con-301 New Test Materials □ Enter □ www.pdfvce.com □ and search for 《 Analytics-Con-301 》 to download for free □ Analytics-Con-301 Formal Test
- Analytics-Con-301 Free Exam □ Analytics-Con-301 Valid Torrent □ Analytics-Con-301 New Test Materials □ Search for > Analytics-Con-301 □ on [www.testkingpass.com] immediately to obtain a free download □ Real Analytics-Con-301 Exam Answers
- 100% Pass Quiz 2026 Salesforce Analytics-Con-301 Perfect Test Discount □ Search for ➡ Analytics-Con-301 □□□ and obtain a free download on 【 www.pdfvce.com 】 □ Analytics-Con-301 Valid Torrent
- Analytics-Con-301 Latest Braindumps Ppt □ Analytics-Con-301 Valid Exam Labs □ Analytics-Con-301 Valid Mock Exam □ Download ☀ Analytics-Con-301 □☀□ for free by simply entering ⇒ www.examcollectionpass.com ⇐ website □ Analytics-Con-301 Valid Exam Labs
- Analytics-Con-301 Free Exam □ Valid Analytics-Con-301 Test Simulator □ Valid Analytics-Con-301 Exam Pass4sure □ Search for ➡ Analytics-Con-301 □ and download exam materials for free through { www.pdfvce.com } □ Analytics-Con-301 Exam Actual Tests
- Analytics-Con-301 Reliable Braindumps Pdf □ Analytics-Con-301 Exam Actual Tests □ Analytics-Con-301 Test Dumps Free □ Download ☀ Analytics-Con-301 □☀□ for free by simply entering ▶ www.dumpsquestion.com ◀ website □ Analytics-Con-301 New Test Materials
- 2026 Newest Analytics-Con-301 Test Discount Help You Pass Analytics-Con-301 Easily □ { www.pdfvce.com } is best website to obtain { Analytics-Con-301 } for free download □ Valid Analytics-Con-301 Test Online
- Analytics-Con-301 Reliable Braindumps Pdf □ New Analytics-Con-301 Dumps Pdf □ Analytics-Con-301 Latest Braindumps Ppt □ Search for 「 Analytics-Con-301 」 and easily obtain a free download on 《 www.prepawaypdf.com 》 □ Analytics-Con-301 Reliable Braindumps Pdf
- 100% Pass Quiz 2026 Salesforce Analytics-Con-301 – High-quality Test Discount □ Immediately open “ www.pdfvce.com ” and search for ➡ Analytics-Con-301 □□□ to obtain a free download □ Analytics-Con-301 Formal Test
- Latest Analytics-Con-301 Exam Learning Materials, Analytics-Con-301 Training Dumps: Salesforce Certified Tableau Consultant - www.prepawaypdf.com □ Enter ☀ www.prepawaypdf.com □☀□ and search for > Analytics-Con-301 < to download for free □ Analytics-Con-301 Valid Torrent
- www.stes.tyc.edu.tw, www.stes.tyc.edu.tw, bbs.t-firefly.com, www.stes.tyc.edu.tw, www.stes.tyc.edu.tw, www.stes.tyc.edu.tw, www.stes.tyc.edu.tw, www.stes.tyc.edu.tw, Disposable vapes

BONUS!!! Download part of PDF4Test Analytics-Con-301 dumps for free: https://drive.google.com/open?id=1bPF_kakj34b0KE8dXvvpuGKq1jfroWzR