

# Cisco 300-620 PDF Questions - Pass Your Exam With Ease



Cisco  
300-620

Implementing Cisco Application Centric  
Infrastructure (300-620 DCACI)

## Questions & Answers

(Demo Version - Limited Content)

Thank you for Downloading 300-620 exam PDF Demo

Get Full File:

<https://www.certifiedumps.com/cisco/300-620-dumps.html>



2026 Latest Pass4Test 300-620 PDF Dumps and 300-620 Exam Engine Free Share: <https://drive.google.com/open?id=1OPUaugkU5CXBLw-kTbr0futMCN3cqnmr>

Our considerate service is not only reflected in the purchase process, but also reflected in the considerate after-sales assistance on our 300-620 exam questions. We will provide considerate after-sales service to every user who purchased our 300-620 practice materials. If you have any questions after you buy our 300-620 study guide, you can always get thoughtful support and help by email or online inquiry. If you need any support, and we are always here to help you.

To prepare for the 300-620 exam, candidates can take advantage of a wide range of study resources offered by Cisco, including training courses, practice exams, and online communities. Cisco also recommends that candidates have hands-on experience with ACI solutions and be familiar with related technologies such as virtualization, automation, and network security.

Cisco 300-620 exam, also known as Implementing Cisco Application Centric Infrastructure (DCACI), is a certification test that validates the knowledge and skills required to implement Cisco ACI technologies. 300-620 Exam is designed for IT professionals who want to demonstrate their expertise in data center networking and automation with Cisco ACI technologies. Implementing Cisco Application Centric Infrastructure certification exam measures the candidate's ability to configure, manage, and troubleshoot Cisco ACI environments, including network fabric, policies, virtualization, and security.

>> 300-620 Latest Exam Labs <<

## 300-620 New Braindumps Files, Authorized 300-620 Exam Dumps

If you don't have enough time to study for your certification exam, Pass4Test provides Implementing Cisco Application Centric Infrastructure 300-620 PDF Questions. You may quickly download Implementing Cisco Application Centric Infrastructure 300-620 exam questions in PDF format on your smartphone, tablet, or desktop. You can Print Cisco pdf questions and answers on paper and make them portable so you can study on your own time and carry them wherever you go.

### Cisco Implementing Cisco Application Centric Infrastructure Sample Questions (Q192-Q197):

#### NEW QUESTION # 192

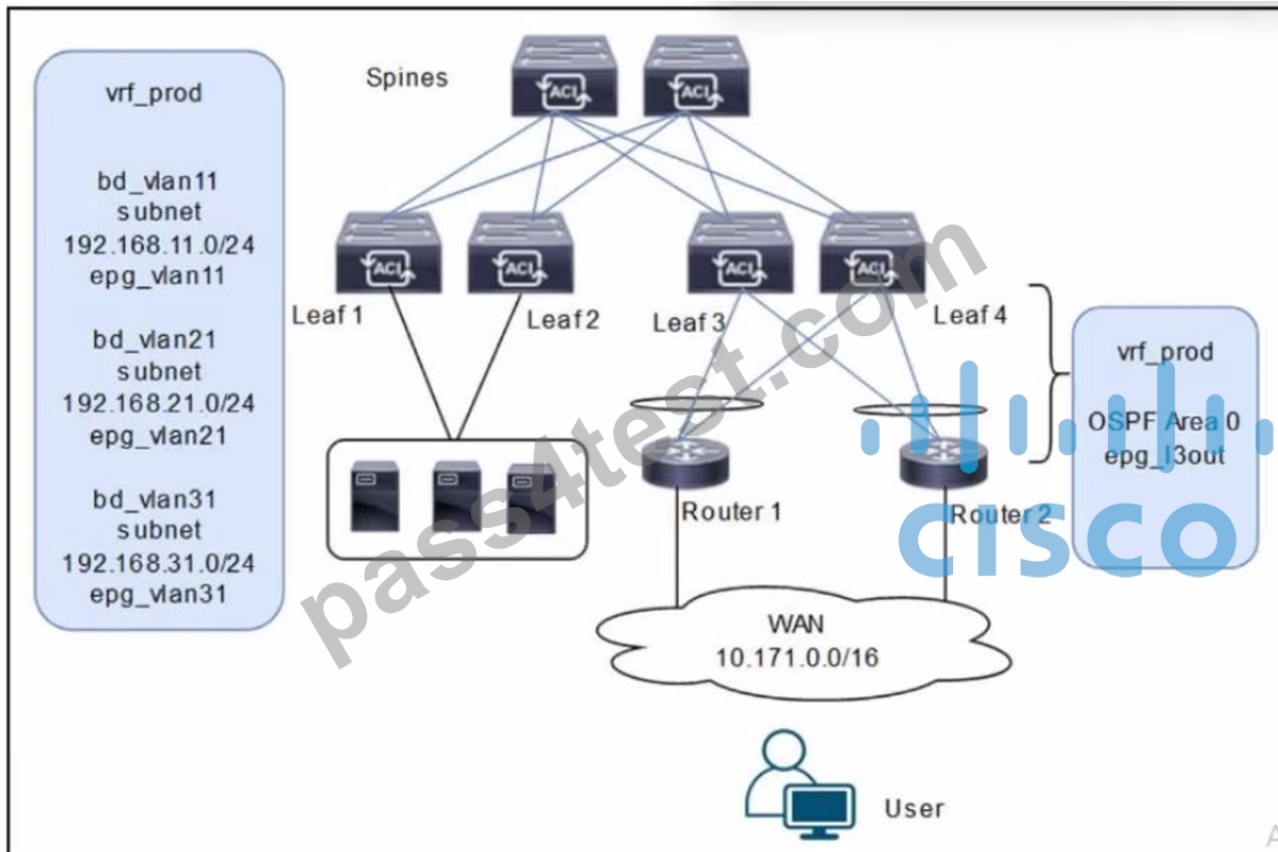
An engineer must configure a service graph for the policy-based redirect to redirect traffic to a transparent firewall. The policy must be vendor-agnostic to support any firewall appliance. Which two actions accomplish these goals? (Choose two.)

- A. Set Managed to True.
- B. Set the Service Type to Other.
- C. Set Promiscuous Mode to True.
- D. Set Function Type to L2.
- E. Set Context Aware to Single.

Answer: B,D

#### NEW QUESTION # 193

Refer to the exhibit.



A customer is deploying a WAN with these requirements: \*Routers 1 and 2 must receive only routes 192.168.11.0/24 and 192.168.21.0/24 from the Cisco ACI fabric \*Reachability to the WAN users must be permitted only for the servers that are located in vrf\_prod.

Which settings must be configured to meet these objectives?

- A. Configure the subnets 192.168.11.0/24 and 192.168.21.0/24 as Private to VRF. Configure the subnet 192.168.31.0/24 as Advertised Externally. Configure an EPG subnet 0.0.0.0/0 as Shared Route Control Subnet.
- B. Configure the subnets 192.168.11.0/24 and 192.168.21.0/24 as Private to VRF Configure the subnet 192.168.31.0/24

- as Advertised Externally. Configure an EPG subnet 0.0.0.0/0 as External Subnets for External EPG.
- C. Configure the subnets 192.168.11.0/24 and 192.168.21.0/24 as Advertised Externally. Configure the subnet 192.168.31.0/24 as Private to VRF. Configure an EPG subnet 0.0.0.0/0 as Shared Route Control Subnet.
  - D. Configure the subnets 192.168.11.0/24 and 192.168.21.0/24 as Advertised Externally. Configure the subnet 192.168.31.0/24 as Private to VRF. Configure an EPG subnet 0.0.0.0/0 as External Subnets for External EPG.

**Answer: D**

Explanation:

The scenario involves deploying a WAN with Cisco ACI, where Routers 1 and 2 (connected via an L3Out with OSPF Area 0) must receive specific routes (192.168.11.0/24 and 192.168.21.0/24) from the ACI fabric, and reachability to WAN users must be permitted only for servers in `vrf_prod`. The diagram shows three bridge domains (`bd_vlan11`, `bd_vlan21`, `bd_vlan31`) with their respective subnets and EPGs, all under `vrf_prod`, along with an L3Out (`epg_Bout`) for WAN connectivity.

Requirement Analysis

Routers 1 and 2 must receive only routes 192.168.11.0/24 and 192.168.21.0/24:

These subnets belong to `bd_vlan11` and `bd_vlan21`, respectively. To advertise these routes to Routers 1 and 2 via the L3Out, they must be marked with the appropriate scope in the bridge domain configuration.

In ACI, the "Advertised Externally" scope on a subnet ensures that it is advertised to external routers via the L3Out routing protocol (OSPF in this case).

Reachability to WAN users must be permitted only for servers in `vrf_prod`:

This implies that only the subnets in `vrf_prod` (192.168.11.0/24, 192.168.21.0/24, and 192.168.31.0/24) should be accessible, but WAN users should only reach specific subnets based on policy.

The external EPG (`epg_Bout`) represents the WAN users (10.171.0.0/16), and its subnet scope must control inbound reachability.

The subnet 192.168.31.0/24 (`bd_vlan31`) should not be advertised to the WAN, as it is not listed in the routes Routers 1 and 2 should receive.

Option Evaluation

A. Configure the subnets 192.168.11.0/24 and 192.168.21.0/24 as Private to VRF. Configure the subnet 192.168.31.0/24 as Advertised Externally. Configure an EPG subnet 0.0.0.0/0 as External Subnets for External EPG:

Setting 192.168.11.0/24 and 192.168.21.0/24 as "Private to VRF" means they are not advertised externally, which fails the requirement for Routers 1 and 2 to receive these routes.

Setting 192.168.31.0/24 as "Advertised Externally" incorrectly advertises this subnet to the WAN, which is not desired.

The "External Subnets for External EPG" scope on 0.0.0.0/0 allows WAN users to reach all subnets in `vrf_prod`, which is correct for reachability.

Conclusion: Fails the first requirement (route advertisement).

Reference:

B. Configure the subnets 192.168.11.0/24 and 192.168.21.0/24 as Private to VRF. Configure the subnet 192.168.31.0/24 as Advertised Externally. Configure an EPG subnet 0.0.0.0/0 as Shared Route Control Subnet:

Similar to Option A, setting 192.168.11.0/24 and 192.168.21.0/24 as "Private to VRF" prevents their advertisement to the WAN, failing the first requirement.

Setting 192.168.31.0/24 as "Advertised Externally" incorrectly advertises this subnet.

The "Shared Route Control Subnet" scope allows route leaking between VRFs, which is irrelevant here since there is only one VRF (`vrf_prod`) and no route leaking is required.

Conclusion: Fails both requirements (route advertisement and reachability control).

C. Configure the subnets 192.168.11.0/24 and 192.168.21.0/24 as Advertised Externally. Configure the subnet 192.168.31.0/24 as Private to VRF. Configure an EPG subnet 0.0.0.0/0 as Shared Route Control Subnet:

Setting 192.168.11.0/24 and 192.168.21.0/24 as "Advertised Externally" ensures these subnets are advertised to Routers 1 and 2 via OSPF, meeting the first requirement.

Setting 192.168.31.0/24 as "Private to VRF" prevents its advertisement to the WAN, which aligns with the requirement since only 192.168.11.0/24 and 192.168.21.0/24 should be advertised.

The "Shared Route Control Subnet" scope on 0.0.0.0/0 in the external EPG is incorrect for controlling reachability. This scope is used for route leaking, not for defining which subnets are accessible from the external EPG.

Conclusion: Meets the first requirement but fails the second (reachability control).

D. Configure the subnets 192.168.11.0/24 and 192.168.21.0/24 as Advertised Externally. Configure the subnet 192.168.31.0/24 as Private to VRF. Configure an EPG subnet 0.0.0.0/0 as External Subnets for External EPG:

Setting 192.168.11.0/24 and 192.168.21.0/24 as "Advertised Externally" ensures these subnets are advertised to Routers 1 and 2 via OSPF, meeting the first requirement.

Setting 192.168.31.0/24 as "Private to VRF" prevents its advertisement to the WAN, which is correct since only the specified subnets should be advertised.

The "External Subnets for External EPG" scope on 0.0.0.0/0 in the external EPG (`epg_Bout`) allows WAN users (10.171.0.0/16) to

reach all subnets in vrf\_prod, which includes 192.168.11.0/24, 192.168.21.0/24, and 192.168.31.0/24. This satisfies the second requirement, as servers in vrf\_prod are accessible, and contracts can further restrict access if needed (though not specified in the question).

Conclusion: Meets both requirements (route advertisement and reachability).

Final Answer Justification

D is correct because:

It ensures that only 192.168.11.0/24 and 192.168.21.0/24 are advertised to Routers 1 and 2 by setting their scope to "Advertised Externally." It keeps 192.168.31.0/24 private to vrf\_prod by setting its scope to "Private to VRF." It allows WAN users to reach all vrf\_prod subnets (including servers) by setting 0.0.0.0/0 as "External Subnets for External EPG," fulfilling the reachability requirement.

Primary Cisco Reference:

Cisco APIC Layer 3 Configuration Guide, "Configuring Subnets for L3Out." Cisco ACI Routing and Forwarding Guide, "External EPG and Subnet Scopes." Cisco ACI Best Practices, "Controlling Route Advertisement and Reachability."

#### NEW QUESTION # 194

An engineer must configure VMM domain integration on a Cisco UCS B-Series server that is connected to a Cisco ACI fabric. Drag and drop the products used to create VMM domain from the bottom into the sequence in which they should be implemented at the top. Products are used more than once.

On the  interface, create a dynamic VLAN pool.

On the  interface, create a VMware vCenter domain.

On the  interface, create a vCenter/vShield controller.

On the  user interface, verify that the VMware vDS is created.

APIC

vCenter

UCS Manager

Answer:

Explanation:

On the UCS Manager interface, create a dynamic VLAN pool.

On the vCenter interface, create a VMware vCenter domain.

On the vCenter interface, create a vCenter/vShield controller.

On the APIC user interface, verify that the VMware vDS is created.

APIC

vCenter

UCS Manager

#### NEW QUESTION # 195

Which protocol does ACI use to securely save the configuration in a remote location?

- A. FTP
- B. HTTPS
- **C. SCP**
- D. TFTP

Answer: C

Explanation:

Section: ACI Management

Explanation/Reference: [https://www.cisco.com/c/en/us/td/docs/switches/datacenter/aci/apic/sw/kb/b\\_KB\\_Using\\_Import\\_Export\\_to\\_Recover\\_Config\\_States.html](https://www.cisco.com/c/en/us/td/docs/switches/datacenter/aci/apic/sw/kb/b_KB_Using_Import_Export_to_Recover_Config_States.html)

### NEW QUESTION # 196

What represents the unique identifier of an ACI object?

- A. distinguished name
- B. universal resource identifier (URI)
- C. management information tree
- D. application programming interface

**Answer: A**

Explanation:

Section: ACI Management

Explanation/Reference: <https://www.slideshare.net/CiscoDevNet/introduction-to-aci-apis>

### NEW QUESTION # 197

.....

Due to professional acumen of expert's, our 300-620 guide quiz has achieved the highest level in proficiency's perspective. For your particular inclination, we have various versions of our 300-620 exam braindumps for you to choose:the PDF, the Software version and the APP online. Now take a look of their features and you can get realized of our 300-620 Training Materials better. And as long as you purchase our 300-620 study engine, you can enjoy free updates for one year long.

**300-620 New Braindumps Files:** <https://www.pass4test.com/300-620.html>

- Pass-Sure 300-620 Latest Exam Labs – Find Shortcut to Pass 300-620 Exam  Copy URL  [www.easy4engine.com](http://www.easy4engine.com)  open and search for  300-620  to download for free  Certificate 300-620 Exam
- Pass-Sure 300-620 Latest Exam Labs – Find Shortcut to Pass 300-620 Exam  Open website [ [www.pdfvce.com](http://www.pdfvce.com) ] and search for ( 300-620 ) for free download  300-620 Valid Test Sample
- TOP 300-620 Latest Exam Labs 100% Pass | Latest Implementing Cisco Application Centric Infrastructure New Braindumps Files Pass for sure   [www.pdfdumps.com](http://www.pdfdumps.com)  is best website to obtain  300-620  for free download   Exam 300-620 Reference
- 300-620 Valid Exam Review  New 300-620 Test Topics  300-620 Prepaway Dumps  Open { [www.pdfvce.com](http://www.pdfvce.com) } and search for  **【 300-620 】** to download exam materials for free  Latest 300-620 Demo
- 300-620 Valid Exam Review  New 300-620 Test Topics  Latest 300-620 Demo  Search on  [www.pass4test.com](http://www.pass4test.com)  for  300-620  to obtain exam materials for free download  300-620 Latest Exam Simulator
- Valid Implementing Cisco Application Centric Infrastructure test answers, valid 300-620 exam dumps  Search for [ 300-620 ] and obtain a free download on  [www.pdfvce.com](http://www.pdfvce.com)  300-620 Valid Exam Review
- TOP 300-620 Latest Exam Labs 100% Pass | Latest Implementing Cisco Application Centric Infrastructure New Braindumps Files Pass for sure  Open website  [www.testkingpass.com](http://www.testkingpass.com)  and search for { 300-620 } for free download  Prep 300-620 Guide
- Pass-Sure 300-620 Latest Exam Labs – Find Shortcut to Pass 300-620 Exam  Easily obtain free download of  300-620   by searching on  [www.pdfvce.com](http://www.pdfvce.com)   300-620 Training Material
- TOP 300-620 Latest Exam Labs 100% Pass | Latest Implementing Cisco Application Centric Infrastructure New Braindumps Files Pass for sure  Easily obtain  300-620  for free download through  [www.troytecdumps.com](http://www.troytecdumps.com)   Certificate 300-620 Exam
- Pass-Sure 300-620 Latest Exam Labs – Find Shortcut to Pass 300-620 Exam  Easily obtain free download of  300-620  by searching on  [www.pdfvce.com](http://www.pdfvce.com)   300-620 Prepaway Dumps
- 2026 300-620 Latest Exam Labs | High-quality 300-620 100% Free New Braindumps Files  Copy URL ( [www.verifiedumps.com](http://www.verifiedumps.com) ) open and search for  300-620  to download for free  300-620 Latest Exam Simulator
- [xyzbookmarks.com](http://xyzbookmarks.com), [sairazceb852922.verybigblog.com](http://sairazceb852922.verybigblog.com), [socialwoot.com](http://socialwoot.com), [agnesooth104354.onzeblog.com](http://agnesooth104354.onzeblog.com), [gsa-kids.com](http://gsa-kids.com), [socialevity.com](http://socialevity.com), [harleyfgla360813.westexwiki.com](http://harleyfgla360813.westexwiki.com), [socialmediatotal.com](http://socialmediatotal.com), [miriamvdydh000837.wizzardsblog.com](http://miriamvdydh000837.wizzardsblog.com), [abelfmcm490827.wikibyby.com](http://abelfmcm490827.wikibyby.com), Disposable vapes

BTW, DOWNLOAD part of Pass4Test 300-620 dumps from Cloud Storage: <https://drive.google.com/open?id=1OPUaugkU5CXBLw-kTbr0fitMCN3cqnm>