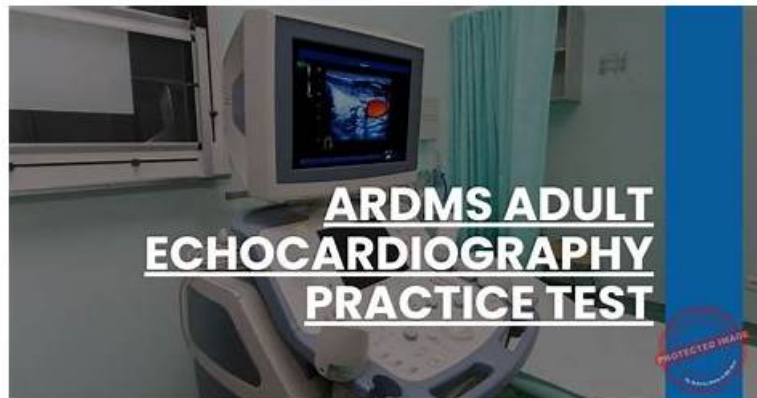


ARDMS AE-Adult-Echocardiography通過考試 & AE-Adult-Echocardiography測試



此外，這些KaoGuTi AE-Adult-Echocardiography考試題庫的部分內容現在是免費的：<https://drive.google.com/open?id=1gNWX4g6-Dq04fWxPFcQEPXFuMqW9Q4FM>

KaoGuTi是一個專門為一些IT認證考試提供針對性練習題及當前考試题目的培訓網站。我們針對熱門的ARDMS AE-Adult-Echocardiography 認證考試研究出來了最新的培訓方案，相信又可以滿足很多人的需求。ARDMS AE-Adult-Echocardiography 認證證書是很多知名IT企業錄用人的依據之一，所以這個認證考試現在很熱門。同時KaoGuTi也被很多人認可了，也很受一大部分人的信賴，也幫助了很多人成就了小小的夢想。如果你選擇KaoGuTi卻沒有成功通過考試，KaoGuTi會全額退款給你。

ARDMS AE-Adult-Echocardiography 考試大綱：

主題	簡介
主題 1	<ul style="list-style-type: none"> Instrumentation, Optimization, and Contrast: This section of the exam measures skills of adult echocardiography technicians related to use and optimization of ultrasound instrumentation and the application of contrast agents. Candidates should recognize imaging artifacts, utilize non-imaging transducers, and adjust ultrasound console settings for optimal imaging and Doppler recordings. Knowledge of harmonic imaging, principles of contrast agents, and the safe and effective use of saline and echo-enhancing contrast agents is essential. Candidates must also be able to optimize images when using contrast agents to ensure diagnostic quality.
主題 2	<ul style="list-style-type: none"> Anatomy and Physiology: This section of the exam measures skills of adult echocardiography technicians and covers knowledge and abilities related to normal cardiac anatomy and physiology. It includes assessing great vessels like the aorta and pulmonary arteries, recognizing anatomic variants of the heart, and evaluating cardiac chambers, pericardium, valve structures, and vessels of arterial and venous return. Candidates must document normal systolic and diastolic function, normal valve function and measurements, the phases of the cardiac cycle, normal Doppler changes with respiration, and appearance of arterial and venous waveforms. This also involves assessing the normal hemodynamic response to stress testing and maneuvers such as Valsalva, respiratory, handgrip, and postural changes.
主題 3	<ul style="list-style-type: none"> Pathology: This section of the exam measures skills of adult echocardiography technicians and focuses on identifying and evaluating abnormal physiology and perfusion and postoperative conditions. It includes assessment of ventricular aneurysms, aortic and valve abnormalities, arrhythmias, cardiac masses, diastolic dysfunction, endocarditis, ischemic diseases, cardiomyopathies, congenital anomalies, and postoperative valve repair or replacement and intracardiac devices. Candidates must demonstrate ability to recognize abnormal Doppler signals, EKG changes, wall motion abnormalities, and a wide range of cardiac pathologies including pulmonary hypertension and septal defects.

主題 4	<ul style="list-style-type: none"> • Measurement Techniques, Maneuvers, and Sonographic Views: This section of the exam measures skills of adult echocardiography technicians in performing accurate cardiac measurements, conducting provocative maneuvers, and obtaining optimized sonographic imaging views. It involves applying 2D, 3D, M-mode, and Doppler techniques to measure heart valves, chambers, and vessels, including the aortic valve, mitral valve, left and right ventricles, atria, pulmonary artery, and shunt ratios. Candidates must instruct patients in maneuvers such as Valsalva, cough, sniff, and squat. They should also be proficient in acquiring standard echocardiographic views including apical, parasternal, subcostal, and suprasternal notch views.
主題 5	<ul style="list-style-type: none"> • Clinical Care and Safety: This section of the exam measures skills of adult echocardiography technicians in applying clinical care principles and safety protocols. It includes evaluating patient history and external data, preparing patients including fasting state and intravenous line management, proper patient positioning, EKG lead placement, blood pressure measurement, and ergonomic techniques. Candidates are expected to identify critical echocardiographic findings, know contraindications for procedures, and be able to respond and manage medical emergencies that may arise during echocardiographic exams.

>> ARDMS AE-Adult-Echocardiography通過考試 <<

有用的AE-Adult-Echocardiography通過考試 |第一次嘗試輕鬆學習並通過考試，100%合格率的AE-Adult-Echocardiography: AE Adult Echocardiography Examination

眾所周知，AE-Adult-Echocardiography認證在IT認證中有很大的影響力，近年來，該認證已經成為許多成功IT公司的“進門”標準。想快速通過認證考試，可以選擇我們的ARDMS AE-Adult-Echocardiography考古題。選擇我們KaoGuIT網站，您不僅可以通過熱門的AE-Adult-Echocardiography考試，而且還可以享受我們提供的一年免費更新服務。擁有ARDMS AE-Adult-Echocardiography認證可以幫助在IT領域找工作的人獲得更好的就業機會，也將會為成功的IT事業做好鋪墊。

最新的 ARDMS RDCS AE-Adult-Echocardiography 免費考試真題 (Q44-Q49):

問題 #44

Which diagnosis is most likely confirmed by echocardiography in a 65-year-old female presenting with new onset chest pain associated with ST segment elevation on the electrocardiogram and angiographically normal coronary arteries?

- A. Restrictive cardiomyopathy
- B. Apical hypertrophic cardiomyopathy
- C. Takotsubo cardiomyopathy
- D. Alcohol-associated cardiomyopathy

答案：C

解題說明:

Takotsubo cardiomyopathy, also known as stress-induced cardiomyopathy or "broken heart syndrome," predominantly affects postmenopausal women (usually older than 50 years) and often presents with acute chest pain and ST-segment elevation on the ECG mimicking acute myocardial infarction. However, coronary angiography reveals normal or non-obstructive coronary arteries. Echocardiographically, Takotsubo cardiomyopathy is characterized by transient left ventricular systolic dysfunction with a typical pattern of apical ballooning and basal hyperkinesis. The wall motion abnormality extends beyond a single coronary artery territory, differentiating it from ischemic cardiomyopathy.

The diagnosis is supported by the clinical presentation, typical echocardiographic findings, and exclusion of obstructive coronary artery disease. The condition is usually reversible over days to weeks.

This is extensively described in the "Textbook of Clinical Echocardiography, 6e" (Chapter 8: Coronary Artery Disease and Takotsubo Syndrome), which highlights the typical patient demographics, presentation, echocardiographic features, and prognosis .

問題 #45

Which phase of the cardiac cycle is indicated by the arrow on this image?

□

- A. Systolic ejection
- B. Isovolumic contraction
- C. Isovolumic relaxation
- D. Early diastole

答案： A

解題說明：

Comprehensive and Detailed Explanation From Exact Extract:

The Doppler waveform shows a typical left ventricular outflow tract or aortic valve velocity pattern. The arrow points to the steep rise and peak velocity of the jet, which corresponds to systolic ejection - the phase of the cardiac cycle when blood is rapidly ejected from the left ventricle into the aorta.

Isovolumic contraction precedes ejection and is represented by a flat baseline with no flow as ventricles build pressure. Isovolumic relaxation occurs after ejection before the mitral valve opens. Early diastole corresponds to mitral inflow, not aortic outflow.

This timing and flow pattern are standard in echocardiographic Doppler interpretation as described in the "Textbook of Clinical Echocardiography" and ASE Doppler imaging guidelines#16:Textbook of Clinical Echocardiography, 6ep.100-105##12:ASE Doppler Guidelinesp.50-55#.

問題 #46

Which wall is indicated by the arrow on this image?

- A. Inferolateral
- B. Inferior
- C. Anterior
- D. Anterolateral

答案： B

解題說明：

The echocardiographic image is a parasternal long axis or apical view showing the left ventricle. The arrow points to the wall segment located inferiorly, corresponding to the inferior wall of the left ventricle. The inferior wall is typically visualized in parasternal long axis and apical views as the posterior aspect of the ventricle.

Other options correspond to different walls: anterior is anterior septal wall, anterolateral and inferolateral refer to the lateral wall regions. Accurate wall identification is critical for regional wall motion analysis and coronary artery territory correlation.

This segmental wall identification is detailed in adult echocardiography and ASE chamber quantification guidelines#12:ASE Chamber Quantification Guidelinesp.90-95##16:Textbook of Clinical Echocardiography, 6ep.140-145#.

問題 #47

Which murmur will occur in a patient with a ruptured papillary muscle?

- A. Ejection systolic
- B. Late systolic
- C. Early systolic
- D. Holsystolic

答案： D

解題說明：

Rupture of a papillary muscle leads to acute mitral regurgitation, producing a holosystolic murmur heard throughout systole. This murmur results from backward flow of blood from the left ventricle to the left atrium during systole.

Ejection systolic murmurs are typically due to outflow obstruction like aortic stenosis. Early or late systolic murmurs occur in specific valve lesions but not with papillary muscle rupture.

This is covered in the "Textbook of Clinical Echocardiography, 6e", Chapter on Mitral Valve Disease and Mechanical Complications of Myocardial Infarction#20:430-435Textbook of Clinical Echocardiography#.

問題 #48

Based on this video, what is the estimated right atrial pressure in millimeters of mercury (mmHg)?

- A. 0
- B. 1
- C. 2
- D. 3

答案： A

解題說明：

Comprehensive and Detailed Explanation From Exact Extract:

The video shows a subcostal IVC view with measurement of IVC diameter and respiratory collapsibility. The IVC appears dilated (>2.1 cm) with less than 50% collapse on inspiration, suggesting elevated right atrial pressure (RAP).

According to ASE guidelines for noninvasive RAP estimation, an IVC diameter >2.1 cm with <50% collapsibility corresponds to an RAP of approximately 10 mmHg.

Lower RAP values correspond to smaller IVC and greater collapsibility. This is a standard measurement in adult echocardiography practice and ASE chamber quantification guidelines#12:ASE Chamber Quantification Guidelinesp.80-85##16:Textbook of Clinical Echocardiography, 6ep.115-120#.

問題 #49

.....

作為IT業界的頂級公司，ARDMS 通過其認證確定了產品專家的標準，可以說 ARDMS 在業界的聲望和 ARDMS 產品的市場佔有率提升了其認證工程師的含金量，一個 ARDMS 認證工程師獲取在優秀企業工作的機會比普通工程師大60%—80%，平均薪水高出30%-50%。世界500強企業中，有超過2/3的企業選擇了ARDMS電子商務軟體產品作為其核心的運用。因此，獲得AE-Adult-Echocardiography的證照，即使在強手林立的競爭環境中，你同樣能夠脫穎而出。

AE-Adult-Echocardiography測試: https://www.kaoguti.com/AE-Adult-Echocardiography_exam-pdf.html

- 高效的ARDMS AE-Adult-Echocardiography通過考試是行業領先材料&最佳的AE-Adult-Echocardiography: AE Adult Echocardiography Examination □ 打開 □ tw.fast2test.com □ 搜尋 ➡ AE-Adult-Echocardiography □ 以免費下載考試資料AE-Adult-Echocardiography考題免費下載
- AE-Adult-Echocardiography資訊 □ AE-Adult-Echocardiography認證指南 ▶ AE-Adult-Echocardiography試題 □ 在「www.newdumpspdf.com」網站上免費搜索 ✓ AE-Adult-Echocardiography □ ✓ □ 題庫AE-Adult-Echocardiography認證題庫
- 真實AE-Adult-Echocardiography通過考試 - 在www.kaoguti.com中獲得最好的 □ (www.kaoguti.com) 最新「AE-Adult-Echocardiography」問題集合AE-Adult-Echocardiography證照資訊
- AE-Adult-Echocardiography資訊 □ AE-Adult-Echocardiography考試指南 □ AE-Adult-Echocardiography真題 □ 在 ☀ www.newdumpspdf.com □ ☀ □ 上搜索 ➡ AE-Adult-Echocardiography □ □ □ 並獲取免費下載AE-Adult-Echocardiography PDF題庫
- AE-Adult-Echocardiography熱門認證 □ AE-Adult-Echocardiography真題 □ AE-Adult-Echocardiography證照 □ 在▷ www.newdumpspdf.com ◁ 網站上免費搜索 { AE-Adult-Echocardiography } 題庫AE-Adult-Echocardiography資訊
- 最新AE-Adult-Echocardiography試題 □ AE-Adult-Echocardiography熱門認證 □ AE-Adult-Echocardiography認證題庫 □ 到☀ www.newdumpspdf.com □ ☀ □ 搜索 □ AE-Adult-Echocardiography □ 輕鬆取得免費下載最新AE-Adult-Echocardiography試題
- AE-Adult-Echocardiography認證指南 □ 最新AE-Adult-Echocardiography考題 □ 最新AE-Adult-Echocardiography考題 □ 打開“www.newdumpspdf.com”搜尋 ➡ AE-Adult-Echocardiography □ 以免費下載考試資料最新AE-Adult-Echocardiography試題
- AE-Adult-Echocardiography真題 □ AE-Adult-Echocardiography題庫資料 □ AE-Adult-Echocardiography題庫資料 □ 在 □ www.newdumpspdf.com □ 上搜索 《 AE-Adult-Echocardiography 》 並獲取免費下載最新AE-Adult-Echocardiography考題
- 100%通過AE-Adult-Echocardiography通過考試考試 - 最好的ARDMS AE-Adult-Echocardiography測試 □ 「tw.fast2test.com」網站搜索 { AE-Adult-Echocardiography } 並免費下載AE-Adult-Echocardiography資訊
- 免費PDF AE-Adult-Echocardiography通過考試 - ARDMS AE-Adult-Echocardiography通過了考試 ☺ 透過⇒ www.newdumpspdf.com ⇐ 搜索 ▶ AE-Adult-Echocardiography ◀ 免費下載考試資料AE-Adult-Echocardiography考題套裝
- AE-Adult-Echocardiography試題 □ AE-Adult-Echocardiography認證指南 □ 最新AE-Adult-Echocardiography考題 □ 立即打開☀ tw.fast2test.com □ ☀ □ 並搜索☀ AE-Adult-Echocardiography □ ☀ □ 以獲取免費下載AE-Adult-Echocardiography證照資訊
- karimefni291615.iamthewiki.com, shaniazhpr768243.blog-ezine.com, bookmarkindexing.com, hanzahywh852992.wikirecognition.com, teganiiail20858.bcbloggers.com, joanmgtq130451.anchor-blog.com

margiecsuw081504.wikinewspaper.com, bookmarksoflife.com, ronaldirzf041319.wikinarration.com, www.stes.tyc.edu.tw,
Disposable vapes

順便提一下，可以從雲存儲中下載KaoGuTi AE-Adult-Echocardiography考試題庫的完整版：<https://drive.google.com/open?id=1gNWX4g6-Dq04fWxPFcQEPXFuMqW9Q4FM>