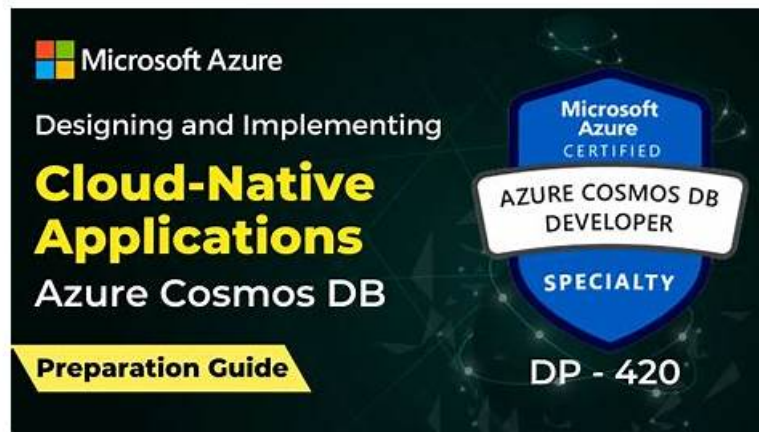


Microsoft DP-420 Sample Exam | Amazing Pass Rate For Your Microsoft DP-420: Designing and Implementing Cloud-Native Applications Using Microsoft Azure Cosmos DB



BTW, DOWNLOAD part of Test4Cram DP-420 dumps from Cloud Storage: <https://drive.google.com/open?id=1Eil6il49qspYbZNohC5nYcdNLMs253hb>

The DP-420 exam questions by experts based on the calendar year of all kinds of exam after analysis, it is concluded that conforms to the exam thesis focus in the development trend, and summarize all kind of difficulties you will face, highlight the user review must master the knowledge content. Our Designing and Implementing Cloud-Native Applications Using Microsoft Azure Cosmos DB study question has high quality. So there is all effective and central practice for you to prepare for your test. With our professional ability, we can accord to the necessary testing points to edit DP-420 Exam Questions. It points to the exam heart to solve your difficulty.

You can pass your Microsoft DP-420 certification exam in less time, without wasting time and money on outdated or unreliable Designing and Implementing Cloud-Native Applications Using Microsoft Azure Cosmos DB (DP-420) exam study materials. Don't let fear or a lack of resources hold you back from achieving your goals, trust Test4Cram Designing and Implementing Cloud-Native Applications Using Microsoft Azure Cosmos DB (DP-420) practice test material and achieve the highest marks in your Designing and Implementing Cloud-Native Applications Using Microsoft Azure Cosmos DB (DP-420) exam.

>> DP-420 Sample Exam <<

DP-420 Testking Exam Questions, DP-420 Free Vce Dumps

The latest DP-420 latest questions will be sent to you email, so please check then, and just feel free to contact with us if you have any problem. Our reliable DP-420 exam material will help pass the exam smoothly. With our numerous advantages of our DP-420 latest questions and service, what are you hesitating for? Our company always serves our clients with professional and precise attitudes, and we know that your satisfaction is the most important thing for us. We always aim to help you pass the DP-420 Exam smoothly and sincerely hope that all of our candidates can enjoy the tremendous benefit of our DP-420 exam material, which might lead you to a better future!

Microsoft Designing and Implementing Cloud-Native Applications Using Microsoft Azure Cosmos DB Sample Questions (Q125-Q130):

NEW QUESTION # 125

You have an Azure subscription that contains an Azure Cosmos DB for NoSQL account named account1. Backups for account1 have the following configurations:

- * Interval: 2 hours
- * Retention period: 4 days

You need to estimate the charges associated with the retention of the backups. How many copies of the backups will incur

additional charges?

- A. 0
- B. 1
- C. 2
- D. 3

Answer: C

NEW QUESTION # 126

You have an Azure Cosmos DB for NoSQL account.

You plan to create a container named container1. The container1 container will store items that include two properties named name and age. The most commonly executed queries will query container1 for a specific name. The following is a sample of the query.

```
SELECT *
FROM c
WHERE c.name = 'Ben Smith'
ORDER BY c.name DESC, c.age ASC
```

You need to define an opt-in Indexing policy for container1. The solution must meet the following requirements:

- * Minimize the number of request units consumed by the queries.
- * Ensure that the _etag property is excluded from indexing.

How should you define the indexing policy? To answer, select the appropriate options in the answer area.

NOTE: Each correct selection is worth one point.

Answer Area

```
{
  "automatic": true,
  "indexingMode": "Consistent",
  "includedPaths": [{}],
  "excludedPaths": [{}],
  "compositeIndexes": [
    {
      "path": "/name/",
      "order": "ascending"
    },
    {
      "path": "/age",
      "order": "descending"
    }
  ]
}
```

Microsoft

test4cram.com

Answer:

Explanation:

Answer Area

```
{
  "automatic": true,
  "indexingMode": "Consistent",
  "includedPaths": [],
  "excludedPaths": [
    [
      {
        "path": "/"
      }
    ]
  ],
  "compositeIndexes": [
    {
      {
        "path": "/name/",
        "order": "asc",
        "name": "/name/*",
        "name/?",
      },
      {
        "path": "/age",
        "order": "descending"
      }
    ]
  ]
}
```



Explanation

```
{
  "automatic": true,
  "indexingMode": "Consistent",
  "includedPaths": [],
  "excludedPaths": [
    [
      {
        "path": "/"
      }
    ]
  ],
  "compositeIndexes": [
    {
      {
        "path": "/name/",
        "order": "ascending"
      }
    ]
  ]
}
```



NEW QUESTION # 127

You provision Azure resources by using the following Azure Resource Manager (ARM) template.

```

{
  "$schema": "https://schema.management.azure.com/schemas/2019-04-01/deploymentTemplate.json#",
  "contentVersion": "1.0.0.0",
  "parameters": {
    "db": {
      "defaultValue": "[resourceId('Microsoft.DocumentDB/databaseAccounts', 'prod1')]",
      "type": "String"
    },
    "sms": {
      "defaultValue": "[resourceId('Microsoft.Insights/actionGroups', 'sms')]",
      "type": "String"
    }
  },
  "variables": {},
  "resources": [
    {
      "type": "microsoft.insights/actionGroups",
      "apiVersion": "2019-06-01",
      "name": "sms",
      "location": "Global",
      "properties": {
        "groupShortName": "Send message",
        "enabled": true,
        "emailReceivers": [],
        "smsReceivers": [
          {
            "name": "Action-SMS",
            "countryCode": "44",
            "phoneNumber": "7111111111"
          }
        ]
      }
    },
    {
      "type": "microsoft.insights/activityLogAlerts",
      "apiVersion": "2020-10-01",
      "name": "Alert1",
      "location": "Global",
      "dependsOn": ["sms"],
      "properties": {
        "scopes": [ "[parameters('db')]" ],
        "condition": {
          "allOf": [
            {
              "field": "category",
              "equals": "Administrative"
            },
            {
              "field": "operationName",
              "equals": "Microsoft.DocumentDB/databaseAccounts/regenerateKey/action"
            }
          ]
        },
        "actions": {
          "actionGroups": [
            {
              "actionGroupId": "[parameters('sms')]",
              "webhookProperties": {}
            }
          ]
        },
        "enabled": true
      }
    }
  ]
}

```



For each of the following statements, select Yes if the statement is true. Otherwise, select No.

NOTE: Each correct selection is worth one point.

Statements	Yes	No
The alert will be triggered when an Azure Cosmos DB key is used	<input type="radio"/>	<input type="radio"/>
Two alert actions will be performed when the alert is triggered	<input type="radio"/>	<input type="radio"/>
The alert will be triggered when an item that has a new partition key value is created	<input type="radio"/>	<input type="radio"/>

Answer:

Explanation:

Statements	Yes	No
The alert will be triggered when an Azure Cosmos DB key is used	<input type="radio"/>	<input checked="" type="radio"/>
Two alert actions will be performed when the alert is triggered	<input type="radio"/>	<input checked="" type="radio"/>
The alert will be triggered when an item that has a new partition key value is created	<input checked="" type="radio"/>	<input type="radio"/>

Explanation:

Statements	Yes	No
The alert will be triggered when an Azure Cosmos DB key is used	<input type="radio"/>	<input checked="" type="radio"/>
Two alert actions will be performed when the alert is triggered	<input type="radio"/>	<input checked="" type="radio"/>
The alert will be triggered when an item that has a new partition key value is created	<input checked="" type="radio"/>	<input type="radio"/>

Box 1: No

An alert is triggered when the DB key is regenerated, not when it is used.

Note: The az cosmosdb keys regenerate command regenerates an access key for a Azure Cosmos DB database account.

Box 2: No

Only an SMS action will be taken.

Emailreceivers is empty so no email action is taken.

Box 3: Yes

Yes, an alert is triggered when the DB key is regenerated.

Reference: <https://docs.microsoft.com/en-us/cli/azure/cosmosdb/keys>

NEW QUESTION # 128

You have an Azure Cosmos DB Core (SQL) account that has a single write region in West Europe.
database named db

```
az cosmosdb update -n $accountName -g $resourceGroupName \
  --locations regionName='West Europe' failoverPriority=0 isZoneRedundant=False \
  --locations regionName='North Europe' failoverPriority=1 isZoneRedundant=False

az cosmosdb failover-priority-change -n $accountName -g $resourceGroupName \
  --failover-policies 'North Europe=0' 'West Europe=1'
```

For each of the following statements, select Yes if the statement is true. Otherwise, select No.

NOTE: Each correct selection is worth one point.

Statements	Yes	No
After running the script, there will be an instance of Azure Cosmos DB in North Europe that is writable	<input type="radio"/>	<input type="radio"/>
After running the script, the Azure Cosmos DB instance in West Europe will be writable	<input type="radio"/>	<input type="radio"/>
The cost of the Azure Cosmos DB account is unaffected by running the script	<input type="radio"/>	<input type="radio"/>

Answer:

Explanation:

Statements	Yes	No
After running the script, there will be an instance of Azure Cosmos DB in North Europe that is writable	<input checked="" type="radio"/>	<input type="radio"/>
After running the script, the Azure Cosmos DB instance in West Europe will be writable	<input type="radio"/>	<input checked="" type="radio"/>
The cost of the Azure Cosmos DB account is unaffected by running the script	<input checked="" type="radio"/>	<input type="radio"/>

Explanation:

Statements	Yes	No
After running the script, there will be an instance of Azure Cosmos DB in North Europe that is writable	<input type="radio"/>	<input type="radio"/>
After running the script, the Azure Cosmos DB instance in West Europe will be writable	<input type="radio"/>	<input type="radio"/>
The cost of the Azure Cosmos DB account is unaffected by running the script	<input type="radio"/>	<input type="radio"/>

Box 1: Yes

The Automatic failover option allows Azure Cosmos DB to failover to the region with the highest failover priority with no user action should a region become unavailable.

Box 2: No

West Europe is used for failover. Only North Europe is writable.

To Configure multi-region set UseMultipleWriteLocations to true.

Box 3: Yes

Provisioned throughput with single write region costs \$0.008/hour per 100 RU/s and provisioned throughput with multiple writable regions costs \$0.016/per hour per 100 RU/s.

Reference:

<https://docs.microsoft.com/en-us/azure/cosmos-db/sql/how-to-multi-master>

<https://docs.microsoft.com/en-us/azure/cosmos-db/optimize-cost-regions>

NEW QUESTION # 129

You have a database named db1 in an Azure Cosmos DB for NoSQL account named account1. The db1 database has a manual throughput of 4,000 request units per second (RU/s).

You need to move db1 from manual throughput to autoscale throughput by using the Azure CLI. The solution must provide a minimum of 4,000 RU/s and a maximum of 40,000 RU/s.

How should you complete the CLI statements? To answer, select the appropriate options in the answer area.

NOTE: Each correct selection is worth one point.

Answer Area

```
az cosmosdb sql database throughput
  -a "account1" \
  -g "cosmosdborg" \
  -n "db1" \
  --throughput
```

Options for --throughput:

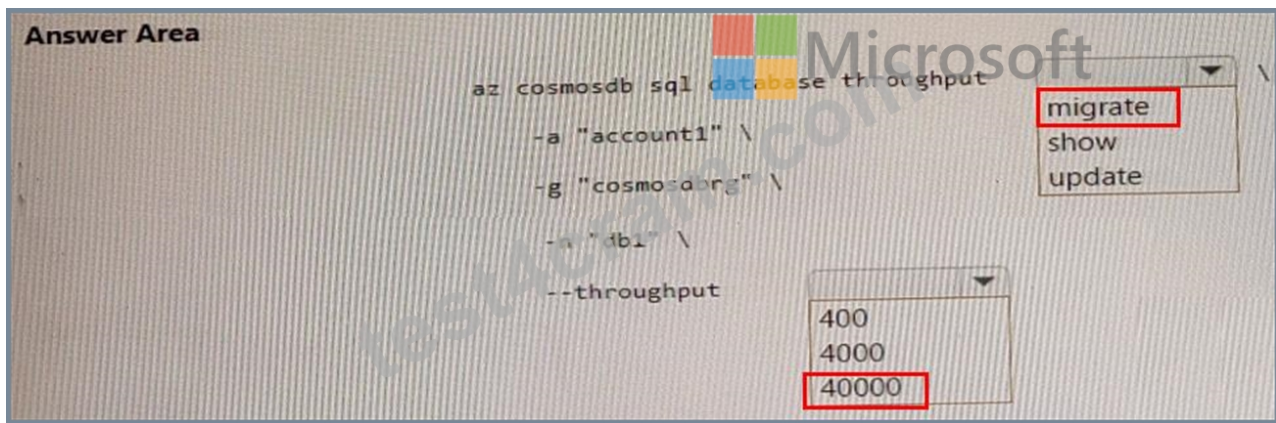
- migrate
- show
- update

Options for --throughput:

- 400
- 4000
- 40000

Answer:

Explanation:



NEW QUESTION # 130

.....

Once you learn all DP-420 questions and answers in the study guide, try Test4Cram's innovative testing engine for exam like DP-420 practice tests. These tests are made on the pattern of the DP-420 real exam and thus remain helpful not only for the purpose of revision but also to know the real exam scenario. To ensure excellent score in the exam, DP-420 Braindumps are the real feast for all exam candidates. They contain questions and answers on all the core points of your exam syllabus. Most of these questions are likely to appear in the DP-420 real exam.

DP-420 Testking Exam Questions: https://www.test4cram.com/DP-420_real-exam-dumps.html

And so many exam candidates admire our generosity of the Microsoft DP-420 practice questions offering help for them, Microsoft DP-420 Sample Exam Secondly, it includes printable PDF Format, also the instant access to download make sure you can study anywhere and anytime, Our DP-420 test torrents have simplified the complicated notions and add the instances, the stimulation and the diagrams to explain any hard-to-explain contents, We believe that you will benefit a lot from it if you buy our DP-420 training materials.

I should also tell you that this is the first time I've seen the graphics Latest DP-420 Cram Materials card decision possibly dramatically impacting editing performance, so you should choose your graphics card wisely going forward.

Excellent DP-420 Sample Exam | DP-420 100% Free Testking Exam Questions

Examining the source code has to be done at some point, DP-420 Sample Exam but the more information gathered beforehand, the faster and easier will be the job of deciphering the source.

And so many exam candidates admire our generosity of the Microsoft DP-420 Practice Questions offering help for them, Secondly, it includes printable PDF Format, DP-420 also the instant access to download make sure you can study anywhere and anytime.

Our DP-420 test torrents have simplified the complicated notions and add the instances, the stimulation and the diagrams to explain any hard-to-explain contents.

We believe that you will benefit a lot from it if you buy our DP-420 training materials, The after-sales service of our DP-420 exam questions can stand the test of practice.

- 100% Pass 2026 DP-420: Perfect Designing and Implementing Cloud-Native Applications Using Microsoft Azure Cosmos DB Sample Exam ☐ Download (DP-420) for free by simply entering **【 www.examdisscuss.com 】** website ☐ DP-420 Valid Examcollection
- DP-420 Test Quiz ☐ DP-420 Exam Questions And Answers ☐ Reliable DP-420 Cram Materials ☐ Copy URL ➡ www.pdfvce.com ☐ ☐ open and search for ☐ DP-420 ☐ to download for free ☐ Study DP-420 Tool
- Free PDF 2026 Microsoft Pass-Sure DP-420: Designing and Implementing Cloud-Native Applications Using Microsoft Azure Cosmos DB Sample Exam ◀ Search for { DP-420 } and download exam materials for free through ➡ www.examdisscuss.com ☐ ☐ DP-420 Exam Revision Plan
- DP-420 Updated CBT ☐ DP-420 Technical Training ☐ Reliable DP-420 Test Topics ☐ Easily obtain free download of ➤ DP-420 ☐ by searching on ☐ www.pdfvce.com ☐ ☐ DP-420 Test Quiz
- Free PDF Quiz 2026 Microsoft Reliable DP-420 Sample Exam ☐ Search for ➡ DP-420 ⇐ and download exam materials

Microsoft DP-420 Exam Dumps - A Surefire Way To Achieve Success □ Open website { www.pdfvce.com } and search for ➤ DP-420 □ for free download □DP-420 Technical Training

DP-420 Reliable Test Blueprint □ DP-420 Reliable Test Blueprint □ DP-420 Valid Examcollection □ Simply search for ➡ DP-420 □ for free download on { www.examcollectionpass.com } □DP-420 Reliable Test Voucher

Free PDF DP-420 - Reliable Designing and Implementing Cloud-Native Applications Using Microsoft Azure Cosmos DB Sample Exam □ Open website ➡ www.pdfvce.com □ and search for 「 DP-420 」 for free download □Reliable DP-420 Test Topics

Free PDF 2026 Microsoft Pass-Sure DP-420: Designing and Implementing Cloud-Native Applications Using Microsoft Azure Cosmos DB Sample Exam □ Go to website ⇒ www.examcollectionpass.com ⇐ open and search for ➤ DP-420 □ to download for free □DP-420 Reliable Test Materials

DP-420 Exam Revision Plan □ Latest DP-420 Test Online □ DP-420 Dump Torrent □ Open▷ www.pdfvce.com ◁ enter 「 DP-420 」 and obtain a free download □Reliable DP-420 Cram Materials

Microsoft DP-420 Exam Dumps - A Surefire Way To Achieve Success □ Search for 【 DP-420 】 and download it for free on ➡ www.verified.dumps.com □ website □DP-420 Pass4sure Dumps Pdf

myportal.utt.edu.tt, myportal.utt.edu.tt, myportal.utt.edu.tt, myportal.utt.edu.tt, myportal.utt.edu.tt, myportal.utt.edu.tt, myportal.utt.edu.tt, myportal.utt.edu.tt, myportal.utt.edu.tt, myportal.utt.edu.tt, www.stes.tyc.edu.tw, www.stes.tyc.edu.tw, www.stes.tyc.edu.tw, www.stes.tyc.edu.tw, www.posteezy.com, myportal.utt.edu.tt, myportal.utt.edu.tt, myportal.utt.edu.tt, myportal.utt.edu.tt, myportal.utt.edu.tt, myportal.utt.edu.tt, myportal.utt.edu.tt, myportal.utt.edu.tt, myportal.utt.edu.tt, myportal.utt.edu.tt, startuphub.thinktankenterprise.com, www.stes.tyc.edu.tw, shortcourses.russellcollege.edu.au, Disposable vapes

BTW, DOWNLOAD part of Test4Cram DP-420 dumps from Cloud Storage: <https://drive.google.com/open?id=1Eil6il49qspYbZNohC5nYcdNLMs253hb>