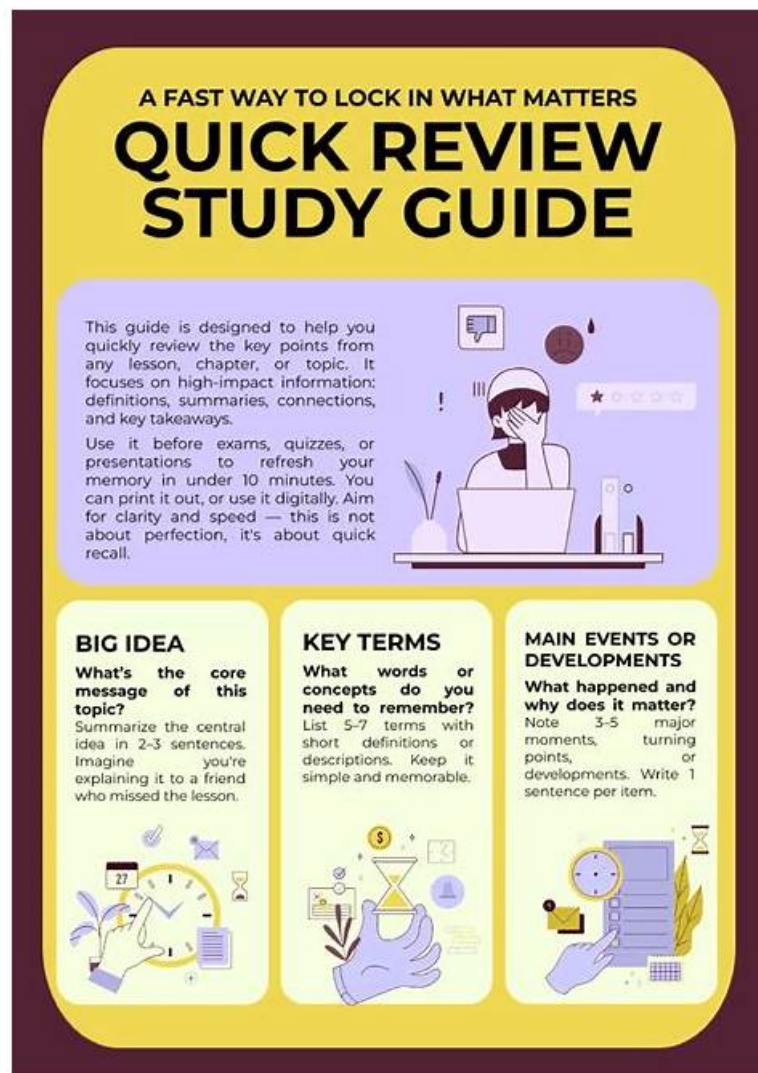


Plat-Dev-210 Study Materials Review & Plat-Dev-210 Latest Braindumps Sheet



The Salesforce Plat-Dev-210 practice exam software also has a feature to track all of the scores you earned this whole time. If your scores don't seem to be satisfying, we encourage you to repeat the learning process and then take another session of Salesforce Plat-Dev-210 practice exam questions simulation. As explained before, the Plat-Dev-210 practice Q&A comes in two different formats. The installable one is installable on any Windows computer without requiring an internet connection. Salesforce Plat-Dev-210 Practice exam software allows you to take the tests multiple times without any recurring questions. At the end of every Plat-Dev-210 Practice Test, you will see your score on the screen. Whenever there is a change in the Salesforce Plat-Dev-210 exam syllabus our subject matter experts updates the Salesforce exam questions according to it. The sooner you start preparing, the higher your chance to excel on your Salesforce Certified Omnistudio Developer Plat-Dev-210 exam. Don't gamble your future. Get a grab on the Salesforce Plat-Dev-210 braindumps questions for the Salesforce Certified Omnistudio Developer exam to boost your career!.

Salesforce Plat-Dev-210 Exam Syllabus Topics:

Topic	Details

Topic 1	<ul style="list-style-type: none"> • Flexcards: This section of the exam measures the skills of a Solution Architect and covers the ability to design and configure FlexCards based on specific business requirements. It evaluates the candidate's knowledge in selecting appropriate card styles, defining data sources and fields, and implementing user actions across different card states. Additionally, this domain tests the understanding of constructing the underlying JSON data structure that powers the FlexCards framework, ensuring that the configured cards meet both functional and technical specifications.
Topic 2	<ul style="list-style-type: none"> • Omnistudio Data Mappers: This part of the exam measures the skills of a Data Engineer and focuses on the use of Omnistudio Data Mappers for extracting, transforming, and loading data. It includes identifying the appropriate Data Mapper for a given requirement, as well as determining the necessary Extract, Load, Transform, and Turbo Extract functionalities based on specific use cases. This section ensures the candidate can effectively map and manipulate data to support business processes.
Topic 3	<ul style="list-style-type: none"> • Omniscripts: This portion of the exam measures the skills of a Business Analyst and focuses on the use of OmniScripts to create dynamic, guided user experiences. It includes comparing and contrasting various OmniScript elements and their configurations to fulfill given use cases. The section also examines the candidate's understanding of the JSON structure that supports OmniScripts, as well as the ability to select appropriate elements and properties to address functional requirements effectively.
Topic 4	<ul style="list-style-type: none"> • Integrated Troubleshooting and Deployment: This final section measures the skills of a Support Engineer and focuses on identifying and resolving issues within Omnistudio tools. It involves diagnosing errors based on given scenarios and determining where breakdowns occur in the data flow for specific customer issues. This ensures the candidate can effectively troubleshoot, debug, and maintain solutions to ensure optimal performance and reliability.
Topic 5	<ul style="list-style-type: none"> • Integration Procedures: This section measures the skills of an Integration Architect and involves designing and configuring Integration Procedures to automate processes and integrate systems. It requires comparing and contrasting different elements and configurations within Integration Procedures to meet specific use cases. Candidates are also tested on selecting the correct elements and properties to satisfy functional requirements, ensuring seamless data flow and process automation.

>> Plat-Dev-210 Study Materials Review <<

Free PDF Quiz Salesforce - High Pass-Rate Plat-Dev-210 - Salesforce Certified Omnistudio Developer Study Materials Review

To fit in this amazing and highly accepted exam, you must prepare for it with high-rank practice materials like our Plat-Dev-210 study materials. Our Plat-Dev-210 exam questions are the Best choice in terms of time and money. If you are a beginner, start with the learning guide of Plat-Dev-210 Practice Engine and our products will correct your learning problems with the help of the Plat-Dev-210 training braindumps.

Salesforce Certified Omnistudio Developer Sample Questions (Q19-Q24):

NEW QUESTION # 19

A developer is troubleshooting an Integration Procedure with two elements: A Remote Action named FetchCart and a Response Action named ResponseCart.

In Preview, what JSON node shows the data sent to the Response Action?

- A. ResponseCart
- B. Response
- C. FetchCart
- D. ResponseCartDebug

Answer: A

Explanation:

In Preview, the JSON node that shows the data sent to the Response Action is the name of the Response Action itself. In this case, it is ResponseCart. The other nodes show either the input data or the output data of the Integration Procedure.

NEW QUESTION # 20

A developer needs to retrieve data from an external system that stores policy data. The external system supports REST APIs to access and update the policies. Due to the volume of the policy data and peak hours of hours of business, calls to the REST APIs sometimes take longer than expected to response.

The developer creates an Integration Procedure to retrieve the policy data for use in an OmniScript.

Given the external system's known performance issues, which configuration should be used to implement the call to the external system?

Choose 2 answers

- A. Configure a Remote action with timeout settings of 120000
- B. Set the Timeout property on the HTTP Action in the Integration Procedure
- C. Check the Chainable checkbox on the integration procedure Action in the OmniScript
- D. Check the Chain on Step Check on the HTTP Action in the Integration Procedure

Answer: B,D

Explanation:

Setting the Timeout property on the HTTP Action in the Integration Procedure allows the developer to specify how long to wait for a response from the external system before timing out. Checking the Chain on Step Check on the HTTP Action in the Integration Procedure allows the developer to chain multiple HTTP Actions together and execute them sequentially. Configuring a Remote action with timeout settings of 120000 is not necessary, as it is already done by default in OmniStudio. Checking the Chainable checkbox on the integration procedure Action in the OmniScript has no effect on calling an external system.

NEW QUESTION # 21

A developer is creating an OmniScript that provisions trail orgs to their customers. The following text block in the Omniscript uses a merge code to display the ID for the new trail org:

- A. To %Details: Customer|n: ID%
- B. To %sDetails: Customer|0: ID\$
- C. To %%%sDetails: Customer|0: ID%%%
- D. To %Details: Customer|1: ID%

Answer: D

Explanation:

The correct syntax for merge codes in OmniScript is %%%sNodeName%%%, where NodeName is the name of the JSON node in the data source. The other options are either missing the s or using incorrect symbols.

NEW QUESTION # 22

A developer is building an OmniScript and needs to save to Salesforce and to an AWS Order Management system. Which OmniScript element could save all of this data?

- A. DataRaptor Load Action
- B. HTTP Action
- C. DataRaptor Post Action
- D. Integration Procedure Action

Answer: D

Explanation:

An Integration Procedure Action can execute an Integration Procedure that contains multiple elements, such as DataRaptor Actions, HTTP Actions, or other Integration Procedure Actions. This can be used to save data to multiple systems, such as Salesforce and AWS Order Management, in one OmniScript element.

NEW QUESTION # 23

A developer builds a new OmniScript. It contains aSet Values element with a ContextId key/value pair that was used during testing. What should the developer do before moving the OmniScript to a production org?

- **A. Delete or Deactivate the Set Values element.**
- B. Update the ContextId value to specify an id from the Production org.
- C. Deactivate the contextId key/value pair
- D. Add a Show/Hide condition on the Set Values element.

Answer: A

Explanation:

The Set Values element with a ContextId key/value pair was used for testing purposes and is not needed for production. The developer should delete or deactivate the Set Values element before moving the OmniScript to a production org.

NEW QUESTION # 24

• • • • •

These Salesforce Certified Omnistudio Developer (Plat-Dev-210) practice test questions also boost your confidence. If you have prepared well, tried all the Salesforce Salesforce Certified Omnistudio Developer Certification Exams, and understood each concept clearly, there is minimal or no chance of failure. Desktop Practice exam software and web-based Salesforce Certified Omnistudio Developer (Plat-Dev-210) practice test are available at [FreePdfDump](https://www.FreePdfDump.com).

Plat-Dev-210 Latest Braindumps Sheet: <https://www.freepdfdump.top/Plat-Dev-210-valid-torrent.html>

- [illegible]