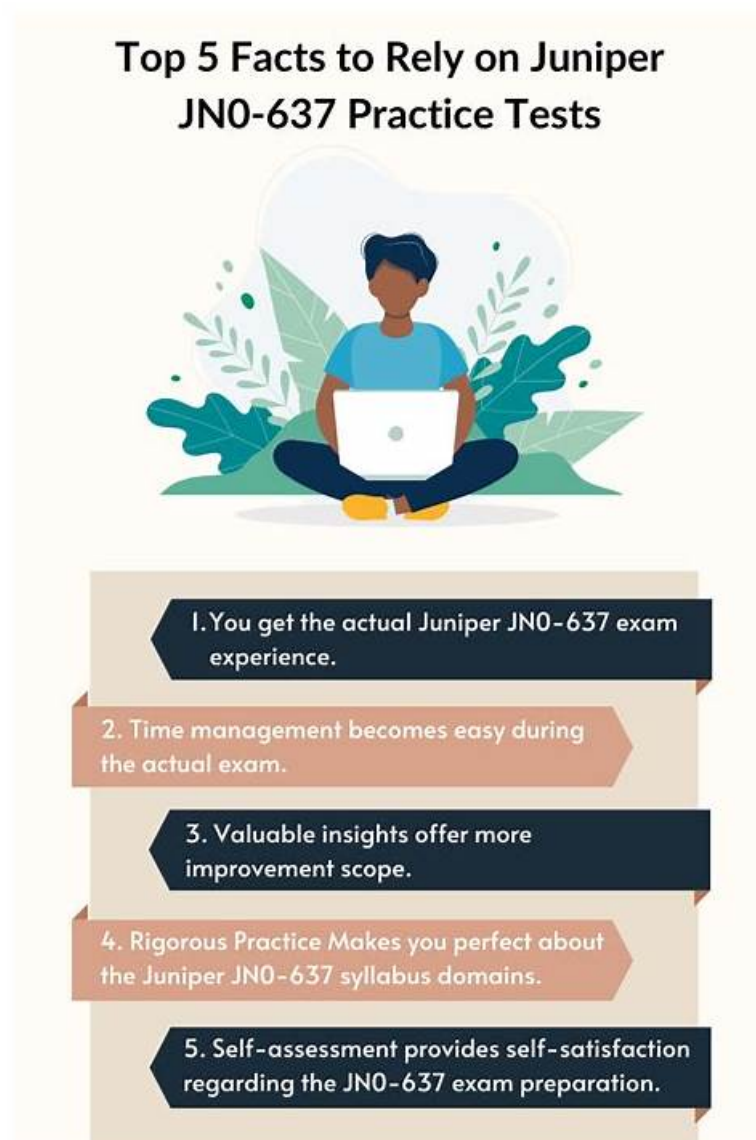


JN0-637 exam collection, Juniper JN0-637 actual test



What's more, part of that Prep4SureReview JN0-637 dumps now are free: https://drive.google.com/open?id=1pv_OCxCTSI9heqf0m4SaRyQUHR-wOcy

We are well-known for our wonderful performance on pushing more and more candidates to pass their JN0-637 exams and achieve their dreaming certifications. There is no exaggeration to say that with our JN0-637 study materials for 20 to 30 hours, you will be ready to pass your JN0-637 Exam. Since our JN0-637 exam torrent is designed on the purpose to be understood by our customers all over the world, it is compiled into the simplest language to save time and efforts.

Juniper JN0-637 Exam Syllabus Topics:

Topic	Details
Topic 1	<ul style="list-style-type: none">• Multinode High Availability (HA): In this topic, aspiring networking professionals get knowledge about multinode HA concepts. To pass the exam, candidates must learn to configure or monitor HA systems.
Topic 2	<ul style="list-style-type: none">• Troubleshooting Security Policies and Security Zones: This topic assesses the skills of networking professionals in troubleshooting and monitoring security policies and zones using tools like logging and tracing.

Topic 3	<ul style="list-style-type: none"> Automated Threat Mitigation: This topic covers Automated Threat Mitigation concepts and emphasizes implementing and managing threat mitigation strategies.
Topic 4	<ul style="list-style-type: none"> Advanced Network Address Translation (NAT): This section evaluates networking professionals' expertise in advanced NAT functionalities and their ability to manage complex NAT scenarios.
Topic 5	<ul style="list-style-type: none"> Layer 2 Security: It covers Layer 2 Security concepts and requires candidates to configure or monitor related scenarios.

>> **Reliable JN0-637 Study Plan** <<

Get Ready for JN0-637 with Juniper's Realistic Exam Questions and Accurate Answers

As far as we know, our JN0-637 exam prep have inspired millions of exam candidates to pursuit their dreams and motivated them to learn more high-efficiently. Our JN0-637 practice materials will not let your down. To lead a respectable life, our experts made a rigorously study of professional knowledge about this exam. We can assure you the proficiency of our JN0-637 Exam Prep. So this is a definitive choice, it means our JN0-637 practice materials will help you reap the fruit of success.

Juniper Security, Professional (JNCIP-SEC) Sample Questions (Q12-Q17):

NEW QUESTION # 12

You want to deploy two vSRX instances in different public cloud providers to provide redundant security services for your network. Layer 2 connectivity between the two vSRX instances is not possible.

What would you configure on the vSRX instances to accomplish this task?

- A. Multinode HA
- B. Virtual chassis
- **C. Secure wire**
- D. Chassis cluster

Answer: C

Explanation:

In this scenario, you are deploying two vSRX instances across different public cloud providers. Since Layer 2 connectivity is not possible between the two instances, traditional chassis clustering (which requires L2) will not work. Instead, you can use Secure Wire to connect the two vSRX instances, ensuring that traffic flows between them securely without Layer 2 requirements.

* Explanation of Answer B (Secure Wire):

* Secure Wire is a feature in Junos that allows two interfaces on the SRX to act as a Layer 2 wire, passing traffic transparently between them. However, traffic passing through the secure wire is still subject to security policies, which allows you to apply firewall rules without performing routing or switching.

* This solution fits the requirement to have security services between the vSRX instances in different cloud environments without needing L2 connectivity.

Juniper Security Reference:

* Secure Wire Overview: Secure Wire allows traffic to pass transparently while still applying security services, which is ideal for situations where Layer 2 connectivity is not possible. Reference: Juniper Secure Wire Documentation.

NEW QUESTION # 13

Exhibit

Referring to the exhibit, a spoke member of an ADVPN is not functioning correctly.

Which two commands will solve this problem? (Choose two.)

- **A.** ☐
- **B.** ☐
- C. ☐
- D. ☐

Answer: A,B

NEW QUESTION # 14

Exhibit:

□ Referring to the exhibit, which two statements are correct?

- A. All of the entries are command and control entries.
- B. All of the entries are a threat level 10.
- C. All of the entries are a threat level 8
- D. All of the entries are Dshield entries

Answer: A,D

Explanation:

Referring to the exhibit, the following statements are correct:

B) All of the entries are command and control entries. Command and control entries are dynamic addresses that represent the IP addresses of servers that are used by malware to communicate with infected hosts. The SRX Series device can block or log the traffic to or from these IP addresses based on the security policies. The exhibit shows that all of the entries have the category DC/1, which stands for command and control.

C) All of the entries are Dshield entries. Dshield is a feed source that provides a list of IP addresses that are associated with malicious activities, such as scanning, spamming, or attacking. The SRX Series device can download the Dshield feed and use it to populate the dynamic address entries. The exhibit shows that all of the entries have the feed dshield, which indicates that they are from the Dshield feed source.

The other statements are incorrect because:

A) All of the entries are not a threat level 8, but a threat level 10. The threat level is a numeric value that indicates the severity of the threat associated with a dynamic address entry. The higher the threat level, the more dangerous the threat. The SRX Series device can use the threat level to prioritize the actions for the dynamic address entries. The exhibit shows that all of the entries have the cc CN, which stands for country code China. According to the Juniper documentation, the country code China has a threat level of 10, which is the highest.

D) All of the entries are not a threat level 10, but they are. See the explanation for option A.

Reference: Understanding Dynamic Address Categories Understanding Dynamic Address Feed Sources
[Understanding Dynamic Address Threat Levels]

NEW QUESTION # 15

You are attempting to ping an interface on your SRX Series device, but the ping is unsuccessful.
What are three reasons for this behavior? (Choose three.)

- A. The ping traffic is matching a firewall filter.
- B. The interface's host-inbound-traffic security zone configuration does not permit ping
- C. The interface is not assigned to a security zone.
- D. The interface has multiple logical units configured.
- E. The device has J-Web enabled.

Answer: A,B,C

NEW QUESTION # 16

You need to generate a certificate for a PKI-based site-to-site VPN. The peer is expecting to use your domain name vpn.juniper.net.

Which two configuration elements are required when you generate your certificate request?
(Choose two.)

- A. domain-name vpn.juniper.net
- B. email admin@juniper.net
- C. subject CN=vpn.juniper.net
- D. ip-address 10.100.0.5

Answer: A,C

• • • • •

JN0-637 Valid Exam Blueprint: <https://www.prep4surereview.com/JN0-637-latest-braindumps.html>

- BTW, DOWNLOAD part of Prep4SureReview JN0-637 dumps from Cloud Storage: https://drive.google.com/open?id=1pv_OCxCTSI9heqif0m4SaRyQUnHR-wOcy