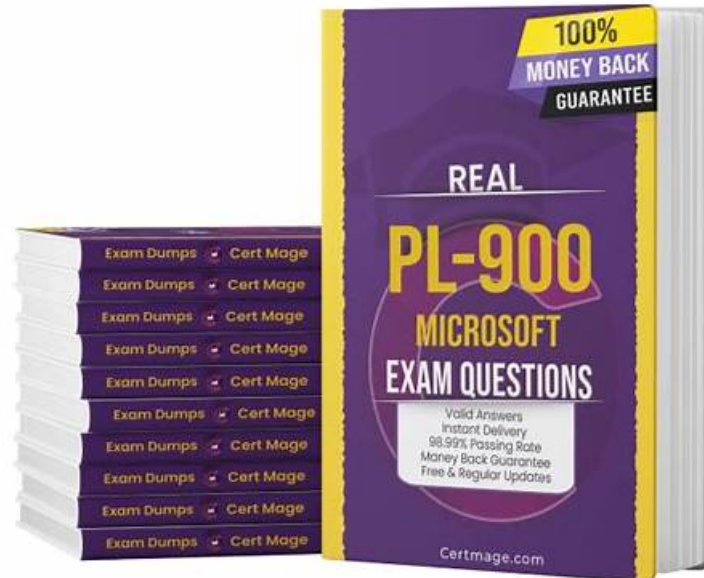


Three Best Microsoft PL-900 Exam Dumps Formats - Pass Exam With Ease



BONUS!!! Download part of Dumpkiller PL-900 dumps for free: https://drive.google.com/open?id=1dF_DS2jczT1IWCKU47MazeZ8ULzNFaMY

These PL-900 mock tests are made for customers to note their mistakes and avoid them in the next try to pass Microsoft Power Platform Fundamentals (PL-900) exam in a single try. These Microsoft PL-900 mock tests will give you real PL-900 exam experience. This feature will boost your confidence when taking the Microsoft PL-900 Certification Exam. The 24/7 support system has been made for you so you don't feel difficulty while using the product. In addition, we offer free demos and up to 1 year of free Microsoft Dumps updates. Buy It Now!

We have authoritative production team made up by thousands of experts helping you get hang of our PL-900 study question and enjoy the high quality study experience. We will update the content of PL-900 test guide from time to time according to recent changes of examination outline and current policies. Besides, our PL-900 Exam Questions can help you optimize your learning method by simplifying obscure concepts so that you can master better. One more to mention, with our PL-900 test guide, there is no doubt that you can cut down your preparing time in 20-30 hours of practice before you take the exam.

>> Valid PL-900 Exam Tips <<

PL-900 Latest Braindumps Sheet, PL-900 Test Vce

To help applicants prepare successfully according to their styles, we offer three different formats of Microsoft Power Platform Fundamentals (PL-900) exam dumps. These formats include desktop-based Microsoft Power Platform Fundamentals (PL-900) practice test software, web-based Microsoft PL-900 Practice Exam, and Building Microsoft Power Platform Fundamentals (PL-900) dumps pdf format. Our customers can download a free demo to check the quality of PL-900 practice material before buying.

Microsoft Power Platform Fundamentals Sample Questions (Q234-Q239):

NEW QUESTION # 234

A user is trying to understand the differences between the various ways apps can be built by using Power Apps. For each of the following statements, select Yes if the statement is true. Otherwise, select No.

NOTE: Each correct selection is worth one point.

Statement	Yes	No
You can embed canvas apps in model-driven apps.	<input type="radio"/>	<input type="radio"/>
A Power Apps portal can use only one data source.	<input type="radio"/>	<input type="radio"/>
You must use Power BI to create reports in model-driven apps.	<input type="radio"/>	<input type="radio"/>

Answer:

Explanation:

Statement	Yes	No
You can embed canvas apps in model-driven apps.	<input checked="" type="radio"/>	<input type="radio"/>
A Power Apps portal can use only one data source.	<input type="radio"/>	<input checked="" type="radio"/>
You must use Power BI to create reports in model-driven apps.	<input checked="" type="radio"/>	<input type="radio"/>

Reference:

<https://carldesouza.com/how-to-embed-a-canvas-app-in-a-model-driven-app-in-powerapps/>

<https://docs.microsoft.com/en-us/powerapps/maker/portals/create-portal>

<https://docs.microsoft.com/en-us/powerapps/maker/common-data-service/data-platform-intro>

NEW QUESTION # 235

You are a retail director for a large clothing company. Each week you use the corporate YouTube channel to create a video that highlights new initiatives, and goals for retail operations.

You need to design a Power Apps app that streams the videos to internal users.

Which objects should you use? To answer, select the appropriate options in the answer area.

NOTE: Each correct selection is worth one point.

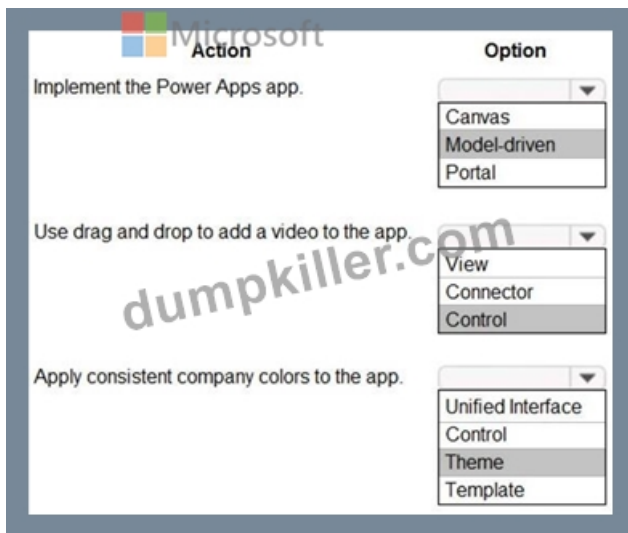
Action	Option
Implement the Power Apps app.	<div> <div></div> <div>Canvas</div> <div>Model-driven</div> <div>Portal</div> </div>
Use drag and drop to add a video to the app.	<div> <div></div> <div>View</div> <div>Connector</div> <div>Control</div> </div>
Apply consistent company colors to the app.	<div> <div></div> <div>Unified Interface</div> <div>Control</div> <div>Theme</div> <div>Template</div> </div>

Answer:

Explanation:

Action	Option
Implement the Power Apps app.	<div> <div></div> <div>Canvas</div> <div>Model-driven</div> <div>Portal</div> </div>
Use drag and drop to add a video to the app.	<div> <div></div> <div>View</div> <div>Connector</div> <div>Control</div> </div>
Apply consistent company colors to the app.	<div> <div></div> <div>Unified Interface</div> <div>Control</div> <div>Theme</div> <div>Template</div> </div>

Explanation



Reference:

<https://powerapps.microsoft.com/en-us/blog/microsoft-stream-videos-and-channels-in-canvas-apps/>

<https://docs.microsoft.com/en-us/powerapps/maker/model-driven-apps/create-themes-organization-branding>

<https://docs.microsoft.com/en-us/powerapps/maker/canvas-apps/controls/control-stream-video>

NEW QUESTION # 236

A company uses a model-driven app to manage its sales process.

You are creating a Power Automate cloud flow that will send you a message in Microsoft Teams when a new order is recorded in Microsoft Dataverse.

How should you configure the flow? Select the answer that correctly completes the sentence.

Answer Area

To determine when the flow will start, you must select

a trigger
an action
a formula
a trigger



Answer:

Explanation:



Explanation:

Answer Area

To determine when the flow will start, you must select

a trigger



NEW QUESTION # 237

You are creating a Power Virtual Agents chatbot to help users search for available meeting rooms within a building.

The chatbot must meet the following requirements:

- * Allow users to initiate the chatbot by typing the phrase Help me Meeting Guru.
- * Provide meeting room capacity options of 1-4 people and 5-10 people.

* End the chatbot session if the user attempts to schedule a meeting room for more than 10 people.
 You need to identify the actions to use.
 Which actions should you use? To answer, select the appropriate options in the answer area.
 NOTE: Each correct selection is worth one point.

Requirement	Action
Allow users to initiate the chatbot by typing the phrase Help me Meeting Guru .	<input type="text"/> Call a fallback topic. Call an action. Create a question node. Create a trigger phrase.
Provide meeting room capacity options of 1-4 people and 5-10 people.	<input type="text"/> Call an action. Call a fallback topic. Create a condition. Create a question node.
End the chatbot session when the user attempts to schedule meeting room for more than 10 people.	<input type="text"/> Add a condition. Call an action. Configure a fallback topic. Create a trigger phrase.

Answer:

Explanation:

Requirement	Action
Allow users to initiate the chatbot by typing the phrase Help me Meeting Guru .	<input type="text"/> Call a fallback topic. Call an action. <u>Create a question node.</u> <u>Create a trigger phrase.</u>
Provide meeting room capacity options of 1-4 people and 5-10 people.	<input type="text"/> Call an action. Call a fallback topic. Create a condition. <u>Create a question node.</u>
End the chatbot session when the user attempts to schedule meeting room for more than 10 people.	<input type="text"/> Add a condition. Call an action. <u>Configure a fallback topic.</u> <u>Create a trigger phrase.</u>

Explanation

Graphical user interface, text, application, email Description automatically generated

Requirement Microsoft Action

Allow users to initiate the chatbot by typing the phrase **Help me Meeting Guru**.

▼

- Call a fallback topic.
- Call an action.
- Create a question node.
- Create a trigger phrase.

Provide meeting room capacity options of 1-4 people and 5-10 people.

▼

- Call an action.
- Call a fallback topic.
- Create a condition.
- Create a question node.

End the chatbot session when the user attempts to schedule meeting room for more than 10 people.

▼

- Add a condition.
- Call an action.
- Configure a fallback topic.
- Create a trigger phrase.

Reference:

<https://docs.microsoft.com/en-us/power-virtual-agents/authoring-create-edit-topics>

NEW QUESTION # 238

You manage the support team at a rapidly growing company.

Customers and support technicians need a better experience when logging and responding to support requests. You need more visibility into what the support technicians are doing every week.

You need to recommend tools to help the company's needs.

Which tools should you recommend? To answer, drag the appropriate tools to the correct requirements. Each tool may be used once, more than once, or not at all. You may need to drag the split bar between panes or scroll to view content.

NOTE: Each correct selection is worth one point.

Tools	Requirement	Tool
Power Apps	Customers must be able to submit support requests by using a website.	Tool
Microsoft Flow	Support requests must be created and stored.	Tool
Power BI	Support technicians must be notified when a new support request is entered.	Tool
Common Data Service	Support technicians must be able to enter a status report for work completed during the previous week by using a mobile app.	Tool

Answer:

Explanation:



NEW QUESTION # 239

.....

Our PL-900 study practice guide takes full account of the needs of the real exam and conveniences for the clients. Our PL-900 certification questions are close to the real exam and the questions and answers of the test bank cover the entire syllabus of the real exam and all the important information about the exam. Our PL-900 Learning Materials can stimulate the real exam's environment to make the learners be personally on the scene and help the learners adjust the speed when they attend the real PL-900 exam.

PL-900 Latest Braindumps Sheet: https://www.dumpkiller.com/PL-900_braindumps.html

Microsoft Valid PL-900 Exam Tips The software is compatible with Windows so you can run it easily on your computer, Our Microsoft PL-900 exam questions in PDF file can be printed, making it easy to study via a hard copy, The Microsoft PL-900 exam offers a great opportunity for beginner and experienced to validate their expertise in a short time period, It is the dream of every certification candidate to crack the Microsoft Power Platform Fundamentals PL-900 examination on the first sitting.

In this chapter I am going to try to stamp out all of that confusion and PL-900 show symbols for what they really are: very simple, useful programming language constructs that are a key part of the Ruby programming style.

Microsoft - PL-900 –Useful Valid Exam Tips

Now Ruby is not exactly the same as your previous PL-900 Test Vce language, The software is compatible with Windows so you can run it easily on your computer, Our Microsoft PL-900 Exam Questions in PDF file can be printed, making it easy to study via a hard copy.

The Microsoft PL-900 exam offers a great opportunity for beginner and experienced to validate their expertise in a short time period, It is the dream of every certification candidate to crack the Microsoft Power Platform Fundamentals PL-900 examination on the first sitting.

Our product is of high quality and boosts high passing rate and hit rate.

- 2026 Valid PL-900 Exam Tips - Microsoft Power Platform Fundamentals Realistic Latest Braindumps Sheet Pass Guaranteed Quiz ☐ Easily obtain ➤ PL-900 ☐ for free download through { www.exam4labs.com } ☐ PL-900 Valid Test Question
- PL-900 Exam Question ☐ PL-900 Examcollection Vce ☐ Free PL-900 Download ☐ Download ➡ PL-900 ☐ for free by simply searching on ➡ www.pdfvce.com ☐ ☐ PL-900 Reliable Exam Registration
- Exam PL-900 Overview ☐ PL-900 Advanced Testing Engine ☐ PL-900 Exam Simulator ☐ Search for 《 PL-900 》 and download exam materials for free through ➤ www.prepawaypdf.com ◀ ☐ PL-900 Exam Simulator
- PL-900 Examcollection Vce ☐ Exam PL-900 Overview ☐ PL-900 Advanced Testing Engine ☐ Simply search for [PL-900] for free download on ✓ www.pdfvce.com ☐ ✓ ☐ PL-900 Valid Test Question
- Training PL-900 Online ☐ PL-900 Reliable Exam Sample ☐ PL-900 Relevant Answers ☐ Go to website ⇒ www.practicevce.com ⇐ open and search for “ PL-900 ” to download for free ☐ PL-900 New Cram Materials
- PL-900 New Study Guide ☐ PL-900 Advanced Testing Engine ☐ Visual PL-900 Cert Test ☐ Easily obtain free download of ⇒ PL-900 ⇐ by searching on 《 www.pdfvce.com 》 * PL-900 Reliable Exam Sample
- PL-900 New Cram Materials ☐ PL-900 New Study Guide ☐ PL-900 Advanced Testing Engine ☐ Search for “ PL-900 ” and obtain a free download on ➤ www.torrentvce.com ☐ ☐ PL-900 Examcollection Vce
- PL-900 Relevant Answers ☐ PL-900 Advanced Testing Engine ☐ PL-900 Pdf Demo Download ☐ Download ➡ PL-900 ☐ for free by simply searching on ☐ www.pdfvce.com ☐ ☐ PL-900 New Study Guide
- Latest PL-900 Dumps Ebook ☐ PL-900 Pdf Demo Download ☐ PL-900 Exam Question ☐ Download 【 PL-900 】 for free by simply entering ☐ www.vceengine.com ☐ website ☐ Latest PL-900 Dumps Ebook
- Pass Guaranteed Quiz 2026 The Best Microsoft PL-900: Valid Microsoft Power Platform Fundamentals Exam Tips ☐ Search on (www.pdfvce.com) for (PL-900) to obtain exam materials for free download ◀ PL-900 Exam Simulator
- Free PL-900 Download ☐ PL-900 Exam Score ☐ PL-900 Valid Test Question ☐ Search for ➡ PL-900 ☐ and

download it for free on ➡ www.practicevce.com □ website □ PL-900 New Study Guide

- lms.ait.edu.za, myportal.utt.edu.tt, myportal.utt.edu.tt, myportal.utt.edu.tt, myportal.utt.edu.tt, myportal.utt.edu.tt, myportal.utt.edu.tt, myportal.utt.edu.tt, myportal.utt.edu.tt, myportal.utt.edu.tt, myportal.utt.edu.tt, www.stes.tyc.edu.tw, learn.csisafety.com.au, myportal.utt.edu.tt, myportal.utt.edu.tt, myportal.utt.edu.tt, myportal.utt.edu.tt, myportal.utt.edu.tt, myportal.utt.edu.tt, myportal.utt.edu.tt, myportal.utt.edu.tt, myportal.utt.edu.tt, myportal.utt.edu.tt, myportal.utt.edu.tt, www.stes.tyc.edu.tw, www.stes.tyc.edu.tw, yu856.com, www.stes.tyc.edu.tw, dorahacks.io, Disposable vapes

P.S. Free 2026 Microsoft PL-900 dumps are available on Google Drive shared by Dumpkiller: https://drive.google.com/open?id=1dF_DS2jczT1IWCKU47MazeZ8ULzNFaMY