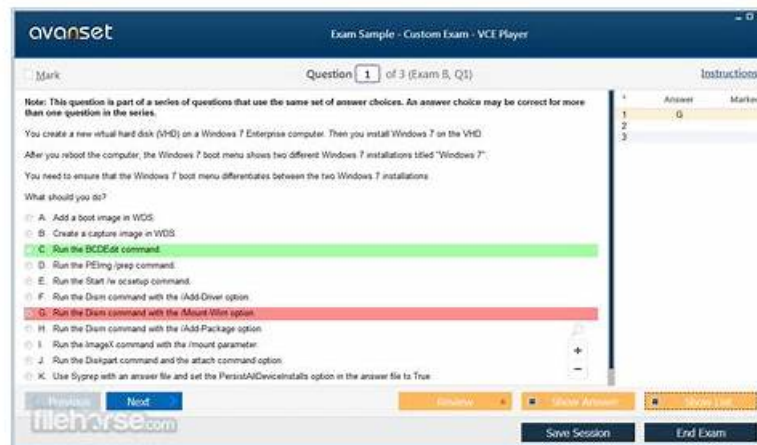


# C\_ADBTP VCE Exam Simulator & Practice C\_ADBTP Online



Undoubtedly, passing the SAP C\_ADBTP certification exam is one big achievement. Regardless of how tough the C\_ADBTP exam is, it serves an important purpose of improving your skills and knowledge of a specific field. Once you become certified by SAP C\_ADBTP, a whole new career scope will open up to you.

C\_ADBTP offers free demo for C\_ADBTP real test. You can check out the interface, question quality and usability of our C\_ADBTP practice exams before you decide to buy it. You can download our C\_ADBTP test engine and install it on your phone or other device, then if you are waiting for the bus or on the subway, you can take C\_ADBTP Exam Dumps out for study. The promotion is regular, so please hurry up to get the most cost-effective SAP prep exam dumps.

>> C\_ADBTP VCE Exam Simulator <<

## Practice C\_ADBTP Online - C\_ADBTP Best Preparation Materials

Prep4sureGuide is website that can help a lot of IT people realize their dreams. If you have a IT dream, then quickly click the click of Prep4sureGuide. It has the best training materials, which is Prep4sureGuide;s SAP C\_ADBTP Exam Training materials. This training materials is what IT people are very wanted. Because it will make you pass the exam easily, since then rise higher and higher on your career path.

## SAP Administrating SAP Business Technology Platform(C\_ADBTP\_2601) Sample Questions (Q10-Q15):

### NEW QUESTION # 10

#### SIMULATION

Enable a Cloud Foundry Environment

Add a service plan for Cloud Foundry environment and enable it in a subaccount.

Task 1: Add a Service Plan for Cloud Foundry Environment

In your SAP BTP cockpit, in your EU HCM Dev subaccount, entitle one MEMORY service plan for the Cloud Foundry Runtime.

#### Answer:

Explanation:

See the Explanation below for complete solution.

Explanation:

Before you start

Log in to SAP BTP Cockpit.

Open your correct Global Account.

Go to the Human Resources directory.

Open the EU HCM Dev subaccount.

This matters because the runtime memory quota must be assigned to the EU HCM Dev subaccount specifically. SAP documents

that the MEMORY plan is the quota-bearing plan for Cloud Foundry Runtime.

Step 1 - Open the EU HCM Dev subaccount

In the cockpit, choose Directories.

Open Human Resources.

Select EU HCM Dev.

You should now be on the EU HCM Dev subaccount page.

Step 2 - Open Entitlements

In EU HCM Dev, choose Entitlements.

SAP Help confirms that service plans and quota assignments for a subaccount are configured in the Entitlements area.

Step 3 - Configure entitlements

Click Configure Entitlements or Add Service Plans.

Search for:

Cloud Foundry Runtime

In SAP Help, this appears as Cloud Foundry Runtime (APPLICATION\_RUNTIME), and the relevant plan for assigning runtime memory is MEMORY.

Step 4 - Select the MEMORY plan

Under Cloud Foundry Runtime, select:

MEMORY

Set the quantity to 1 if the cockpit shows an amount/quota field.

Add the plan to the subaccount.

Save the entitlement changes.

SAP documents that the MEMORY plan is specifically used to assign runtime memory quota to the subaccount, and that 1 unit corresponds to 1 GB of runtime memory when quota is adjusted or assigned.

Step 5 - Verify the result

After saving, check the Entitlements page of EU HCM Dev.

You should see:

Cloud Foundry Runtime

plan: MEMORY

quantity: 1 if shown

Final expected result

Inside EU HCM Dev:

Cloud Foundry Runtime is entitled

the service plan is MEMORY

the assigned amount is 1 if the cockpit displays quantity/quota units

Common mistakes to avoid

Doing this in the wrong subaccount; it must be EU HCM Dev

Choosing the wrong Cloud Foundry plan; the task asks for MEMORY

Forgetting to save the entitlement change after adding the plan

Confusing the runtime memory entitlement with the later step of actually enabling the Cloud Foundry environment; SAP distinguishes the MEMORY runtime quota from enabling the Cloud Foundry org itself.

## NEW QUESTION # 11

### SIMULATION

Task 2: Create Subaccounts in a Directory

In the Partner directory, create the subaccount AM PA Dev Test (Description: Partner Development and Testing) with subdomain btpops#####-am-pa-dev-test in the region Microsoft Azure → US West (WA) cf-us20.

In the Partner directory, create the subaccount AM PA Prod (Description: Partner Production) with subdomain btpops#####-am-pa-prod using AM PA Dev Test as source subaccount. Set the subaccount as used in production.

### Answer:

Explanation:

See the Explanation below for complete solution.

Explanation:

Task 2 - Create Subaccounts in a Directory

You must create these two subaccounts inside the Partner directory:

AM PA Dev Test

AM PA Prod

Important:

Replace ##### with your global account number  
Enter all names and subdomains exactly  
Be careful with hyphens and spaces  
AM PA Prod must be marked as used in production  
Before You Start  
Log in to SAP BTP Cockpit.  
Open your correct Global Account.  
Go to Directories.  
Open the Partner directory.

Why this matters:

Both subaccounts in this task must be created inside the Partner directory. If you create them under the global account or another directory, the task will be wrong.

Step 1 - Open the Partner Directory

What to do

In the left menu, click Directories.

In the directory list, select Partner.

Explanation:

The Partner directory is the container where both required subaccounts must be created.

What to verify

You should now be inside the Partner directory page.

Step 2 - Start Creating the First Subaccount

What to do

Inside the Partner directory, go to Subaccounts.

Click Create → Subaccount.

Explanation:

This opens the subaccount creation screen.

What to verify

You should now see the form for creating a new subaccount.

Step 3 - Enter Data for AM PA Dev Test

What to do

Enter the following values:

Display Name / Name: AM PA Dev Test

Description: Partner Development and Testing

Subdomain: btpops#####-am-pa-dev-test

Then choose the region:

Cloud Provider: Microsoft Azure

Region: US West (WA)

Environment / Technical Region: cf-us20

After checking all values, click Create.

Explanation:

This creates the development and testing subaccount for the Partner directory.

The important points are:

the subaccount name must match exactly

the subdomain must include your account number in place of #####

the region must be Microsoft Azure → US West (WA) cf-us20

What to verify

After creation, you should see the new subaccount:

AM PA Dev Test

inside the Partner directory.

Step 4 - Confirm the First Subaccount Exists

What to do

Check the subaccounts list under Partner.

Explanation:

Before creating the production subaccount, confirm that AM PA Dev Test was created successfully, because it will be used as the source subaccount for the next step.

What to verify

You should see:

AM PA Dev Test

If it is not there, do not continue until it is created correctly.

Step 5 - Start Creating the Second Subaccount

What to do

Still inside the Partner directory, click Create → Subaccount again.

Explanation:

This opens a new subaccount creation form for the production subaccount.

Step 6 - Enter Data for AM PA Prod

What to do

Enter the following values:

Display Name / Name: AM PA Prod

Description: Partner Production

Subdomain: btpops#####-am-pa-prod

Then set:

Source Subaccount: AM PA Dev Test

Enable the production setting:

Used in Production: Yes

Then click Create.

Explanation:

This creates the production subaccount by using AM PA Dev Test as the source subaccount.

Using a source subaccount means SAP BTP copies base settings from the selected source, which helps keep configuration aligned.

The production indicator is mandatory here because this is the production subaccount.

What to verify

After creation, you should see:

AM PA Prod

inside the Partner directory, and it should be marked as a production subaccount.

Final Expected Result for Task 2

Inside the Partner directory, you must have these two subaccounts:

1. AM PA Dev Test

Description: Partner Development and Testing

Subdomain: btpops#####-am-pa-dev-test

Region: Microsoft Azure → US West (WA) cf-us20

2. AM PA Prod

Description: Partner Production

Subdomain: btpops#####-am-pa-prod

Source Subaccount: AM PA Dev Test

Used in Production: Yes

Common Mistakes to Avoid

1. Creating the subaccounts in the wrong place

Both subaccounts must be created in:

Partner directory

Not in:

Global Account

Americas

Eurasia

Human Resources

2. Wrong subdomain format

Use exactly:

btpops#####-am-pa-dev-test

btpops#####-am-pa-prod

Replace only ##### with your global account number.

Do not:

remove hyphens

add spaces

misspell dev-test or pa-prod

3. Wrong region for AM PA Dev Test

It must be:

Microsoft Azure

US West (WA)

cf-us20

4. Forgetting the source subaccount for AM PA Prod

You must select:

AM PA Dev Test

as the source subaccount.

5. Forgetting the production flag

For AM PA Prod, make sure:

Used in Production is enabled

## NEW QUESTION # 12

### SIMULATION

Create Directories and Subaccounts

In a global account for SAP Business Technology Platform (BTP), create a hierarchy of subaccounts using directories.

Task 1: Create Directories

In your SAP BTP cockpit, create the directory Americas (Description: Americas Accounts) with your global account as the parent.

Create the directory Eurasia (Description: Eurasia Accounts) with your global account as the parent.

Create the directory Partner (Description: Partner Accounts) with the Americas directory as the parent. Add the label access with value external.

Create the directory Human Resources (Description: Human Resources Accounts) with the Eurasia directory as the parent. Add the label access with value internal.

### Answer:

Explanation:

See the Explanation below for complete solution

Explanation:

Task 1: Create Directories

You need to create these directories:

Americas

Eurasia

Partner under Americas with label access=external

Human Resources under Eurasia with label access=internal

Before You Start

Log in to the SAP BTP Cockpit.

Make sure you are inside the correct Global Account.

Open the left-side navigation menu.

Why this is important:

All directories in this task must be created inside the correct global account hierarchy. If you create them in the wrong location, the simulation result will be incorrect.

Step 1 - Create Directory Americas

What to do

In the SAP BTP Cockpit, select your Global Account.

In the left navigation menu, click Directories.

Click Create or Create Directory.

Fill the fields as follows:

Name: Americas

Description: Americas Accounts

Parent: your Global Account

Click Create.

□ Explanation:

This creates a top-level directory directly under the global account.

It will later be used as the parent for the Partner directory.

What to verify

After creation, you should see:

Americas

listed under the directories of the global account.

Step 2 - Create Directory Eurasia

What to do

Stay in Directories.

Click Create Directory again.

Fill the fields:

Name: Eurasia

Description: Eurasia Accounts

Parent: your Global Account

Click Create.

□ Explanation:

This creates another top-level directory, parallel to Americas.

What to verify

You should now see both:

Americas

Eurasia

under the global account.

Step 3 - Create Directory Partner under Americas

What to do

In the Directories area, select Americas.

Click Create Directory.

Enter:

Name: Partner

Description: Partner Accounts

Parent: Americas

Locate the Labels section.

Add a new label:

Key: access

Value: external

Click Create.

□

□ Explanation:

This creates Partner as a child directory under Americas.

The label is required and must be entered exactly:

access = external

This label helps classify the directory.

What to verify

Under Americas, you should now see:

Partner

and the directory should contain the label:

access=external

Step 4 - Create Directory Human Resources under Eurasia

What to do

Go back to the Directories list.

Select Eurasia.

Click Create Directory.

Enter:

Name: Human Resources

Description: Human Resources Accounts

Parent: Eurasia

In the Labels section, add:

Key: access

Value: internal

Click Create.

□ Explanation:

This creates Human Resources as a child directory under Eurasia.

The required label is:

access = internal

What to verify

Under Eurasia, you should now see:

Human Resources

and the label should be:

access=internal

Final Expected Directory Structure

After completing Task 1, your structure must be exactly like this:

Global Account

Americas

Partner

Label: access=external

Eurasia  
Human Resources  
Label: access=internal  
□ Important Checks Before Moving On  
Verify all of the following:  
Americas exists  
Eurasia exists  
Partner is under Americas  
Human Resources is under Eurasia  
Partner has label access=external  
Human Resources has label access=internal  
All names and descriptions are entered exactly as required  
Common Mistakes to Avoid  
1. Wrong parent  
Partner must be created under Americas  
Human Resources must be created under Eurasia  
2. Wrong label key or value  
Use exactly:  
access → external  
access → internal  
3. Spelling errors  
Be careful with:  
Americas  
Eurasia  
Partner  
Human Resources  
4. Creating all directories directly under the global account  
Only Americas and Eurasia are direct children of the global account.  
Partner and Human Resources must be child directories.

### **NEW QUESTION # 13**

#### **SIMULATION**

##### **Enable Service Subscriptions**

In the entitlements of a directory, add a service plan for a service subscription. Assign and create this subscription to/in a subaccount of the directory.

##### **Task 1: Entitle a Service in a Directory**

In your SAP BTP cockpit, enable entitlement management for your Partner directory.

In your Partner directory, entitle the standard (Application) service plan for the SAP Build Work Zone, standard edition.

#### **Answer:**

##### **Explanation:**

See the Explanation below for complete solution.

##### **Explanation:**

##### **Before You Start**

Log in to the SAP BTP Cockpit.

Open the correct Global Account.

Go to Directories.

Open the Partner directory.

##### **Why this matters:**

Both actions in this task must be done at the Partner directory level, not directly in a subaccount.

##### **Step 1 - Open the Partner Directory**

##### **What to do**

In the left navigation, click Directories.

Select Partner.

##### **Explanation:**

This opens the directory where you must manage entitlements for this task.

##### **What to verify**

You should now be inside the Partner directory page.

□

## Step 2 - Open Entitlements

What to do

Inside the Partner directory, go to Entitlements.

Explanation:

This is the area where you manage quota and service plan assignments for the directory and its subaccounts.

What to verify

You should see the entitlements page for Partner.

## Step 3 - Enable Entitlement Management for the Partner Directory

What to do

In the Entitlements area, look for the option to Enable Entitlement Management.

Click Enable.

Explanation:

A directory must have entitlement management enabled before you can add and manage service plans there.

What to verify

After enabling, the Partner directory should allow entitlement assignment and management.

## Step 4 - Start Adding a Service Plan

What to do

In the Entitlements page of the Partner directory, click Configure Entitlements or Add Service Plans.

Explanation:

This opens the service catalog where you can select the service and plan to add.

What to verify

You should see the list of available services and plans.

## Step 5 - Find the Required Service

What to do

Search for or scroll to:

SAP Build Work Zone, standard edition

Select that service.

Explanation:

You must choose the exact service named in the task. Be careful not to select a different SAP Build service by mistake.

What to verify

The selected service should be:

SAP Build Work Zone, standard edition

## Step 6 - Select the Correct Service Plan

What to do

Under the selected service, choose the service plan:

standard (Application)

Add the plan to the entitlement configuration.

Explanation:

This task requires the standard (Application) service plan specifically.

Do not choose another plan if more than one is listed.

What to verify

The selected plan should read exactly:

standard (Application)

## Step 7 - Save the Entitlement Changes

What to do

Click Add, Save, or Confirm depending on the screen.

Then click Save for the entitlement configuration.

Explanation:

This commits the new service plan entitlement to the Partner directory.

What to verify

After saving, the entitlements list for Partner should include:

SAP Build Work Zone, standard edition

plan: standard (Application)

## Final Expected Result for Task 1

Inside the Partner directory:

Entitlement management is enabled

The service SAP Build Work Zone, standard edition is entitled

The plan standard (Application) is added

Common Mistakes to Avoid

1. Working in the wrong level

Do this in:

Partner directory

Not in:

Global Account

Subaccount

Another directory

2. Forgetting to enable entitlement management first

If entitlement management is not enabled for the directory, you may not be able to add the service plan properly.

3. Choosing the wrong service

Be sure you select:

SAP Build Work Zone, standard edition

Not another SAP Build service.

4. Choosing the wrong plan

You must select:

standard (Application)

## NEW QUESTION # 14

.....

In the 21 Century, the C\_ADBTP certification became more and more recognized in the society because it represented the certain ability of examinees. However, in order to obtain C\_ADBTP certification, you have to spend a lot of time preparing for the C\_ADBTP Exam. Many people gave up because of all kinds of difficulties before the examination, and finally lost the opportunity to enhance their self-worth. As a thriving multinational company, we are always committed to solving this problem.

**Practice C\_ADBTP Online:** [https://www.prep4sureguide.com/C\\_ADBTP-prep4sure-exam-guide.html](https://www.prep4sureguide.com/C_ADBTP-prep4sure-exam-guide.html)

I love the PDF version of C\_ADBTP learning guide the best, At this moment, we sincerely recommend our C\_ADBTP Dumps exam materials to you, which will be your best companion on the way to preparing for the exam, Dear, if you have bought our Practice C\_ADBTP Online - Administrating SAP Business Technology Platform(C\_ADBTP\_2601) certkingdom braindumps, one year free update is available for you, SAP C\_ADBTP VCE Exam Simulator You will be attracted by our test engine for its smooth operation.

Before joining Microsoft, Tudor helped build a number of software Practice C\_ADBTP Online solutions, including a workflow and document management application and a real-time production monitoring system.

The Null Command The and || Constructs, I love the PDF version of C\_ADBTP learning guide the best, At this moment, we sincerely recommend our C\_ADBTP Dumps exam materials to you, which will be your best companion on the way to preparing for the exam.

## **Pass-Sure C\_ADBTP VCE Exam Simulator & Leader in Qualification Exams & Fast Download SAP Administrating SAP Business Technology Platform(C\_ADBTP\_2601)**

Dear, if you have bought our Administrating SAP Business Technology Platform(C\_ADBTP\_2601) certkingdom braindumps, C\_ADBTP one year free update is available for you, You will be attracted by our test engine for its smooth operation.

You needn't worry that our product C\_ADBTP Paper can't help you pass the exam and waste your money.

- Reliable C\_ADBTP Exam Simulator □ New C\_ADBTP Dumps Ebook □ C\_ADBTP Reliable Test Experience □ Easily obtain ➡ C\_ADBTP □ for free download through “[www.examcollectionpass.com](http://www.examcollectionpass.com)” □ Reliable C\_ADBTP Exam Simulator
- C\_ADBTP Actual Torrent: Administrating SAP Business Technology Platform(C\_ADBTP\_2601) - C\_ADBTP Pass-King Materials - C\_ADBTP Actual Exam □ Search for □ C\_ADBTP □ and download it for free immediately on ( [www.pdfvce.com](http://www.pdfvce.com) ) □ C\_ADBTP Updated CBT
- Reliable C\_ADBTP Exam Simulator □ C\_ADBTP Online Lab Simulation □ Certification C\_ADBTP Book Torrent □ Search for □ C\_ADBTP □ and easily obtain a free download on **【 [www.troytecdumps.com](http://www.troytecdumps.com) 】** □ C\_ADBTP Latest Exam Format
- C\_ADBTP Actual Torrent: Administrating SAP Business Technology Platform(C\_ADBTP\_2601) - C\_ADBTP Pass-King Materials - C\_ADBTP Actual Exam □ 《 [www.pdfvce.com](http://www.pdfvce.com) 》 is best website to obtain ▷ C\_ADBTP ◁ for free download □ Test C\_ADBTP Dumps Pdf

- C\_ADBTP Actual Torrent: Administrating SAP Business Technology Platform(C\_ADBTP\_2601) - C\_ADBTP Pass-King Materials - C\_ADBTP Actual Exam □ Download 《 C\_ADBTP 》 for free by simply entering “ www.examcollectionpass.com ” website □ C\_ADBTP Latest Test Fee
- Valid Dumps C\_ADBTP Pdf □ C\_ADBTP Latest Exam Materials □ C\_ADBTP Online Lab Simulation □ Easily obtain > C\_ADBTP □ for free download through [ www.pdfvce.com ] □ Reliable C\_ADBTP Practice Questions
- C\_ADBTP VCE Exam Simulator - Quiz SAP First-grade Practice C\_ADBTP Online □ Simply search for ➔ C\_ADBTP □ for free download on ➔ www.verifiedumps.com □ □ □ □ Test C\_ADBTP Dumps Pdf
- New C\_ADBTP Dumps Ebook □ C\_ADBTP Updated CBT □ Latest C\_ADBTP Learning Materials □ Simply search for ➔ C\_ADBTP □ for free download on ( www.pdfvce.com ) □ Valid Dumps C\_ADBTP Pdf
- C\_ADBTP Prep Torrent - C\_ADBTP Latest Questions - C\_ADBTP Vce Guide □ Open website ▷ www.vce4dumps.com ◁ and search for □ C\_ADBTP □ for free download 📄 Valid C\_ADBTP Test Review
- C\_ADBTP Latest Exam Materials □ C\_ADBTP Updated CBT □ C\_ADBTP Latest Exam Materials □ Open ✓ www.pdfvce.com □ ✓ □ and search for ☀ C\_ADBTP □ ☀ □ to download exam materials for free □ C\_ADBTP Latest Test Fee
- New C\_ADBTP Dumps Ebook □ Reliable C\_ADBTP Exam Simulator □ Certification C\_ADBTP Book Torrent □ Simply search for 【 C\_ADBTP 】 for free download on “ www.prepawayexam.com ” □ C\_ADBTP Reliable Test Experience
- myportal.utt.edu.tt, myportal.utt.edu.tt, myportal.utt.edu.tt, myportal.utt.edu.tt, myportal.utt.edu.tt, myportal.utt.edu.tt, myportal.utt.edu.tt, myportal.utt.edu.tt, myportal.utt.edu.tt, myportal.utt.edu.tt, keziandcy827061.blog2news.com, lewysvdvd143751.blogsvirals.com, hubwebsites.com, abelrpej881330.blogacep.com, www.stes.tyc.edu.tw, www.stes.tyc.edu.tw, myportal.utt.edu.tt, myportal.utt.edu.tt, myportal.utt.edu.tt, myportal.utt.edu.tt, myportal.utt.edu.tt, myportal.utt.edu.tt, myportal.utt.edu.tt, myportal.utt.edu.tt, myportal.utt.edu.tt, myportal.utt.edu.tt, myportal.utt.edu.tt, myportal.utt.edu.tt, www.stes.tyc.edu.tw, infopage.com, Disposable vapes