

Certification SAP P_SAPEA_2023 Exam Cost, P_SAPEA_2023 Reliable Test Dumps



2026 Latest PassLeaderVCE P_SAPEA_2023 PDF Dumps and P_SAPEA_2023 Exam Engine Free Share:
https://drive.google.com/open?id=1I77G4_9Cb7m8lecESA1TTT3hapBx2NO0

At PassLeaderVCE, we are committed to providing candidates with the best possible P_SAPEA_2023 practice material to help them succeed in the SAP Certified Professional - SAP Enterprise Architect exam. With our real P_SAPEA_2023 exam questions in P_SAPEA_2023 PDF file, customers can be confident that they are getting the best possible SAP Certified Professional - SAP Enterprise Architect preparation material for quick preparation. The SAP P_SAPEA_2023 PDF Questions are portable and you can also take their print.

SAP P_SAPEA_2023 Exam Syllabus Topics:

| Topic | Details |
|---------|---|
| Topic 1 | <ul style="list-style-type: none">Application, Data, and Technical Architecture: This topic evaluates your knowledge about artifact content, stakeholders, best practices of SAP Reference Content, the SAP Integration Advisory Methodology, and SAP Clean Core principles and strategy. |
| Topic 2 | <ul style="list-style-type: none">Business Architecture: The topic of business architecture discusses business capability mapping and end-to-end processes. |
| Topic 3 | <ul style="list-style-type: none">Architecture vision and roadmap: It focuses on developing the architecture vision and roadmap for a company. The topic also covers existing and future business models and capabilities and target businesssolution architecture roadmap. |
| Topic 4 | <ul style="list-style-type: none">SAP Enterprise Architecture Framework and toolset: The focal point of this topic is the company's business strategy. It also covers SAP Reference Architecture content, IT requirements, business requirements and (SAP) solution space, and SAP Enterprise Architecture-related artifacts. |

>> Certification SAP P_SAPEA_2023 Exam Cost <<

High-quality Certification P_SAPEA_2023 Exam Cost Spend Your Little Time and Energy to Pass P_SAPEA_2023: SAP Certified Professional - SAP Enterprise Architect exam

SAP P_SAPEA_2023 exam certification is widely recognized IT certifications. People around the world prefer P_SAPEA_2023 exam certification to make their careers more strengthened and successful. Speaking of SAP P_SAPEA_2023 exam, PassLeaderVCE SAP P_SAPEA_2023 exam training materials have been ahead of other sites. Because PassLeaderVCE has a strong IT elite team, they always follow the latest SAP P_SAPEA_2023 Exam Training materials, with their professional mind to

SAP Certified Professional - SAP Enterprise Architect Sample Questions (Q11-Q16):

NEW QUESTION # 11

As part of the mapping of a Business Architecture to the Solution Architecture, an Environment & Location Diagram must be developed in the Technology Architecture phase. In this context, numerous architecture decisions have to be made. Among other things, you must check which SAP BTP services and which SAP SaaS solutions are available as part of the Solution Architecture in which data center of the desired hyperscaler. How do you go about this validation?

- A. I use the SAP Discovery Center to check in which data centers the respective SAP BTP services and the SAP SaaS solutions are available.
- **B. I use the SAP Discovery Center to check which of the selected SAP BTP services are offered by which hyperscaler. With help from the SAP Trust Center, I check in which data center the involved SAP SaaS solutions are available.**
- C. I use the SAP Business Accelerator Hub (api.sap.com) because it provides all the required information regarding SAP BTP service and SAP SaaS solution availability for each hyperscaler, in a central location.

Answer: B

Explanation:

According to the SAP Discovery Center 1 and the SAP Trust Center 2, the steps involved in this validation are:

Use the SAP Discovery Center to check which of the selected SAP BTP services are offered by which hyperscaler. The SAP Discovery Center is a platform that provides access to SAP BTP services, events, and related resources, and helps you to implement your use cases on SAP BTP with step-by-step guidance and support from topic experts and SAP Community. In the Service Catalog section of the SAP Discovery Center, you can browse and filter the available SAP BTP services by category, region, or hyperscaler. You can also compare the features and pricing of different services, and learn how to use them in your projects.

Use the SAP Trust Center to check in which data center the involved SAP SaaS solutions are available. The SAP Trust Center is a platform that provides information on cloud performance, security, privacy, and compliance. In the Certification and Compliance section of the SAP Trust Center, you can find certificates, reports, and attestations that show how SAP meets various industry standards and regulatory requirements. You can also filter the documents by solution, region, or hyperscaler, and download them for your reference.

The other options (A and C) are not correct for how to validate the availability of SAP BTP services and SAP SaaS solutions in the desired hyperscaler's data center, because they either do not exist or do not provide the required information. For example:

Option A is not correct because there is no such platform as SAP Business Accelerator Hub (api.sap.com) that provides all the required information regarding SAP BTP service and SAP SaaS solution availability for each hyperscaler. The correct name of the platform is SAP API Business Hub (api.sap.com), which is a platform that provides access to SAP APIs, events, and related resources, but it does not provide any information on the availability of SAP BTP services or SAP SaaS solutions for each hyperscaler or data center.

Option C is not correct because the SAP Discovery Center does not provide any information on the availability of SAP SaaS solutions for each hyperscaler or data center. The SAP Discovery Center only provides information on the availability of SAP BTP services for each hyperscaler or region, but not for specific data centers. To check the availability of SAP SaaS solutions for each data center, you need to use the SAP Trust Center instead.

Topic 1, Case Study - Wanderlust

Introduction

Wanderlust GmbH, headquartered in Germany but with manufacturing facilities and sales globally, is a leading global manufacturer of conventional fuel driven cars. They are renowned for their best-in-class engineering, but not so much for aftermarket customer service. In recent years, Wanderlust has had limited success expanding into the market of electric vehicles. Following is Wanderlust's geographical manufacturing and supply spread:



Wanderlust offers one compact electric Sedan (model ELAN) and one compact electric SUV (model ELUV), each with three variants - basic (LX), mid-range (VX) and high-end (ZX). Customers can also choose from a range of five metallic colors, two drive trains and two battery ranges. Overall, 50 different combinations are offered for all segments and variants put together.

Extracts from CEO Interviews - Business Environment

Constraints/Issues

- o Stiff water consumption regulations and enormous penalties for violation - Lithium extraction is a heavy water intensive process and mine locations are in very arid areas like the Australian outback and Atacama Desert
- o Significant dependence on external suppliers of Lithium batteries due to limited number of manufacturing units, long lead times and high carbon footprint in all car manufacturing facilities except Brazil.

- o Long delays in spare battery availability, leading to an avalanche of unresolved battery related customer complaints for vehicles under warranty
- o Limited charging infrastructure, long charging cycles (as compared to refilling fuel) and slow resolution of battery related complaints.

- o Dwindling in store footfall due to pandemic (for feature-based vehicle selection prior to test drive)

Wanderlust offers one compact electric Sedan (model ELAN) and one compact electric SUV (model ELUV), each with three variants - basic (LX), mid-range (VX) and high-end (ZX). Customers can also choose from a range of five metallic colors, two drive trains and two battery ranges. Overall, 50 different combinations are offered for all segments and variants put together.

Extracts from CEO Interviews - Business Environment

Constraints/Issues

- o Stiff water consumption regulations and enormous penalties for violation - Lithium extraction is a heavy water intensive process and mine locations are in very arid areas like the Australian outback and Atacama Desert
- o Significant dependence on external suppliers of Lithium batteries due to limited number of manufacturing units, long lead times and high carbon footprint in all car manufacturing facilities except Brazil.

- o Long delays in spare battery availability, leading to an avalanche of unresolved battery related customer complaints for vehicles under warranty
- o Limited charging infrastructure, long charging cycles (as compared to refilling fuel) and slow resolution of battery related complaints.

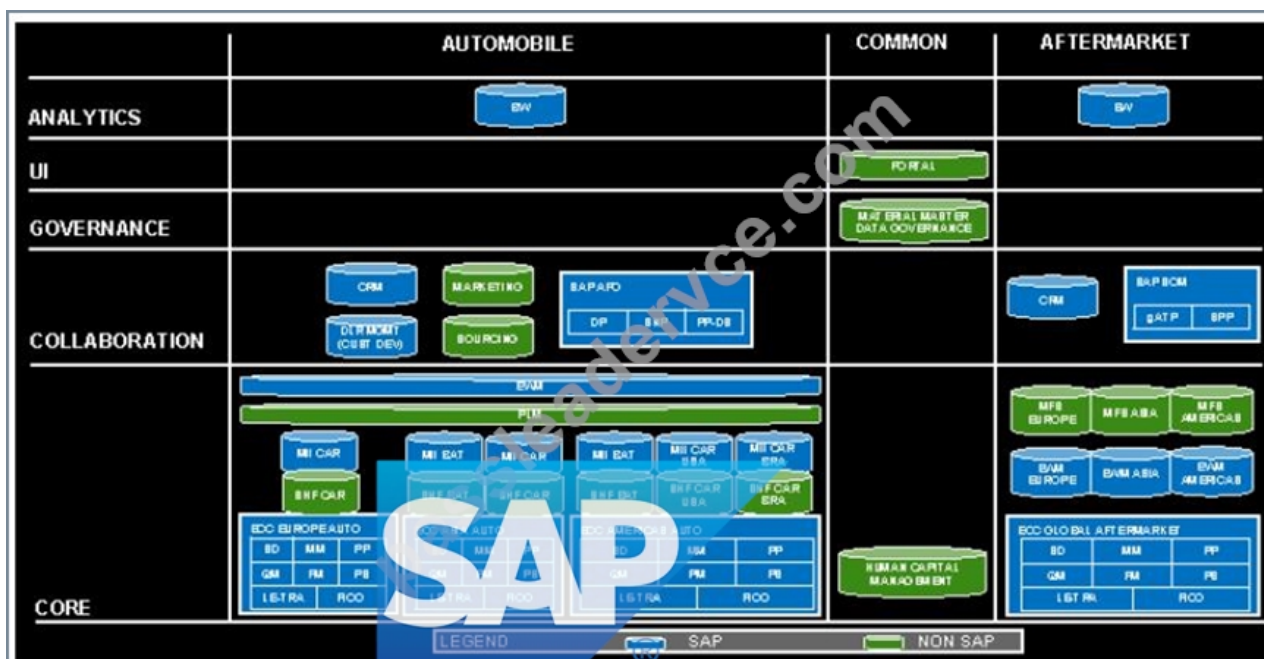
- o Dwindling in store footfall due to pandemic (for feature-based vehicle selection prior to test drive)

Extracts from CIO Interviews - IT Environment

Extracts from CIO Interviews - IT Environment Strategic Priorities - IT

- o Ease of usage
- o Ease of Maintenance
- o Total Cost of Ownership Optimization
- o Time to Value Acceleration
- o Transformation Status
- o Only at a conceptual stage - no planning done yet
- o Nascent architecture practice
- o Unclear on supported processes, required capabilities, applications, and transition path
- o Yet to identify, prioritize and sequence initiatives

As-Is Architecture



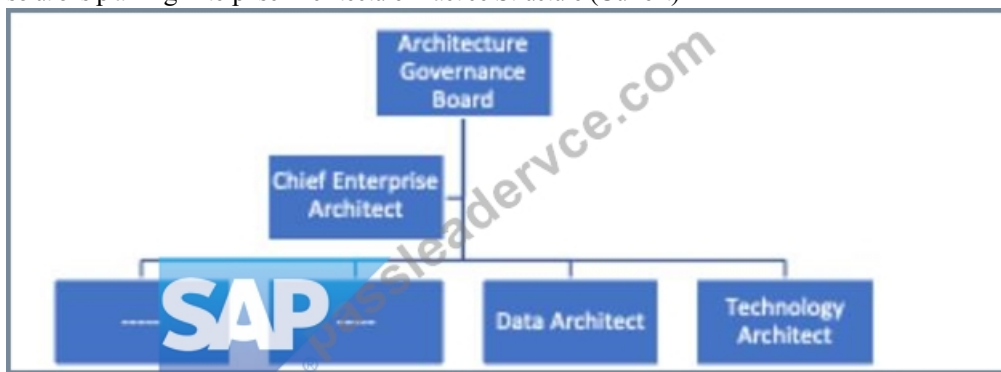
Wanderlust has a separate organization and setup for their Automobile and Aftermarket businesses o Wanderlust is reluctant to consider cloud for Core applications due to data privacy concerns, but are open for Collaboration applications o Automobile business started off in Europe and grew through acquisitions in Asia and Americas o Automobile business runs on three continental SAP ECC instances with inherited, disparate processes, which need to move to S/4HANA o Automobile business is also looking to harmonize their processes across the continents, adopt a seamless, transparent global supply chain for batteries and consolidate the continental instances into a global single instance, data regulations permitting o Automotive business uses a highly complex custom developed dealer management solution on ECC, which needs to be replaced o Automotive business uses SAP APO, which is nearing end of lifecycle and needs to be replaced by IBP (DP & SNP) & S/4HANA (PP-DS) o Automotive business uses several bespoke non-SAP applications, which are considered irreplaceable, except for the Marketing and Sourcing applications, which are expensive to maintain, seldom used and hence need to be replaced o Aftermarket business processes are largely uniform and handled through a single ECC instance which also should move to S/4HANA o Aftermarket business uses SAP SCM which is nearing end of lifecycle and needs to be replaced by S/4HANA AATP (gATP) and eSPP (SPP) Extracts from Interview with Enterprise Architect Enterprise Architecture Dimensions & Maturity o Wanderlust's Key EA Dimensions, their overall purpose and current maturity level

| Sl No | EA Dimension | Purpose | Current Status & Maturity Level |
|-------|---------------------------|--|---|
| 1 | Business-IT Alignment | Traceability between Business Drivers & IT Services | Only strategic objectives defined ● |
| 2 | Stakeholder Involvement | Stakeholders identification, Awareness & Engagement in EA | Only a few stakeholders identified ● |
| 3 | Action & Impact | Usage of EA in Sourcing & Investment Decisions & Business Strategy | EA involved in RFP decisions ● |
| 4 | Architecture Development | Development Methodology with Standards, & Reference Models | Nothing developed, methodology in place ● |
| 5 | Architecture Process | EA Creation, Maintenance, & Approval Processes | Ad hoc ● |
| 6 | Organization & Governance | Governance Organization Structure Approved by Senior Management | Governing body formed, team not yet ● |
| 7 | Communication | Documentation & Communication of EA Practice Decisions | Artefacts available but not known ● |
| 8 | People Enablement | Roles, Skills and RACI Definition of People Involved in EA | Role & skill set defined ● |

Top three priorities given the current maturity level, are as follows

o Stakeholder Involvement is the topmost priority, to create a Stakeholder Map that'll identify all key EA stakeholders within Wanderlust o Business-IT Alignment is also a top priority, to anchor every IT initiative to a Business Strategy Map, consisting of

clearly defined strategic business objectives, tangible goals and measurable value drivers o Architecture Development is the next priority, beginning with development of business architectures, followed by application architectures and finally opportunities & solutions planning Enterprise Architecture Practice Structure (Current)



Enterprise Architecture Principles

o Wanderlust's Enterprise Architecture Principles are a collection of crisp and precise one liners pertaining to business, application, information, integration, technology and security aspects of transformation o Some of the EA Principles in the repository are



These EA Principles serve as high level directional statements and long term guard rails to the above six aspects of transformation programs & projects o They should ideally correlate (many to many) with the Strategic Objectives, defined in the Business-IT alignment EA Dimension - this is yet to be done though

NEW QUESTION # 12

As part of the mapping of a Business Architecture to the Solution Architecture, an Environment & Location Diagram must be developed in the Technology Architecture phase. In this context, numerous architecture decisions have to be made. Among other things, you must check which SAP BTP services and which SAP SaaS solutions are available as part of the Solution Architecture in which data center of the desired hyperscaler. How do you go about this validation?

- A. I use the SAP Discovery Center to check in which data centers the respective SAP BTP services and the SAP SaaS solutions are available.
- **B. I use the SAP Discovery Center to check which of the selected SAP BTP services are offered by which hyperscaler. With help from the SAP Trust Center, I check in which data center the involved SAP SaaS solutions are available.**
- C. I use the SAP Business Accelerator Hub (api.sap.com) because it provides all the required information regarding SAP BTP service and SAP SaaS solution availability for each hyperscaler, in a central location.

Answer: B

Explanation:

Explanation

According to the SAP Discovery Center 1 and the SAP Trust Center 2, the steps involved in this validation are:

Use the SAP Discovery Center to check which of the selected SAP BTP services are offered by which hyperscaler. The SAP Discovery Center is a platform that provides access to SAP BTP services, events, and related resources, and helps you to implement your use cases on SAP BTP with step-by-step guidance and support from topic experts and SAP Community. In the Service Catalog section of the SAP Discovery Center, you can browse and filter the available SAP BTP services by category, region, or hyperscaler. You can also compare the features and pricing of different services, and learn how to use them in your projects.

Use the SAP Trust Center to check in which data center the involved SAP SaaS solutions are available.

The SAP Trust Center is a platform that provides information on cloud performance, security, privacy, and compliance. In the Certification and Compliance section of the SAP Trust Center, you can find certificates, reports, and attestations that show how SAP meets various industry standards and regulatory requirements. You can also filter the documents by solution, region, or hyperscaler, and download them for your reference.

The other options (A and C) are not correct for how to validate the availability of SAP BTP services and SAP SaaS solutions in the

desired hyperscaler's data center, because they either do not exist or do not provide the required information. For example: Option A is not correct because there is no such platform as SAP Business Accelerator Hub (api.sap.com) that provides all the required information regarding SAP BTP service and SAP SaaS solution availability for each hyperscaler. The correct name of the platform is SAP API Business Hub (api.sap.com), which is a platform that provides access to SAP APIs, events, and related resources, but it does not provide any information on the availability of SAP BTP services or SAP SaaS solutions for each hyperscaler or data center.

Option C is not correct because the SAP Discovery Center does not provide any information on the availability of SAP SaaS solutions for each hyperscaler or data center. The SAP Discovery Center only provides information on the availability of SAP BTP services for each hyperscaler or region, but not for specific data centers. To check the availability of SAP SaaS solutions for each data center, you need to use the SAP Trust Center instead.

NEW QUESTION # 13

The Wanderlust CIO, along with you, the Chief Enterprise Architect, are in the process of deciding on the application that can potentially replace your existing online marketing application, and you are trying to create the artifact Business Footprint Diagram for decision support (See table below) Which of the following combinations of goals, business capabilities, and applications would you recommend?

Note: There are 2 correct answers to this question,

A) 2-A-4 .
1-F-2

B) 1-D-3
1-H-2

C) 1-B-3
1-C-3

D) 2-E-3
2-G-3
2-B-3

| Goal | Business Capability |
|---|----------------------------------|
| 1. Run effective and high visibility campaigns (e.g. on social media) | A. Brand Management |
| | B. Social Media Management |
| | C. Marketing Campaign Management |
| | D. Loyalty Management |
| 2. Increase cross selling opportunities through online recommendations (e.g. accessories) | E. Recommendation Management |
| | F. Account Based Marketing |
| | G. Marketing Analytics |
| | H. Lead Management |

| Application |
|--|
| 1. SAP Omnichannel Promotional Pricing |
| 2. SAP Sales Cloud Version 2 |
| 3. SAP Emarsys Customer Engagement |
| 4. SAP Customer Data Cloud |

- A. 2-E-3,2-G-3,2-B-3
- B. 1-B-3,1-C-3
- C. 2-A-4,1-F-2
- D. 1-D-3,1-H-2

Answer: B,C

NEW QUESTION # 14

Green Elk & Company is the world's leading manufacturer of agricultural and forestry machinery. The former company slogan "Elk always runs" has recently been changed to "Elk feeds the world". One of Green Elk's strategic goals is to increase its revenue in the emerging markets of China, India, and other parts of Asia by 80% within three years. This requires a new business model that caters to significantly smaller farms with limited budgets. The CIO asks you, the Chief Enterprise Architect, to present an Architecture Roadmap that addresses the business challenge. According to the SAP Enterprise Architecture Framework, what is the best answer?

- A. Reuse the artifacts of previous phases as input for creating roadmaps. Focus on the Business Strategy Map with business capabilities and initiatives and define a business architecture roadmap
- B. Create a work breakdown structure to identify milestones, key deliverables and resources to outline the planned

transformation.

- C. Reuse the artifacts of previous phases as input for creating roadmaps. Start with a roadmap construction table, by defining initiatives and business outcomes, and detailing the business capabilities and solutions, to create two versions of a roadmap (outcome-based and application-specific)
- D. Reuse the artifacts of previous phases as input for creating roadmaps. Focus on the Target Architecture and define an application architecture roadmap.

Answer: C

Explanation:

The SAP Enterprise Architecture Framework (EAF) defines an Architecture Roadmap as a "high-level plan that describes the sequence of activities and deliverables required to achieve the target architecture." The roadmap should be based on the artifacts of the previous phases of the EAF, such as the Business Strategy Map, the Solution Concept, and the Baseline Business and Solution Architecture.

The first step in creating an Architecture Roadmap is to define the initiatives that will be needed to achieve the target architecture. These initiatives should be aligned with the business outcomes that the organization is trying to achieve.

The next step is to detail the business capabilities and solutions that will be needed to support the initiatives. This will help to ensure that the roadmap is realistic and achievable.

Finally, the roadmap should be created in two versions: an outcome-based roadmap and an application-specific roadmap. The outcome-based roadmap will show how the initiatives will achieve the business outcomes. The application-specific roadmap will show how the solutions will be implemented.

By following these steps, you can create an Architecture Roadmap that will help you to achieve your organization's strategic goals.

Here are some of the benefits of creating an Architecture Roadmap:

It can help you to visualize the sequence of activities and deliverables required to achieve your goals.

It can help you to identify dependencies between activities and deliverables.

It can help you to track progress and to make adjustments as needed.

It can help you to communicate your plans to stakeholders.

Therefore, an Architecture Roadmap can be a valuable tool for managing complex transformations.

According to the SAP Enterprise Architecture Framework, which is a methodology and toolset by the German multinational software company SAP that helps enterprise architects define and implement an architecture strategy for their organizations, the steps involved in creating an Architecture Roadmap are:

Reuse the artifacts of previous phases as input for creating roadmaps. The previous phases of the architecture development cycle are: architecture vision, business architecture, information systems architecture, and technology architecture. The artifacts of these phases provide the information and guidance for defining the scope, objectives, stakeholders, requirements, constraints, and solutions of the architecture project. Some of the artifacts that can be reused for creating roadmaps are: stakeholder map, business strategy map, solution strategy, solution context diagram, solution component diagram, solution application use-case diagram, solution value flow diagram, etc.

Start with a roadmap construction table, by defining initiatives and business outcomes, and detailing the business capabilities and solutions. A roadmap construction table is a tool that helps to structure and organize the information and elements that are needed to create a roadmap. It consists of four columns: initiatives, business outcomes, business capabilities, and solutions. Initiatives are the strategic actions or projects that are planned to achieve the business goals and drivers. Business outcomes are the measurable results or benefits that are expected from implementing the initiatives. Business capabilities are the skills, resources, and competencies that are required or need to mature to support the initiatives and outcomes. Solutions are the products or services that are used or delivered to enable the capabilities and outcomes.

Create two versions of a roadmap (outcome-based and application-specific). A roadmap is a visual representation of the transition architectures that will move the organization from its current state (baseline architecture) to its desired future state (target architecture). A roadmap shows the sequence and timing of the transition architectures, as well as the deliverables, resources, and risks associated with each transition architecture. There are two types of roadmaps that can be created: outcome-based and application-specific. An outcome-based roadmap focuses on the business outcomes that are achieved by implementing the transition architectures. An application-specific roadmap focuses on the solutions or applications that are implemented or changed by the transition architectures.

The other options (A, B, C) are not correct for how to present an Architecture Roadmap that addresses the business challenge because they either skip or misrepresent some of the steps in creating an Architecture Roadmap. For example:

Option A is not correct because it does not include reusing the artifacts of previous phases as input for creating roadmaps, which is an important step to ensure alignment and consistency with the architecture project. It also suggests creating a work breakdown structure instead of a roadmap construction table, which is not a tool in this framework.

Option B is not correct because it does not include creating two versions of a roadmap (outcome-based and application-specific), which is an important step to provide different perspectives and levels of detail for the roadmap. It also suggests focusing on the target architecture instead of the transition architectures, which is not a logical approach since the latter determine how to achieve the former.

Option C is not correct because it does not include starting with a roadmap construction table, which is an important step to

structure and organize the information and elements that are needed to create a roadmap. It also suggests focusing on the business strategy map instead of the initiatives and outcomes, which is not a sufficient level of detail for creating a roadmap.

NEW QUESTION # 15

For the next Architecture Board meeting, you need to determine the next steps required after the business, application/data and technology architecture designs have been created. What do you recommend?

- A. Reviewing Business Application/Data and Technology Architecture artifacts with stakeholders and signing off on first versions. Using Transition Architectures to build the Architecture Roadmap. Creating first drafts of the required work packages and the Project/Rollout plan.
- B. Establishing change management processes for the management of the business application/data and technology artifacts. Handing over the artifacts to the implementation partner and rolling out the project
- C. Finalizing the Business, Application/Data, and Technology Architecture artifacts. Building an Architecture Roadmap. Creating a first draft of the Project/Rollout Project plan.

Answer: A

Explanation:

After the business, application/data, and technology architecture designs have been created, it is vital to engage with stakeholders to review these artifacts and gain their sign-off, ensuring that the designs meet the business requirements and are aligned with the strategic direction of the company. Transition Architectures are an essential part of building the Architecture Roadmap as they provide interim 'target states' that enable the organization to move towards the final architecture in a controlled manner. Creating the initial drafts of the work packages and the project/rollout plan is necessary to commence the detailed planning for implementation. = This approach is documented within the SAP Enterprise Architecture development process, which underscores the importance of stakeholder engagement, Transition Architectures, and detailed planning for successful EA implementation. Relevant documents include "SAP Enterprise Architecture Framework" and "Transition Architecture Planning in SAP Environments."

NEW QUESTION # 16

.....

When you are studying for the P_SAPEA_2023 exam, maybe you are busy to go to work, for your family and so on. How to cost the less time to reach the goal? It's a critical question for you. Time is precious for everyone to do the efficient job. If you want to get good P_SAPEA_2023 prep guide, it must be spending less time to pass it. Exactly, our product is elaborately composed with major questions and answers. We are choosing the key from past materials to finish our P_SAPEA_2023 Guide Torrent. It only takes you 20 hours to 30 hours to do the practice. After your effective practice, you can master the examination point from the P_SAPEA_2023 exam torrent. Then, you will have enough confidence to pass it.

P_SAPEA_2023 Reliable Test Dumps: https://www.passleadervce.com/SAP-Certified-Professional/reliable-P_SAPEA_2023-exam-learning-guide.html

- Authoritative SAP Certification P_SAPEA_2023 Exam Cost and Useful P_SAPEA_2023 Reliable Test Dumps ☐ Open [www.testkingpass.com] enter ➡ P_SAPEA_2023 ☐ and obtain a free download ☐ P_SAPEA_2023 Reliable Exam Bootcamp
- P_SAPEA_2023 Authentic Exam Questions ☐ Exam P_SAPEA_2023 Preparation ☐ P_SAPEA_2023 Authentic Exam Questions ☐ Search for (P_SAPEA_2023) and easily obtain a free download on ☐ www.pdfvce.com ☐ ☐ Authorized P_SAPEA_2023 Pdf
- Free PDF Professional P_SAPEA_2023 - Certification SAP Certified Professional - SAP Enterprise Architect Exam Cost ☐ ☐ Go to website ☀ www.exam4labs.com ☐ ☀ ☐ open and search for ➡ P_SAPEA_2023 ⇐ to download for free ☐ Valid P_SAPEA_2023 Exam Tips
- P_SAPEA_2023 free questions - P_SAPEA_2023 torrent vce - P_SAPEA_2023 dumps torrent ☐ Search for ➡ P_SAPEA_2023 ☐ ☐ on ➤ www.pdfvce.com ☐ immediately to obtain a free download ☐ P_SAPEA_2023 Interactive Course
- Top Certification P_SAPEA_2023 Exam Cost 100% Pass | High-quality P_SAPEA_2023: SAP Certified Professional - SAP Enterprise Architect 100% Pass (M) Immediately open ➡ www.prepawaypdf.com ☐ and search for ➡ P_SAPEA_2023 ☐ to obtain a free download ➡ P_SAPEA_2023 Authentic Exam Questions
- Valid P_SAPEA_2023 Exam Tips ☐ P_SAPEA_2023 Certificate Exam ☐ P_SAPEA_2023 Interactive Course ☐ ➤ www.pdfvce.com ◀ is best website to obtain (P_SAPEA_2023) for free download ☐ Exam P_SAPEA_2023 Preparation
- Valid P_SAPEA_2023 Exam Materials ☐ Exam P_SAPEA_2023 Preparation ☐ Study P_SAPEA_2023 Center ↘

SAP Certified Professional - SAP Enterprise Architect Valid Exam Guide - P_SAPEA_2023 Free Pdf Vce - SAP Certified Professional - SAP Enterprise Architect Latest Practice Questions □ ➡ www.pdfvce.com □ is best website to obtain (P_SAPEA_2023) for free download ♣️Reliable P_SAPEA_2023 Exam Guide
Free PDF Professional P_SAPEA_2023 - Certification SAP Certified Professional - SAP Enterprise Architect Exam Cost □
□ 《 www.vce4dumps.com 》 is best website to obtain ➡ P_SAPEA_2023 □ for free download □Exam
P_SAPEA_2023 Bible
Certification P_SAPEA_2023 Exam Cost - Certification Success Guaranteed, Easy Way of Training - SAP SAP Certified Professional - SAP Enterprise Architect □ Simply search for 《 P_SAPEA_2023 》 for free download on □
www.pdfvce.com □ □Valid P_SAPEA_2023 Exam Materials
Exam P_SAPEA_2023 Bible □ Reliable P_SAPEA_2023 Exam Guide □ Lab P_SAPEA_2023 Questions □ Easily
obtain ► P_SAPEA_2023 ◀ for free download through 《 www.vceengine.com 》 □P_SAPEA_2023 Exam Learning
shortcourses.russellcollege.edu.au, myportal.utt.edu.tt, myportal.utt.edu.tt, myportal.utt.edu.tt, myportal.utt.edu.tt,
myportal.utt.edu.tt, myportal.utt.edu.tt, myportal.utt.edu.tt, myportal.utt.edu.tt, myportal.utt.edu.tt, myportal.utt.edu.tt,
myportal.utt.edu.tt, myportal.utt.edu.tt, myportal.utt.edu.tt, myportal.utt.edu.tt, myportal.utt.edu.tt, myportal.utt.edu.tt,
myportal.utt.edu.tt, myportal.utt.edu.tt, myportal.utt.edu.tt, myportal.utt.edu.tt, healthincheck.co.uk, www.stes.tyc.edu.tw,
stackblitz.com, 132.148.13.112, www.stes.tyc.edu.tw, wisdomvalleyedu.in, myportal.utt.edu.tt, myportal.utt.edu.tt,
myportal.utt.edu.tt, myportal.utt.edu.tt, myportal.utt.edu.tt, myportal.utt.edu.tt, myportal.utt.edu.tt, myportal.utt.edu.tt,
myportal.utt.edu.tt, myportal.utt.edu.tt, Disposable vapes

DOWNLOAD the newest PassLeaderVCE P_SAPEA_2023 PDF dumps from Cloud Storage for free:
https://drive.google.com/open?id=1I77G4_9Cb7m8lecESA1TTT3hapBx2NO0