

100% Pass 2026 Professional Microsoft DP-600: Implementing Analytics Solutions Using Microsoft Fabric Reliable Test Testking



2026 Latest Braindumpsqa DP-600 PDF Dumps and DP-600 Exam Engine Free Share: https://drive.google.com/open?id=1Hfx7aT1RXm4u4bQRJLo_bkuSdNImqTfG

Now is not the time to be afraid to take any more difficult certification exams. Our DP-600 learning quiz can relieve you of the issue within limited time. Our website provides excellent DP-600 learning guidance, practical questions and answers, and questions for your choice which are your real strength. You can take the DP-600 Training Materials and pass it without any difficulty. As long as you can practice DP-600 study guide regularly and persistently your goals of making progress and getting certificates smoothly will be realized just like a piece of cake.

Microsoft DP-600 Exam Syllabus Topics:

Topic	Details
Topic 1	<ul style="list-style-type: none">• Prepare data: This section of the exam measures the skills of engineers and covers essential data preparation tasks. It includes establishing data connections and discovering sources through tools like the OneLake data hub and the real-time hub. Candidates must demonstrate knowledge of selecting the appropriate storage type—lakehouse, warehouse, or eventhouse—depending on the use case. It also includes implementing OneLake integrations with Eventhouse and semantic models. The transformation part involves creating views, stored procedures, and functions, as well as enriching, merging, denormalizing, and aggregating data. Engineers are also expected to handle data quality issues like duplicates, missing values, and nulls, along with converting data types and filtering. Furthermore, querying and analyzing data using tools like SQL, KQL, and the Visual Query Editor is tested in this domain.

Topic 2	<ul style="list-style-type: none"> • Implement and manage semantic models: This section of the exam measures the skills of architects and focuses on designing and optimizing semantic models to support enterprise-scale analytics. It evaluates understanding of storage modes and implementing star schemas and complex relationships, such as bridge tables and many-to-many joins. Architects must write DAX-based calculations using variables, iterators, and filtering techniques. The use of calculation groups, dynamic format strings, and field parameters is included. The section also includes configuring large semantic models and designing composite models. For optimization, candidates are expected to improve report visual and DAX performance, configure Direct Lake behaviors, and implement incremental refresh strategies effectively.
Topic 3	<ul style="list-style-type: none"> • Maintain a data analytics solution: This section of the exam measures the skills of administrators and covers tasks related to enforcing security and managing the Power BI environment. It involves setting up access controls at both workspace and item levels, ensuring appropriate permissions for users and groups. Row-level, column-level, object-level, and file-level access controls are also included, alongside the application of sensitivity labels to classify data securely. This section also tests the ability to endorse Power BI items for organizational use and oversee the complete development lifecycle of analytics assets by configuring version control, managing Power BI Desktop projects, setting up deployment pipelines, assessing downstream impacts from various data assets, and handling semantic model deployments using XMLA endpoint. Reusable asset management is also a part of this domain.

>> DP-600 Reliable Test Testking <<

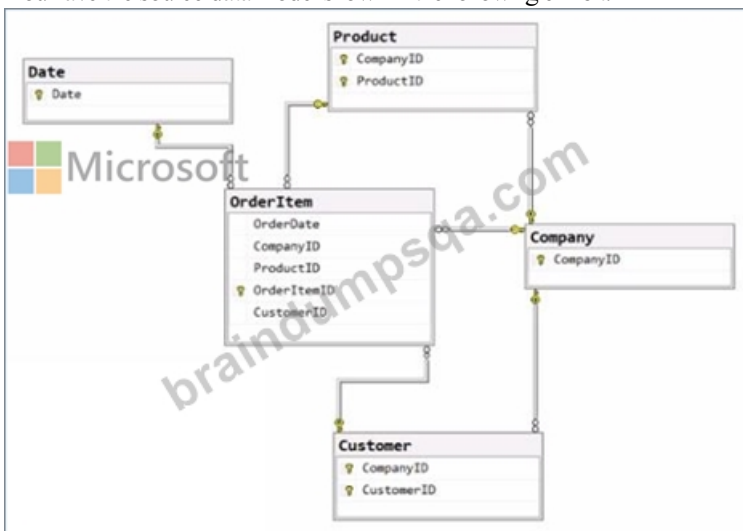
DP-600 Valid Practice Questions | DP-600 Reliable Cram Materials

There are some main features of our products and we believe you will be satisfied with our DP-600 test questions. Our study materials have enough confidence to provide the best DP-600 exam torrent for your study to pass it. With many years work experience, we have fast reaction speed to market change and need. In this way, we have the latest DP-600 Guide Torrent. You don't worry about that how to keep up with the market trend, just follow us.

Microsoft Implementing Analytics Solutions Using Microsoft Fabric Sample Questions (Q64-Q69):

NEW QUESTION # 64

You have the source data model shown in the following exhibit.

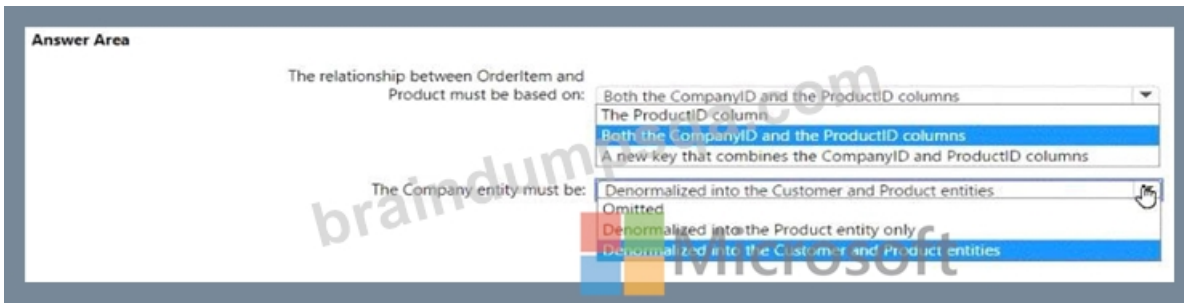


The primary keys of the tables are indicated by a key symbol beside the columns involved in each key.

You need to create a dimensional data model that will enable the analysis of order items by date, product, and customer.

What should you include in the solution? To answer, select the appropriate options in the answer area.

NOTE: Each correct selection is worth one point.



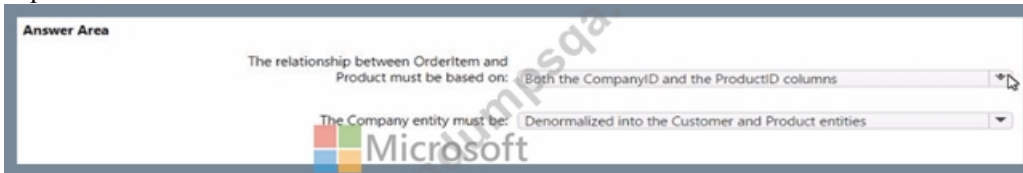
Answer:

Explanation:

Answer Area



Explanation:



The relationship between OrderItem and Product must be based on: Both the CompanyID and the ProductID columns
 The Company entity must be: Denormalized into the Customer and Product entities
 In a dimensional model, the relationships are typically based on foreign key constraints between the fact table (OrderItem) and dimension tables (Product, Customer, Date). Since CompanyID is present in both the OrderItem and Product tables, it acts as a foreign key in the relationship. Similarly, ProductID is a foreign key that relates these two tables. To enable analysis by date, product, and customer, the Company entity would need to be denormalized into the Customer and Product entities to ensure that the relevant company information is available within those dimensions for querying and reporting purposes.

References =

Dimensional modeling

Star schema design

NEW QUESTION # 65

You have a Fabric tenant that contains a lakehouse named Lakehouse1. Lakehouse1 contains a Delta table that has one million Parquet files.

You need to remove files that were NOT referenced by the table during the past 30 days. The solution must ensure that the transaction log remains consistent, and the ACID properties of the table are maintained.

What should you do?

- A. From OneLake file explorer, delete the files.
- **B. Run the VACUUM command.**
- C. Run the OPTIMIZE command and specify the V-order parameter.
- D. Run the OPTIMIZE command and specify the Z-order parameter.

Answer: B

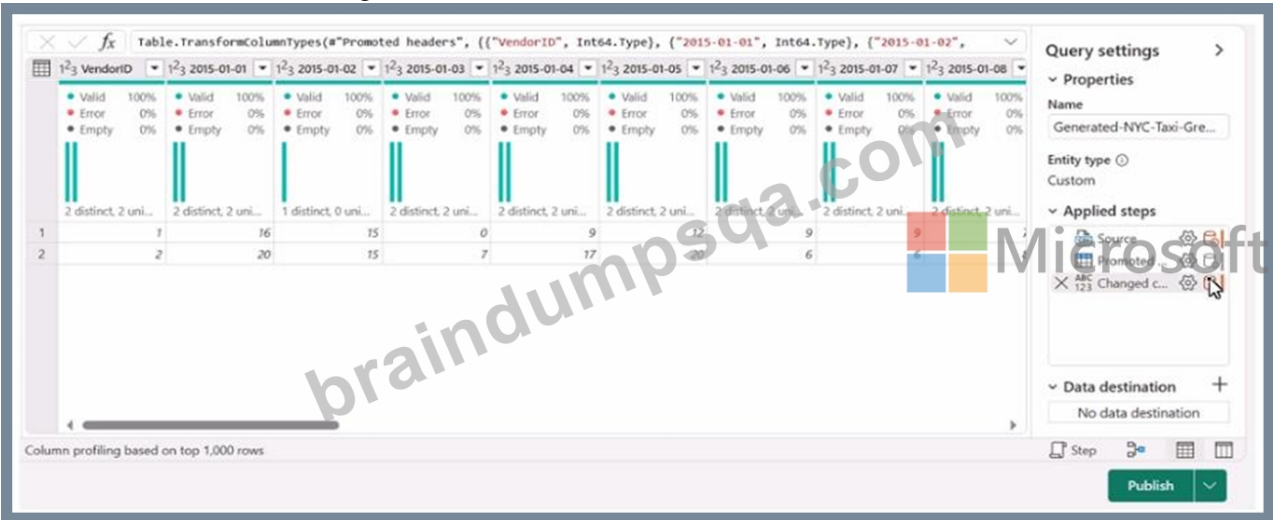
Explanation:

To remove files from a Delta table that are no longer referenced by the current version of the table, you should run the VACUUM command.

<https://learn.microsoft.com/en-us/fabric/data-engineering/lakehouse-table-maintenance>

NEW QUESTION # 66

You have a Fabric workspace named Workspace1 that contains a data flow named Dataflow1. Dataflow1 contains a query that returns the data shown in the following exhibit.



You need to transform the date columns into attribute-value pairs, where columns become rows.

You select the VendorID column.

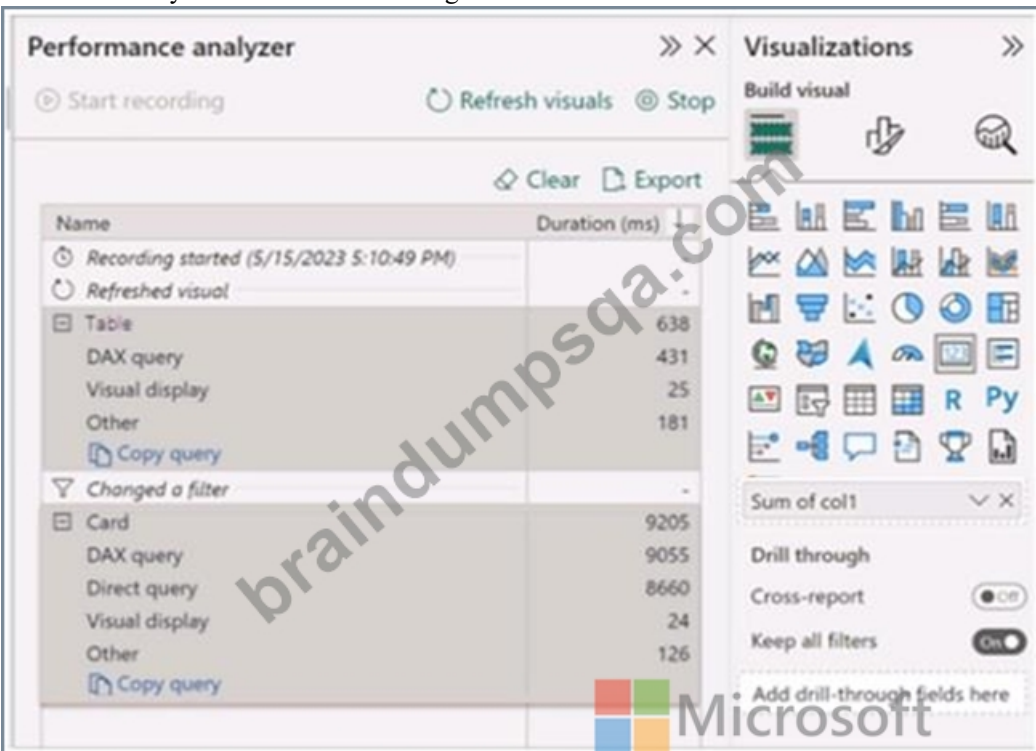
Which transformation should you select from the context menu of the VendorID column?

- A. Split column
- B. Unpivot other columns
- C. Remove other columns
- D. Group by
- E. Unpivot columns

Answer: E

NEW QUESTION # 67

You have a Microsoft Power BI report and a semantic model that uses Direct Lake mode. From Power BI Desktop, you open Performance analyzer as shown in the following exhibit.



Use the drop-down menus to select the answer choice that completes each statement based on the information presented in the graphic. NOTE: Each correct selection is worth one point.

Answer Area

The Direct Lake fallback behavior is set to [answer choice].

The query for the table visual is executed by using [answer choice].

Answer:

Explanation:
answer Area

The Direct Lake fallback behavior is set to [answer choice].

The query for the table visual is executed by using [answer choice].

Explanation:

The Direct Lake fallback behavior is set to: DirectQueryOnly

The query for the table visual is executed by using: DirectQuery

In the context of Microsoft Power BI, when using DirectQuery in Direct Lake mode, there is no caching of data and all queries are sent directly to the underlying data source. The Performance Analyzer tool shows the time taken for different operations, and from the options provided, it indicates that DirectQuery mode is being used for the visuals, which is consistent with the Direct Lake setting. DirectQueryOnly as the fallback behavior ensures that only DirectQuery will be used without reverting to import mode.

NEW QUESTION # 68

Hotspot Question

You have a Fabric tenant that contains a lakehouse named Lakehouse1. Lakehouse1 contains a table named Nyctaxi_raw.

Nyctaxi_raw contains the following table:

Name	Data type
pickupDateTime	Timestamp
passengerCount	Integer
fareAmount	Double
paymentType	String
tipAmount	Double

You create a Fabric notebook and attach it to Lakehouse1.

You need to use PySpark code to transform the data. The solution must meet the following requirements:

- Add a column named pickupDate that will contain only the date portion of pickupDateTime.
- Filter the DataFrame to include only rows where fareAmount is a positive number that is less than 100.

How should you complete the code? To answer, select the appropriate options in the answer area.

NOTE: Each correct selection is worth one point.

Answer Area



```
df = spark.read.format("delta").load("Tables/nyctaxi_raw")
```

```
df2= df.withColumnRenamed("pickupDate", df['tpepPickupDateTime'])
```

- df.columns
- df.select
- df.withColumn
- df.withColumnsRenamed

- .alias('date')
- .cast('date')
- .cast('pickupDate')
- .getField('date')

- .filter("fareAmount > 0 AND fareAmount < 100")
- .filter(col("fareAmount").contains("1..100"))
- .when(df.fareAmount > 0 AND fareAmount < 100)
- .where(df.fareAmount.isin([1,100]))

Answer:

Explanation:

Answer Area

```
df = spark.read.format("delta").load("Tables/nyctaxi_raw")
```

```
df2= df.withColumnRenamed("pickupDate", df['tpepPickupDateTime'])
```

- df.columns
- df.select
- df.withColumn
- df.withColumnsRenamed

- .alias('date')
- .cast('date')
- .cast('pickupDate')
- .getField('date')

- .filter("fareAmount > 0 AND fareAmount < 100")
- .filter(col("fareAmount").contains("1..100"))
- .when(df.fareAmount > 0 AND fareAmount < 100)
- .where(df.fareAmount.isin([1,100]))

NEW QUESTION # 69

.....

As long as you can form a positive outlook, which can aid you to realize your dreams through your constant efforts. Then our DP-600 learning questions will aid you to regain confidence and courage. So you will never regret to choose our DP-600 Study Materials. And we have help numerous of our customers achieved their dreams and live a better life. Just browser our websites and choose a suitable DP-600 practice guide for you.

DP-600 Valid Practice Questions: https://www.braindumpsqa.com/DP-600_braindumps.html

- Microsoft DP-600 PDF Questions Format Search for 《 DP-600 》 and download it for free on 「 www.examcollectionpass.com 」 website DP-600 Valid Test Pdf
- Reliable DP-600 Reliable Test Testking, Ensure to pass the DP-600 Exam Easily obtain ➡ DP-600 for free download through ➤ www.pdfvce.com Valid DP-600 Exam Tips
- Valid DP-600 Test Review Test DP-600 Preparation Valid DP-600 Dumps Download { DP-600 } for free by simply entering (www.testkingpass.com) website Dump DP-600 File
- DP-600 Cert Guide DP-600 Valid Test Pdf / DP-600 Cert Guide Simply search for ▷ DP-600 ◁ for free download on “ www.pdfvce.com ” DP-600 Best Preparation Materials

- Valid DP-600 Dumps □ DP-600 Flexible Testing Engine □ Exam DP-600 Guide Materials □ Search for 「 DP-600 」 and download it for free immediately on 《 www.validtorrent.com 》 □ Exam DP-600 Guide Materials
- Reliable DP-600 Mock Test □ DP-600 Latest Questions □ DP-600 Pass Test □ Open (www.pdfvce.com) and search for ▶ DP-600 ◀ to download exam materials for free □ Dump DP-600 File
- DP-600 Reliable Test Materials □ DP-600 Best Preparation Materials □ Valid DP-600 Dumps □ Download □ DP-600 □ for free by simply entering > www.practicevce.com □ website □ Reliable DP-600 Mock Test
- Valid DP-600 Exam Tips □ DP-600 Latest Questions □ Braindump DP-600 Free □ Download 「 DP-600 」 for free by simply entering ⇨ www.pdfvce.com □ website □ DP-600 Flexible Testing Engine
- Exam DP-600 Guide Materials □ Sample DP-600 Questions Pdf □ Test DP-600 Preparation □ Search for ▶ DP-600 ◀ and download it for free immediately on ⇨ www.testkingpass.com □ □ Test DP-600 Preparation
- DP-600 Pass Test □ Reliable DP-600 Mock Test □ DP-600 Pass Test □ Search for 「 DP-600 」 and easily obtain a free download on 「 www.pdfvce.com 」 □ Test DP-600 Preparation
- Reliable DP-600 Reliable Test Testking, Ensure to pass the DP-600 Exam z Download □ DP-600 □ for free by simply searching on ⇨ www.torrentvce.com □ □ DP-600 Flexible Testing Engine
- socialrator.com, bookmarkgenious.com, theresanxoul63647.blognody.com, thefairlist.com, bookmarkinglife.com, hannaimqx532724.blog-gold.com, dawudkenv500321.homewikia.com, poppiefcfo607603.bleepblogs.com, myportal.utt.edu.tt, myportal.utt.edu.tt, myportal.utt.edu.tt, myportal.utt.edu.tt, myportal.utt.edu.tt, myportal.utt.edu.tt, myportal.utt.edu.tt, myportal.utt.edu.tt, myportal.utt.edu.tt, myportal.utt.edu.tt, aliciavids025087.csublogs.com, Disposable vapes

DOWNLOAD the newest Braindumpsqa DP-600 PDF dumps from Cloud Storage for free: https://drive.google.com/open?id=1Hfx7aT1RXm4u4bQRJLo_bkuSdNImqTfG