

# Fortinet NSE 7 - LAN Edge 7.0 Practice Vce - NSE7\_LED-7.0 Training Material & Fortinet NSE 7 - LAN Edge 7.0 Study Guide



BONUS!!! Download part of PassLeaderVCE NSE7\_LED-7.0 dumps for free: <https://drive.google.com/open?id=1MQUfO0zpqTDuavvMMBeJvuUni1Mwi8yr>

Our specialists check whether the contents of NSE7\_LED-7.0 real exam are updated every day. If there are newer versions, they will be sent to users in time to ensure that users can enjoy the latest resources in the first time. In such a way, our NSE7\_LED-7.0 guide materials can have such a fast update rate that is taking into account the needs of users. Users using our NSE7\_LED-7.0 Study Materials must be the first group of people who come into contact with new resources. When you receive an update reminder from NSE7\_LED-7.0 practice questions, you can update the version in time and you will never miss a key message.

Fortinet NSE7\_LED-7.0 Exam is a comprehensive test that evaluates the candidate's ability to secure LAN edges. It tests the candidate's knowledge of networking concepts, security protocols, and threat management. NSE7\_LED-7.0 exam consists of multiple-choice questions that require the candidate to select the correct answer from a list of options.

To prepare for the Fortinet NSE7\_LED-7.0 certification exam, candidates can take advantage of a variety of resources provided by Fortinet, including online courses, self-paced learning modules, and practical labs. These resources cover all the topics that are included in the exam, and provide candidates with the knowledge and skills they need to succeed. Once certified, professionals can be confident in their ability to secure LAN Edge environments using Fortinet products, and can add this valuable certification to their professional credentials.

>> NSE7\_LED-7.0 Certification Test Answers <<

## Get Fortinet NSE7\_LED-7.0 Dumps For Quick Preparation [2026]

Our NSE7\_LED-7.0 guide torrent provides 3 versions and they include PDF version, PC version, APP online version. Each version boosts their strength and using method. For example, the PC version of Fortinet NSE 7 - LAN Edge 7.0 test torrent is suitable for the computers with the Window system. It can stimulate the real exam operation environment, stimulate the exam and undertake the time-limited exam. The download and installation has no limits for the amount of the computers and the users. The PDF version of NSE7\_LED-7.0 study torrent is convenient to download and print our NSE7\_LED-7.0 guide torrent and is suitable for browsing learning. If you use the PDF version you can print our Fortinet NSE 7 - LAN Edge 7.0 test torrent on the papers and it is convenient for you to take notes. You can learn our NSE7\_LED-7.0 study torrent at any time and place. You may choose the most convenient version to learn according to your practical situation.

## Fortinet NSE 7 - LAN Edge 7.0 Sample Questions (Q12-Q17):

## NEW QUESTION # 12

Refer to the exhibit.



Examine the network diagram and packet capture shown in the exhibit

The packet capture was taken between FortiGate and FortiAuthenticator and shows a RADIUS Access-Request packet sent by FortiSwitch to FortiAuthenticator through FortiGate. Why does the User-Name attribute in the RADIUS Access-Request packet contain the client MAC address?

- A. FortiSwitch is sending a RADIUS accounting message to FortiAuthenticator
- **B. FortiSwitch is authenticating the client using MAC authentication bypass**
- C. The client is performing user authentication
- D. The client is performing AD machine authentication

**Answer: B**

Explanation:

Explanation

According to the exhibit, the User-Name attribute in the RADIUS Access-Request packet contains the client MAC address of 00:0c:29:6a:2b:3d. This indicates that FortiSwitch is authenticating the client using MAC authentication bypass (MAB), which is a method of authenticating devices that do not support 802.1X by using their MAC address as the username and password. Therefore, option B is true because it explains why the User-Name attribute contains the client MAC address. Option A is false because AD machine authentication uses a computer account name and password, not a MAC address. Option C is false because user authentication uses a user name and password, not a MAC address. Option D is false because FortiSwitch is sending a RADIUS Access-Request message to FortiAuthenticator, not a RADIUS accounting message.

## NEW QUESTION # 13

Which two statements about MAC address quarantine by redirect mode are true? (Choose two)

- A. The quarantined device is moved to the quarantine VLAN
- B. It is the default mode for MAC address quarantine
- **C. The quarantined device is kept in the current VLAN**
- **D. The device MAC address is added to the Quarantined Devices firewall address group**

**Answer: C,D**

Explanation:

Explanation

According to the FortiGate Administration Guide, "MAC address quarantine by redirect mode allows you to quarantine devices by adding their MAC addresses to a firewall address group called Quarantined Devices.

The quarantined devices are kept in their current VLANs, but their traffic is redirected to a quarantine portal." Therefore, options B

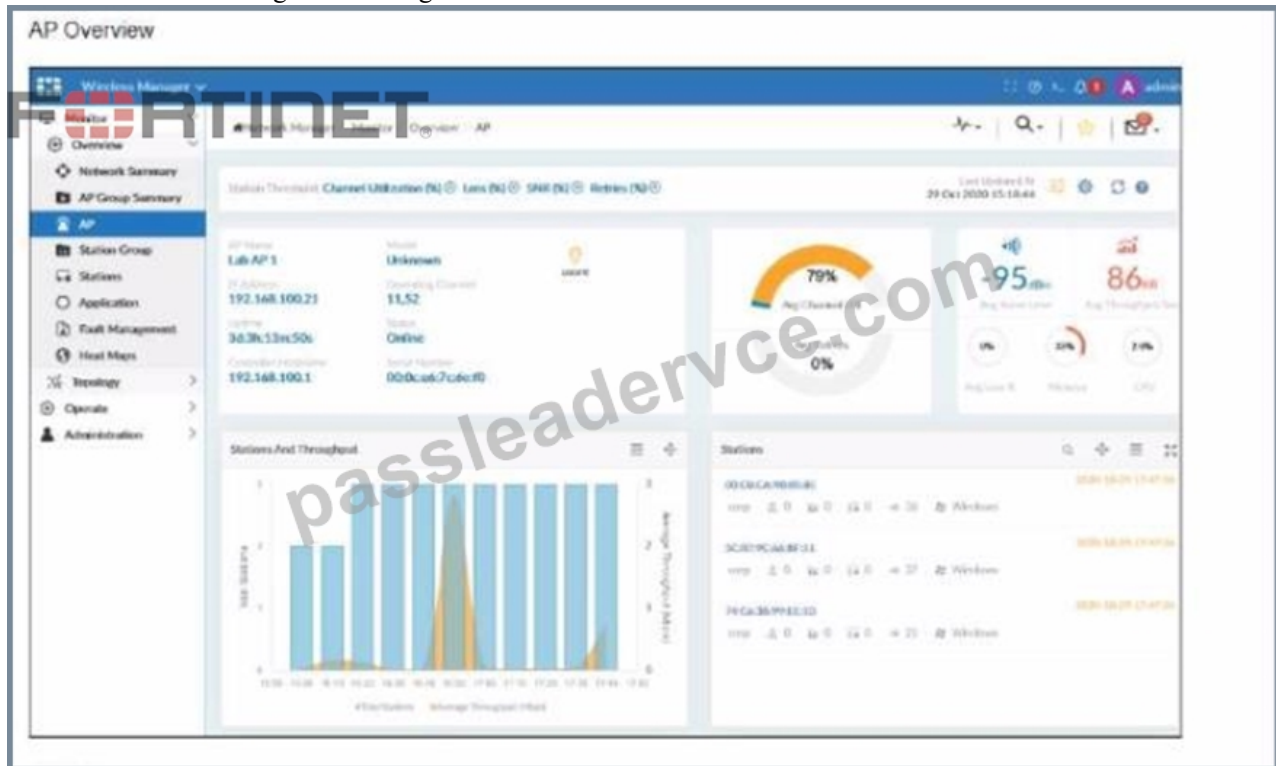
and D are true because they describe the statements about MAC address quarantine by redirect mode. Option A is false because the quarantined device is not moved to the quarantine VLAN, but rather kept in the current VLAN. Option C is false because redirect mode is not the default mode for MAC address quarantine, but rather an alternative mode that can be enabled by setting mac-quarantine-mode to redirect.

<https://docs.fortinet.com/document/fortiap/7.0.0/configuration-guide/734537/radius-authenticated-dynamic-vlan->

<https://docs.fortinet.com/document/fortigate/7.0.0/administration-guide/734537/mac-address-quarantine>

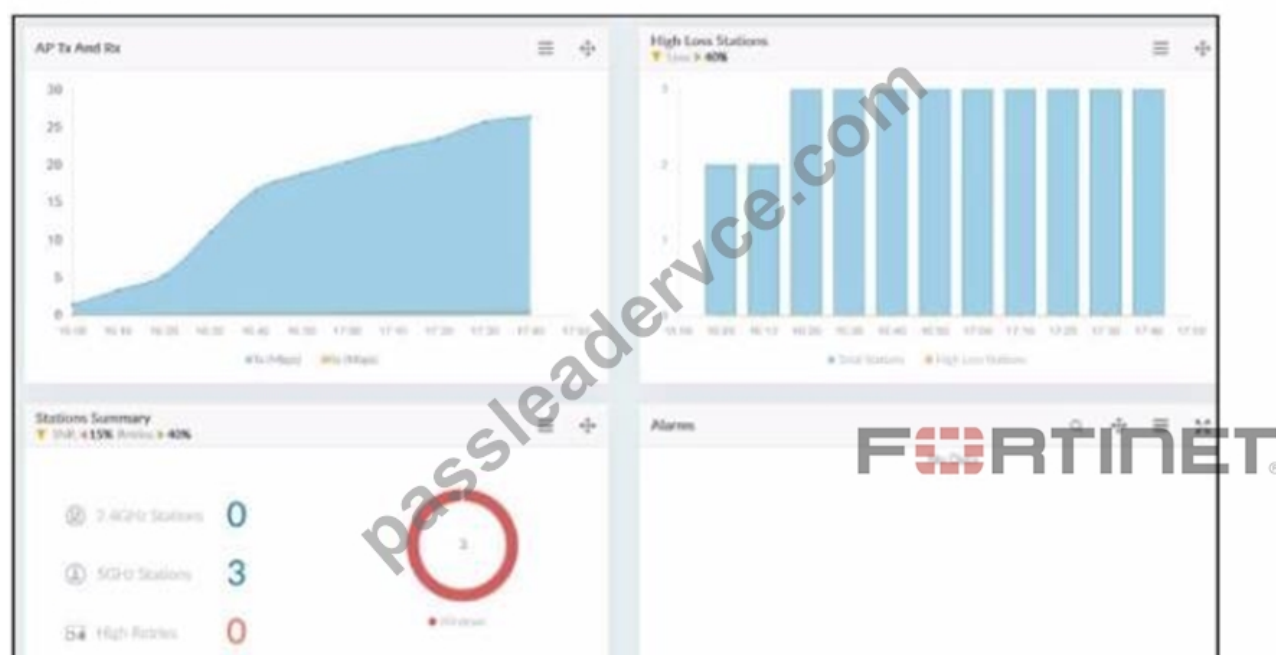
## NEW QUESTION # 14

Refer to the exhibits showing AP monitoring information.



The exhibits show the status of an AP in a small office building. The building is located at the edge of a campus, and users are reporting issues with wireless network performance.

### AP Status



Which configuration change would best improve the wireless network performance?

- A. Relocate the AP to be closer to the clients.
- B. Disable lower data rates on the 5 GHz interface.
- C. Enable band steering on the AP.
- D. Select an alternative channel for the 5 GHz interface.

**Answer: C**

#### NEW QUESTION # 15

Refer to the exhibit.



Examine the FortiSwitch security policy shown in the exhibit

If the security profile shown in the exhibit is assigned to all ports on a FortiSwitch device for 802.1X authentication which statement about the switch is correct?

- A. FortiSwitch will assign non-802.1X devices to the onboarding VLAN
- B. FortiSwitch cannot authenticate multiple devices connected to the same port
- C. All EAP messages will be terminated on FortiSwitch
- D. FortiSwitch will try to authenticate non-802.1X devices using the device MAC address as the username and password

**Answer: A**

Explanation:

According to the FortiSwitch Administration Guide, "If a device does not support 802.1X authentication, you can configure the switch to assign the device to an onboarding VLAN. The onboarding VLAN is a separate VLAN that you can use to provide limited network access to non-802.1X devices." Therefore, option C is true because it describes the behavior of FortiSwitch when the security profile shown in the exhibit is assigned to all ports. Option A is false because FortiSwitch can authenticate multiple devices connected to the same port using MAC-based or MAB-EAP modes. Option B is false because FortiSwitch will not try to authenticate non-802.1X devices using the device MAC address as the username and password, but rather use MAC authentication bypass (MAB) or EAP pass-through modes. Option D is false because all EAP messages will be terminated on FortiGate, not FortiSwitch, when using 802.1X authentication.

#### NEW QUESTION # 16

An administrator has configured an SSID in bridge mode for corporate employees. All APs are online and provisioned using default AP profiles. Employees are unable to locate the SSID to connect. Which two configurations can the administrator verify? (Choose two)

- A. Verify that the Block Intra-SSID Traffic (intra-vap-privacy) option in the SSID configuration is disabled
- B. Verify that the SSID is applied to an AP group that should be broadcasting the SSID
- C. Verify that the broadcast SSID option is enabled in the SSID configuration
- D. Verify that the SSID is manually applied on AP profiles for both 2.4 GHz and 5 GHz radios

**Answer: C,D**

Explanation:

<https://community.fortinet.com/t5/FortiGate/Technical-Tip-How-to-enable-and-disable-broadcast-of-SSID/ta-p/191840>

• • • • •

**NSE7\_LED-7.0 Exam Voucher:** [https://www.passleadervce.com/NSE-7-Network-Security-Architect/reliable-NSE7\\_LED-7.0-exam-learning-guide.html](https://www.passleadervce.com/NSE-7-Network-Security-Architect/reliable-NSE7_LED-7.0-exam-learning-guide.html)

- 2025 Latest PassLeaderVCE NSE7\_LED-7.0 PDF Dumps and NSE7\_LED-7.0 Exam Engine Free Share:  
<https://drive.google.com/open?id=1MOUf00zpqTDuavvMMBeJvuUnl1Mwi8yr>