

# Authorized UiPath-ADPv1 Pdf | Valuable UiPath-ADPv1 Feedback



DOWNLOAD the newest VerifiedDumps UiPath-ADPv1 PDF dumps from Cloud Storage for free: <https://drive.google.com/open?id=1Pk2VVvg9dceZXkZQ7de7bargyHdbxPnR>

We have applied the latest technologies to the design of our UiPath-ADPv1 test prep not only on the content but also on the displays. As a consequence you are able to keep pace with the changeable world and remain your advantages with our UiPath-ADPv1 training materials. Besides, you can consolidate important knowledge for you personally and design customized study schedule or to-do list on a daily basis. The last but not least, our after-sales service can be the most attractive project in our UiPath-ADPv1 Guide Torrent.

## UiPath UiPath-ADPv1 Exam Syllabus Topics:

Topic	Details
Topic 1	<ul style="list-style-type: none"><li>• Design and Development: This section covers designing workflows using sequences, flowcharts, and state machines, building reusable components with libraries, exception handling and debugging techniques, etc.</li></ul>
Topic 2	<ul style="list-style-type: none"><li>• UiPath Activities: In this section, the discussion is related to various UiPath activities for UI interaction, data manipulation, control flow, and more.</li></ul>
Topic 3	<ul style="list-style-type: none"><li>• Debugging and Testing: This section is about utilizing logging and debugging tools and adopting unit testing and test automation strategies.</li></ul>
Topic 4	<ul style="list-style-type: none"><li>• UiPath Studio Fundamentals: In this section, the focus is given to the understanding of Robotic Process Automation (RPA) concepts; it covers UiPath Studio and its components, Working with the UiPath user interface, project creation, management, and version control.</li></ul>

>> Authorized UiPath-ADPv1 Pdf <<

## Your Ultimate Resource Actual of UiPath UiPath-ADPv1 Questions

Our website is considered to be the top test seller of UiPath-ADPv1 practice materials, and gives you the best knowledge of the content of the syllabus of UiPath-ADPv1 preparation materials. They provide you with the best possible learning prospects by using minimal effort to satisfy the results beyond your expectations. Despite the intricacies of the nominal concept, the questions of UiPath-ADPv1 Exam Questions have been made suitable whatever level you are.

## UiPath (ADPv1) Automation Developer Professional Sample Questions (Q17-Q22):

### NEW QUESTION # 17

What method can be used to change the index of an existing column in a datatable?

- A. Move At
- B. SetColumnIndex
- C. SetIndex
- D. SetOrdinal

**Answer: D**

### NEW QUESTION # 18

To retrieve all Outlook emails with the word "UiPath" in the subject, which filtering property and filter schema should a developer use?

- A. Property: FilterByMessageIdsSchema: "@SQL="urn:schemas:httpmail:subject" like 'UiPath%'"
- B. Property: FilterSchema: "@SQL="urn:schemas:httpmail:subject" like '%UiPath%'"
- C. Property: FilterByMessageIdsSchema: "@SQL="urn:schemas:httpmail:subject" like '%UiPath%'"
- D. Property: FilterSchema: "@SQL="urn:schemas:httpmail:subject" like 'UiPath%'"

**Answer: B**

Explanation:

To retrieve all Outlook emails with the word "UiPath" in the subject, the developer should use the Filter property and the filter schema "@SQL="urn:schemas:httpmail:subject" like '%UiPath%'",. The Filter property allows the developer to specify a condition for retrieving the emails based on the email properties.

The filter schema is a string that follows the SQL syntax and uses the urn:schemas:httpmail namespace to access the email properties. The subject property is accessed by using "urn:schemas:httpmail:subject". The like operator is used to match the value of the subject property with a pattern that contains the word "UiPath".

The percent sign (%) is a wildcard that matches any sequence of characters. Therefore, the filter schema "@SQL="urn:schemas:httpmail:subject" like '%UiPath%'" will match any email that has the word "UiPath" anywhere in the subject. References: Get Outlook Mail Messages

### NEW QUESTION # 19

A developer implemented a process using the REFramework and an Orchestrator queue. The "OrchestratorQueueFolder" was defined in the "Config.xlsx" file, but the folder does not exist in Orchestrator. What is the behavior at runtime?

- A. A warning message stating that the queue folder is missing is logged, and then the process continues.
- B. The process throws an exception in the "Get Transaction Data" state because the queue folder is not found, and then the process is stopped.
- C. No exception is thrown and neither will a message be logged and the process continues.
- D. The process throws an exception in the "Process Transaction" state because the queue folder is not found, and then the process is stopped.

**Answer: B**

Explanation:

The REFramework (Robotic Enterprise Framework) is a template that provides a standard structure and best practices for building automation projects using UiPath Studio1. It uses the State Machine workflow type to handle different scenarios and exceptions in a robust and scalable way2. One of the states in the REFramework is the Get Transaction Data state, which is responsible for fetching the next transaction item from the Orchestrator queue and assigning it to a variable3. The Orchestrator queue is a data structure that stores multiple items that need to be processed by the robots4. The queue can be organized into folders, which are logical containers that help group and manage the queues and other Orchestrator entities5.

If a developer implemented a process using the REFramework and an Orchestrator queue, they need to specify the name of the

queue and the folder where it is located in the Config.xlsx file, which is an Excel workbook that stores the configuration settings and constants for the project<sup>6</sup>. The name of the queue should be entered in the Settings sheet, under the OrchestratorQueueName key, and the name of the folder should be entered in the Constants sheet, under the OrchestratorQueueFolder key<sup>6</sup>. These values are then read by the InitAllSettings workflow, which is invoked in the Init state of the REFramework, and assigned to the in\_Config argument, which is a dictionary that holds all the configuration data<sup>7</sup>.

At runtime, the Get Transaction Data state invokes the GetTransactionData workflow, which takes the in\_Config argument as an input and uses it to get the queue item from the Orchestrator queue<sup>8</sup>. The workflow uses the Get Queue Items activity, which requires the QueueName and FolderPath properties to be specified<sup>9</sup>. The QueueName property is set to in\_Config("OrchestratorQueueName").ToString, and the FolderPath property is set to in\_Config("OrchestratorQueueFolder").ToString<sup>8</sup>. If the folder specified in the Config.xlsx file does not exist in Orchestrator, the Get Queue Items activity will throw an exception with the message "Folder does not exist" and the process will be stopped<sup>10</sup>. Therefore, the correct answer is B. The process throws an exception in the "Get Transaction Data" state because the queue folder is not found, and then the process is stopped.

The other options are incorrect because:

Option A is incorrect because the process will not continue if the queue folder is missing. The Get Queue Items activity will fail and the exception will be caught by the Try Catch block in the GetTransactionData workflow, which will set the out\_TransactionItem argument to Nothing and the out\_TransactionID argument to "No more data"<sup>8</sup>. This will cause the transition condition from the Get Transaction Data state to the Process Transaction state to evaluate to False, and the transition condition from the Get Transaction Data state to the End Process state to evaluate to True<sup>3</sup>. The End Process state will invoke the SetTransactionStatus workflow, which will log the exception message and the process will be stopped<sup>11</sup>.

Option C is incorrect because an exception will be thrown and a message will be logged if the queue folder is missing. The exception will be thrown by the Get Queue Items activity, as explained above, and the message will be logged by the SetTransactionStatus workflow, which uses the Log Message activity to write the exception message to the Output panel and the Orchestrator logs<sup>11</sup>.

Option D is incorrect because the process will not reach the Process Transaction state if the queue folder is missing. The Process Transaction state is responsible for executing the business logic for each transaction item and invoking the SetTransactionStatus workflow to update the status of the item in the Orchestrator queue<sup>12</sup>. However, if the queue folder is missing, the Get Queue Items activity will throw an exception and the out\_TransactionItem argument will be set to Nothing, which will prevent the transition from the Get Transaction Data state to the Process Transaction state<sup>8,3</sup>.

References:

Studio - Robotic Enterprise Framework Template - UiPath Documentation Portal Studio - State Machines - UiPath Documentation Portal Studio - REFramework - UiPath Documentation Portal Orchestrator - Queues - UiPath Documentation Portal Orchestrator - Folders - UiPath Documentation Portal Studio - Config File - UiPath Documentation Portal Studio - InitAllSettings - UiPath Documentation Portal Studio - GetTransactionData - UiPath Documentation Portal Activities - Get Queue Items - UiPath Documentation Portal Orchestrator - Troubleshooting - UiPath Documentation Portal Studio - SetTransactionStatus - UiPath Documentation Portal Studio - Process Transaction - UiPath Documentation Portal

## NEW QUESTION # 20

A developer has defined a variable named "CurrentDate" of type Date Time. Which of the following expressions can be used to show what hour was 12 hours prior to the date from the variable?

- A. `DateTime.SubtractHours(CurrentDate, 12).Hour`
- B. `CurrentDate.SubtractHours(12).Hour`
- C. `CurrentDate.AddHours(-12).Hour`
- D. `DateTime.AddHours(CurrentDate, -12).Hour`

**Answer: C**

Explanation:

In UiPath Studio, you can use `DateTime` and `TimeSpan` variables to store and manipulate date and time values.

A `DateTime` variable represents a specific point in time, such as the current date and time, or a date in the past or future. A

`TimeSpan` variable represents a time interval, such as one hour, two days, or three weeks.

To show what hour was 12 hours prior to the date from the variable, you can use the `AddHours` method on the `DateTime` variable and pass a negative value. For example, if you have a `DateTime` variable called `CurrentDate` that stores a date and time value, you can write:

```
CurrentDate.AddHours(-12).Hour
```

This expression returns an integer value that is the hour component of the `DateTime` value that is 12 hours before the `CurrentDate` value. For example, if `CurrentDate` is 2024-02-08 10:51:49, then the expression returns

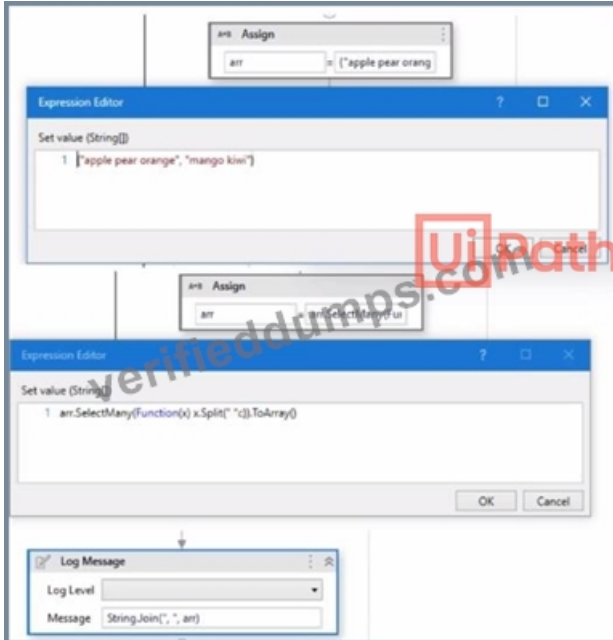
22.

The other options are not correct expressions for showing what hour was 12 hours prior to the date from the variable. Option A is invalid, because the `DateTime` class does not have an `AddHours` method. Option C is incorrect, because the `DateTime` variable

does not have a SubtractHours method. Option D is incorrect, because the DateTime class does not have a SubtractHours method. References: Variables - Date and Time Variables - UiPath Documentation Portal, DateTime.AddHours Method (System) - Microsoft Docs, Date and Time Arithmetic - UiPath Community Forum

### NEW QUESTION # 21

Given the following workflow:



What will be the output of the Log Message activity?

- A. "apple pear orange", "mango kiwi"
- B. apple, pear, orange, mango, kiwi
- C. apple pear orange, mango kiwi
- D. apple, pear, orange

**Answer: B**

### NEW QUESTION # 22

.....

Undergoing years of corrections and amendments, our UiPath-ADPv1 exam questions have already become perfect. They are promising practice materials with no errors. We are intransigent to the quality issue and you can totally be confident about their proficiency sternly. As indicator on your way to success, our practice materials can navigate you through all difficulties in your journey. Every challenge cannot be dealt like walk-ins, but our UiPath-ADPv1 simulating practice can make your review effective. That is why they are professional model in the line.

**Valuable UiPath-ADPv1 Feedback:** <https://www.verifeddumps.com/UiPath-ADPv1-valid-exam-braindumps.html>

- Valid UiPath-ADPv1 Exam Topics  UiPath-ADPv1 Latest Exam Cram  UiPath-ADPv1 Top Dumps  [www.exam4labs.com](http://www.exam4labs.com)  is best website to obtain  UiPath-ADPv1  for free download  UiPath-ADPv1 Reliable Exam Labs
- First-grade Authorized UiPath-ADPv1 Pdf - Trustable Source of UiPath-ADPv1 Exam  Easily obtain free download of « UiPath-ADPv1 » by searching on  [www.pdfvce.com](http://www.pdfvce.com)   UiPath-ADPv1 Sample Test Online
- UiPath-ADPv1 Latest Exam Cram  UiPath-ADPv1 Exam Study Solutions  UiPath-ADPv1 Valid Test Answers  Search on  [www.testkingpass.com](http://www.testkingpass.com)   for “UiPath-ADPv1 ” to obtain exam materials for free download  Valid Exam UiPath-ADPv1 Preparation
- First-grade Authorized UiPath-ADPv1 Pdf - Trustable Source of UiPath-ADPv1 Exam  Go to website { [www.pdfvce.com](http://www.pdfvce.com) } open and search for [ UiPath-ADPv1 ] to download for free  New UiPath-ADPv1 Exam Objectives
- Reliable UiPath-ADPv1 Study Notes  New UiPath-ADPv1 Exam Vce  Exam UiPath-ADPv1 Certification Cost

