

# PL-200 Certification Dump - PL-200 Discount



BTW, DOWNLOAD part of TorrentVCE PL-200 dumps from Cloud Storage: [https://drive.google.com/open?id=1cWHq22m8IDzMGNmBIsOtJ\\_BUhXbfmR](https://drive.google.com/open?id=1cWHq22m8IDzMGNmBIsOtJ_BUhXbfmR)

PL-200 exam materials contain all the questions and answers to pass PL-200 exam on first try. The Questions & answers are verified and selected by professionals in the field and ensure accuracy and efficiency throughout the whole Product. You will not need to collect additional questions and answers from any other source because this package contains every detail that you need to Pass PL-200 Exam.

The high quality and high efficiency of PL-200 study guide make it stand out in the products of the same industry. Our study materials have always been considered for the users. If you choose our PL-200 exam questions, you will become a better self. PL-200 actual exam want to contribute to your brilliant future. Our study materials are constantly improving themselves. If you have any good ideas, our study materials are very happy to accept them. PL-200 Exam Materials are looking forward to having more partners to join this family. We will progress together and become better ourselves.

>> **PL-200 Certification Dump** <<

## 100% Pass Latest PL-200 - Microsoft Power Platform Functional Consultant Certification Dump

Our PL-200 free demo provides you with the free renewal in one year so that you can keep track of the latest points happening in the world. As the questions of exams of our exam torrent are more or less involved with heated issues and customers who prepare for the exams must haven't enough time to keep trace of exams all day long, our PL-200 Practice Test can serve as a conducive tool for you make up for those hot points you have ignored. Apart from the advantage of free renewal in one year, our exam prep offers you constant discounts so that you can save a large amount of money concerning buying our PL-200 training materials.

One of the key benefits of the Microsoft PL-200 certification is that it helps individuals stand out in a competitive job market. As more organizations look to digitize their operations, the demand for skilled Microsoft Power Platform consultants is increasing. By earning the PL-200 Certification, candidates can demonstrate their proficiency in this important area and position themselves for new job opportunities.

## Microsoft Power Platform Functional Consultant Sample Questions (Q127-Q132):

### NEW QUESTION # 127

You are setting up Power Apps security for a company. The company has a CEO, two vice presidents, and 10 managers. Five support representatives report to each manager.

You set up Manager Hierarchy so managers are able to view data only for the representatives who report to them. The CEO must be able to view all data for everyone. All support representatives must be able to view customer information in each other's data across all managers.

You need to resolve issues that arise during testing.

What should you do? To answer, select the appropriate options in the answer area.

NOTE: Each correct selection is worth one point.

Issue	Action
Managers are unable to view all their report data.	<input type="checkbox"/> Add the manager's name to the representative's user record. <input type="checkbox"/> Change the Manager Hierarchy depth to 2. <input type="checkbox"/> Move the manager and reports to a separate business unit. <input type="checkbox"/> Set up a position in hierarchy.
The CEO is unable to view representative data but can view manager data.	<input type="checkbox"/> Add the CEO to the representative user record as a manager. <input type="checkbox"/> Change Manager Hierarchy depth to 3. <input type="checkbox"/> Create team security.
Five support representatives can view only their own data.	<input type="checkbox"/> Add the manager's name to the representative's user record. <input type="checkbox"/> Add users to field security. <input type="checkbox"/> Set up a position hierarchy.

**Answer:**

Explanation:

Issue	Action
Managers are unable to view all their report data.	<input type="checkbox"/> Add the manager's name to the representative's user record. <input type="checkbox"/> Change the Manager Hierarchy depth to 2. <input checked="" type="checkbox"/> Move the manager and reports to a separate business unit. <input type="checkbox"/> Set up a position in hierarchy.
The CEO is unable to view representative data but can view manager data.	<input type="checkbox"/> Add the CEO to the representative user record as a manager. <input type="checkbox"/> Change Manager Hierarchy depth to 3. <input type="checkbox"/> Create team security.
Five support representatives can view only their own data.	<input type="checkbox"/> Add the manager's name to the representative's user record. <input checked="" type="checkbox"/> Add users to field security. <input type="checkbox"/> Set up a position hierarchy.

Explanation:

Box 1: Move the manager and reports to a separate business unit.

Keep the Manager hierarchy, and put the reports to the appropriate business unit.

Note: Two security models can be used for hierarchies, the Manager hierarchy and the Position hierarchy.

With the Manager hierarchy, a manager must be within the same business unit as the report, or in the parent business unit of the report's business unit, to have access to the report's data. The Position hierarchy allows data access across business units. If you are a financial organization, you may prefer the Manager hierarchy model, to prevent managers' accessing data outside of their business units. However, if you are a part of a customer service organization and want the managers to access service cases handled in different business units, the Position hierarchy may work better for you.

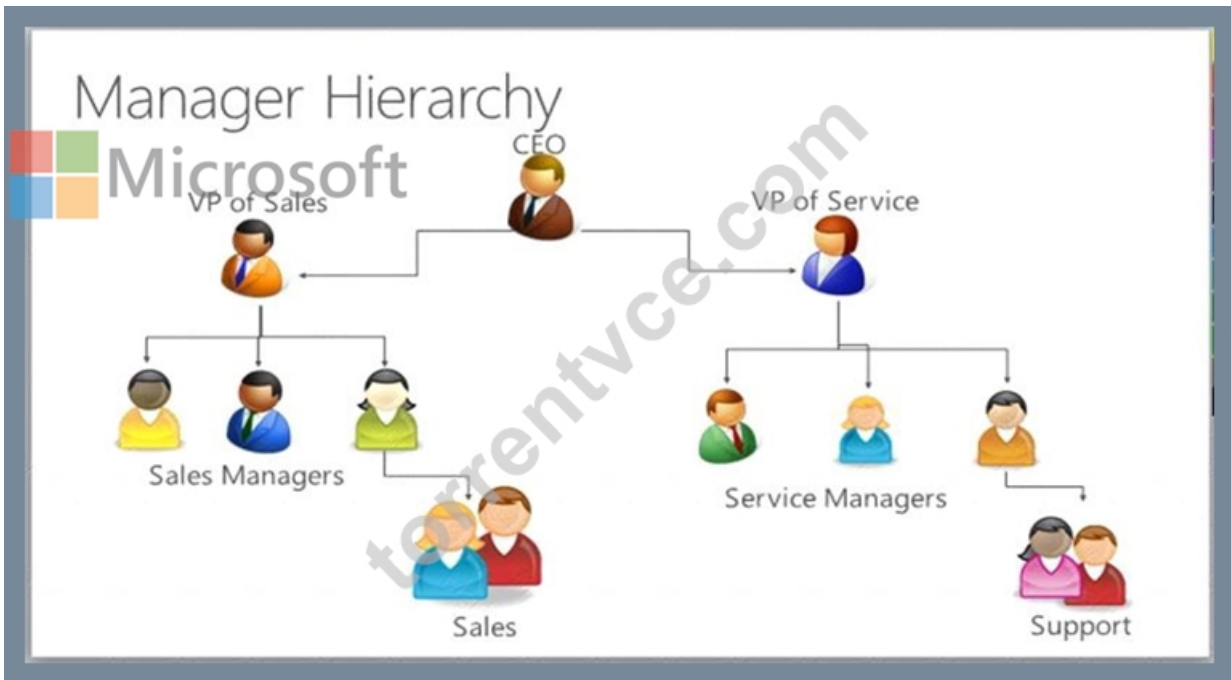
Box 2: Add the CEO to the representative user record as a manager.

Set up Manager and Position hierarchies

The Manager hierarchy is easily created by using the manager relationship on the system user record. You use the Manager (ParentsystemuserID) lookup field to specify the manager of the user.

Note: Depth is used to limit how many levels deep a manager has Read-only access to the data of their reports.

For example, if the depth is set to 2, the CEO can see the data of the VP of Sales, VP of Service and Sales and Service Managers. However, the CEO doesn't see the Sales data or the Support data.



Box 3: Add users to field security

Power Platform's field-level security lets you set which fields users can see or edit.

Reference: <https://docs.microsoft.com/en-us/power-platform/admin/hierarchy-security>

<https://docs.microsoft.com/en-us/power-platform/admin/field-level-security>

**NEW QUESTION # 128**

You need to store scanned consent forms. Where should you store the forms?

- A. Attachment
- B. Column
- C. SharePoint
- D. Notes

**Answer: B**

**NEW QUESTION # 129**

A company plans to automate the following manual processes by using Power Automate.

You need to identify UI flow types for the two business processes.

Process	Time to Complete	Comments
1	30 minutes	The user's device must remain unlocked when the business process runs. The user will be required to leave their device unattended in a secure setting while the business process runs so that the user can assist with other efforts.
2	45 minutes	The process must run after normal business hours. The device that runs the business process must remain unlocked when the business process is not running.

Which desktop flow type should you use? To answer, drag the appropriate desktop flow types to the correct business processes. Each desktop flow type may be used once, more than once, or not at all. You may need to drag the split bar between panes or scroll to view content.

NOTE: Each correct selection is worth one point.

**Desktop flow types**

Attended

Unattended

**Answer Area**

Business process	Desktop flow type
1	Desktop flow type
2	Desktop flow type

**Answer:**

Explanation:

The screenshot shows a configuration window for Desktop flow types. On the left, under 'Desktop flow types', there are two buttons: 'Attended' and 'Unattended'. On the right, under 'Business process', there are two rows: '1' and '2'. For each row, there is a 'Desktop flow type' dropdown menu. In row 1, 'Attended' is selected. In row 2, 'Unattended' is selected. The Microsoft logo is visible at the bottom center.

### NEW QUESTION # 130

Hotspot Question

You manage the Dynamics 365 environment for a company.

You need to ensure that there are no leads for a customer before you create a new opportunity for the customer.

How can you use duplicate detection rules to achieve this goal? To answer, select the appropriate options in the answer area.

NOTE: Each correct selection is worth one point.

**Duplicate detection rule criteria**

	Value
Base record type	<ul style="list-style-type: none"><li>Lead</li><li>Account</li><li>Opportunity</li></ul>
Base record field	<ul style="list-style-type: none"><li>Topic</li><li>Account</li><li>Originating Lead</li></ul>

Answer:

Explanation:

**Duplicate detection rule criteria**

	Value
Base record type	<ul style="list-style-type: none"><li>Lead</li><li>Account</li><li>Opportunity</li></ul>
Base record field	<ul style="list-style-type: none"><li>Topic</li><li>Account</li><li>Originating Lead</li></ul>

Explanation:

During the Opportunity creation should activate the Duplicate Detection rule, and check on related Customer (Account) if there are related lead to that Account.

### NEW QUESTION # 131

A company is creating a canvas app and a model-driven app to manage their customer accounts.

The canvas app requires a business rule to set the Business Type column to large if the customer size is greater than a specific currency value.

The model-driven app requires a business rule to recommend the account rating be re-evaluated when the account goes on credit hold for this app only.

You need to configure the scope for the business rules.

Which scope should you use? To answer, drag the appropriate scopes to the correct business rules. Each scope may be used once, more than once, or not at all. You may need to drag the split bar between panes or scroll to view content.

NOTE: Each correct selection is worth one point.

Scopes	Answer Area	Scope
<input type="text" value="All forms"/>	<b>Business rule</b> Business Type column setting for customer size Account rating re-evaluation	<input type="text"/>
<input type="text" value="Specific form"/>		<input type="text"/>
<input type="text" value="Table"/>		

**Answer:**

Explanation:

Scopes	Answer Area	Scope
<input type="text" value="All forms"/>	<b>Business rule</b> Business Type column setting for customer size Account rating re-evaluation	<input type="text" value="Table"/>
<input type="text" value="Specific form"/>		<input type="text" value="Specific form"/>
<input type="text" value="Table"/>		

Explanation

Box 1: Table

The canvas app requires a business rule to set the Business Type column to large if the customer size is greater than a specific currency value.

Scope the business rule to Entity (Table).

Box 2: Specific form

The model-driven app requires a business rule to recommend the account rating be re-evaluated when the account goes on credit hold for this app only.

For Model

The scope of the business rule determines which forms the business rule will be applied. You set the scope, according to the following:

If you select this item...

The scope is set to...

Entity- The table and all forms for the table

All Forms- All forms for the table

Specific form (account Main Form, for example) - Just that form

Reference: <https://debajmccrm.com/business-rules-in-powerapps-canvas-apps/>

<https://docs.microsoft.com/en-us/power-apps/maker/model-driven-apps/create-business-rules-recommendations->

## NEW QUESTION # 132

.....

Maybe you will meet some difficult or problems when you prepare for your PL-200 exam, you even want to give it up. It is no exaggeration to say that our study material is the most effective product for candidates to prepare for their exam. Because PL-200 exam torrent can help you to solve all the problems encountered in the learning process, PL-200 Practice Test will provide you with very flexible learning time so that you can easily pass the exam. At the same time, if you have any questions during the trial period of PL-200 quiz guide, you can feel free to communicate with our staffs, and we will do our best to solve all the problems for you.

**PL-200 Discount:** <https://www.torrentvce.com/PL-200-valid-vce-collection.html>

- Eminent PL-200 Training Materials: Microsoft Power Platform Functional Consultant exhibit the most accurate Exam Questions - [www.troytecdumps.com](http://www.troytecdumps.com)  Open  [www.troytecdumps.com](http://www.troytecdumps.com)  and search for  PL-200   to download exam materials for free  PL-200 Test Sample Online

- Professional PL-200 Certification Dump bring you Realistic PL-200 Discount for Microsoft Microsoft Power Platform Functional Consultant ☐ Download { PL-200 } for free by simply entering « [www.pdfvce.com](http://www.pdfvce.com) » website ☐ Latest PL-200 Dumps Free
- Get Success in the Upcoming Microsoft PL-200 Exam with Confidence ☐ Search for { PL-200 } and download it for free on 【 [www.torrentvce.com](http://www.torrentvce.com) 】 website ☐ PL-200 Updated Testkings
- Latest PL-200 Dumps Free ☐ PL-200 Best Practice ☐ PL-200 Latest Examprep ☐ Open ➡ [www.pdfvce.com](http://www.pdfvce.com) ☐ and search for ➡ PL-200 ☐☐☐ to download exam materials for free ☐ PL-200 Certification Cost
- Valid PL-200 Exam Format ☐ PL-200 Valid Braindumps ☐ PL-200 Test Guide ☐ Search for ☐ PL-200 ☐ and obtain a free download on 【 [www.vceengine.com](http://www.vceengine.com) 】 ☐ PL-200 Certification Cost
- Get Success in the Upcoming Microsoft PL-200 Exam with Confidence ☐ Open ➡ [www.pdfvce.com](http://www.pdfvce.com) ☐ and search for { PL-200 } to download exam materials for free ☐ PL-200 Test Guide
- Professional PL-200 Certification Dump bring you Realistic PL-200 Discount for Microsoft Microsoft Power Platform Functional Consultant ☐ Simply search for ( PL-200 ) for free download on ☐ [www.vceengine.com](http://www.vceengine.com) ☐ ☐ Valid PL-200 Exam Format
- Get Success in the Upcoming Microsoft PL-200 Exam with Confidence ✓ Download ☐ PL-200 ☐ for free by simply searching on ▷ [www.pdfvce.com](http://www.pdfvce.com) ◁ ☐ New PL-200 Exam Testking
- Quiz 2026 Microsoft High-quality PL-200: Microsoft Power Platform Functional Consultant Certification Dump ☐ The page for free download of ☐ PL-200 ☐ on ☐ [www.examcollectionpass.com](http://www.examcollectionpass.com) ☐ will open immediately ◀ New PL-200 Exam Testking
- PL-200 Actual Exam Dumps ☐ PL-200 Frequent Updates ☐ Latest PL-200 Test Cram ☐ « [www.pdfvce.com](http://www.pdfvce.com) » is best website to obtain ➡ PL-200 ☐ for free download ☐ PL-200 Frequent Updates
- PL-200 Best Practice ☐ PL-200 Test Dumps Free ☐ PL-200 Reliable Test Preparation ☐ Go to website ▶ [www.prepawayete.com](http://www.prepawayete.com) ◀ open and search for ▶ PL-200 ☐ to download for free ☐ PL-200 Valid Braindumps
- [aliviariac995652.bloggactif.com](http://aliviariac995652.bloggactif.com), [sociallytraffic.com](http://sociallytraffic.com), [www.stes.tyc.edu.tw](http://www.stes.tyc.edu.tw), [www.stes.tyc.edu.tw](http://www.stes.tyc.edu.tw), [nikolasnqnd199060.birderswiki.com](http://nikolasnqnd199060.birderswiki.com), [digibookmarks.com](http://digibookmarks.com), [online.citininstitute.org](http://online.citininstitute.org), [www.stes.tyc.edu.tw](http://www.stes.tyc.edu.tw), [jasperhxjs539110.blogripley.com](http://jasperhxjs539110.blogripley.com), [saadvxab526081.csublogs.com](http://saadvxab526081.csublogs.com), Disposable vapes

BONUS!!! Download part of TorrentVCE PL-200 dumps for free: [https://drive.google.com/open?id=1cWHq22m8IDzMGNmBIsOtJ\\_BUhXbfmR](https://drive.google.com/open?id=1cWHq22m8IDzMGNmBIsOtJ_BUhXbfmR)