

# SC-300 Test Sample Questions - Study SC-300 Center

Latest Version: 11.0

## Question: 1

You need to meet the authentication requirements for leaked credentials. What should you do?

- A. Enable federation with PingFederate in Azure AD Connect.
- B. Configure Azure AD Password Protection.
- C. Enable password hash synchronization in Azure AD Connect.
- D. Configure an authentication method policy in Azure AD.

Answer: C

Reference:

<https://docs.microsoft.com/en-us/azure/security/fundamentals/steps-secure-identity>

## Question: 2

You need to configure the MFA settings for users who connect from the Boston office. The solution must meet the authentication requirements and the access requirements. What should you configure?

- A. named locations that have a private IP address range
- B. named locations that have a public IP address range
- C. trusted IPs that have a public IP address range
- D. trusted IPs that have a private IP address range

Answer: C

Reference:

<https://docs.microsoft.com/en-us/azure/active-directory/conditional-access/location-condition>  
Location offer your country set, IP ranges MFA trusted IP and corporate network VPN gateway IP address. This is the public IP address of the VPN device for your on-premises network. The VPN device requires an IPv4 public IP address. Specify a valid public IP address for the VPN device to which you want to connect. It must be reachable by Azure Client Address space: List the IP address ranges that you want routed to the local on-premises network through this gateway. You can add multiple address space ranges. Make sure that the ranges you specify here do not overlap with ranges of other networks your virtual network connects to, or with the address ranges of the virtual network itself.

## Question: 3

P.S. Free 2026 Microsoft SC-300 dumps are available on Google Drive shared by NewPassLeader:  
[https://drive.google.com/open?id=1x2syjQWlcmkC1Zx8-au-djQln9LjG\\_Z](https://drive.google.com/open?id=1x2syjQWlcmkC1Zx8-au-djQln9LjG_Z)

Our worldwide after sale staff on the SC-300 exam questions will be online and reassure your rows of doubts as well as exclude the difficulties and anxiety with all the customers. Just let us know your puzzles on SC-300 study materials and we will figure out together. We can give you suggestion on SC-300 training engine 24/7, as long as you contact us, no matter by email or online, you will be answered quickly and professionally!

Microsoft SC-300 Certification Exam is designed for professionals who are responsible for managing and configuring Identity and Access solutions in Microsoft Azure. Microsoft Identity and Access Administrator certification exam validates the skills and knowledge required to design and implement secure access solutions in cloud and hybrid environments. SC-300 Exam aims to test the candidates' ability to manage identity, access, governance, and compliance for Microsoft Azure applications and services.

>> SC-300 Test Sample Questions <<

## Study SC-300 Center & SC-300 Reliable Exam Camp

The passing rate of our products is the highest. Many candidates can also certify for our Microsoft SC-300 study materials. As long as you are willing to trust our Microsoft SC-300 Preparation materials, you are bound to get the Microsoft SC-300 certificate. Life needs new challenge. Try to do some meaningful things.

## Microsoft Identity and Access Administrator Sample Questions (Q274-Q279):

NEW QUESTION # 274

You have an Azure Active Directory (Azure AD) tenant that contains the objects shown in the following table.

Name	Type	Directly assigned license
User1	User	None
User2	User	Microsoft Office 365 Enterprise E5
Group1	Security group	Microsoft Office 365 Enterprise E5
Group2	Microsoft 365 group	None
Group3	Mail-enabled security group	None

Which objects can you add as members to Group3?

- A. User2 and Group2 only
- B. User2, Group1, and Group2 only
- C. User2 only
- D. User1 and User2 only
- E. User1, User2, Group1 and Group2

**Answer: C**

Explanation:

Reference:

<https://bitsizedbytes.wordpress.com/2018/12/10/distribution-security-and-office-365-groups-nesting/>

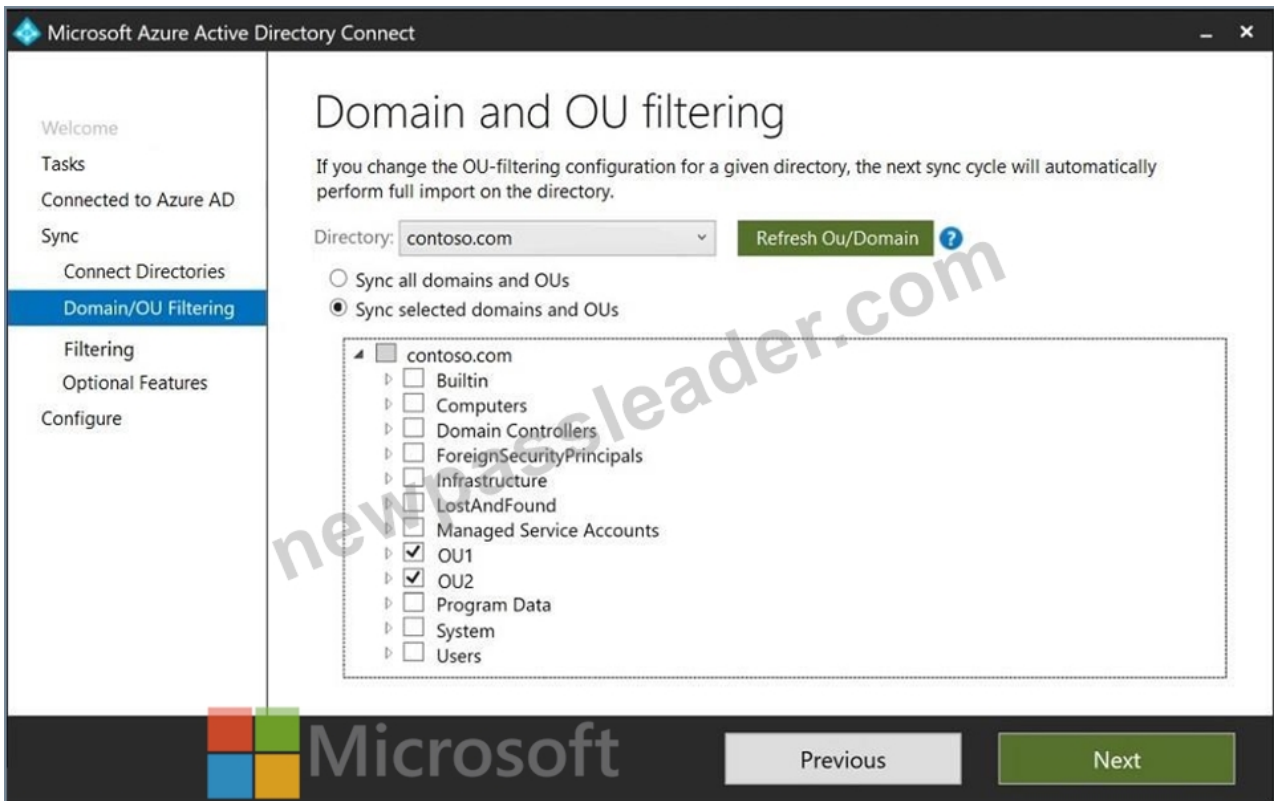
### NEW QUESTION # 275

Hotspot Question

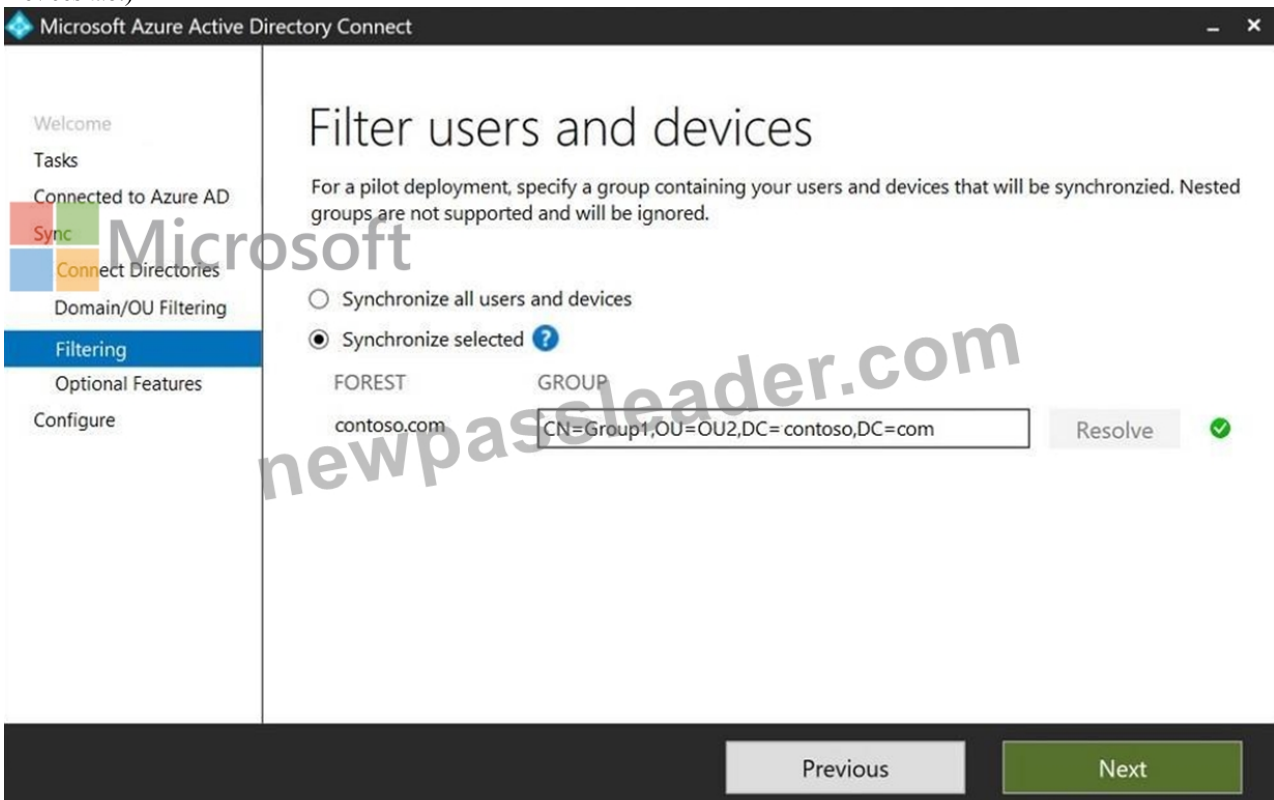
Your network contains an on-premises Active Directory domain named contoso.com. The domain contains the objects shown in the following table.

Name	Type	in organizational unit (OU)	Description
User1	User	OU1	User1 is a member of Group1.
User2	User	OU1	User2 is not a member of any groups.
Group1	Security group	OU2	User1 and Group2 are members of Group1.
Group2	Security group	OU1	Group2 is a member of Group1.

You install Azure AD Connect. You configure the Domain and OU filtering settings as shown in the Domain and OU Filtering exhibit. (Click the Domain and OU Filtering tab.)




You configure the Filter users and devices settings as shown in the Filter Users and Devices exhibit. (Click the Filter Users and Devices tab.)



For each of the following statements, select Yes if the statement is true. Otherwise, select No.

**Answer Area**

Statements	Yes	No
User1 syncs to Azure AD.	<input type="radio"/>	<input type="radio"/>
User2 syncs to Azure AD.	<input type="radio"/>	<input type="radio"/>
Group2 syncs to Azure AD.	<input type="radio"/>	<input type="radio"/>




**Answer:**

**Explanation:**

**Answer Area**

Statements	Yes	No
User1 syncs to Azure AD.	<input checked="" type="radio"/>	<input type="radio"/>
User2 syncs to Azure AD.	<input type="radio"/>	<input checked="" type="radio"/>
Group2 syncs to Azure AD.	<input checked="" type="radio"/>	<input type="radio"/>



**Explanation:**

Only direct members of Group1 are synced. Group2 will sync as it is a direct member of Group1 but the members of Group2 will not sync.

**Reference:**

<https://docs.microsoft.com/en-us/azure/active-directory/hybrid/how-to-connect-install-custom>

### NEW QUESTION # 276


You need to create the LWGroup1 group to meet the management requirements.

How should you complete the dynamic membership rule? To answer, drag the appropriate values to the correct targets. Each value may be used once, more than once, or not at all. You may need to drag the split bar between panes or scroll to view content.

NOTE: Each correct selection is worth one point.

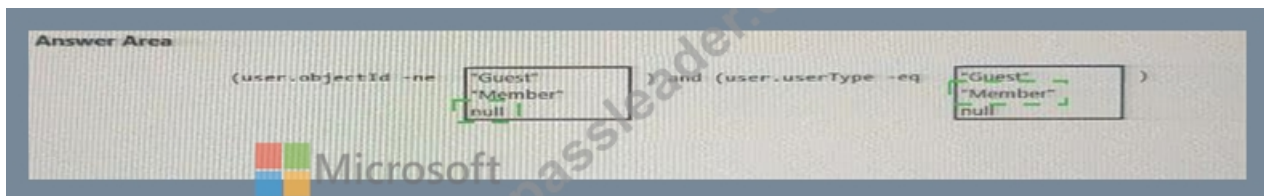
**Answer Area**

```
(user.objectId -ne  ) and (user.userType -eq )
```



**Answer:**

**Explanation:**



Explanation

Null

"Member"

Topic 2, A Datum Corp Overview

A Datum Corporation is a consulting company in Montreal.

A Datum recently acquired a Vancouver-based company named Litware, Inc.

A Datum Environment

The on-premises network of A Datum contains an Active Directory Domain Services (AD DS) forest named adatum.com.

A Datum has a Microsoft 365 E5 subscription. The subscription contains a verified domain that syncs with the adatum.com AD DS domain by using Azure AD Connect. A Datum has an Azure Active Directory (Azure AD) tenant named adatum.com. The tenant has Security defaults disabled.

The tenant contains the users shown in the following table.

Problem Statements

A Datum identifies the following issues:

- \* Multiple users in the sales department have up to five devices. The sales department users report that sometimes they must contact the support department to join their devices to the Azure AD tenant because they have reached their device limit.
- \* A recent security incident reveals that several users leaked their credentials, a suspicious browser was used for a sign-in, and resources were accessed from an anonymous IP address.
- \* When you attempt to assign the Device Administrators role to IT\_Group1, the group does NOT appear in the selection list.
- \* Anyone in the organization can invite guest users, including other guests and non-administrators.
- \* The helpdesk spends too much time resetting user passwords.
- \* Users currently use only passwords for authentication.

Requirements

A Datum plans to implement the following changes;

- \* Configure self-service password reset {SSPR}.
- \* Configure multi-factor authentication (MFA) for all users.
- \* Configure an access review for an access package named Package1.
- \* Require admin approval for application access to organizational data.
- \* Sync the AD DS users and groups from litware.com with the Azure AD tenant.
- \* Ensure that only users that are assigned specific admin roles can invite guest users.
- \* Increase the maximum number of devices that can be joined or registered to Azure AD to 10.

Technical Requirements

A Datum identifies the following technical requirements:

- \* Users assigned the User administrator role must be able to request permission to use the role when needed for up to one year.
- \* Users must be prompted to register for MFA and provided with an option to bypass the registration for a grace period.
- \* Users must provide one authentication method to reset their password by using SSPR. Available methods must include:
  - \* Email
  - \* Phone
  - \* Security questions
  - \* The Microsoft Authenticator app
- \* Trust relationships must NOT be established between the adatum.com and litware.com AD DS domains.
- \* The principle of least privilege must be used.

### NEW QUESTION # 277

You have an Azure subscription.

You need to create two custom roles named Role1 and Role2. The solution must meet the following requirements:

- \* Users that are assigned Role1 can create or delete instances of Azure Container Apps.
- \* Users that are assigned Role2 can enforce adaptive network hardening rules.

Which resource provider permissions are required for each role? To answer, select the appropriate options in the answer area.

NOTE: Each correct selection is worth one point.

Answer Area

Role1:  

- Microsoft.App
- Microsoft.Compute
- Microsoft.Management
- Microsoft.Security

Role2:

- Microsoft.App
- Microsoft.Compute
- Microsoft.Network
- Microsoft.Security

Answer:

Explanation:

Answer Area

Role1:

- Microsoft.App
- Microsoft.Compute
- Microsoft.Management
- Microsoft.Security

Role2:

- Microsoft.App
- Microsoft.Compute
- Microsoft.Network
- Microsoft.Security

Explanation:

Answer Area

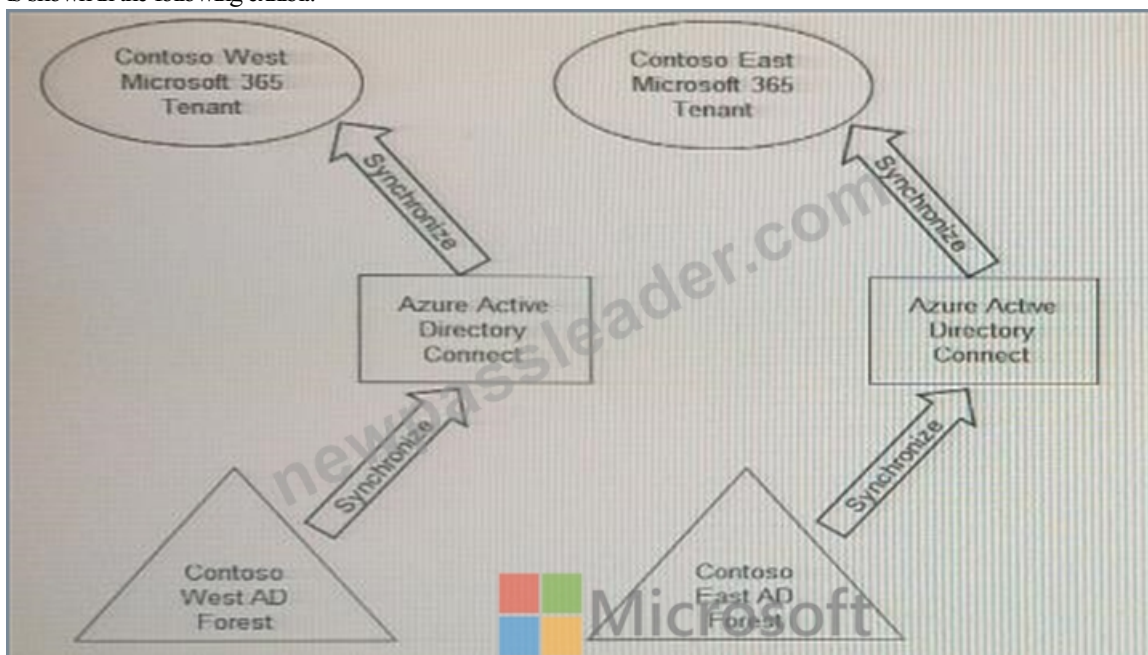
Role1:

Role2:



### NEW QUESTION # 278

Your company has two divisions named Contoso East and Contoso West. The Microsoft 365 identity architecture for both divisions is shown in the following exhibit.



You need to assign users from the Contoso East division access to Microsoft SharePoint Online sites in the Contoso West tenant. The solution must not require additional Microsoft 365 licenses. What should you do?

- A. Configure Azure AD Application Proxy in the Contoso West tenant.
- B. Configure the existing Azure AD Connect server in Contoso East to sync the Contoso East Active Directory forest to the Contoso West tenant.
- C. Deploy a second Azure AD Connect server to Contoso East and configure the server to sync the Contoso East Active Directory forest to the Contoso West tenant.
- **D. Invite the Contoso East users as guests in the Contoso West tenant.**

**Answer: D**

Explanation:

In SC-300, Microsoft emphasizes Azure AD B2B collaboration for cross-tenant access without extra Microsoft 365 licensing. The guidance explains that organizations can invite external users as guests to their tenant to access Microsoft 365 resources such as SharePoint Online and Teams, and guest access does not require an additional Microsoft 365 license for the guest. The host tenant remains licensed for the workloads being accessed, and Azure AD billing for B2B collaboration is handled through External Identities (MAU) if configured. The study content also notes that synchronizing a single on-premises AD forest to multiple Azure AD tenants is not a supported topology with a single Azure AD Connect server, and deploying another AAD Connect to sync the same identities to a second tenant introduces complexity and is unnecessary when the requirement is simply to let users in one tenant access resources in another. Application Proxy (publishing on-prem apps) is unrelated to granting SharePoint Online cross-tenant access. Therefore, the minimum-effort, license-compliant approach is to invite Contoso East users as B2B guests in the Contoso West tenant and assign them the required SharePoint permissions.

## NEW QUESTION # 279

.....

Taking NewPassLeader Microsoft Identity and Access Administrator (SC-300) practice test questions are also important. These SC-300 practice exams include questions that are based on a similar pattern as the finals. This makes it easy for the candidates to understand the Microsoft Identity and Access Administrator (SC-300) exam question paper and manage the time. It is indeed a booster for the people who work hard and do not want to leave any chance of clearing the SC-300 Exam with brilliant scores. These Microsoft Identity and Access Administrator (SC-300) practice test questions also boost your confidence.

**Study SC-300 Center:** <https://www.newpassleader.com/Microsoft/SC-300-exam-preparation-materials.html>

- Microsoft SC-300 Exam Dumps-Shortcut To Success [2026]  Easily obtain free download of  SC-300  by searching on  [www.testkingpass.com](http://www.testkingpass.com)   Certification SC-300 Torrent
- Pass Guaranteed Microsoft - SC-300 –Efficient Test Sample Questions  Go to website  [www.pdfvce.com](http://www.pdfvce.com)   open and search for  SC-300  to download for free  Real SC-300 Dumps
- New SC-300 Learning Materials  Latest SC-300 Exam Tips  Exam SC-300 Success  Enter  [www.pdfdumps.com](http://www.pdfdumps.com)  and search for  SC-300  to download for free  Valid SC-300 Exam Pattern
- SC-300 Exam Questions, SC-300 study materials. Microsoft Identity and Access Administrator  Enter  [www.pdfvce.com](http://www.pdfvce.com)   and search for  SC-300  to download for free  SC-300 Brain Dump Free
- Pass Guaranteed Quiz 2026 Microsoft SC-300: Microsoft Identity and Access Administrator – Valid Test Sample Questions  Download { SC-300 } for free by simply entering  [www.practicevce.com](http://www.practicevce.com)  website  Pass4sure SC-300 Exam Prep
- Reliable SC-300 Practice Materials !! Testking SC-300 Learning Materials  SC-300 Brain Dump Free   Search for  SC-300   and download it for free on { [www.pdfvce.com](http://www.pdfvce.com) } website  Valid SC-300 Exam Pattern
- Testking SC-300 Learning Materials  Valid SC-300 Exam Format  New SC-300 Exam Questions  Download  SC-300  for free by simply searching on “ [www.exam4labs.com](http://www.exam4labs.com) ”  Latest SC-300 Exam Tips
- New SC-300 Exam Questions  SC-300 Exam Vce Free  Reliable SC-300 Practice Materials  Search for “ SC-300 ” on  [www.pdfvce.com](http://www.pdfvce.com)   immediately to obtain a free download  Latest SC-300 Exam Tips
- 100% Pass-Rate Microsoft SC-300 Test Sample Questions Are Leading Materials - Realistic Study SC-300 Center  Open  [www.prepawaypdf.com](http://www.prepawaypdf.com)  and search for  SC-300   to download exam materials for free  SC-300 Free Sample Questions
- Reliable SC-300 Exam Tips  Certification SC-300 Torrent  New SC-300 Exam Questions  Copy URL  [www.pdfvce.com](http://www.pdfvce.com)  open and search for  SC-300  to download for free  SC-300 Instant Access
- Exam SC-300 Success  Pass4sure SC-300 Exam Prep  New SC-300 Learning Materials  Easily obtain  SC-300  for free download through  [www.pdfdumps.com](http://www.pdfdumps.com)   Reliable SC-300 Exam Tips

- asiyafzza937090.p2blogs.com, aronkibz924067.wikibestproducts.com, jaynjko898176.p2blogs.com, 40bbk.com, teganhvtq049034.shoutmyblog.com, blakeethn816850.vblogetin.com, nellagww710771.blogsumer.com, github.com, qasimecla168757.blog2freedom.com, myportal.utt.edu.tt, myportal.utt.edu.tt, myportal.utt.edu.tt, myportal.utt.edu.tt, myportal.utt.edu.tt, myportal.utt.edu.tt, myportal.utt.edu.tt, myportal.utt.edu.tt, myportal.utt.edu.tt, myportal.utt.edu.tt, Disposable vapes

DOWNLOAD the newest NewPassLeader SC-300 PDF dumps from Cloud Storage for free: [https://drive.google.com/open?id=1x2syjQWlcmkC1Zx8-au-djQln9LjG\\_Z](https://drive.google.com/open?id=1x2syjQWlcmkC1Zx8-au-djQln9LjG_Z)