

## Download 300-510 Fee | 300-510 Test Guide



BTW, DOWNLOAD part of ActualTorrent 300-510 dumps from Cloud Storage: <https://drive.google.com/open?id=1FXR6ITMLtSyiYPkZloWxt1GQflxAy-3>

ActualTorrent 300-510 Desktop Practice Exam Software: In the Desktop 300-510 practice exam software version of 300-510 practice test is updated and real. The software is useable on Windows-based computers and laptops. There is a demo of the Implementing Cisco Service Provider Advanced Routing Solutions (300-510) practice exam which is totally free. Cisco 300-510 practice test is very customizable and you can adjust its time and number of questions.

To be eligible for the Cisco 300-510 certification exam, candidates must have a valid CCNP or CCIE certification. 300-510 exam consists of 60-70 questions that need to be answered in 90 minutes. The questions are a combination of multiple choice, drag and drop, and simulation-based questions that test the candidate's theoretical knowledge as well as practical skills. Passing 300-510 exam validates the candidate's ability to implement and troubleshoot advanced routing solutions for service providers, making them a valuable asset to any organization that operates a service provider network.

Cisco 300-510 certification exam is designed to test the knowledge and skills of IT professionals in implementing advanced routing solutions in a service provider network. 300-510 Exam is part of the Cisco Certified Specialist - Service Provider Advanced Routing Implementation certification track, which is intended for individuals who want to specialize in service provider routing technologies.

Cisco 300-510 certification exam measures the knowledge and abilities of candidates in implementing service provider advanced routing solutions. 300-510 exam is ideal for IT professionals who wish to advance their careers in designing and implementing complex network systems. 300-510 exam evaluates the ability of the candidates to work with routing protocols and technologies, and their knowledge in various advanced network designs.

## Implementing Cisco Service Provider Advanced Routing Solutions practice vce dumps & 300-510 latest exam guide & Implementing Cisco Service Provider Advanced Routing Solutions test training torrent

In addition to the free download of sample questions, we are also confident that candidates who use 300-510 Test Guide will pass the exam at one go. Implementing Cisco Service Provider Advanced Routing Solutions prep torrent is revised and updated according to the latest changes in the syllabus and the latest developments in theory and practice. After you pass the exam, if you want to cancel your account, contact us by email and we will delete all your relevant information. Second, the purchase process of Implementing Cisco Service Provider Advanced Routing Solutions prep torrent is very safe and transactions are conducted through the most reliable guarantee platform.

### Cisco Implementing Cisco Service Provider Advanced Routing Solutions Sample Questions (Q145-Q150):

#### NEW QUESTION # 145

Refer to the exhibit.

```
RP/0/0/CPU0:XR1#show run

route-policy AGGRO
  if destination in (10.0.0.0/8 ge 8 le 25) then
    set community (10:825)
  endif
  if destination in (10.2.0.0/24) then
    drop
  endif
  if destination in (10.1.0.0/24) then
    suppress-route
  endif
end-policy
!
!
router bgp 1
  bgp router-id 192.168.0.7
  address-family ipv4 unicast
    aggregate-address 10.0.0.0/8 route-policy AGGRO
RP/0/0/CPU0:XR1#
```

A network operator is working to filter routes from being advertised that are covered under an aggregate announcement. The receiving router of the aggregate announcement block is still getting some of the more specific routes plus the aggregate. Which configuration change ensures that only the aggregate is announced now and in the future if other networks are to be added?

- A. Set each specific route in the AGGRO policy to remove instead of suppress-route
- B. Set each specific route in the AGGRO policy to drop instead of suppress-route
- C. Configure the summary-only keyword on the aggregate command
- D. Filter the routes on the receiving router

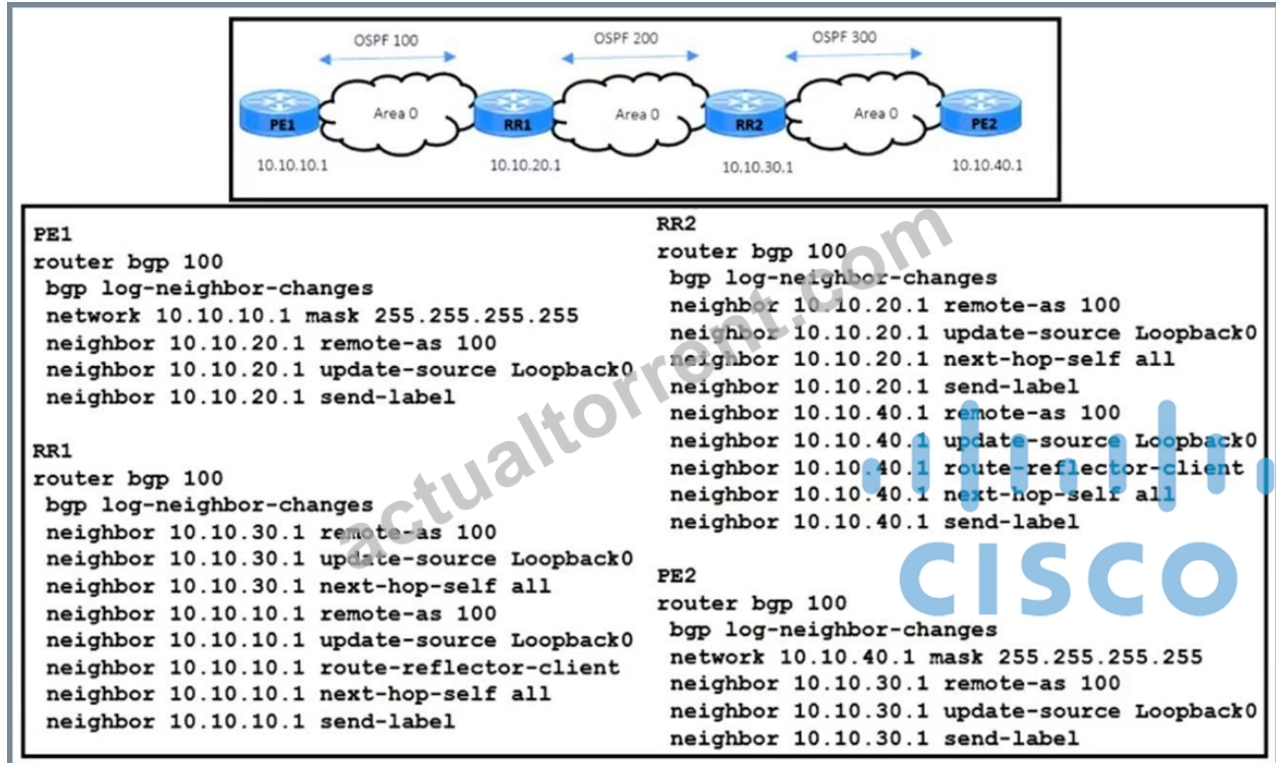
Answer: C

#### NEW QUESTION # 146

Refer to the exhibit. A network engineer is investigating a report of packet drops in an application running on a server connected to PE2. The engineer determined that:

- The OSPF adjacency in area 0 is up, and it is learning the loopback addresses of all routers in area 0.
- Traffic from users connected to PE1 to the application is also passing normally.
- Packets from PE2 back to PE1 are being dropped.

Which action resolves the issue?

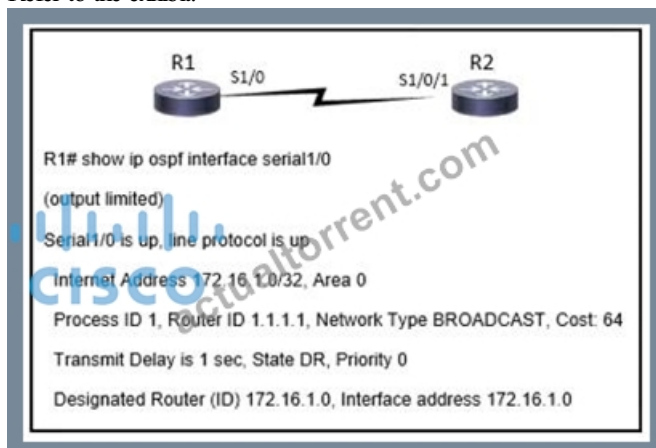


- A. RR1(config)# router bgp 100  
RR1(config-router)# neighbor 10.10.30.1 send-label
- B. RR2(config)# router bgp 100  
RR2(config-router)# redistribute ospf 100
- C. RR1(config)# router bgp 100  
RR1(config-router)# redistribute ospf 100
- D. RR2(config)# router bgp 100  
RR2(config-router)# no neighbor 10.10.20.1 send-label

Answer: A

#### NEW QUESTION # 147

Refer to the exhibit.



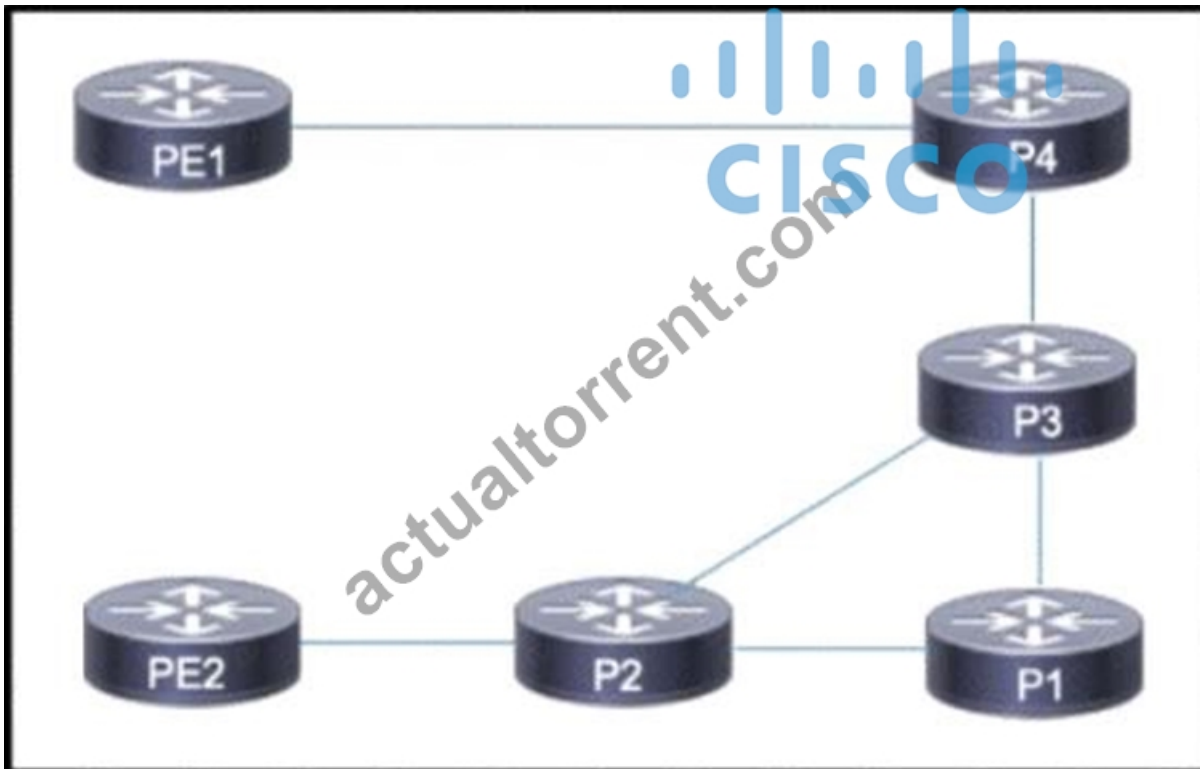
While configuring router 2 with all the default values, a network engineer cannot see any route received in router 1. How should the engineer solve the issue?

- A. Set up a priority different than 0 in the interface.
- B. Set the network type in S1/0 to point-to-point.
- **C. Modify the IP address or mask of the interface to a valid one.**
- D. Modify the router ID to be the interface IP on the serial.

**Answer: C**

#### NEW QUESTION # 148

Refer to the exhibit.



A regional service provider provides connectivity for several midsize businesses that run mission-critical applications between multiple offices connected via PE 1 and PE2. Links throughout the service provider network are connected using shared resources and an SR-TE tunnel is in use to route traffic over different paths depending on congestion policies. The networking team must implement SR updates to reduce downtime in the event of a link failure. Which action must the team take to meet the requirements?

- **A. Implement SRLG protection to identify a post-convergence backup path**
- B. Implement VRFs to segment the network and avoid large-scale network outages when a link fails
- C. Implement BGP timers to support immediate reconvergence when the BGP neighbor relationship status changes.
- D. Implement targeted LDP neighbors to prevent unwanted LDP relationships from forming

**Answer: A**

#### NEW QUESTION # 149

A network operator working for a telecommunication company with an employee id: 4074:92:707 is planning to implement the Nonstop Forwarding (NSR) feature on the customer's core network. After getting the configuration ready for NSR, on which router should the operator implement NSR changes?

- A. on the CE router
- B. on the ASBR router
- C. on the ABR router
- **D. on the PE router**

**Answer: D**



• • • • •

**300-510 Test Guide:** <https://www.actualtorrent.com/300-510-questions-answers.html>

- P.S. Free & New 300-510 dumps are available on Google Drive shared by ActualTorrent: <https://drive.google.com/open?id=1FXR6ITMLtSyiYPkZloWxtt1GQflxAY-3>