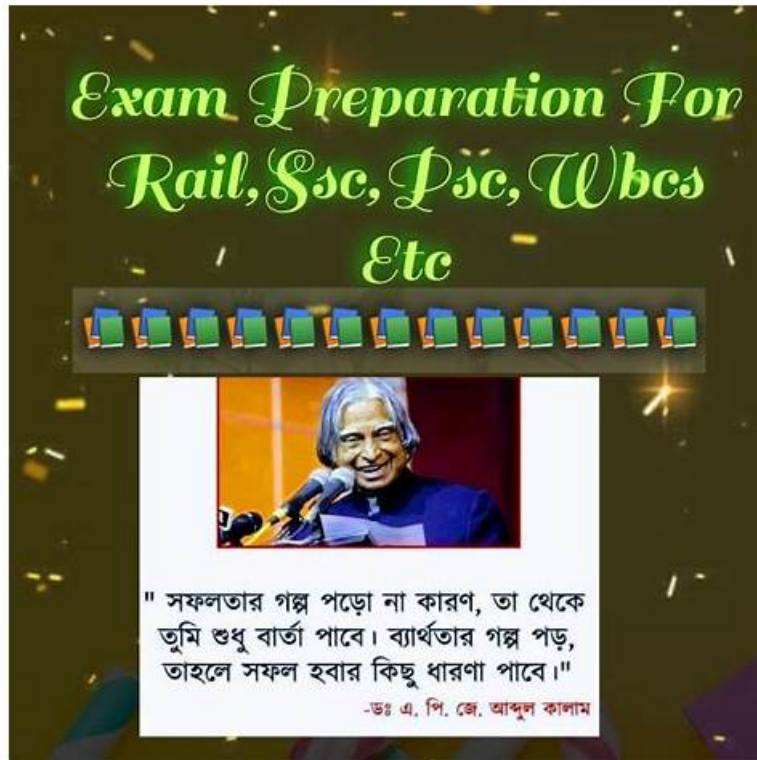


TOP Reliable C_S43 Exam Materials 100% Pass | High-quality SAP Key SAP Certified Implementation Consultant - SAP S/4HANA Cloud Private Edition, Asset Management (C_S43_2601) Concepts Pass for sure



Standing out among all competitors and taking the top spot is difficult but we made it by our C_S43 preparation materials. They are honored for their outstanding quality and accuracy so they are prestigious products. Our C_S43 exam questions beat other highly competitive companies on a global scale. They provide a high pass rate for our customers as 98% to 100% as a pass guarantee. And as long as you follow with the C_S43 Study Guide with 20 to 30 hours, you will be ready to pass the exam.

Our online test engine and the windows software of the C_S43 study materials can evaluate your exercises of the virtual exam and practice exam intelligently. Our calculation system of the C_S43 study materials is designed subtly. Our evaluation process is absolutely correct. We are strictly in accordance with the detailed grading rules of the real exam. The point of every question is set separately. Once you submit your exercises of the C_S43 Study Materials, the calculation system will soon start to work.

>> Reliable C_S43 Exam Materials <<

2026 Reliable C_S43 Exam Materials - Realistic Key SAP Certified Implementation Consultant - SAP S/4HANA Cloud Private Edition, Asset Management (C_S43_2601) Concepts Pass Guaranteed

PracticeMaterial offers you a full refund if you are not able to pass the C_S43 certification exams after preparing with our products. The high quality of C_S43 certification exam preparation products increases your success probability and reduces the chances of failure. The C_S43 exam preparation products contain all the features to make you ready for embracing success in a first attempt. These C_S43 Exam Preparation products are updated regularly for guaranteed success. Free demo is also offered to the users for checking the C_S43 exam preparation products quality.

SAP Certified Implementation Consultant - SAP S/4HANA Cloud Private Edition, Asset Management (C_S43_2601) Sample Questions (Q10-Q15):

NEW QUESTION # 10

In the following assessment you will slip into the role of a consultant implementing SAP S/4HANA Asset Management OnPrem/Private Cloud for Machine Manufacturing Inc. . You need to fulfill various system tasks to setup certain business processes and test them.

Note:

In the task descriptions is no information provided if and/or how Asset Management specific customizing settings need to be adapted. This is an implicit part of the exam.

Note:

There is no information provided which UI to use when creating the data in the system e.g. SAP GUI, SAP Fiori Launchpad. This is an implicit part of the exam.

Your performance in each exercise will be evaluated to produce an overall score that determines a pass or fail for the exam. Please read every exercise carefully and enter any data exactly as requested without alteration. Some input data is provided in tables or in the task descriptions, however your input data is not limited to these parameters.

Use the following Logon information for all tasks:

System	User Name / ID	Password
T41	S43900-##	Welcome1
400		

Caution:

Please make sure you are always using your assigned group number (denoted as ## in the following) .

Your results will not be recorded if you are not using your own group number.

For example, if your group number is 10 i.e. (## = 10), your user will be S43900-10.

To find your group number: Click the Access button on the practice system details page. You will find your group number displayed beneath the "Get started" header in the pop-up window. Alternatively, in your Windows Terminal Server, choose the Windows button in the lower left corner. The Start Menu opens. In its upper left corner, choose the Expand icon (three white lines). Find your user name next to the user icon on the left side of the menu - the last two digits of the user name are your group number ##.

Note:

To access your backend system in the Windows Terminal Server, open the SAP Logon application and start the T41 system (Client 400). You can access the SAP Fiori Launchpad from the SAP Menu in T41. Always work with user S43900-## in order to have the required roles in place for your tasks.

Caution:

To keep the system running smoothly and avoid unnecessary costs, please follow the assigned exercises carefully when using the SAP Landscape. Avoid going beyond the exercise scope and stay within your allocated resources to help maintain a stable and efficient environment for everyone and to ensure your data is evaluated properly.

Note:

In the following, you will be asked to create new transaction data, among others. If you are asked to create one specific new transaction data object, and - for whatever reason - you create more than one of that kind, SAP will evaluate your newest version only. For example: if you are asked to create a Maintenance Order of a specific Order Type in an exercise and you create three different Maintenance Orders of a specific Order Type, only your order with the highest order number will be evaluated.

Answer:

Explanation:

See the Explanation for complete Solution of this Task.

Explanation:

Task Objective

In this assessment, you assume the role of a consultant implementing SAP S/4HANA Asset Management for Machine Manufacturing Inc. . Your goal is to set up and test specific business processes through various system tasks.

Step 1: Identify Your Assigned Group Number (##)

This is the most critical step, as your results will only be recorded if you use your specific group number, denoted as ## in all instructions.

How to find your number:

* Method A: Click the Access button on the practice system details page; your group number is displayed beneath the "Get started" header.

* Method B: In the Windows Terminal Server, click the Windows button (Start Menu), select the Expand icon (three white lines), and find your user name next to the user icon. The last two digits of that name are your group number.

Step 2: Access the System

You must use the specific credentials provided to ensure you have the required roles for the assessment.

Logon Credentials:

- * System : T41
- * Client : 400
- * User Name/ID : S43900-## (e.g., if your group number is 10, use S43900-10)
- * Password : Welcome1

Connection Methods:

- * SAP GUI : Open the SAP Logon application in the Windows Terminal Server and start the T41 system (Client 400).
- * SAP Fiori Launchpad : This can be accessed directly from the SAP Menu within the T41 system.

Step 3: Understand Implicit Exam Rules

The assessment does not provide exhaustive instructions; certain technical decisions are considered part of the exam.

* Customizing : You must determine if and how specific Asset Management customizing settings need to be adapted.

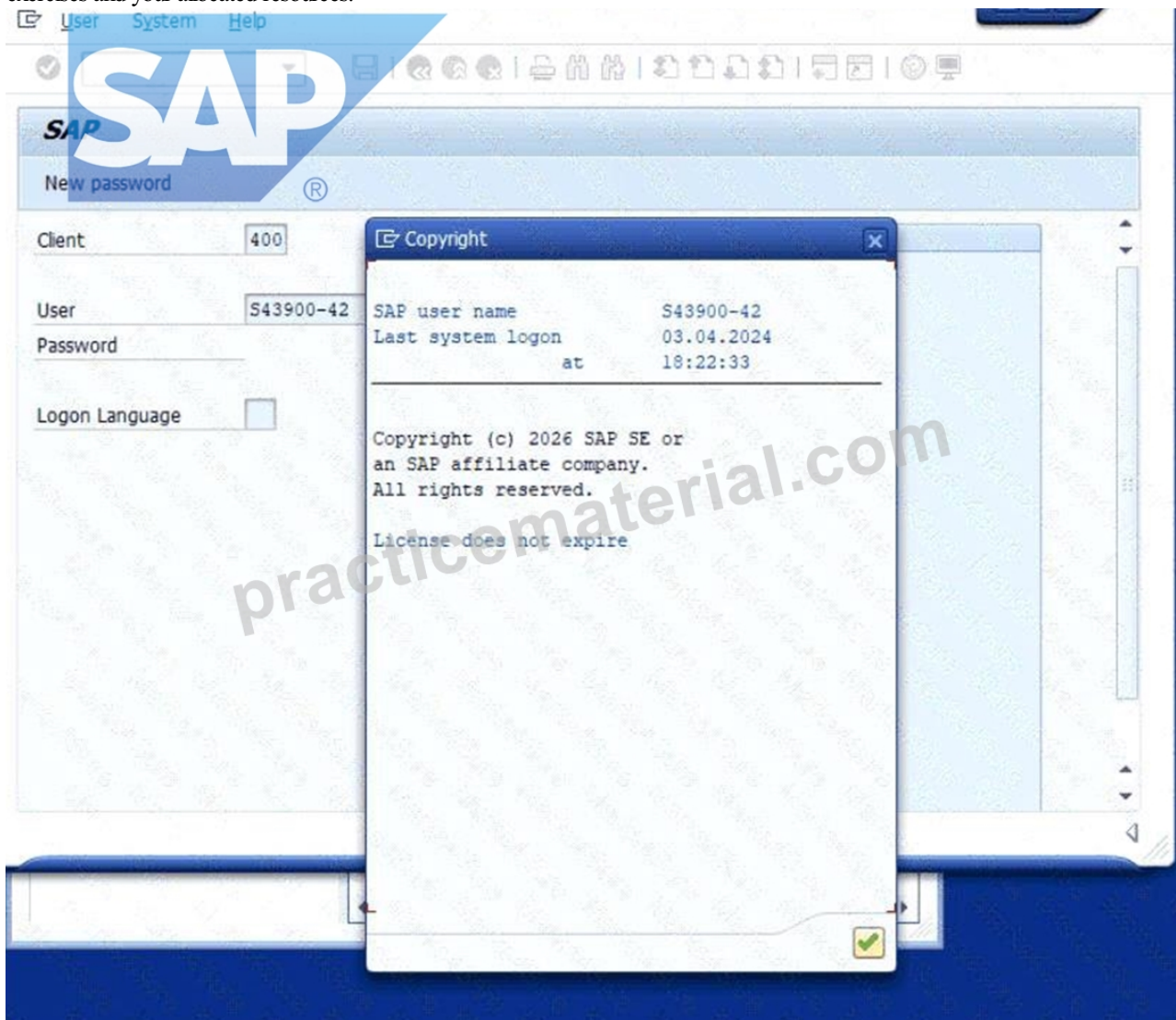
* User Interface : You are free to choose between the SAP GUI or SAP Fiori Launchpad to create data, as the instructions do not specify which to use.

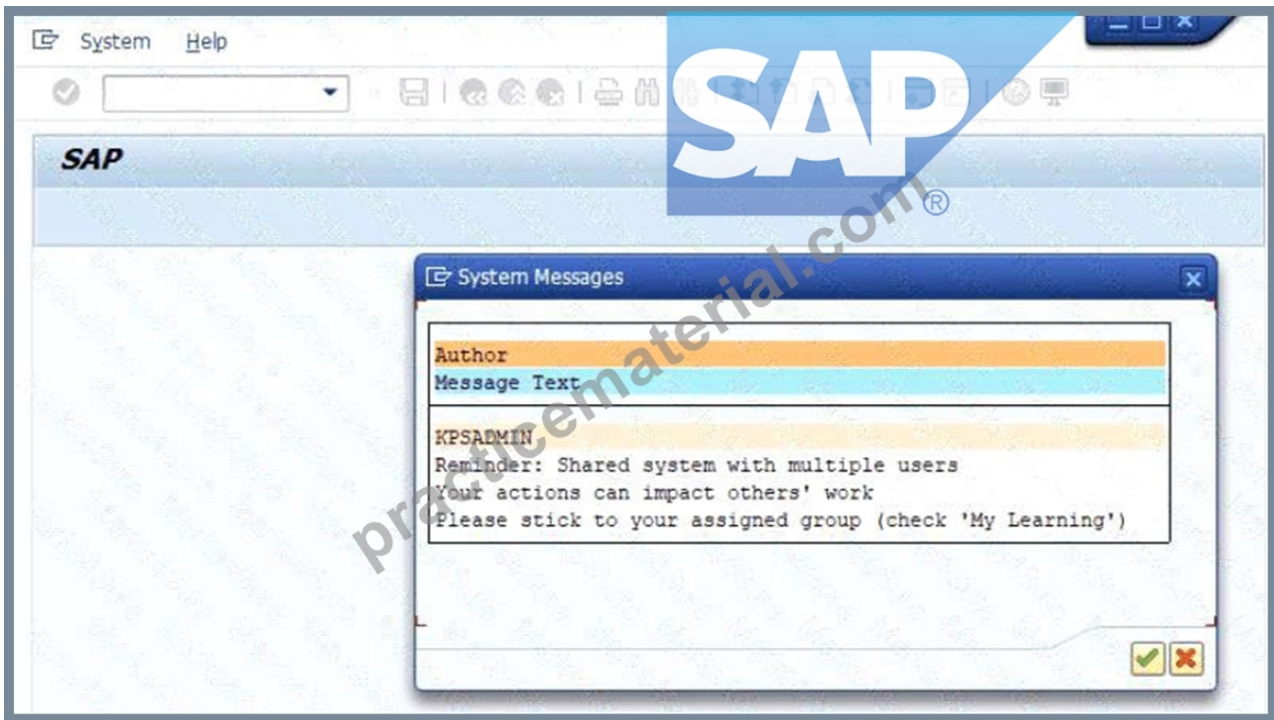
* Data Accuracy : Enter all data exactly as requested in the tables or descriptions without any alterations.

Step 4: Evaluation of Transaction Data

If you are asked to create a specific transaction object (like a Maintenance Order) and you create multiple versions, the system will only evaluate the newest version (the one with the highest identifying number).

Caution : To ensure your data is evaluated properly and to maintain system stability, stay strictly within the scope of the assigned exercises and your allocated resources.





NEW QUESTION # 11

Create a Task List

The project team evaluates during the implementation project Task Lists in SAP S/4HANA Asset Management. The following features need to be checked:

- * Create a Task List header
- * Create Task List operations
- * Create a Task List with 3 Task List operations. Maintenance Strategy Z## comprises Maintenance Packages with different hierarchy levels.

Use the following information at header level of the Task List:

Field	Value
Group	TL-##
Group Counter	1
Planning Plant	1010
Description	Regular Maintenance GR##
Work Center	MK-00
Work Center Plant	1010
Usage	4
Planner Group	E##
Maintenance Strategy	Z##

Use the following information for each Task List operation:

Field	Value
Work Ctr	MK-00
Plnt	1010
Control Key	PM01
Work	30
Unit	MIN

* Assign Maintenance Packages to the Task List Operations as follows:

- * Operation 10 is to be performed monthly.
- * Operation 20 is to be performed every 4 months.
- * Operation 30 is to be performed every 12 months.

Answer:

Explanation:

See the Explanation for complete Solution of this Task.

Explanation:

Since we encountered that error with the Z48 strategy, we must ensure that is fixed before we can finish the Task List. Here is the complete, verified, step-by-step process to finalize Task 7, including the "hidden" pre-requisite.

Task 7: Create a General Task List

Objective : To create a standardized template of maintenance steps that can be automatically pulled into future work orders based on a schedule.

Step 1: The Pre-requisite (Fixing Strategy Z48)

If you haven't done this yet, SAP will not let you save the Task List.

- * Transaction : IP11 (Maintain Maintenance Strategies).
- * Action : Click New Entries .
- * Strategy : Z48
- * Description : Strategy for Group 48
- * Strategy Unit : MON (Months).
- * Packages : On the left, double-click Packages, then click New Entries :
- * Line 1 : Cycle 1 / Unit MON / Text Monthly
- * Line 2 : Cycle 4 / Unit MON / Text Every 4 Months
- * Line 3 : Cycle 12 / Unit MON / Text Yearly
- * Save (Floppy Disk icon).

Explanation : A strategy is the "calendar" that defines how often work happens. Without this, the system doesn't know what "Monthly" or "Yearly" means.

Step 2: Create Task List Header

- * Transaction : IA05 .
- * Initial Screen : Group TL-48, Group Counter 1. Press Enter .
- * Header Fields :
- * Description : Regular Maintenance GR48
- * Planning Plant : 1010
- * Work Center : MK-00 / Plant : 1010
- * Usage : 4 (Plant Maintenance)
- * Status : 4 (Released)
- * Planner Group : P48
- * Maint. Strategy : Z48

Explanation : The header defines who is responsible for the work (Planner Group P48) and which scheduling rules (Strategy Z48) apply to the whole list.

Step 3: Create Operations

- * Click the Operations button (F6) at the top.
- * Enter three rows with this data:
- * Op 10 : Work Center MK-00, Plant 1010, Control Key PM01, Work 30, Unit MIN.
- * Op 20 : (Same as above).
- * Op 30 : (Same as above).

Explanation : Operations are the actual steps the technician follows. Here, we are saying each step takes 30 minutes of mechanical

labor.

Step 4: Assign Maintenance Packages (The "Frequencies")

This is the most important part of Task 7. We tell SAP which operation happens when.

* Select Row 10 (click the box at the far left of the row).

* Go to Menu: Goto > Maintenance Packages .

* Check the box for the 1 Month package. Click the Back (Green Arrow) icon.

* Select Row 20 .

* Go to Goto > Maintenance Packages and check the 4 Month package. Click Back .

* Select Row 30 .

* Go to Goto > Maintenance Packages and check the 12 Month package. Click Back .

Explanation : Now, SAP knows that Op 10 happens every month, but Op 30 only happens once a year.

Step 5: Save

* Click the Save icon.

* The message at the bottom should say: "Task list TL-48 saved with group counter 1" .

NEW QUESTION # 12

Use Phase-Based Maintenance Processing

The project team evaluates during the implementation project Phase-Based Maintenance Processing in SAP S/4HANA Asset Management. The following features need to be checked:

* Initiate and screen a Maintenance Notification

* Plan Maintenance Order and send it for approval

* Create a Maintenance Notification using an already available notification type which is suitable for phase-based maintenance and save it.

Use the following data:

Field	Value
Technical Object	T-PB##
Current Location	Production Line 1
Detection Method	Continuous Condition Monitoring
Operational Effect	Production restricted
Description	Defective pump (phase-based)

* Screen and accept the just created Maintenance Notification.

* Create an Order (Phase-based) for your accepted notification and submit it for approval.

Use the following data:

Field	Value
Technical Object	T-PB##
Operation 0010 - Description	Repair damage
Operation 0010 - Work	2 h

Answer:

Explanation:

See the Explanation for complete Solution of this Task.

Explanation:

Task 10 Overview

This task evaluates your ability to manage the newer, phase-led maintenance workflow in SAP S/4HANA.

Unlike the traditional "emergency" repair you did earlier, this process includes formal screening and approval steps Step 1: Create a Phase-Based Maintenance Notification In this step, you initiate the request.

* Access the Transaction : Use transaction IW21 or the Fiori app Create Maintenance Request .

* Select Notification Type : Use a type configured for phase-based maintenance (typically Y1 - Maintenance Request).

* Enter the Following Data :

* Technical Object : T-PB48

* Description : Defective pump (phase-based)

* Current Location : Production Line 1

* Detection Method : Continuous Condition Monitoring

* Operational Effect : Production restricted

* Save : Note the notification number generated.

Explanation : This step "initiates" the maintenance process. In phase-based maintenance, the notification starts in the Initiation phase, where it must be reviewed before any work is planned.

Step 2: Screen and Accept the Notification

As a "Maintenance Coordinator," you must now review the request.

* Access the Fiori App : Open Screen Maintenance Requests .

* Locate Your Notification : Find the notification you just created for T-PB48.

* Perform Screening :

* Review the details to ensure they are complete.

* Click Accept to move it to the next phase.

Explanation : "Screening" is a quality gate. It ensures that the maintenance team only spends time planning valid, well-described issues. Once accepted, the notification moves from the Initiation phase to the Screening phase and finally becomes available for planning.

Step 3: Create and Plan the Phase-Based Order

Now you will create the formal work order for the accepted request.

* Create Order : From within the accepted notification, or using the Manage Maintenance Backlog app, choose to Create Order .

* Enter Planning Data :

* Technical Object : T-PB48

* Operation 0010 Description : Repair damage

* Operation 0010 Work : 2 h

* Submit for Approval : Look for the Submit for Approval button at the top of the order screen.

Explanation : This step moves the order into the Planning phase. By submitting it for approval, you are requesting the budget and resources to perform the work. The order status will change to indicate it is

"Waiting for Approval"

NEW QUESTION # 13

Task 6: Configure Maintenance Order Types and work with Maintenance Orders The project team evaluates during the implementation project Maintenance Orders in SAP S/4HANA Asset Management. The following features need to be checked:

* Configure a Maintenance Order Type and create a Maintenance Order

* Create a Time Confirmation a Maintenance Order

* Prepare a Maintenance Order for Completion

* Create a Maintenance Order and save it.

Note:

Make sure that you have maintained all required customizing settings for the Maintenance Order Type.

Use the following information at header level:

Field	Value
Order Type	ZZ##
Description	Repair pump
Priority	Medium
Equipment	T-PA##
Planning Plant	1010
Maintenance activity type	003 Repair
Plnd Costing Va	ZZ01
Act. Costing Va	ZZ01
Priority Type	PM

Plan a Maintenance Order Operation and use the following information:

Field	Value
WkCtr	T-ME##
Plnt	1010
Ctrl key	PM01

Work durtn 2 HR

* Create a Time Confirmation for the just created Maintenance Order. Use the following information:

Field	Value
Work Center	T-ME##
Work Center Plant	1010
Actual Work	2 HR
Activity Type	1410
Final Confirmtn	x (select indicator)

* Display the Actual Costs assigned to the just created Maintenance Order and set it to Technically Completed. Display the Settlement Rule.

Note:
The following information is displayed:

Field	Value
Actual Costs / Internal Labor	60,00 EUR
Sys.Status	TECO CNF JBF1 NMAT PRC SETC
Acct Assignment Cat. (via SAP GUI)	CTR
Settlement Category (via FLP)	Cost Center
Settlement Receiver	4110

Answer:

Explanation:

See the Explanation for complete Solution of this Task.

Explanation:

Task 6 Overview

The goal of this task is to process a repair from start to finish. You will convert the "leaking pump" notification into a work order, plan the labor, record the work performed, and technically close the file.

Step 1: Create the Maintenance Order from Notification

Instead of starting from scratch, we link the order to the notification you created in Task 5.

* Access the Transaction : Use transaction code IW31 .

* Initial Screen :

* Order Type : PM01.

* Notification : Enter your notification number (e.g., 10000147).

* Press Enter .

* Header Data :

* The description "Pump is leaking" should pull in automatically.

* Main Work Center : Ensure it is T-ME48.

Explanation : By entering the notification number, SAP automatically pulls in the equipment, functional location, and problem description, ensuring "data integrity" across the maintenance process.

Step 2: Plan the Operations (Labor)

You must tell the system how much effort the repair requires.

* Go to the Operations Tab .

* Enter Planning Data :

* Work : 2.

* Unit (Un) : H (Hours).

* Number : 1 (One person).

* Duration (Dur.) : 2 / Unit : H.

* Add Enhancement Data :

* Click the Additional Data tab - > Enhancement sub-tab.

* In the Field Key box, use the search (F4) to select 0000001 (User-defined fields).

* In the first text box (Text 1), type: Industrial Z48.

Explanation : Planning the work allows the system to calculate the estimated cost of the repair. The

"Enhancement" data is used to store specific technical details (like the motor type) that aren't in the standard SAP fields.

Step 3: Release the Order

An order in "Created" (CRTD) status is just a plan. To start work, it must be "Released" (REL).

* Release : Look at the top toolbar and click the Green Flag icon .

* Verify Status : The "Sys.Status" field should now include REL.

* Save : Click the Save (floppy disk) icon.

Explanation : Releasing the order is the "Green Light" for the shop floor. It allows technicians to charge time to the job and warehouse staff to issue parts.

Step 4: Time Confirmation (Recording the Work)

Now we record that the repair is physically finished.

* Access the Transaction : Use transaction code IW41 .

* Enter Data :

* Order : Enter your order number (e.g., 4000395).

* Actual Work : 2 H.

* Check the boxes for Final Confirmation and No Remaining Work .

* Confirmation Text : Pump repaired and tested.

* Save : Click the Save icon.

Explanation : This step captures the "Actual Cost." SAP multiplies the 2 hours of labor by the hourly rate of work center T-ME48 to calculate exactly how much this repair cost the company.

Step 5: Technical Completion (TECO)

The final administrative step to close the repair file.

* Access the Transaction : Use transaction code IW32 .

* Complete Technically :

* Go to menu: Order > Functions > Complete > Complete (technically) .

* Click the Green Checkmark on the popup window.

* Save : Click the Save icon.

Explanation : TECO (Technical Completion) locks the order. It tells the system the asset is back in service and prevents any further labor or parts from being charged to this specific job.

NEW QUESTION # 14

Schedule a Maintenance Plan

The project team evaluates during the implementation project the scheduling of Maintenance Plans in SAP S/4HANA Asset Management. The following features need to be checked:

Schedule a Maintenance Plan

Display a generated Maintenance Order

Schedule the previously created Maintenance Plan. The following prerequisites have to be met:

The next upcoming call is the 4 MON Maintenance Package

Calculate the Completion Date of the last Maintenance Package as follows: Today's date minus 4 weeks (e.g.

today's date: 15th of December >>> Completion Date: 17th of November) The Call Date is always 10 days before the Plan Date.

Note:

Check your Maintenance Plan and adapt it, if necessary, before you schedule it.

Check the following information in the generated Maintenance Order:

number of order operations: 2

Maintenance Plan: number of the previously created Maintenance Plan

Last Included Task List: A / TL-## / 1

Answer:

Explanation:

See the Explanation for complete Solution of this Task.

Explanation:

Task 9 Overview

The goal of this task is to trigger the maintenance schedule you built in Task 8 so that the system generates an actual work order.

You must meet specific scheduling conditions to ensure the right maintenance cycle (the 4- month package) is triggered.

Step 1: Adapt Scheduling Parameters (IP02)

Before starting the schedule, you must ensure the "Call Date" rules are correct.

* Transaction : Enter IP02 (Change Maintenance Plan).

* Maintenance Plan : Enter the number you saved in Task 8 and press Enter .

* Scheduling Parameters Tab :

* Call Horizon : Adjust this so that the Call Date occurs exactly 10 days before the Plan Date.

* Note: If your system uses percentages, you will need to calculate the percentage of the 4-month cycle that results in a 10-day lead time.

* Save your changes.

Step 2: Schedule the Plan (IP10)

Now you will "start" the clock for this maintenance schedule.

* Transaction : Enter IP10 (Schedule Maintenance Plan).

* Maintenance Plan : Enter your plan number and press Enter .

* Start Scheduling : Click the Start icon (or go to Maintenance plan > Scheduling > Start).

* Enter the "Start Date" / "Completion Date" :

* The Rule : You must use Today's date minus 4 weeks .

* Example: If today is April 19, enter March 22.

* Press Enter . The system will calculate the next calls.

* Verify the Package : Ensure the next upcoming call is indeed the 4 MON (4-month) Maintenance Package.

* Save (Floppy Disk icon). This will generate a new Maintenance Order number.

Step 3: Verify the Generated Maintenance Order

You must now check that the order was created correctly based on the rules of your Task List (Task 7) and Maintenance Plan (Task 8).

* Display Order : In IP10 , select the line for the generated call and click the Display Order icon (or use transaction IW33 with the new order number).

* Check the following three items :

* Operations : Verify there are exactly 2 operations in the order (the Monthly and 4-Month tasks).

* Maintenance Plan : Confirm the order shows your specific Maintenance Plan number.

* Task List : Verify the "Last Included Task List" is A / TL-48 / 1 .

NEW QUESTION # 15

.....

Of course, a personal learning effect is not particularly outstanding, because a person is difficult to grasp the difficult point of the test, the latest trend in an examination to have no good updates at the same time, in order to solve this problem, our C_S43 study

myportal.utt.edu.tt, myportal.utt.edu.tt, myportal.utt.edu.tt, myportal.utt.edu.tt, myportal.utt.edu.tt,
harmonyvuki960955.bloggosite.com, theatibyeinstitute.org, lawsongjyf703025.idblogmaker.com, Disposable vapes