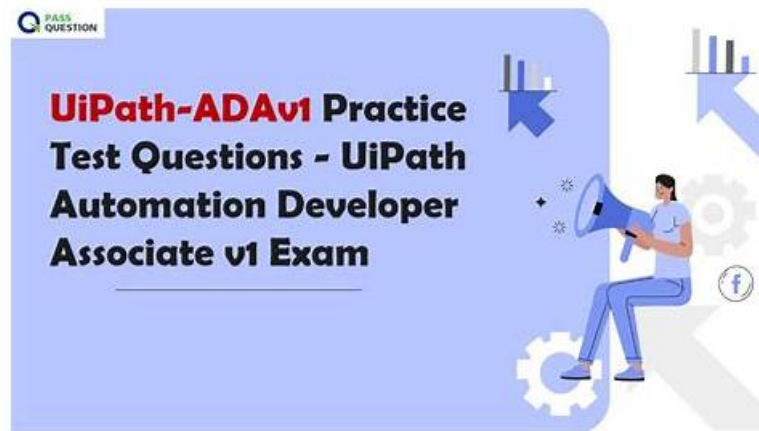


Pass Guaranteed UiPath - UiPath-ADAv1 - UiPath Automation Developer Associate v1 Exam–High Pass-Rate New Test Questions



BTW, DOWNLOAD part of Pass4Test UiPath-ADAv1 dumps from Cloud Storage: https://drive.google.com/open?id=1DC1A1_i52uQLycKLtqvUxLmgYg4J-Hj

In order to make every customer to get the most suitable method to review UiPath-ADAv1 exam, we provide three versions of the UiPath-ADAv1 exam materials: PDF, online version, and test software. We believe that there is always a kind of method to best help your exam preparation. Each version has a free demo for you to try, and each version has the latest and most comprehensive UiPath-ADAv1 Exam Materials.

UiPath-ADAv1 Exam is just a piece of cake if you have prepared for the exam with the helpful of Pass4Test's exceptional study material. If you are a novice, begin from UiPath-ADAv1 study guide and revise your learning with the help of testing engine. UiPath-ADAv1 Exam brain dumps are another superb offer of Pass4Test that is particularly helpful for those who want to the point and the most relevant content to Pass UiPath-ADAv1 Exam. With all these products, your success is assured with 100% money back guarantee.

>> New UiPath-ADAv1 Test Questions <<

Training UiPath-ADAv1 Materials - UiPath-ADAv1 Exam Dumps.zip

It helps you to pass the UiPath UiPath-ADAv1 test with excellent results. UiPath UiPath-ADAv1 imitates the actual UiPath-ADAv1 exam environment. You can take the UiPath-ADAv1 practice exam many times to evaluate and enhance your UiPath UiPath-ADAv1 Exam Preparation level. Desktop UiPath-ADAv1 practice test software is compatible with windows and the web-based software will work on these operating systems: Android, IOS, Windows, and Linux.

UiPath UiPath-ADAv1 Exam Syllabus Topics:

Topic	Details
Topic 1	<ul style="list-style-type: none">Orchestrator: This topic covers the definition of Orchestrator entities, tenant entities, and folder entities, along with their respective functionalities. It also provides practical guidance on robot provisioning, workspace management, role assignments, and logging features.
Topic 2	<ul style="list-style-type: none">Control Flow: The section explains the functionality of control flow activities and their impact on workflow types. It covers the use of sequence and flowchart layouts. Lastly, it focuses on implementing IF, For Each, and While activities, among others.
Topic 3	<ul style="list-style-type: none">Data Manipulation: This topic covers a range of data manipulation techniques, including string manipulation using VB.Net methods and the RegEx Builder. It also guides users through working with arrays, lists, and dictionaries, as well as building and iterating through Data Tables.

Topic 4	<ul style="list-style-type: none"> • UI Automation: Here, the topic explains how UI Automation works and offer guidance on using the Modern Recorder and associated activities. It also covers UI synchronization and the configuration of static and dynamic descriptors.
Topic 5	<ul style="list-style-type: none"> • Studio Interface: Here, the topic guides users through installing Studio Community Edition and connecting to Orchestrator. It covers profile differences, backstage view options, compatibility modes, and package management. Additionally, it offers an in-depth exploration of the Studio interface and its various elements.
Topic 6	<ul style="list-style-type: none"> • Implementation Methodology: The section offers an overview of project implementation stages, interpretation of PDDs and SDDs, and the conduct of automation project peer reviews, ensuring a structured approach to development.
Topic 7	<ul style="list-style-type: none"> • Debugging: Here, we explore various debugging techniques, including debug modes, actions, and ribbon options. It also guides users through setting breakpoints, utilizing debugging panels, and optimizing performance with profile execution.
Topic 8	<ul style="list-style-type: none"> • Version Control Integration: The section highlights the benefits of version control by demonstrating the use of Studio's Git integration for adding projects, cloning repositories, committing changes, and managing branches.
Topic 9	<ul style="list-style-type: none"> • Email Automation: This topic covers retrieving emails via IMAP • POP3, sending SMTP messages, and managing integrations with Microsoft and Gmail accounts, utilizing their respective packages.
Topic 10	<ul style="list-style-type: none"> • Object Repository: This topic covers the creation, publication, and consumption of UI Libraries, including the use of static and dynamic descriptors, offering a structured approach to UI element management.
Topic 11	<ul style="list-style-type: none"> • Excel Automation: The section delves into Excel Automation, showcasing the use of modern Excel activities and workbook-level operations.
Topic 12	<ul style="list-style-type: none"> • Variables and Arguments: This topic introduces data types and delves into creating, managing, and utilizing variables, arguments, and global constants • variables. It also clarifies the distinctions between these concepts, ensuring a comprehensive understanding of data handling in automation projects.
Topic 13	<ul style="list-style-type: none"> • Business Knowledge: This topic covers the fundamental concepts of business process automation, highlighting its value proposition. It also explores key ideas related to business processes, offering a comprehensive understanding of this domain.
Topic 14	<ul style="list-style-type: none"> • Workflow Analyzer: Here, the topic introduces the Workflow Analyzer tool, explaining its use for project analysis and validation, and providing guidance on configuring its settings.
Topic 15	<ul style="list-style-type: none"> • Working with Files and Folders: Here, you explore creating, managing, and navigating local files and folders, providing a foundation for file system automation.
Topic 16	<ul style="list-style-type: none"> • Logging: The section provides insights into interpreting robot execution logs and adhering to logging best practices, ensuring effective issue identification and resolution.
Topic 17	<ul style="list-style-type: none"> • Libraries and Templates: This topic covers the creation, publication, and consumption of process libraries, along with the sharing and access of templates, promoting efficient project development and standardization.
Topic 18	<ul style="list-style-type: none"> • PDF Automation: The section focuses on data extraction from native and scanned PDFs, including single and multiple document scenarios.
Topic 19	<ul style="list-style-type: none"> • Platform Knowledge: The section provides an overview of UiPath's product suite, including Studio and Robot variants, Orchestrator, and Integration Service, showcasing their unique contributions. It also emphasizes the benefits of Academy, Forum, and Marketplace in the UiPath ecosystem.

- Exception Handling: This topic focuses on error management, showcasing the use of Try Catch, Throw, and Rethrow activities, along with the Retry Scope feature, to handle exceptions gracefully.

UiPath Automation Developer Associate v1 Exam Sample Questions (Q215-Q220):

NEW QUESTION # 215

A developer published a process to UiPath Orchestrator with only the Main.xaml workflow file. There is one "In" argument of type String in the Main.xaml file with a default value of String.Empty. When running the process from the Start Job window in Orchestrator, what is the value of the argument at runtime?

- A. An Input Dialog box will prompt the user to input a value and that value will be used
- B. A runtime error will occur as arguments are not allowed in the Main.xaml file
- C. Only the default value of String.Empty will be used, overriding any values provided in Orchestrator
- D. Any input arguments provided in Orchestrator are used, otherwise the default value of String.Empty will be used

Answer: D

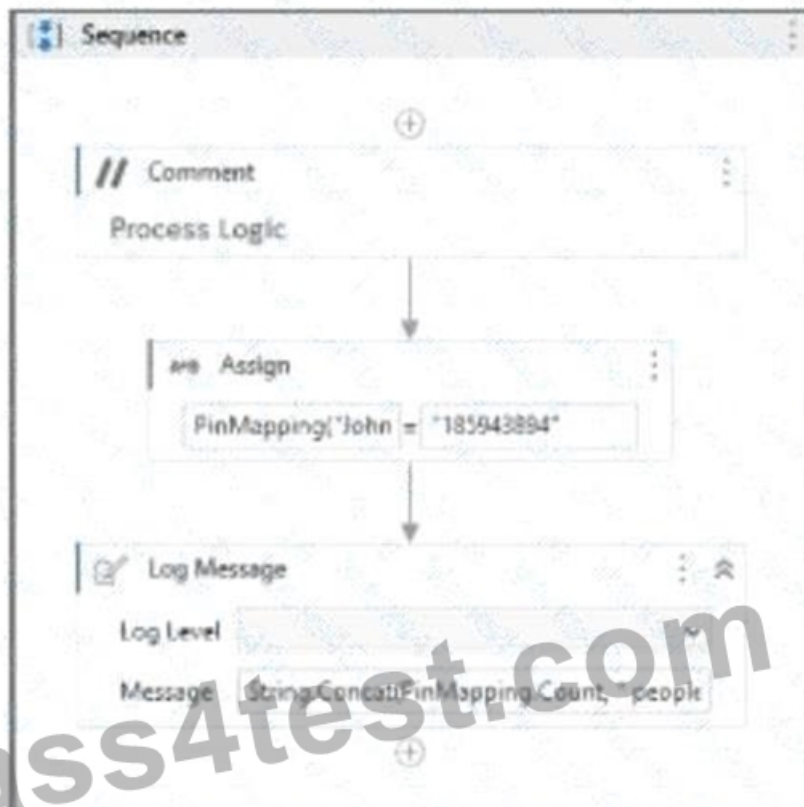
Explanation:

Explanation

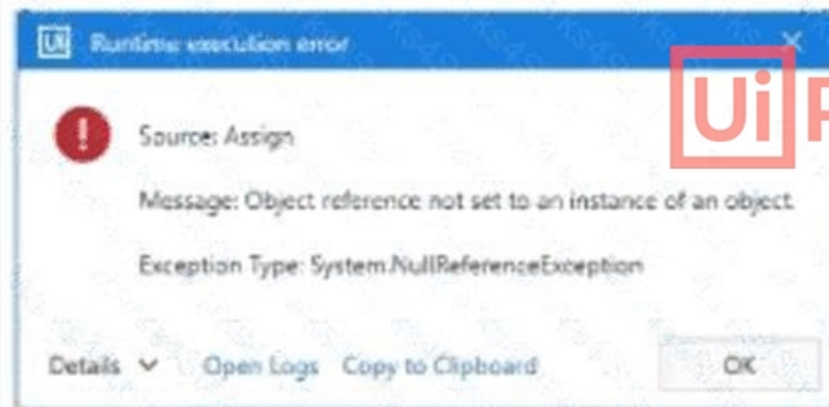
UiPath Orchestrator is a web application that enables you to deploy, monitor, and manage UiPath Robots and processes. When you publish a process from UiPath Studio to UiPath Orchestrator, you can define input and output arguments for the process. Input arguments are used to pass data from Orchestrator to the process, while output arguments are used to pass data from the process to Orchestrator. When you run a process from the Start Job window in Orchestrator, you can provide values for the input arguments in the Input section. If you do not provide any values, the default values of the input arguments are used. The default values are defined in UiPath Studio when you create the arguments. In this case, the process has one "In" argument of type String in the Main.xaml file with a default value of String.Empty. This means that when you run the process from Orchestrator, you can either provide a value for the argument in the Input section, or leave it blank. If you provide a value, that value will be used by the process. If you leave it blank, the default value of String.Empty will be used by the process. Therefore, the answer is C. Any input arguments provided in Orchestrator are used, otherwise the default value of String.Empty will be used. References: About Input and Output Arguments, Arguments

NEW QUESTION # 216

A developer needs to create a process for the Human Resources team. During the development, they try to run the workflow containing the following dictionary variable:



But this error is shown:



What is the possible cause of the error in the workflow?

- A. The assign's set value syntax should be `PinMapping<"John">`.
- **B. The Dictionary was not initialized.**
- C. The "John" key was not present in the dictionary.
- D. The assign's set value syntax should be `PinMapping["John"]`.

Answer: B

Explanation:

Understanding the Error:

The runtime execution error shown in the image is:

pgsql

CopyEdit

Message: Object reference not set to an instance of an object.

Exception Type: System.NullReferenceException

This error occurs when trying to access or modify an object that has not been initialized.

Step-by-Step Breakdown of the Issue:

- * What is Happening in the Workflow?

- * The developer is trying to assign a value to the dictionary using:

```
PinMapping["John"] = "1195488487"
```

- * Then, they attempt to log the count of the dictionary items:

```
String.Concat(PinMapping.Count, " people")
```

- * The error occurs at the Assign activity.

- * What Causes a NullReferenceException in a Dictionary?

- * If a dictionary variable is declared but not initialized, it remains Nothing (null).

- * Trying to access or modify a null object causes a NullReferenceException.

- * The dictionary should be initialized before adding key-value pairs.

Why Option B is Correct?

- # The Dictionary was not initialized.

- * The error occurs because the dictionary PinMapping is not initialized before assigning values.

- * To fix this, the dictionary must be initialized before use:

```
PinMapping = New Dictionary(Of String, String)
```

```
PinMapping("John") = "1195488487"
```

- * This ensures that the dictionary is properly instantiated in memory before accessing it.

Why Other Options Are Incorrect?

- # A. "The 'John' key was not present in the dictionary."

- * Incorrect because a missing key does not cause a NullReferenceException.

- * Instead, attempting to retrieve a missing key causes a KeyNotFoundException.

- * The error in the screenshot is caused by the dictionary itself being null, not a missing key.

- # C. "The assign's set value syntax should be PinMapping["John"]."

- * Incorrect because the syntax used in the Assign activity is correct.

- * The dictionary is of type Dictionary(Of String, String), and "John" is correctly specified as a string key.

- # D. "The assign's set value syntax should be PinMapping<"John">."

- * Incorrect because PinMapping<"John"> is not valid syntax in VB.NET.

- * The correct syntax is PinMapping("John") or PinMapping["John"] (in C# syntax).

How to Fix the Error?

- # Solution: Initialize the Dictionary Before Using It

- * Before using the dictionary, add the following initialization step:

```
PinMapping = New Dictionary(Of String, String)
```

- * Then assign values as needed:

```
PinMapping("John") = "1195488487"
```

Final Answer and Explanation:

B: The Dictionary was not initialized.

Key Takeaways:

- * A NullReferenceException occurs when trying to use an uninitialized dictionary.

- * Always initialize a dictionary before adding key-value pairs.

- * A missing key does not cause this error-it would result in a KeyNotFoundException.

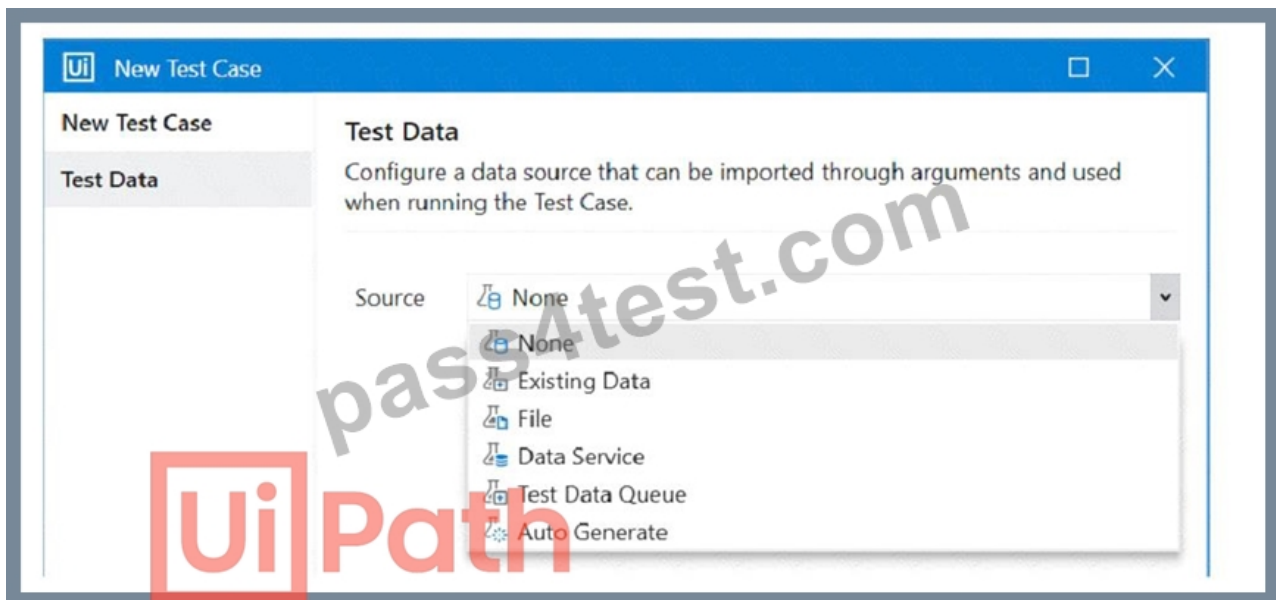
Reference:

- # UiPath Documentation - Dictionaries

- # VB.NET - Dictionary Initialization

NEW QUESTION # 217

When creating a new test case, which option restricts dynamic data update in UiPath Orchestrator once the test case is published?



- A. Data Service
- B. Data Service with Filter
- C. Test Data Queue
- D. File

Answer: D

Explanation:

Explanation

When creating a new test case in UiPath Orchestrator, you can choose a source for the test data that can be imported through arguments and used when running the test case¹. The source can be one of the following options: None, Existing Data, File, Data Service, or Test Data Queue². The option that restricts dynamic data update once the test case is published is File. This option allows you to upload a file (such as Excel or JSON) that contains the test data². However, once the file is uploaded, you cannot modify or replace it without republishing the test case³. Therefore, the test data is static and cannot be updated dynamically. The other options allow dynamic data update in different ways. For example, Data Service allows you to use an existing table from Data Service as the test data source and filter it by using a SQL query². You can update the table in Data Service and the changes will be reflected in the test case without republishing it⁴.

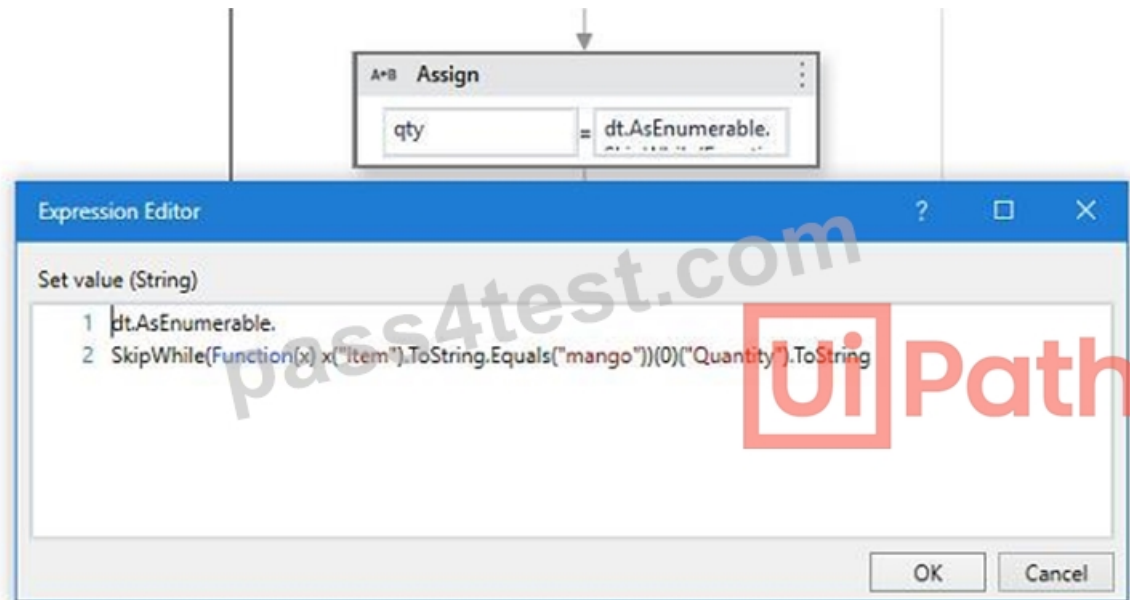
References: Test Cases documentation, New Test Case window description, Updating the test data sets forum post, Data Service documentation.

NEW QUESTION # 218

The following table is stored in a variable called "dt".

	A	B	C
1	No.	Item	Quantity
2	1	apple	10
3	2	orange	20
4	3	mango	5
5	4	kiwi	80
6	5	pear	1

What will the value of the qty variable be after executing the Assign activity?



- A. null
- **B. 0**
- C. 1
- D. 2

Answer: B

Explanation:

Explanation

The Assign activity is used to assign a value to a variable. In this case, the variable is "qty". The value of the variable will be 80 after executing the Assign activity because the expression in the Assign activity is "dt.AsEnumerable().Where(Function(x) x("Item").ToString.Equals("mango")).Select(Function(y) y("Quantity")).ToString". This expression is filtering the data table "dt" for rows where the "Item" column is equal to "mango" and then selecting the "Quantity" column from those rows. Since there is only one row in the data table where "Item" is equal to "mango", the value of the "Quantity" column in that row is 80. (UiPath Studio documentation)

References:

: [Assign - UiPath Activities].

NEW QUESTION # 219

What can the administrator do to ensure organizations have control over how Studio Web is used?

- A. Administrators can restrict the number of automations a user can create.
- B. Administrators can manually approve every automation that a user creates.
- C. Administrators can limit the use of Studio Web to certain operating systems.
- **D. Administrators can deploy governance policies from Automation Ops.**

Answer: D

Explanation:

Comprehensive and Detailed In-Depth Explanation:

Automation Ops is UiPath's enterprise governance tool that allows administrators to enforce governance policies in Studio Web, Studio, and other UiPath components.

Step-by-Step Execution Guide: Setting Up Governance Policies

1## Go to Automation Ops in UiPath Cloud Orchestrator.

2## Create a Governance Policy

* Restrict access to specific activities.

* Enforce automation best practices.

* Control which packages and dependencies can be used.3## Deploy the Governance Policy to Studio Web users.4## Monitor Usage Compliance through Automation Ops.

Real-World Use Case: Enforcing Automation Standards in a Bank

A bank wants to ensure employees only use approved automation activities in Studio Web.

[illegible]

myportal.utt.edu.tt, myportal.utt.edu.tt, myportal.utt.edu.tt, myportal.utt.edu.tt, myportal.utt.edu.tt, myportal.utt.edu.tt,
myportal.utt.edu.tt, myportal.utt.edu.tt, myportal.utt.edu.tt, myportal.utt.edu.tt, myportal.utt.edu.tt, myportal.utt.edu.tt,
myportal.utt.edu.tt, myportal.utt.edu.tt, myportal.utt.edu.tt, myportal.utt.edu.tt, www.stes.tyc.edu.tw, Disposable vapes

BTW, DOWNLOAD part of Pass4Test UiPath-ADAv1 dumps from Cloud Storage: https://drive.google.com/open?id=1DC1A1_i52uQLycKLTqvUxLmgygi4J-Hj