

2026 100% Free MuleSoft-Integration-Architect-I–Latest 100% Free Valid Test Duration | Vce MuleSoft-Integration-Architect-I Test Simulator



BONUS!!! Download part of Dumpexams MuleSoft-Integration-Architect-I dumps for free: <https://drive.google.com/open?id=1M4TcJe-lmQilAP6m8psUe1jbnPc6oXL5>

We can ensure you a pass rate as high as 99% of our MuleSoft-Integration-Architect-I exam questions. So with our MuleSoft-Integration-Architect-I study guide, you will pass the MuleSoft-Integration-Architect-I exam. And this is the right thing you can imagine. You surely desire the MuleSoft-Integration-Architect-I certification. So with a tool as good as our MuleSoft-Integration-Architect-I Exam Material, why not study and practice for just 20 to 30 hours and then pass the examination? It is more convenient for you to study and practice anytime, anywhere with our varied versions of MuleSoft-Integration-Architect-I exam braindumps.

Salesforce MuleSoft-Integration-Architect-I practice exam support team cooperates with users to tie up any issues with the correct equipment. If Salesforce MuleSoft-Integration-Architect-I certification exam material changes, Dumpexams also issues updates free of charge for 1 year following the purchase of our MuleSoft-Integration-Architect-I Exam Questions.

>> **MuleSoft-Integration-Architect-I Valid Test Duration** <<

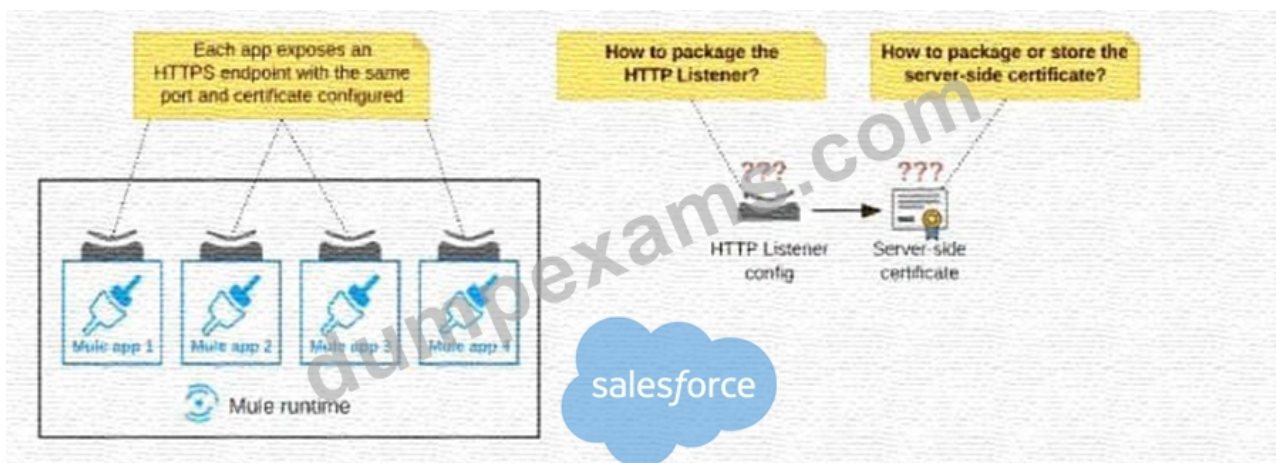
Vce Salesforce MuleSoft-Integration-Architect-I Test Simulator & Valid Exam MuleSoft-Integration-Architect-I Preparation

It is certain that the pass rate among our customers is the most essential criteria to check out whether our MuleSoft-Integration-Architect-I training materials are effective or not. The good news is that according to statistics, under the help of our MuleSoft-Integration-Architect-I training materials, the pass rate among our customers has reached as high as 98% to 100%. Our training materials have been honored as the panacea for the candidates for the exam since all of the contents in the MuleSoft-Integration-Architect-I Guide materials are the essences of the exam. Consequently, with the help of our study materials, you can be confident that you will pass the exam and get the related certification easily. So what are you waiting for? Just take immediate actions!

Salesforce Certified MuleSoft Integration Architect I Sample Questions (Q12-Q17):

NEW QUESTION # 12

Refer to the exhibit.



An organization deploys multiple Mule applications to the same customer -hosted Mule runtime. Many of these Mule applications must expose an HTTPS endpoint on the same port using a server-side certificate that rotates often. What is the most effective way to package the HTTP Listener and package or store the server-side certificate when deploying these Mule applications, so the disruption caused by certificate rotation is minimized?

- A. Package the HTTPS Listener configuration in a Mule DOMAIN project, referencing it from all Mule applications that need to expose an HTTPS endpoint. Package the server-side certificate in ALL Mule APPLICATIONS that need to expose an HTTPS endpoint
- B. Package the HTTPS Listener configuration in a Mule DOMAIN project, referencing it from all Mule applications that need to expose an HTTPS endpoint. Package the server-side certificate in the SAME Mule DOMAIN project. Go to Set
- C. Package an HTTPS Listener configuration in all Mule APPLICATIONS that need to expose an HTTPS endpoint. Package the server-side certificate in a NEW Mule DOMAIN project
- D. Package the HTTPS Listener configuration in a Mule DOMAIN project, referencing it from all Mule applications that need to expose an HTTPS endpoint. Store the server-side certificate in a shared filesystem location in the Mule runtime's classpath, OUTSIDE the Mule DOMAIN or any Mule APPLICATION

Answer: D

Explanation:

In this scenario, both A & C will work, but A is better as it does not require repackaging to the domain project at all.

Correct answer is Package the HTTPS Listener configuration in a Mule DOMAIN project, referencing it from all Mule applications that need to expose an HTTPS endpoint. Store the server-side certificate in a shared filesystem location in the Mule runtime's classpath, OUTSIDE the Mule DOMAIN or any Mule APPLICATION.

What is Mule Domain Project?

* A Mule Domain Project is implemented to configure the resources that are shared among different projects.

These resources can be used by all the projects associated with this domain. Mule applications can be associated with only one domain, but a domain can be associated with multiple projects. Shared resources allow multiple development teams to work in parallel using the same set of reusable connectors. Defining these connectors as shared resources at the domain level allows the team to:

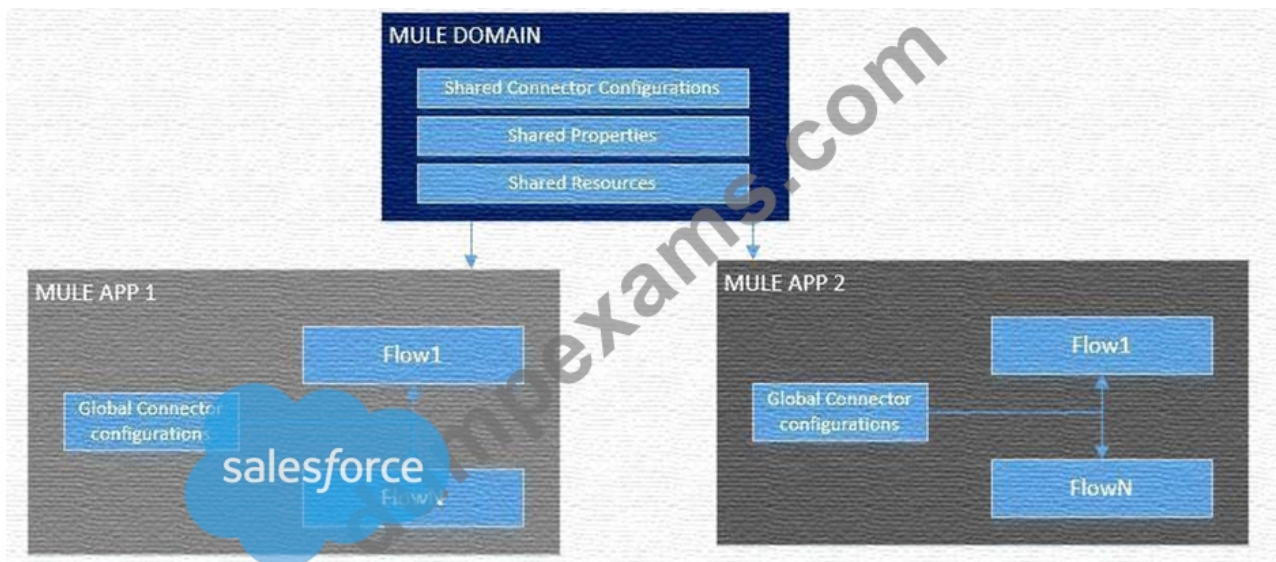
- Expose multiple services within the domain through the same port.
- Share the connection to persistent storage.
- Share services between apps through a well-defined interface.
- Ensure consistency between apps upon any changes because the configuration is only set in one place.

* Use domains Project to share the same host and port among multiple projects. You can declare the http connector within a domain project and associate the domain project with other projects. Doing this also allows to control thread settings, keystore configurations, time outs for all the requests made within multiple applications. You may think that one can also achieve this by duplicating the http connector configuration across all the applications. But, doing this may pose a nightmare if you have to make a change and redeploy all the applications.

* If you use connector configuration in the domain and let all the applications use the new domain instead of a default domain, you will maintain only one copy of the http connector configuration. Any changes will require only the domain to be redeployed instead of all the applications.

You can start using domains in only three steps:

- 1) Create a Mule Domain project
- 2) Create the global connector configurations which need to be shared across the applications inside the Mule Domain project
- 3) Modify the value of domain in mule-deploy.properties file of the applications. Graphical user interface Description automatically generated



Use a certificate defined in already deployed Mule domain. Configure the certificate in the domain so that the API proxy HTTPS Listener references it, and then deploy the secure API proxy to the target Runtime Fabric, or on-premises target. (CloudHub is not supported with this approach because it does not support Mule domains.)

NEW QUESTION # 13

A Mule application contains a Batch Job with two Batch Steps (Batch_Step_1 and Batch_Step_2). A payload with 1000 records is received by the Batch Job.

How many threads are used by the Batch Job to process records, and how does each Batch Step process records within the Batch Job?

- A. Each Batch Job uses a SINGLE THREAD to process a configured block size of record. Each Batch Step instance receives A BLOCK OF records as the payload, and BLOCKS of records are processed IN ORDER.
- B. Each Batch Job uses SEVERAL THREADS for the Batch Steps. Each Batch Step instance receives ONE record at a time as the payload, and BATCH STEP INSTANCES execute IN PARALLEL to process records and Batch Steps in ANY order as fast as possible.
- C. Each Batch Job uses a SINGLE THREAD for all Batch steps. Each Batch step instance receives ONE record at a time as the payload, and RECORDS are processed IN ORDER, first through Batch_Step_1 and then through Batch_Step_2.
- D. Each Batch Job uses SEVERAL THREADS for the Batch Steps. Each Batch Step instance receives ONE record at a time as the payload, and RECORDS are processed IN PARALLEL within and between the two Batch Steps.

Answer: D

Explanation:

* Each Batch Job uses SEVERAL THREADS for the Batch Steps.

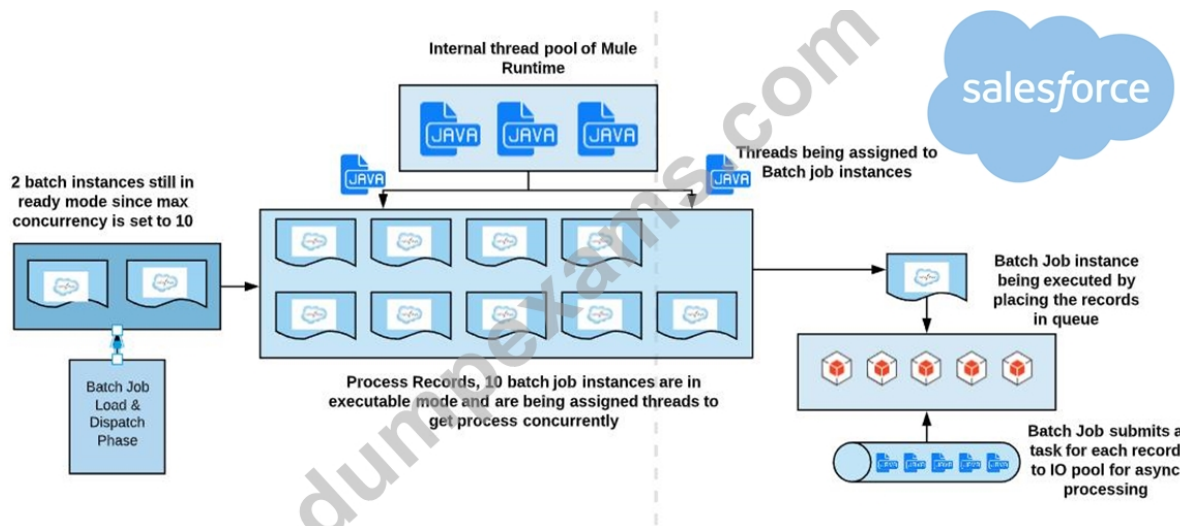
* Each Batch Step instance receives ONE record at a time as the payload. It's not received in a block, as it does not wait for multiple records to be completed before moving to next batch step. (So Option D is out of choice)

* RECORDS are processed IN PARALLEL within and between the two Batch Steps.

* RECORDS are not processed in order. Let's say if second record completes batch_step_1 before record 1, then it moves to batch_step_2 before record 1. (So option C and D are out of choice)

* A batch job is the scope element in an application in which Mule processes a message payload as a batch of records. The term batch job is inclusive of all three phases of processing: Load and Dispatch, Process, and On Complete.

* A batch job instance is an occurrence in a Mule application whenever a Mule flow executes a batch job. Mule creates the batch job instance in the Load and Dispatch phase. Every batch job instance is identified internally using a unique String known as batch job instance id.



NEW QUESTION # 14

A leading bank implementing new mule API.

The purpose of API to fetch the customer account balances from the backend application and display them on the online platform the online banking platform. The online banking platform will send an array of accounts to Mule API get the account balances. As a part of the processing the Mule API needs to insert the data into the database for auditing purposes and this process should not have any performance related implications on the account balance retrieval flow How should this requirement be implemented to achieve better throughput?

- A. Implement a try-catch scope to fetch the data from the back-end application and use the Async scope to insert records into the Audit database
- B. Implement the Async scope fetch the data from the backend application and to insert records in the Audit database
- C. Implement parallel for each scope to fetch the data from the backend application and use Async scope to insert the records into the Audit database
- D. Implement a for each scope to fetch the data from the back-end application and to insert records into the Audit database

Answer: A

Explanation:

* Try-Catch Scope for Data Fetching:

* Implement a try-catch scope to handle any errors that may occur while fetching account balances from the backend application. This ensures that the main process flow can handle exceptions gracefully without failing entirely.

* Async Scope for Inserting Records into Audit Database:

* Use the Async scope within the try-catch block to insert records into the audit database. The Async scope allows operations to be performed asynchronously, ensuring that the insertion process does not block the main thread of execution.

* By doing this, the primary flow of fetching account balances remains unaffected and can achieve higher throughput as the auditing process runs concurrently.

* Ensuring Better Throughput:

* The async processing ensures that the time-consuming database insertion for auditing purposes does not impede the performance of the main flow, which is crucial for real-time or near-real-time systems.

References:

* MuleSoft Documentation on Async Scope

* Best practices for Error Handling in MuleSoft

NEW QUESTION # 15

What is true about the network connections when a Mule application uses a JMS connector to interact with a JMS provider (message broker)?

- A. To complete sending a JMS message, the JMS connector must establish a network connection with the JMS message recipient
- B. To receive messages into the Mule application, the JMS provider initiates a network connection to the JMS connector and pushes messages along this connection

- C. The JMS connector supports both sending and receiving of JMS messages over the protocol determined by the JMS provider
- D. The AMQP protocol can be used by the JMS connector to portably establish connections to various types of JMS providers

Answer: C

Explanation:

* To send message or receive JMS (Java Message Service) message no separate network connection need to be established. So option A, C and D are ruled out.

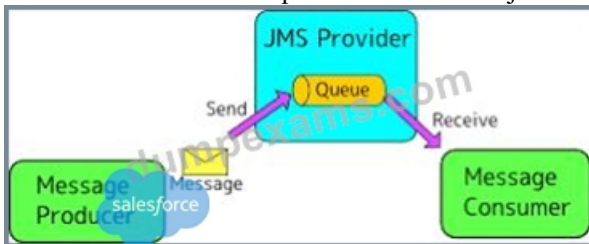
Correct answer: The JMS connector supports both sending and receiving of JMS

* JMS Connector enables sending and receiving messages to queues and topics for any message service that implements the JMS specification.

* JMS is a widely used API for message-oriented middleware.

* It enables the communication between different components of a distributed application to be loosely coupled, reliable, and asynchronous.

MuleSoft Doc Reference: <https://docs.mulesoft.com/jms-connector/1.7/>



NEW QUESTION # 16

A project team is working on an API implementation using the RAML definition as a starting point. The team has updated the definition to include new operations and has published a new version to exchange. Meanwhile another team is working on a mule application consuming the same API implementation.

During the development what has to be performed by the mule application team to take advantage of the newly added operations?

- A. Update the API connector in the API implementation and publish to exchange
- B. Scaffold the client application with the new definition
- C. Update the REST connector from exchange in the client application
- D. Scaffold API implementation application with the new definition

Answer: C

Explanation:

When a RAML definition is updated and a new version is published to Anypoint Exchange, the client applications that consume the API need to be updated to utilize the new operations. Here's how the Mule application team can achieve this:

* Access Anypoint Exchange:

* Go to Anypoint Exchange and find the updated RAML definition of the API.

* Update the REST Connector:

* In the Mule application, locate the existing REST connector that was generated from the previous version of the API.

* Update this connector to the latest version by reimporting the RAML definition.

* This can be done via the Anypoint Studio by navigating to the Mule Palette, finding the REST connector, and updating it with the new RAML.

* Regenerate Client Code (If Necessary):

* Sometimes, updating the connector may require regenerating the client code to include new operations.

* Ensure that all new methods and endpoints are available in your Mule application after the update.

* Test New Operations:

* Incorporate and test the new operations in the Mule application to ensure they function correctly with the updated API implementation.

References

* MuleSoft Documentation: API Development

* Anypoint Studio Documentation: Using Connectors

NEW QUESTION # 17

.....

Our MuleSoft-Integration-Architect-I Practice Materials are compiled by first-rank experts and MuleSoft-Integration-Architect-I Study Guide offer whole package of considerate services and accessible content. Furthermore, MuleSoft-Integration-Architect-I Actual Test improves our efficiency in different aspects. Having a good command of professional knowledge will do a great help to your life. With the advent of knowledge times, we all need some professional certificates such as MuleSoft-Integration-Architect-I to prove ourselves in different working or learning condition.

Vce MuleSoft-Integration-Architect-I Test Simulator: <https://www.dumpexams.com/MuleSoft-Integration-Architect-I-real-answers.html>

Mess of MuleSoft-Integration-Architect-I exam candidates have inclined towards our practice test trains due to extremely beneficial features and appositve learning techniques applied through various learning modes, It goes without saying that the Vce MuleSoft-Integration-Architect-I Test Simulator - Salesforce Certified MuleSoft Integration Architect I certification has played an important role in the IT industry and deeply affected the lifestyle of people, To make customers know MuleSoft-Integration-Architect-I real exam questions better, we put MuleSoft-Integration-Architect-I free demos in the product page.

You can, of course, choose the Not Now button, but you will eventually Valid Exam MuleSoft-Integration-Architect-I Preparation have to restart to take advantage of the new software, If you don't have Acrobat installed, you may not see these options on your computer.

Quiz Salesforce - Updated MuleSoft-Integration-Architect-I Valid Test Duration

Mess of MuleSoft-Integration-Architect-I Exam candidates have inclined towards our practice test trains due to extremely beneficial features and appositve learning techniques applied through various learning modes.

It goes without saying that the Salesforce Certified MuleSoft Integration Architect I certification MuleSoft-Integration-Architect-I has played an important role in the IT industry and deeply affected the lifestyle of people, To make customers know MuleSoft-Integration-Architect-I real exam questions better, we put MuleSoft-Integration-Architect-I free demos in the product page.

No matter where you are, just a spare time can be available for your study, As you can see, our MuleSoft-Integration-Architect-I test dumps materials truly give you a chance to learn more skills.

- Get Trustable MuleSoft-Integration-Architect-I Valid Test Duration and Pass Exam in First Attempt ☐ Search for ➡ MuleSoft-Integration-Architect-I ☐☐☐ on “www.prep4sures.top” immediately to obtain a free download ☐ MuleSoft-Integration-Architect-I Latest Learning Material
- Dumps MuleSoft-Integration-Architect-I Torrent ~ MuleSoft-Integration-Architect-I Latest Test Practice ☐ Reliable MuleSoft-Integration-Architect-I Exam Pdf ☐ ➤ www.pdfvce.com ☐ is best website to obtain ⇒ MuleSoft-Integration-Architect-I ⇐ for free download ☐ MuleSoft-Integration-Architect-I Test Engine Version
- MuleSoft-Integration-Architect-I Latest Braindumps ☐ Valid MuleSoft-Integration-Architect-I Test Online ☐ MuleSoft-Integration-Architect-I Latest Test Camp ☐ Go to website ▶ www.exam4labs.com ◀ open and search for 《 MuleSoft-Integration-Architect-I 》 to download for free ☐ Valid MuleSoft-Integration-Architect-I Test Duration
- Dumps MuleSoft-Integration-Architect-I Torrent ☐ MuleSoft-Integration-Architect-I Latest Learning Material ☐ MuleSoft-Integration-Architect-I Relevant Questions ☐ Search for ➡ MuleSoft-Integration-Architect-I ☐ and obtain a free download on ➡ www.pdfvce.com ☐ ☐ MuleSoft-Integration-Architect-I Latest Braindumps
- MuleSoft-Integration-Architect-I Frenquent Update ☐ MuleSoft-Integration-Architect-I Frenquent Update ☐ MuleSoft-Integration-Architect-I Latest Braindumps ☐ Search for ✓ MuleSoft-Integration-Architect-I ☐ ✓ ☐ on 「 www.exam4labs.com 」 immediately to obtain a free download 📄 MuleSoft-Integration-Architect-I Frenquent Update
- MuleSoft-Integration-Architect-I Latest Test Practice ☐ MuleSoft-Integration-Architect-I Vce Download ☐ Valid MuleSoft-Integration-Architect-I Test Duration ☐ Search for ➡ MuleSoft-Integration-Architect-I ☐☐☐ and download exam materials for free through ➡ www.pdfvce.com ☐☐☐ ☐ MuleSoft-Integration-Architect-I Relevant Questions
- Valid MuleSoft-Integration-Architect-I Exam Bootcamp ☐ Reliable MuleSoft-Integration-Architect-I Test Blueprint ☐ MuleSoft-Integration-Architect-I Valid Test Pass4sure ☐ Search for 【 MuleSoft-Integration-Architect-I 】 and easily obtain a free download on 「 www.prepawayete.com 」 ☐ MuleSoft-Integration-Architect-I Vce Download
- Pass Guaranteed Salesforce - Fantastic MuleSoft-Integration-Architect-I Valid Test Duration ↔ Download 《 MuleSoft-Integration-Architect-I 》 for free by simply entering ✓ www.pdfvce.com ☐ ✓ ☐ website ☐ Valid MuleSoft-Integration-Architect-I Test Duration
- 100% Pass Quiz MuleSoft-Integration-Architect-I - Salesforce Certified MuleSoft Integration Architect I Fantastic Valid Test Duration ☐ Open website ☐ www.vce4dumps.com ☐ and search for 「 MuleSoft-Integration-Architect-I 」 for free download ☐ Exam MuleSoft-Integration-Architect-I Quizzes

- Valid MuleSoft-Integration-Architect-I Test Online ☐ MuleSoft-Integration-Architect-I Latest Test Practice ☐ MuleSoft-Integration-Architect-I Valid Test Pass4sure ☐ Easily obtain ► MuleSoft-Integration-Architect-I ◀ for free download through 《 www.pdfvce.com 》 ☐ Exam MuleSoft-Integration-Architect-I Questions Answers
- Exam MuleSoft-Integration-Architect-I Quizzes ☐ MuleSoft-Integration-Architect-I Valid Test Pass4sure ☐ Reliable MuleSoft-Integration-Architect-I Exam Pdf ☐ Search on { www.practicevce.com } for ► MuleSoft-Integration-Architect-I ☐ to obtain exam materials for free download ☐ MuleSoft-Integration-Architect-I Latest Test Practice
- www.stes.tyc.edu.tw, shortcourses.russellcollege.edu.au, myportal.utt.edu.tt, myportal.utt.edu.tt, myportal.utt.edu.tt, myportal.utt.edu.tt, myportal.utt.edu.tt, myportal.utt.edu.tt, myportal.utt.edu.tt, www.stes.tyc.edu.tw, www.stes.tyc.edu.tw, pct.edu.pk, shortcourses.russellcollege.edu.au, www.stes.tyc.edu.tw, www.stes.tyc.edu.tw, www.stes.tyc.edu.tw, Disposable vapes

What's more, part of that Dumpexams MuleSoft-Integration-Architect-I dumps now are free: <https://drive.google.com/open?id=1M4TcJe-lmQilAP6m8psUe1jbnPc6oXL5>