

RVT_ELEC_01101 Latest Dumps & RVT_ELEC_01101 Valid Practice Materials



One of the best ways to prepare for the Autodesk RVT_ELEC_01101 exam is to study the Autodesk Certified Professional in Revit for Electrical Design (RVT_ELEC_01101) exam questions. Familiarizing yourself with the RVT_ELEC_01101 certification using practice test on real-world data sets can help you build your confidence and prepare you for the exam. Additionally, taking RVT_ELEC_01101 Exam Questions and quizzes can help you identify areas where you need to improve and gauge your understanding of the material.

Autodesk RVT_ELEC_01101 Exam Syllabus Topics:

Topic	Details
Topic 1	<ul style="list-style-type: none">• Families: This section of the exam measures the skills of BIM Modelers and focuses on creating and editing Revit families. It includes defining MEP connectors, understanding system and component family types, configuring family categories, and setting up light sources. The section also assesses parameter creation, annotation family setup, and controlling element visibility to ensure effective customization and reuse across electrical projects.
Topic 2	<ul style="list-style-type: none">• Documentation: This section of the exam measures the skills of Revit Technicians and covers manipulating views, templates, and schedules to produce accurate documentation. It includes managing panel schedules, creating various view types such as legends, callouts, and 3D views, and applying phasing and revision management. Candidates are also tested on annotation tools, including tags, keynotes, and note blocks, to ensure clarity and consistency in project documentation.
Topic 3	<ul style="list-style-type: none">• Analysis: This section of the exam measures the skills of Electrical Engineers and focuses on performing analytical tasks in Revit. It includes conducting load calculations, conceptual lighting analysis, and configuring electrical settings for load classifications and demand factors. Candidates must show the ability to use Revit's analysis tools to ensure proper electrical design performance and energy efficiency.

Topic 4	<ul style="list-style-type: none"> Modeling: This section of the exam measures the skills of Electrical Designers and covers creating and managing electrical elements within Revit. It includes adding electrical equipment such as panelboards and transformers, configuring circuits and low-voltage systems, and using the System Browser for navigation. Candidates must also demonstrate the ability to model connecting geometry, including conduits, cable trays, and wiring, with appropriate settings and fittings.
Topic 5	<ul style="list-style-type: none"> Collaboration: This section of the exam measures the skills of Project Coordinators and covers collaboration workflows in Revit. It includes working with imported and linked files, managing worksharing concepts, and using interference checks. Candidates are also evaluated on data coordination through copy monitor tools, exporting to different formats, managing design options, and transferring project standards to ensure effective teamwork in shared environments.

>> RVT_ELEC_01101 Latest Dumps <<

Pass Guaranteed 2026 Autodesk RVT_ELEC_01101 High Hit-Rate Latest Dumps

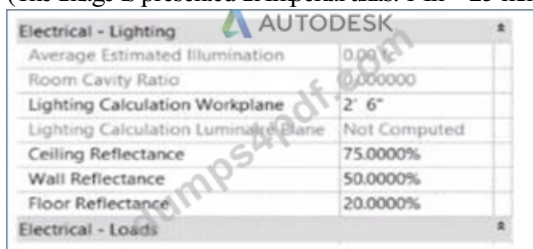
With our Autodesk RVT_ELEC_01101 study material, you'll be able to make the most of your time to ace the test. Despite what other courses might tell you, let us prove that studying with us is the best choice for passing your Autodesk RVT_ELEC_01101 Certification Exam! If you want to increase your chances of success and pass your RVT_ELEC_01101 exam, start learning with us right away!

Autodesk Certified Professional in Revit for Electrical Design Sample Questions (Q13-Q18):

NEW QUESTION # 13

Refer to exhibit.

(The image is presented in Imperial units: 1 In = 25 mm (Metric units rounded).)



In the space properties for the space, the Lighting Calculation Luminaire Plane is Not Computed. What is causing this issue?

- A. The lighting fixtures are missing an IES file.
- B. No lights are placed in the space.**
- C. The lights in this space are not circuited.
- D. Lights are at different elevations in the same space.

Answer: B

Explanation:

The parameter "Lighting Calculation Luminaire Plane: Not Computed" in the Space Properties dialog appears when Revit cannot perform a lighting calculation because no valid lighting fixtures are present within that defined space.

According to the Autodesk Revit MEP User's Guide (Chapter: Spaces and Lighting Analysis):

"Lighting calculations are performed based on the luminaire data available in the space. If no light fixtures are present, the parameter 'Lighting Calculation Luminaire Plane' displays as 'Not Computed'. Revit requires at least one hosted or ceiling-mounted lighting fixture with a valid light source to calculate illumination." In this case, although the space has defined reflectance values (ceiling, wall, and floor) and a lighting calculation workplane height (2'-6"), Revit cannot compute the Luminaire Plane because the software has no lighting geometry to reference for the photometric analysis.

Explanation of incorrect options:

A . Missing IES file: This would cause inaccurate photometric output, but not "Not Computed." C . Lights not circuited: Circuiting affects load summaries, not lighting calculations.

D. Lights at different elevations: Revit still computes the average luminaire plane even with varied fixture heights. Thus, the lighting calculation is not computed simply because no lighting fixtures are placed in the space.

References:

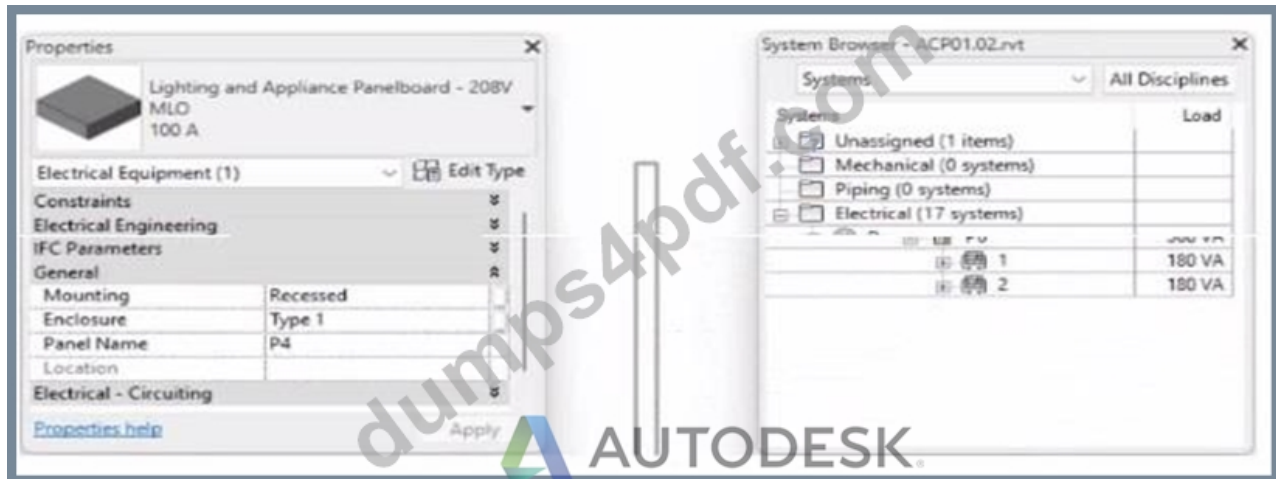
Autodesk Revit MEP 2011 User's Guide, Chapter 46: Spaces and Lighting Analysis, pp. 1064-1068.

Autodesk Revit 2021 Electrical Design Guide, Lighting Analysis Parameters.

Smithsonian Facilities Revit Template User's Guide (2021), Section 8.7 - Lighting Performance Parameters in Spaces.

NEW QUESTION # 14

Refer to exhibit.



To which panel is Panel P4 circuited?

- A. Panel P 5
- B. Panel P 3
- C. Panel P 1
- **D. Panel P 2**

Answer: D

Explanation:

In Autodesk Revit MEP Electrical Design, the System Browser is used to analyze and verify electrical systems, including panelboard connections, circuit hierarchies, and connected loads.

From the exhibit, the Properties palette shows that the selected equipment is a Lighting and Appliance Panelboard (208V MLO, 100A), named P4. To determine the parent panel that feeds Panel P4, we refer to the System Browser, which organizes the entire electrical distribution network hierarchically under the Electrical discipline.

In the System Browser on the right, under the Electrical category, we can observe that Panel P4 is nested directly under Panel P2. This organization indicates that P4 is circuited to (or fed from) Panel P2.

According to the Revit MEP 2011 User's Guide, Chapter 4, "Electrical Systems-Using the System Browser," it states:

"The System Browser displays electrical systems in a tree structure. Each subpanel or device listed beneath a main panel is connected to that panel through an electrical circuit. When a panelboard appears under another, it indicates the subpanel is fed from that parent panel." This is further reinforced in Smithsonian Facilities Revit Electrical Template Documentation (April 2021), Section 8.3 "Documentation Views," which describes:

"Panel schedules and browser hierarchies show the distribution sequence. Subpanels appear indented beneath their source panel, indicating electrical dependency and circuit assignment." Therefore, by interpreting both the Revit interface and Autodesk's documentation, Panel P4 is a subpanel connected to Panel P2, confirming that its electrical feed is assigned from Panel P2.

Final Verified answer: B. Panel P2

Reference Sources:

Autodesk Revit MEP 2011 User's Guide, Chapter 4 - Electrical Systems and the System Browser Smithsonian Facilities Revit Template User's Guide, Section 8.3 - Electrical and Fire Alarm Templates: Documentation Views

NEW QUESTION # 15

An electrical designer is routing conduit through a building model to coordinate with other disciplines, the electrical designer wants to view selected components in a cropped 3D view.

With the conduit components selected, which tool should the designer use?

- A. Default 3D View
- **B. Selection Box**
- C. Section Box
- D. Scope Box

Answer: B

Explanation:

In Revit Electrical Design, the Selection Box tool is used to quickly isolate and display selected components in a cropped 3D view. When an electrical designer selects conduits or devices in a model and chooses Selection Box from the Modify tab, Revit automatically generates a 3D view bounded tightly around the selected elements, helping coordinate routing in confined or congested spaces.

According to the Revit MEP User's Guide under "Creating 3D Views":

"Use the Selection Box tool to create a 3D view that isolates selected elements. Revit automatically crops the view extents to the selected geometry." This feature is critical in multidisciplinary coordination because it allows the electrical designer to review specific conduits, cable trays, or lighting paths in context without manually adjusting view boundaries.

In contrast:

Default 3D View (Option B) shows the entire model.

Scope Box (Option C) controls view extents in 2D views or view templates, not instant isolation.

Section Box (Option D) is manually adjusted within an existing 3D view but does not automatically generate a cropped view around selected elements.

Therefore, the Selection Box is the correct and most efficient tool for this task.

References:

Autodesk Revit MEP User's Guide - Chapter 47 "Creating and Managing 3D Views," pp. 1108-1111 Smithsonian Facilities Revit Template User's Guide - Section 3.6 "Egress Routes and Coordination Views," p. 40 Autodesk Revit Electrical Design Essentials - 3D Visualization and Coordination Techniques

NEW QUESTION # 16

An electrical designer is working on a project with multiple buildings. The designer wants to organize the Project Browser by building. For example, all views related to Building A will be sorted under Building A, and all views related to Building B will be sorted under Building B.

The designer decides to create a new parameter, assign it to views, and then sort the Project Browser according to the new parameter.

Which parameter should the designer use?

- **A. A project parameter**
- B. A global parameter
- C. A family parameter
- D. A reporting parameter

Answer: A

Explanation:

In Autodesk Revit, Project Parameters are used to add custom fields that apply to multiple elements within a specific project file - such as views, sheets, or schedules. These parameters allow project teams to categorize, group, and sort information within the Project Browser or within schedules without editing families or external files.

As defined in the Revit MEP User's Guide and Revit Structure Parameters Chapter:

"Project parameters are specific to a single project file. Information stored in project parameters cannot be shared with other projects. A project parameter can be used, for example, to categorize views within a project." This statement directly confirms that project parameters are the correct tool for sorting or grouping views in the Project Browser.

To organize elements (like views or sheets) by building, the designer can create a custom project parameter named "Building" and assign it to the View category. Once assigned, the parameter values (e.g., "Building A" or "Building B") can be filled in for each view. The Smithsonian Facilities Revit Template Guide further supports this:

"View purpose is a Revit project parameter, providing a means for users to organize the many views that may exist in a BIM." Thus, using a project parameter allows users to add a "Building" field to each view, enabling customized browser organization (e.g., group views by Building A, Building B, etc.) without requiring shared parameters or family editing.

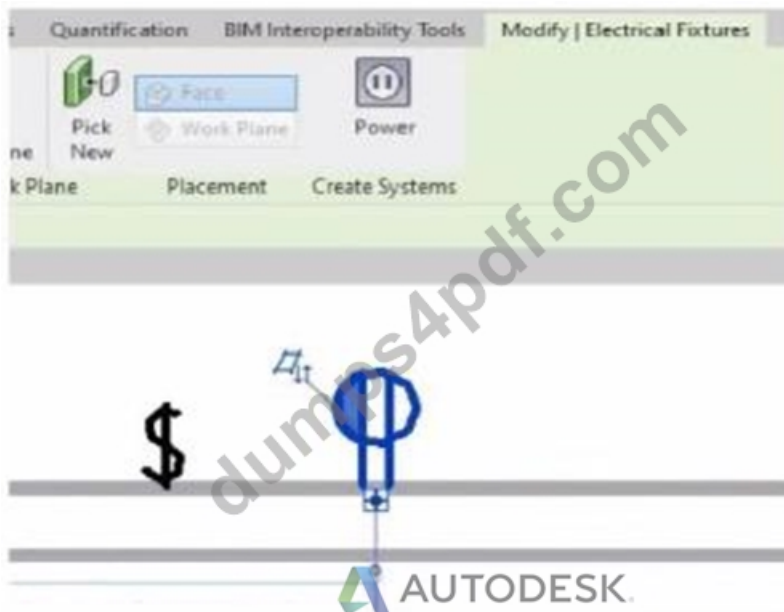
References:

Revit MEP User's Guide - Chapter "Parameters" p. 1541-1543

Smithsonian Facilities Revit Template User's Guide - Section 2.8.1 "View Types and View Templates," p. 29 Autodesk Revit Electrical Design Essentials - Parameter Management Section

NEW QUESTION # 17

Refer to exhibit.



An electrical designer is circuiting a dwelling unit. The receptacle (electrical fixture) shown must be controlled by the switch (lighting device) shown to switch a plug-in lamp. When the receptacle is selected, Revit does not provide an option to add the receptacle to a switch system.

What is causing this issue?

- A. The receptacle's "Switchable" option is not selected within the family editor.
- B. Only lighting fixtures can be added to switch systems.
- C. The switch and the receptacle are not on the same circuit.
- D. A switch system has not yet been created.

Answer: A

Explanation:

In Autodesk Revit Electrical Design, when an electrical designer attempts to control a receptacle (an Electrical Fixture family) with a switch (a Lighting Device family) as part of a switch system, Revit will only allow this connection if the receptacle's family has been configured as Switchable within the Family Editor.

According to the Autodesk Revit MEP User's Guide (Chapter 17 - "Electrical Systems"):

"Revit allows you to add elements such as lighting fixtures or receptacles to a switch system only if the family includes a switchable connector. The 'Switchable' parameter must be enabled in the Family Editor to allow this connection." This means that for the receptacle shown in the exhibit to appear as an available component for switching, the Electrical Connector within its family must have the Switchable property checked. This parameter is found under:

Family Editor → Select Connector → Properties Palette → Electrical - Data → Switchable.

If this option is not enabled, Revit treats the receptacle as a standard unswitched outlet and will not display it in the switch system creation dialog. Once the option is checked, the designer can reload the family into the project and associate it with a switch system normally.

Additionally, the Smithsonian Facilities Revit Template User's Guide explains this concept as follows:

"To associate receptacles with lighting switches, ensure that the receptacle family has a switchable connector. Without this setting, the device will not appear as an assignable component to a switch system." This distinction is important in residential electrical modeling, where switched receptacles are common for plug-in lamps. Lighting circuits can include both Lighting Fixtures and Switchable Receptacles when the family configuration supports it.

Incorrect Options Explanation:

A. A switch system not being created is irrelevant - the issue occurs before system creation.

C. Being on the same circuit doesn't affect switchability; it affects electrical load connection.

D. Incorrect - Revit supports switchable receptacles if properly configured.

Therefore, the correct answer is B. The receptacle's "Switchable" option is not selected within the family editor.

References:

Autodesk Revit MEP User's Guide - Chapter 17 "Electrical Systems," pp. 417-421 Autodesk Revit Electrical Design Essentials - Section "Creating and Editing Electrical Fixtures and Switch Systems" Smithsonian Facilities Revit Template User's Guide - Section

NEW QUESTION # 18

.....

In order to make all customers feel comfortable, our company will promise that we will offer the perfect and considerate service for all customers. If you buy the RVT_ELEC_01101 training files from our company, you will have the right to enjoy the perfect service. We have employed a lot of online workers to help all customers solve their problem. If you have any questions about the RVT_ELEC_01101 learning dumps, do not hesitate and ask us in your anytime, we are glad to answer your questions and help you use our RVT_ELEC_01101 study questions well. We believe our perfect service will make you feel comfortable when you are preparing for your exam.

RVT_ELEC_01101 Valid Practice Materials: https://www.dumps4pdf.com/RVT_ELEC_01101-valid-braindumps.html

- RVT_ELEC_01101 Test Pdf □ RVT_ELEC_01101 Test Papers □ Valid Braindumps RVT_ELEC_01101 Ebook □ ☀ www.testkingpass.com □ ☀ □ is best website to obtain ☀ RVT_ELEC_01101 □ ☀ □ for free download □ □ RVT_ELEC_01101 Test Papers
- 2026 RVT_ELEC_01101 Latest Dumps 100% Pass | Trustable Autodesk Autodesk Certified Professional in Revit for Electrical Design Valid Practice Materials Pass for sure □ Download □ RVT_ELEC_01101 □ for free by simply searching on ✓ www.pdfvce.com □ ✓ □ □ Valid Braindumps RVT_ELEC_01101 Ebook
- 100% Pass Quiz 2026 RVT_ELEC_01101: Autodesk Certified Professional in Revit for Electrical Design – The Best Latest Dumps □ Search for ☀ RVT_ELEC_01101 □ ☀ □ and download it for free immediately on □ www.exam4labs.com □ □ Exam RVT_ELEC_01101 Simulations
- 2026 RVT_ELEC_01101 Latest Dumps 100% Pass | Trustable Autodesk Autodesk Certified Professional in Revit for Electrical Design Valid Practice Materials Pass for sure □ Search for ➡ RVT_ELEC_01101 □ □ □ and download it for free immediately on ➡ www.pdfvce.com □ □ RVT_ELEC_01101 Exam Dumps Provider
- RVT_ELEC_01101 Latest Demo □ Valid Study RVT_ELEC_01101 Questions 📖 RVT_ELEC_01101 Valid Exam Pattern □ Search on ➡ www.dumpsquestion.com □ for ▶ RVT_ELEC_01101 ◀ to obtain exam materials for free download □ 100% RVT_ELEC_01101 Exam Coverage
- RVT_ELEC_01101 Latest Dumps | Autodesk RVT_ELEC_01101 Valid Practice Materials: Autodesk Certified Professional in Revit for Electrical Design Exam Pass Once Try □ Go to website [www.pdfvce.com] open and search for ☀ RVT_ELEC_01101 □ ☀ □ to download for free □ Exam RVT_ELEC_01101 Simulations
- New RVT_ELEC_01101 Dumps Free ↘ Exam RVT_ELEC_01101 Braindumps □ RVT_ELEC_01101 Exam Dumps Provider □ Enter ➡ www.practicevce.com □ and search for ➡ RVT_ELEC_01101 □ to download for free □ Exam RVT_ELEC_01101 Braindumps
- 100% RVT_ELEC_01101 Exam Coverage □ Exam RVT_ELEC_01101 Simulations □ New RVT_ELEC_01101 Dumps Free □ Search for 【 RVT_ELEC_01101 】 and download exam materials for free through “ www.pdfvce.com ” □ 100% RVT_ELEC_01101 Exam Coverage
- RVT_ELEC_01101 Test Papers □ Exam RVT_ELEC_01101 Simulations □ RVT_ELEC_01101 Test Collection Pdf □ Download 【 RVT_ELEC_01101 】 for free by simply entering 「 www.verifiedumps.com 」 website □ □ RVT_ELEC_01101 Passing Score Feedback
- Here's the Easiest and Quick Way to Pass Autodesk RVT_ELEC_01101 Exam □ Go to website “ www.pdfvce.com ” open and search for □ RVT_ELEC_01101 □ to download for free □ RVT_ELEC_01101 Passing Score Feedback
- Testing RVT_ELEC_01101 Center □ Testing RVT_ELEC_01101 Center □ Valid Braindumps RVT_ELEC_01101 Ebook □ Search on ➡ www.practicevce.com □ for ➡ RVT_ELEC_01101 □ □ □ to obtain exam materials for free download □ RVT_ELEC_01101 Exam Dumps Provider
- lms.sitekit.id, www.stes.tyc.edu.tw, www.stes.tyc.edu.tw, www.stes.tyc.edu.tw, www.stes.tyc.edu.tw, backlogd.com, Disqus.com, myportal.utt.edu.tt, myportal.utt.edu.tt, myportal.utt.edu.tt, myportal.utt.edu.tt, myportal.utt.edu.tt, edutech-masters.com, kumu.io, Disposable vapes